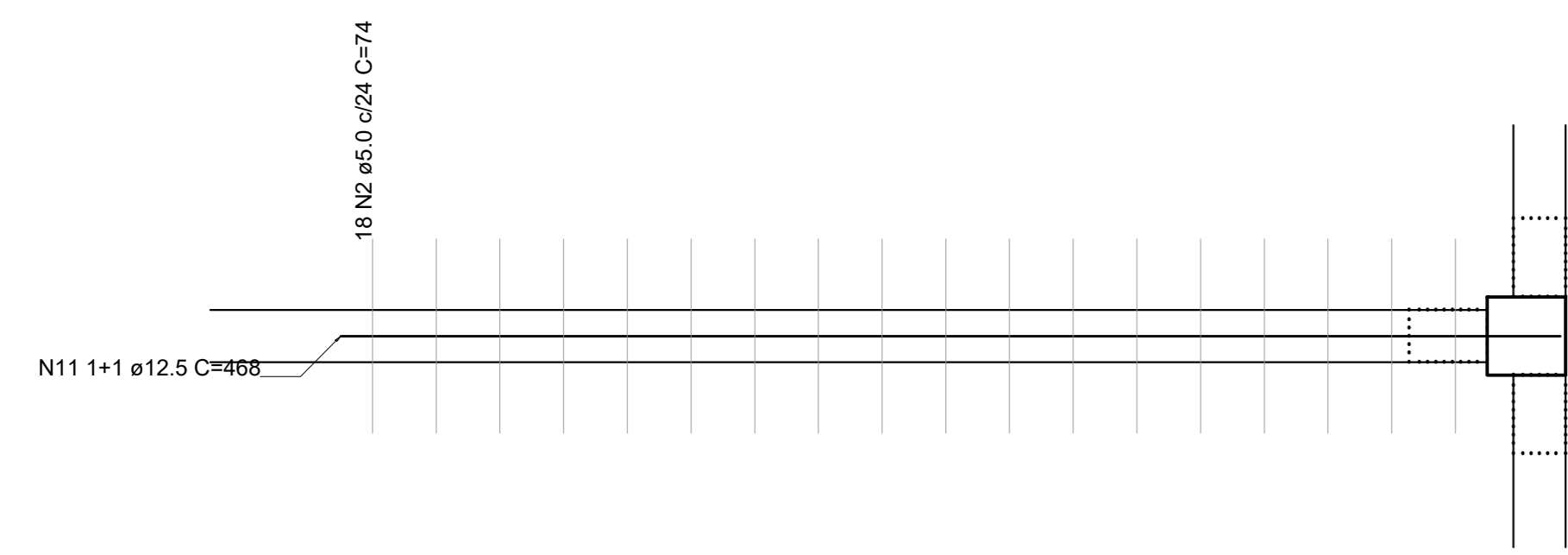
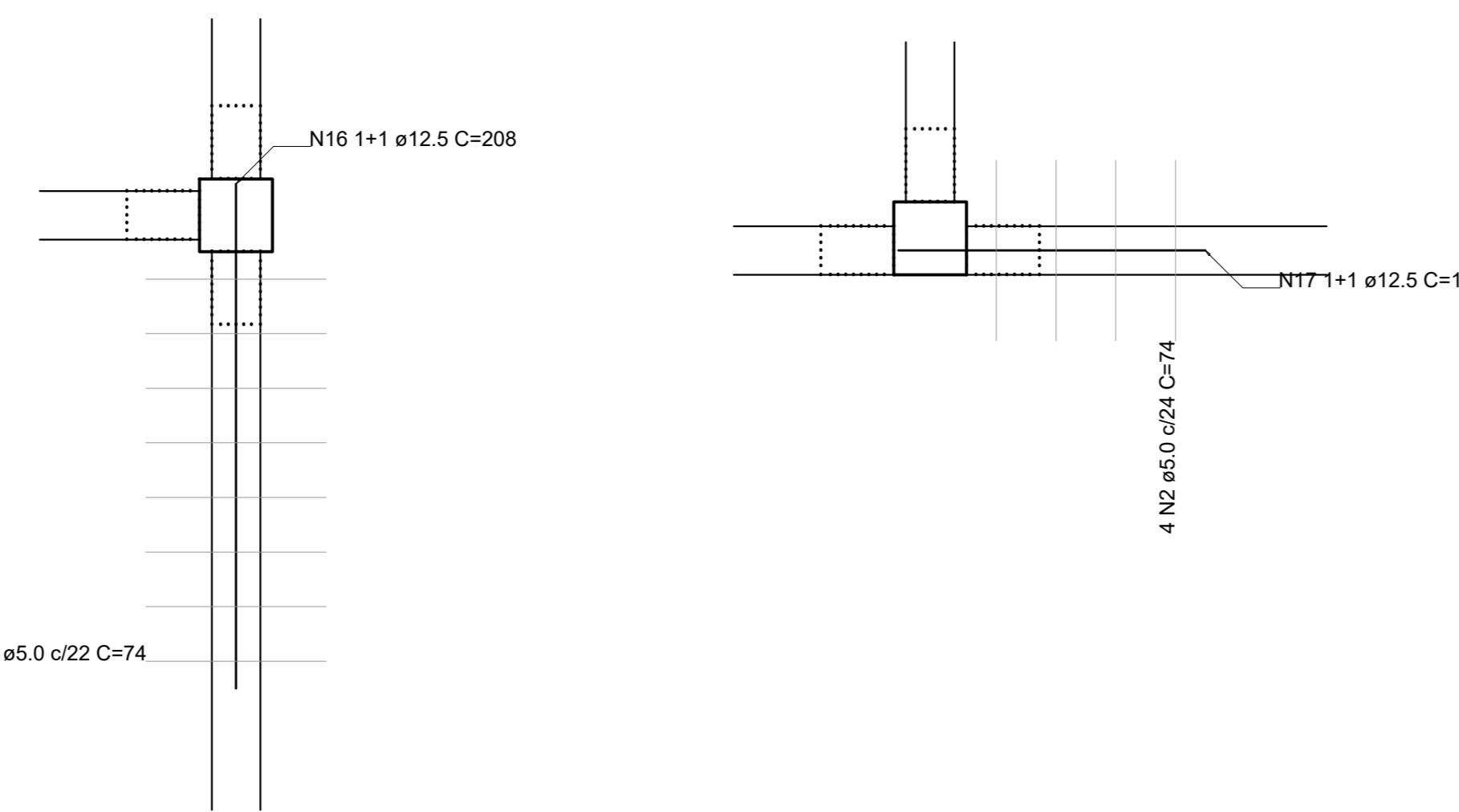


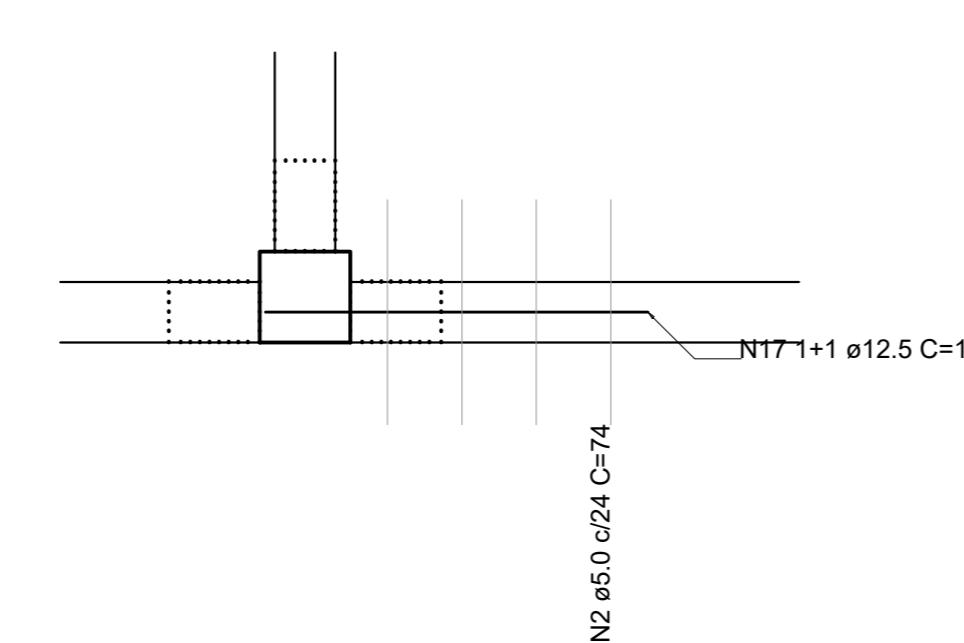
Continuidade P24  
esc. 1:25



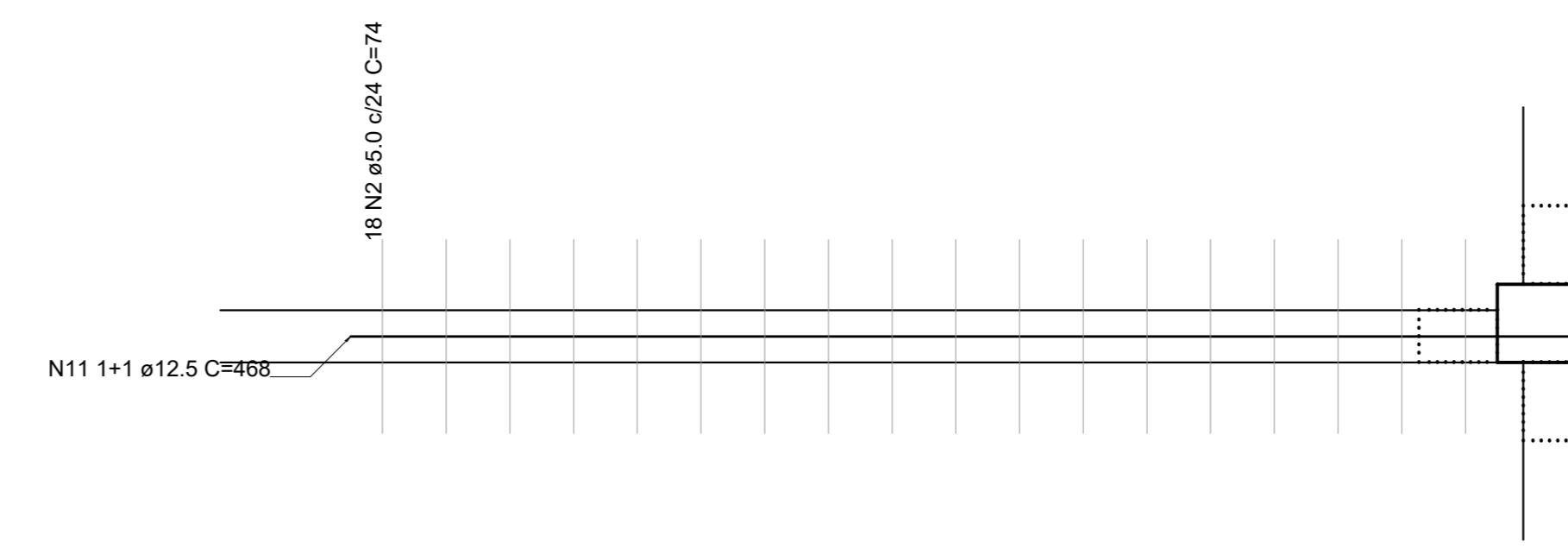
Continuidade P26  
esc. 1:25



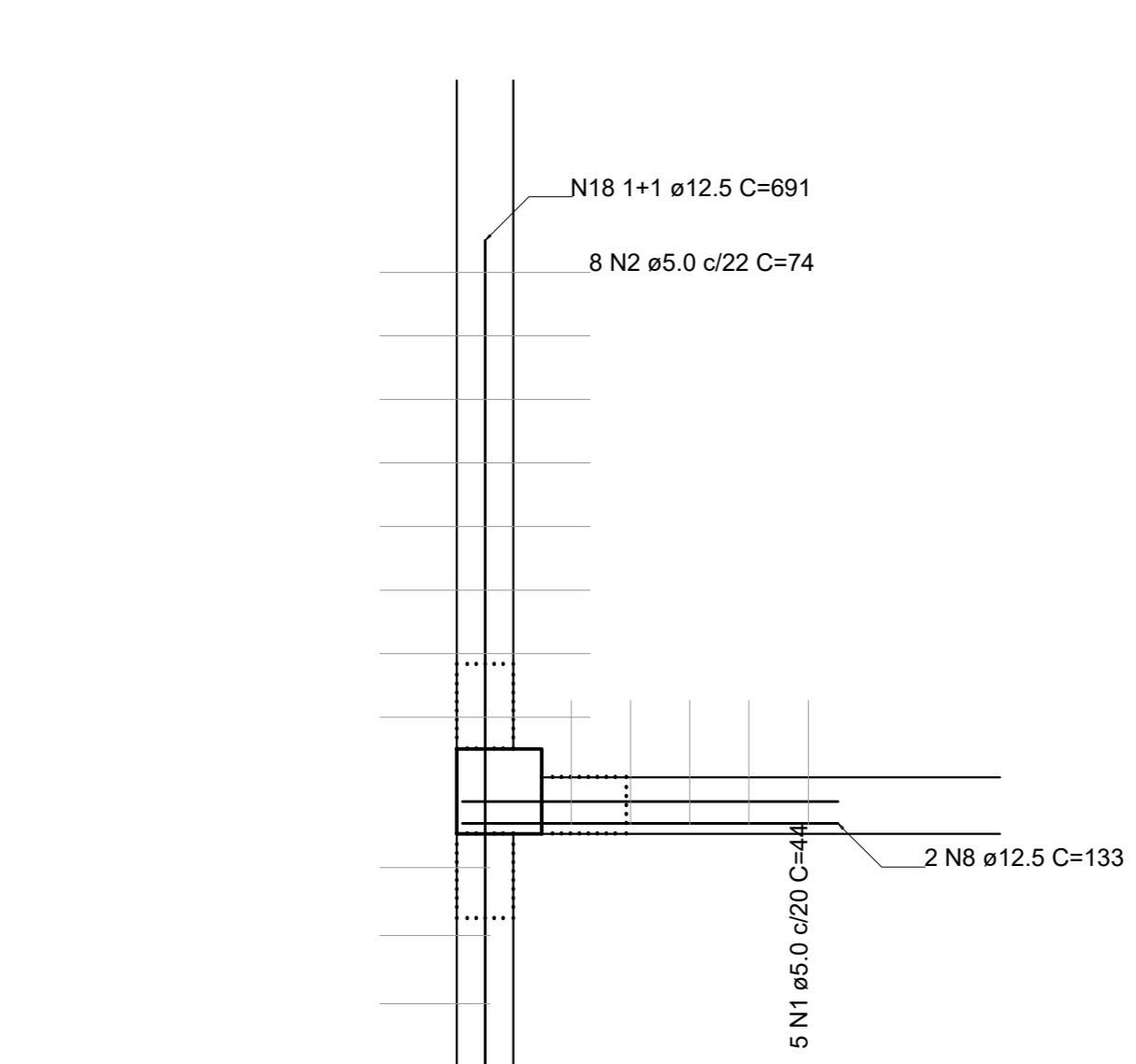
Continuidade P30  
esc. 1:25



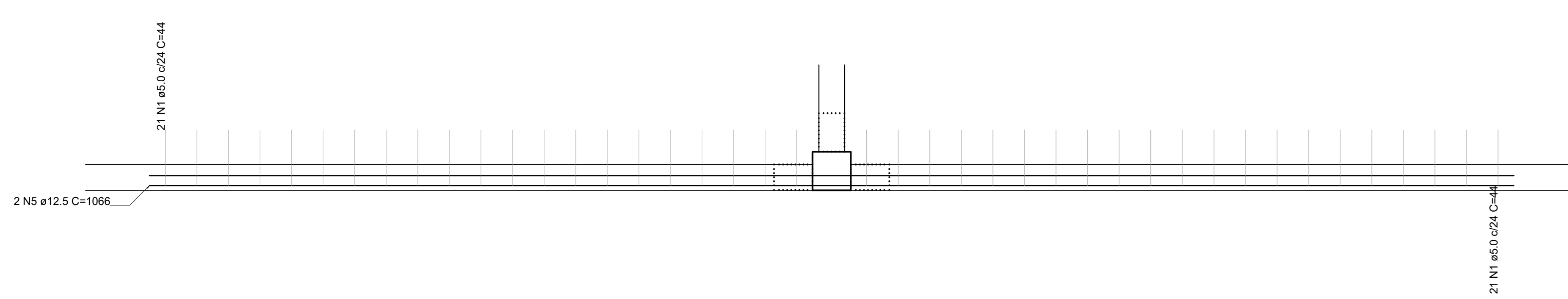
Continuidade P31  
esc. 1:25



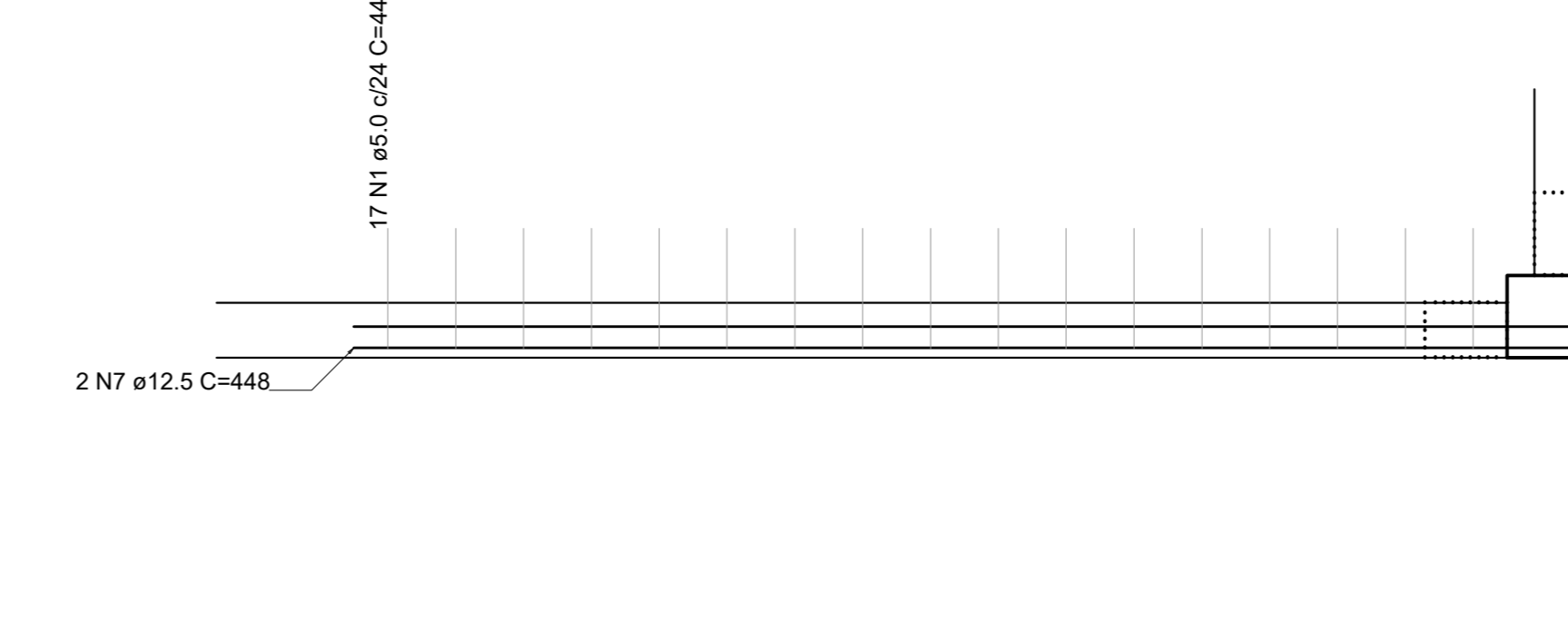
Continuidade P32  
esc. 1:25



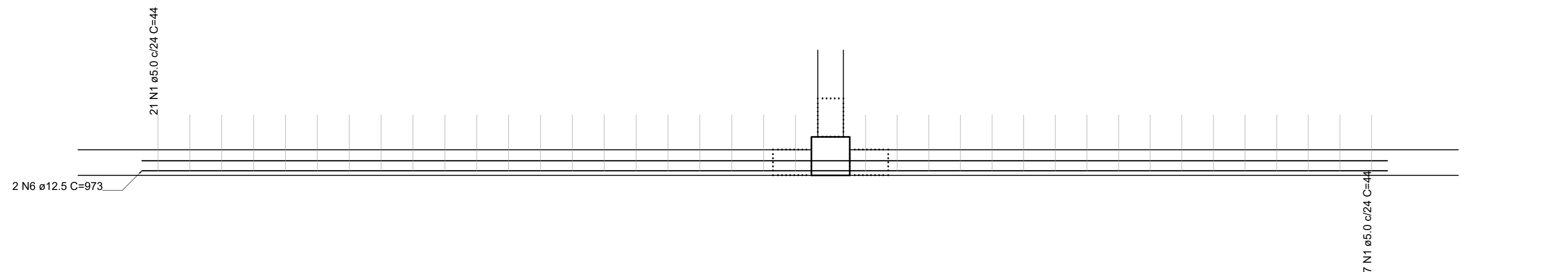
Continuidade P33  
esc. 1:25



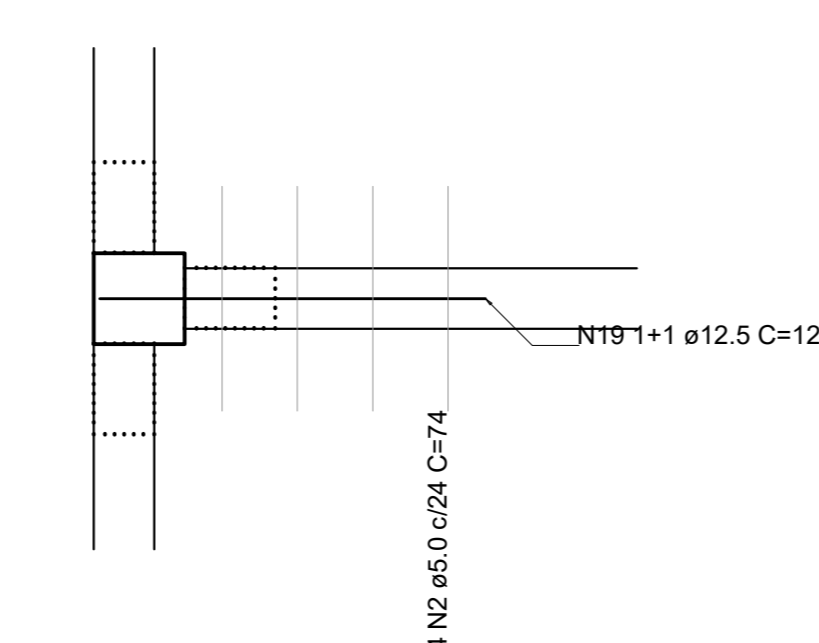
Continuidade P35  
esc. 1:25



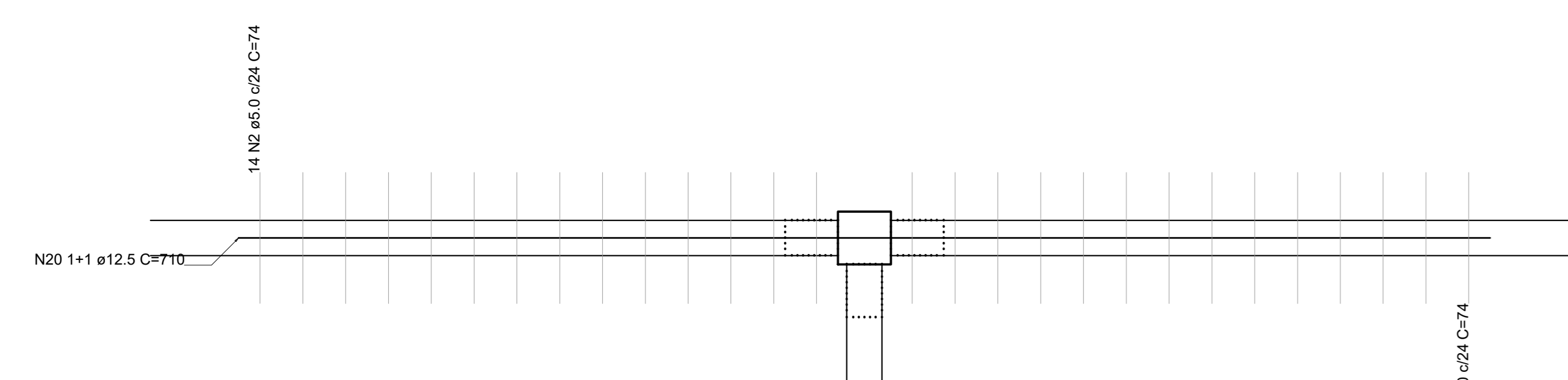
Continuidade P34  
esc. 1:25



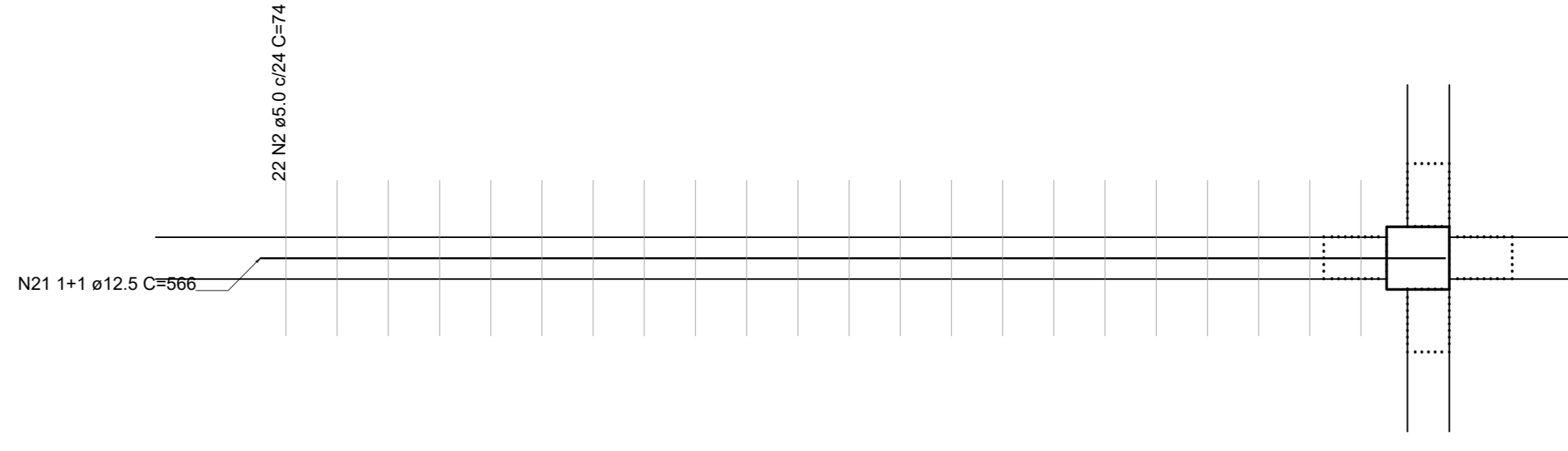
Continuidade P36  
esc. 1:25



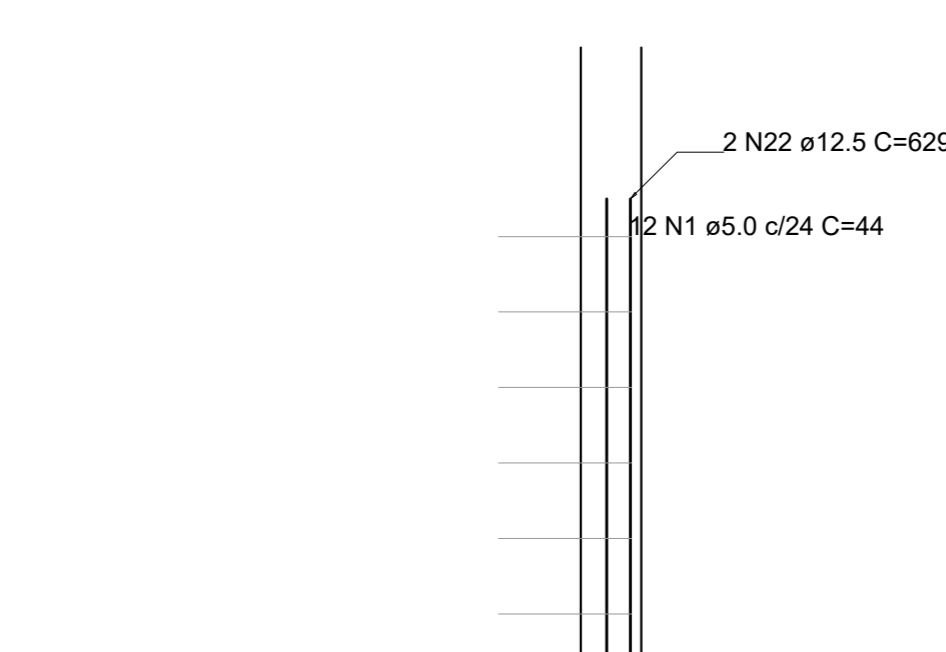
Continuidade P37  
esc. 1:25



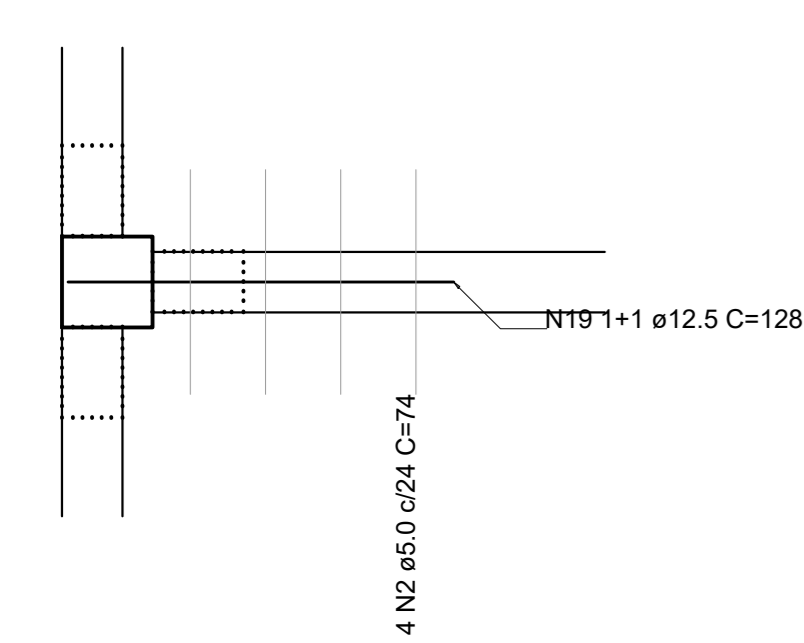
Continuidade P38  
esc. 1:25



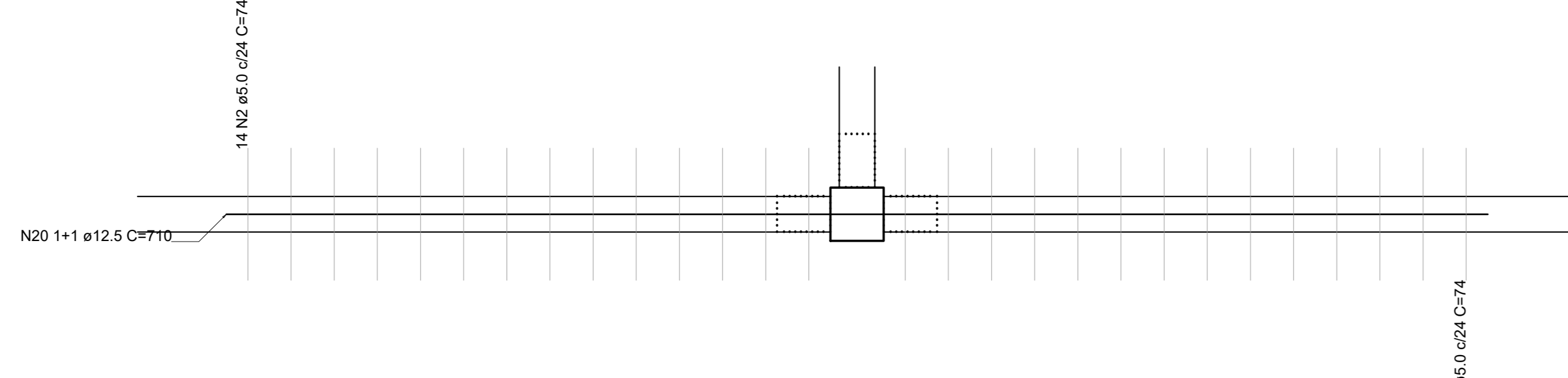
Continuidade P39  
esc. 1:25



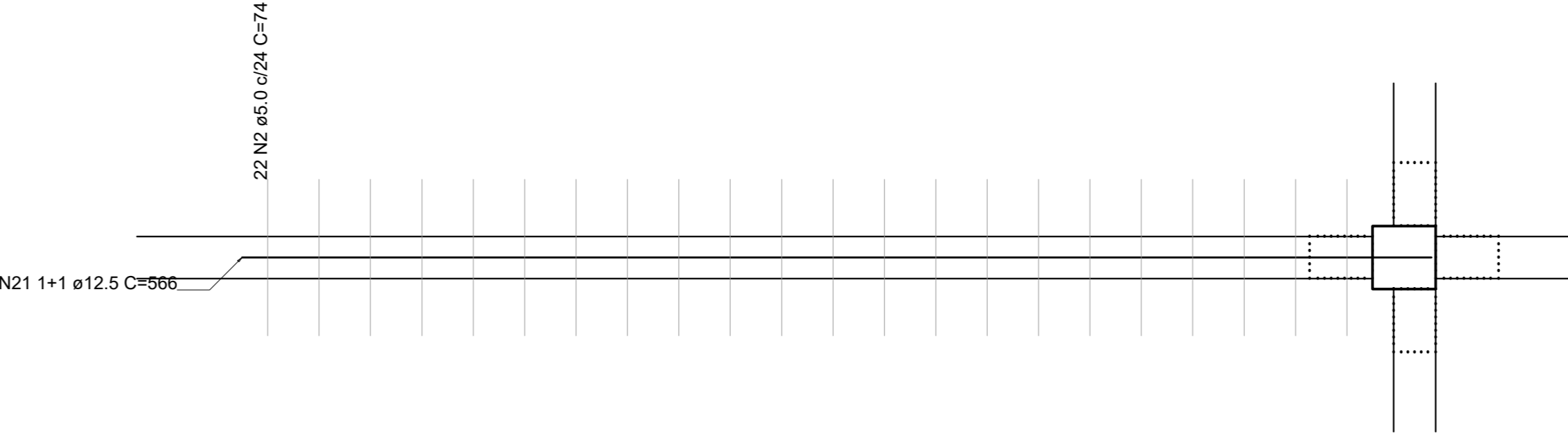
Continuidade P40  
esc. 1:25



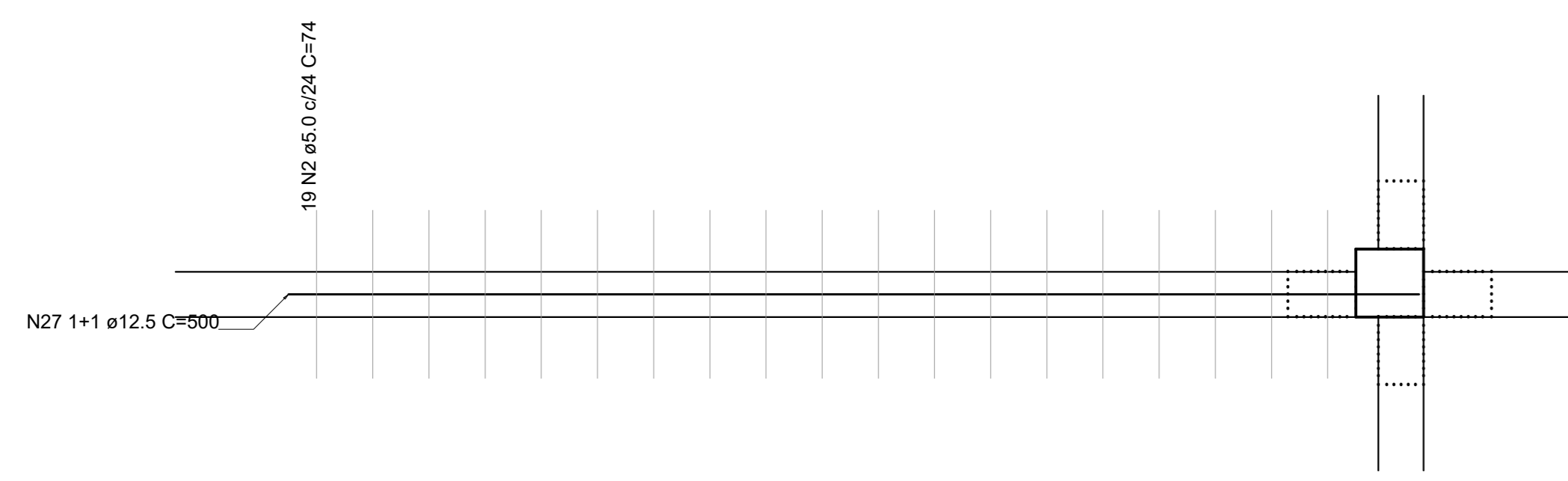
Continuidade P41  
esc. 1:25



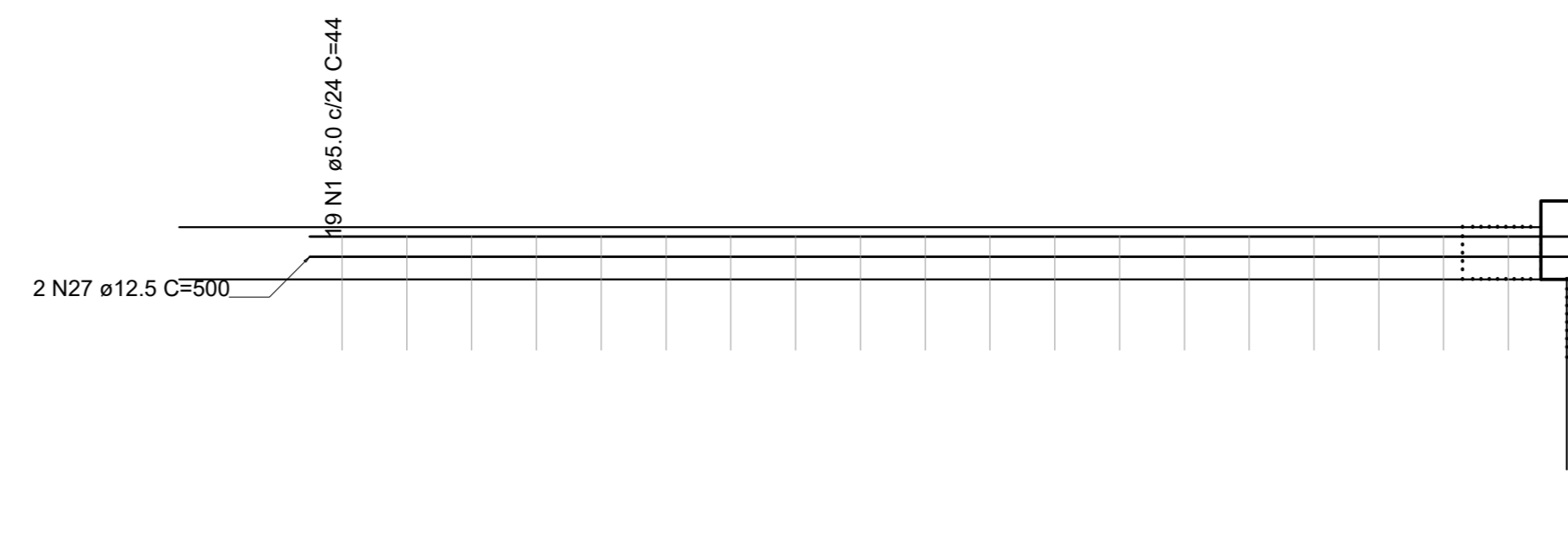
Continuidade P42  
esc. 1:25



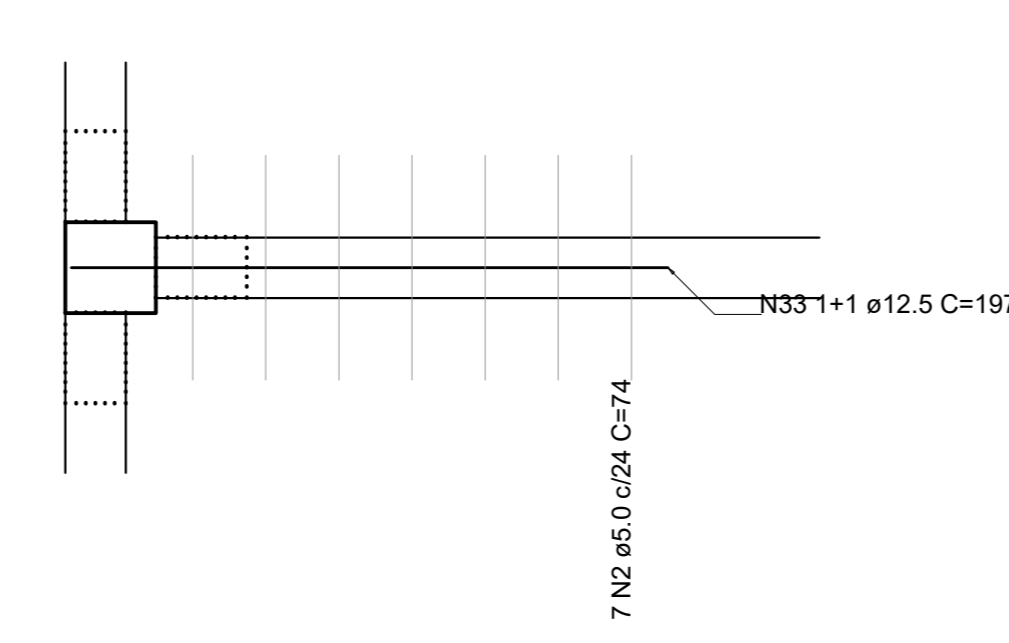
Continuidade P46  
esc. 1:25



Continuidade P48  
esc. 1:25



Continuidade P53  
esc. 1:25



REV. 00		31/01/23	EMISSÃO INICIAL	DAC
REVISÃO		DATA	DESCRIÇÃO	RESP.
CLIENTE				
 <p>Prefeitura Municipal de Pouso Alegre</p>		COORDENAÇÃO		
		ALDORE GALVÃO HERRERA		
 <p>DAC Engenharia</p> <p>Rua Miguel Vianna, nº 81, 2º Andar Bairro Monte Cristo CEP: 37500-000 - Itajubá / MG Tel: (35) 3623-8946 www.dacengenharia.com.br</p>		RESPONSÁVEL TÉCNICO E AUTOR		
		ENR. CIVIL FLÁVIA BARBOSA		
PROJETO				
CONSTRUÇÃO DO CENTRO DE ATENÇÃO PSICOSSOCIAL				
ENDEREÇO				DISCIPLINA
RUA PIRANGUINHO, B. SÃO JOÃO POUSO ALEGRE - MINAS GERAIS				ESTRUTURAL
ASSUNTO				FASE DO PROJETO
PROJETO ESTRUTURAL DETALHAMENTO DAS ARMADURAS LAJES ALVEOLARES - ARMAÇÃO COMPLEMENTAR				EXECUTIVO
DATA INICIAL				FOLHA Nº
31/01/2023				32/41
ESCALA		REVISÃO	ARQUIVO	
INDICADA		R01	DAC-PMPA-CAPS-PE-EST-R01.DWG	