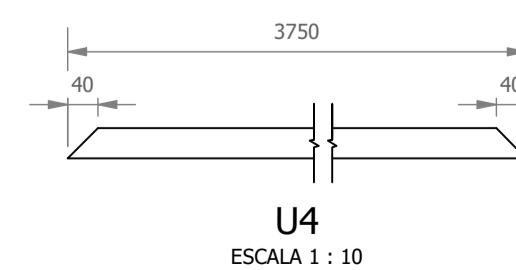
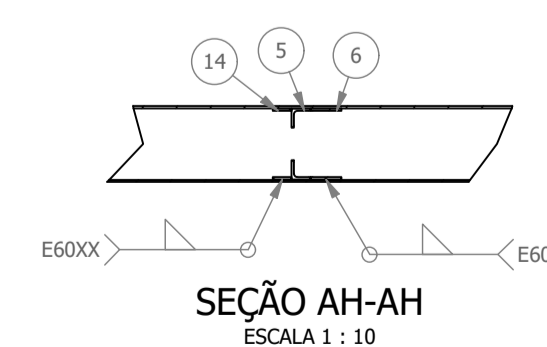
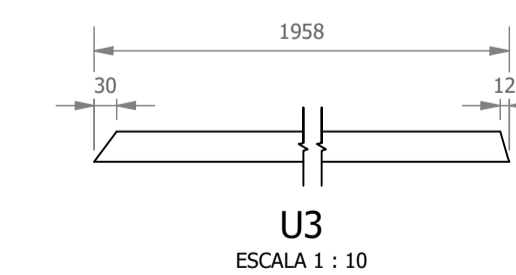
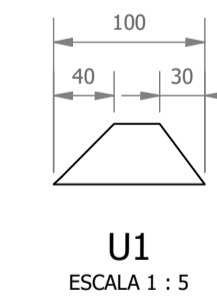
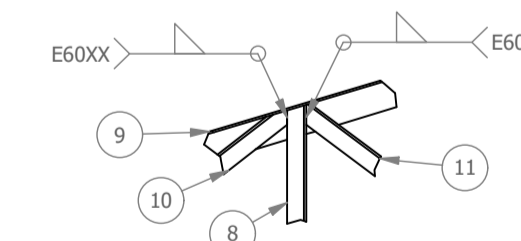
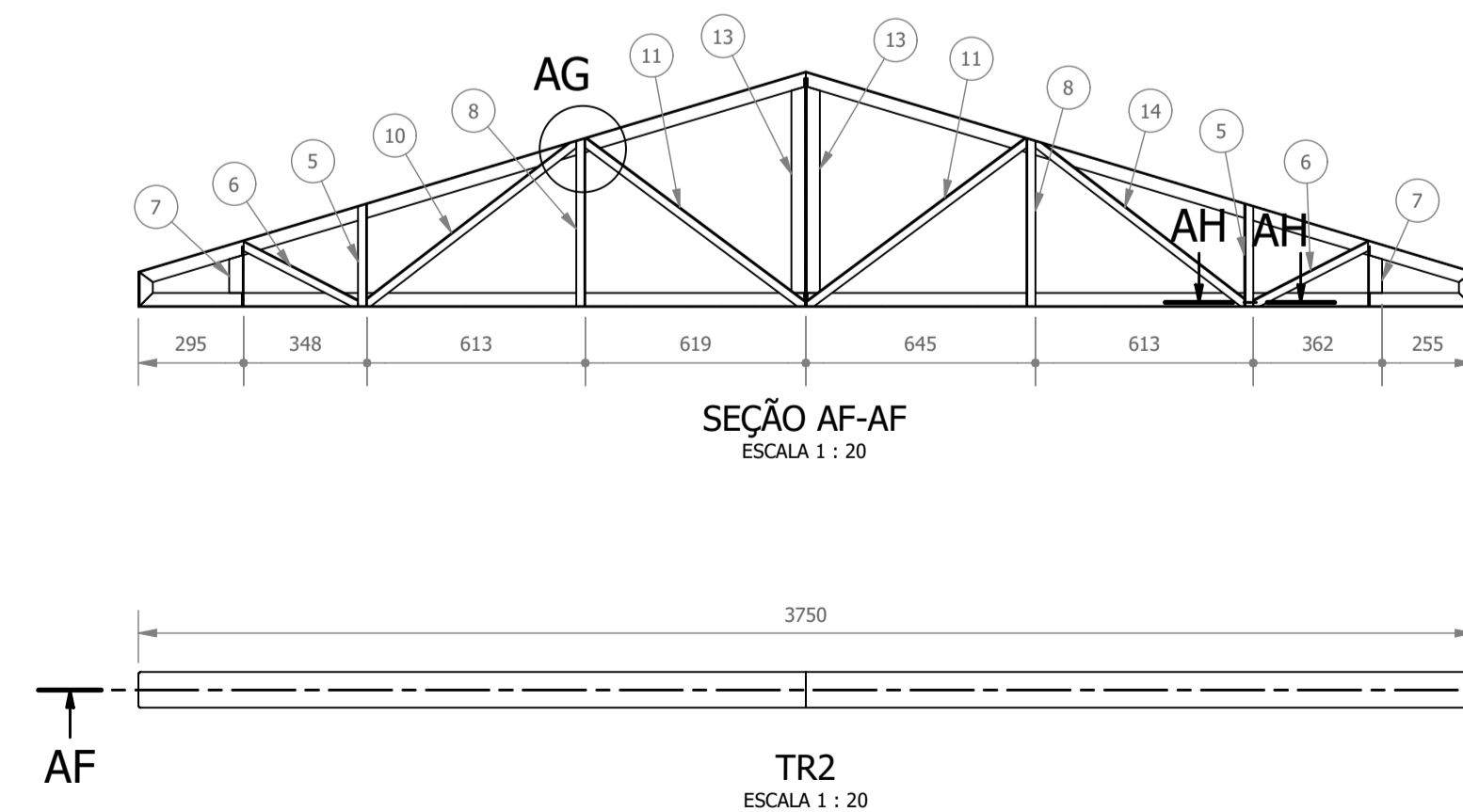
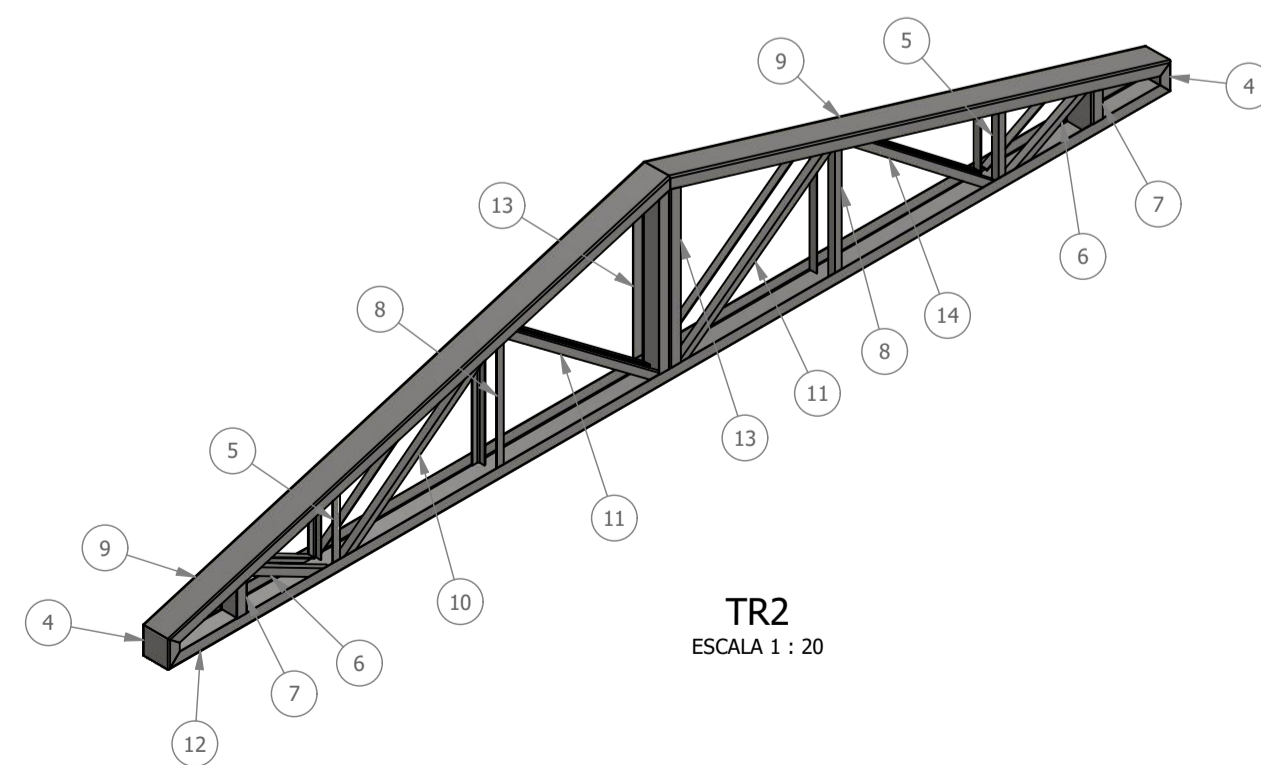
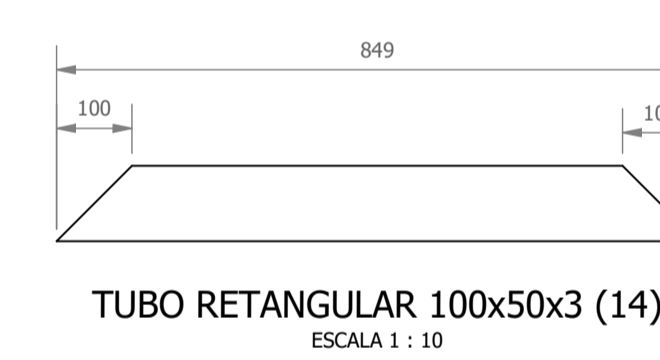
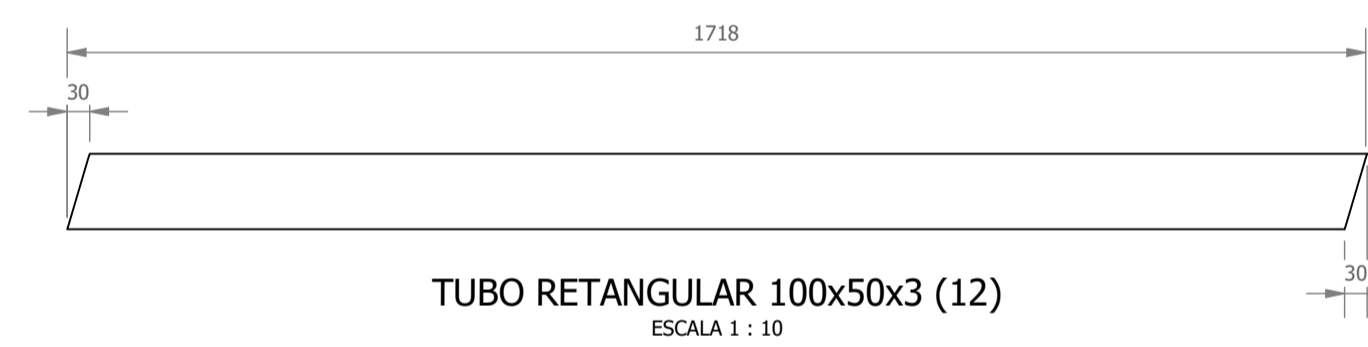
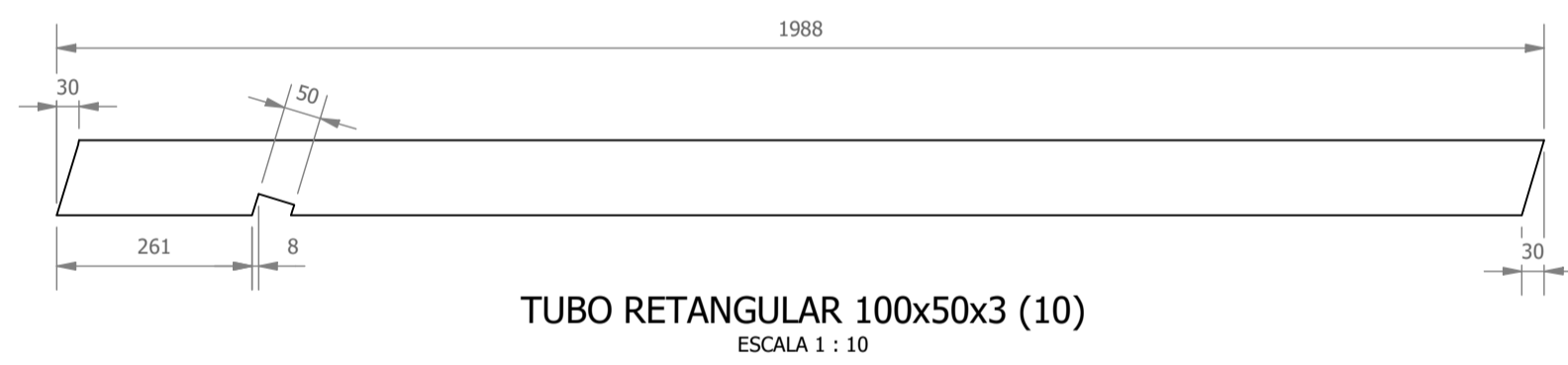
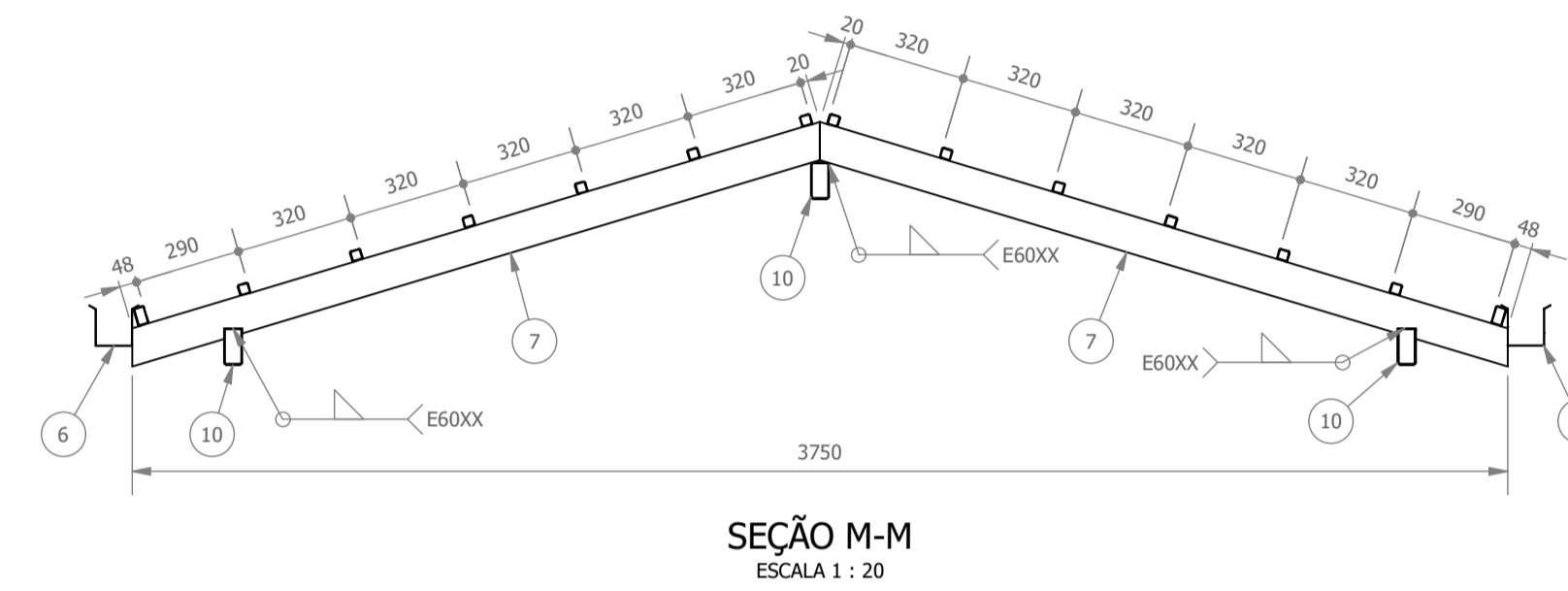
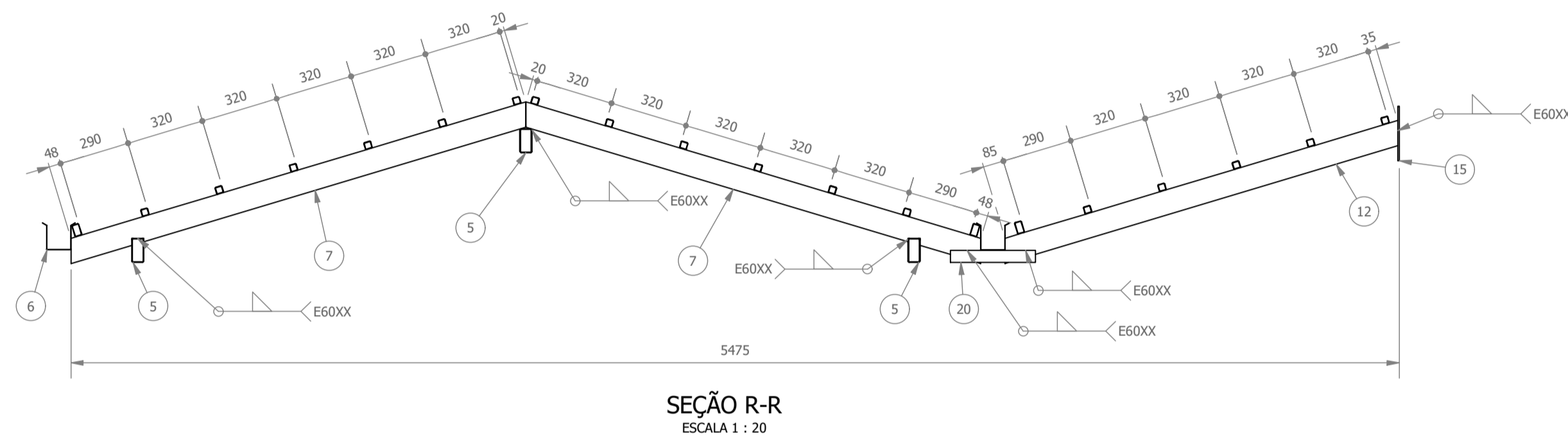
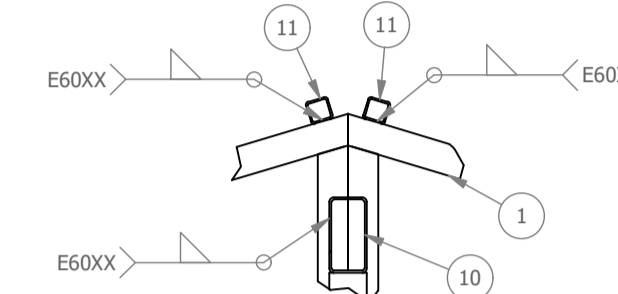
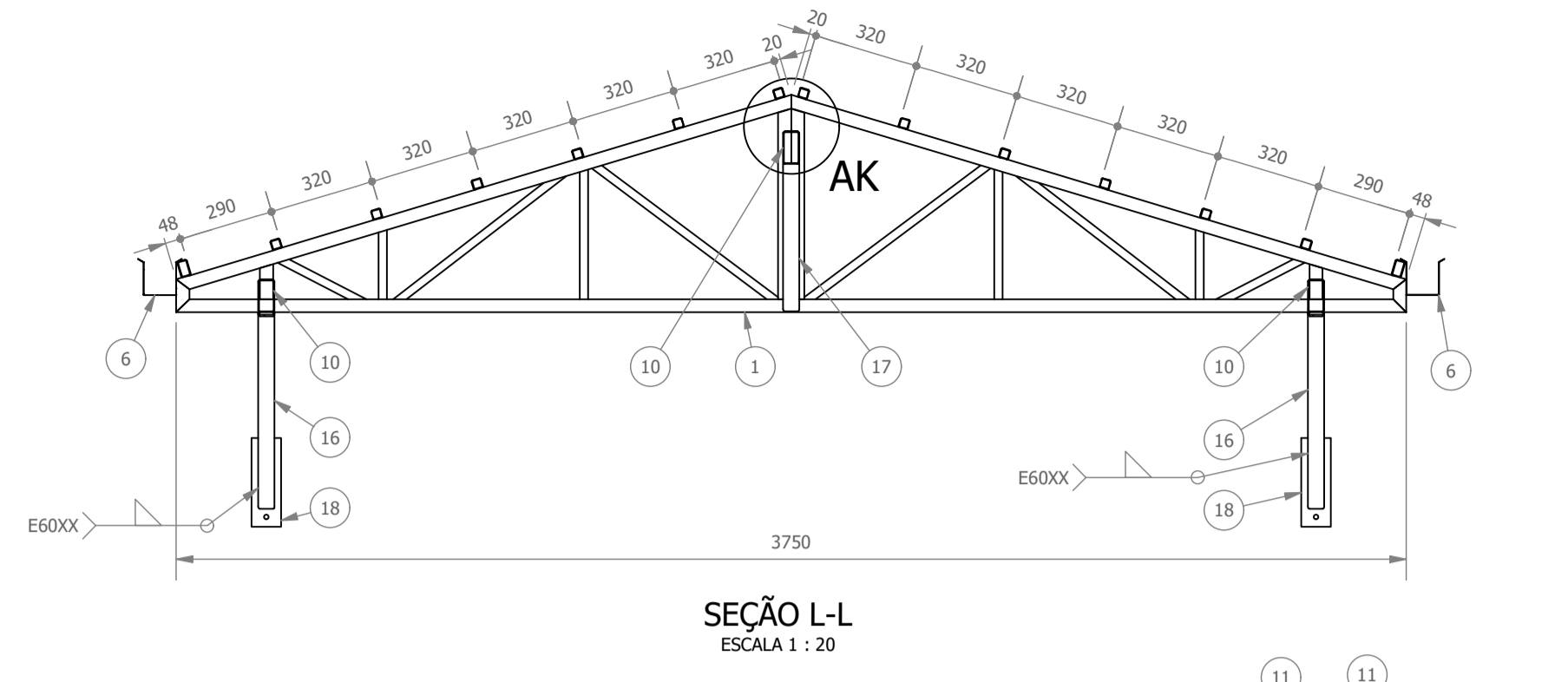
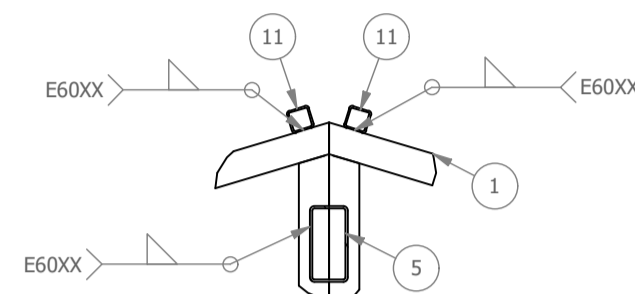
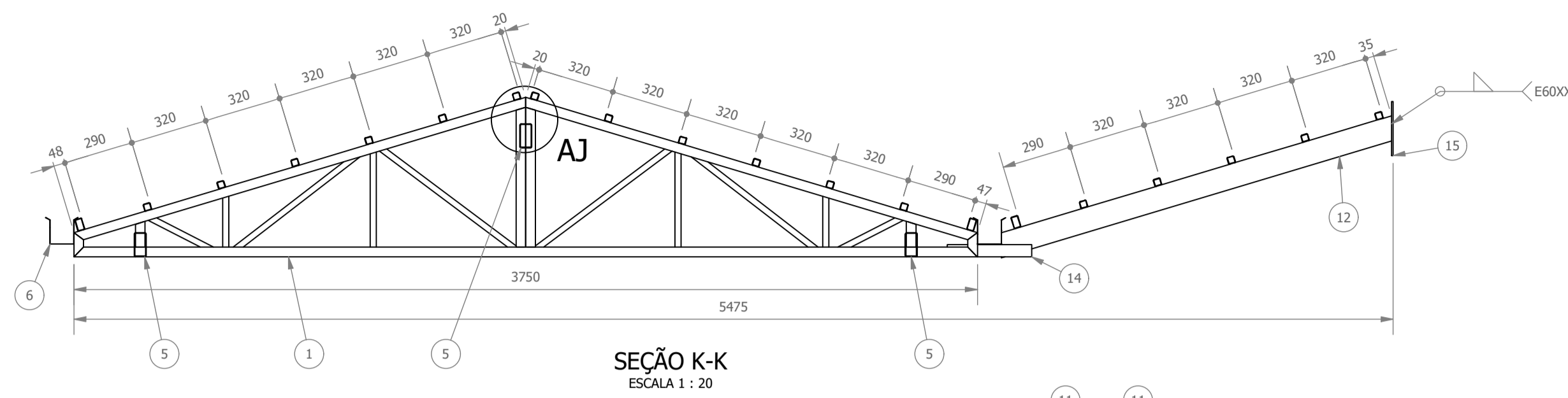


**PROJETO DE ESTRUTURA METÁLICA - REFORMA E AMPLIAÇÃO DA E.M. DOM OTÁVIO
ESCALA INDICADA**



LISTA DE PEÇAS - PASSARELA 1						
ID	ITEM	QTD	DESCRIÇÃO	COMPRIM.	MATERIAL	PESO UNIT.
1	TR2	5				45,8 kg
5	TUBO RETANGULAR 100x50x3 (6)	3	100 x 50 x 3	2800	Aço ASTM A36	18,5 kg
6	Calha 100x100x20	10	100 x 100 x 0.65	3000	Aço Galvanizado	5,2 kg
7	TUBO RETANGULAR 100x50x3 (10)	16	100 x 50 x 3	1988	Aço ASTM A36	12,8 kg
8	TUBO RETANGULAR 100x50x3 (7)	3	100 x 50 x 3	2340	Aço ASTM A36	15,4 kg
9	TUBO RETANGULAR 100x50x3 (8)	3	100 x 50 x 3	3400	Aço ASTM A36	22,4 kg
10	TUBO RETANGULAR 100x50x3 (9)	3	100 x 50 x 3	4060	Aço ASTM A36	26,8 kg
11	TUBO QUADRADO 30x30x2,25	70	30 x 30 x 2.25	3000	Aço ASTM A36	5,6 kg
12	TUBO RETANGULAR 100x50x3 (12)	4	100 x 50 x 3	1720	Aço ASTM A36	11,2 kg
14	TUBO RETANGULAR 50x30x2,25 (5)	2	50 x 30 x 2.25	225	Aço ASTM A36	0,6 kg
15	Ch2	4	225 x 170 x 6.35		Aço ASTM A36	1,9 kg
16	TUBO RETANGULAR 100x50x3 (14)	4	100 x 50 x 3	849	Aço ASTM A36	4,9 kg
17	TUBO RETANGULAR 100x50x3 (13)	3	100 x 50 x 3	636	Aço ASTM A36	3,5 kg
18	Ch3	4	270 x 90 x 6.35		Aço ASTM A36	1,2 kg
19	TUBO RETANGULAR 50x30x2,25	12	50 x 30 x 2.25	3000	Aço ASTM A36	7,7 kg
20	TUBO RETANGULAR 50x30x2,25 (4)	6	50 x 30 x 2.25	350	Aço ASTM A36	0,9 kg

LISTA DE PEÇAS - TRELIÇA TR2						
ID	ITEM	QTD	DESCRIÇÃO	COMPRIM.	MATERIAL	PESO UNIT.
4	U1	2	PERFIL U 100x40x2,65	100	Aço ASTM A36	0,3 kg
5	L1	4	CANTONEIRA L 1 x 1 x 1/8	287	Aço ASTM A36	0,3 kg
6	L2	4	CANTONEIRA L 1 x 1 x 1/8	370	Aço ASTM A36	0,4 kg
7	U2	2	PERFIL U 100x40x2,65	165	Aço ASTM A36	0,5 kg
8	L3	4	CANTONEIRA L 1 x 1 x 1/8	471	Aço ASTM A36	0,6 kg
9	U3	2	PERFIL U 100x40x2,65	1958	Aço ASTM A36	6,9 kg
10	L4	2	CANTONEIRA L 1 x 1 x 1/8	748	Aço ASTM A36	0,9 kg
11	L5	4	CANTONEIRA L 1 x 1 x 1/8	776	Aço ASTM A36	0,9 kg
12	U4	1	PERFIL U 100x40x2,65	3750	Aço ASTM A36	13,3 kg
13	U5	2	PERFIL U 100x40x2,65	638	Aço ASTM A36	2,2 kg
14	L6	2	CANTONEIRA L 1 x 1 x 1/8	745	Aço ASTM A36	0,9 kg

<p>Prefeitura Municipal de Pouso Alegre</p>	
<p>REV. 00 13/01/23 EMISSÃO INICIAL DAC</p> <p>REVISÃO DATA DESCRIÇÃO RESP.:</p>	<p>CLIENTE</p>
<p>PROJETO</p> <p>Rua Miguel Vianna, nº 81, sala 12 Bairro Morro Chic CEP: 37500-080 - Itajubá / MG Tel: (35) 3623-5720 www.dacengenharia.com.br</p>	<p>COORDENAÇÃO ALOÍSIO CAETANO FERREIRA</p> <p>RESPONSÁVEL TÉCNICO E AUTOR</p> <p>ENº: CIVIL F/11A C. BARBOSA CREA: MG-187.842/D</p>
<p>EMPRESAMENTO</p> <p>REFORMA E AMPLIAÇÃO DA E.M. DOM OTÁVIO</p>	
<p>ENDEREÇO RUA PROF. NEUZA S. DA MOTTA, 145 - B. J. ESPLANADA POUSO ALEGRE - MINAS GERAIS</p> <p>ASSUNTO PROJETO DE ESTRUTURA METÁLICA COBERTURAS E PASSARELAS DETALHAMENTO E LISTA DE MATERIAIS</p>	<p>DISCIPLINA METÁLICA</p> <p>FASE DO PROJETO EXECUTIVO</p> <p>FOLHA Nº: 03/05</p>
<p>DATA INICIAL 13/01/2023</p> <p>ESCALA INDICADA</p> <p>REVISÃO R00</p> <p>ARQUIVO DAC-PMPA-DOM-PE-MET-R00-03.DWG</p>	