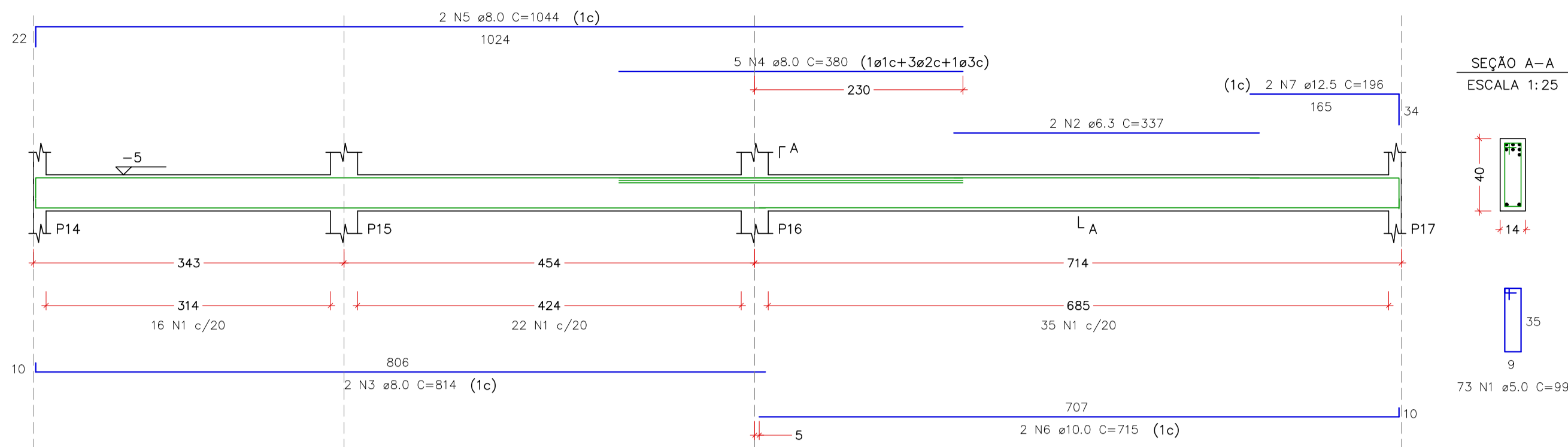
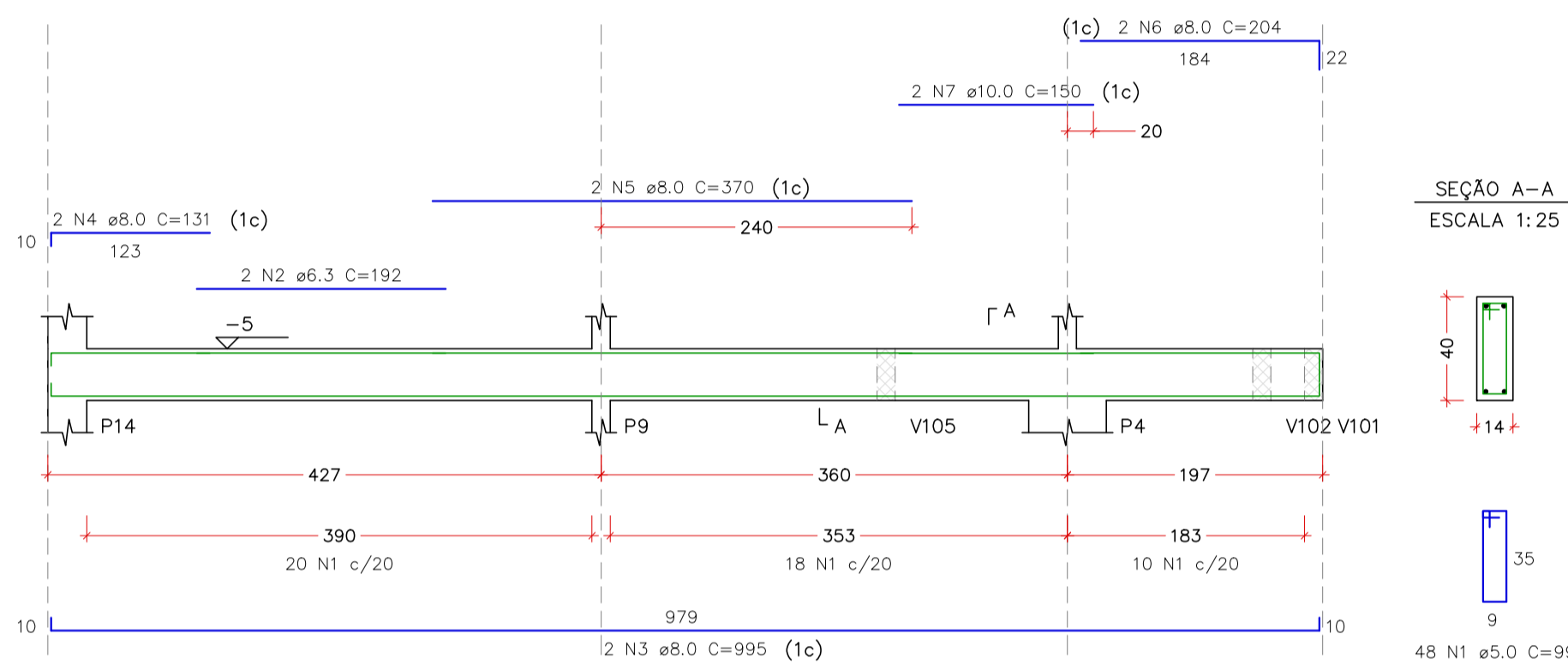


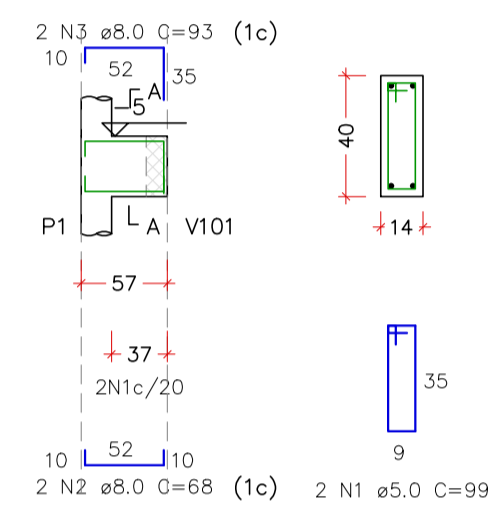
V107
ESCALA 1:50



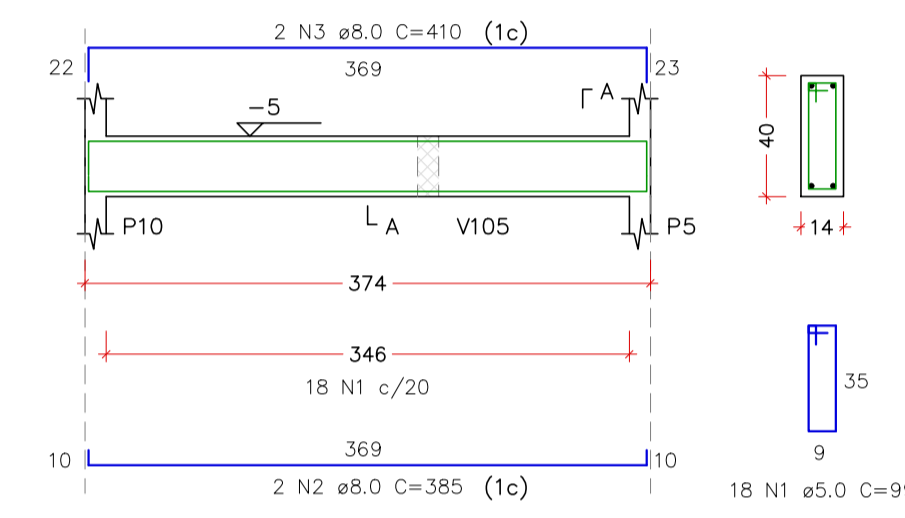
V108
ESCALA 1:50



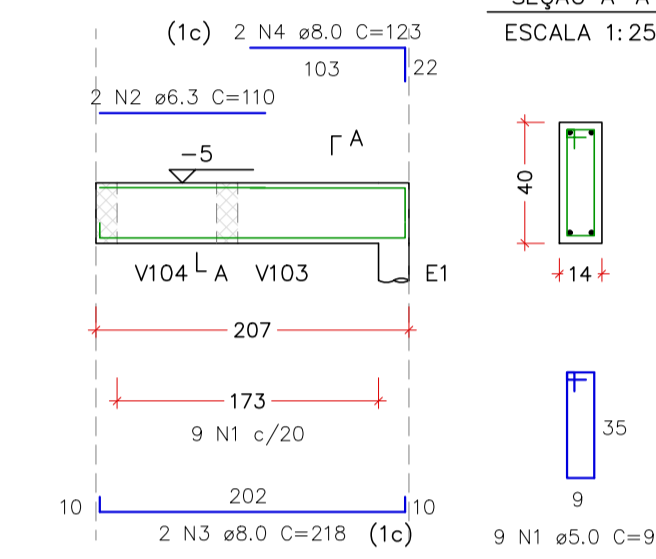
V109
ESCALA 1:50



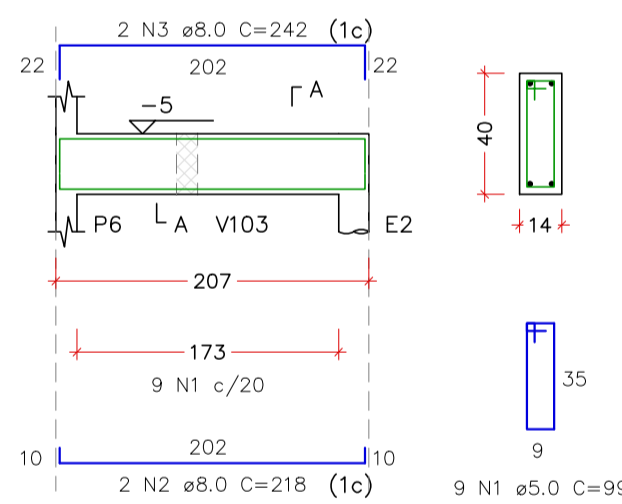
V110
ESCALA 1:50



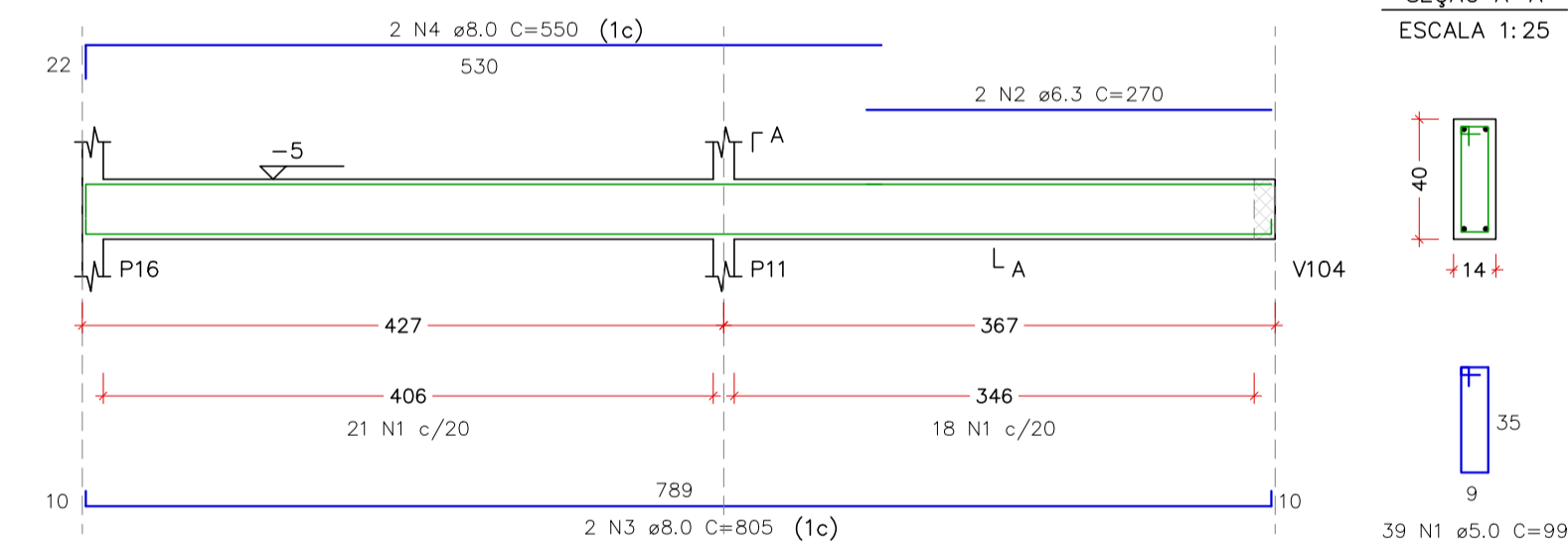
V111
ESCALA 1:50



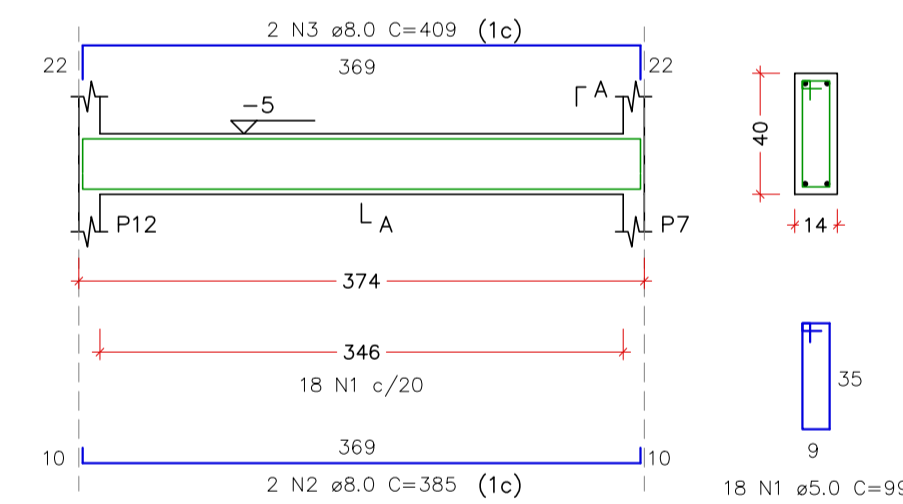
V112
ESCALA 1:50



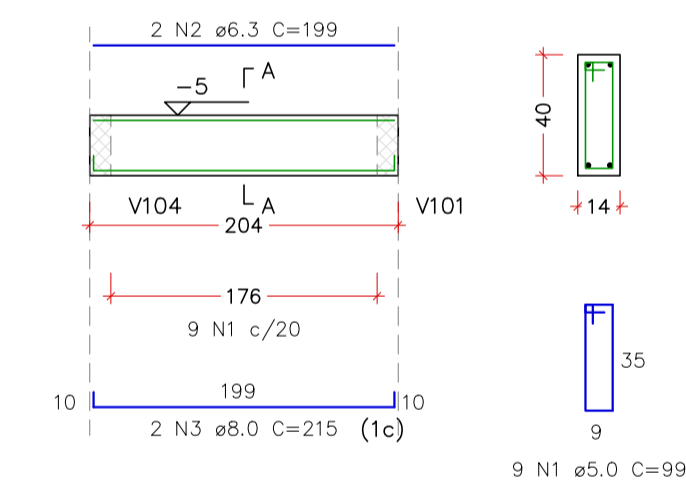
V113
ESCALA 1:50



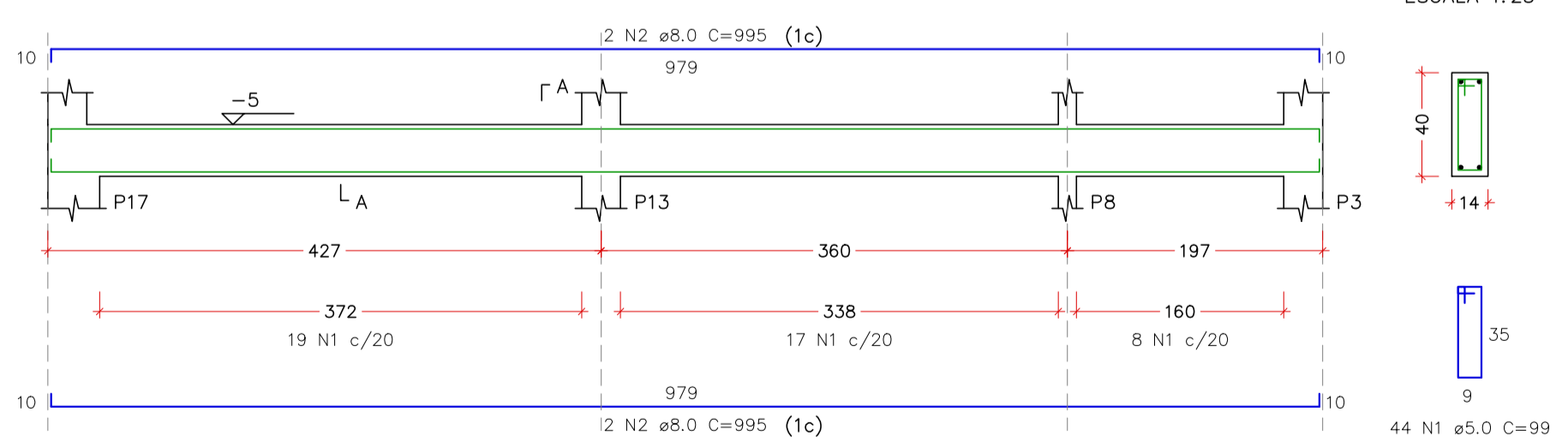
V114
ESCALA 1:50



V115
ESCALA 1:50



V116
ESCALA 1:50



RELAÇÃO DO AÇO

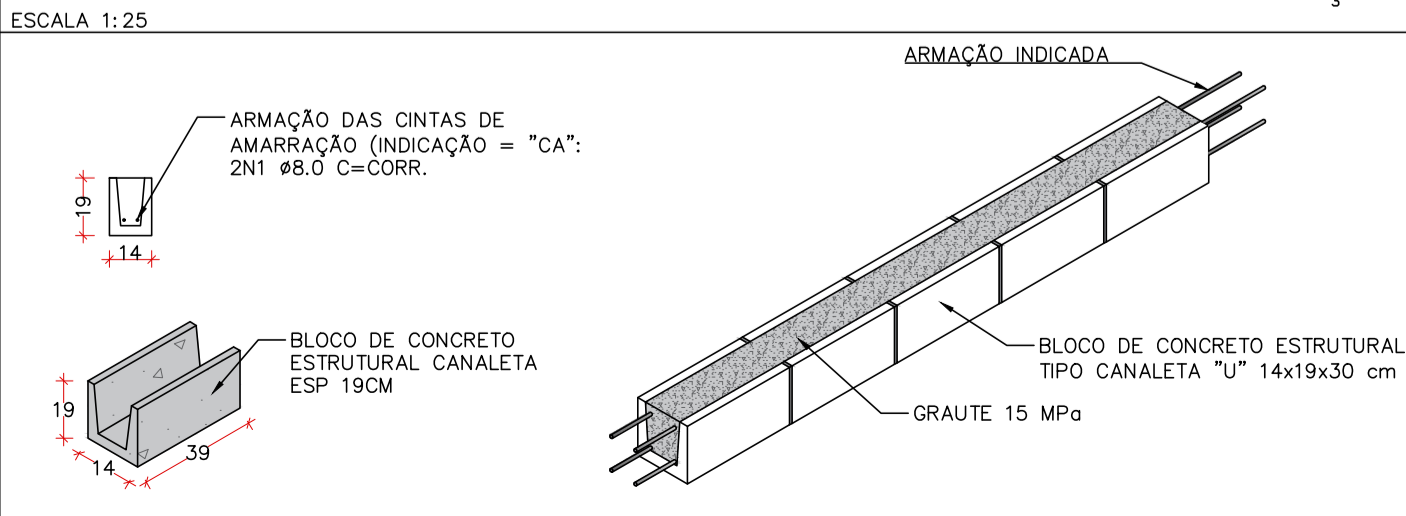
ELEMENTO	AÇO	N	DIAM (mm)	QUANT	C.UNIT (cm)	C.TOTAL (cm)
V107	CA60	1	5.0	73	99	7227
	CA50	2	6.3	2	337	674
	CA50	3	8.0	2	514	1628
	CA50	4	8.0	2	380	1900
	CA50	5	8.0	2	1044	2088
	CA50	6	10.0	2	715	1430
V108	CA50	7	12.5	196	392	
	CA60	1	5.0	48	99	4752
	CA50	2	6.3	2	192	384
	CA50	3	8.0	2	995	1990
	CA50	4	8.0	2	131	262
	CA50	5	8.0	2	370	740
V109	CA50	6	8.0	2	204	408
	CA50	7	10.0	1	150	300
	CA50	1	5.0	2	99	198
	CA50	2	8.0	2	68	136
	CA50	3	8.0	2	93	186
	CA60	1	5.0	18	99	1782
V110	CA50	2	8.0	385	770	
	CA50	3	8.0	2	410	820
	CA60	1	5.0	99	99	891
	CA50	2	6.3	110	220	
	CA50	3	8.0	2	218	436
	CA50	4	8.0	2	123	246
V111	CA60	1	5.0	99	99	891
	CA50	2	6.3	110	220	
	CA50	3	8.0	2	218	436
	CA50	4	8.0	2	123	246
	CA60	1	5.0	99	99	891
	CA50	2	6.3	110	220	
V112	CA50	1	5.0	99	99	891
	CA50	2	6.3	110	220	
	CA50	3	8.0	2	218	436
	CA50	4	8.0	2	123	246
	CA60	1	5.0	99	99	891
	CA50	2	6.3	110	220	
V113	CA50	3	8.0	2	218	436
	CA50	4	8.0	2	123	246
	CA60	1	5.0	99	99	891
	CA50	2	6.3	110	220	
	CA50	3	8.0	2	218	436
	CA50	4	8.0	2	123	246
V114	CA50	1	5.0	99	99	891
	CA50	2	6.3	110	220	
	CA50	3	8.0	2	218	436
	CA50	4	8.0	2	123	246
	CA60	1	5.0	99	99	891
	CA50	2	6.3	110	220	
V115	CA50	1	5.0	99	99	891
	CA50	2	6.3	110	220	
	CA50	3	8.0	2	218	436
	CA60	1	5.0	44	99	4356
	CA50	2	6.3	2	199	398
	CA50	3	8.0	2	215	430
V116	CA60	1	5.0	44	99	4356
	CA50	2	8.0	4	995	3980

RESUMO DO AÇO

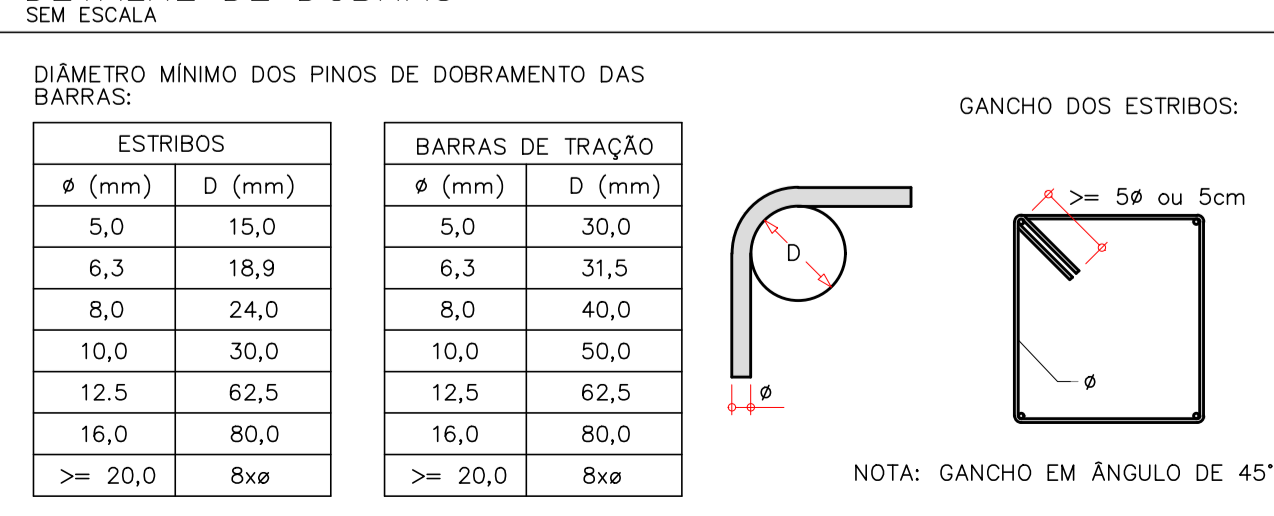
AÇO	DIAM (mm)	C.TOTAL (m)	PESO + 10% (kg)
CA50	6.3	22.2	6
CA50	8.0	212.4	92.2
CA50	10.0	17.3	11.7
CA50	12.5	3.9	4.2
CA60	5.0	266.3	45.2
PESO TOTAL			
CA50		114	
CA60		45.2	

VOLUME DE CONCRETO (C-30) = 2.91 m³
AREA DE FORMA = 48.93 m²

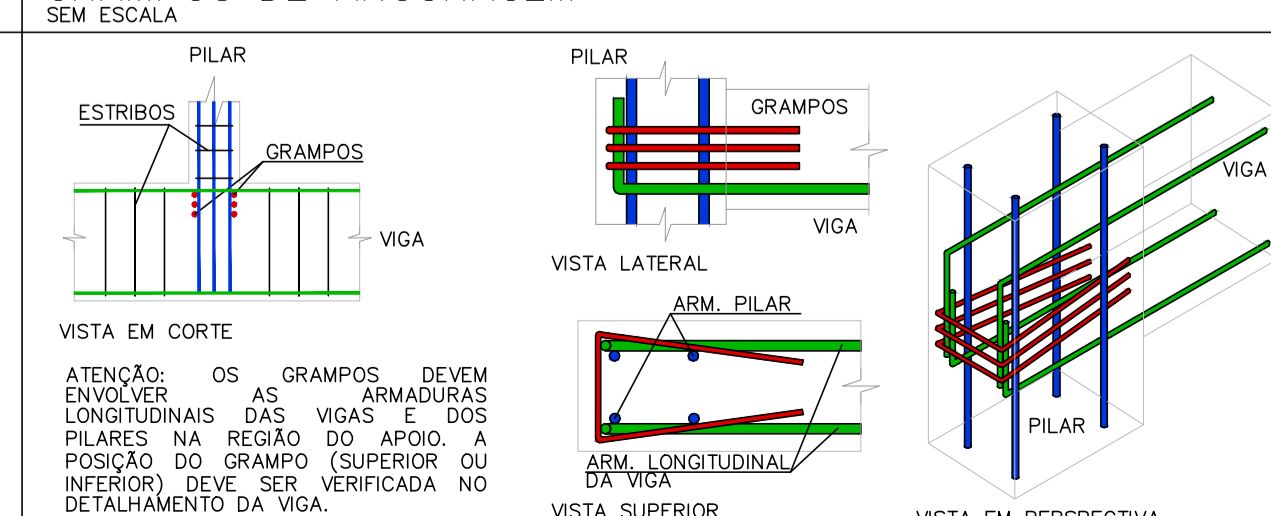
DETALHE TÍPICO DO BLOCO CANALETA E DA CINTA DE AMARRAÇÃO
ESCALA 1:25



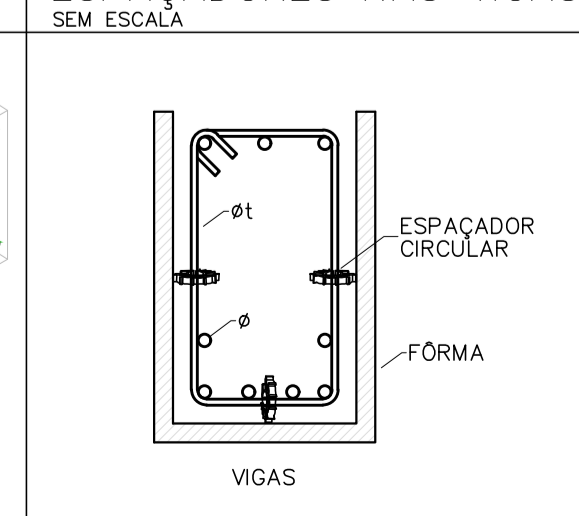
DETALHE DE DOBRAS
SEM ESCALA



GRAMPOS DE ANCORAGEM
SEM ESCALA



ESPAÇADORES NAS VIGAS
SEM ESCALA



REV. 00	18/06/24	EMIÇÃO INICIAL	DAC
REVISÃO	DATA	DESCRIÇÃO	RESP.

CLIENTE



PROJETO: RUA VENERANDO SCODELER, 341, Bairro Varginha, CEP: 37501-052 - Itajubá / MG, Tel: (35) 3623-8846, www.dacengenharia.com.br

COORDENAÇÃO: ALOISIO CAETANO FERREIRA

RESPONSÁVEL TÉCNICO E AUTOR: ENG. FLÁVIA C. BARBOSA

MG-187.842/D

EMPRESAMENTO: CONSTRUÇÃO DO REFEITÓRIO DA E.M. VASCONCELOS COSTA

ENDEREÇO: RUA VENERANDO SCODELER, BELLA ITÁLIA, POUSO ALEGRE - MINAS GERAIS

ASSUNTO: PROJETO ESTRUTURAL EM CONCRETO ARMADO, REFEITÓRIO, DETALHAMENTO DAS VIGAS DO PAVIMENTO TÉRREO

DISCIPLINA: ESTRUTURAL

FASE DO PROJETO: EXECUTIVO

FOLHA Nº: 07/13

DATA INICIAL: 18/06/2024, INDICADA, REVISÃO: R00, ARQUIVO: DAC-PMPA-RVAS-PE-EST-R00.DWG