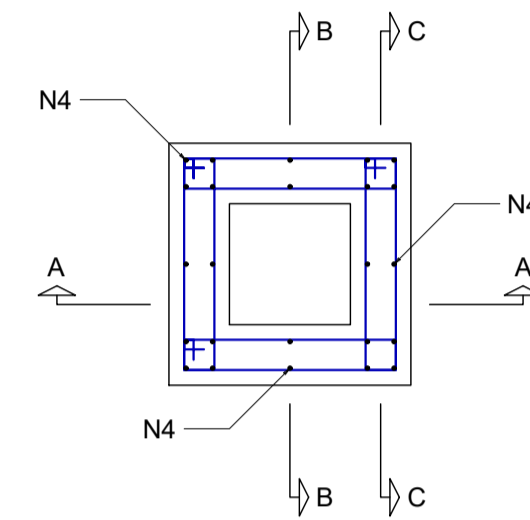
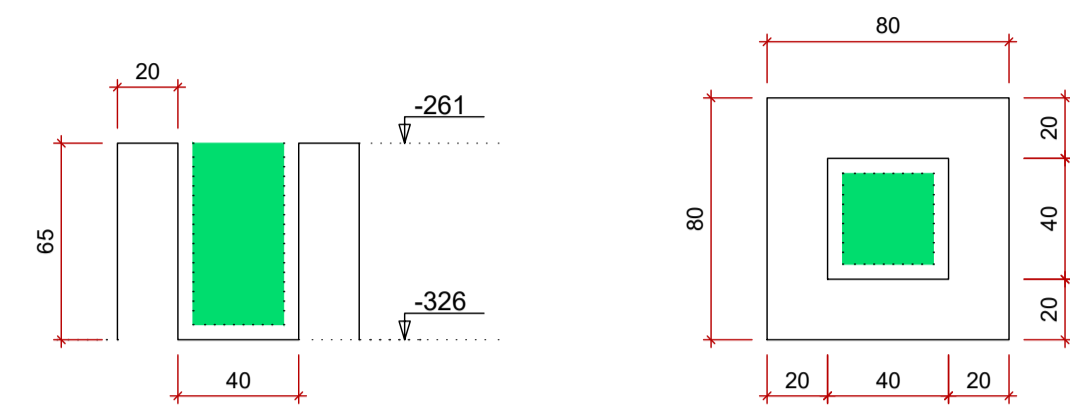
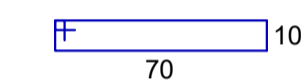


Cálice PM26

ESC 1:25



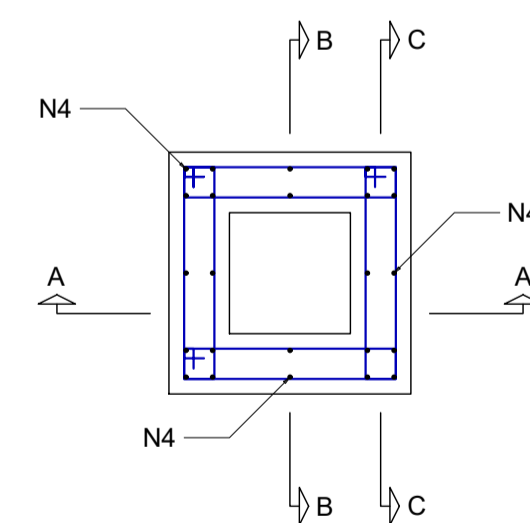
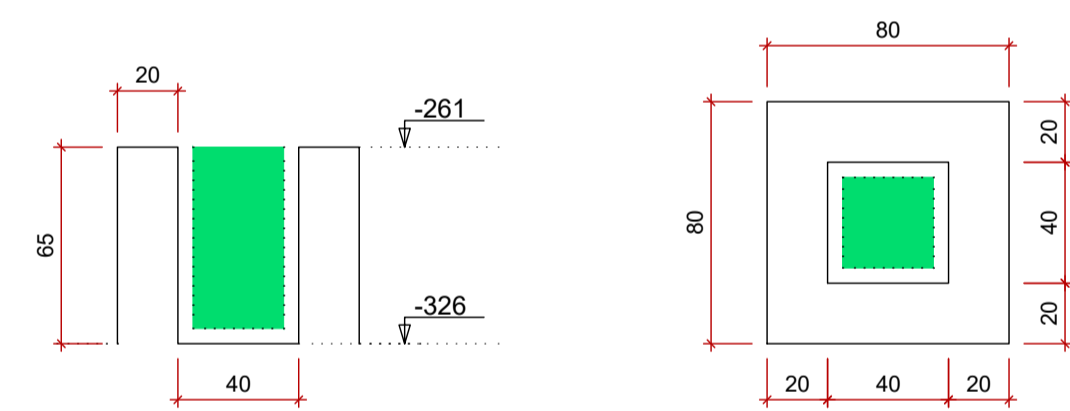
2x2 N3 ø6.3 c/12 C=172
2x7 N3 ø6.3 c/6 C=172



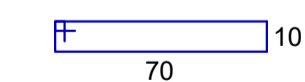
2x2 N3 ø6.3 c/12 C=172
2x7 N3 ø6.3 c/6 C=172

Cálice (PM36=PM46)

ESC 1:25



2x2 N3 ø6.3 c/12 C=172
2x7 N3 ø6.3 c/6 C=172

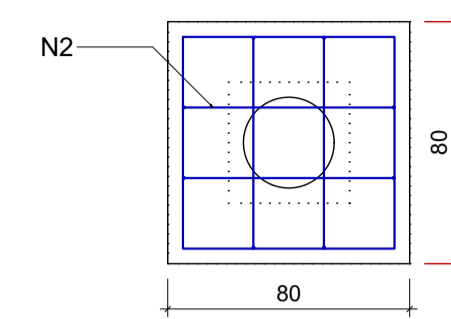


2x2 N3 ø6.3 c/12 C=172
2x7 N3 ø6.3 c/6 C=172

BM36=BM46

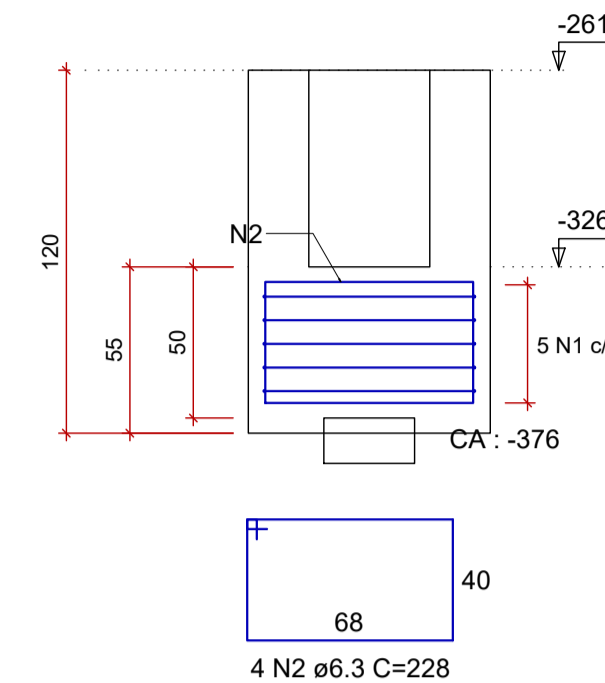
1xC30

PLANTA
ESCALA 1:25



5 N1 ø6.3 C=292

CORTE
ESCALA 1:25

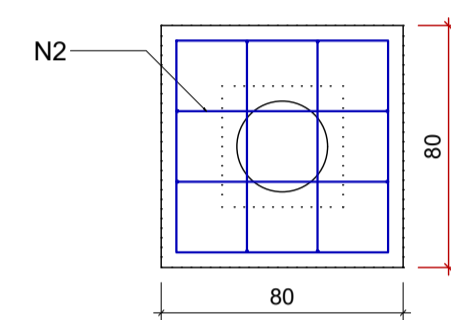


4 N2 ø6.3 C=228

BM52=BM67=BM74=BM86=BM93=BM104

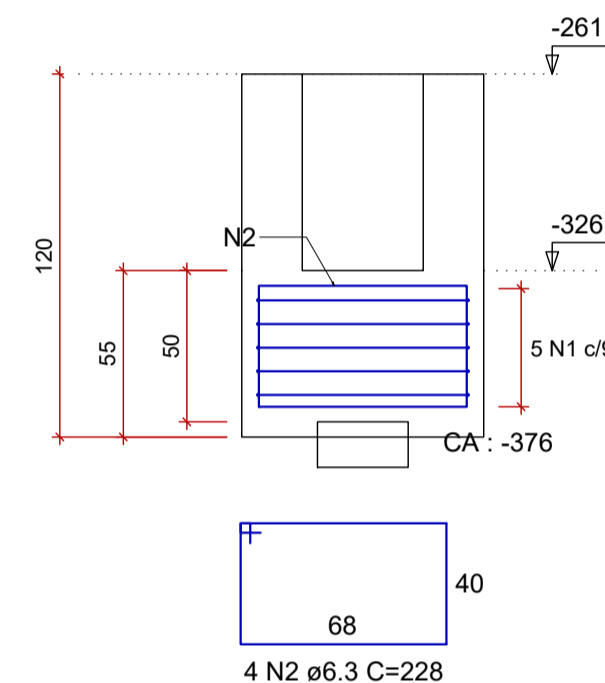
1xC30

PLANTA
ESCALA 1:25



5 N1 ø6.3 C=292

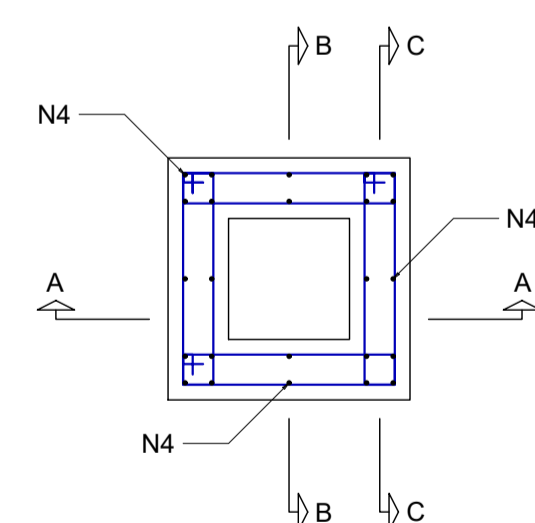
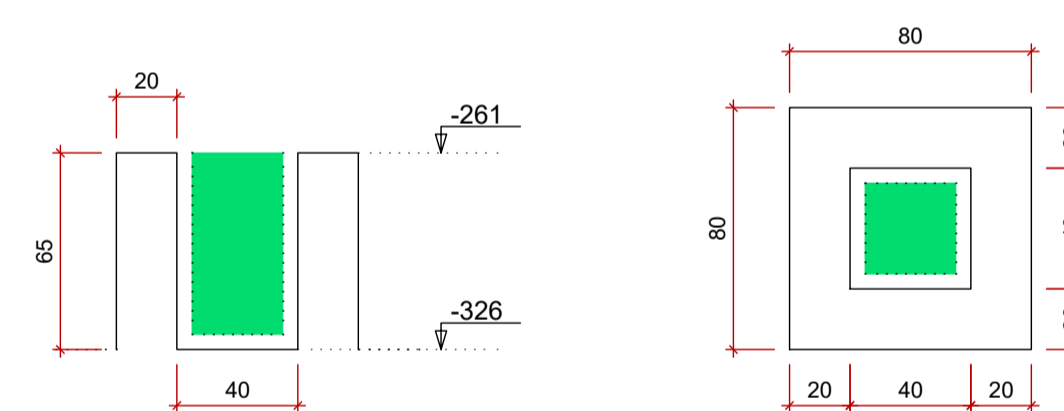
CORTE
ESCALA 1:25



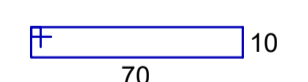
4 N2 ø6.3 C=228

Cálice (PM52=PM67=PM74=PM86=PM93=PM104)

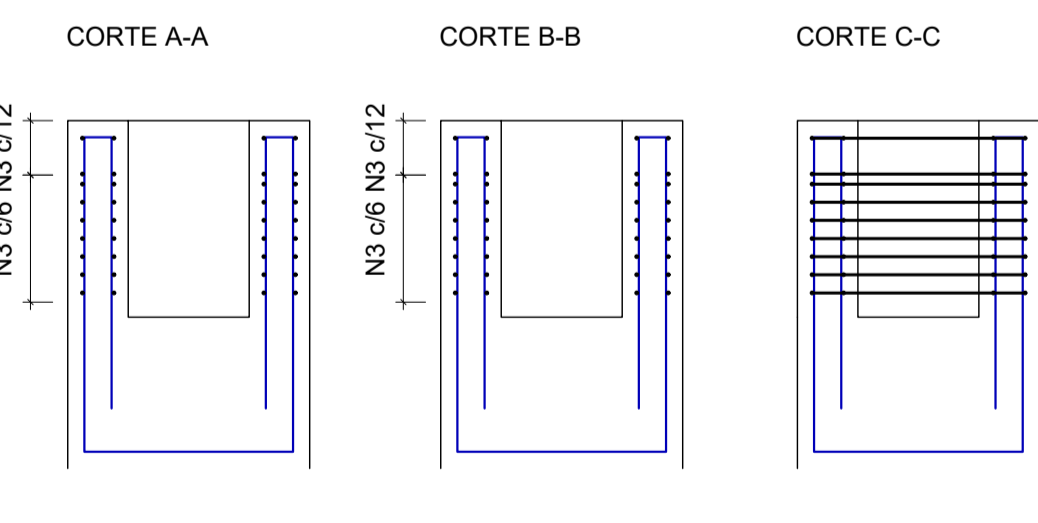
ESC 1:25



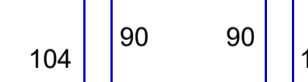
2x2 N3 ø6.3 c/12 C=172
2x7 N3 ø6.3 c/6 C=172



2x2 N3 ø6.3 c/12 C=172
2x7 N3 ø6.3 c/6 C=172



2x2 N3 ø6.3 c/12 C=172
2x7 N3 ø6.3 c/6 C=172



2x2 N3 ø6.3 c/12 C=172
2x7 N3 ø6.3 c/6 C=172

RELAÇÃO DO AÇO

2xBM46 6xBM104 Cálice PM26
2xCálice PM46 6xCálice PM104

AÇO	N	DIAM (mm)	QUANT	C.UNIT (cm)	C.TOTAL (cm)
CA50	1	6.3	40	292	11680
	2	6.3	32	228	7296
	3	6.3	324	172	55728
	4	8.0	54	464	25056

RESUMO DO AÇO

AÇO	DIAM (mm)	C.TOTAL (m)	PESO + 10% (kg)
CA50	6.3	747	201.1
	8.0	250.6	108.8

PESO TOTAL (kg)
CA50 309.8

Volume de concreto (C-25) = 5.28 m³
Área de forma = 43.20 m²

REV.	DATA	DESCRIÇÃO	RESP.
REV. 02	07/07/23	CONFORME SOLICITAÇÕES DA VIGILANCIA SANITÁRIA	DAC
REV. 01	28/04/23	CONFORME SOLICITAÇÕES DA VIGILANCIA SANITÁRIA	DAC
REV. 00	31/01/23	EMISSÃO INICIAL	DAC
REVISÃO:	DATA:	DESCRIÇÃO:	RESP.:

CLIENTE

Prefeitura Municipal de Pouso Alegre

PROJETO

DAC Engenharia

Rua Miguel Vianna, nº 81, 2º Andar
Bairro Morro Chic
CEP: 37500-080 - Itajubá / MG
Tel: (35) 3623-8846
www.dacengenharia.com.br

COORDENAÇÃO
ALOÍSIO CAETANO FERREIRA

RESPONSÁVEL TÉCNICO E AUTOR
ENGR. CIVIL FLÁVIA BARBOSA CREA-MG-187.842/D

EMPRESAMENTO

CONSTRUÇÃO DA UNIDADE DE PRONTO ATENDIMENTO

ENDEREÇO
RUA PIRANGUINHO, B. SÃO JOÃO
POUSO ALEGRE - MINAS GERAIS

ASSUNTO
PROJETO ESTRUTURAL
DETALHAMENTO DOS BLOCOS DE COROAMENTO E CÁLICES
LISTA DE MATERIAIS

DISCIPLINA
ESTRUTURAL

FASE DO PROJETO
EXECUTIVO

FOLHA Nº
06/72

DATA INICIAL	ESCALA	REVISÃO	ARQUIVO
31/01/2023	INDICADA	R01	DAC-PMPA-UPA-PE-EST-R02.DWG