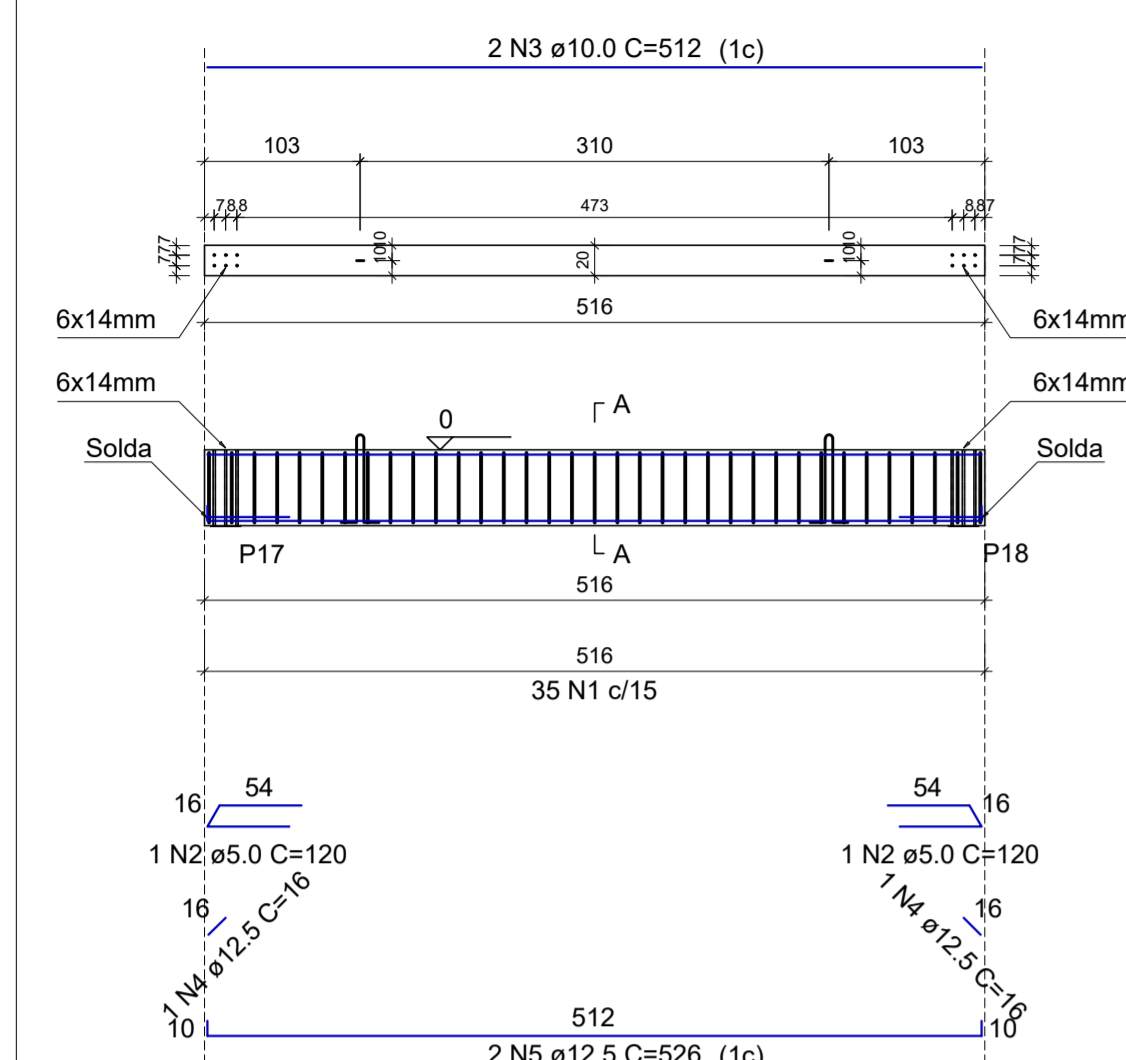
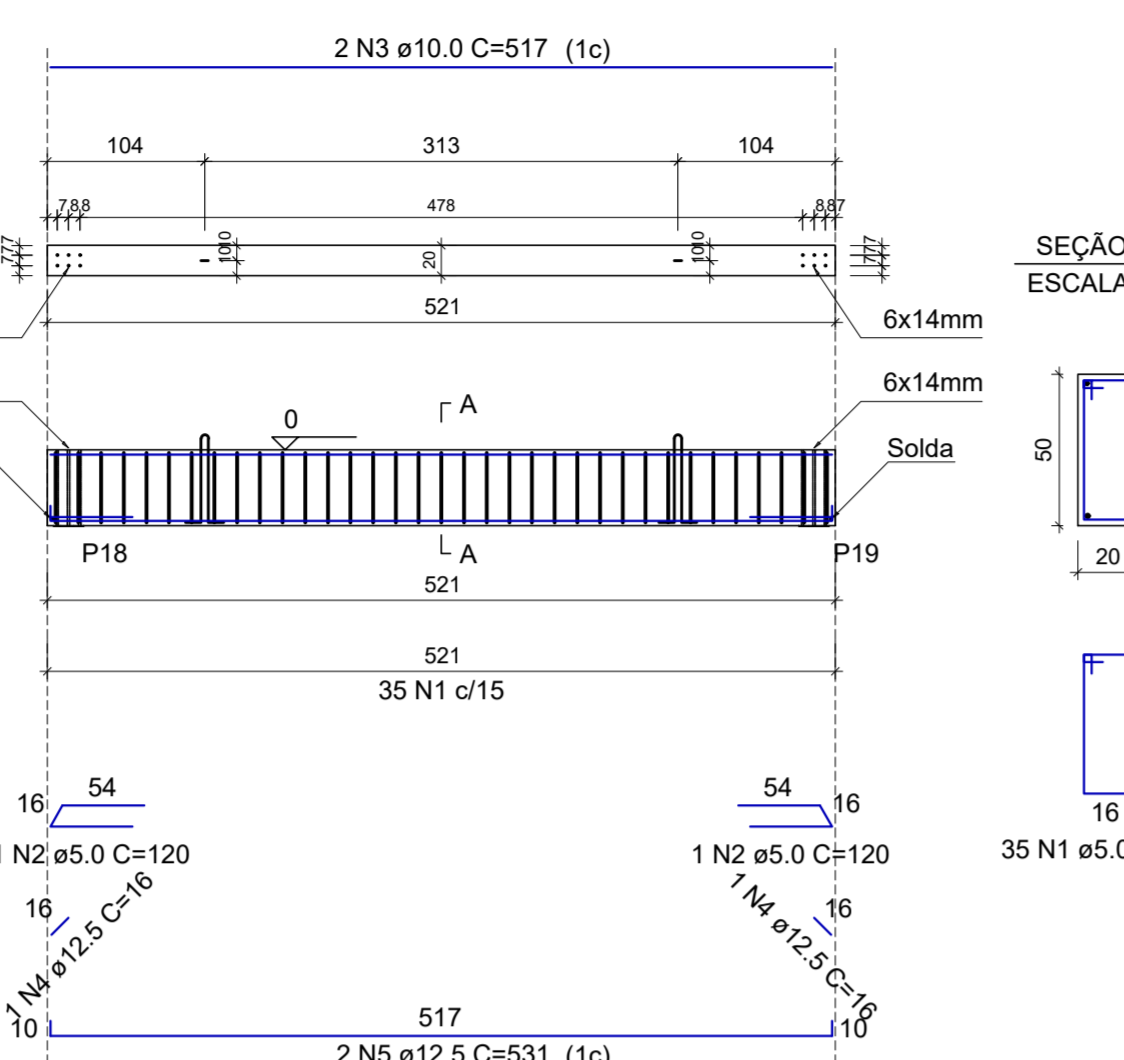


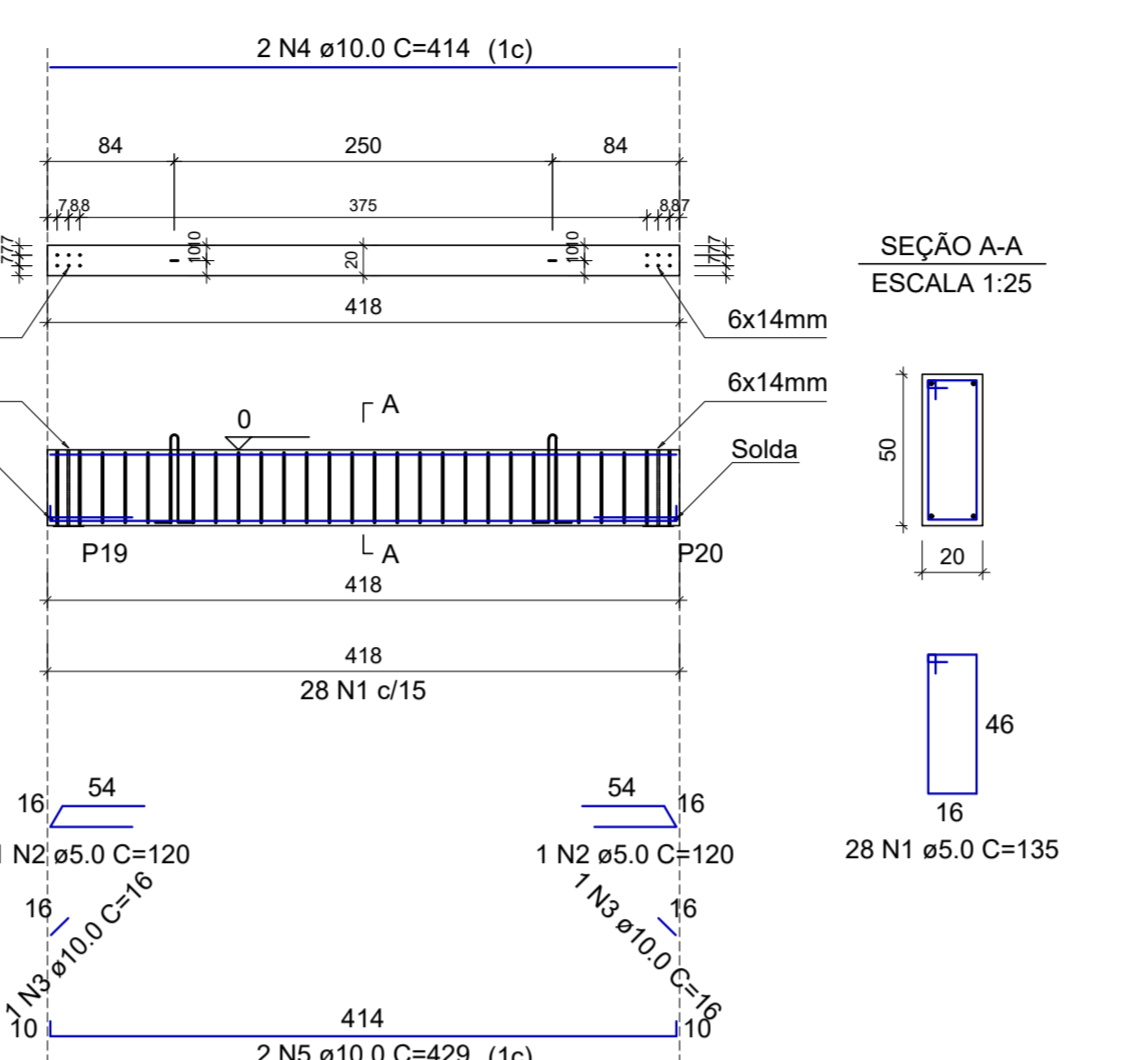
VT18
ESCALA 1:50



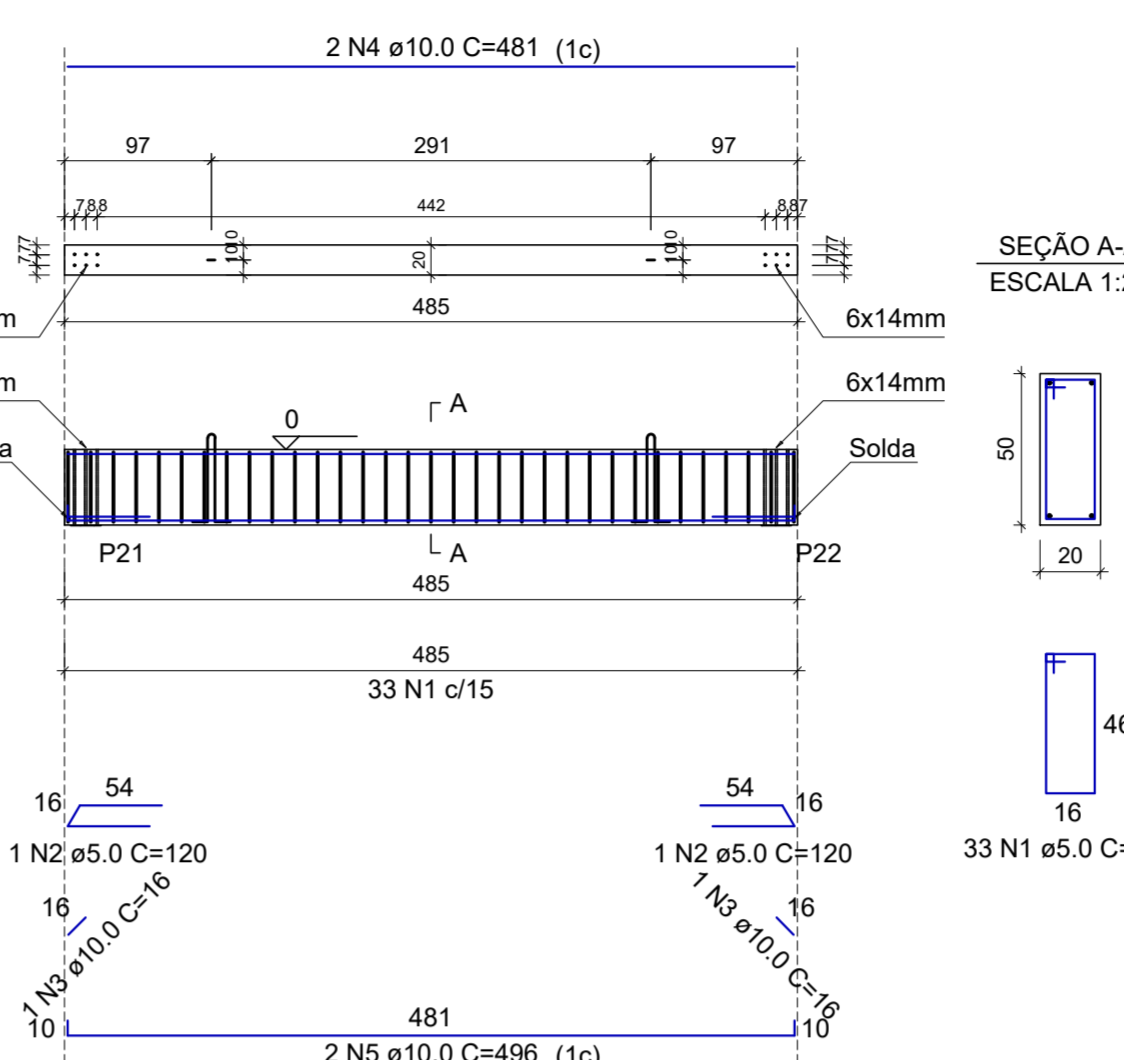
VT19
ESCALA 1:50



VT20
ESCALA 1:50



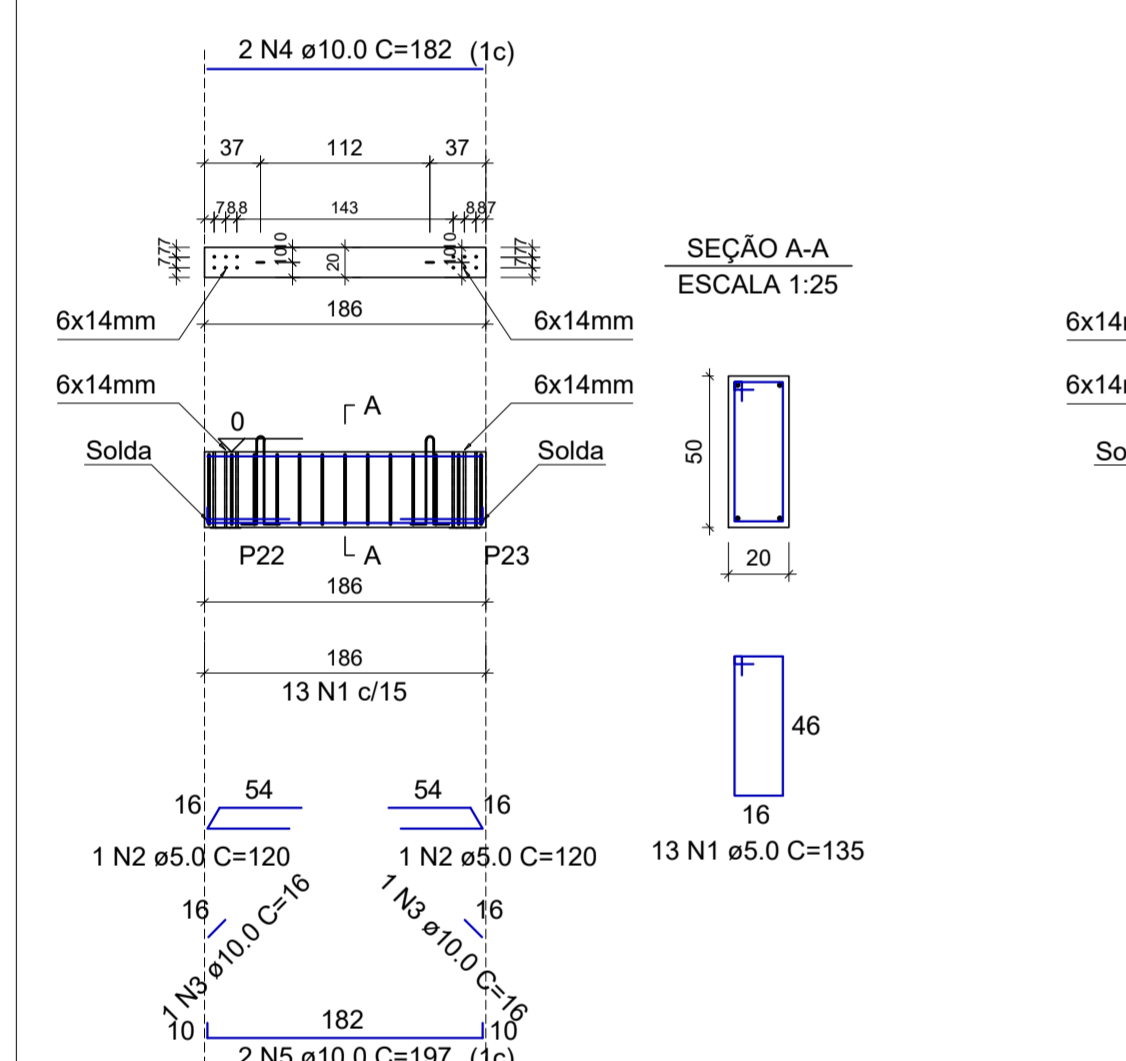
VT21
ESCALA 1:50



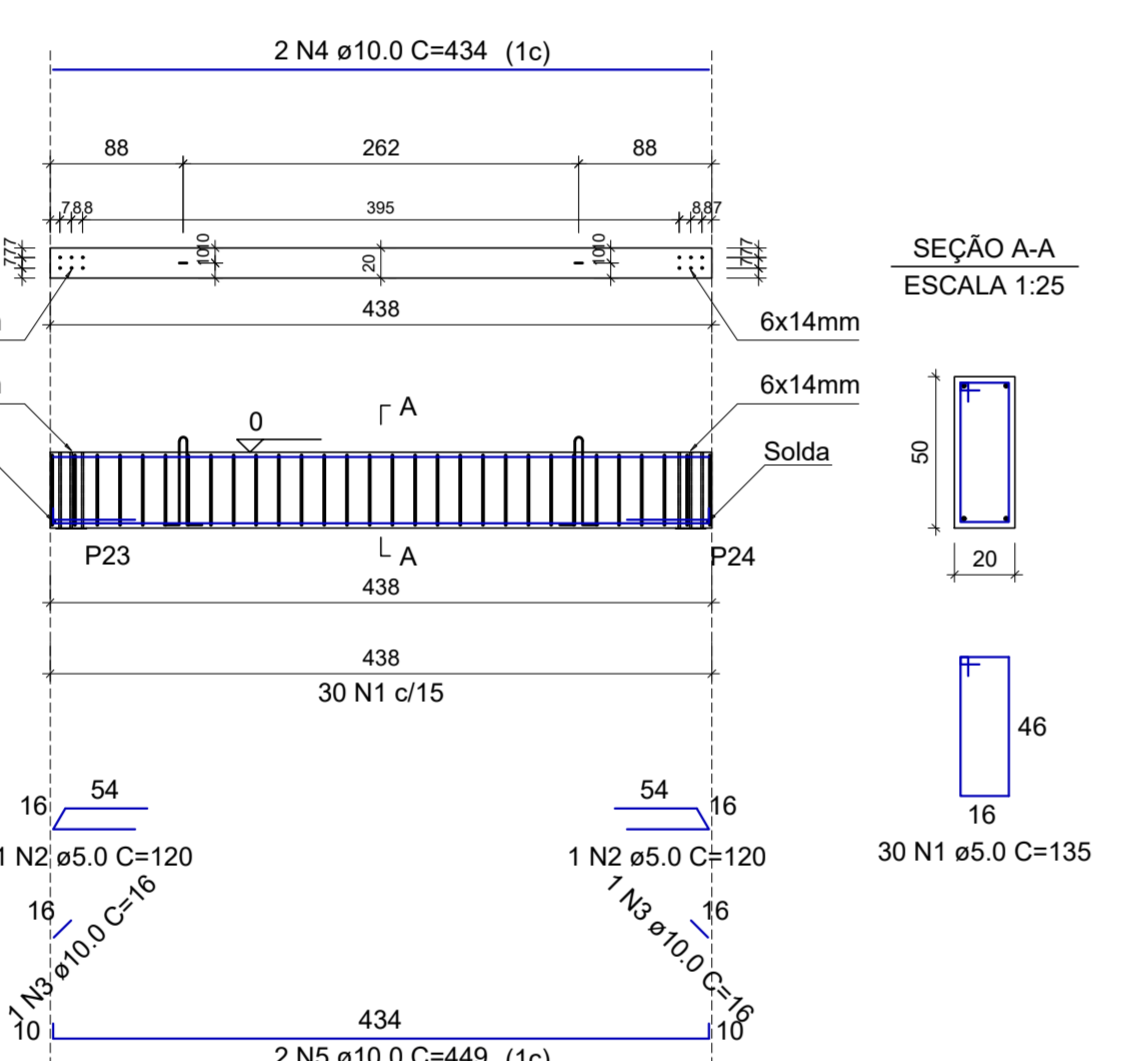
Relação das alças de içamento				
Qtde.	Aço	ø (mm)	C. Anc. (cm)	C. Unit. (cm)
14x2	ASTM A36	10	48	138

ELEMENTO	AÇO	N	DIAM (mm)	QUANT	C.UNIT (cm)	C.TOTAL (cm)
VT18	CA60	1	5.0	35	135	4725
	CA60	2	5.0	2	120	240
	CA50	3	10.0	2	512	1024
	CA50	4	12.5	2	16	32
VT19	CA50	5	12.5	2	526	1052
	CA60	1	5.0	35	135	4725
	CA60	2	5.0	2	120	240
	CA50	3	10.0	2	517	1034
VT20	CA50	4	12.5	2	16	32
	CA50	5	12.5	2	531	1062
	CA60	1	5.0	28	135	3780
	CA60	2	5.0	2	120	240
VT21	CA50	3	10.0	2	16	32
	CA50	4	10.0	2	414	828
	CA50	5	10.0	2	429	858
	CA60	1	5.0	33	135	4455
VT22	CA60	2	5.0	2	120	240
	CA50	3	10.0	2	16	32
	CA50	4	10.0	2	197	394
	CA50	5	10.0	30	135	4050
VT23	CA60	2	5.0	2	120	240
	CA50	3	10.0	2	16	32
	CA50	4	10.0	2	188	376
	CA50	5	10.0	2	203	406
VT26	CA60	1	5.0	16	135	2160
	CA60	2	5.0	2	120	240
	CA50	3	10.0	2	16	32
	CA50	4	10.0	2	230	460
VT29	CA60	1	5.0	16	135	2160
	CA60	2	5.0	2	120	240
	CA50	3	10.0	2	16	32
	CA50	4	10.0	2	245	490
VT30	CA60	1	5.0	15	135	2025
	CA60	2	5.0	2	120	240
	CA50	3	10.0	2	16	32
	CA50	4	10.0	2	213	426
VT31	CA50	5	10.0	2	228	456
	CA60	1	5.0	13	135	1755
	CA60	2	5.0	2	120	240
	CA50	3	10.0	2	16	32
VT32	CA50	4	10.0	2	182	364
	CA50	5	10.0	2	197	394
	CA60	1	5.0	30	135	4050
	CA60	2	5.0	2	120	240
VT33	CA50	3	10.0	2	16	32
	CA50	4	10.0	2	198	396
	CA50	5	10.0	2	213	426
	CA60	1	5.0	35	135	4725
VT34	CA60	2	5.0	2	120	240
	CA50	3	10.0	2	16	32
	CA50	4	12.5	2	16	32
	CA50	5	12.5	2	1052	2104
VT35	CA60	1	5.0	35	135	4725
	CA60	2	5.0	2	120	240
	CA50	3	10.0	2	517	1034
	CA50	4	12.5	2	16	32
VT35	CA50	5	12.5	2	531	1062

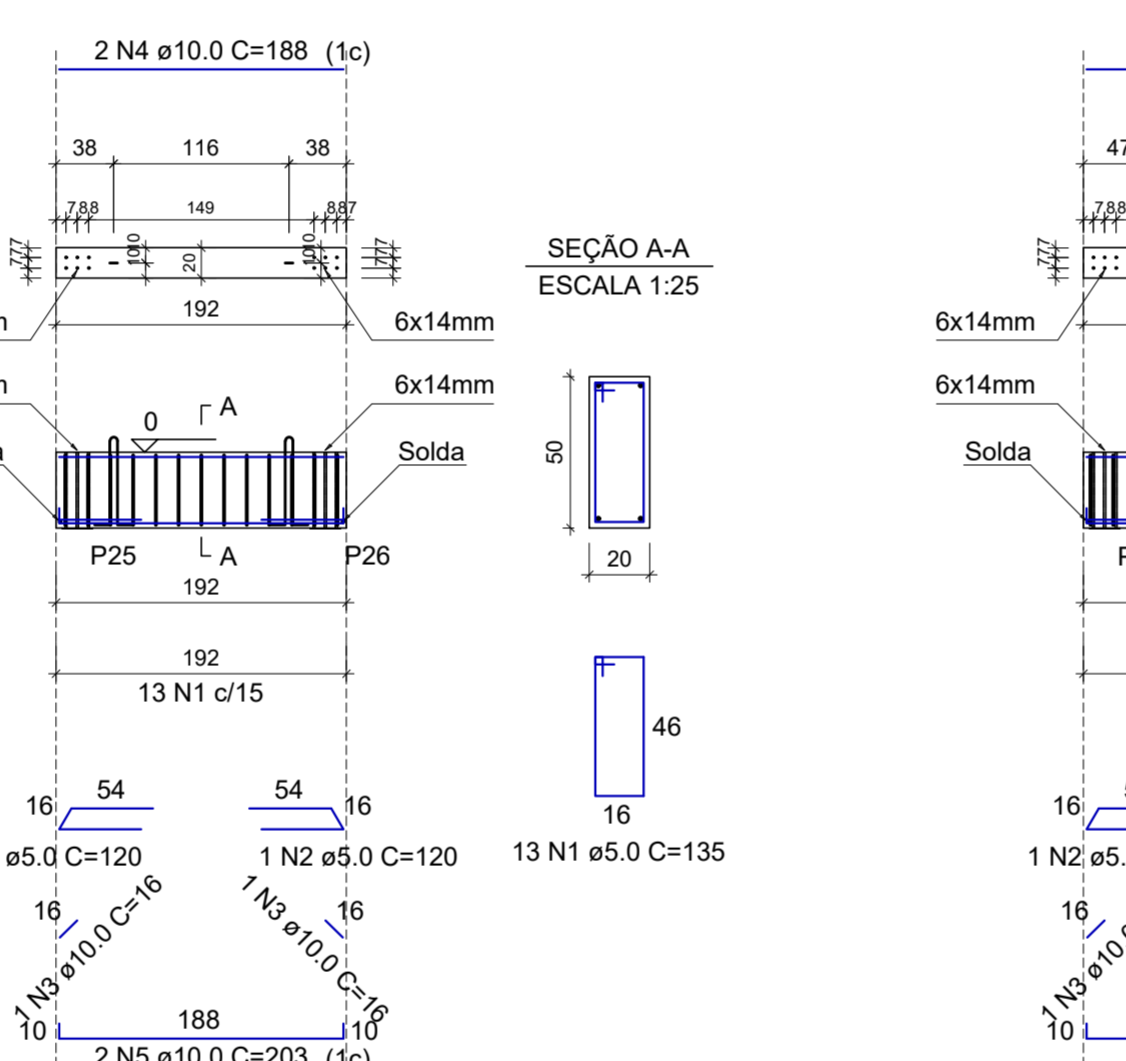
VT22
ESCALA 1:50



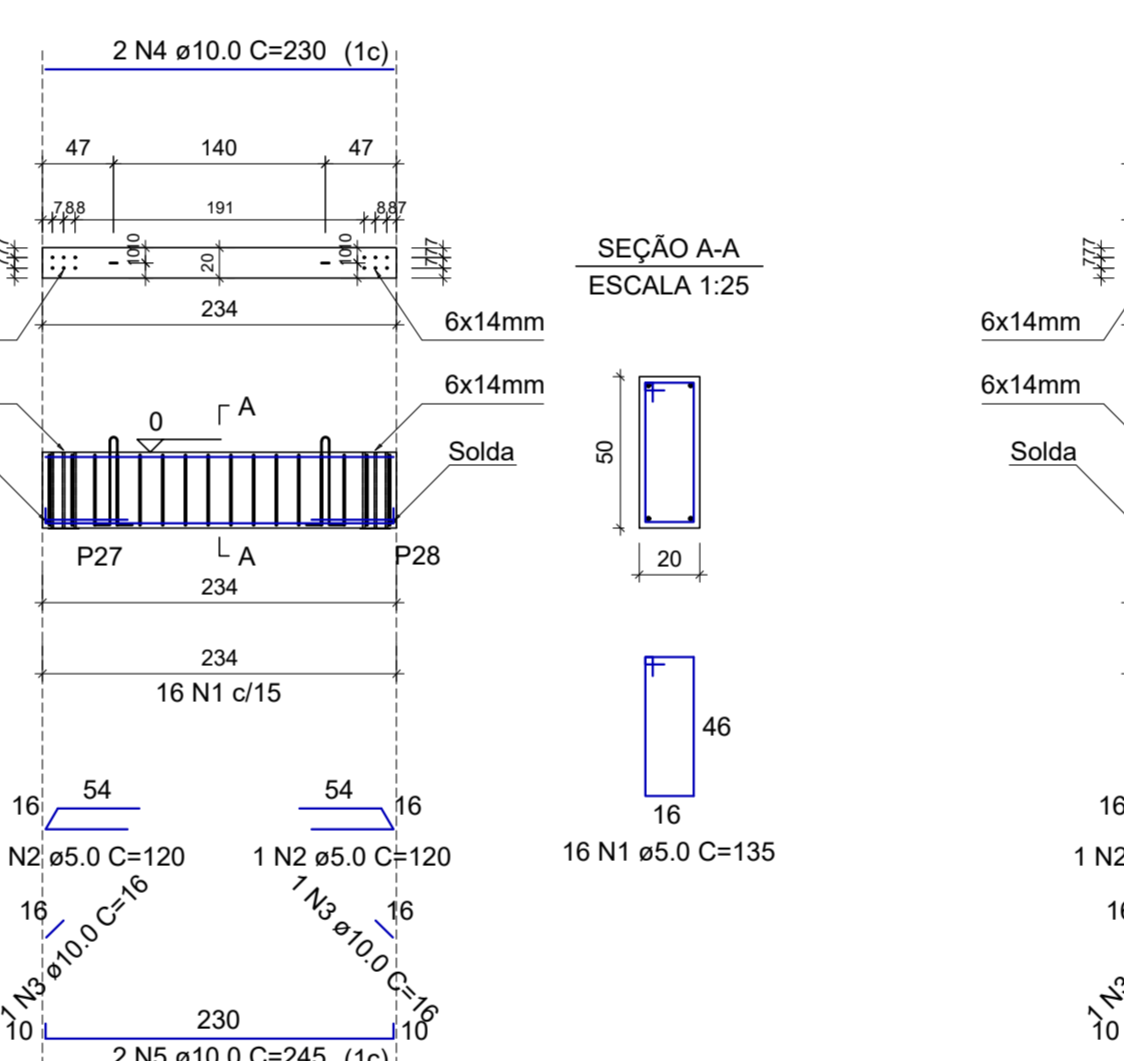
VT23
ESCALA 1:50



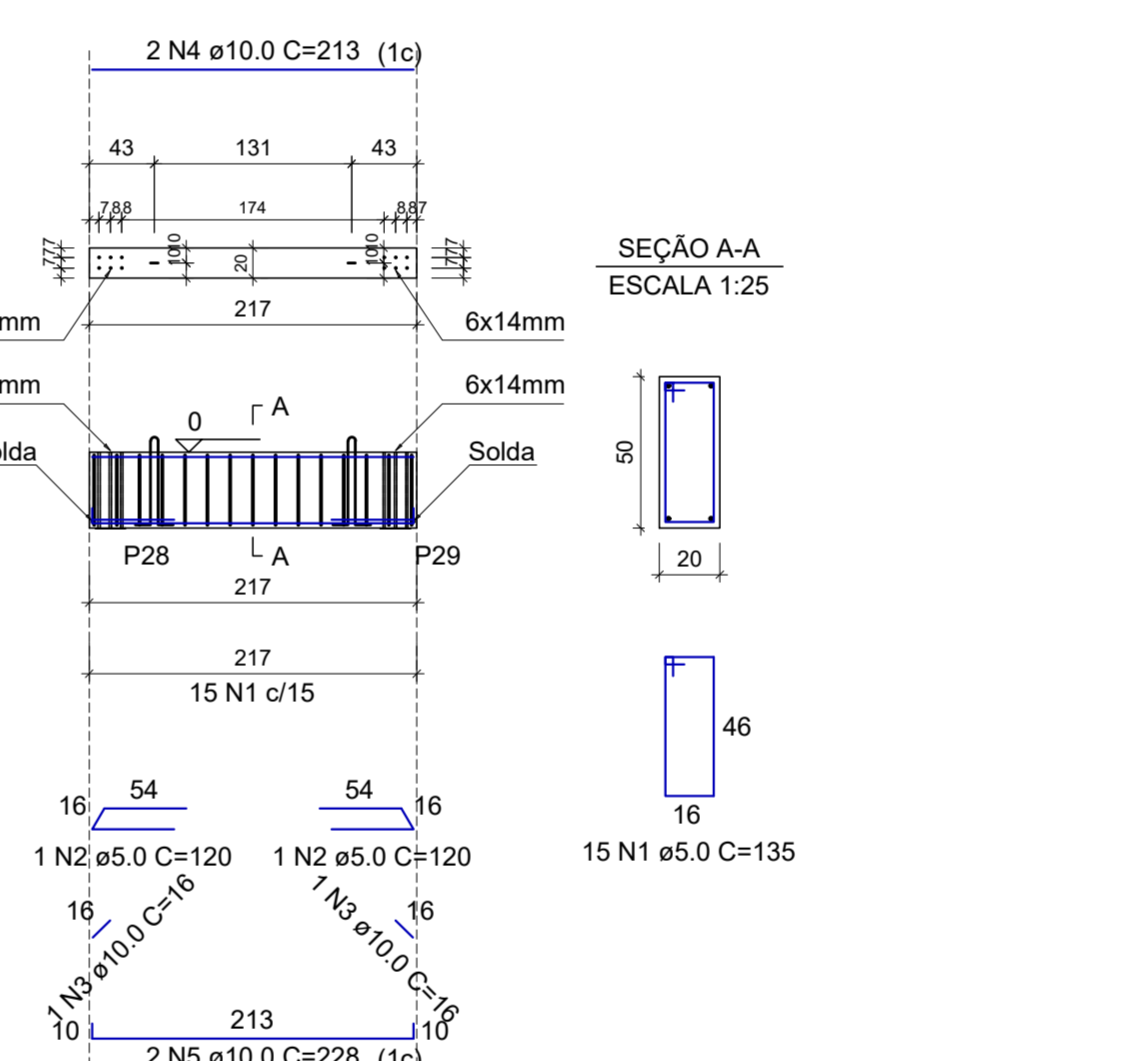
VT26
ESCALA 1:50



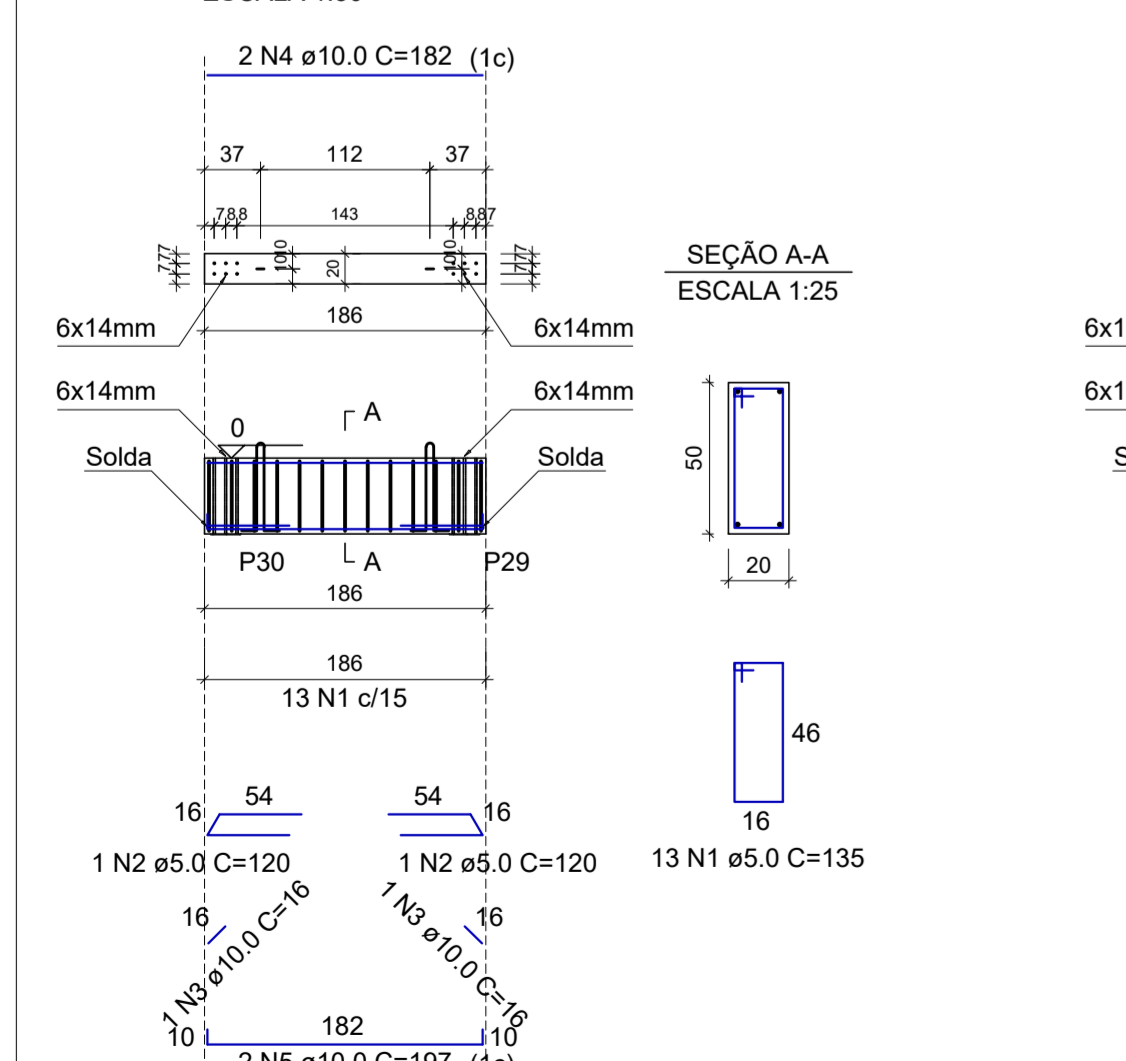
VT29
ESCALA 1:50



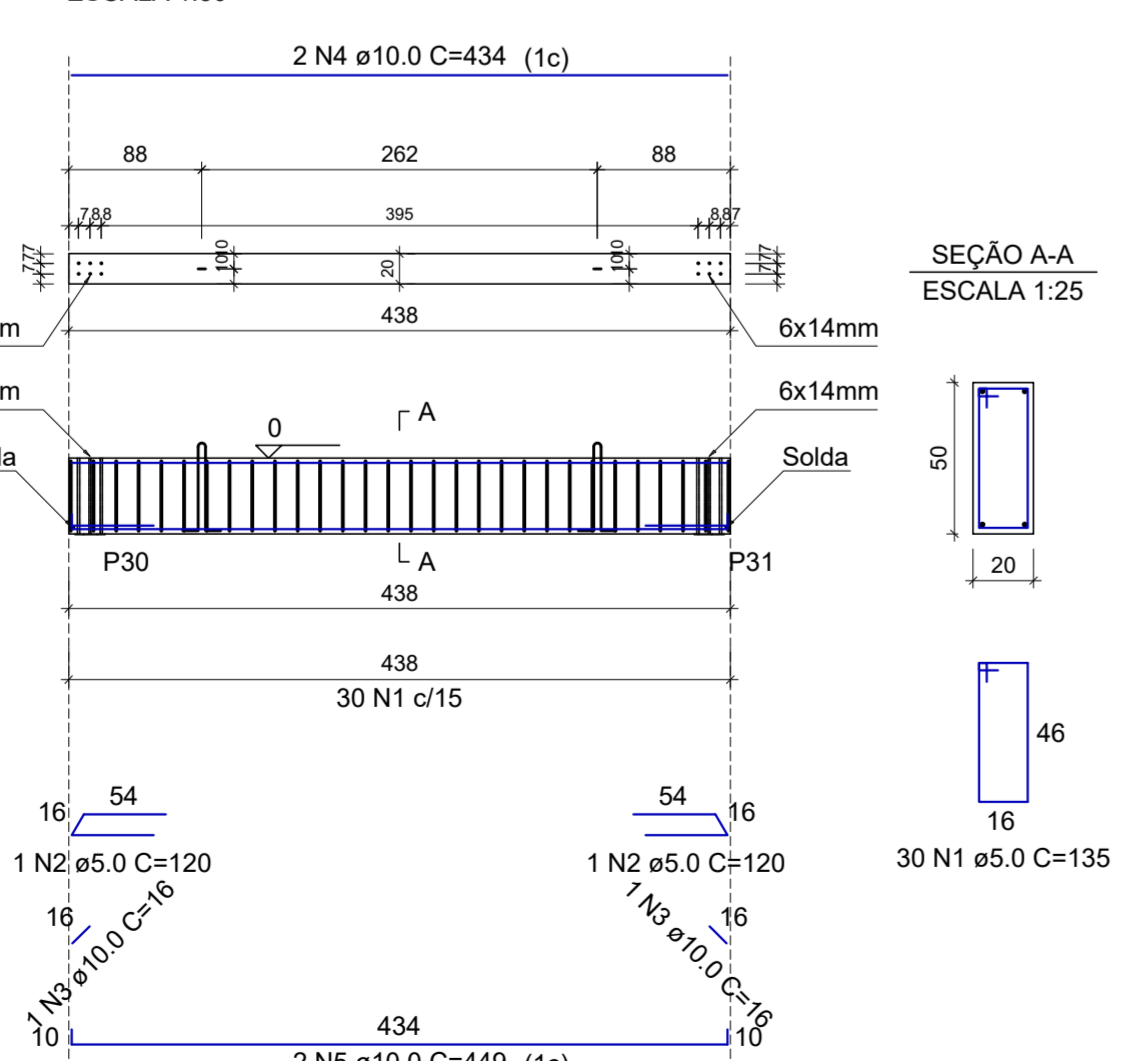
VT30
ESCALA 1:50



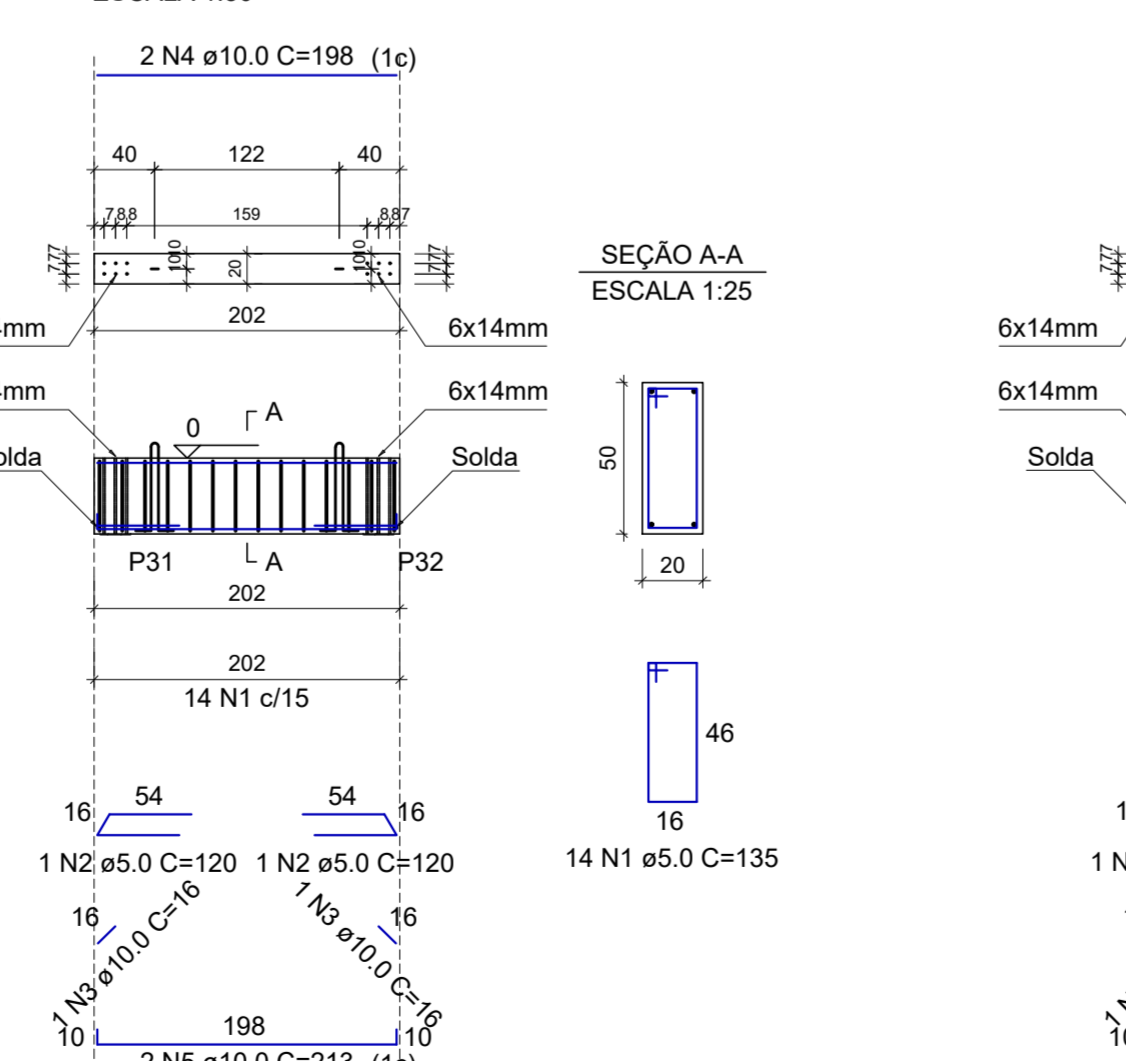
VT31
ESCALA 1:50



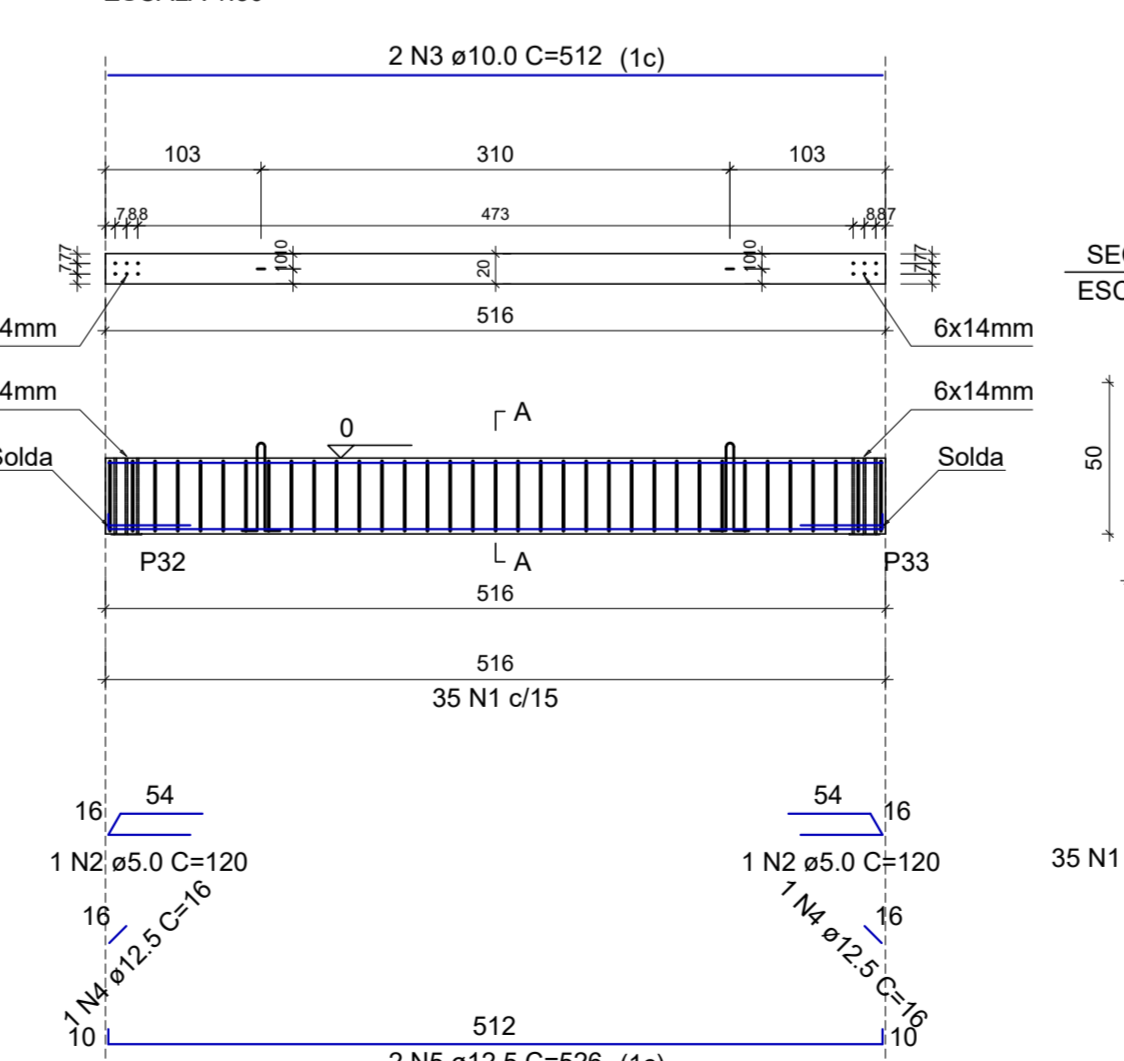
VT32
ESCALA 1:50



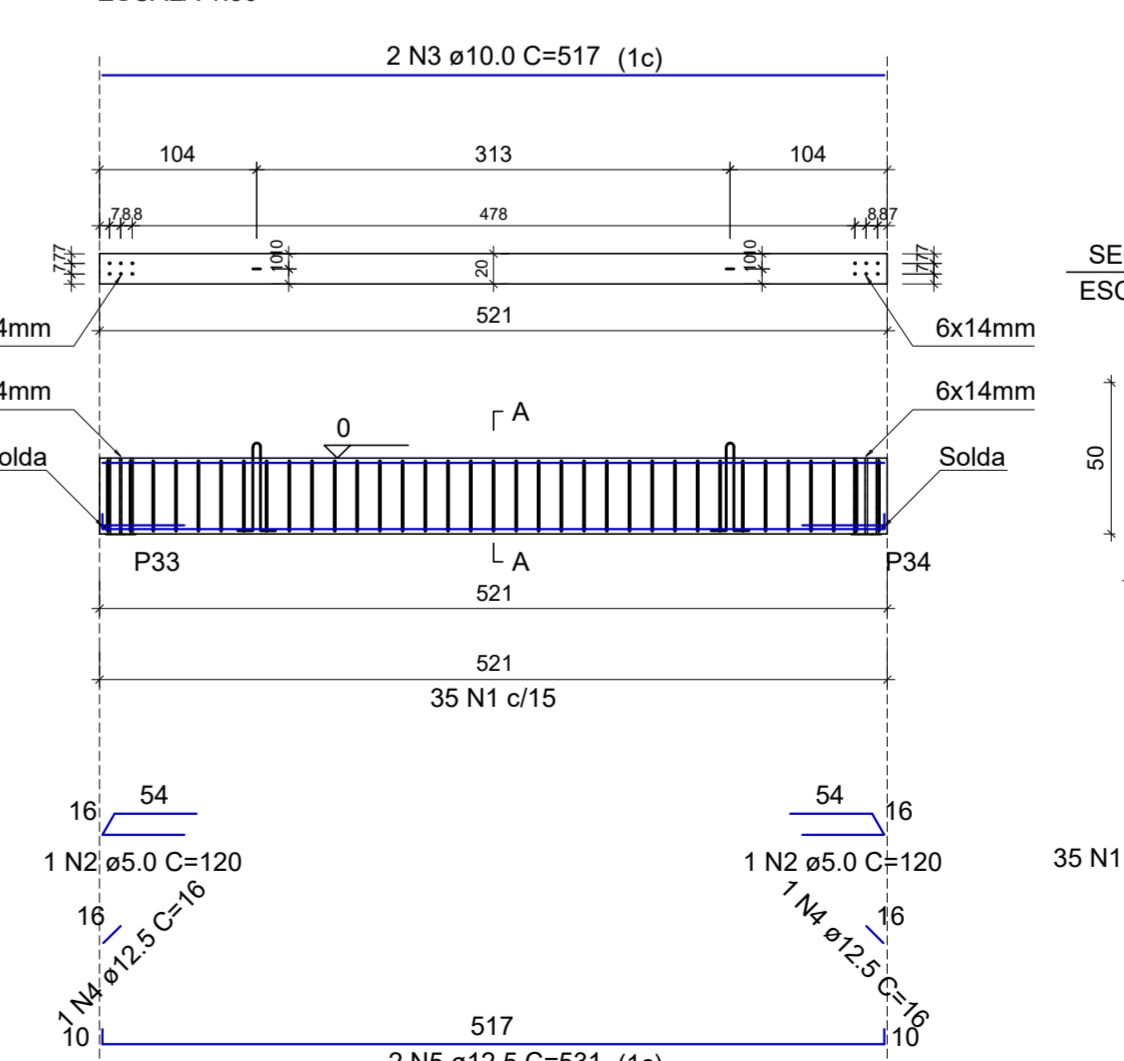
VT33
ESCALA 1:50



VT34
ESCALA 1:50



VT35
ESCALA 1:50



RESUMO DO AÇO

AÇO	DIAM (mm)	C.TOTAL (m)	PESO + 10% (kg)
CA50	10.0	165.6	112.3
CA60	12.5	43.6	46.2
CA60	5.0	499.4	84.7
PESO TOTAL (kg)			
CA50		158.5	
CA60		84.7	

Volume de concreto (C-30) = 5.07 m³
Área de forma = 0.00 m²

REV. 01	28/04/23	CONFORME SOLICITAÇÕES DA VIGILÂNCIA SANITÁRIA	DAC
REV. 00	31/01/23	EMISSÃO INICIAL	DAC
REVISÃO	DATA	DESCRIÇÃO	RESP.:



DAC
engenharia
Rua Miguel Vianna, nº 81, 2º Andar
Bairro Morro Chic
CEP: 37520-080 - Itajubá / MG
Tel: (35) 3623-8646
www.dacengenharia.com.br

EMPRESAMENTO
CONSTRUÇÃO DO CENTRO DE ATENÇÃO PSICOSSOCIAL

INGENHEIRO
RUA PIRANGUINHO, B. SÃO JOÃO
POUSO ALEGRE - MINAS GERAIS

ASSUNTO
PROJETO ESTRUTURAL
DETALHAMENTO DAS ARMADURAS
VIGAS PM

COORDENAÇÃO
ALOSIO CAETANO FERRERA

RESPONSÁVEL TÉCNICO E AUTOR
ENG. CIVIL FLÁVIA BARBOSA CREA MG-18734/0

DISCIPLINA
ESTRUTURAL

FASE DO PROJETO
EXECUTIVO

FOLHA Nº
08/41

DATA INICIAL
31/01/2023

ESCALA
INDICADA

REVISÃO
R01

ARQUIVO
DAC-PMPA-CAPS-PE-EST-R01.DWG