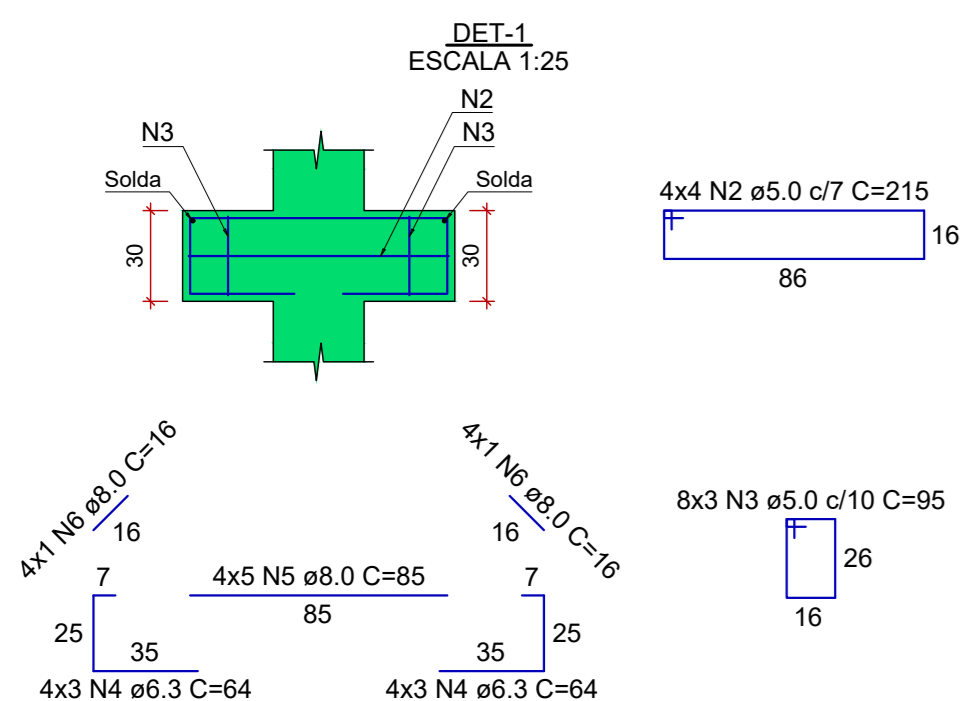
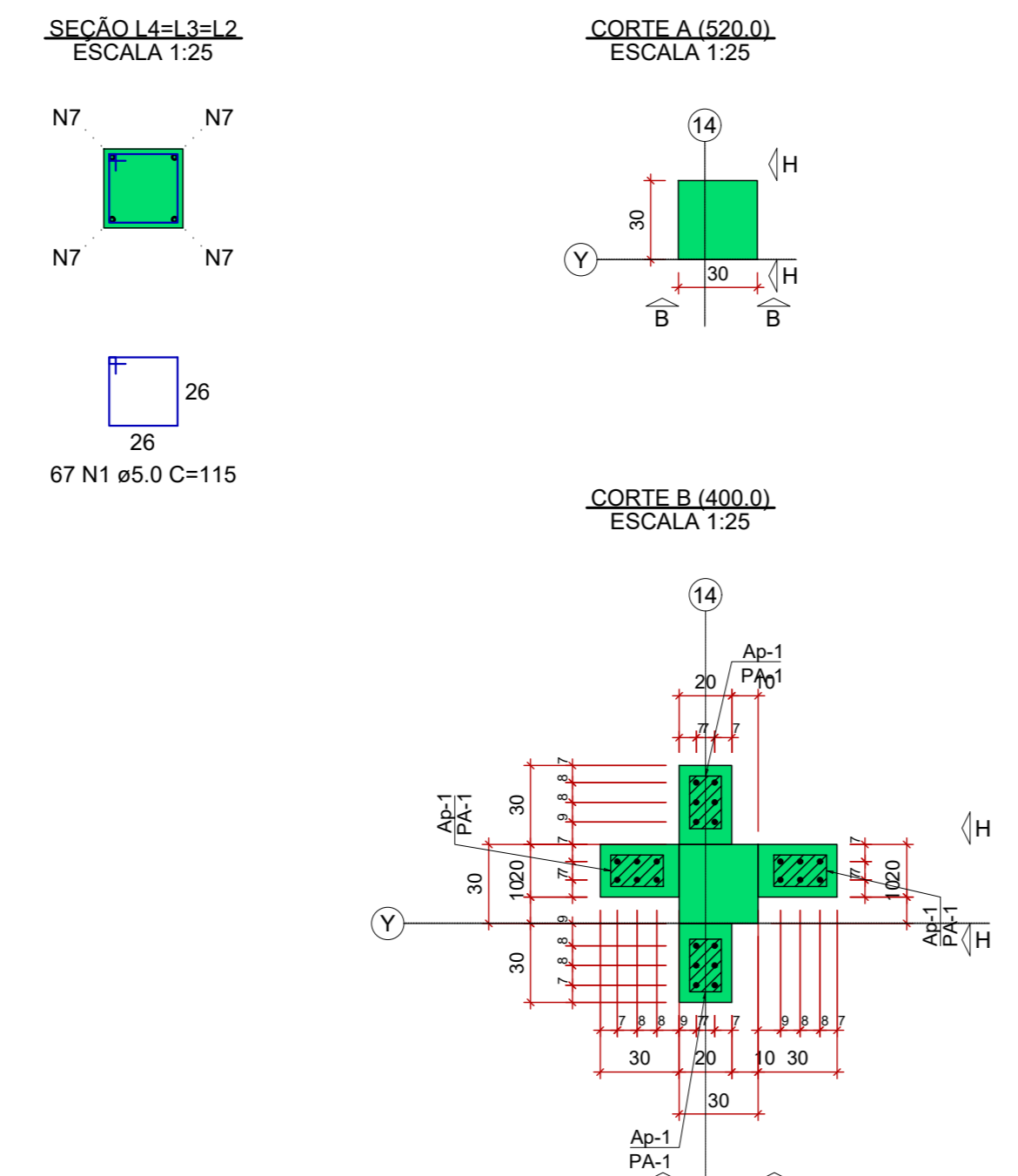
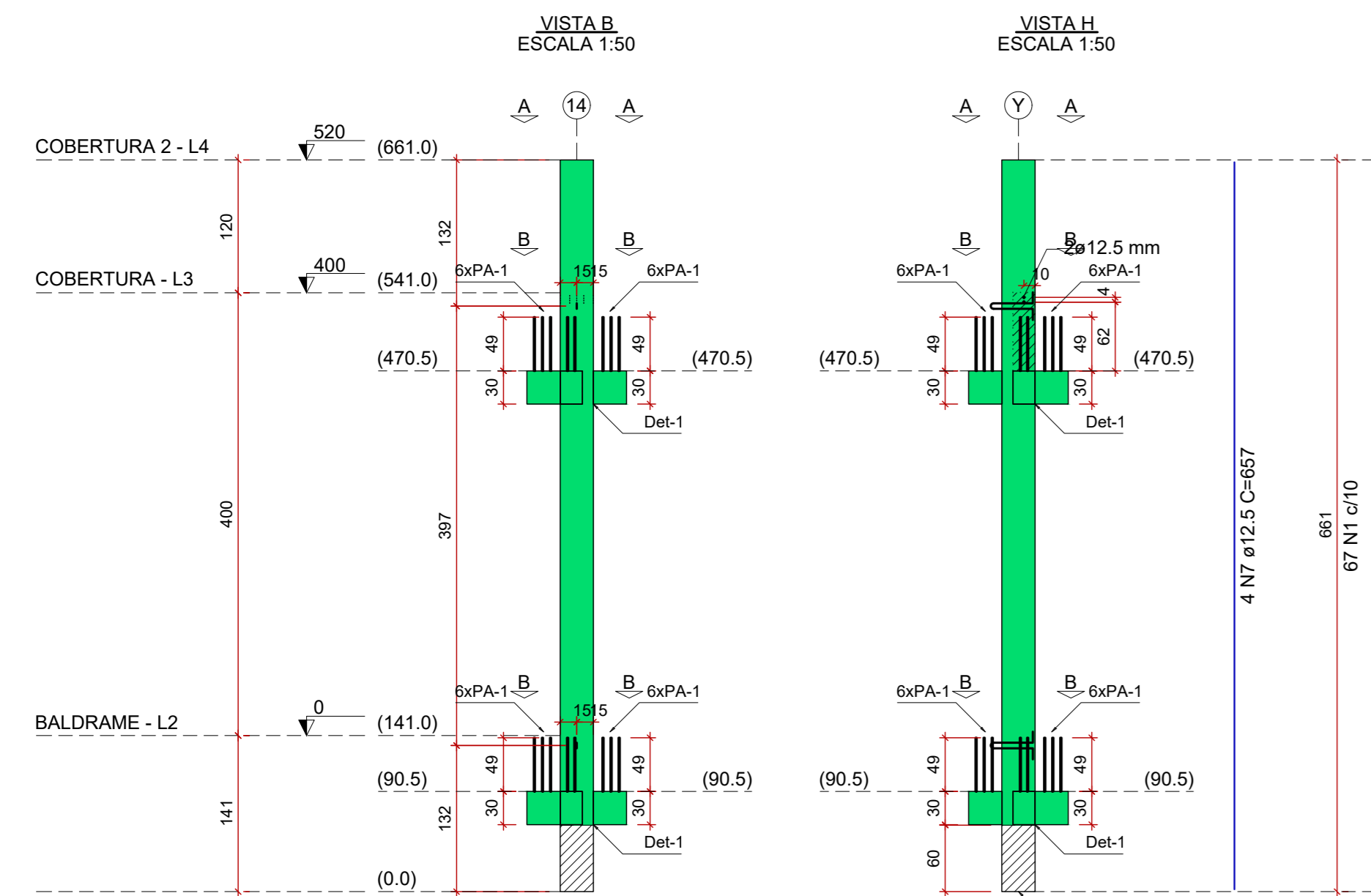
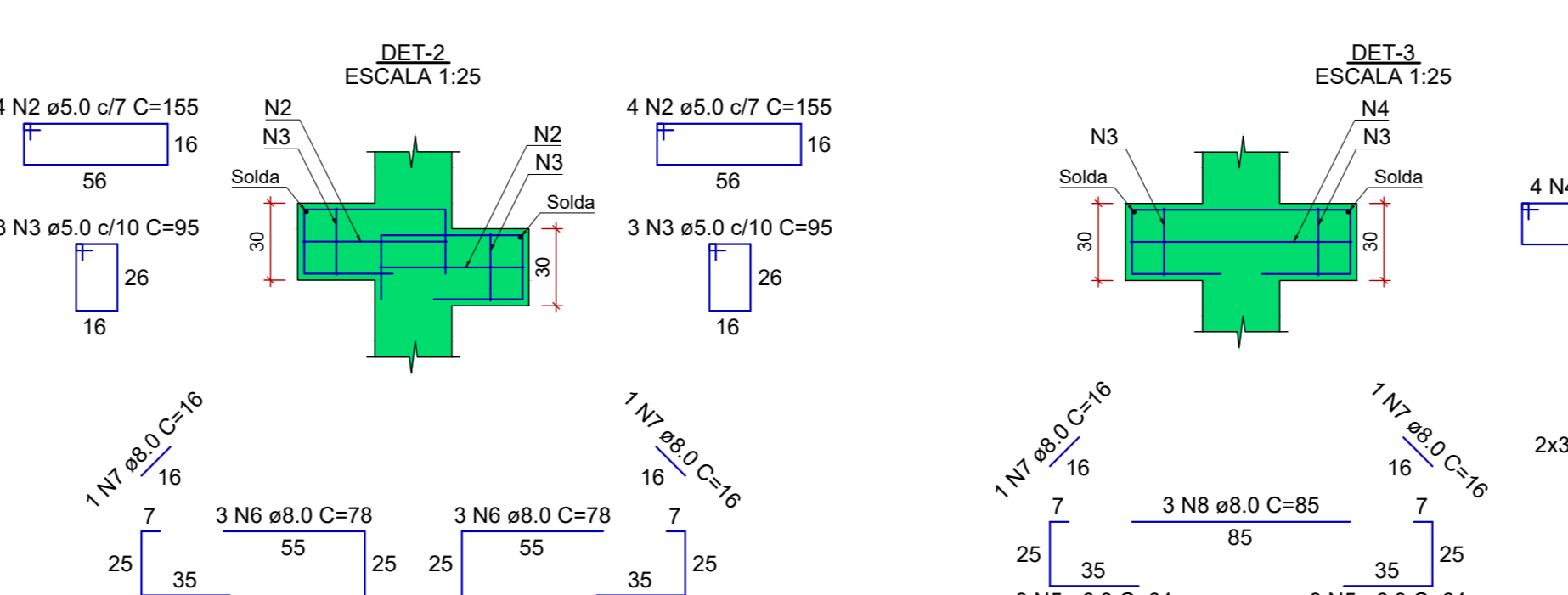
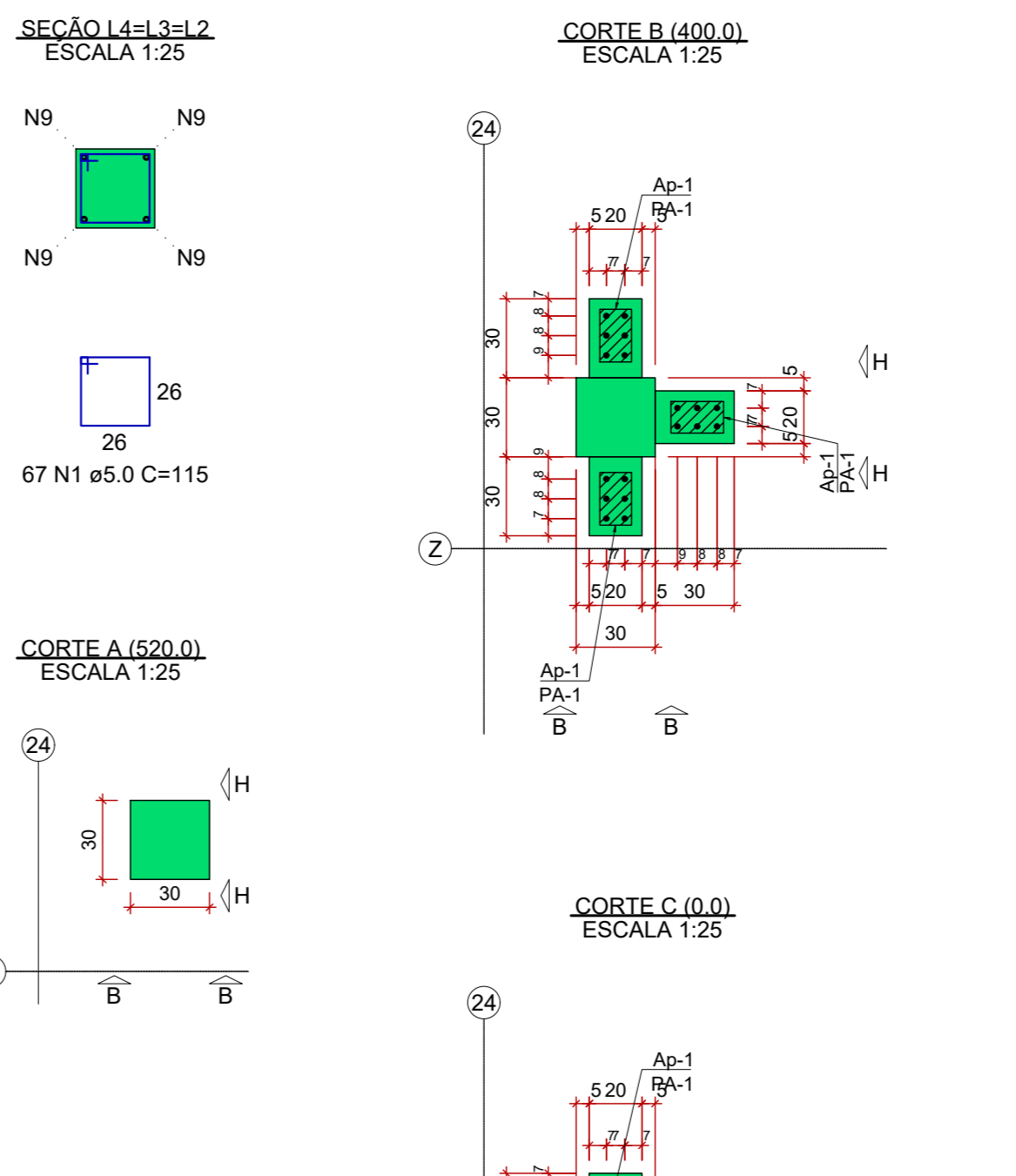
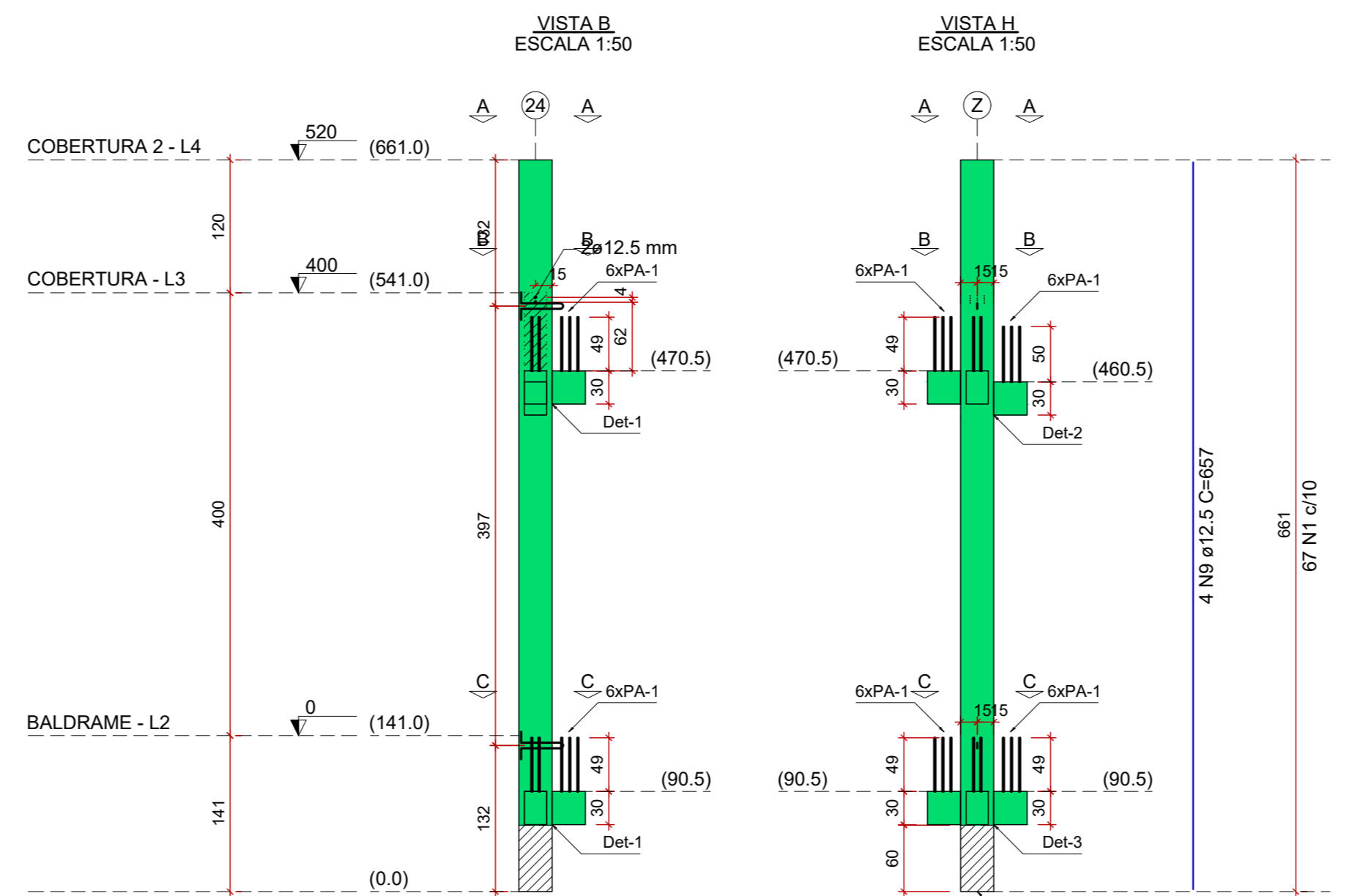


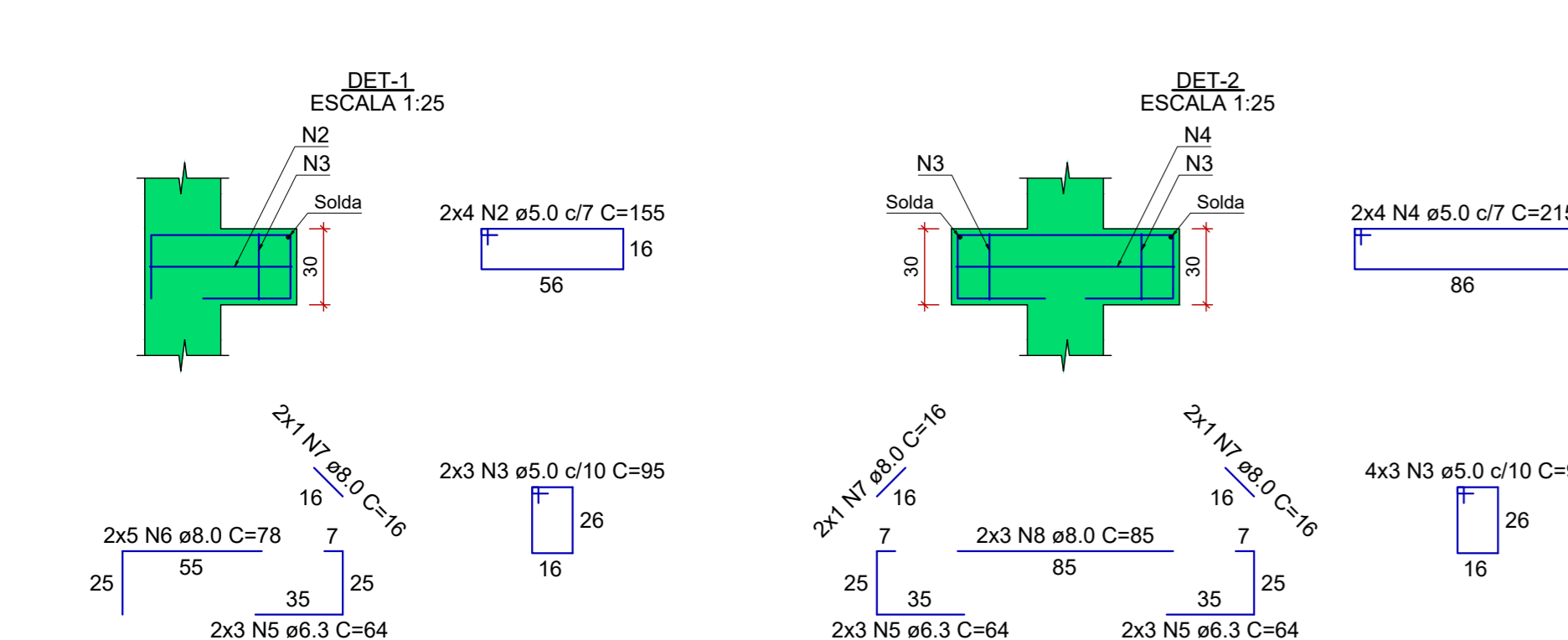
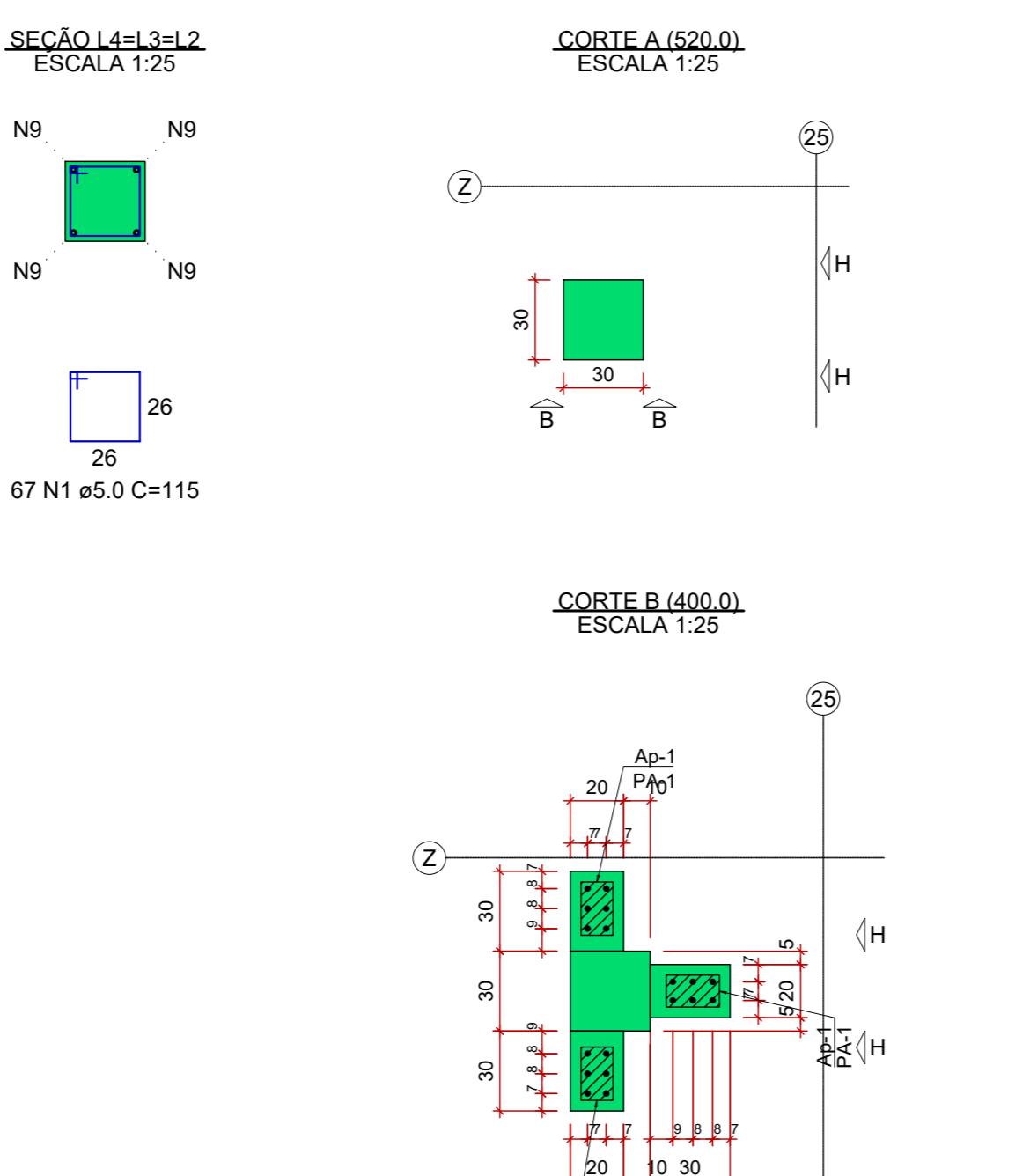
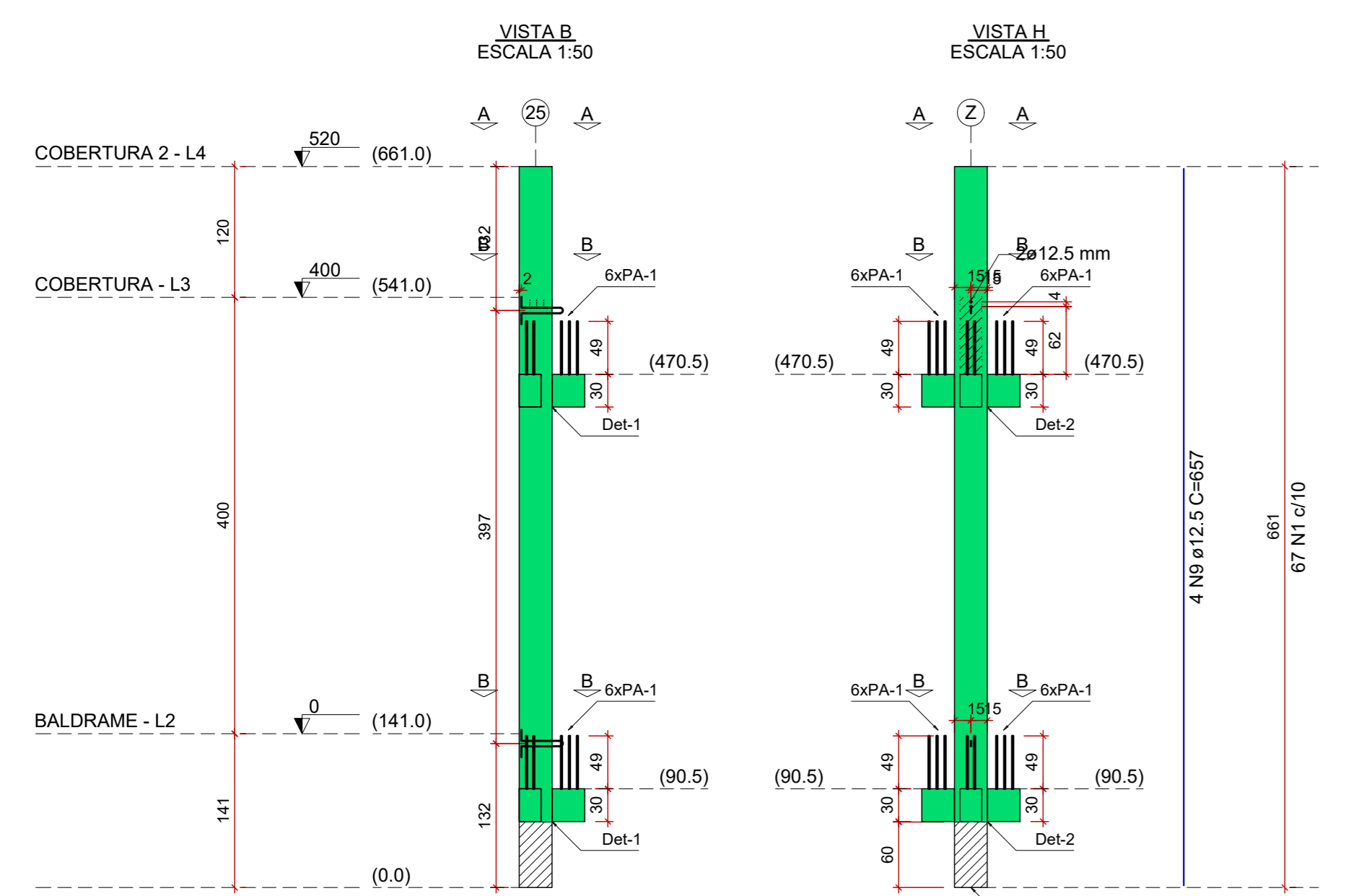
PM97



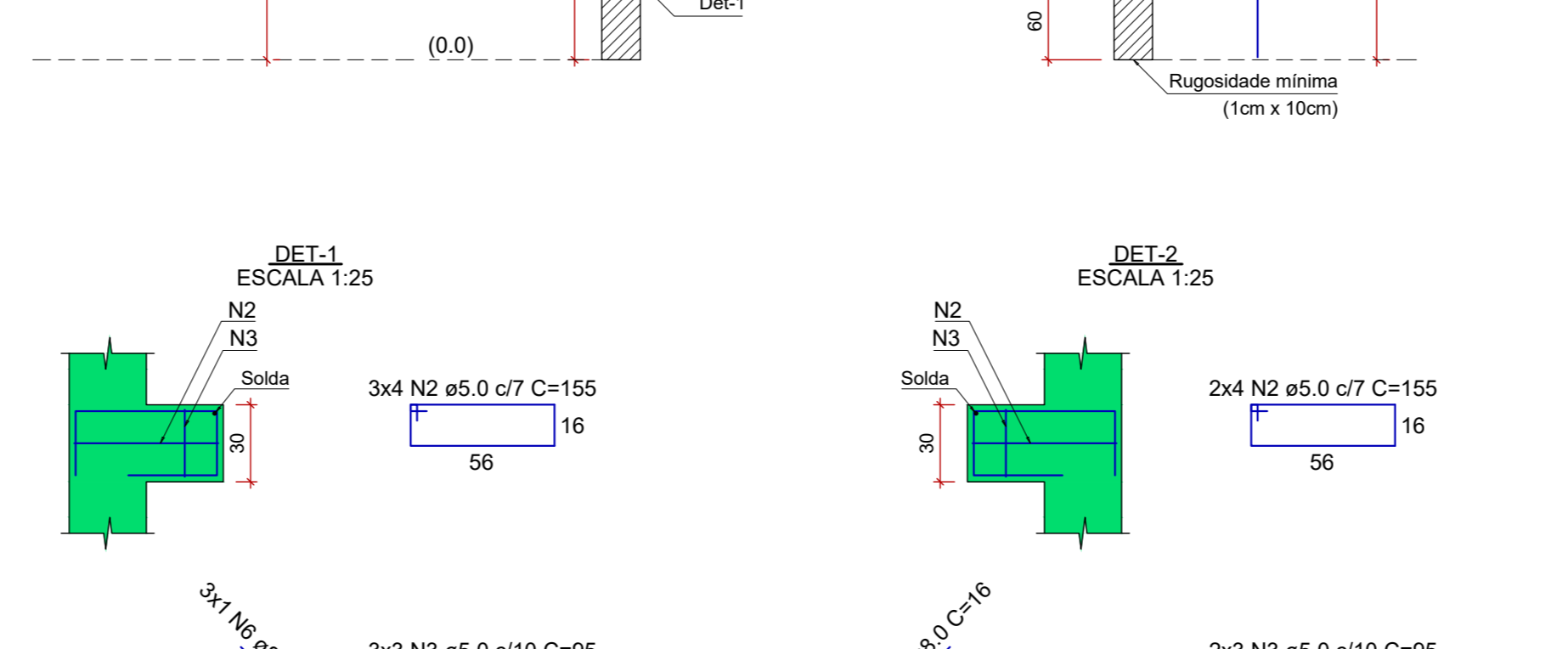
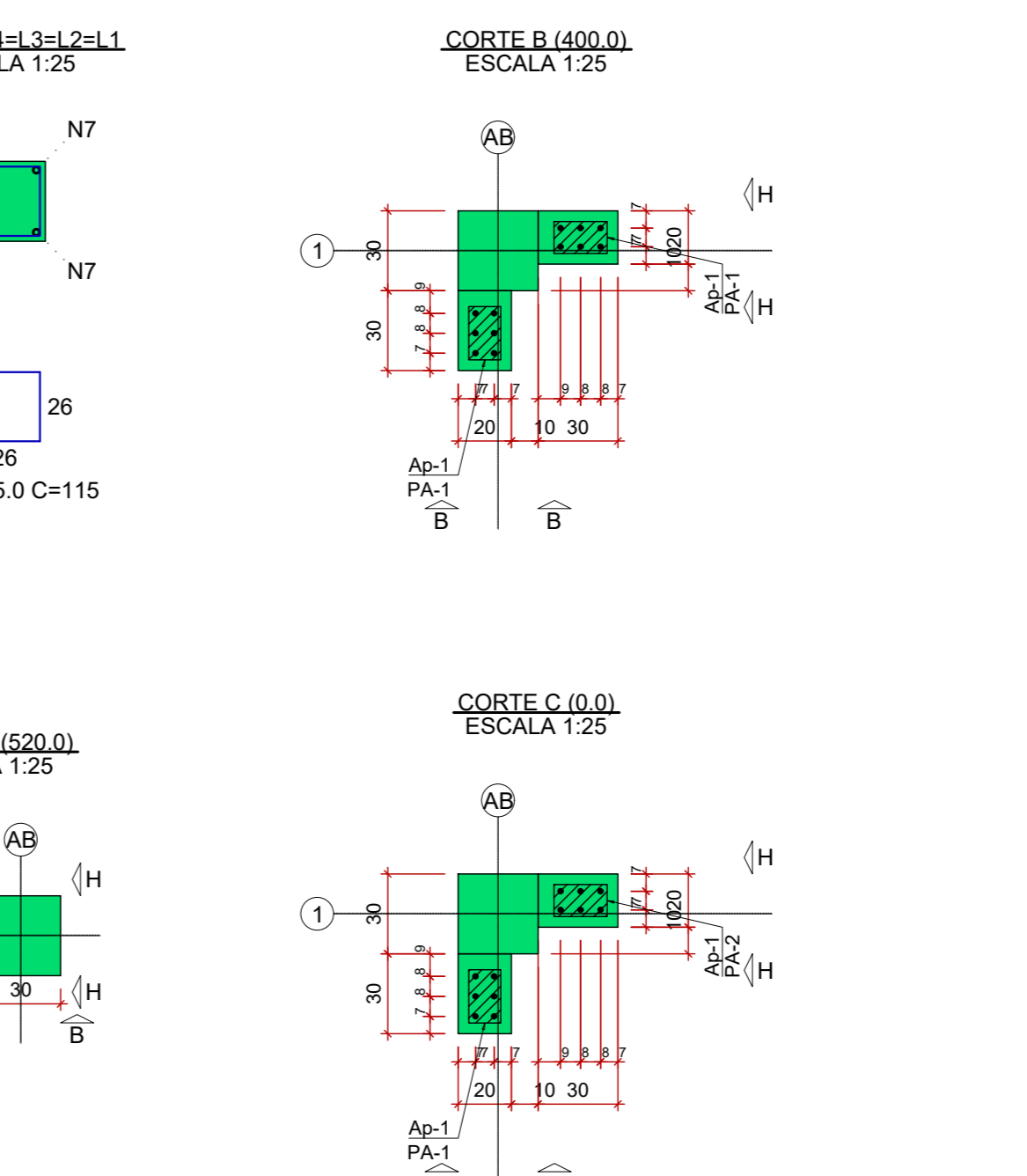
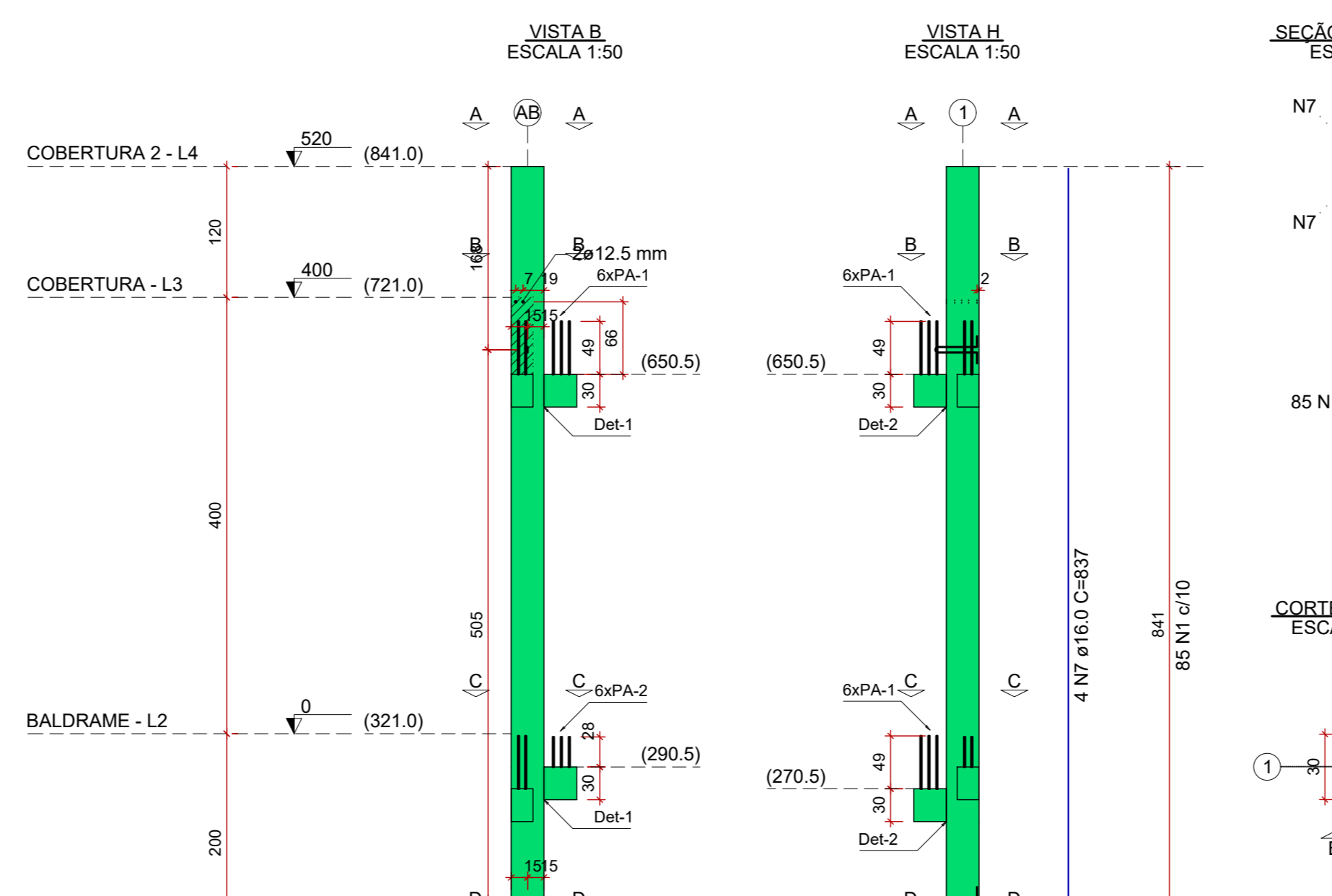
PM102



PM103



PM104



Nome	Quantidade	Dimensões			Dureza
		B (cm)	H (cm)	E (cm)	
Ap-1	25	12	20	0.5	70 Shore A

Nome	Quantidade	Aço	φ (mm)	Comp. (cm)
PA-1	138	CA25	10	77
PA-2	12	CA25	10	56

Qtde	Aço	φ (mm)	C. Anc. (cm)	C. Unit. (cm)
8	ASTM A36	10	28	99

RELAÇÃO DO AÇO

ELEMENTO	AÇO	N	DIAM (mm)	QUANT	C.UNIT (cm)	C.TOTAL (cm)
PM97	CA60	1	5.0	67	115	7705
	CA60	2	5.0	16	215	3440
	CA60	3	5.0	24	95	2280
	CA50	4	6.3	24	64	1536
	CA50	5	8.0	20	85	1700
CA50	6	8.0	8	16	128	
CA50	7	12.5	4	657	2628	

RESUMO DO AÇO

AÇO	DIAM (mm)	C.TOTAL (m)	PESO + 10% (kg)
CA50	6.3	15.4	4.1
	8.0	18.3	7.9
	12.5	26.3	64
CA60	5.0	134.3	22.8

PESO TOTAL (kg) 39.9
CA50 39.9
CA60 22.8

Volume de concreto (C-30) = 0.74 m³

RELAÇÃO DO AÇO

ELEMENTO	AÇO	N	DIAM (mm)	QUANT	C.UNIT (cm)	C.TOTAL (cm)
PM102	CA60	1	5.0	67	115	7705
	CA60	2	5.0	16	155	2480
	CA60	3	5.0	16	95	1710
	CA60	4	5.0	4	215	860
	CA50	5	6.3	18	64	1152
	CA50	6	8.0	16	78	1248
	CA50	7	8.0	6	16	96
	CA50	8	8.0	1	85	255
	CA50	9	12.5	4	657	2628

RESUMO DO AÇO

AÇO	DIAM (mm)	C.TOTAL (m)	PESO + 10% (kg)
CA50	6.3	11.5	3.1
	8.0	13.9	6.9
	12.5	26.3	27.8
CA60	5.0	127.5	21.6

PESO TOTAL (kg) 37.9
CA50 37.9
CA60 21.6

Volume de concreto (C-30) = 0.71 m³

RELAÇÃO DO AÇO

ELEMENTO	AÇO	N	DIAM (mm)	QUANT	C.UNIT (cm)	C.TOTAL (cm)
PM103	CA60	1	5.0	67	115	7705
	CA60	2	5.0	6	155	1040
	CA60	3	5.0	18	95	1710
	CA60	4	5.0	3	215	1170
	CA50	5	6.3	18	64	1152
	CA50	6	8.0	16	78	1248
	CA50	7	8.0	6	16	96
	CA50	8	8.0	1	85	255
	CA50	9	12.5	4	657	2628

RESUMO DO AÇO

AÇO	DIAM (mm)	C.TOTAL (m)	PESO + 10% (kg)
CA50	6.3	11.5	3.1
	8.0	13.9	6.9
	12.5	26.3	27.8
CA60	5.0	123.8	21.1

PESO TOTAL (kg) 37
CA50 37
CA60 21

Volume de concreto (C-30) = 0.71 m³

RELAÇÃO DO AÇO

ELEMENTO	AÇO	N	DIAM (mm)	QUANT	C.UNIT (cm)	C.TOTAL (cm)
PM104	CA60	1	5.0	85	115	9775
	CA60	2	5.0	20	155	3100
	CA60	3	5.0	15	95	1425
	CA60	4	6.3	15	64	960
	CA50	5	6.3	5	15	1170
	CA50	6	8.0	5	16	80
	CA50	7	16.0	4	837	3348

RESUMO DO AÇO

AÇO	DIAM (mm)	C.TOTAL (m)	PESO + 10% (kg)
CA50	6.3	9.6	2.6
	8.0	12.5	5.4
	16.0	33.5	58.1
CA60	5.0	143	24.2

PESO TOTAL (kg) 66.1
CA50 66.1
CA60 24.2

Volume de concreto (C-30) = 0.85 m³

REV. 02	310703	CONFORME SOLICITAÇÕES DA VIGILANCIA SANITARIA	DAC
REV. 01	309403	CONFORME SOLICITAÇÕES DA VIGILANCIA SANITARIA	DAC
REV. 06	310103	EMISSÃO FINAL	DAC
REVISÃO	DATA	DESCRIÇÃO	RESP.
CLIENTE			
		COORDENAÇÃO ALDO GUERINO FERREIRA	
PROJETO 			
RESPONSÁVEL TÉCNICO E AUTOR ENG. CIVIL FLAVIO BARBOSA CREA MG 167/820			
REFERENCIONAMENTO CONSTRUÇÃO DA UNIDADE DE PRONTO ATENDIMENTO			
ENDEREÇO RUA MIRAGUANO, B. SÃO JOÃO POUSO ALEGRE - MINAS GERAIS			DISCIPLINA ESTRUTURAL
ASSUNTO PROJETO ESTRUTURAL DETALHAMENTO DAS ARMAÇÕES PILARES PM			FASE DO PROJETO EXECUTIVO
DATA INICIAL 31/01/2023			FOLHA Nº 70/72
ESCALA INDICADA		REVISÃO R01	ANEXO DAC-PM-PA-LP-PE-EST-RDZ.DWG