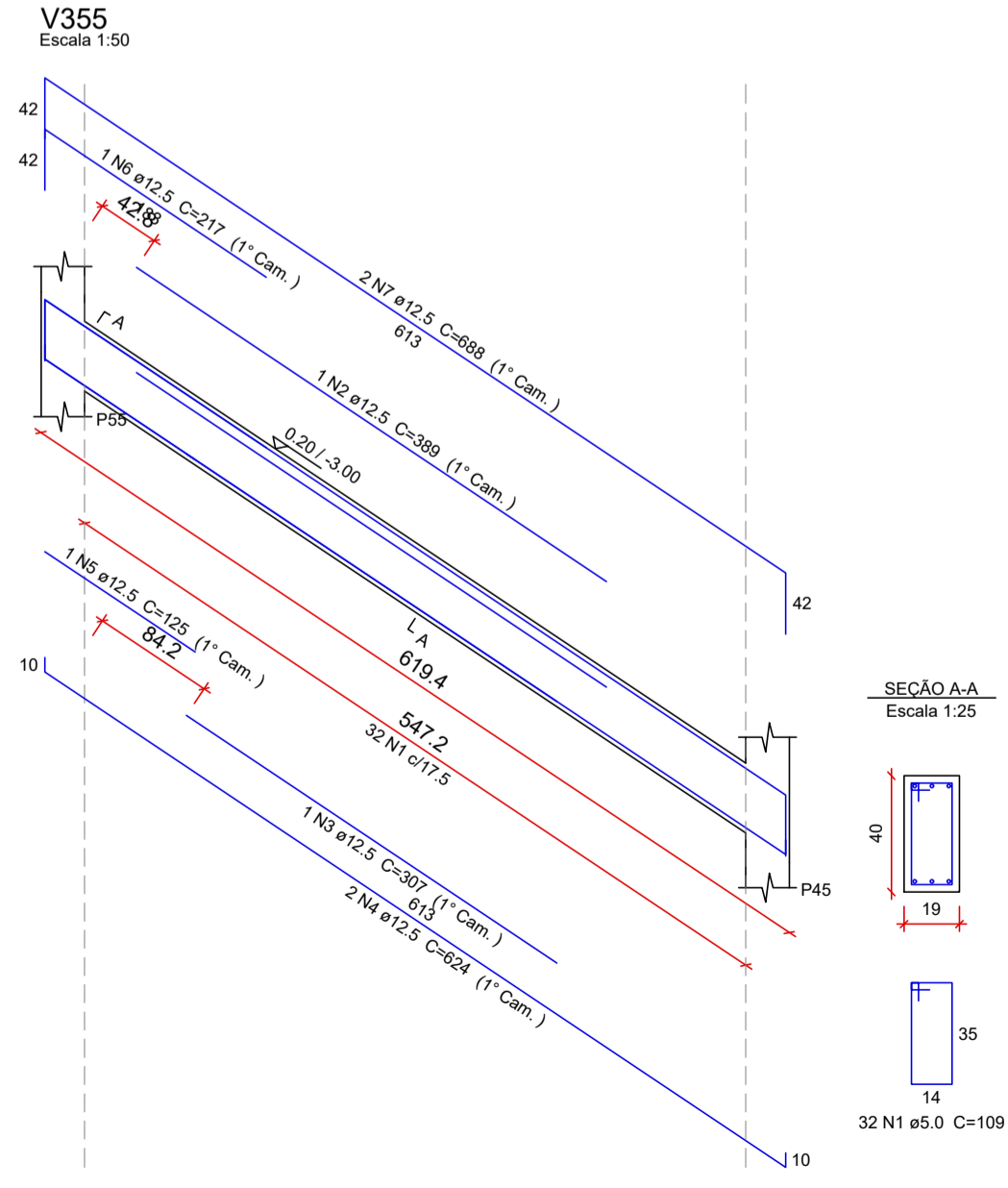
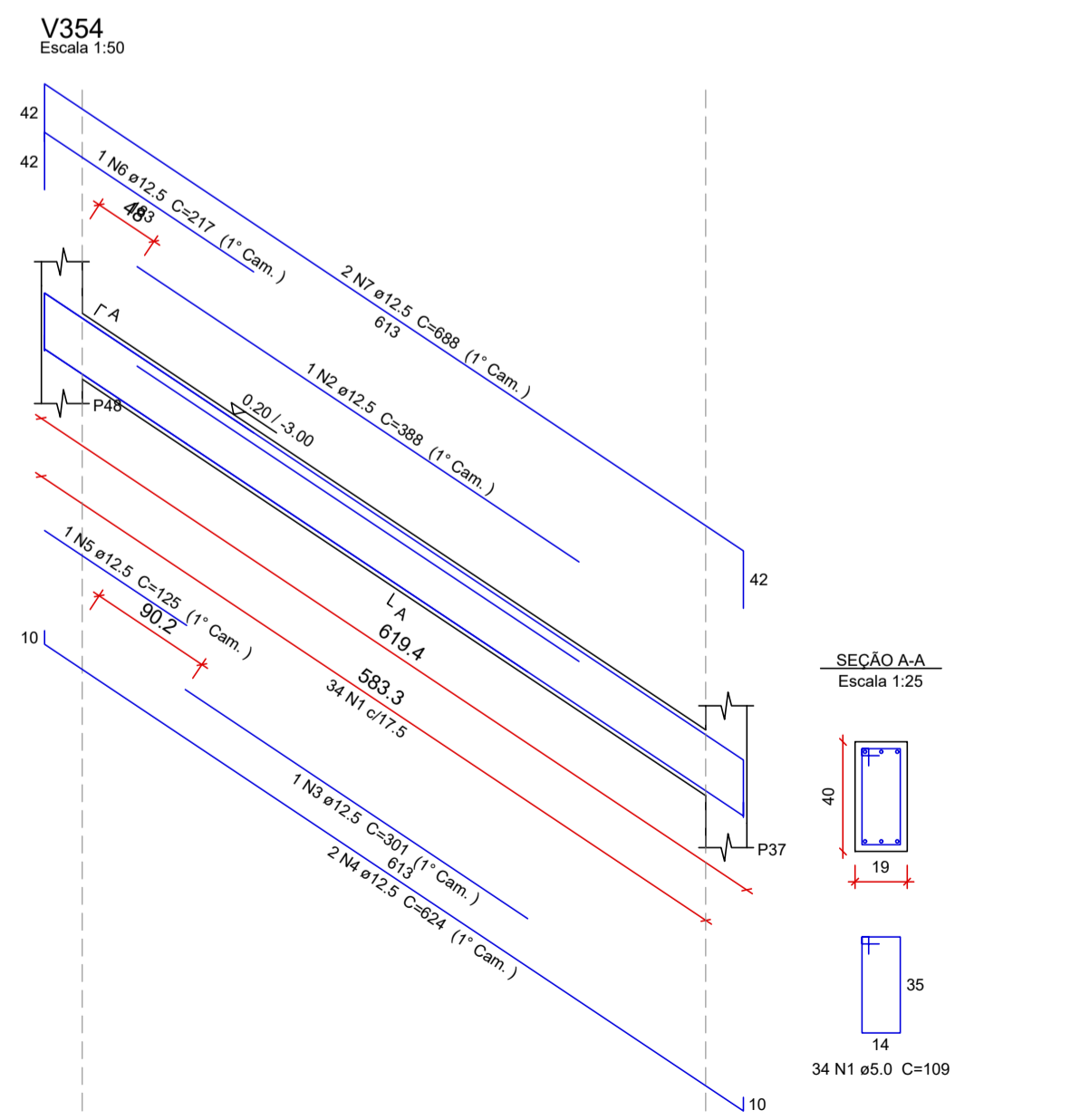
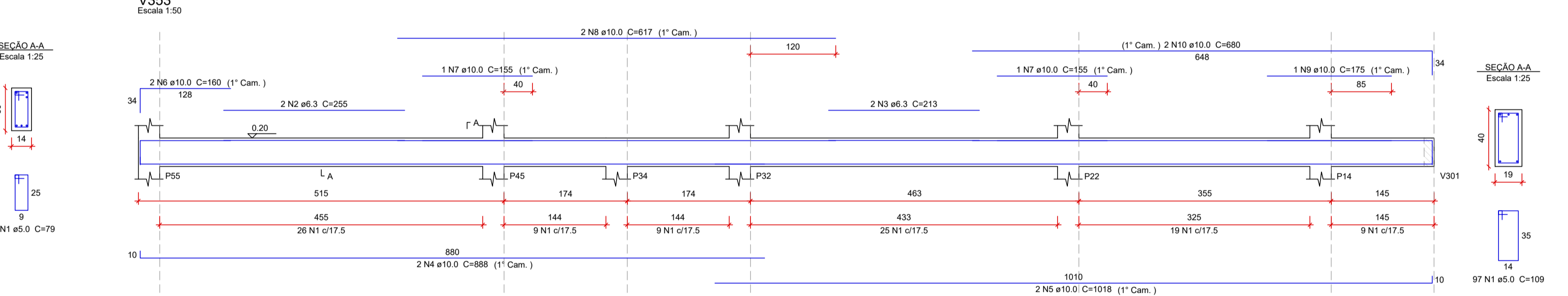
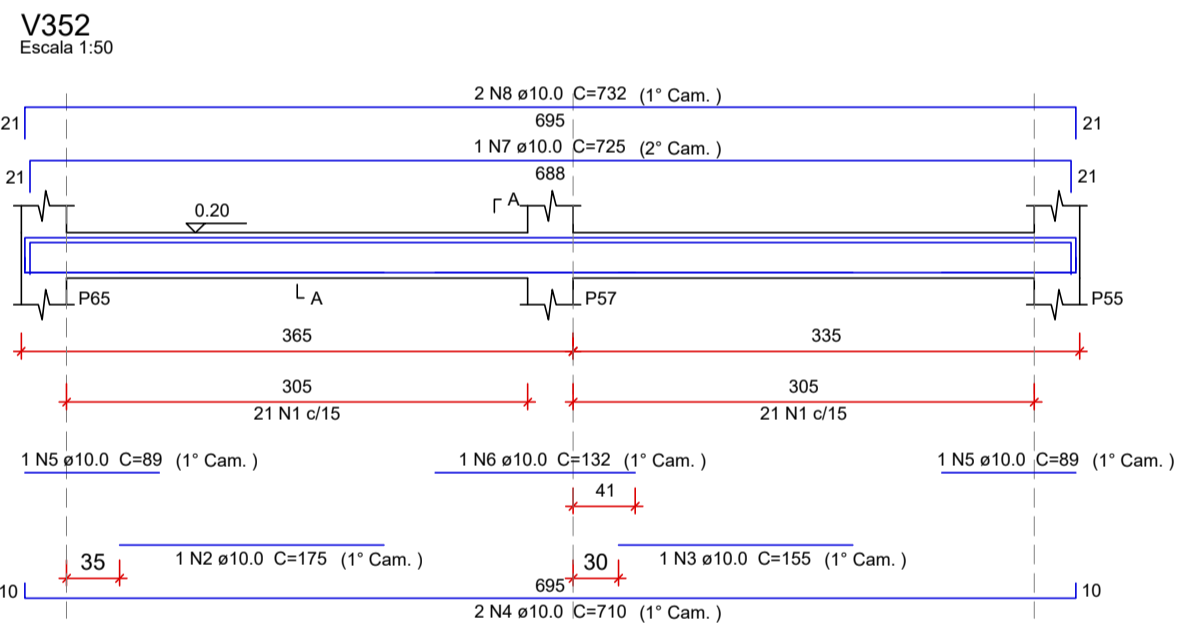
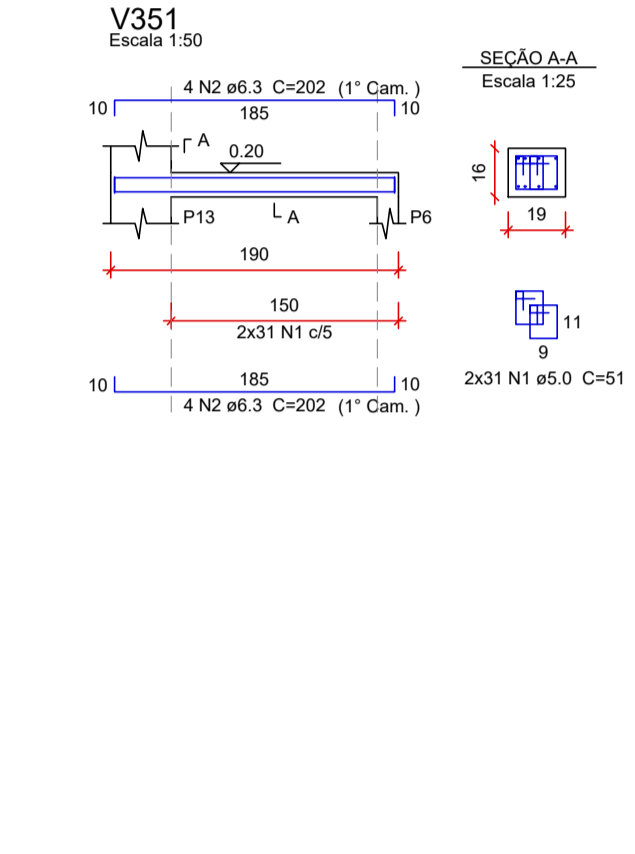
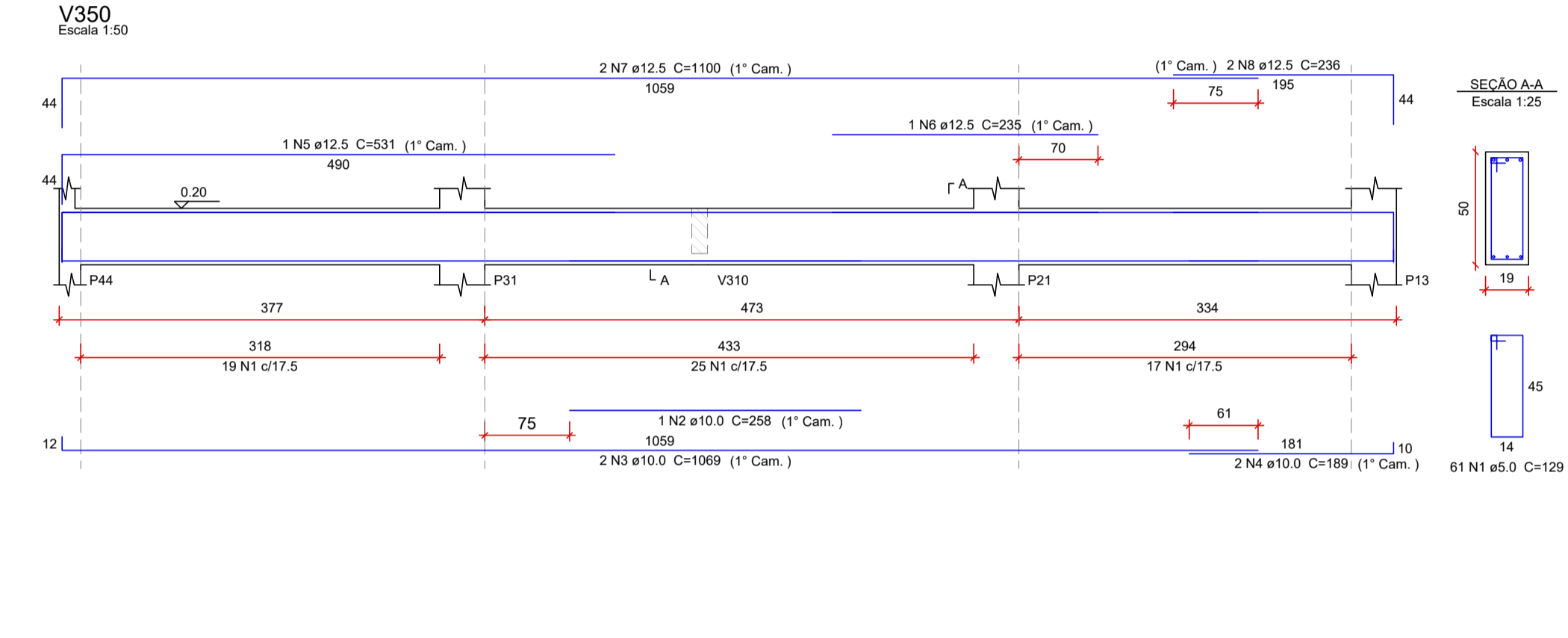
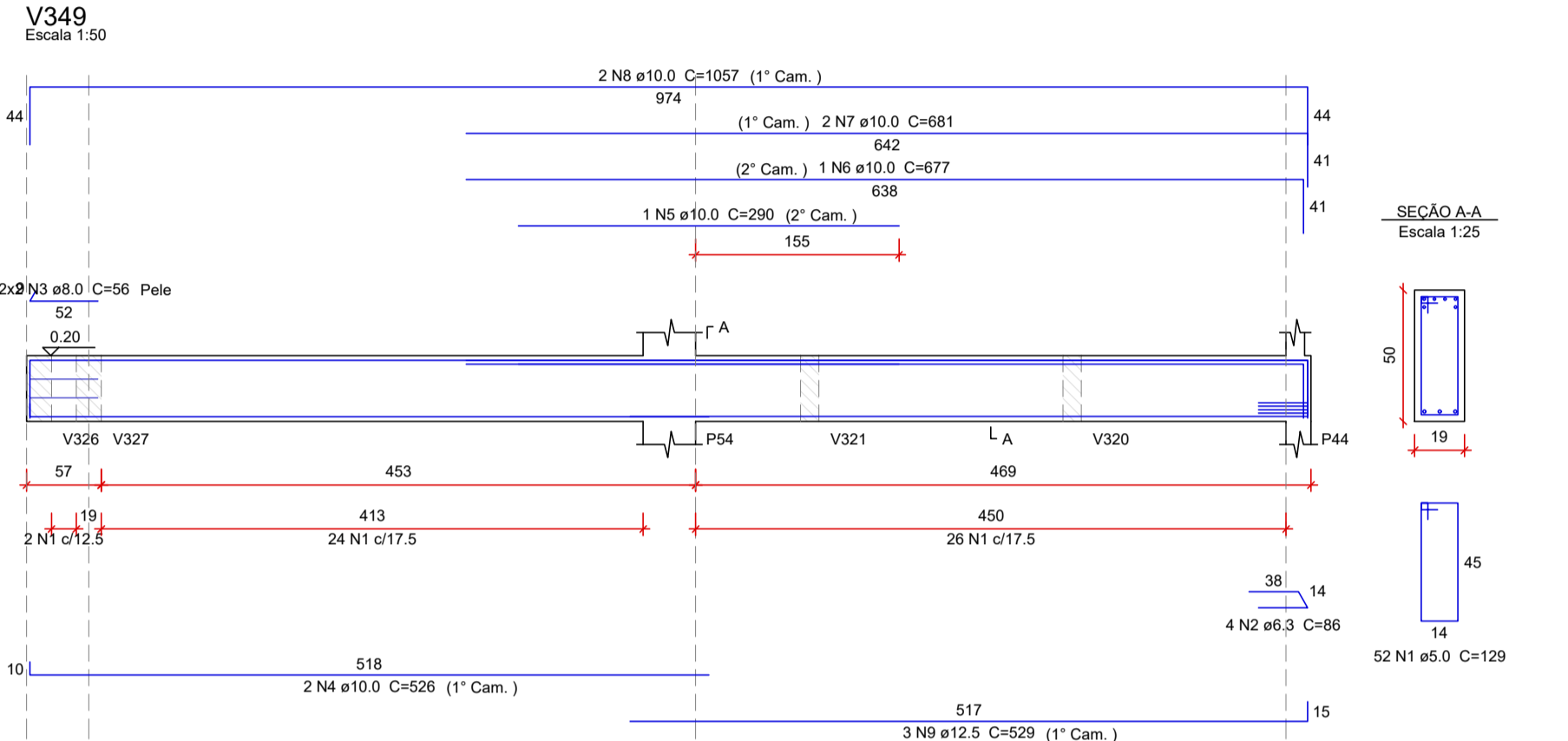
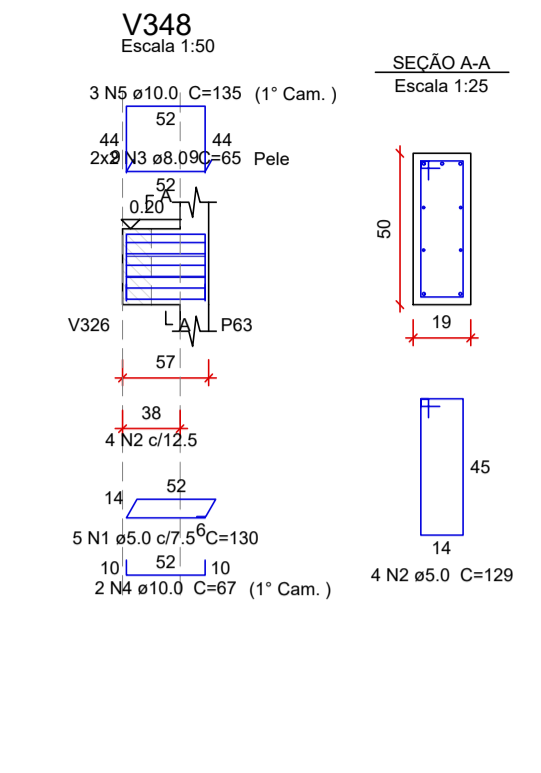
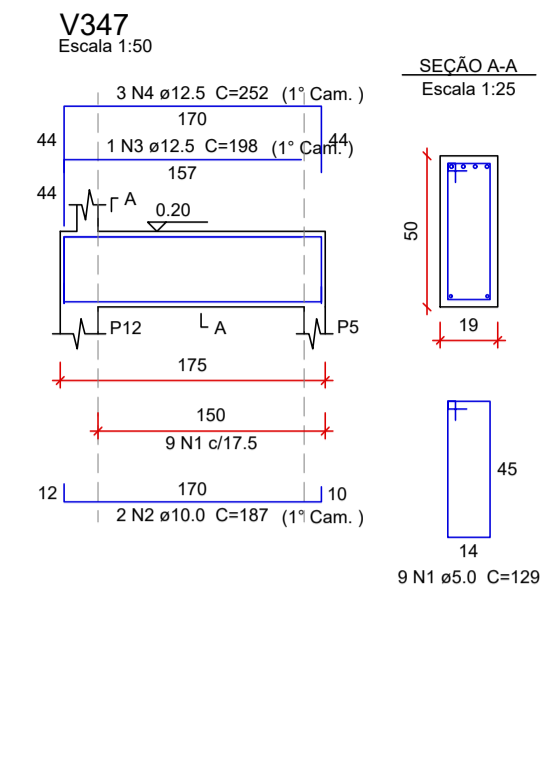
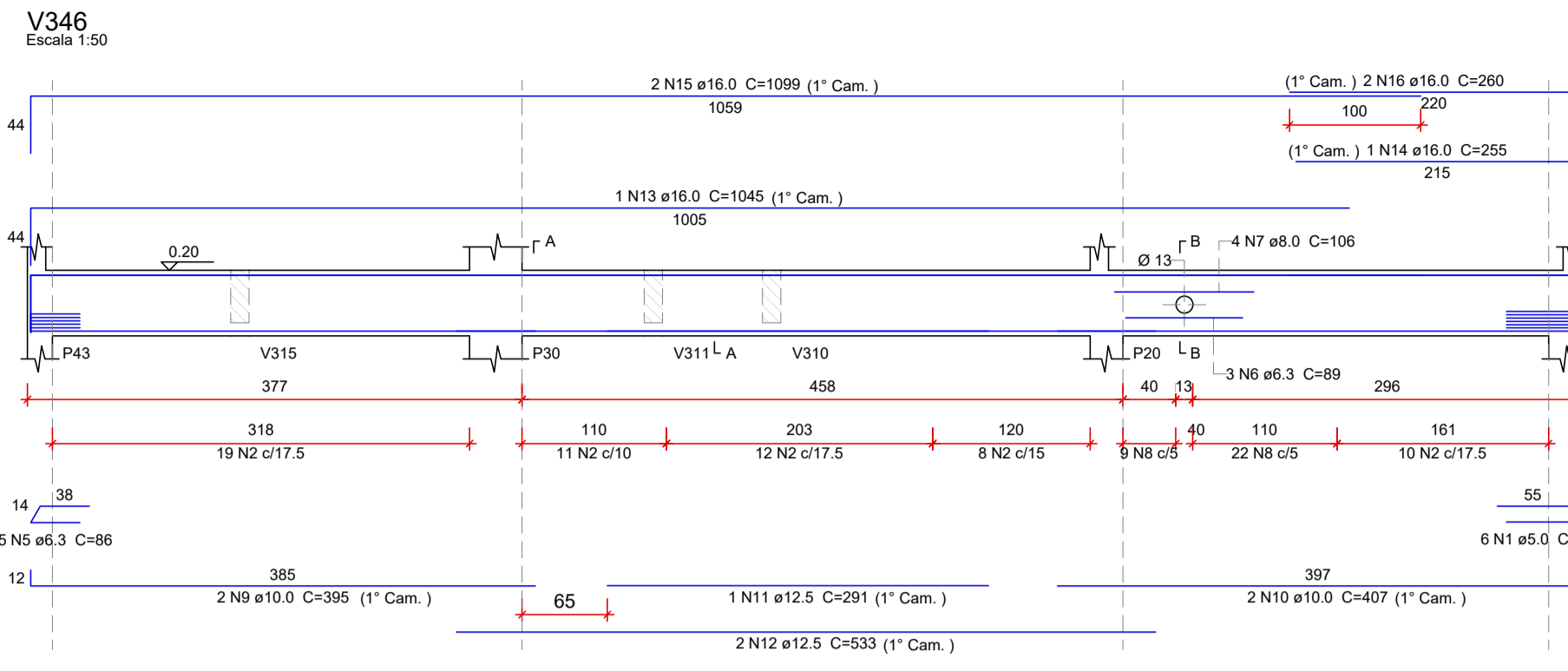


PROJETO ESTRUTURAL - CONSTRUÇÃO DA UBS CRISTAIS
ESCALA INDICADA



RELAÇÃO DO AÇO

ELEMENTO	AÇO	N	DIAM (mm)	QUANT	C.UNIT (cm)	C.TOTAL (cm)
V346	CA60	1	5.0	6	120	720
	CA60	2	5.0	60	129	7740
	CA60	3	5.0	2	69	138
	CA60	4	5.0	12	53	636
	CA50	5	6.3	5	86	430
	CA50	6	6.3	3	89	267
	CA50	7	8.0	4	106	424
	CA50	8	8.0	31	130	4030
	CA50	9	10.0	2	395	790
	CA50	10	10.0	2	407	814
V347	CA50	11	12.5	1	291	291
	CA50	12	12.5	2	533	1066
	CA50	13	16.0	1	1045	1045
	CA50	14	16.0	1	255	255
	CA50	15	16.0	2	1099	2198
	CA50	16	16.0	2	260	520
	CA50	17	5.0	8	129	1161
	CA50	2	10.0	2	187	374
	CA50	3	12.5	1	198	198
	CA50	4	12.5	3	252	756
V348	CA60	1	5.0	5	130	650
	CA60	2	5.0	4	129	516
	CA50	3	8.0	4	85	260
	CA50	4	10.0	2	67	134
	CA50	5	10.0	3	135	405
	CA60	1	5.0	52	129	6708
	CA50	2	6.3	34	86	344
	CA50	3	8.0	4	56	224
	CA50	4	10.0	2	526	1052
	CA50	5	10.0	1	290	290
V349	CA50	6	10.0	1	677	677
	CA50	7	10.0	2	881	1362
	CA50	8	10.0	2	1057	2114
	CA50	9	12.5	3	529	1587
	CA60	1	5.0	61	129	7869
	CA50	2	10.0	1	258	258
	CA50	3	10.0	1	290	290
	CA50	4	10.0	2	189	378
	CA50	5	12.5	1	531	531
	CA50	6	12.5	3	235	705
V350	CA50	7	12.5	2	1100	2200
	CA50	8	12.5	2	236	472
	CA60	1	5.0	62	51	3162
	CA50	2	6.3	8	202	1616
	CA60	1	5.0	42	79	3318
	CA50	2	10.0	1	175	175
	CA50	3	10.0	1	155	155
	CA50	4	10.0	2	710	1420
	CA50	5	10.0	2	89	178
	CA50	6	10.0	1	132	132
V351	CA50	7	10.0	1	155	155
	CA50	8	10.0	2	732	1464
	CA60	1	5.0	97	109	10573
	CA50	2	6.3	2	255	510
	CA50	3	6.3	2	213	426
	CA50	4	10.0	2	888	1776
	CA50	5	10.0	2	1018	2036
	CA50	6	10.0	2	160	320
	CA50	7	10.0	2	155	310
	CA50	8	10.0	2	617	1234
V352	CA50	9	10.0	1	175	175
	CA50	10	10.0	1	725	725
	CA50	8	10.0	2	732	1464
	CA50	1	5.0	97	109	10573
	CA50	2	6.3	2	255	510
	CA50	3	6.3	2	213	426
	CA50	4	10.0	2	888	1776
	CA50	5	10.0	2	1018	2036
	CA50	6	10.0	2	160	320
	CA50	7	10.0	2	155	310
V353	CA50	8	10.0	2	617	1234
	CA50	9	10.0	1	175	175
	CA50	10	10.0	2	680	1360
	CA60	1	5.0	34	109	3706
	CA50	2	12.5	1	388	388
	CA50	3	12.5	1	301	301
	CA50	4	12.5	2	624	1248
	CA50	5	12.5	1	125	125
	CA50	6	12.5	1	217	217
	CA50	7	12.5	2	688	1376
V354	CA60	1	5.0	32	109	3488
	CA50	2	12.5	1	389	389
	CA50	3	12.5	1	307	307
	CA50	4	12.5	2	624	1248
	CA50	5	12.5	1	125	125
	CA50	6	12.5	1	217	217
	CA50	7	12.5	2	688	1376
	CA50	8	12.5	2	688	1376
	CA50	9	12.5	2	688	1376
	CA50	10	12.5	2	688	1376

RESUMO DO AÇO

AÇO	DIAM (mm)	C.TOTAL (m)	QUANT + 10% (Barras)	PESO + 10% (kg)
CA50	6.3	36	4	9.7
CA50	8.0	49.4	5	21.4
CA50	10.0	222.5	21	150.9
CA50	12.5	146.6	14	155.3
CA50	16.0	40.2	4	69.8
CA60	5.0	503.9	47	85.4
PESO TOTAL (kg)				
CA50		407		
CA60		85.4		
VOLUME DE CONCRETO (C-30) = 5.43 m³				
ÁREA DE FORMA = 59.41 m²				

REV. 01	08/11/24	ALTERAÇÕES CONFORME VIGILÂNCIA SANITÁRIA	DAC
REV. 00	20/05/24	EMIÇÃO INICIAL	DAC
REVISÃO	DATA:	DESCRIÇÃO:	RESP.:
 <p>Prefeitura Municipal de Pouso Alegre</p>			
 <p>DAC Engenharia</p> <p>Rua Cel. Joaquim Francisco, 341, Bairro Varginha CEP: 37501-052 - Itajubá / MG Tel: (35) 2143 - 9087 www.dacengenharia.com.br</p>		<p>COORDENAÇÃO</p> <p>RAFAEL BARBOSA CARREIRA CAU: 00A155411-5</p> <p>RESPONSÁVEL TÉCNICO E AUTOR</p> <p>ALOISIO CAETANO FERREIRA CREA: MG-97.132/D</p>	
<p>EMPREENHAMENTO</p> <p>CONSTRUÇÃO DA UBS CRISTAIS</p>			
<p>ENDEREÇO</p> <p>RUA ROBERTO SCODELER, S/N, BAIRRO BELLA ITALIA POUSO ALEGRE - MINAS GERAIS</p>		<p>DISCIPLINA</p> <p>ESTRUTURAL</p>	
<p>ASSUNTO</p> <p>PROJETO ESTRUTURAL EM CONCRETO ARMADO DETALHAMENTO DAS VIGAS</p>		<p>FASE DO PROJETO</p> <p>EXECUTIVO</p>	
<p>DATA INICIAL</p> <p>20/05/2024</p>		<p>FOLHA Nº</p> <p>22/34</p>	
ESCALA	INDICADA	REVISÃO	ARQUIVO
		R01	DAC-PMPA-CRIS-PE-EST-R01.DWG