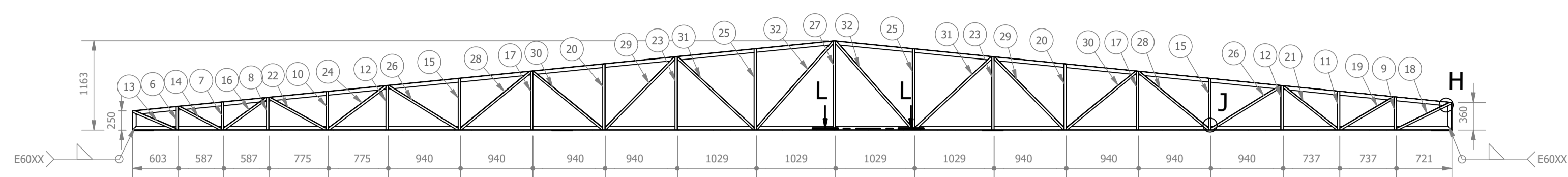
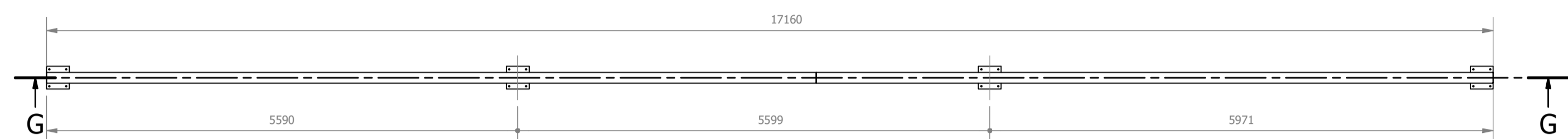


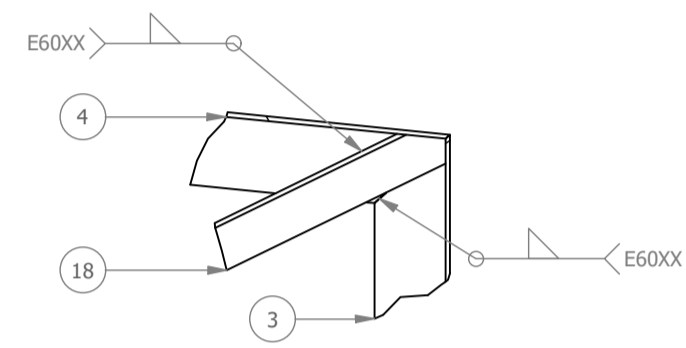
**PROJETO DE CONSTRUÇÃO DA UNIDADE DE PRONTO ATENDIMENTO**  
**ESCALA INDICADA**



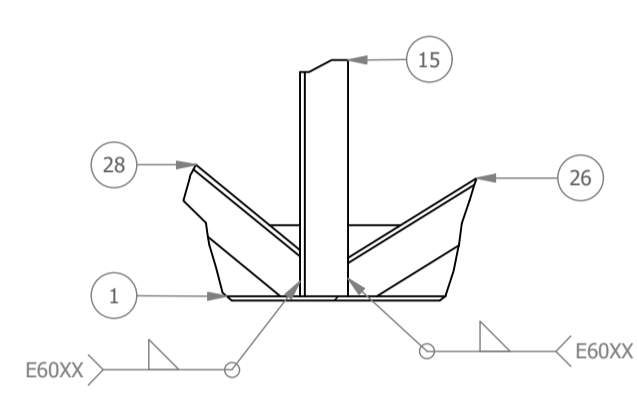
SEÇÃO G-G  
ESCALA 1:50



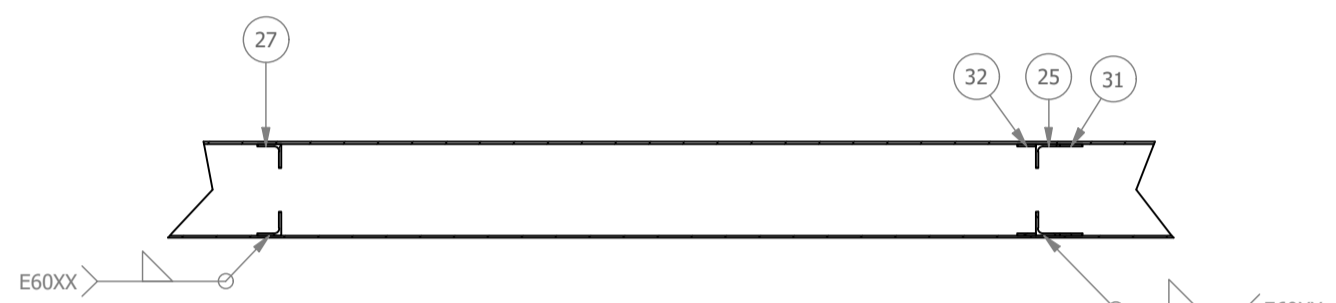
VISTA SUPERIOR TR09A  
ESCALA 1:50



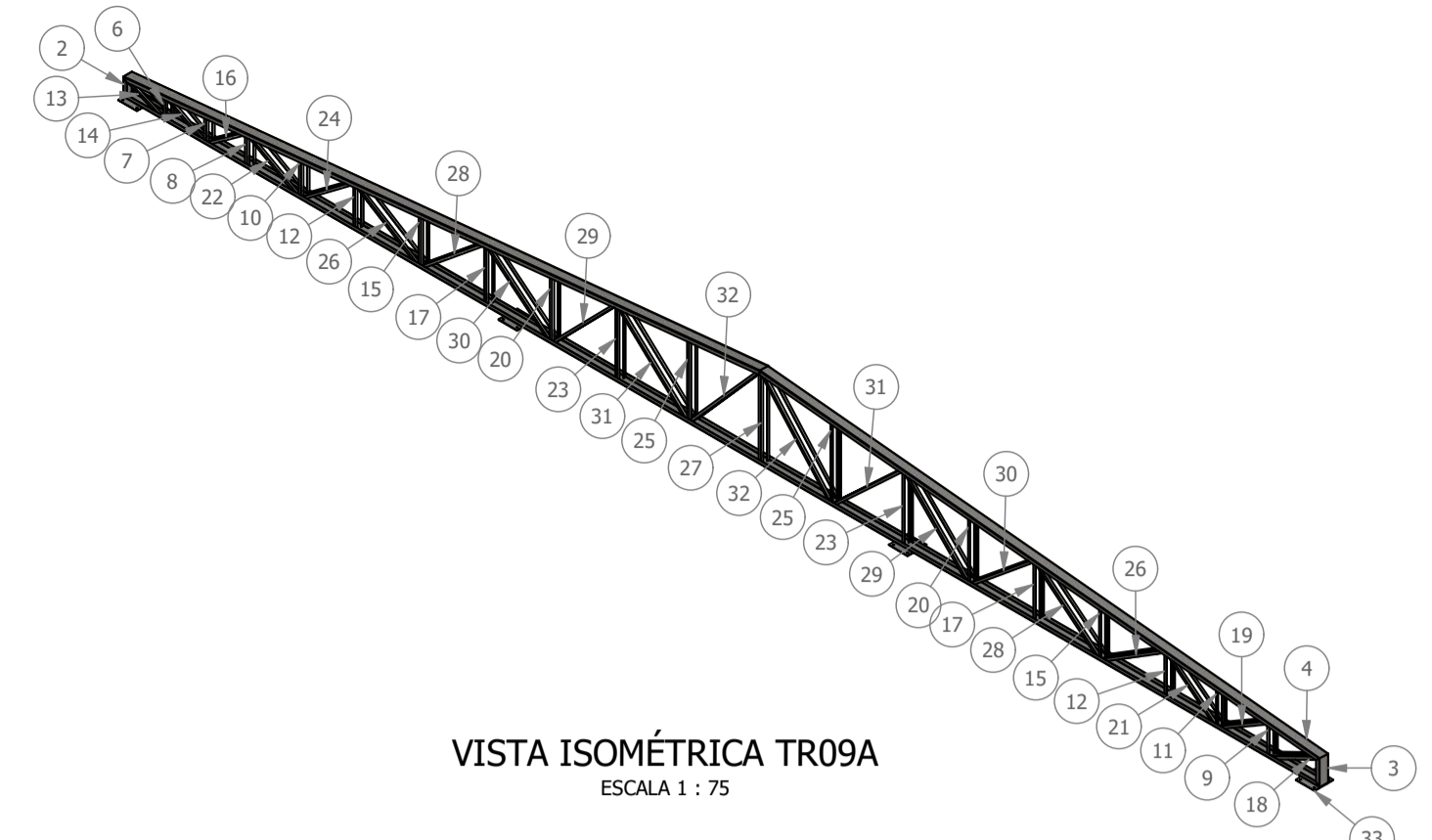
DETALHE H  
ESCALA 1:5



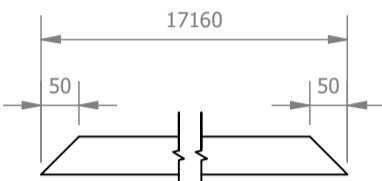
DETALHE J  
ESCALA 1:5



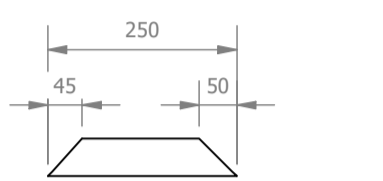
SEÇÃO L-L  
ESCALA 1:10



VISTA ISOMÉTRICA TR09A  
ESCALA 1:75



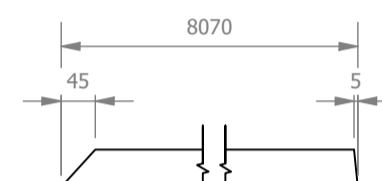
U1  
ESCALA 1:10



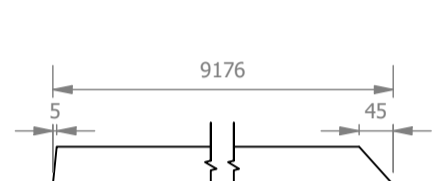
U2  
ESCALA 1:10



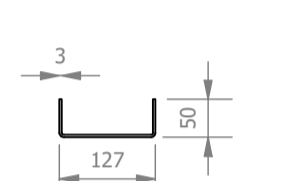
U3  
ESCALA 1:10



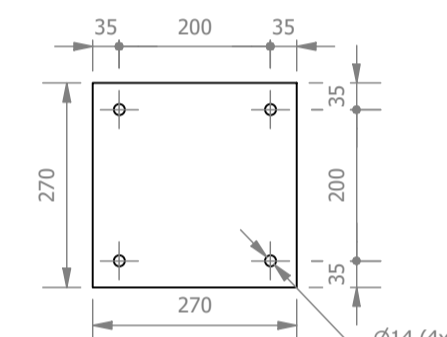
U4  
ESCALA 1:10



U5  
ESCALA 1:10



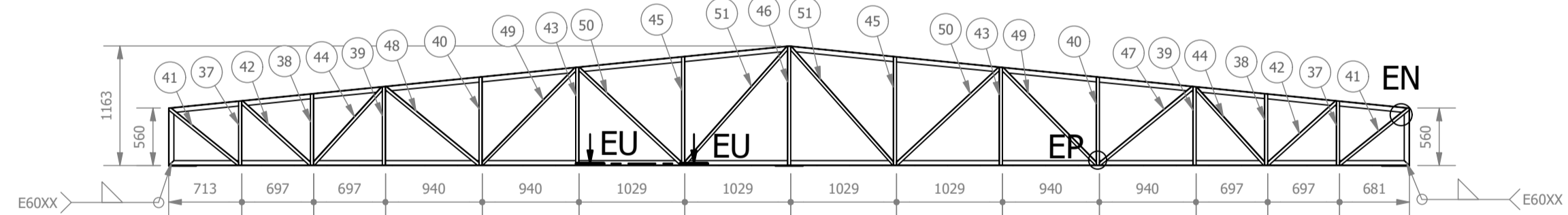
PERFIL U  
ESCALA 1:10



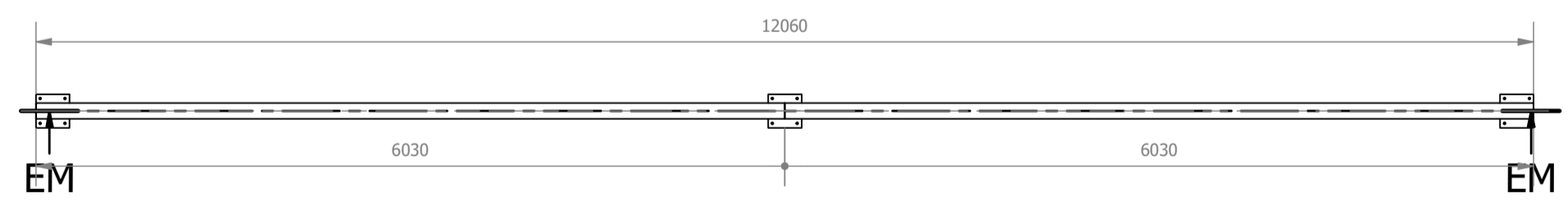
CH01  
ESCALA 1:10

LISTA DE PEÇAS - TR09A						
ID	ITEM	QTD	DESCRIÇÃO	COMPRIM.	MATERIAL	PESO UNIT.
1	U1	1	PERFIL U 127x50x3	17160	Aço ASTM A36	87,6 kg
2	U2	1	PERFIL U 127x50x3	250	Aço ASTM A36	1,2 kg
3	U3	1	PERFIL U 127x50x3	360	Aço ASTM A36	1,7 kg
4	U4	1	PERFIL U 127x50x3	8070	Aço ASTM A36	41,2 kg
5	U5	1	PERFIL U 127x50x3	9176	Aço ASTM A36	46,9 kg
6	L1	2	CANTONEIRA L 1.1/4 x 1.1/4 x 1/8	304	Aço ASTM A36	0,5 kg
7	L2	2	CANTONEIRA L 1.1/4 x 1.1/4 x 1/8	363	Aço ASTM A36	0,6 kg
8	L3	2	CANTONEIRA L 1.1/4 x 1.1/4 x 1/8	422	Aço ASTM A36	0,7 kg
9	L4	2	CANTONEIRA L 1.1/4 x 1.1/4 x 1/8	429	Aço ASTM A36	0,7 kg
10	L5	2	CANTONEIRA L 1.1/4 x 1.1/4 x 1/8	499	Aço ASTM A36	0,8 kg
11	L6	2	CANTONEIRA L 1.1/4 x 1.1/4 x 1/8	503	Aço ASTM A36	0,8 kg
12	L7	4	CANTONEIRA L 1.1/4 x 1.1/4 x 1/8	577	Aço ASTM A36	0,9 kg
13	L8	2	CANTONEIRA L 1.1/4 x 1.1/4 x 1/8	619	Aço ASTM A36	0,9 kg
14	L9	2	CANTONEIRA L 1.1/4 x 1.1/4 x 1/8	633	Aço ASTM A36	1 kg
15	L10	4	CANTONEIRA L 1.1/4 x 1.1/4 x 1/8	671	Aço ASTM A36	1,1 kg
16	L11	2	CANTONEIRA L 1.1/4 x 1.1/4 x 1/8	695	Aço ASTM A36	1,1 kg
17	L12	4	CANTONEIRA L 1.1/4 x 1.1/4 x 1/8	765	Aço ASTM A36	1,2 kg
18	L13	2	CANTONEIRA L 1.1/4 x 1.1/4 x 1/8	801	Aço ASTM A36	1,2 kg
19	L14	2	CANTONEIRA L 1.1/4 x 1.1/4 x 1/8	826	Aço ASTM A36	1,3 kg
20	L15	4	CANTONEIRA L 1.1/4 x 1.1/4 x 1/8	859	Aço ASTM A36	1,3 kg
21	L16	2	CANTONEIRA L 1.1/4 x 1.1/4 x 1/8	909	Aço ASTM A36	1,4 kg
22	L17	2	CANTONEIRA L 1.1/4 x 1.1/4 x 1/8	954	Aço ASTM A36	1,3 kg
23	L18	4	CANTONEIRA L 1.1/4 x 1.1/4 x 1/8	953	Aço ASTM A36	1,5 kg
24	L19	2	CANTONEIRA L 1.1/4 x 1.1/4 x 1/8	939	Aço ASTM A36	1,4 kg
25	L20	4	CANTONEIRA L 1.1/4 x 1.1/4 x 1/8	1056	Aço ASTM A36	1,7 kg
26	L21	4	CANTONEIRA L 1.1/4 x 1.1/4 x 1/8	1076	Aço ASTM A36	1,7 kg
27	L22	2	CANTONEIRA L 1.1/4 x 1.1/4 x 1/8	1157	Aço ASTM A36	1,8 kg
28	L23	4	CANTONEIRA L 1.1/4 x 1.1/4 x 1/8	1185	Aço ASTM A36	1,8 kg
29	L24	4	CANTONEIRA L 1.1/4 x 1.1/4 x 1/8	1314	Aço ASTM A36	2 kg
30	L25	4	CANTONEIRA L 1.1/4 x 1.1/4 x 1/8	1187	Aço ASTM A36	1,8 kg
31	L26	4	CANTONEIRA L 1.1/4 x 1.1/4 x 1/8	1379	Aço ASTM A36	2,1 kg
32	L27	4	CANTONEIRA L 1.1/4 x 1.1/4 x 1/8	1526	Aço ASTM A36	2,4 kg
33	Ch1	4	270 x 270 x 6,35		Aço ASTM A36	3,6 kg

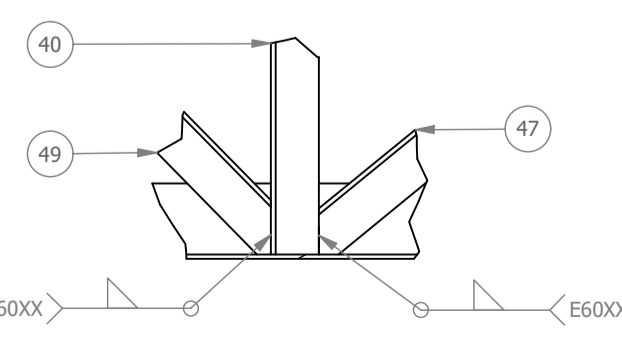
LISTA DE PEÇAS - TR09B						
ID	ITEM	QTD	DESCRIÇÃO	COMPRIM.	MATERIAL	PESO UNIT.
34	U1	1	PERFIL U 127x50x3	12060	Aço ASTM A36	61,5 kg
35	U2	2	PERFIL U 127x50x3	560	Aço ASTM A36	2,7 kg
36	U3	2	PERFIL U 127x50x3	6060	Aço ASTM A36	30,9 kg
37	L1	4	CANTONEIRA L 1.1/4 x 1.1/4 x 1/8	625	Aço ASTM A36	1 kg
38	L2	4	CANTONEIRA L 1.1/4 x 1.1/4 x 1/8	695	Aço ASTM A36	1,1 kg
39	L3	4	CANTONEIRA L 1.1/4 x 1.1/4 x 1/8	765	Aço ASTM A36	1,2 kg
40	L4	4	CANTONEIRA L 1.1/4 x 1.1/4 x 1/8	859	Aço ASTM A36	1,3 kg
41	L5	4	CANTONEIRA L 1.1/4 x 1.1/4 x 1/8	876	Aço ASTM A36	1,3 kg
42	L6	4	CANTONEIRA L 1.1/4 x 1.1/4 x 1/8	913	Aço ASTM A36	1,4 kg
43	L7	4	CANTONEIRA L 1.1/4 x 1.1/4 x 1/8	953	Aço ASTM A36	1,5 kg
44	L8	4	CANTONEIRA L 1.1/4 x 1.1/4 x 1/8	1011	Aço ASTM A36	1,5 kg
45	L9	4	CANTONEIRA L 1.1/4 x 1.1/4 x 1/8	1056	Aço ASTM A36	1,7 kg
46	L10	2	CANTONEIRA L 1.1/4 x 1.1/4 x 1/8	1157	Aço ASTM A36	1,8 kg
47	L11	2	CANTONEIRA L 1.1/4 x 1.1/4 x 1/8	1187	Aço ASTM A36	1,8 kg
48	L12	2	CANTONEIRA L 1.1/4 x 1.1/4 x 1/8	1187	Aço ASTM A36	1,8 kg
49	L13	4	CANTONEIRA L 1.1/4 x 1.1/4 x 1/8	1314	Aço ASTM A36	2 kg
50	L14	4	CANTONEIRA L 1.1/4 x 1.1/4 x 1/8	1379	Aço ASTM A36	2,1 kg
51	L15	4	CANTONEIRA L 1.1/4 x 1.1/4 x 1/8	1526	Aço ASTM A36	2,4 kg
52	Ch1	3	270 x 270 x 6,35		Aço ASTM A36	3,6 kg



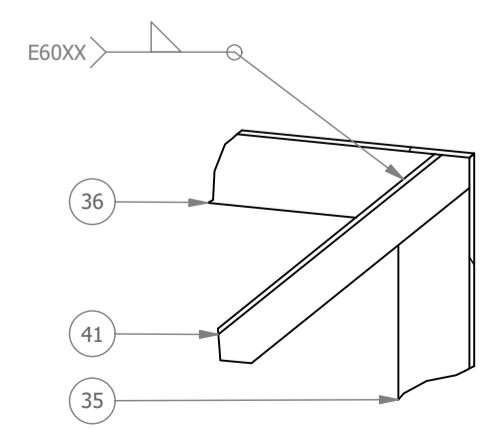
SEÇÃO EM-EM  
ESCALA 1:50



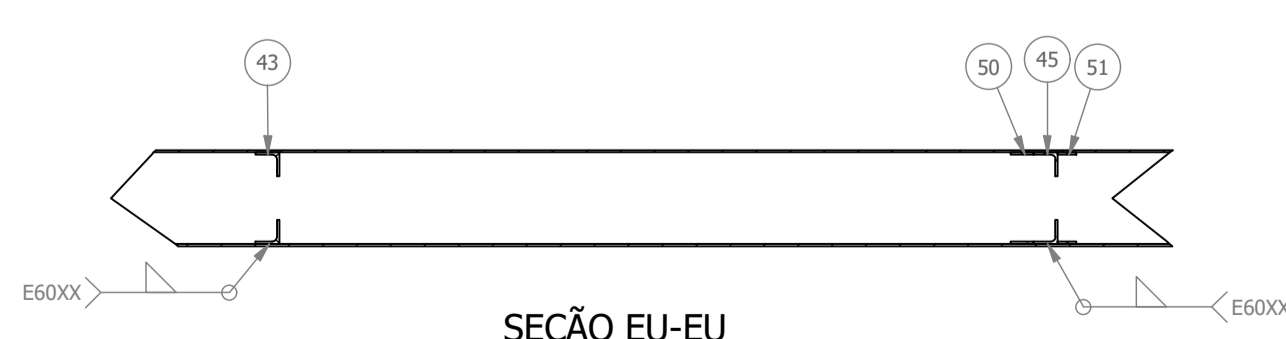
VISTA SUPERIOR TR09B  
ESCALA 1:50



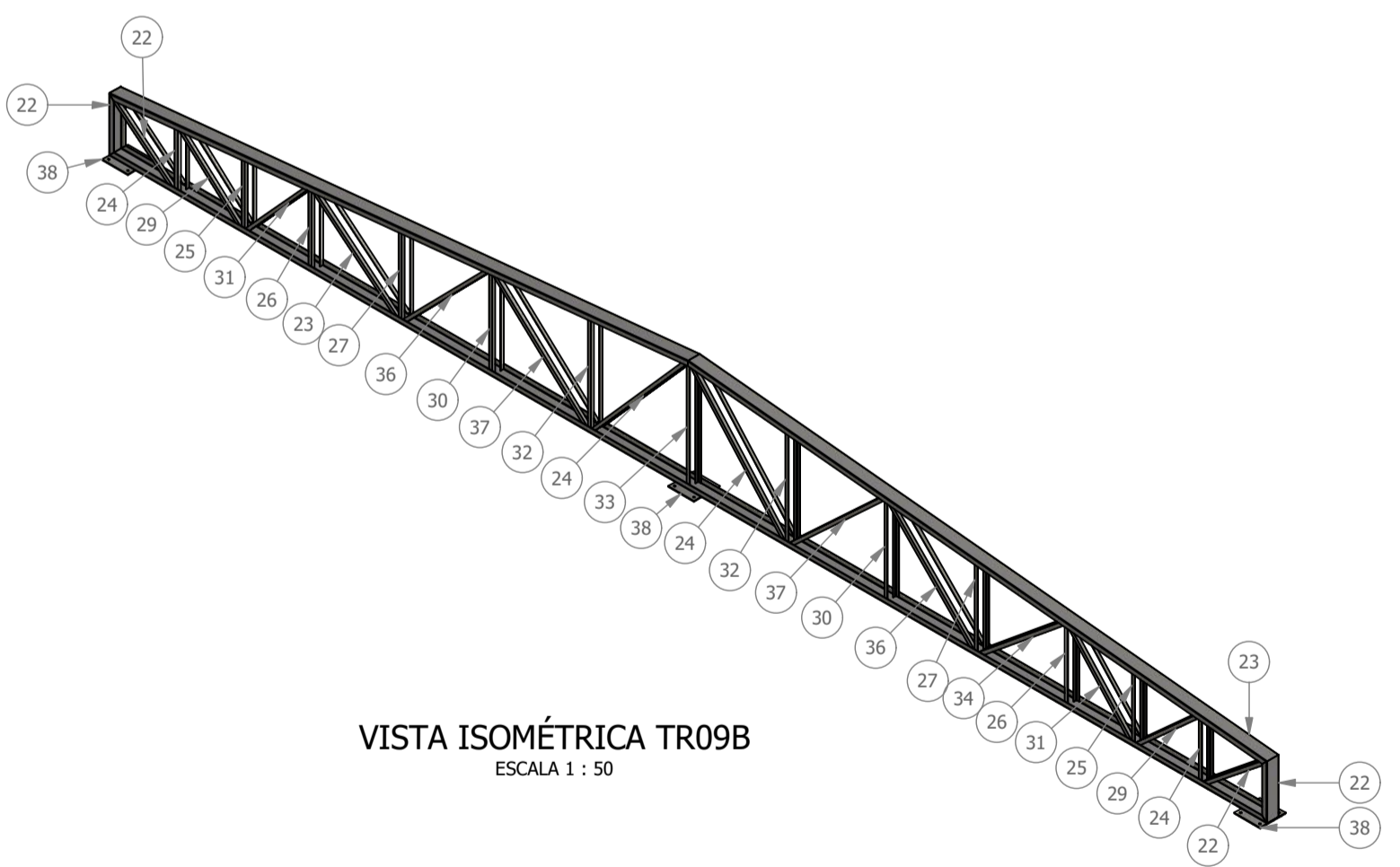
DETALHE EP  
ESCALA 1:5



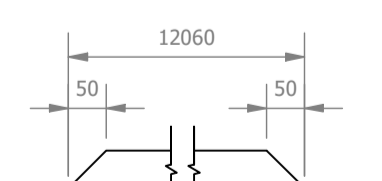
DETALHE EN  
ESCALA 1:5



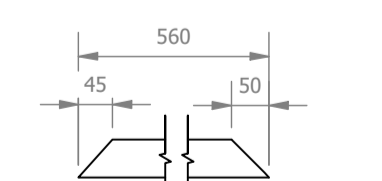
SEÇÃO EU-EU  
ESCALA 1:10



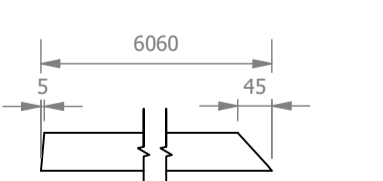
VISTA ISOMÉTRICA TR09B  
ESCALA 1:50



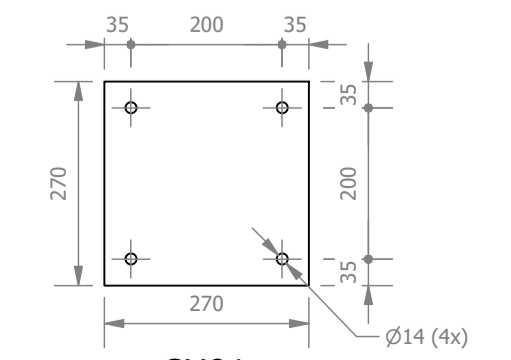
U1  
ESCALA 1:10



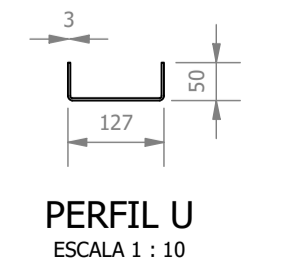
U2  
ESCALA 1:10



U3  
ESCALA 1:10



CH01  
ESCALA 1:10



PERFIL U  
ESCALA 1:10

REV. 01	28/04/23	CONFORME SOLICITAÇÕES DA VIGILÂNCIA SANITÁRIA	DAC
REV. 00	31/01/23	EMIÇÃO INICIAL	DAC
REVISÃO:	DATA:	DESCRIÇÃO	RESP.:
CLIENTE			
 <p>Prefeitura Municipal de Pouso Alegre</p>			
 <p>Rua Miguel Vianna, nº 81, sala 12 Bairro Morro Chic CEP: 37500-080 - Itajubá / MG Tel: (35) 3623-5720 www.dacengenharia.com.br</p>		COORDENAÇÃO ALOSIO CAETANO FERREIRA  RESPONSÁVEL TÉCNICO E AUTOR  ENGR. CIVIL FLÁVIA C. BARBOSA      CREA: MG-187.842/D	
EMPRESAMENTO			
<b>CONSTRUÇÃO DA UNIDADE DE PRONTO ATENDIMENTO</b>			
ENDEREÇO RUA PIRANGUINHO, B. SÃO JOÃO POUSO ALEGRE - MINAS GERAIS		DISCIPLINA METÁLICA FASE DO PROJETO EXECUTIVO FOLHA Nº: <b>05/15</b>	
DATA INICIAL	ESCALA	REVISÃO	ARQUIVO
31/01/2023	INDICADA	R01	DAC-PMPA-UJA-PE-MET-R01-05.DWG