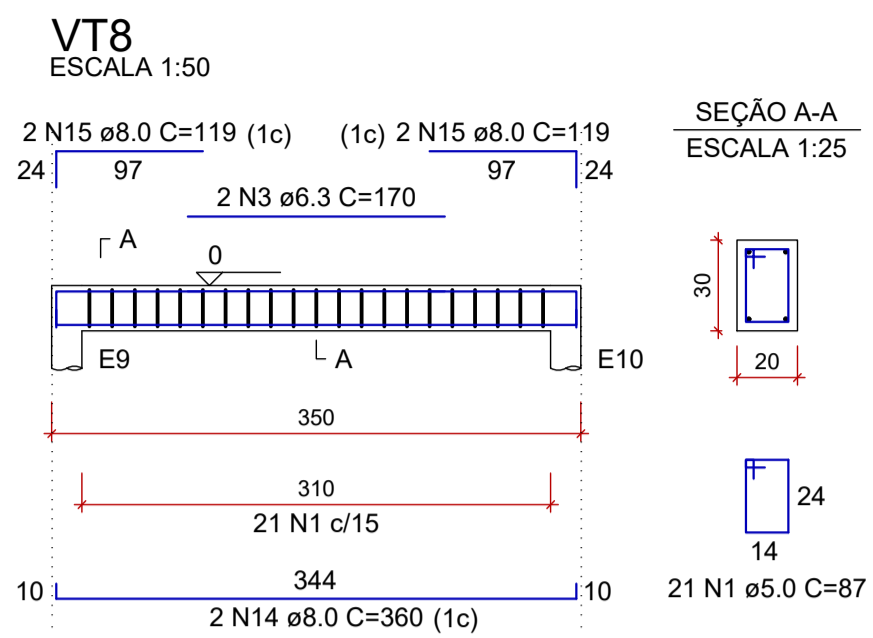
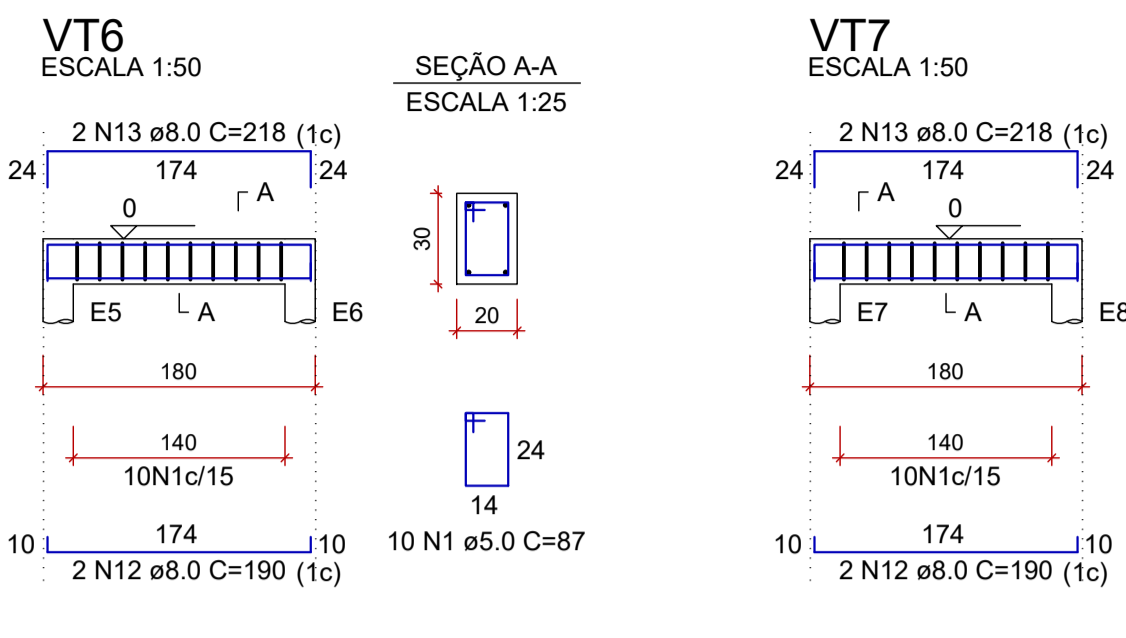
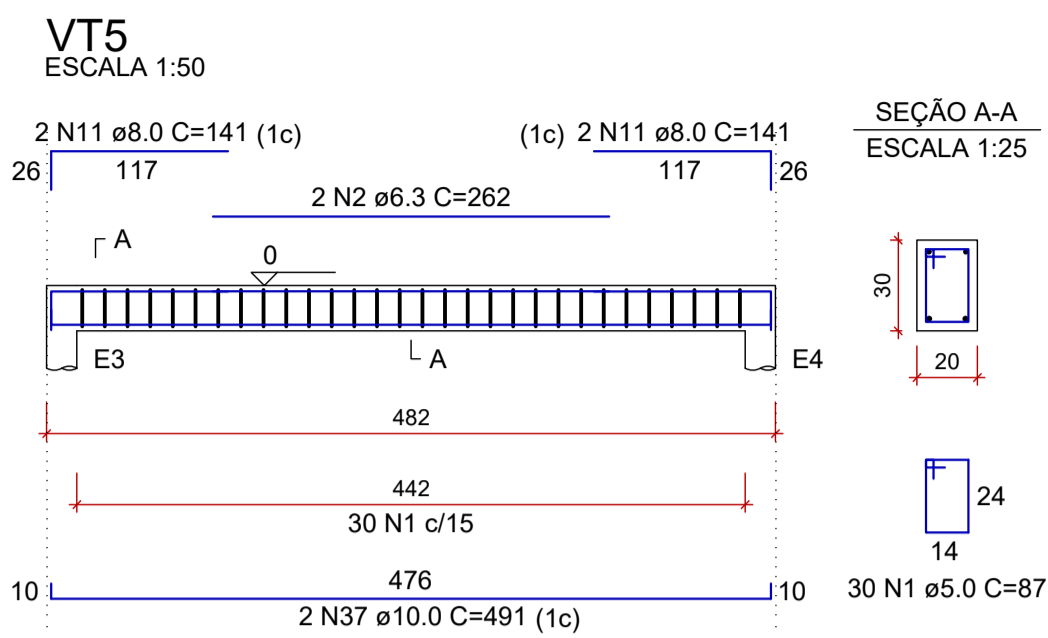


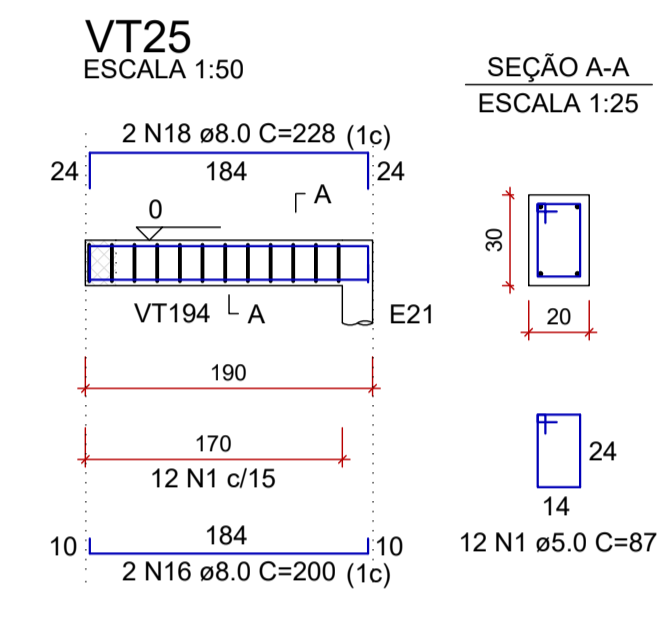
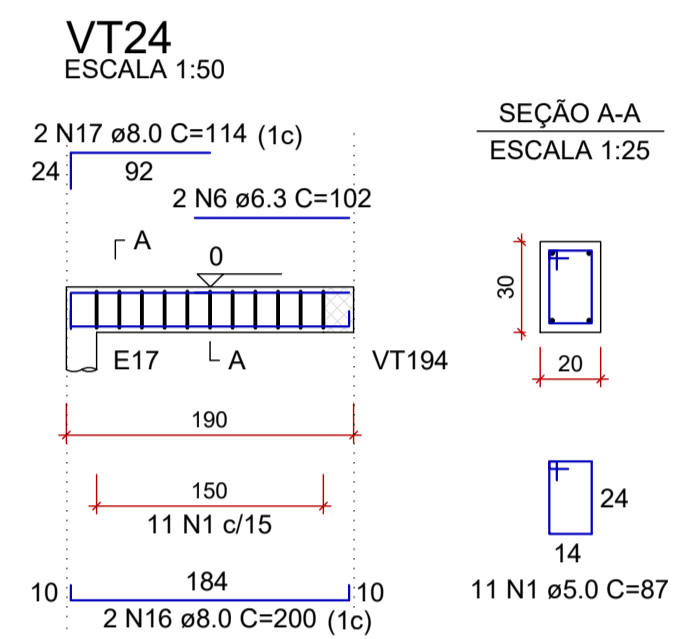
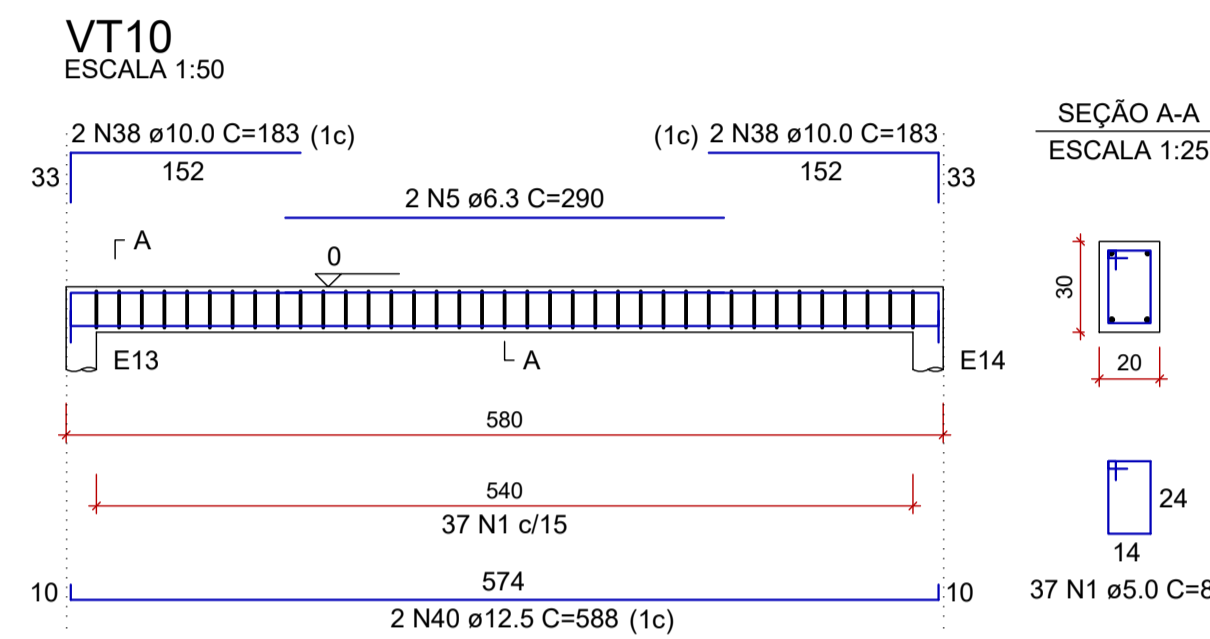
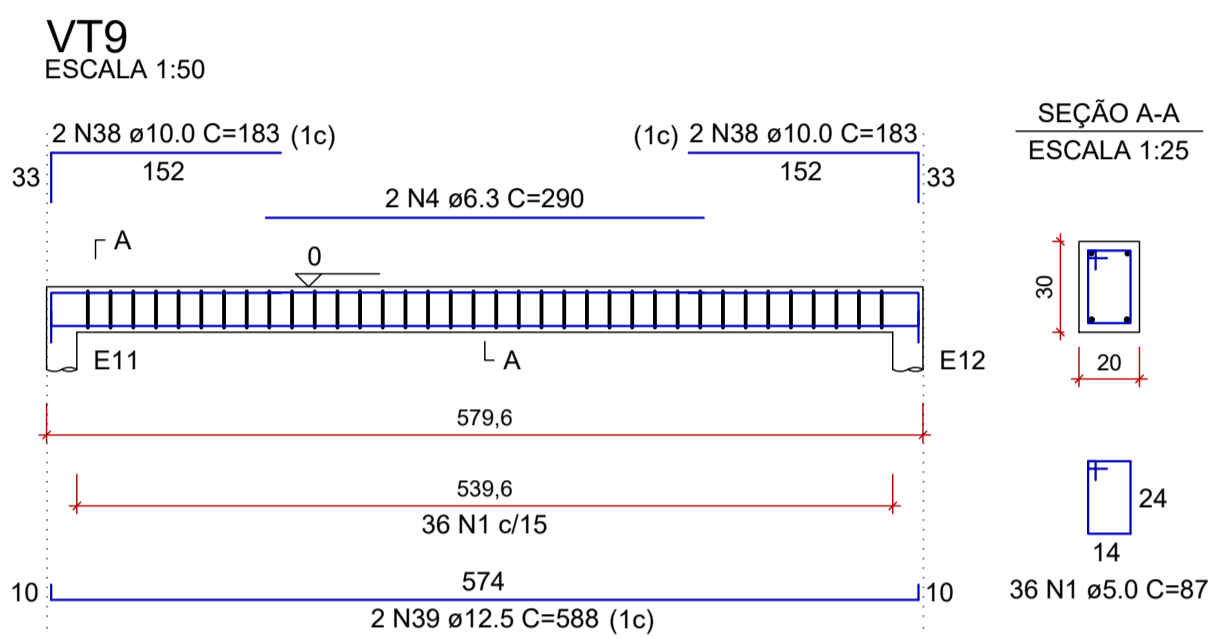
PROJETO ESTRUTURAL - CONSTRUÇÃO DA UNIDADE DE PRONTO ATENDIMENTO
ESCALA INDICADA



RELAÇÃO DO AÇO

VT5	VT6	VT7
VT8	VT9	VT10
VT24	VT25	VT26
VT36	VT42	VT46
VT47	VT48	VT54
VT55	VT64	VT65
VT75	VT82	VT93
VT101		

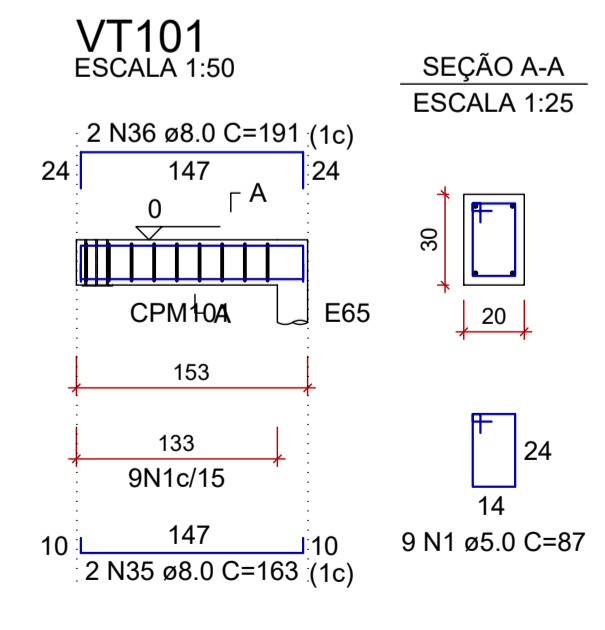
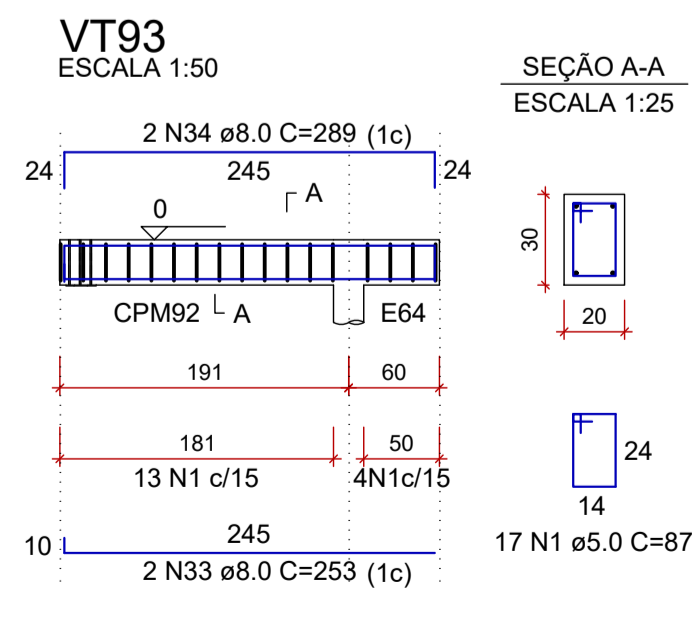
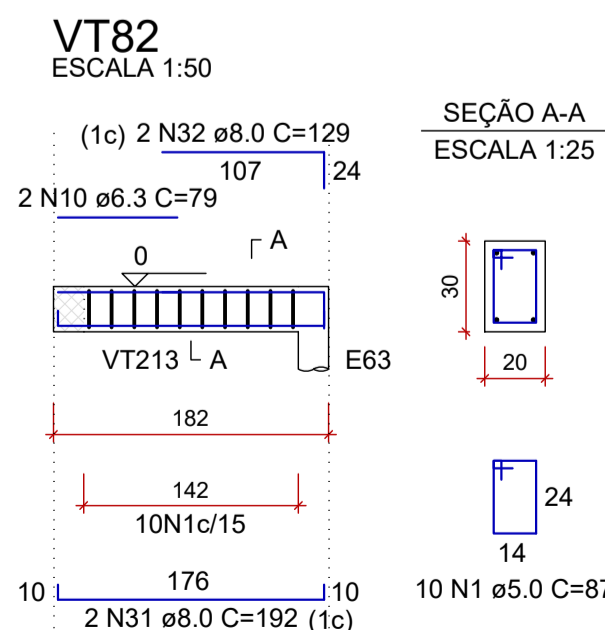
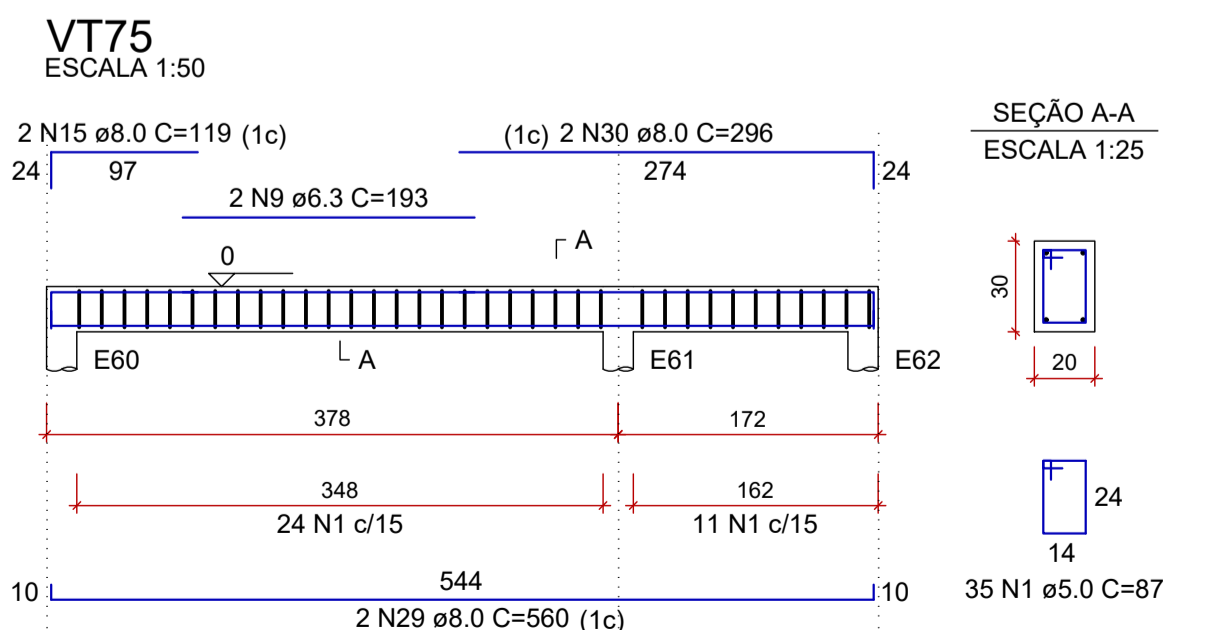
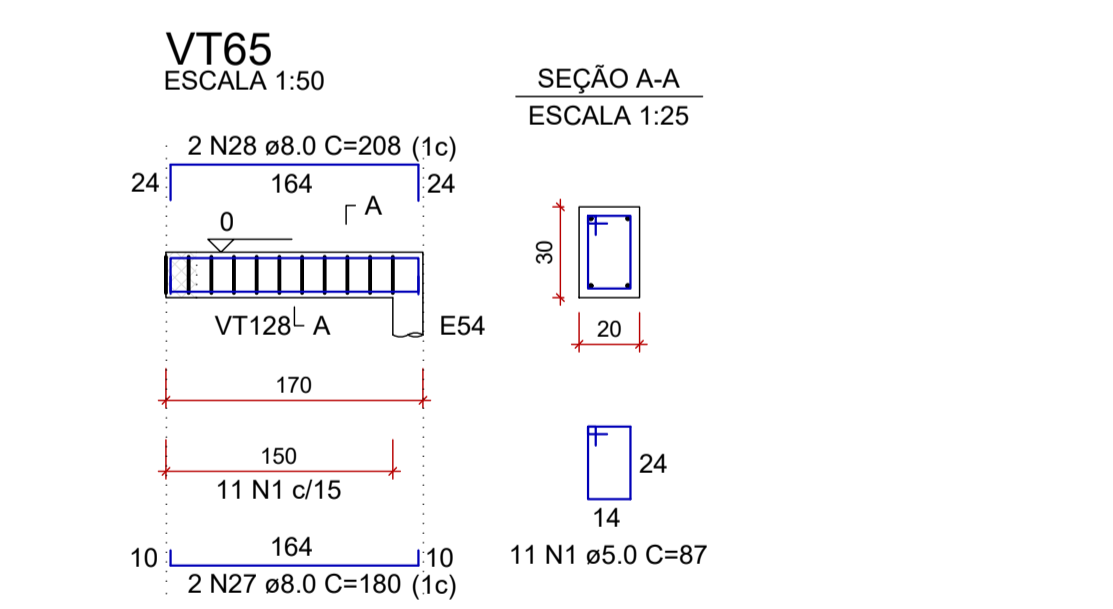
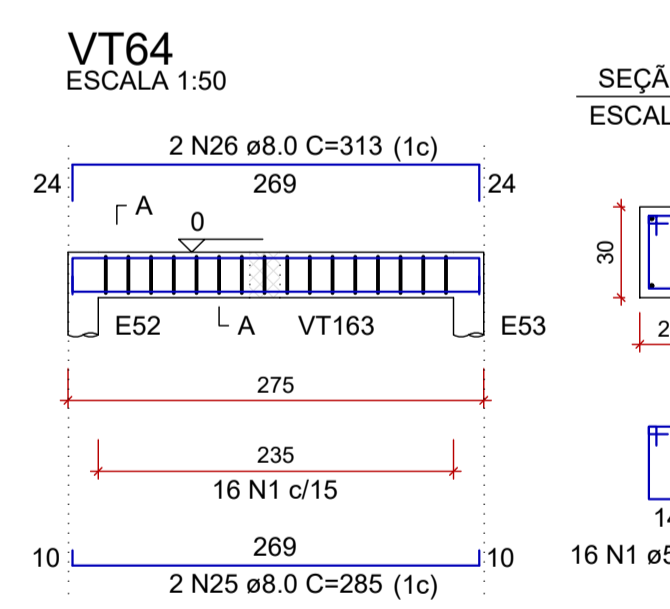
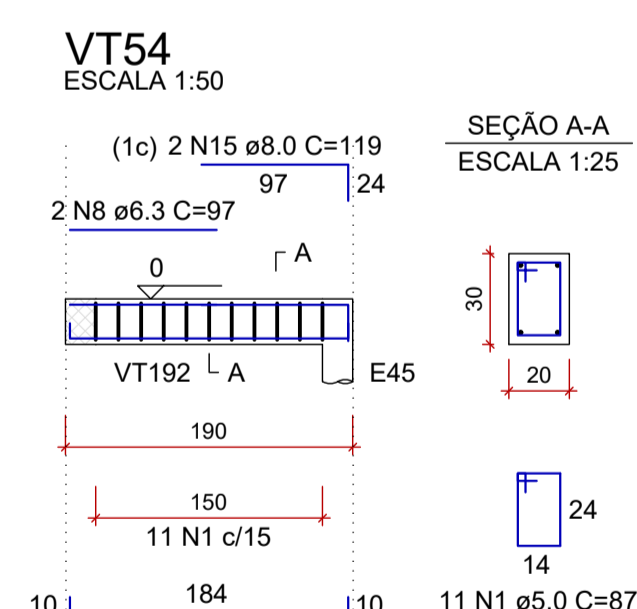
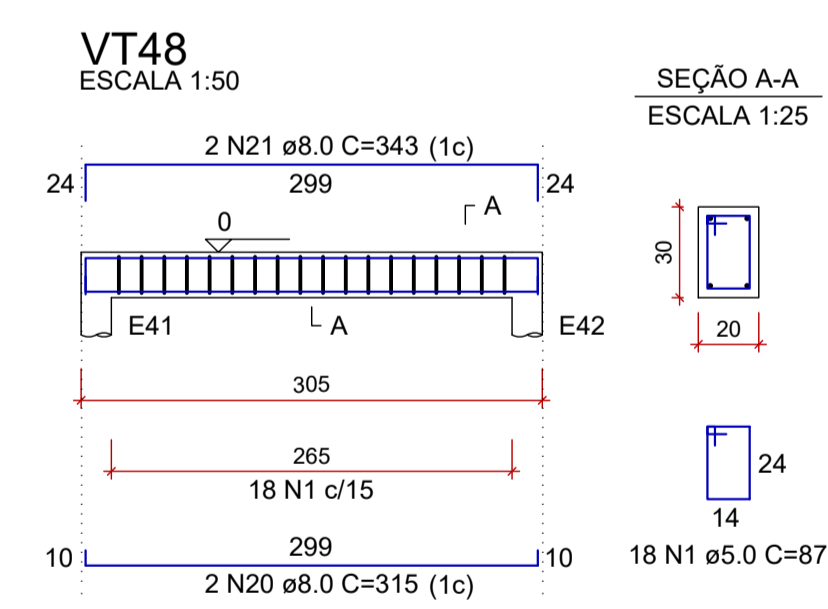
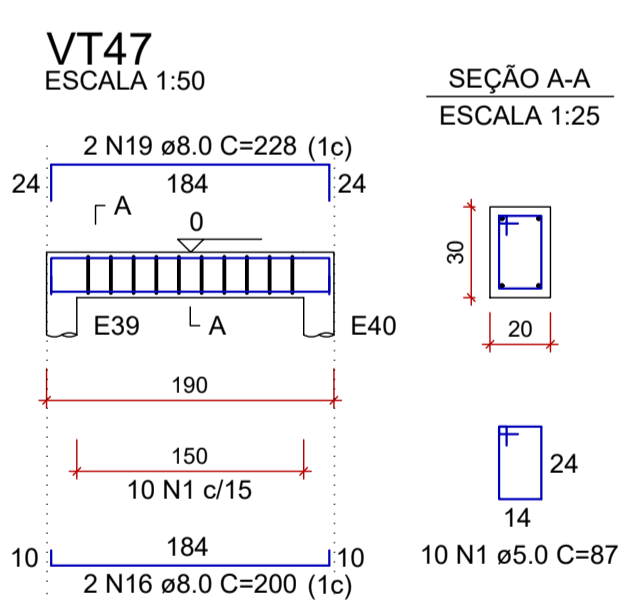
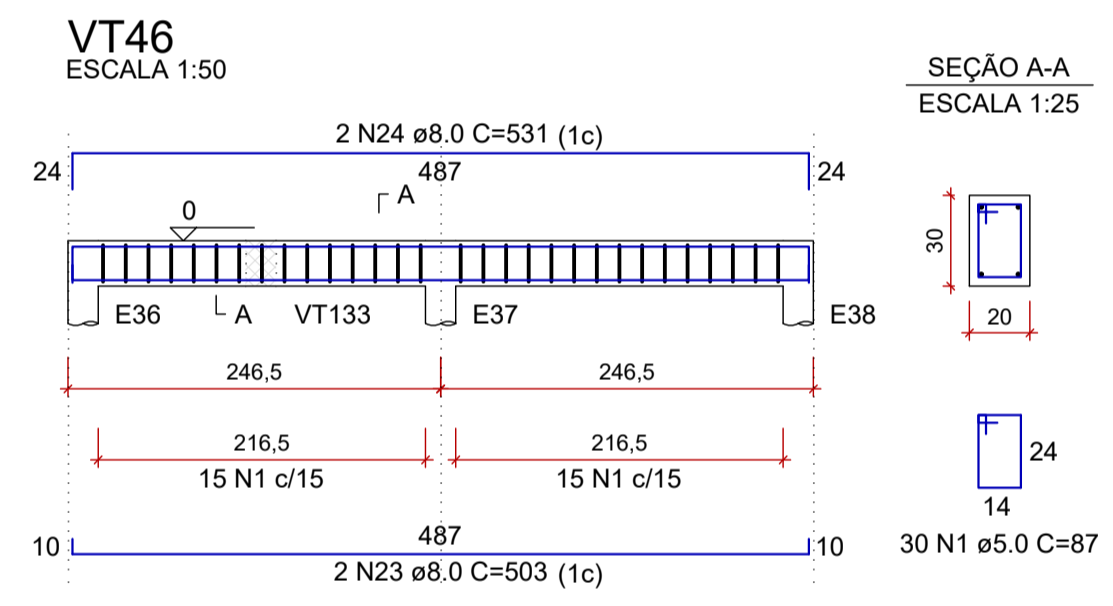
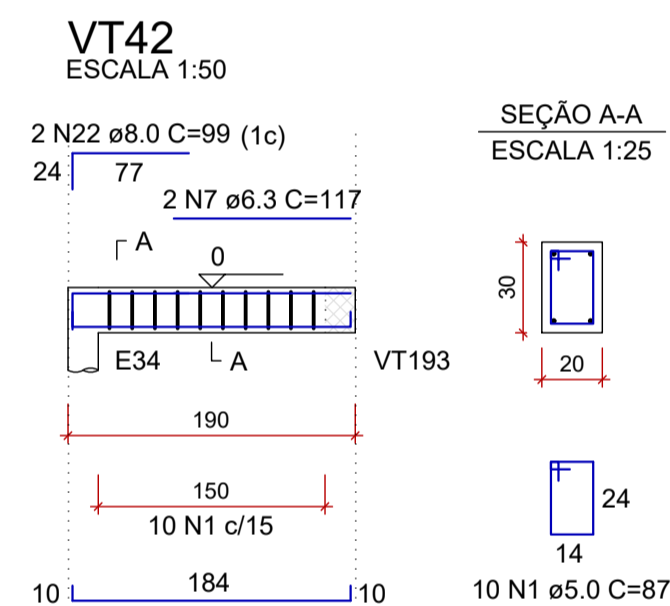
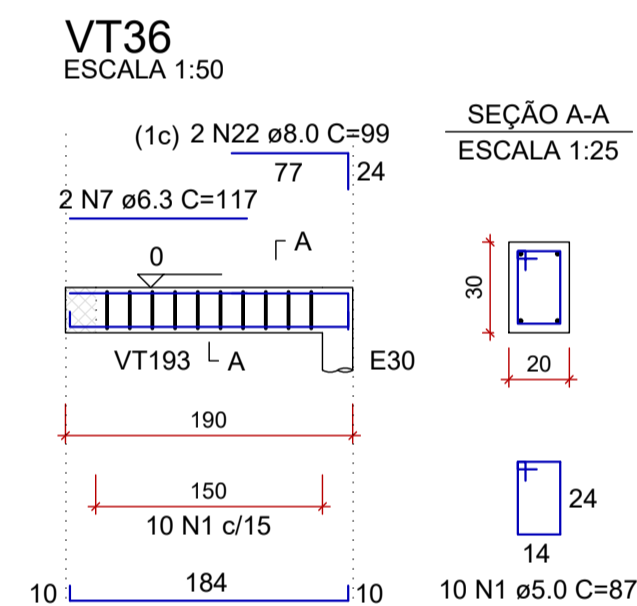
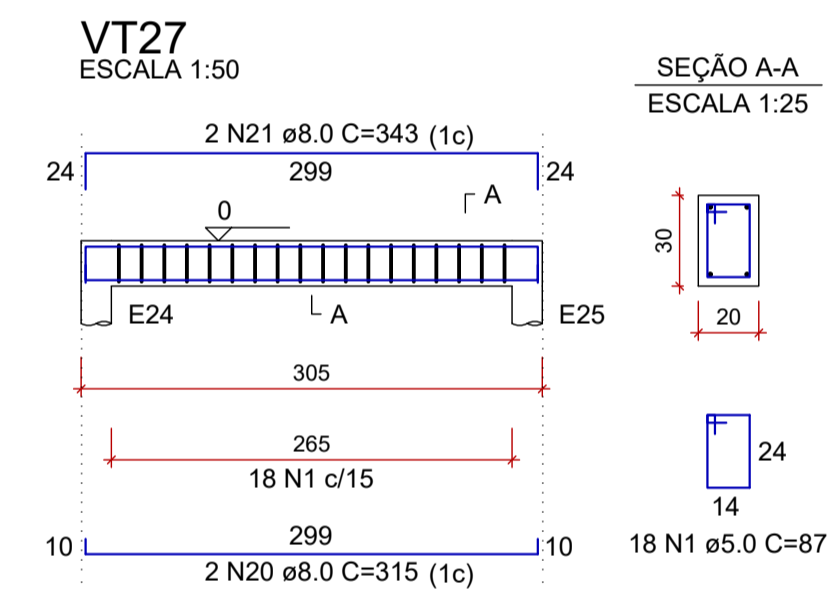
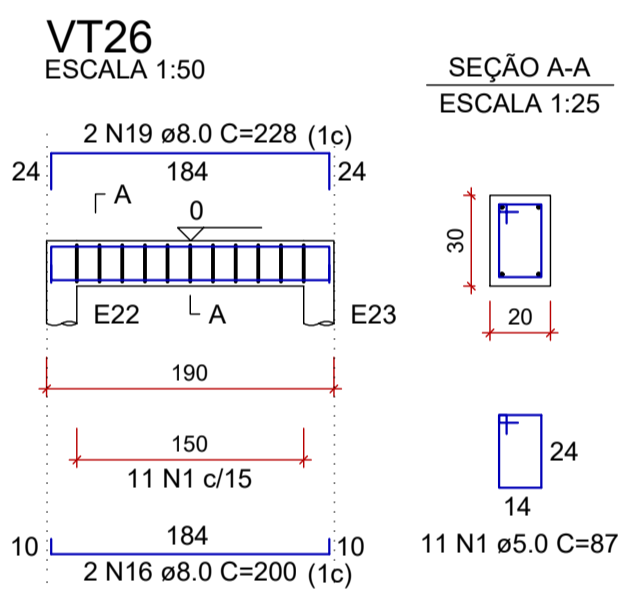
AÇO	N	DIAM (mm)	QUANT	C.UNIT (cm)	C.TOTAL (cm)
CA60	1	5.0	87		33321
CA50	2	6.3	2	262	324
	3	6.3	2	170	340
	4	6.3	2	290	580
	5	6.3	2	290	580
	6	6.3	2	102	204
	7	6.3	4	117	468
	8	6.3	2	97	194
	9	6.3	2	193	386
	10	6.3	2	79	158
	11	8.0	4	141	564
	12	8.0	4	190	760
	13	8.0	4	218	872
	14	8.0	2	360	720
	15	8.0	8	119	952
	16	8.0	14	200	2800
	17	8.0	2	114	228
	18	8.0	2	228	456
	19	8.0	4	228	912
	20	8.0	4	315	1260
	21	8.0	4	343	1372
	22	8.0	4	99	396
	23	8.0	2	503	1006
	24	8.0	2	531	1062
	25	8.0	2	285	570
	26	8.0	2	313	626
	27	8.0	2	180	360
	28	8.0	2	208	416
	29	8.0	2	560	1120
	30	8.0	2	296	592
	31	8.0	2	192	384
	32	8.0	2	129	258
	33	8.0	2	253	506
	34	8.0	2	289	578
	35	8.0	2	163	326
	36	8.0	2	191	382
	37	10.0	2	491	982
	38	10.0	8	183	1464
	39	12.5	2	588	1176
	40	12.5	2	588	1176



RESUMO DO AÇO

AÇO	DIAM (mm)	C.TOTAL (m)	PESO + 10% (kg)
CA50	6.3	34.3	9.2
	8.0	194.8	84.5
	10.0	24.5	16.6
	12.5	23.5	24.9
CA60	5.0	333.2	56.5
PESO TOTAL (kg)			
CA50		135.3	
CA60		56.5	

Volume de concreto (C-30) = 3.58 m³
Área de forma = 47.68 m²



<p>Prefeitura Municipal de Pouso Alegre</p>	
<p>PROJETO</p> <p>DAC Engenharia</p> <p>Rua Miguel Vianna, nº 81, 2º Andar Bairro Morro Chic CEP: 37500-080 - Itajubá / MG Tel: (35) 3623-8846 www.dacengenharia.com.br</p>	<p>COORDENAÇÃO</p> <p>ALÓISIO CAETANO FERREIRA</p> <p>RESPONSÁVEL TÉCNICO E AUTOR</p> <p>ENG. CIVIL FLÁVIA BARBOSA CREA-MG-187.842/D</p>
<p>EMPREENDIMENTO</p> <p>CONSTRUÇÃO DA UNIDADE DE PRONTO ATENDIMENTO</p>	
<p>ENDEREÇO</p> <p>RUA PIRANGUINHO, B. SÃO JOÃO POUSO ALEGRE - MINAS GERAIS</p> <p>ASSUNTO</p> <p>PROJETO ESTRUTURAL DETALHAMENTO DAS ARMAÇÕES VIGAS BALDRAME</p>	<p>DISCIPLINA</p> <p>ESTRUTURAL</p> <p>FASE DO PROJETO</p> <p>EXECUTIVO</p> <p>FOLHA Nº</p> <p>13/72</p>
<p>DATA INICIAL</p> <p>31/01/2023</p> <p>ESCALA</p> <p>INDICADA</p> <p>REVISÃO</p> <p>R01</p> <p>ARQUIVO</p> <p>DAC-PMPA-UPA-PE-EST-R02.DWG</p>	