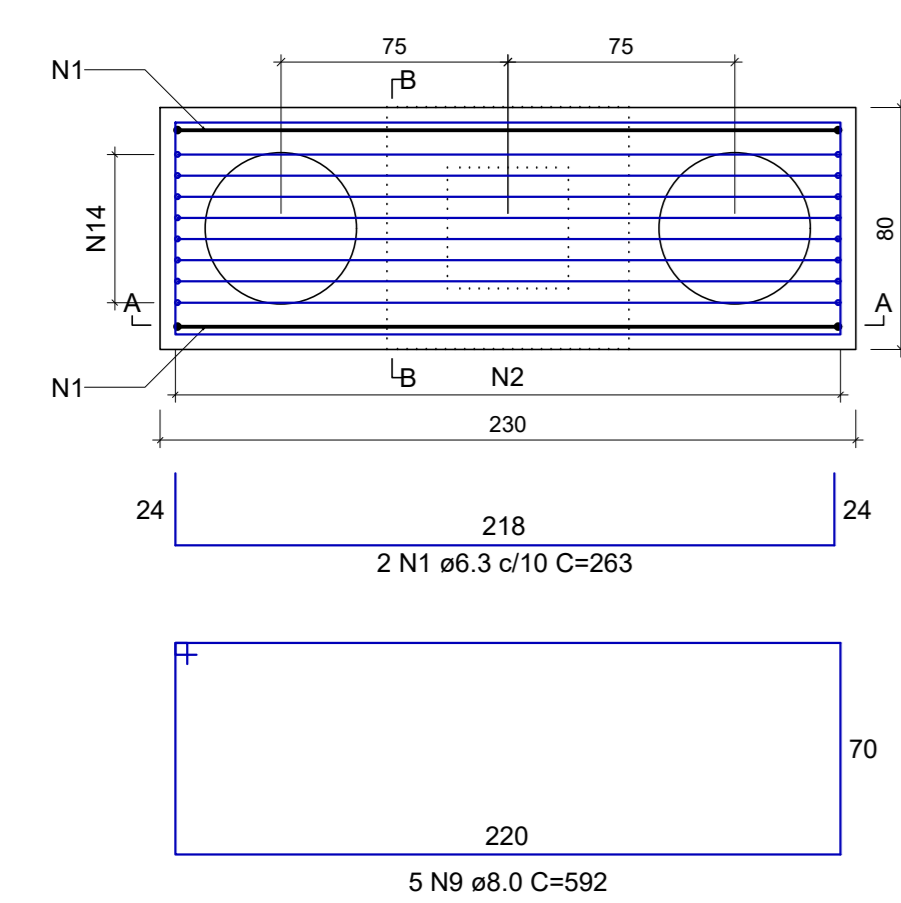
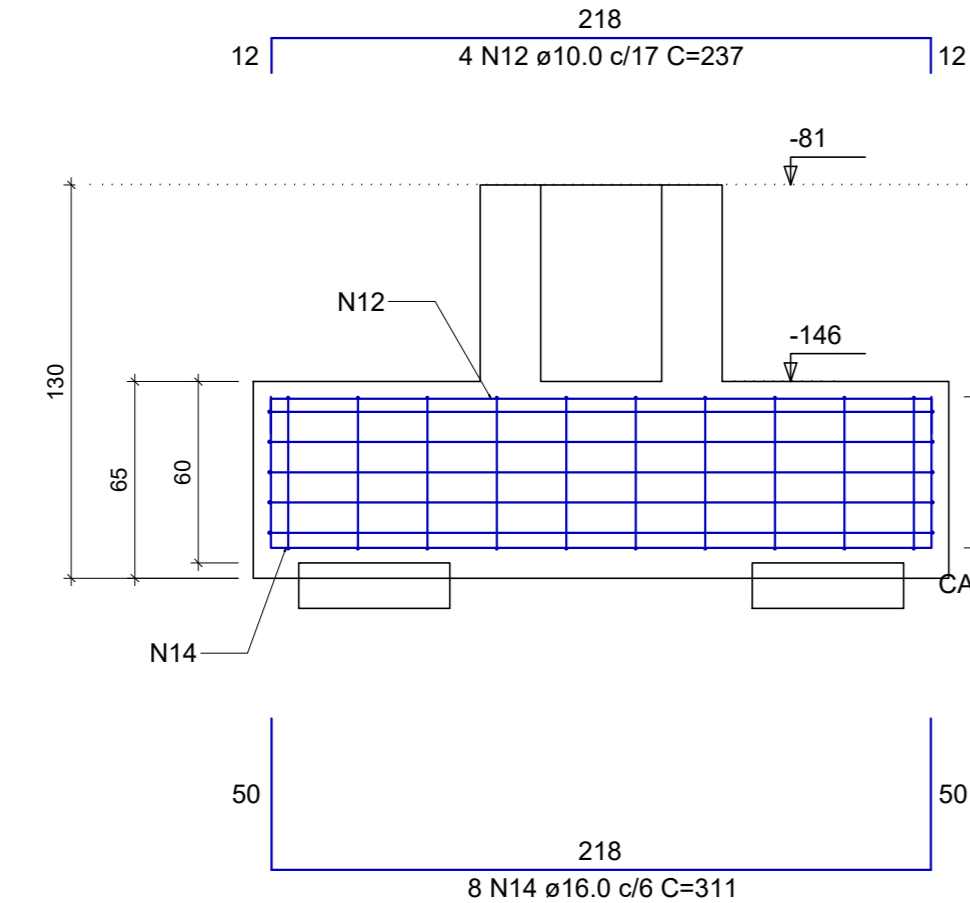


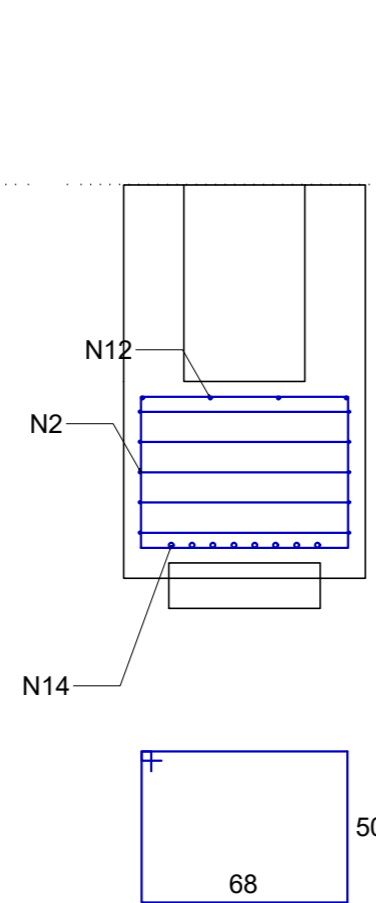
B15=B19
2x50
PLANTA
ESCALA 1:25



CORTE A-A
ESCALA 1:25

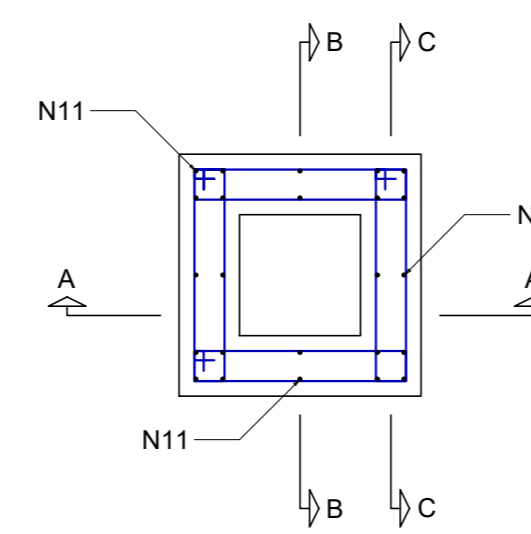
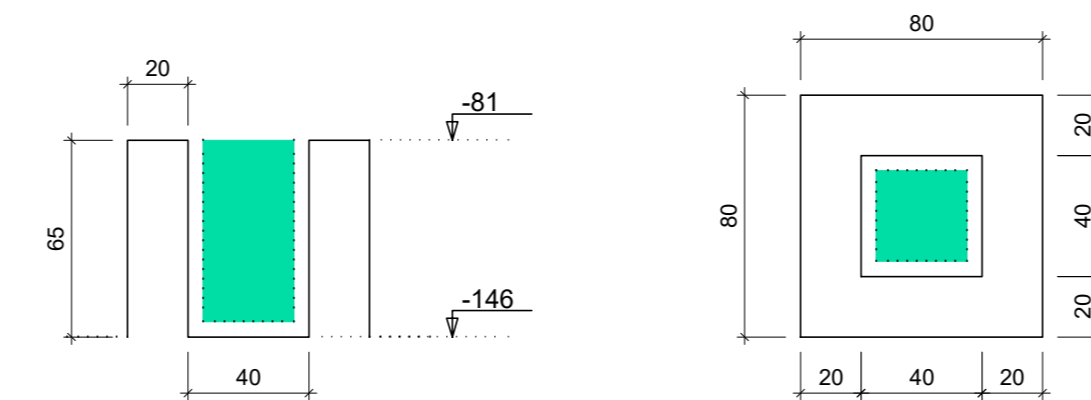


CORTE B-B
ESCALA 1:25

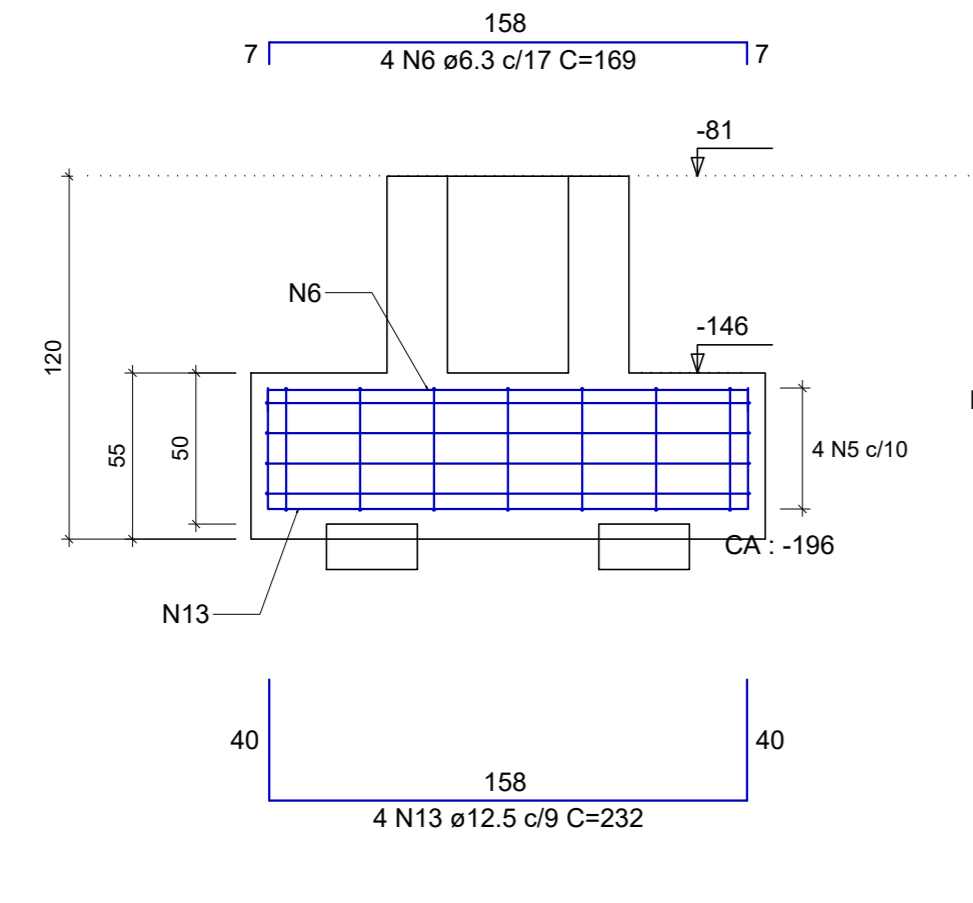


Cálce (P14=P18)

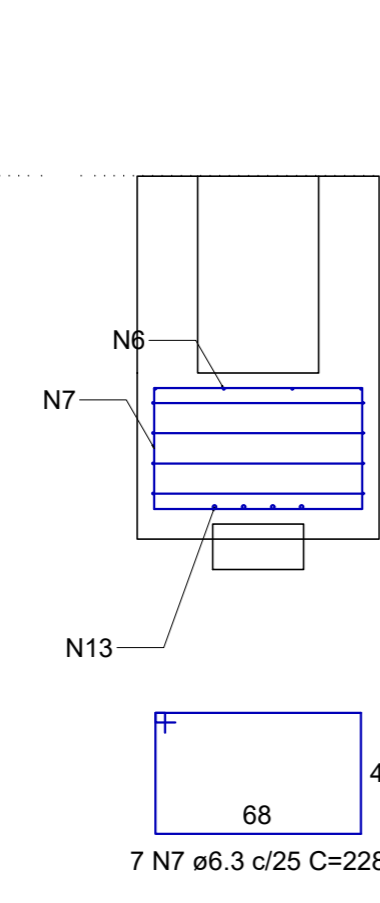
ESC 1:25



CORTE A-A
ESCALA 1:25

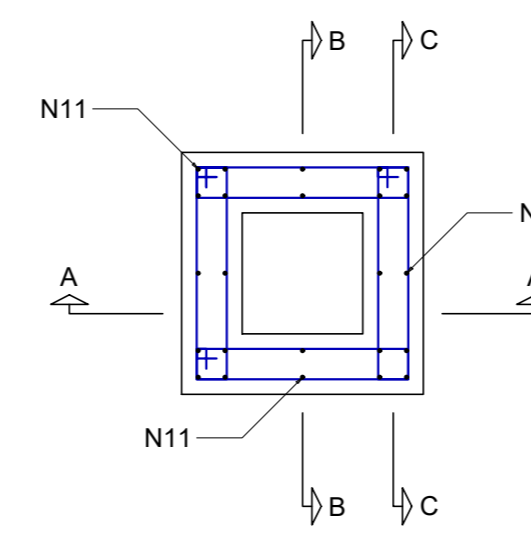
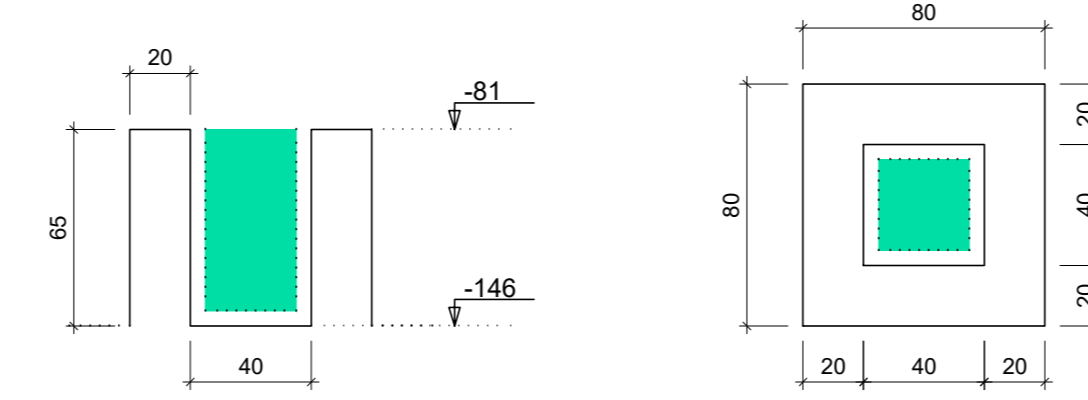


CORTE B-B
ESCALA 1:25

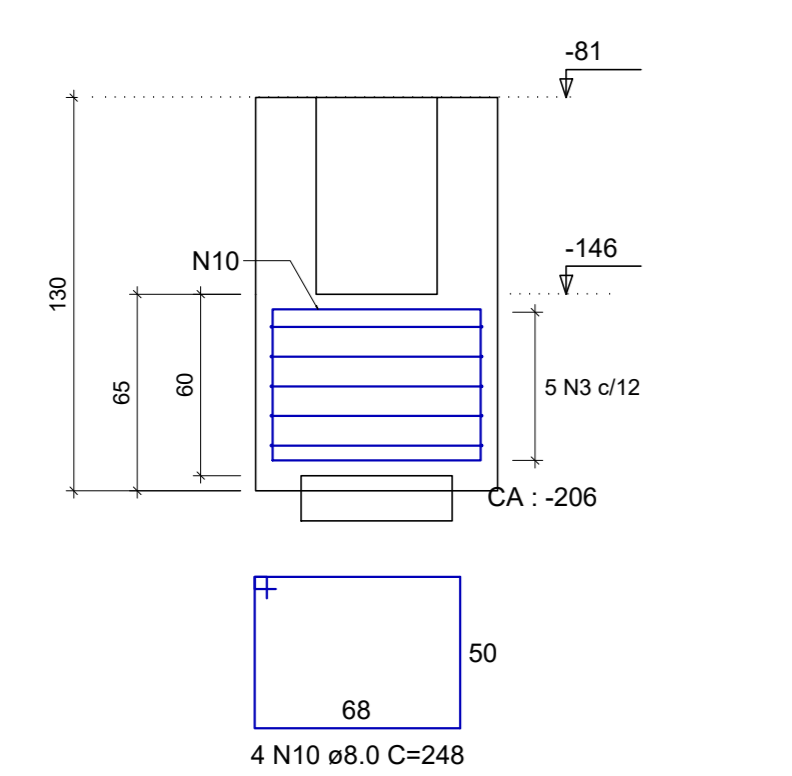


Cálce (P15=P19)

ESC 1:25

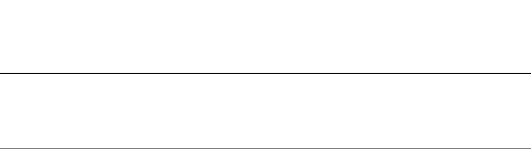
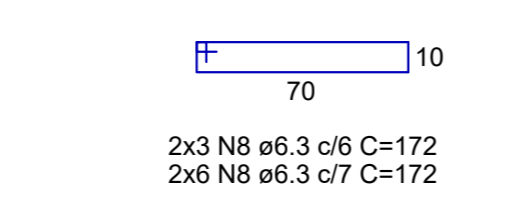
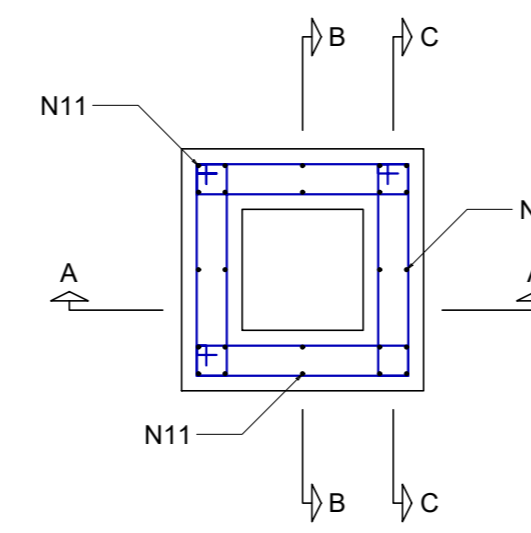
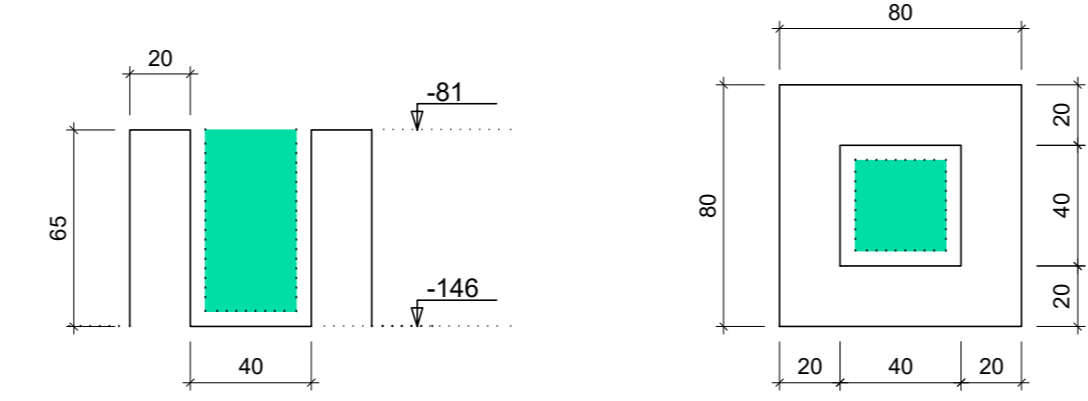


CORTE
ESCALA 1:25



Cálce (P22=P23=P52)

ESC 1:25



RELAÇÃO DO AÇO

2xB19	2xCálce P18	3xB52	2xCálce P19	7xB74	3xCálce P52
AÇO	N	DIAM (mm)	QUANT	C.UNIT (cm)	C.TOTAL (cm)
CA50	1	6.3	4	263	1052
	2	6.3	20	248	4960
	3	6.3	15	292	4380
	4	6.3	14	203	2842
	5	6.3	28	472	13216
	6	6.3	28	169	4732
	7	6.3	49	228	11172
	8	6.3	252	172	43344
	9	8.0	10	592	5920
	10	8.0	12	248	2976
	11	8.0	42	484	20328
	12	10.0	8	237	1896
	13	12.5	20	232	4640
	14	16.0	16	311	4976

RESUMO DO AÇO

AÇO	DIAM (mm)	C.TOTAL (m)	PESO + 10% (kg)
CA50	6.3	857	230.7
	8.0	292.2	126.8
	10.0	19	12.9
	12.5	65	88.8
	16.0	49.8	86.4
PESO TOTAL (kg)			525.6

Volume de concreto (C-25) = 12.50 m³
Área de forma = 77.23 m²

PROJETO	COORDENAÇÃO	ALDORE GATTINGO HERRERA
REVISÃO	RESPONSÁVEL TÉCNICO E AUTOR	ENR. CIVIL FLAVIA BARBOSA
CLIENTE	CREA MG 187/2020	
 <p>Prefeitura Municipal de Pouso Alegre</p>		
 <p>DAC Engenharia</p> <p>Rua Miguel Vianna, nº 81, 2º Andar Bairro Monte Cristo CEP: 37502-000 - Itajubá / MG Tel: (35) 3623-8946 www.dacengenharia.com.br</p>		
<p>EMPENHAMENTO</p> <p>CONSTRUÇÃO DO CENTRO DE ATENÇÃO PSICOSSOCIAL</p>		
DISCIPLINA	ESTRUTURAL	
FASE DO PROJETO	EXECUTIVO	
FOLHA Nº	04/41	
DATA INICIAL	ESCALA	REVISÃO
31/01/2023	INDICADA	R01
ARQUIVO	DAC-PIPA-CAPS-PE-EST-R01.DWG	