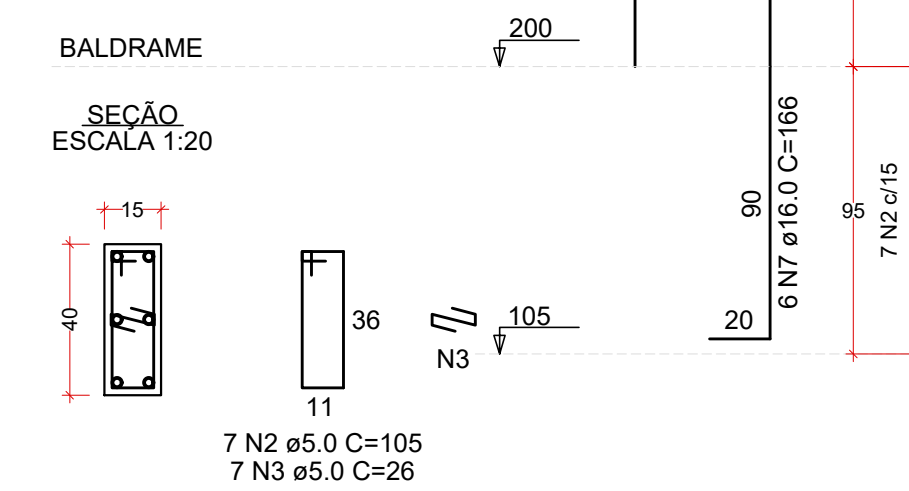
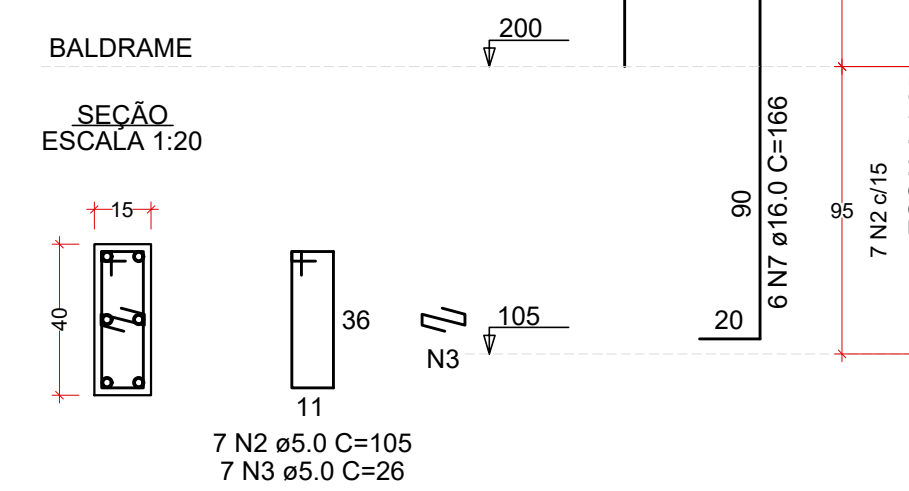
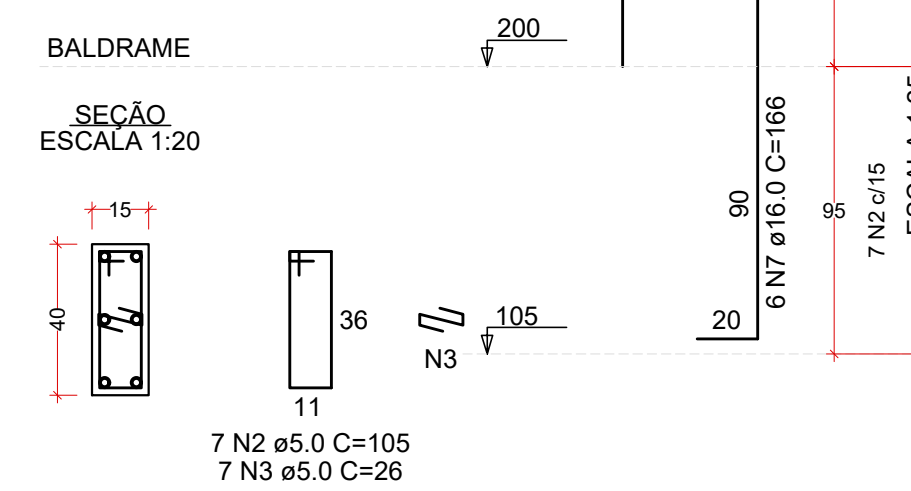
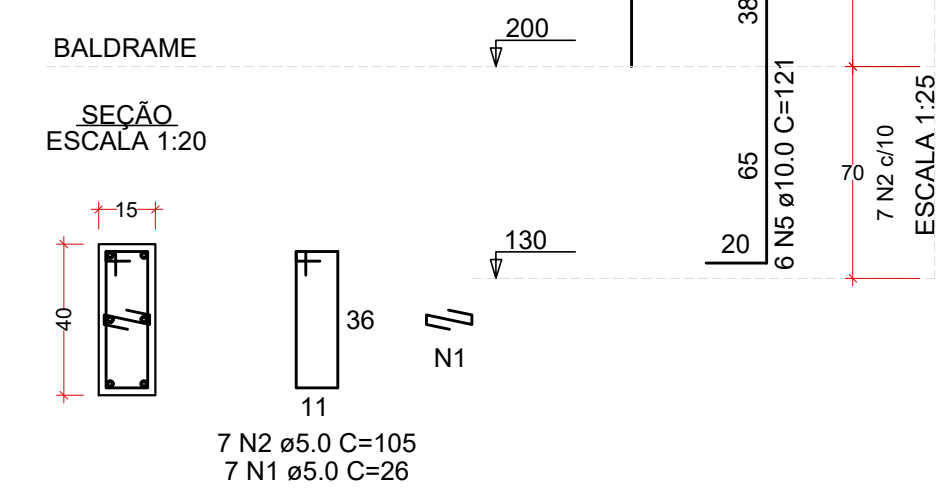
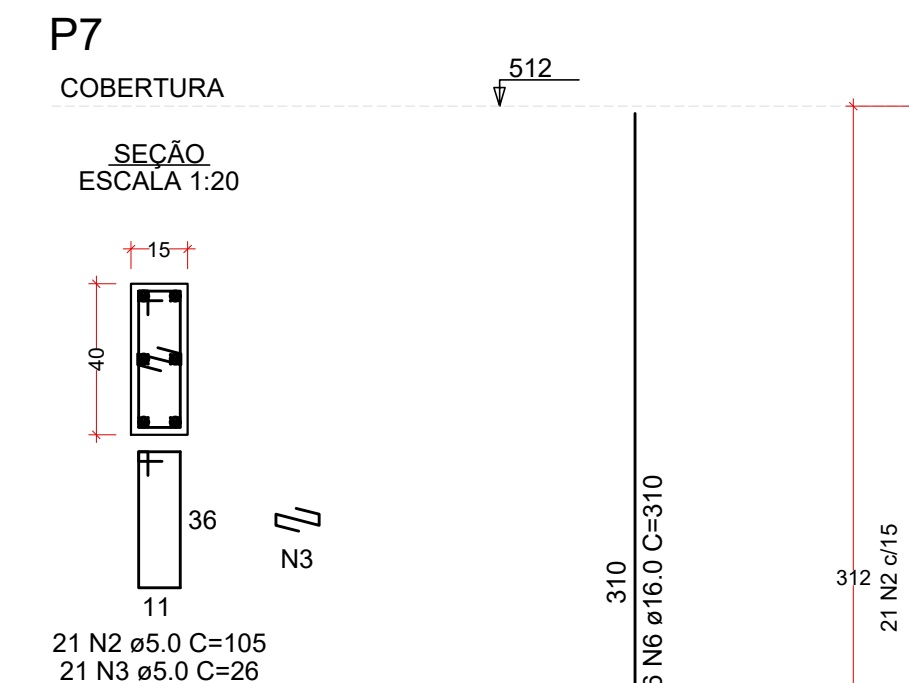
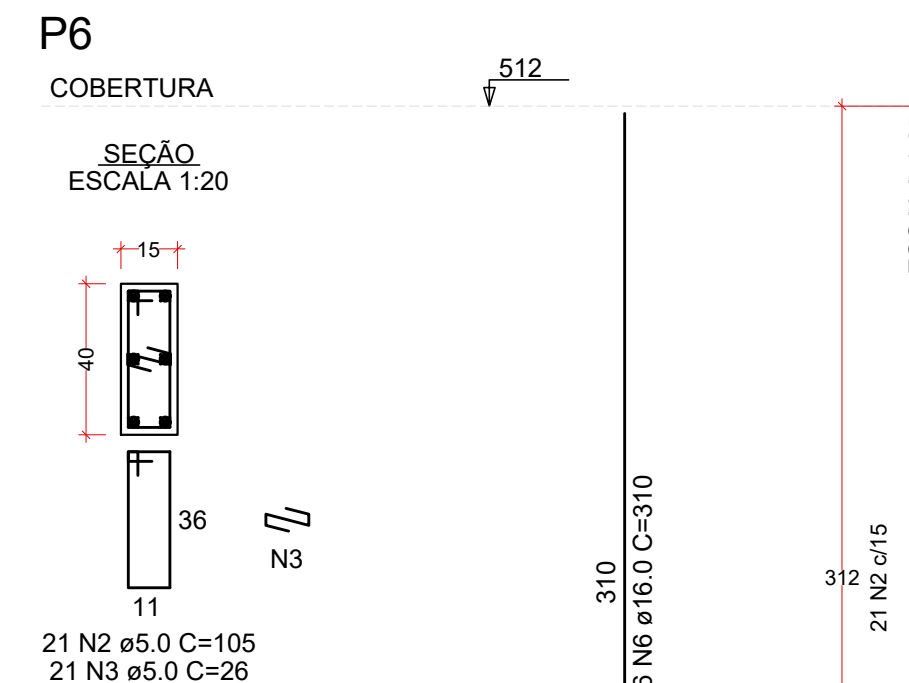
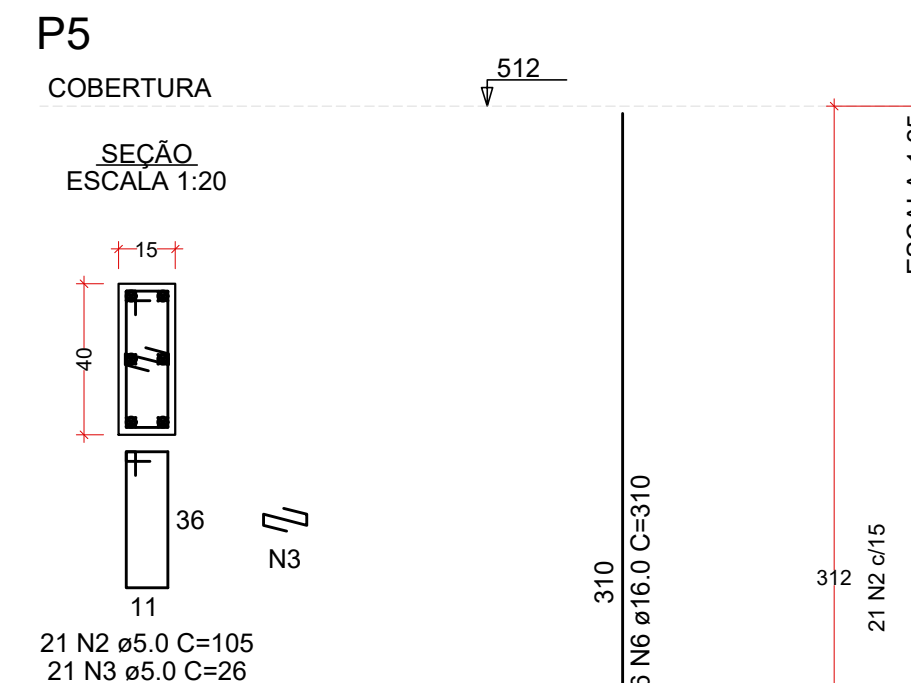
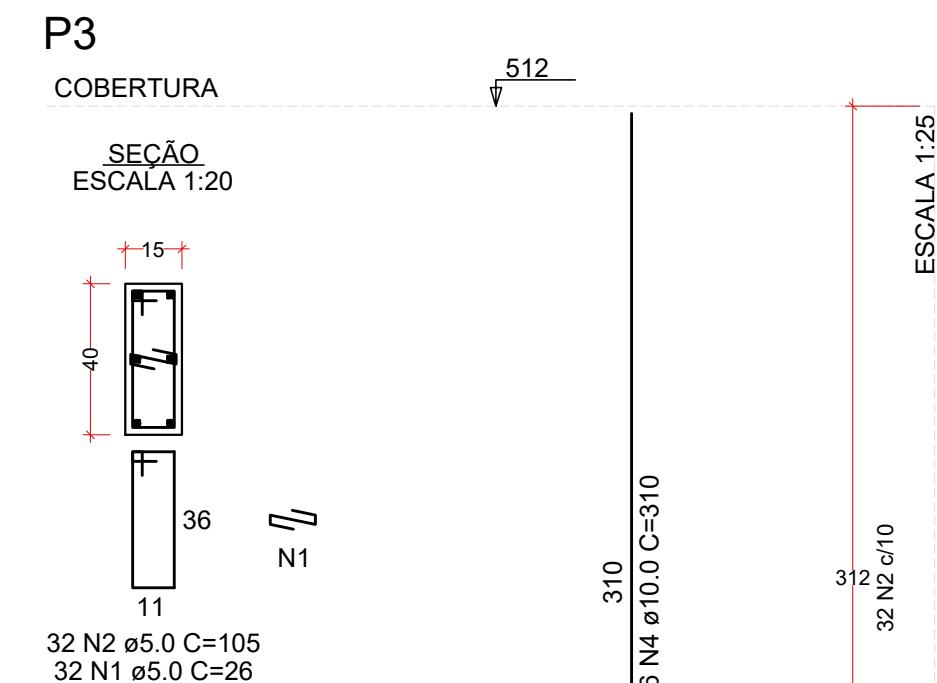
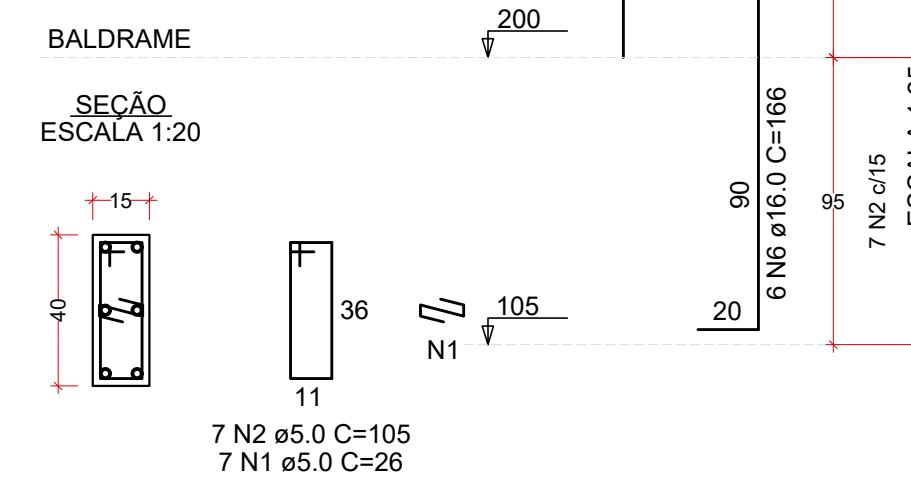
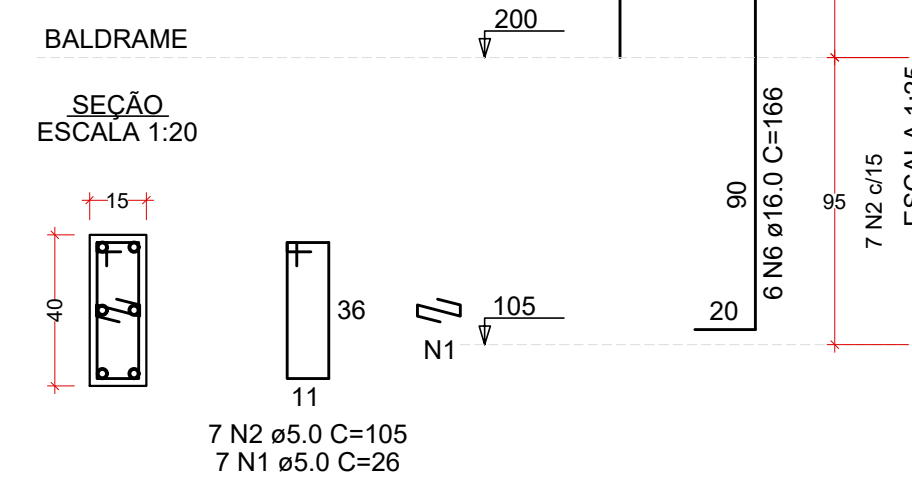
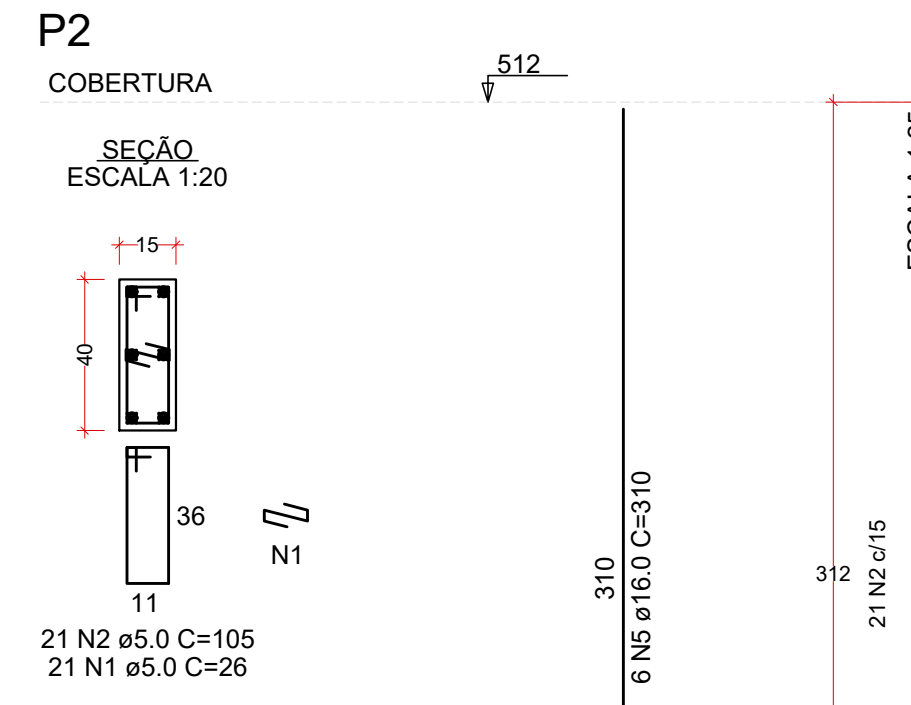
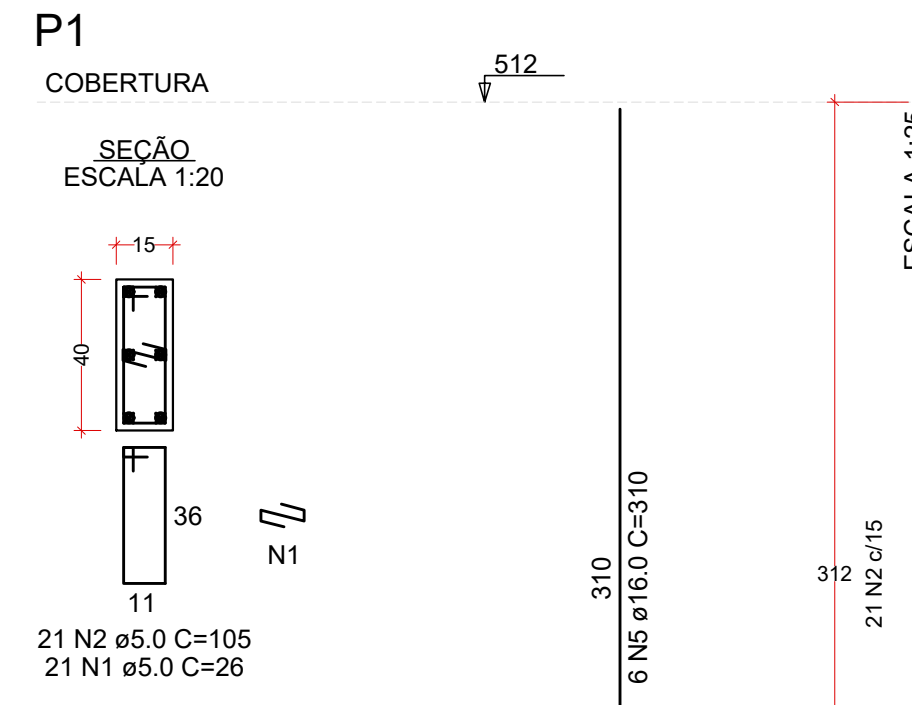
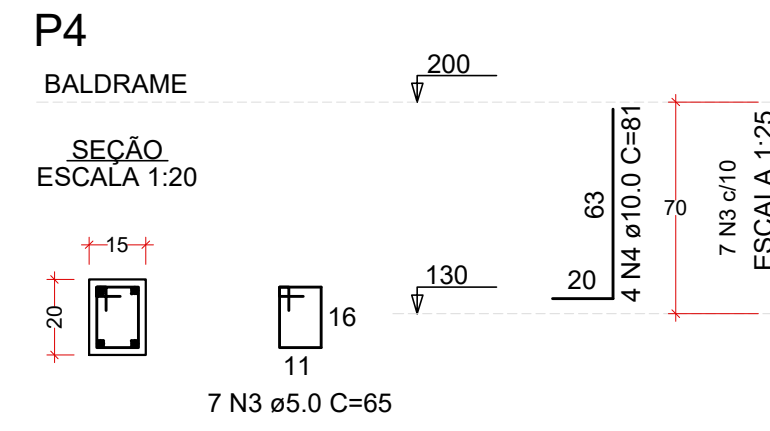


PROJETO ESTRUTURAL - CONSTRUÇÃO DA UNIDADE DE PRONTO ATENDIMENTO
ESCALA INDICADA



RELAÇÃO DO AÇO

AÇO	N	DIAM (mm)	QUANT	C.UNIT (cm)	C.TOTAL (cm)
CA60	1	5.0	56	26	1456
	2	5.0	56	105	5880
	3	5.0	7	65	455
CA50	4	10.0	4	81	324
	5	16.0	12	310	3720
	6	16.0	12	166	1992

RESUMO DO AÇO

AÇO	DIAM (mm)	C.TOTAL (m)	PESO + 10% (kg)
CA50	10.0	3.2	2.2
CA60	16.0	57.1	99.2
	5.0	77.9	13.2
PESO TOTAL (kg)			
CA50		101.4	
CA60		13.2	

Volume de concreto (C-25) = 0.42 m³
Área de forma = 7.73 m²

RELAÇÃO DO AÇO

AÇO	N	DIAM (mm)	QUANT	C.UNIT (cm)	C.TOTAL (cm)
CA60	1	5.0	39	26	1014
	2	5.0	123	105	12915
	3	5.0	84	26	2184
CA50	4	10.0	6	310	1860
	5	10.0	6	121	726
	6	16.0	18	310	5580
	7	16.0	18	166	2988

RESUMO DO AÇO

AÇO	DIAM (mm)	C.TOTAL (m)	PESO + 10% (kg)
CA50	10.0	25.9	17.5
CA60	16.0	85.7	148.8
	5.0	161.1	27.3
PESO TOTAL (kg)			
CA50		166.3	
CA60		27.3	

Volume de concreto (C-25) = 0.82 m³
Área de forma = 15.05 m²

REV. 01	28/04/23	CONFORME SOLICITAÇÕES DA VIGILANCIA SANITÁRIA	DAC
REV. 00	31/01/2023	EMIÇÃO INICIAL	DAC
REVISÃO	DATA	DESCRIÇÃO	RESP.



DAC Engenharia
Rua Miguel Vianna, nº 81, 2º Andar
Bairro Morro Chic
CEP: 37500-080 - Itajubá / MG
Tel: (35) 3623-8846
www.dacengenharia.com.br

COORDENAÇÃO
ALOISIO CAETANO FERREIRA

RESPONSÁVEL TÉCNICO E AUTOR
ENGRª CIVIL FLÁVIA CRISTINA BARBOSA CREA-MG-187.842/D

CONSTRUÇÃO DA UNIDADE DE PRONTO ATENDIMENTO

ENDEREÇO RUA PIRANGUINHO, B. SÃO JOÃO POUSO ALEGRE - MINAS GERAIS	DISCIPLINA ESTRUTURAL
ASSUNTO PROJETO ESTRUTURAL DE CONCRETO ARMADO DETALHAMENTO DOS PILARES	FASE DO PROJETO EXECUTIVO
DATA INICIAL 31/01/2023	FOLHA Nº 03/05

REVISÃO: R01 | ARQUIVO: DAC-PMPA-UPA-PE-EST-EC1-R01.DWG