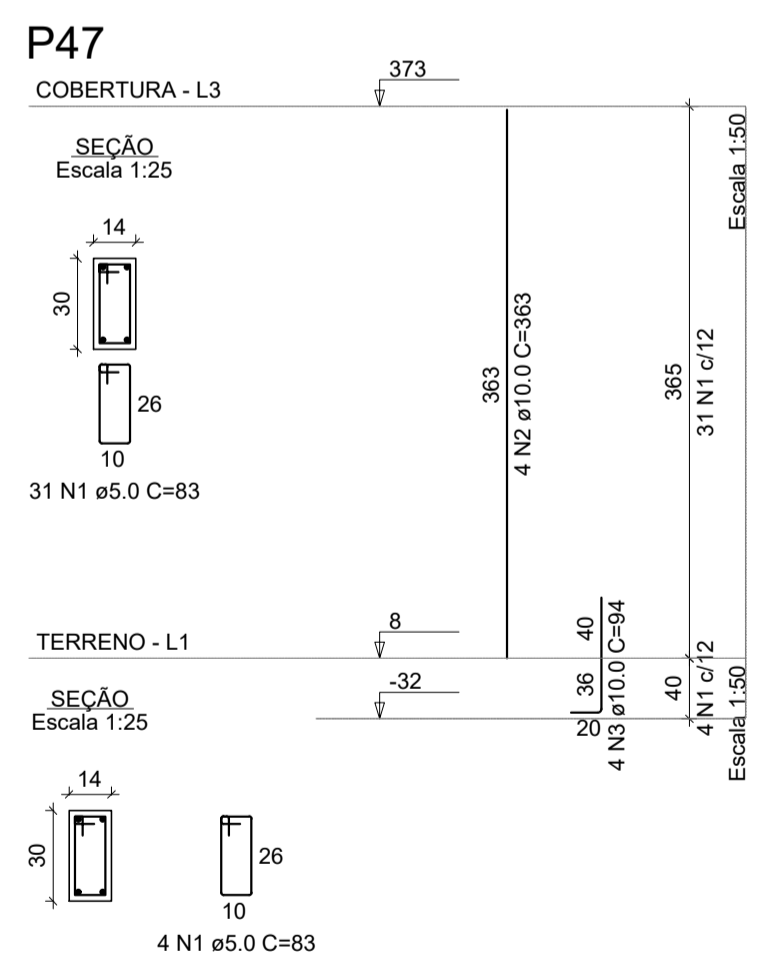
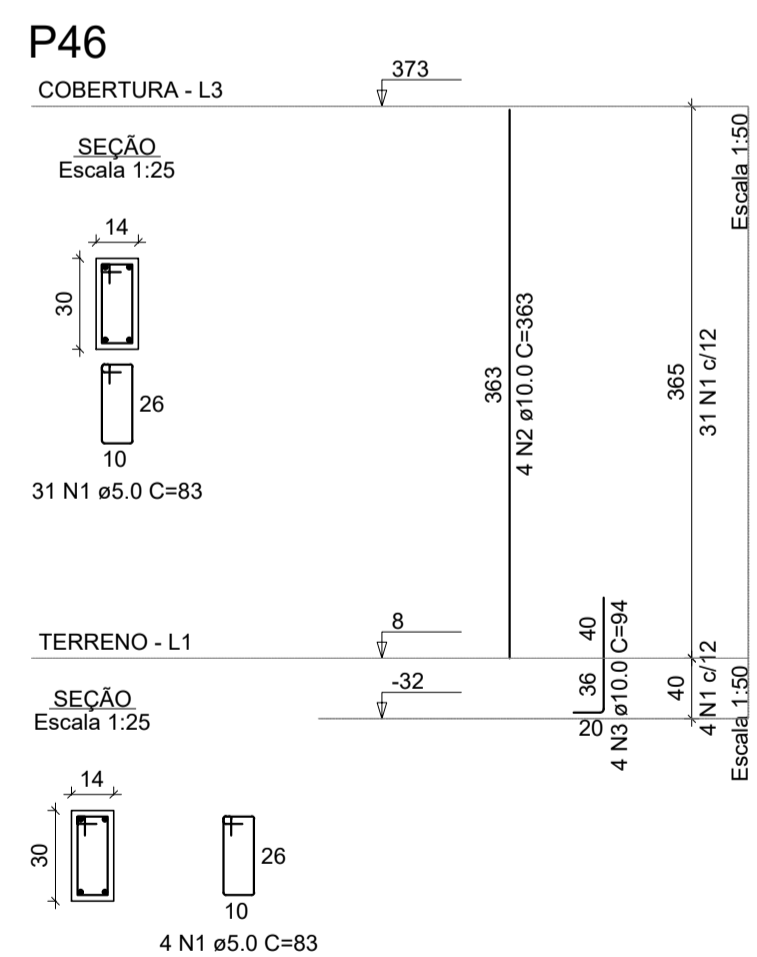
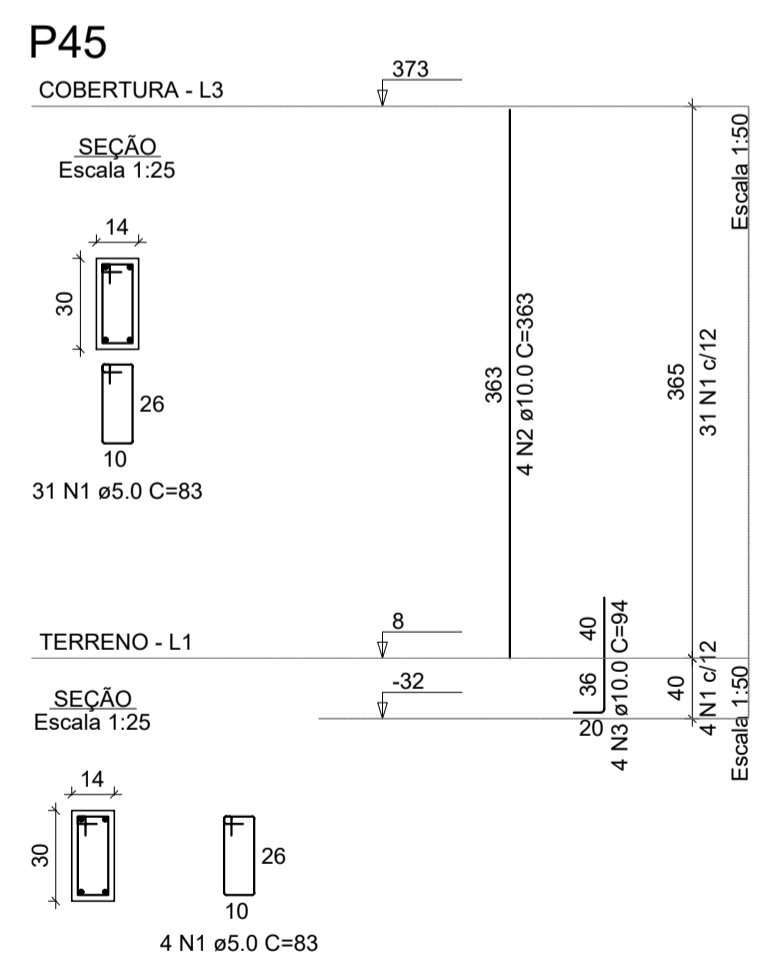
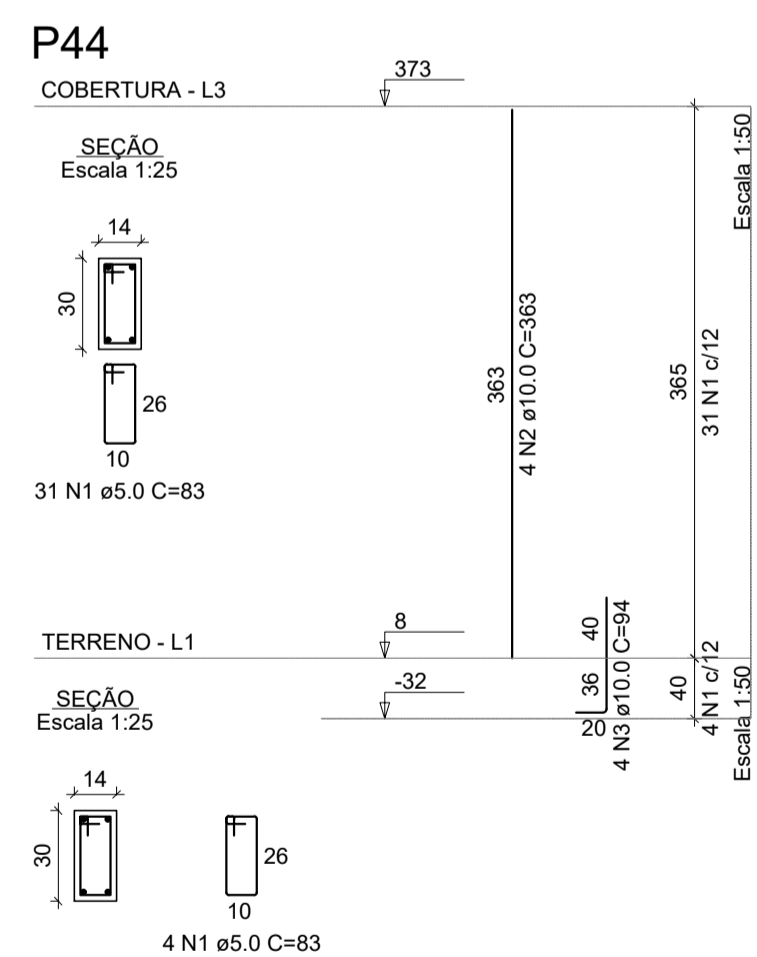
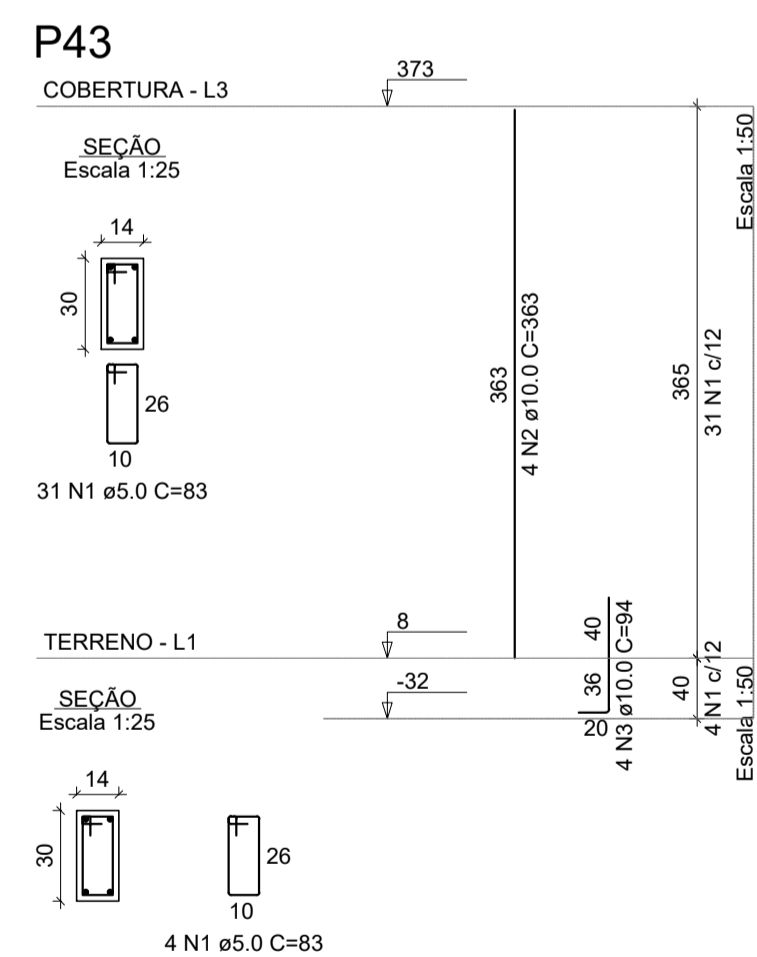
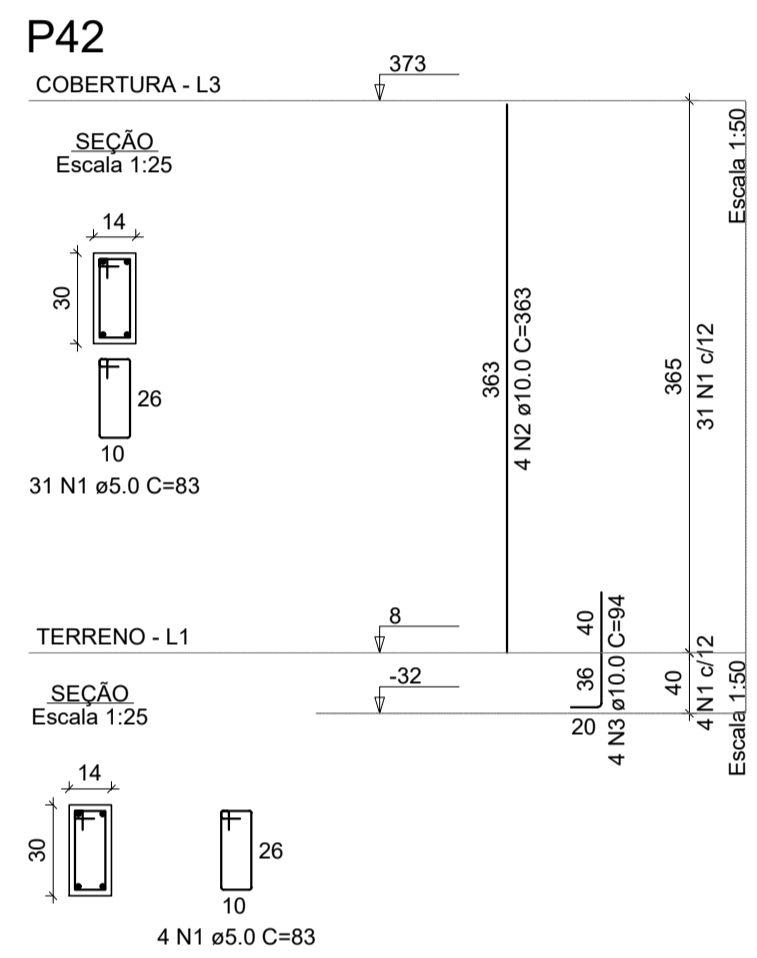
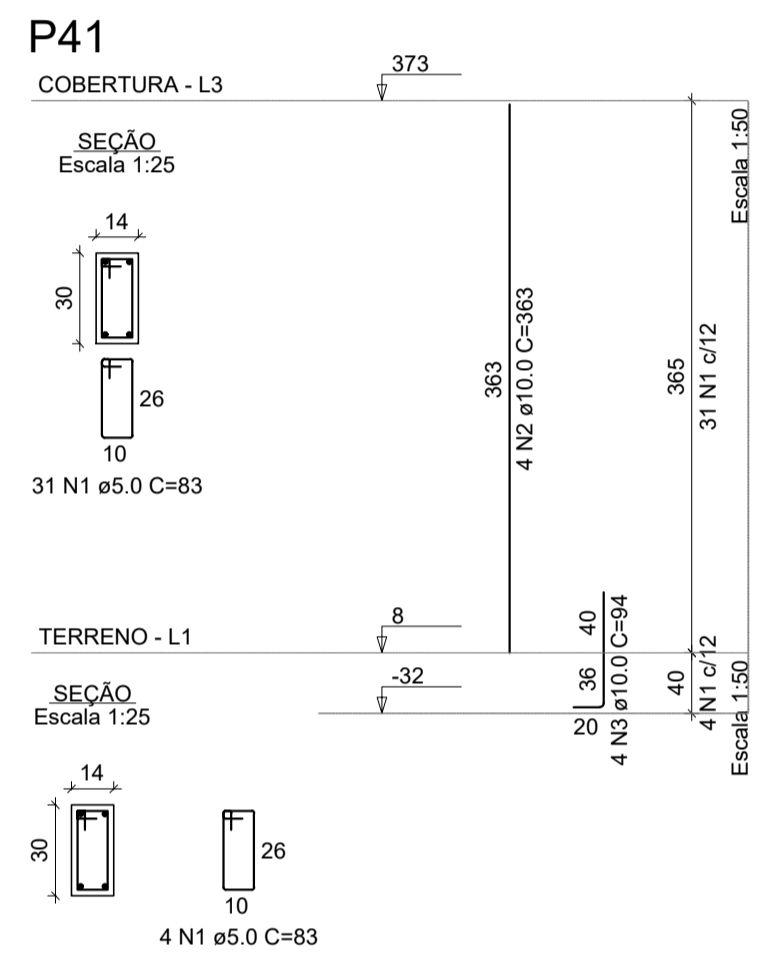
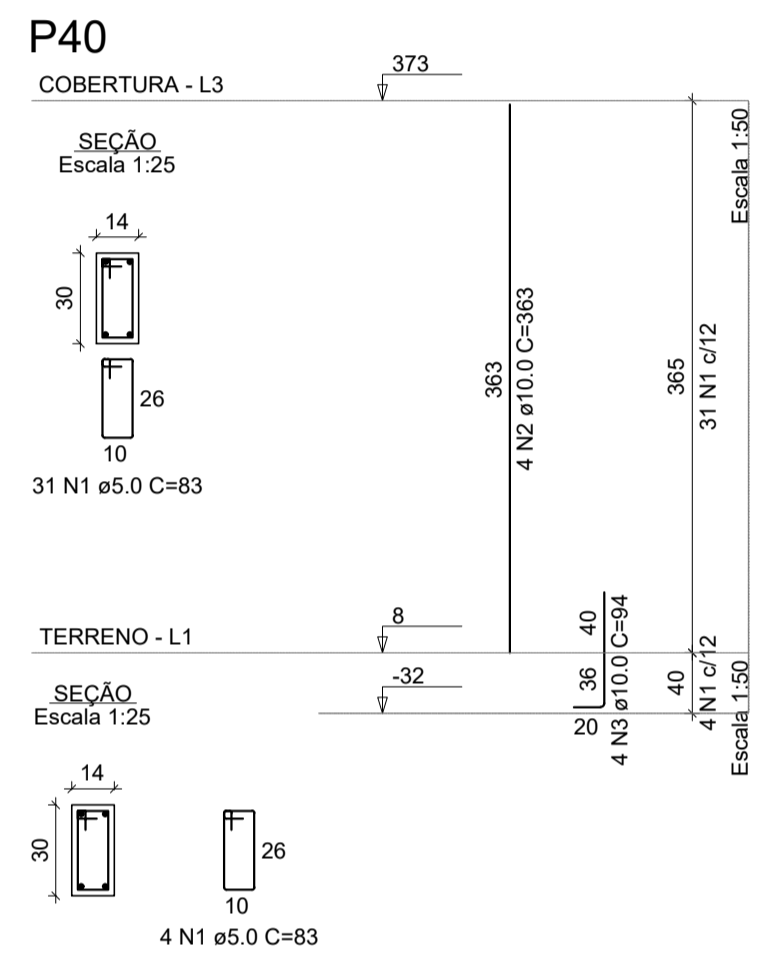
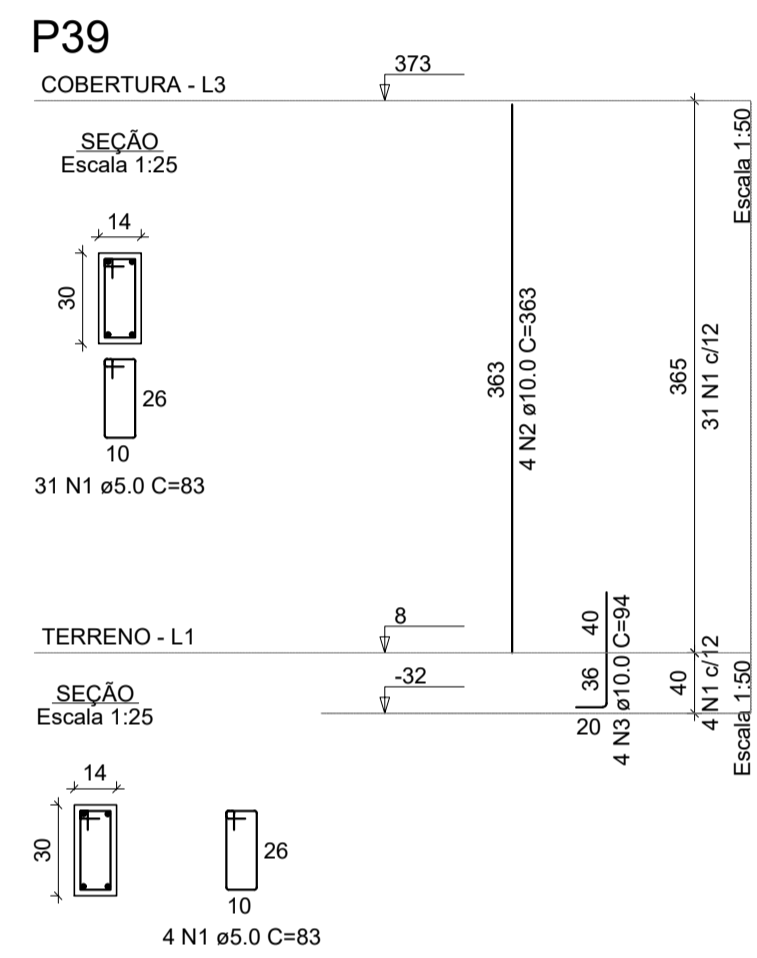
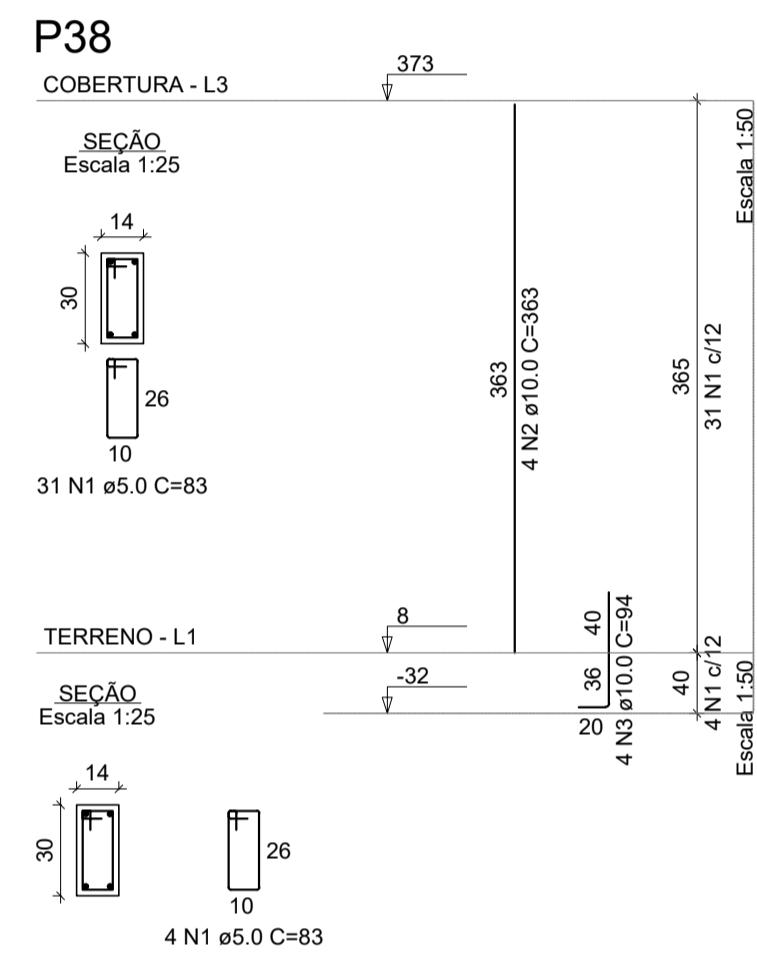
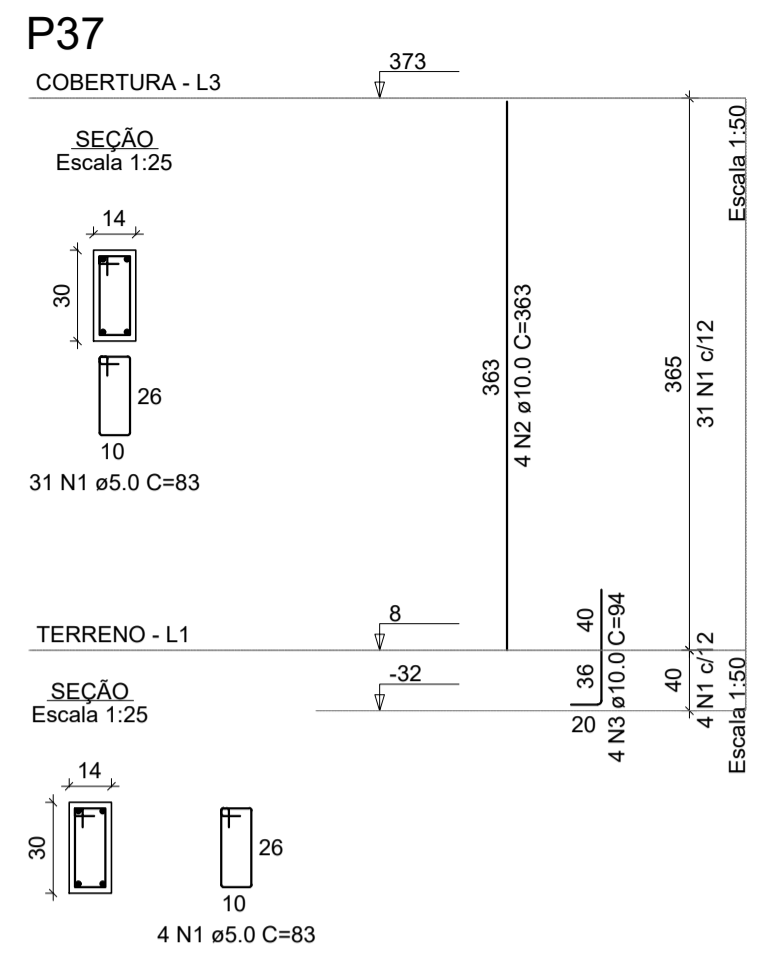
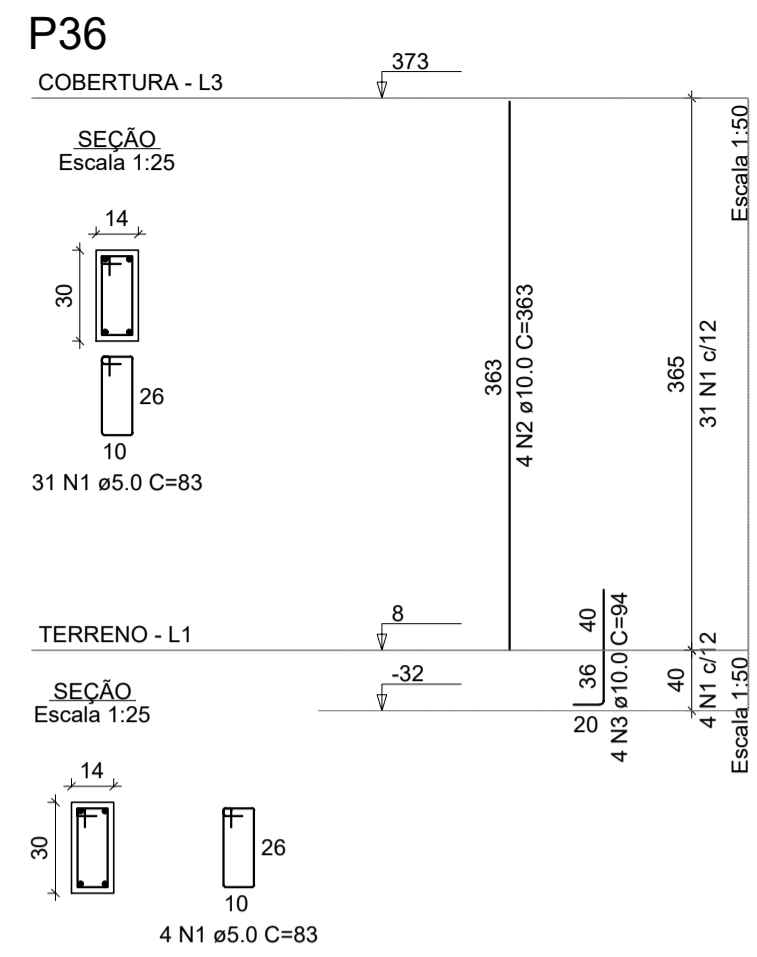
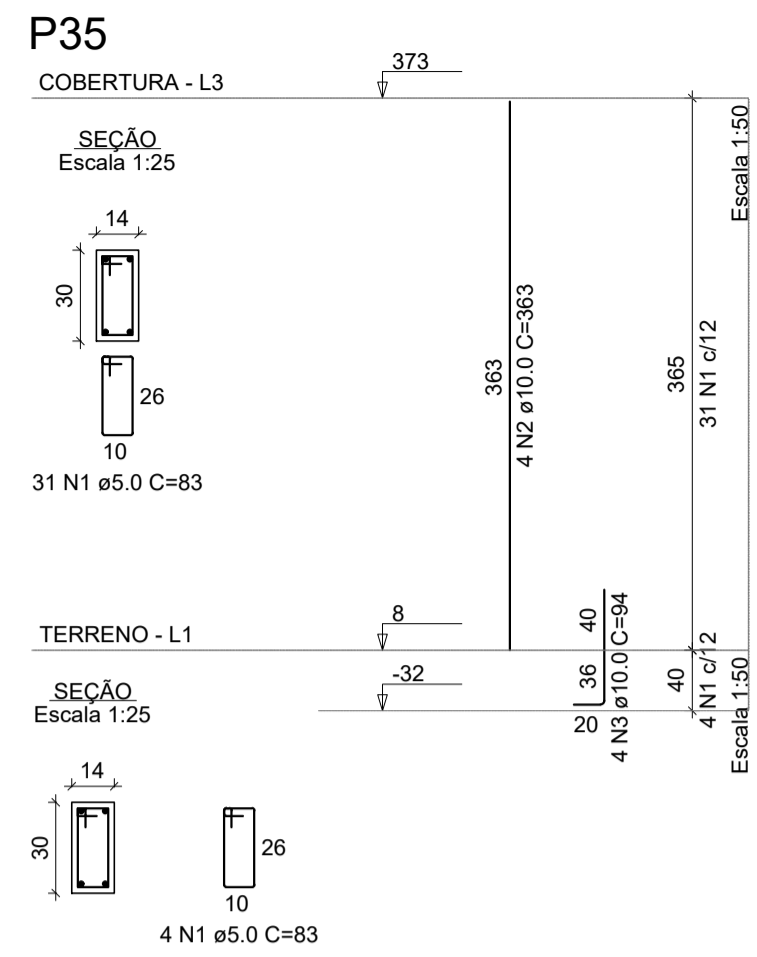
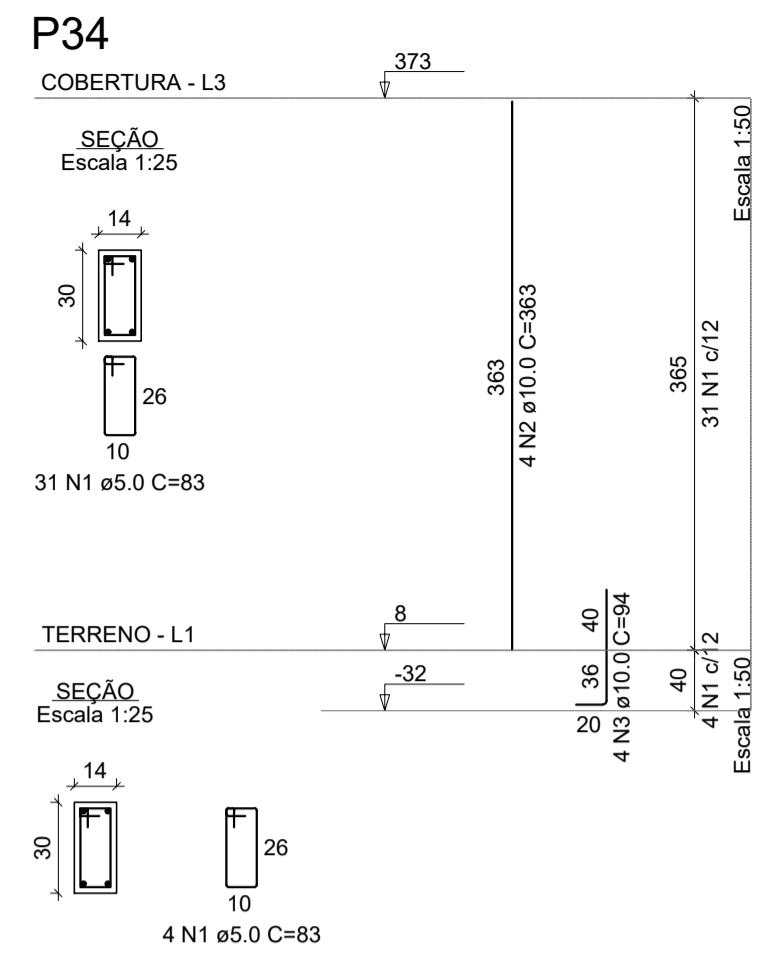
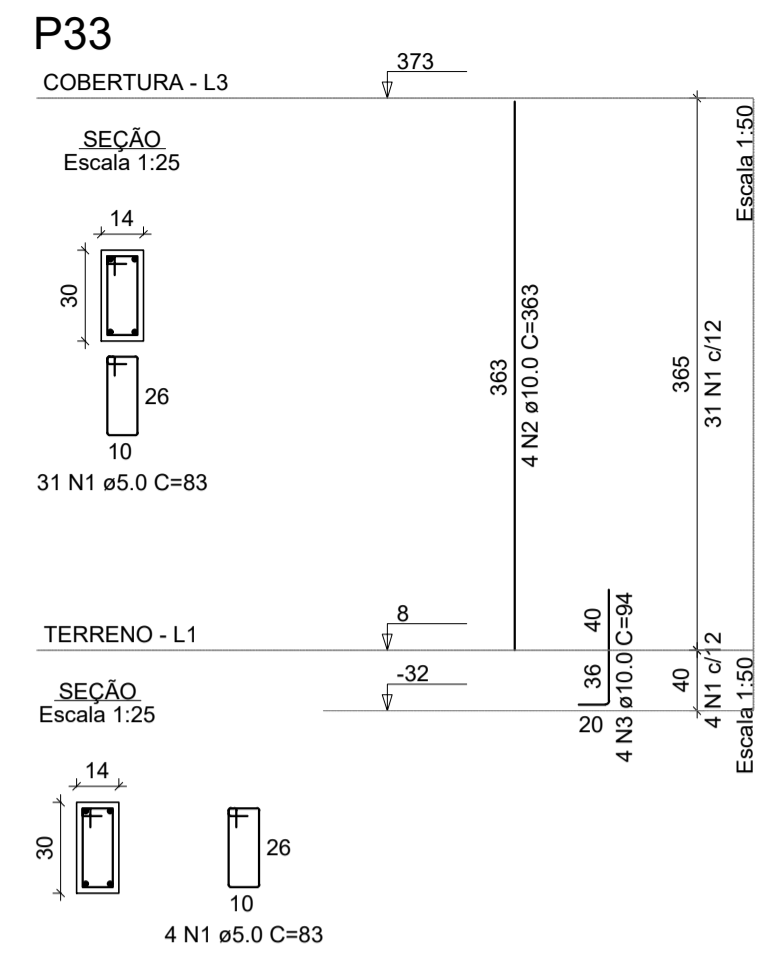


**PROJETO ESTRUTURAL - CONSTRUÇÃO DA UBS VERGANI**

Escala indicada



RELAÇÃO DO AÇO

AÇO	N	DIAM (mm)	QUANT	C.UNIT (cm)	C.TOTAL (cm)
CA50	1	5.0	525	83	43575
CA60	2	10.0	60	363	21780
CA60	3	10.0	60	94	5640

RESUMO DO AÇO

AÇO	DIAM (mm)	C.TOTAL (m)	PESO + 10% (kg)
CA50	10.0	274.2	186
CA60	5.0	435.8	73.9
PESO TOTAL (kg)			
CA50			186
CA60			73.9

Volume de concreto (C-30) = 2.55 m³  
Área de forma = 53.46 m²

REV. 00	27/08/21	EMISSÃO INICIAL	DAC
REVISÃO	DATA	DESCRIÇÃO	RESP.
		GERÊNCIA DE PROJETOS PEDRO HENRIQUE JUSTINIANO ENO CIVIL COORDENAÇÃO DE PROJETOS ALOISIO CAETANO FERREIRA CREA-MG-97.132/D RESPONSÁVEL TÉCNICO ENO FLÁVIA CRISTINA BARBOSA CREA-MG-187.842/D PROJETO WILLIAM BARADEL LARI DESENHO WILLIAM BARADEL LARI	
EMPREENDIMENTO <b>CONSTRUÇÃO DA UBS VERGANI</b>			
ENDEREÇO AV. JOÃO FERREIRA DE FREITAS, BAIRRO VERGANI POUSO ALEGRE - MINAS GERAIS		DISCIPLINA <b>ESTRUTURAL</b>	
ASSUNTO PROJETO ESTRUTURAL EM CONCRETO ARMADO DETALHAMENTO DOS PILARES		FASE DO PROJETO <b>EXECUTIVO</b>	
DATA INICIAL 02/08/2021		ESCALA INDICADA	
REVISÃO R00		ARQUIVO DAC-PMPA-VER-EST-PE-R00.DWG	
		FOLHA Nº. <b>08/20</b>	