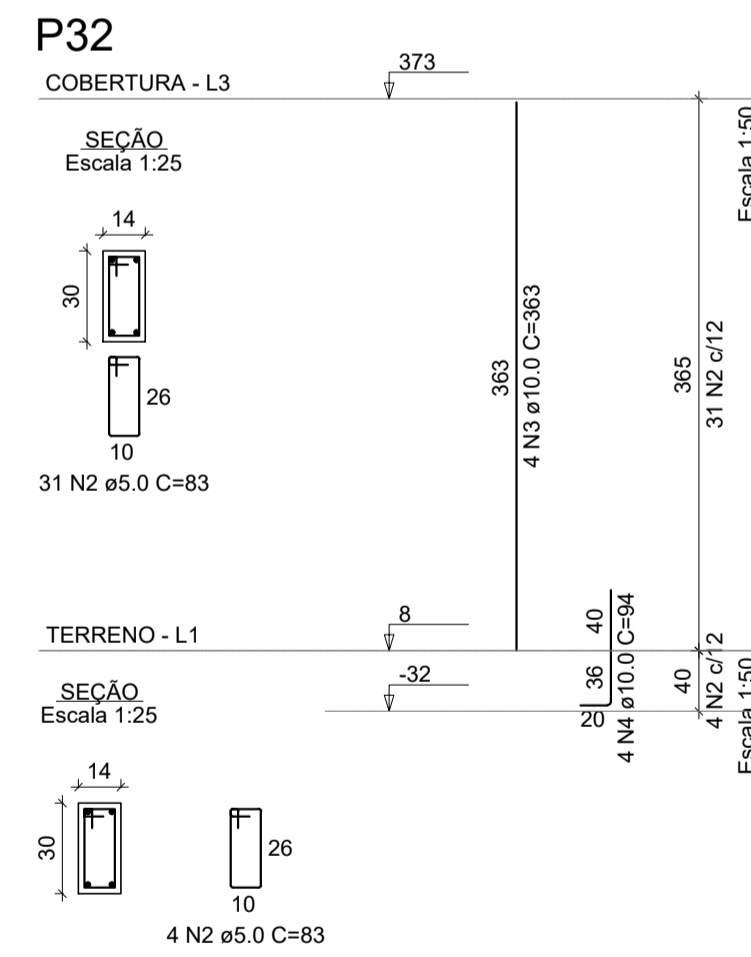
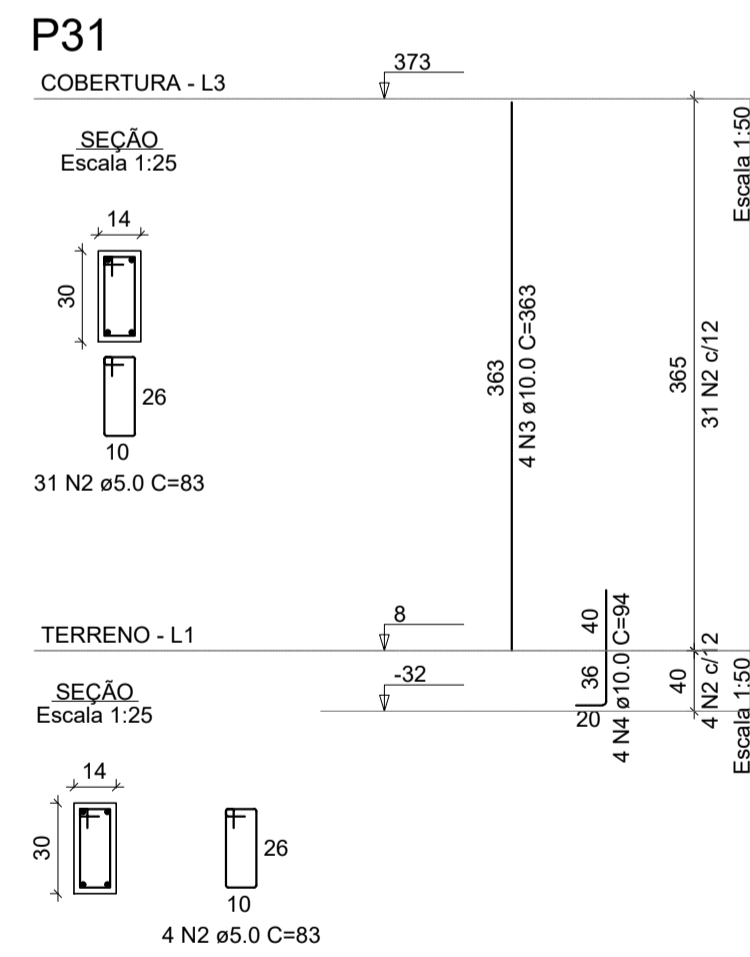
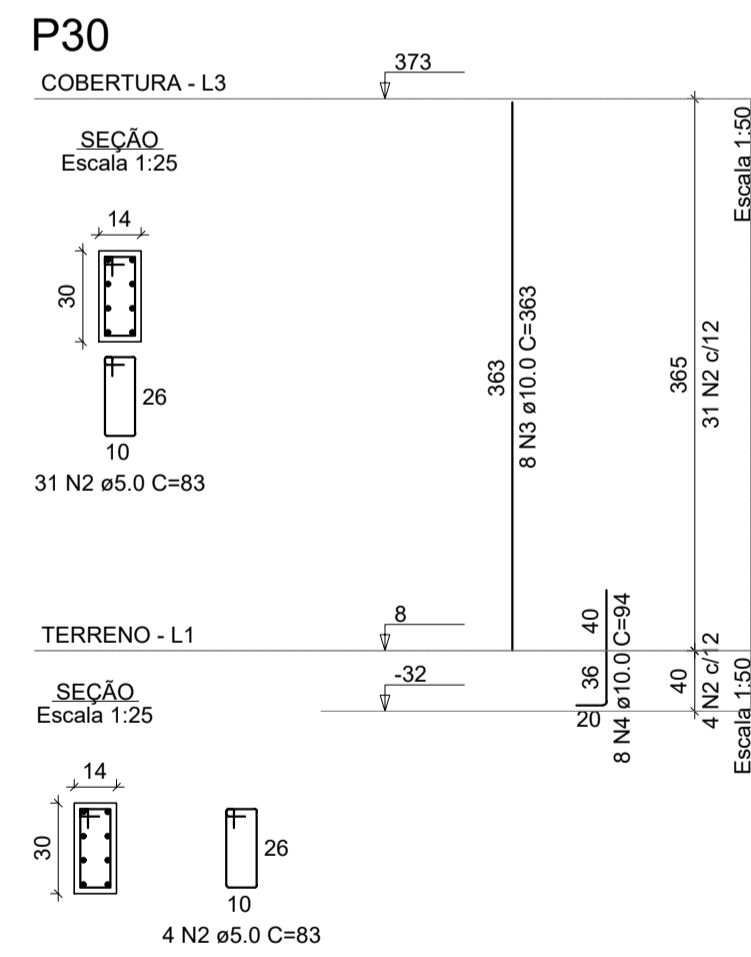
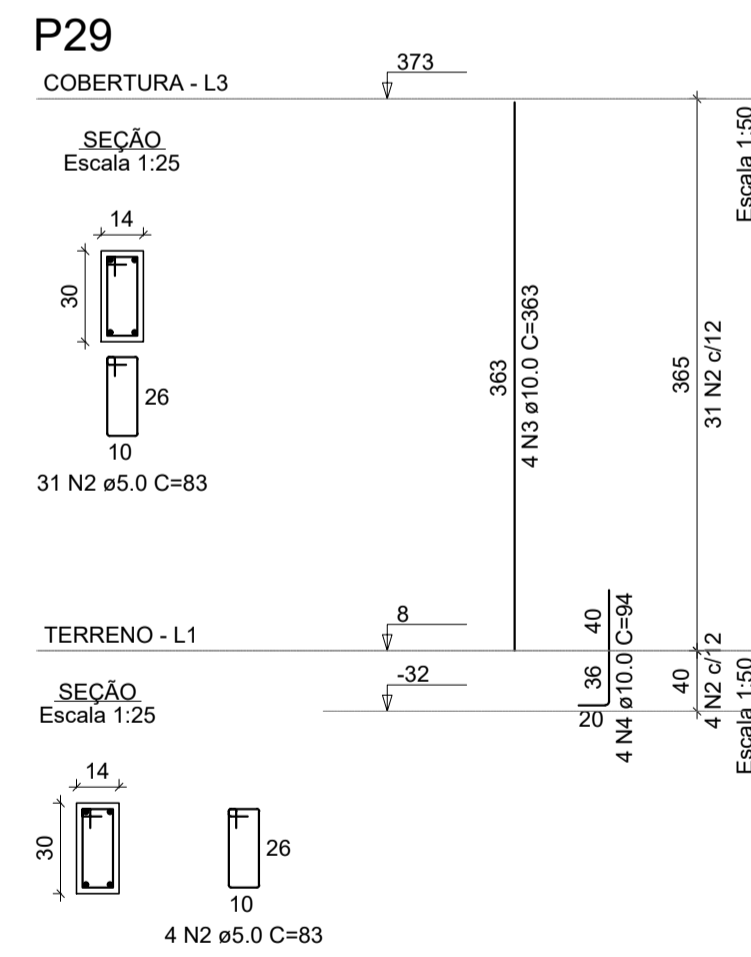
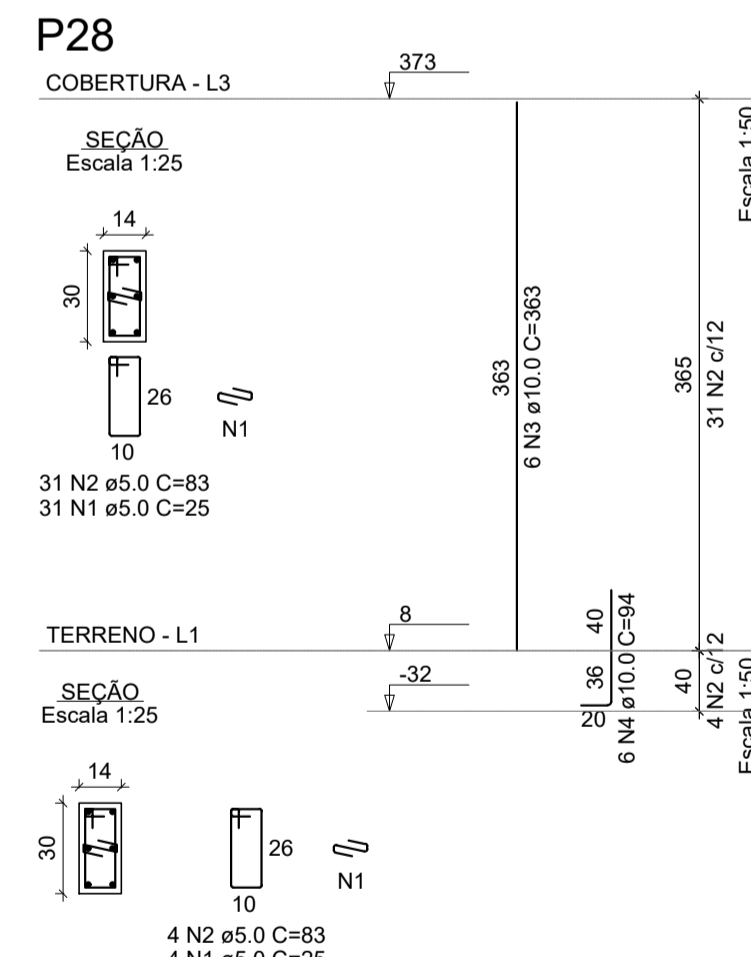
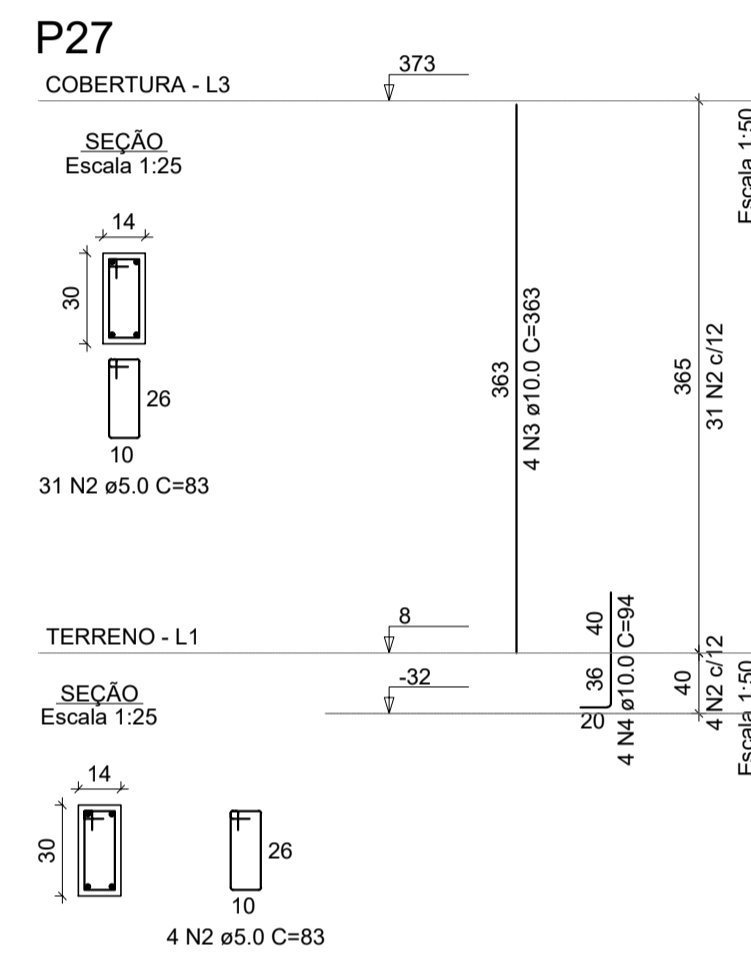
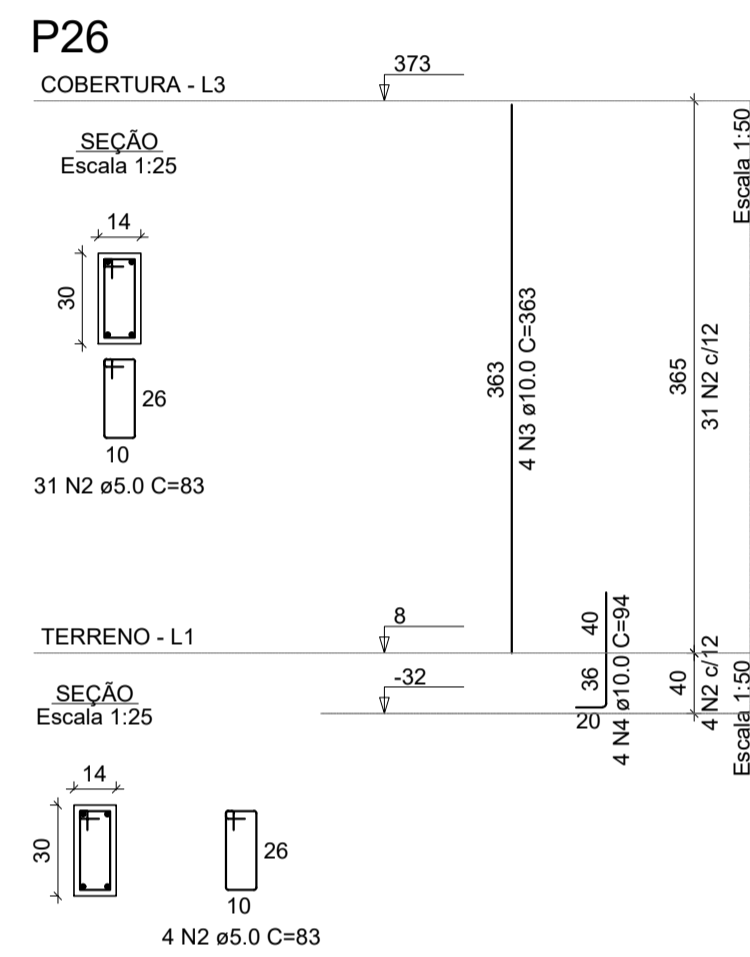
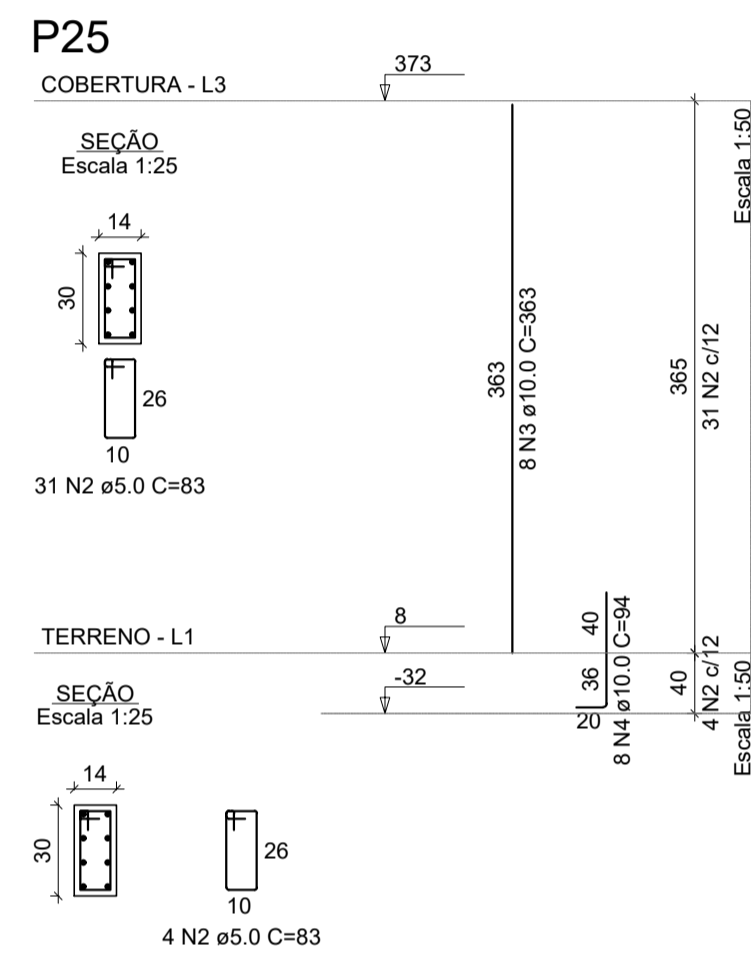
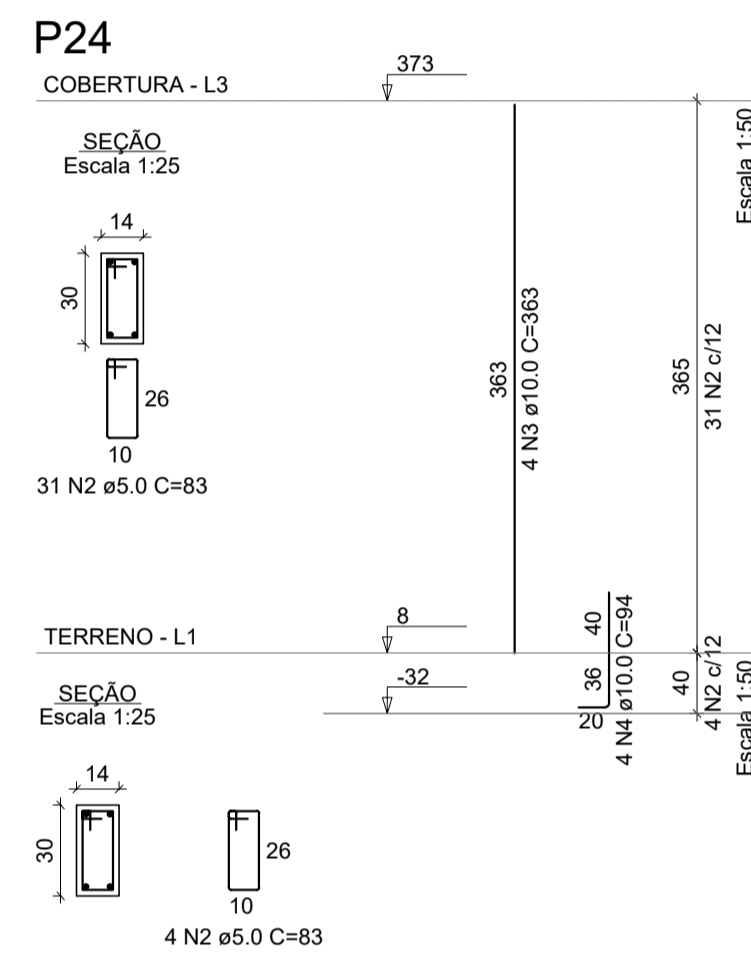
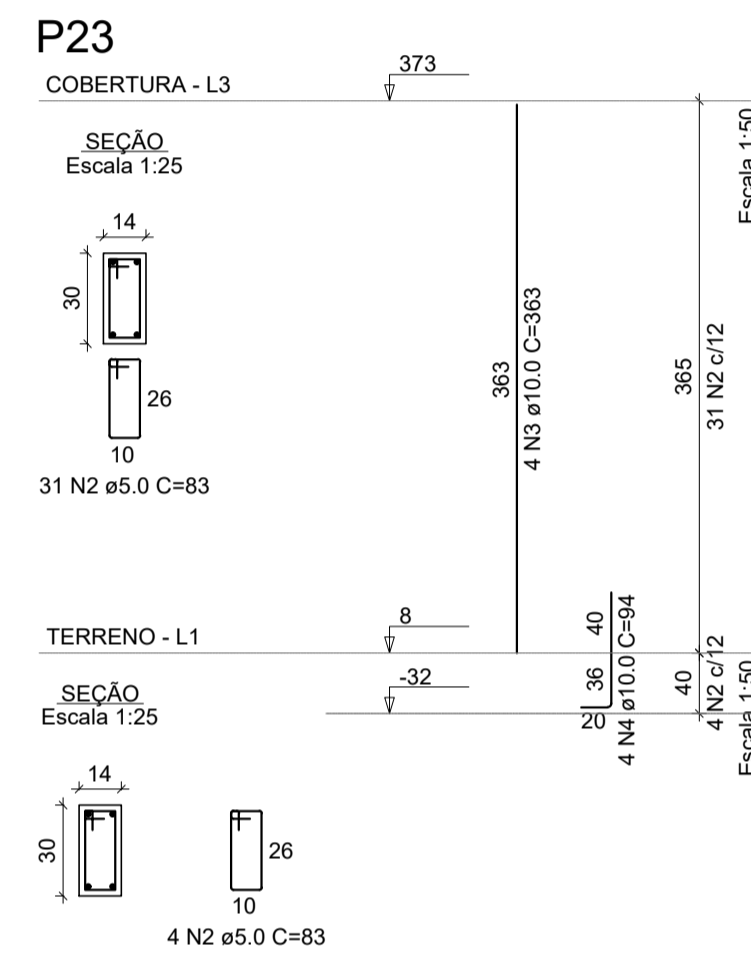
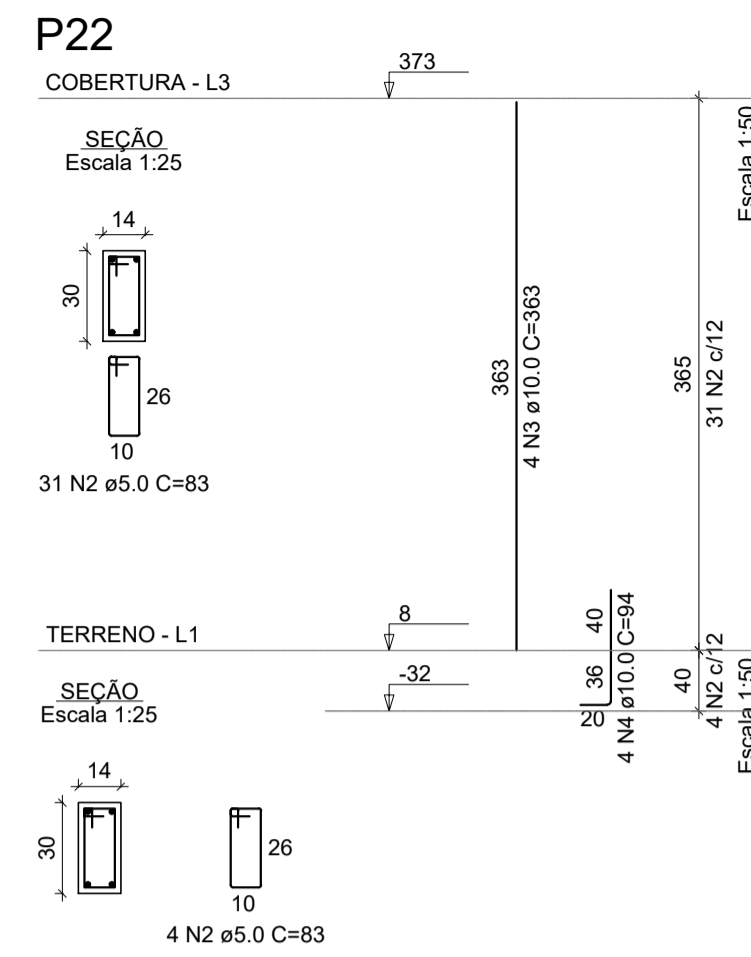
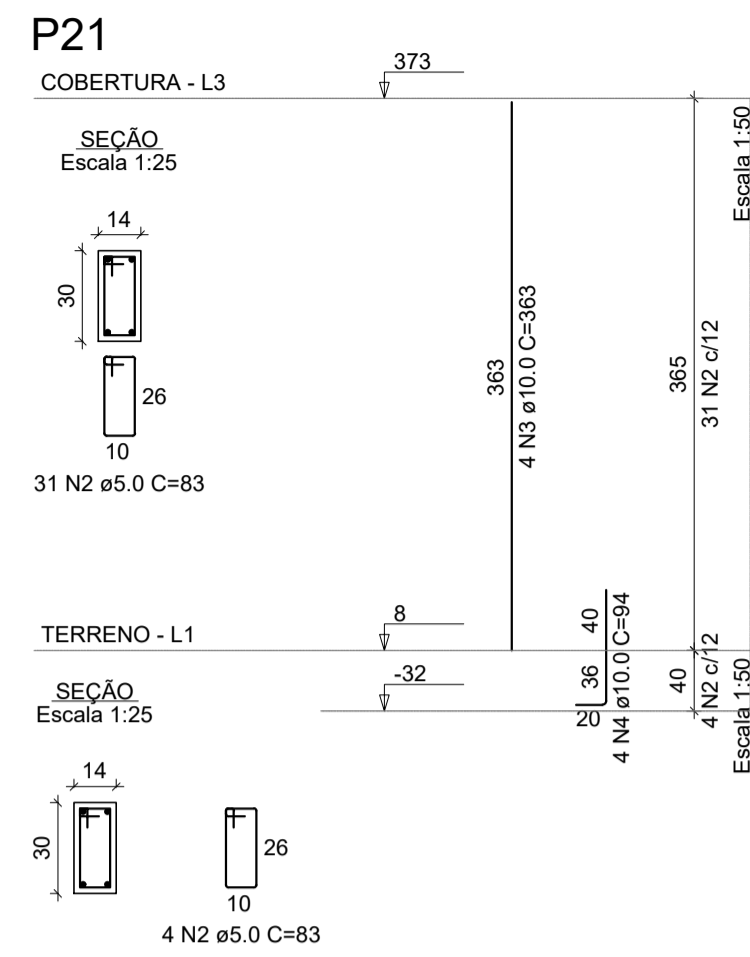
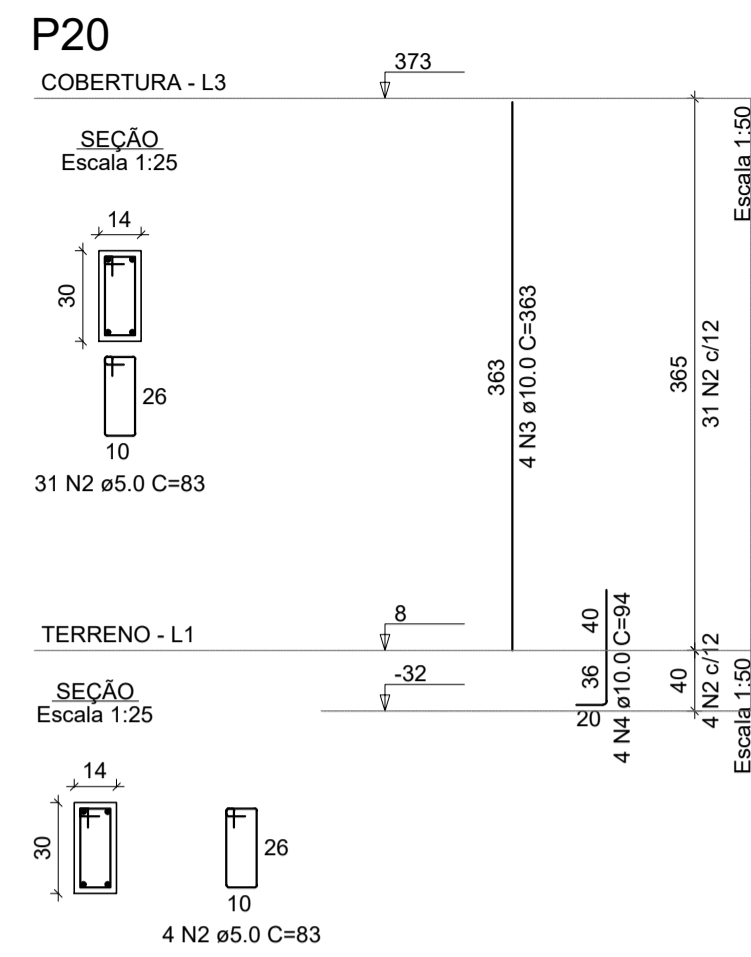
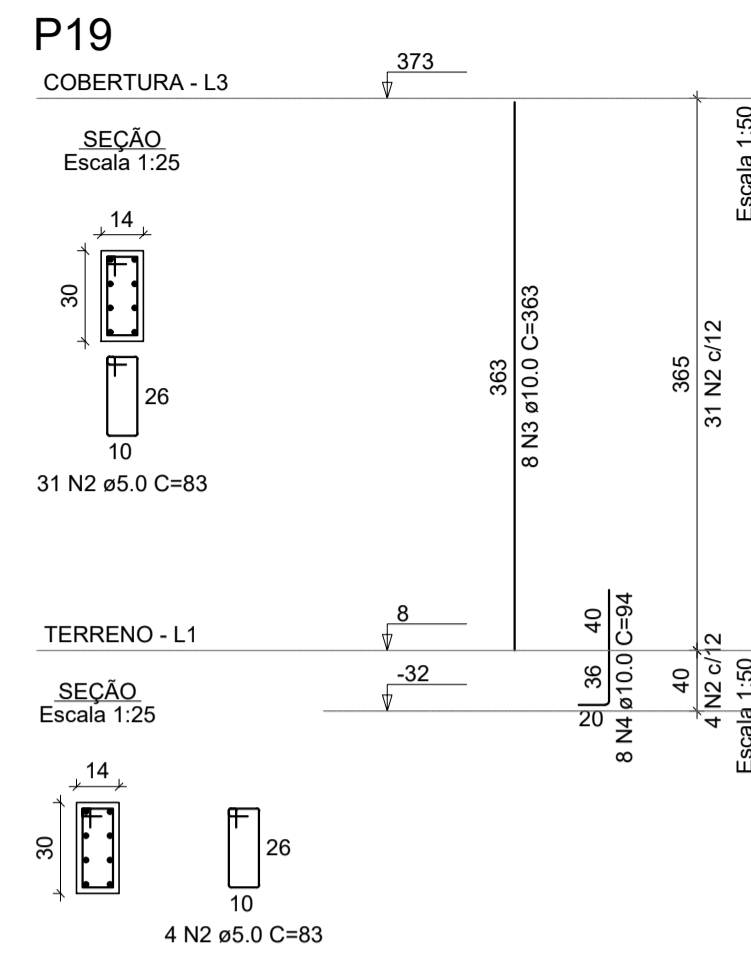
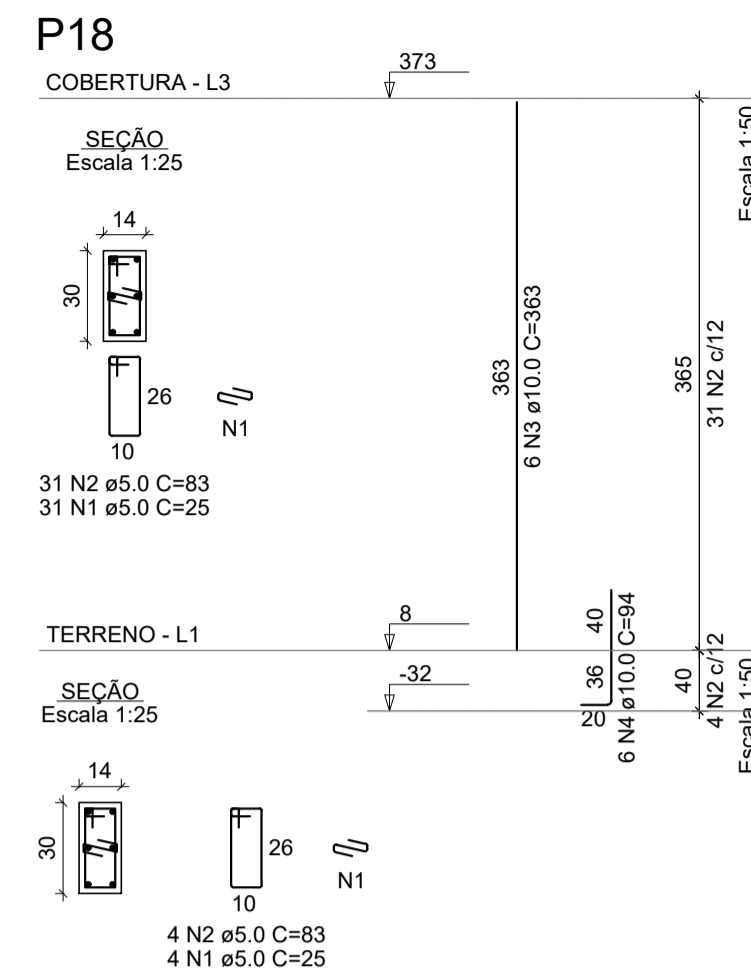


PROJETO ESTRUTURAL - CONSTRUÇÃO DA UBS VERGANI

Escala indicada



RELAÇÃO DO AÇO				
AÇO	N	DIAM (mm)	QUANT	C.TOTAL (cm)
CA50	1	5.0	70	25
CA50	2	5.0	525	83
CA50	3	10.0	76	363
CA50	4	10.0	76	94
				1750
				43575
				27588
				7144

RESUMO DO AÇO			
AÇO	DIAM (mm)	C.TOTAL (m)	PESO + 10% (kg)
CA50	10.0	347.3	235.5
CA60	5.0	453.3	76.8
PESO TOTAL (kg)			
CA50		235.5	
CA60		76.8	

Volume de concreto (C-30) = 2.55 m³  
Área de forma = 53.46 m²

REV. 00   27/08/21   EMISSÃO INICIAL REVISÃO   DATA :   DESCRIÇÃO.	DAC RESP.
CLIENTE	
Rua Miguel Viana, nº 81, Sala 12 Bairro Morro Chic CEP: 37500-080 - Itajubá / MG Tel: (35) 3623-5720 www.dacengenharia.com.br	
GERÊNCIA DE PROJETOS PEDRO HENRIQUE JUSTINIANO ENO CIVIL COORDENAÇÃO DE PROJETOS ALDOISO CAETANO FERREIRA CREA-MG-97.132/D RESPONSÁVEL TÉCNICO ENO FLÁVIA CRISTINA BARBOSA CREA-MG-187.842/D PROJETO WILLIAM BARADEL LARI DESENHO WILLIAM BARADEL LARI	PROJETO GERÊNCIA DE PROJETOS PEDRO HENRIQUE JUSTINIANO ENO CIVIL COORDENAÇÃO DE PROJETOS ALDOISO CAETANO FERREIRA CREA-MG-97.132/D RESPONSÁVEL TÉCNICO ENO FLÁVIA CRISTINA BARBOSA CREA-MG-187.842/D PROJETO WILLIAM BARADEL LARI DESENHO WILLIAM BARADEL LARI
EMPREENDIMENTO <b>CONSTRUÇÃO DA UBS VERGANI</b>	
ENDEREÇO AV. JOÃO FERREIRA DE FREITAS, BAIRRO VERGANI POUSO ALEGRE - MINAS GERAIS	DISCIPLINA <b>ESTRUTURAL</b>
ASSUNTO PROJETO ESTRUTURAL EM CONCRETO ARMADO DETALHAMENTO DOS PILARES	FASE DO PROJETO <b>EXECUTIVO</b>
DATA INICIAL 02/08/2021	ESCALA INDICADA
REVISÃO R00	ARQUIVO DAC-PMPA-VER-EST-PE-R00.DWG
FOLHA Nº. <b>07/20</b>	