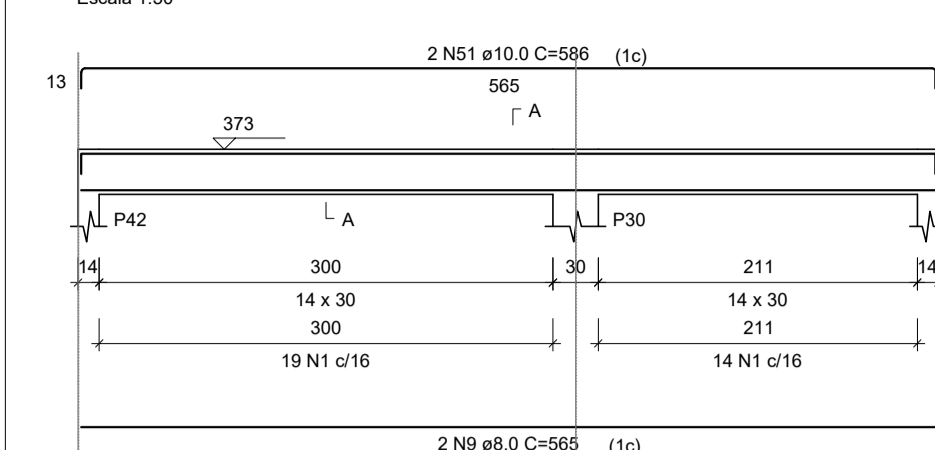


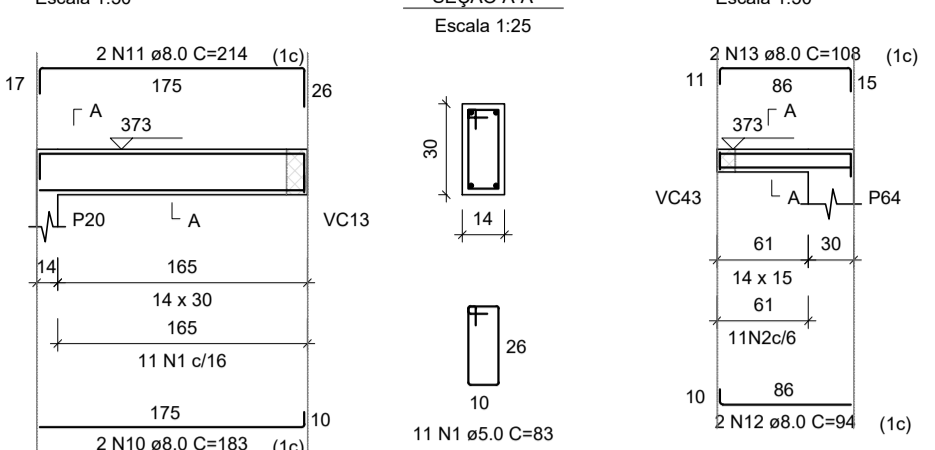
PROJETO ESTRUTURAL - CONSTRUÇÃO DA UBS VERGANI

Escala indicada

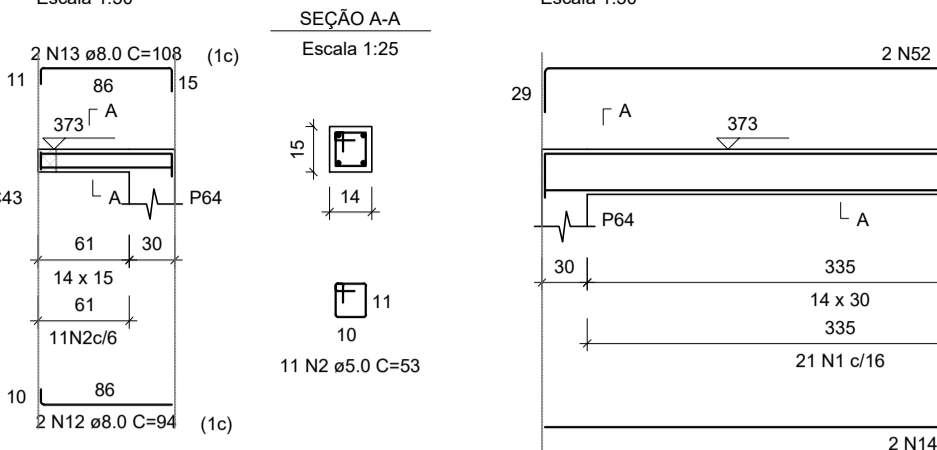
VC76



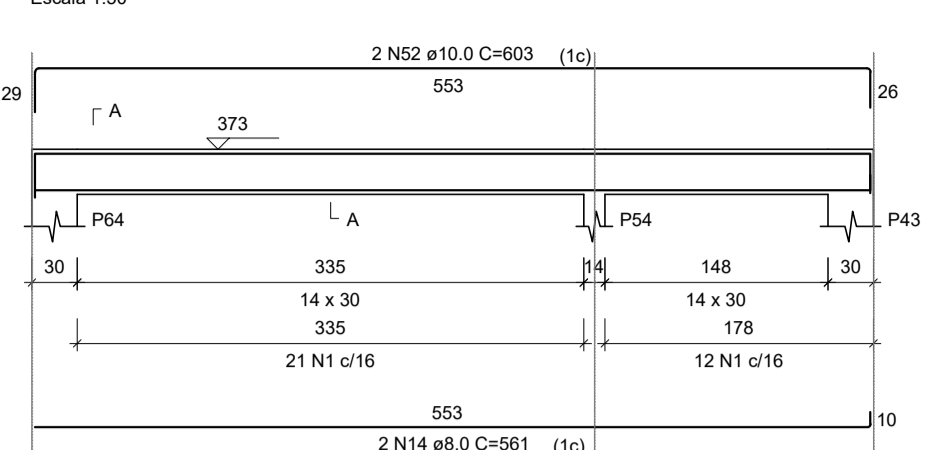
VC77



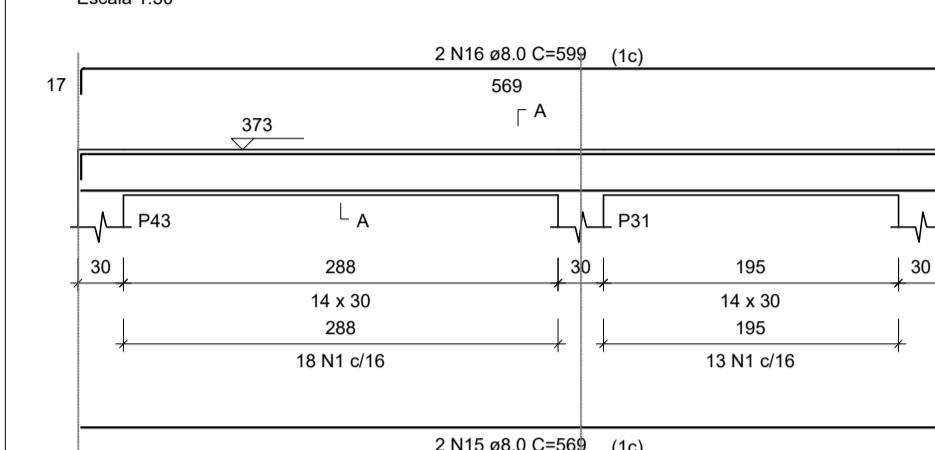
VC78



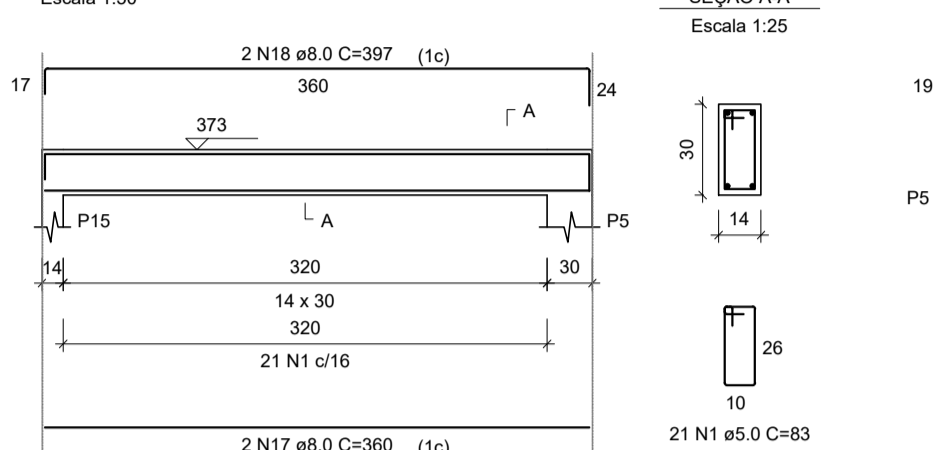
VC79



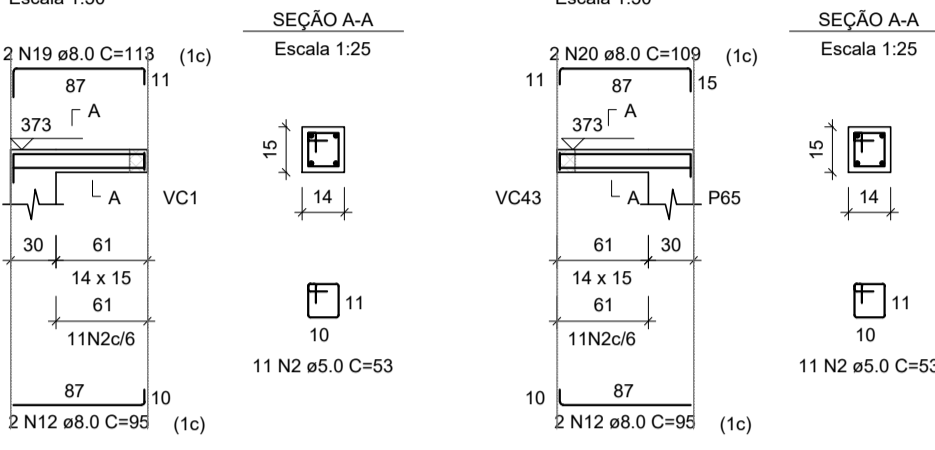
VC80



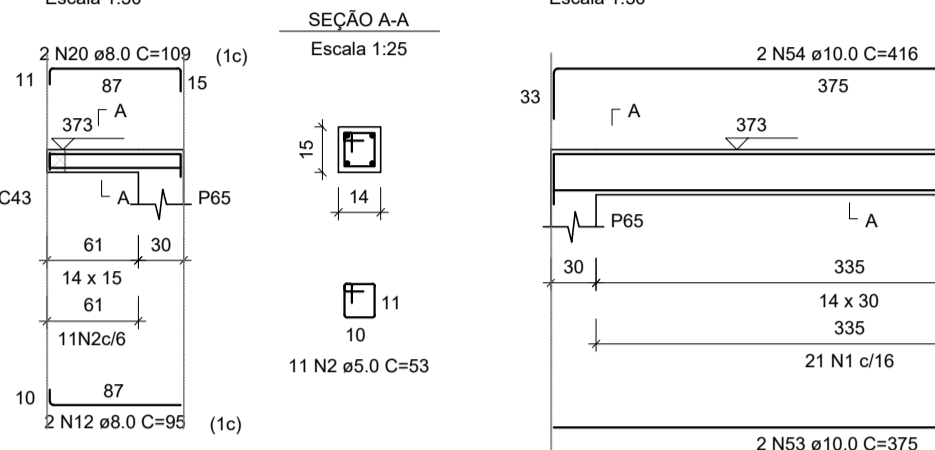
VC81



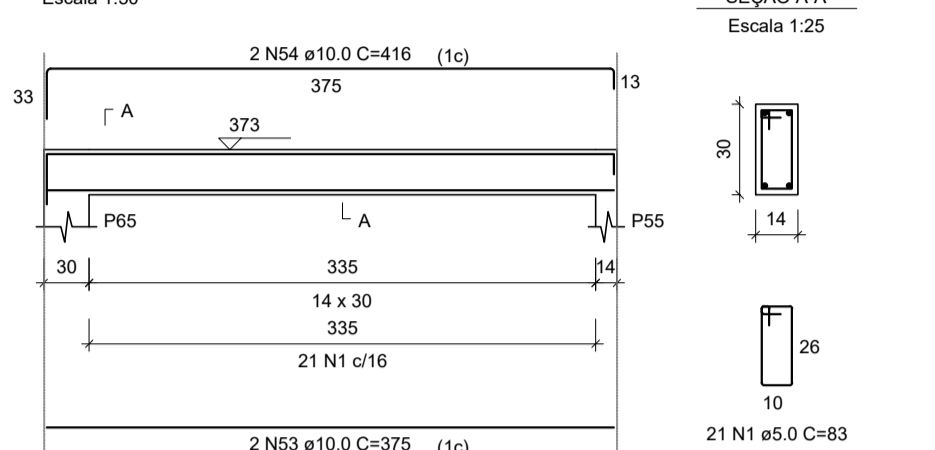
VC82



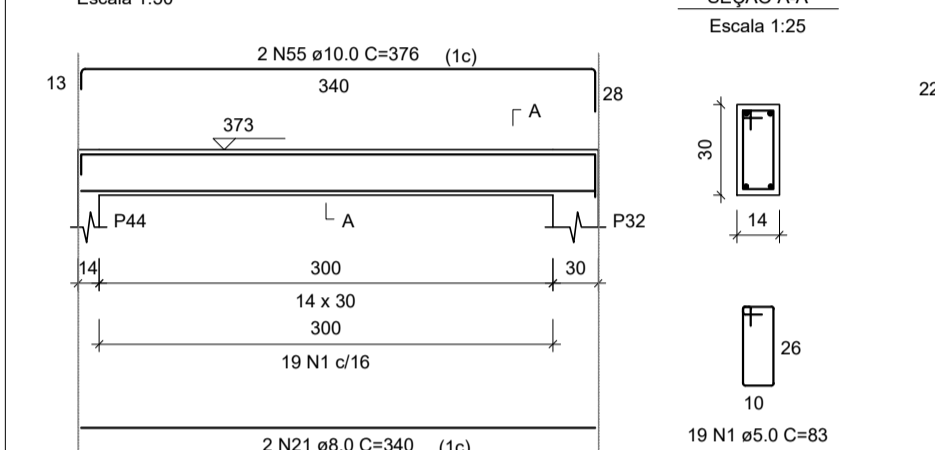
VC83



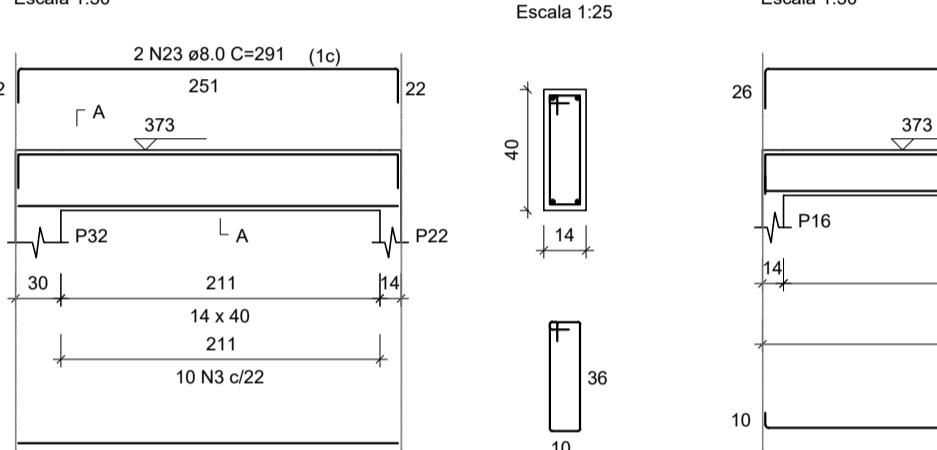
VC84



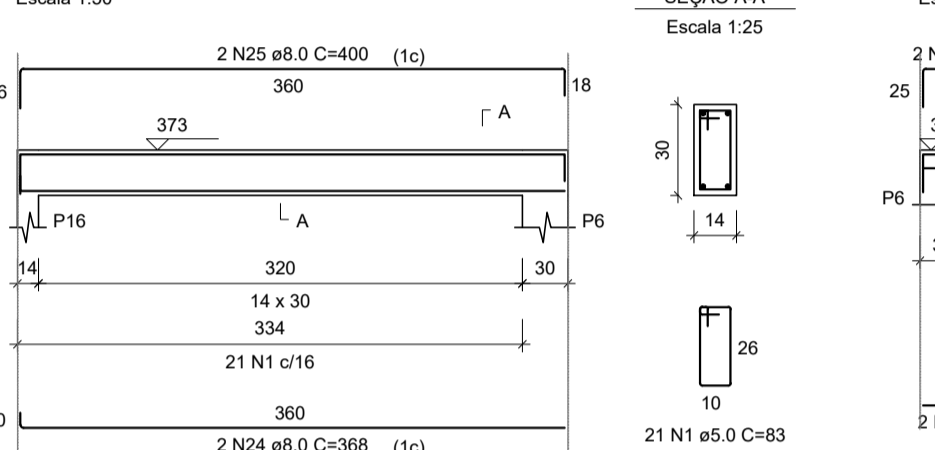
VC85



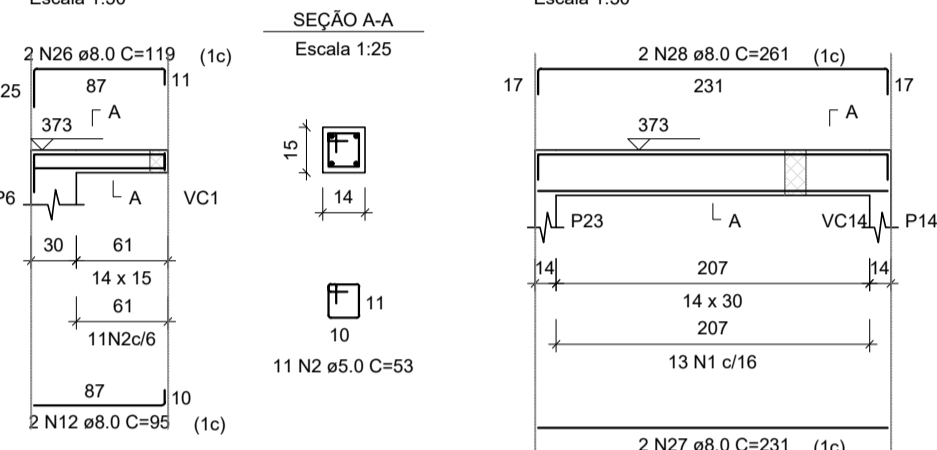
VC86



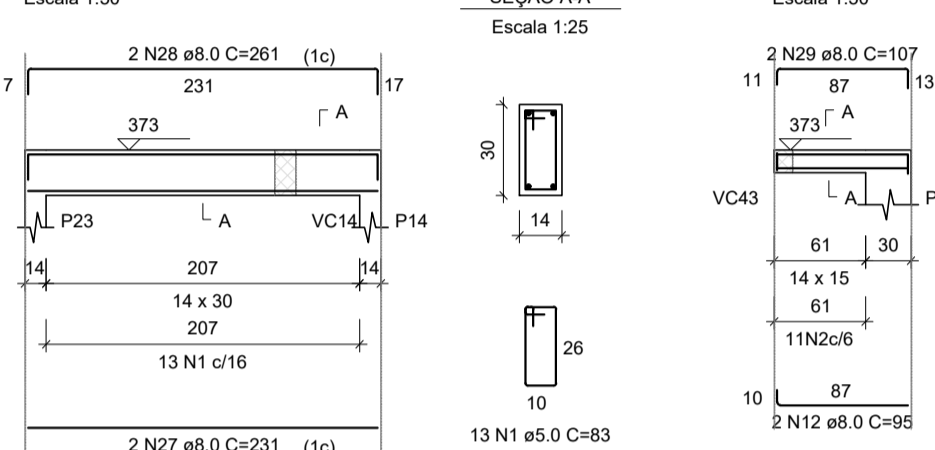
VC87



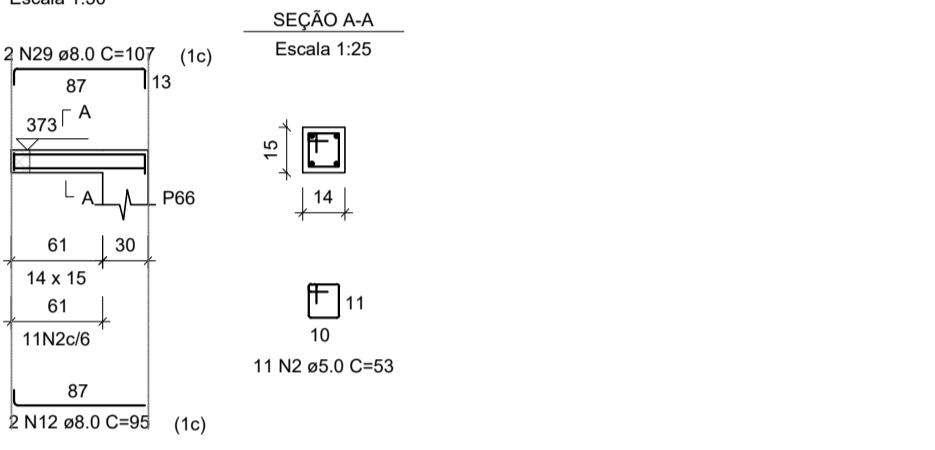
VC88



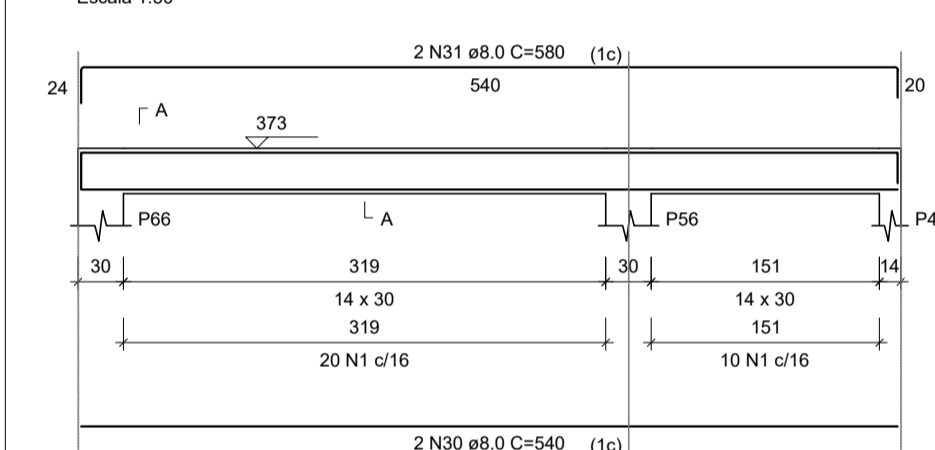
VC89



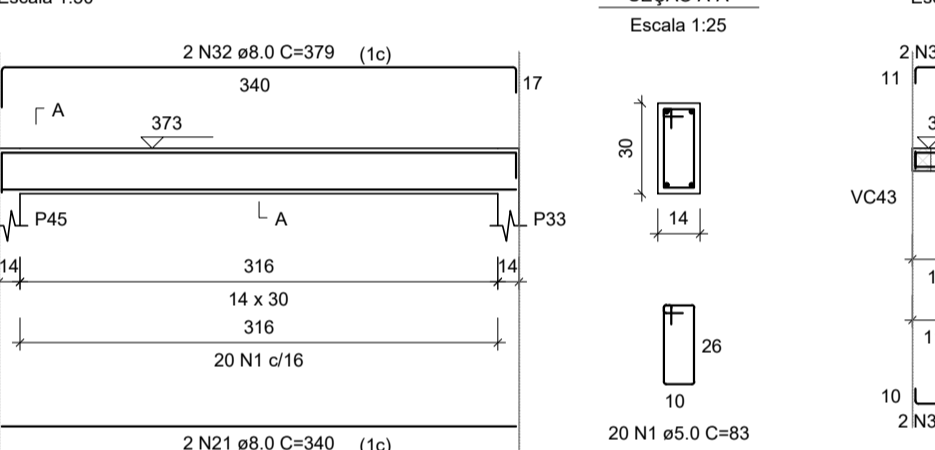
VC90



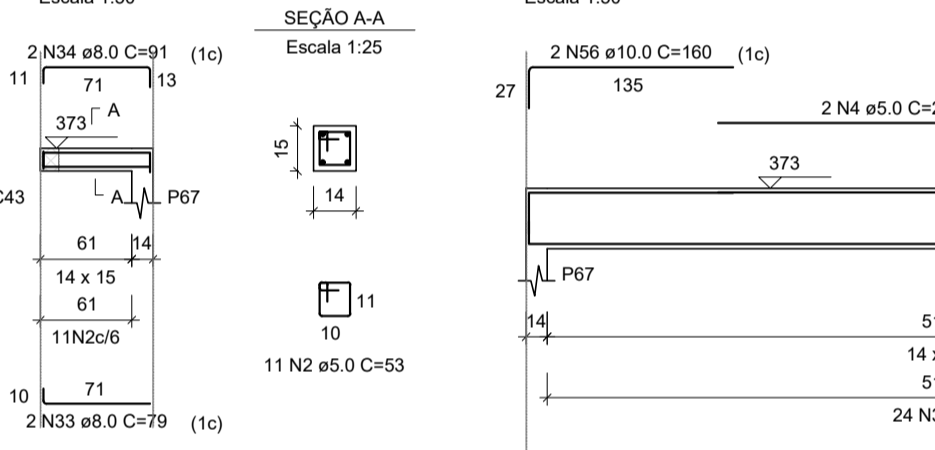
VC91



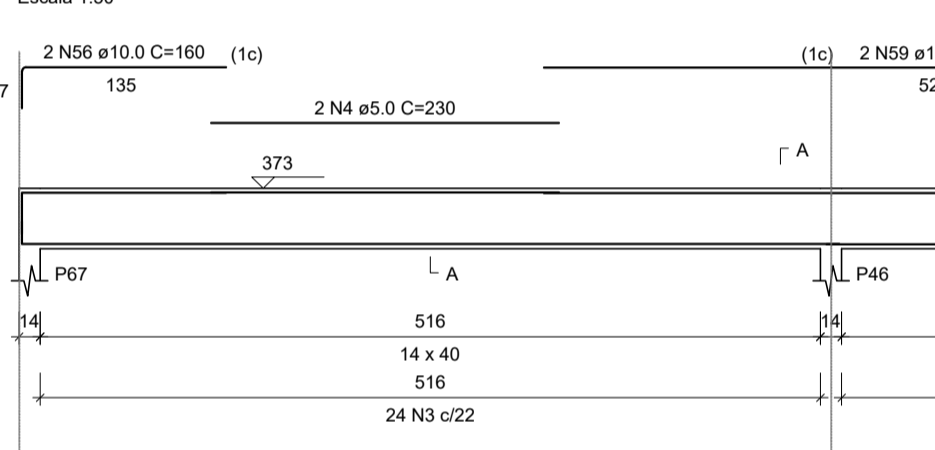
VC92



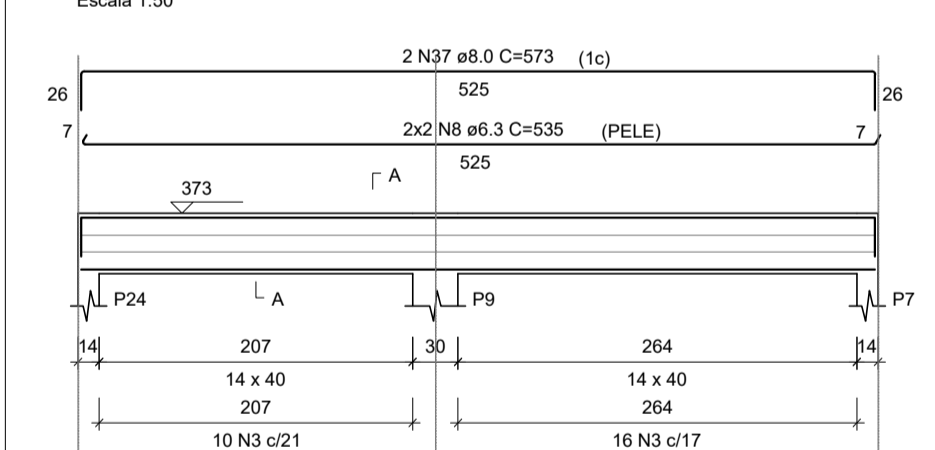
VC93



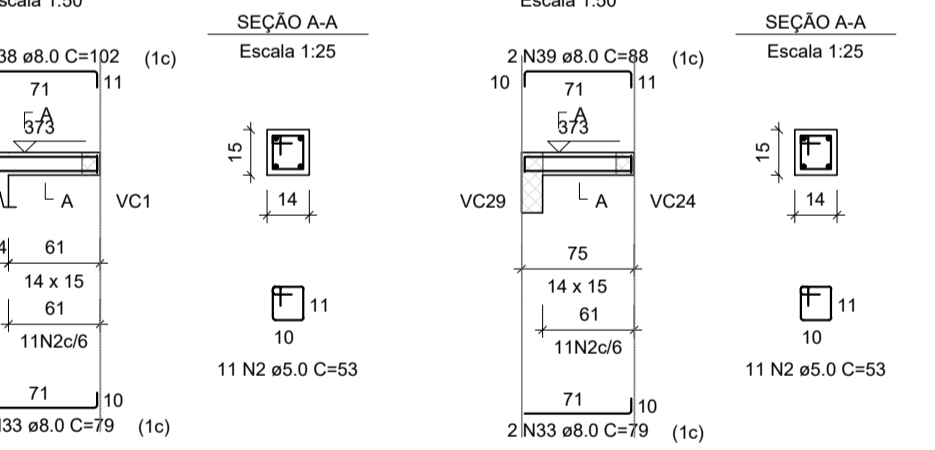
VC94



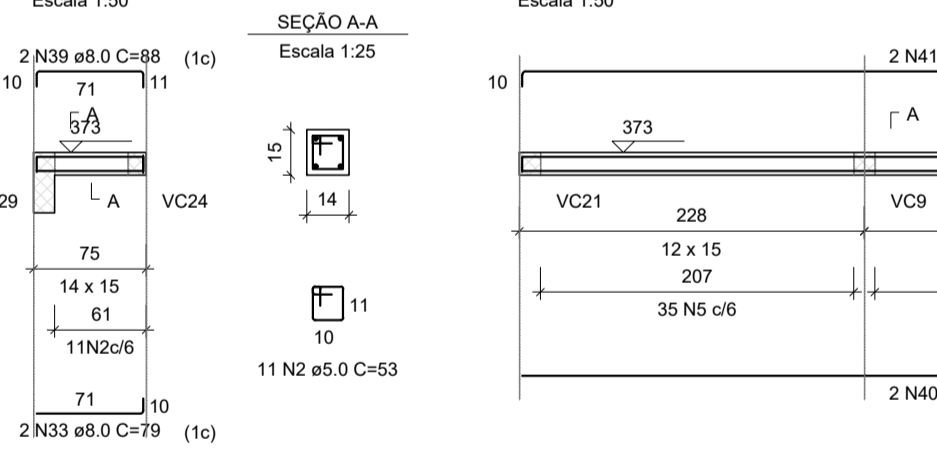
VC95



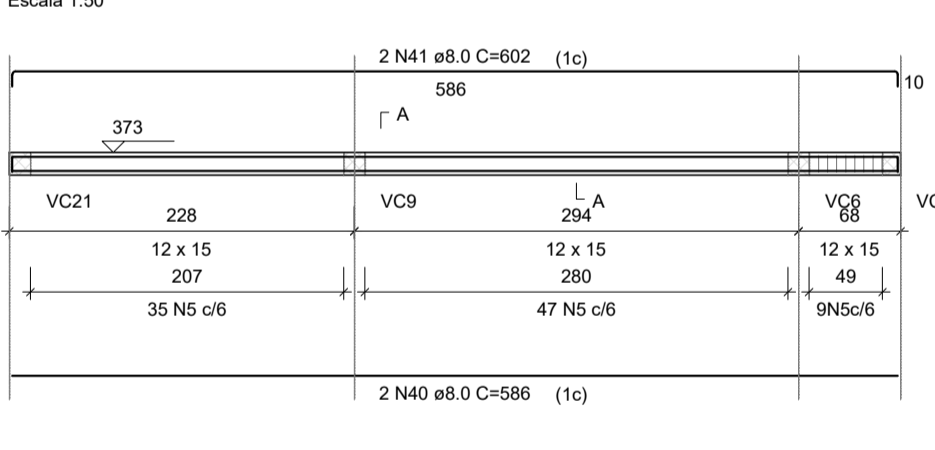
VC96



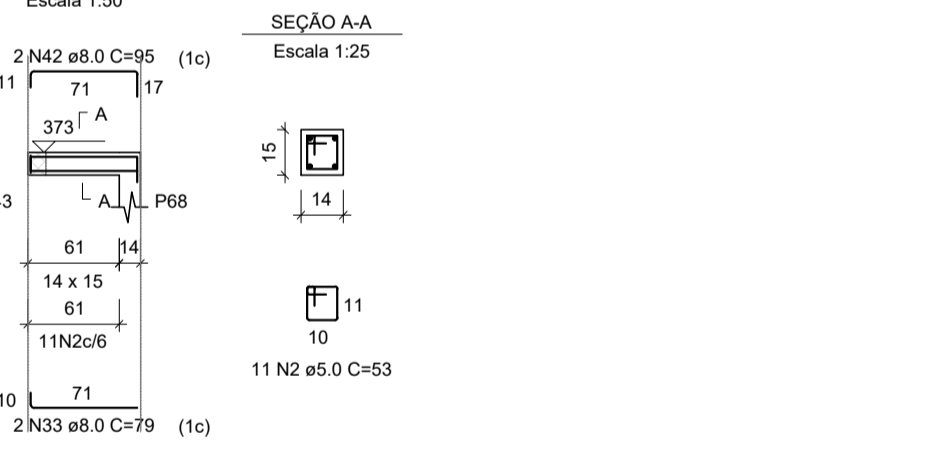
VC97



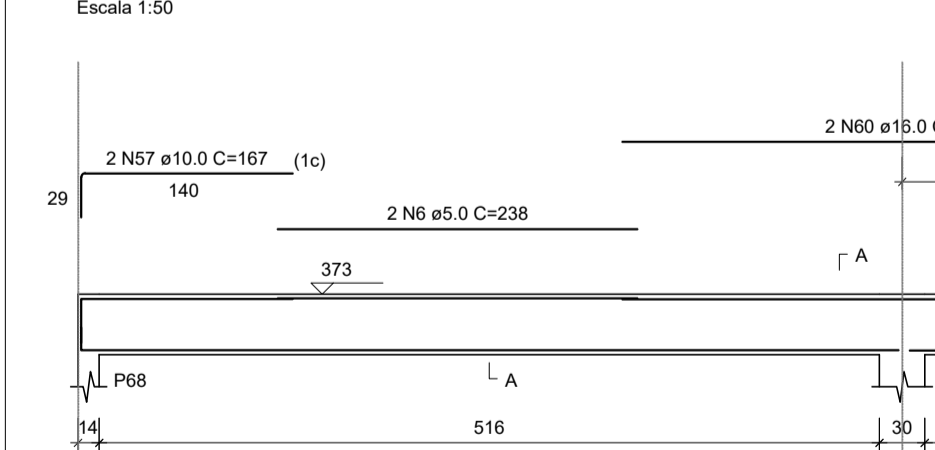
VC98



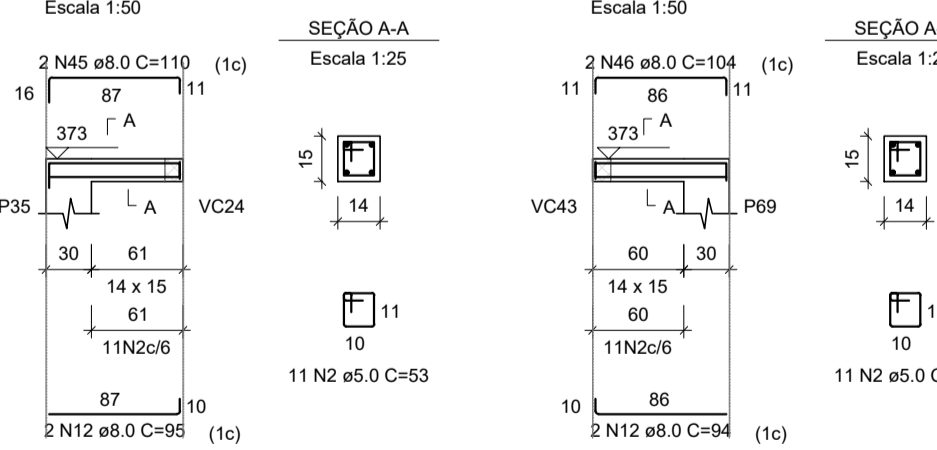
VC99



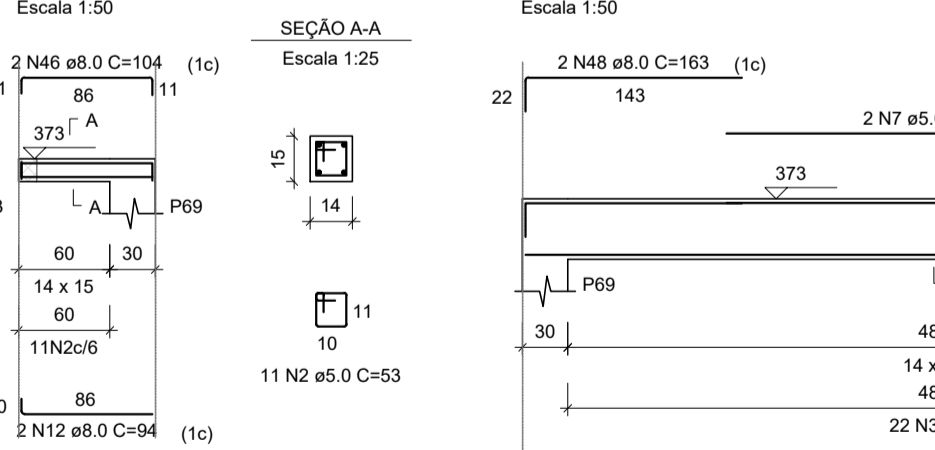
VC100



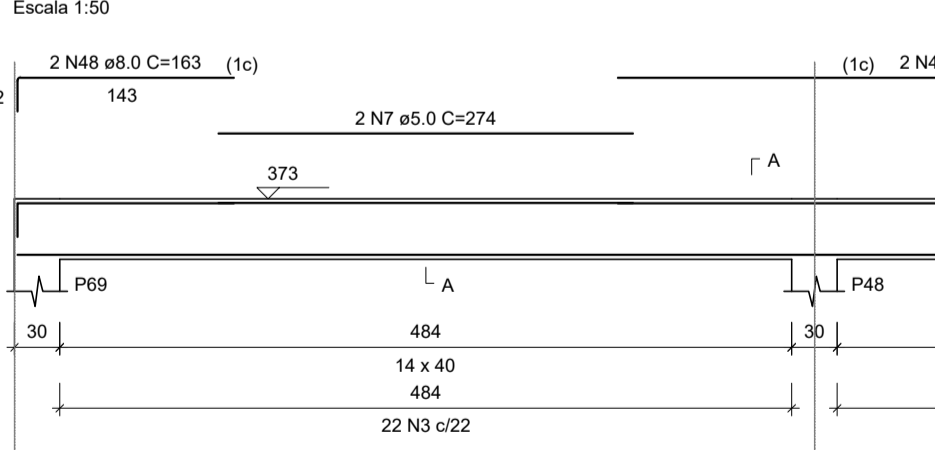
VC101



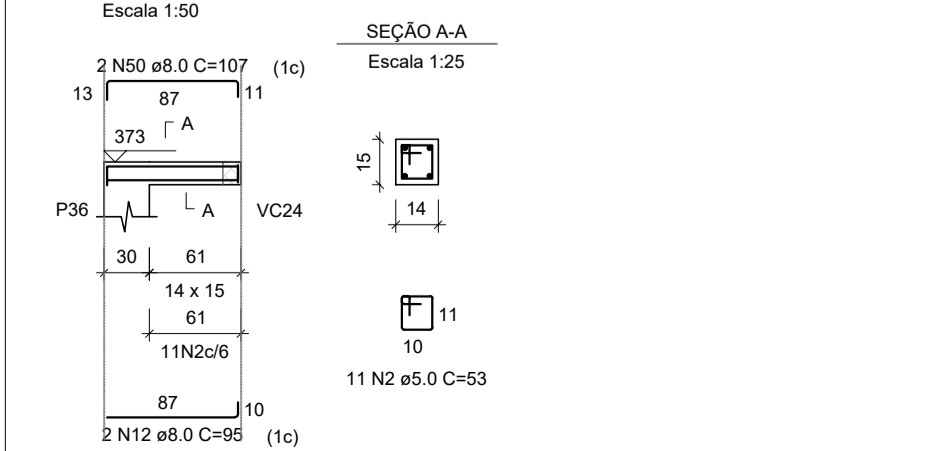
VC102



VC103



VC104



RELAÇÃO DO AÇO

AÇO	N	DIAM (mm)	QUANT	C.UNIT (cm)	C.TOTAL (cm)
CA60	1	5.0	253	63	20999
CA60	2	5.0	132	63	6596
CA60	3	5.0	148	103	15244
CA60	4	5.0	2	230	460
CA60	5	5.0	91	49	4459
CA60	6	5.0	2	238	476
CA60	7	5.0	2	274	548
CA60	8	5.0	4	535	2140
CA60	9	8.0	2	565	1130
CA60	10	8.0	2	183	366
CA60	11	8.0	2	214	428
CA60	12	8.0	16	94	1504
CA60	13	8.0	2	108	216
CA60	14	8.0	2	561	1122
CA60	15	8.0	2	569	1138
CA60	16	8.0	2	599	1198
CA60	17	8.0	2	360	720
CA60	18	8.0	2	397	794
CA60	19	8.0	2	113	226
CA60	20	8.0	2	109	218
CA60	21	8.0	4	340	1360
CA60	22	8.0	2	251	502
CA60	23	8.0	2	291	582
CA60	24	8.0	2	368	736
CA60	25	8.0	2	400	800
CA60	26	8.0	2	119	238
CA60	27	8.0	2	231	462
CA60	28	8.0	2	261	522
CA60	29	8.0	2	107	214
CA60	30	8.0	2	540	1080
CA60	31	8.0	2	580	1160
CA60	32	8.0	2	379	758
CA60	33	8.0	8	79	632
CA60	34	8.0	2	91	182
CA60	35	8.0	2	338	676
CA60	36	8.0	2	88	176
CA60	37	8.0	2	573	1146
CA60	38	8.0	2	102	204
CA60	39	8.0	2	88	176
CA60	40	8.0	2	586	1172
CA60	41	8.0	2	602	1204
CA60	42	8.0	2	95	190
CA60	43	8.0	2	322	644
CA60	44	8.0	2	167	334
CA60	45	8.0	2	110	220
CA60	46	8.0	2	104	208
CA60	47	8.0	2	870	1740
CA60	48	8.0	2	163	326
CA60	49	8.0	2	493	986
CA60	50	8.0	2	107	214
CA60	51	10.0	2	586	1172
CA60	52	10.0	2	603	1206
CA60	53	10.0	2	375	750
CA60	54	10.0	2	416	832
CA60	55	10.0	2	376	752
CA60	56	10.0	2	160	320
CA60	57	10.0	2	167	334
CA60	58	12.5	4	552	2208
CA60	59	12.5	2	536	1072
CA60	60	16.0	2	375	750

RESUMO DO AÇO

AÇO	DIAM (mm)	C.TOTAL (m)	PESO + 10% (kg)
CA50	6.3	21.4	5.8
CA50	8.0	287.9	125
CA50	10.0	53.7	36.4
CA50	12.5	32.8	34.8
CA50	16.0	7.5	13
CA60	5.0	491.8	83.4
CA60	8.0	214.9	37.4
CA60	10.0	83.4	11.4

Volume de concreto (C-30) = 4.10 m³  
Área de forma = 71.93 m²

Prefeitura Municipal de Pouso Alegre

<p>PROJETO</p> <p>Rua Miguel Viana, nº 81, Sala 12 Bairro Morro Chic CEP: 37500-080 - Itajubá / MG Tel: (35) 3623-5720 www.dacengenharia.com.br</p>	<p>GERÊNCIA DE PROJETOS PEDRO HENRIQUE JUSTINIANO ENO CIVIL</p> <p>COORDENAÇÃO DE PROJETOS ALDOISO CAETANO FERREIRA CREA-MG-97.132D</p> <p>RESPONSÁVEL TÉCNICO ENO FLÁVIA CRISTINA BARBOSA CREA-MG-187.842D</p> <p>PROJETO WILLIAM BARADELARI</p> <p>DESENHO WILLIAM BARADELARI</p>
<p>EMPREENDIMENTO</p> <p><b>CONSTRUÇÃO DA UBS VERGANI</b></p>	
<p>ENDEREÇO AV. JOÃO FERREIRA DE FREITAS, BAIRRO VERGANI POUSO ALEGRE - MINAS GERAIS</p> <p>ASSUNTO PROJETO ESTRUTURAL EM CONCRETO ARMADO DETALHAMENTO DAS VIGAS</p>	<p>DISCIPLINA <b>ESTRUTURAL</b></p> <p>FASE DO PROJETO <b>EXECUTIVO</b></p> <p>FOLHA Nº <b>17/20</b></p>
<p>DATA INICIAL 02/08/2021</p> <p>ESCALA INDICADA</p> <p>REVISÃO R00</p> <p>ARQUIVO DAC-PMPA-VER-EST-PE-R00.DWG</p>	<p>REVISÃO R00</p> <p>ARQUIVO DAC-PMPA-VER-EST-PE-R00.DWG</p>