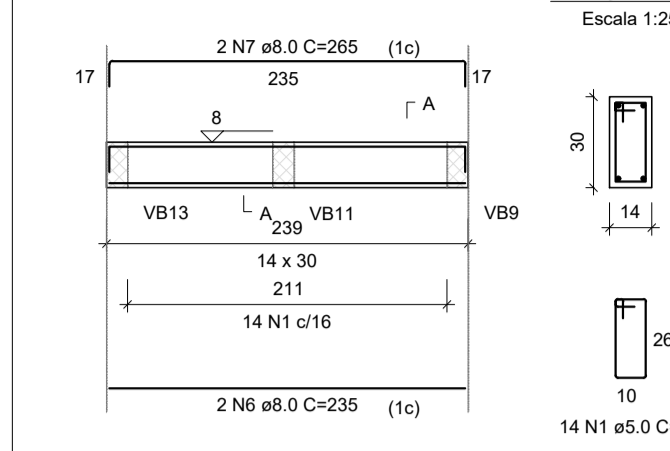


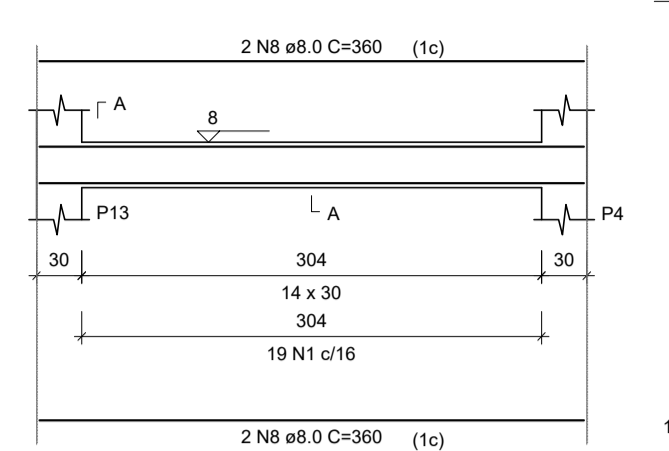
PROJETO ESTRUTURAL - CONSTRUÇÃO DA UBS VERGANI

Escala indicada

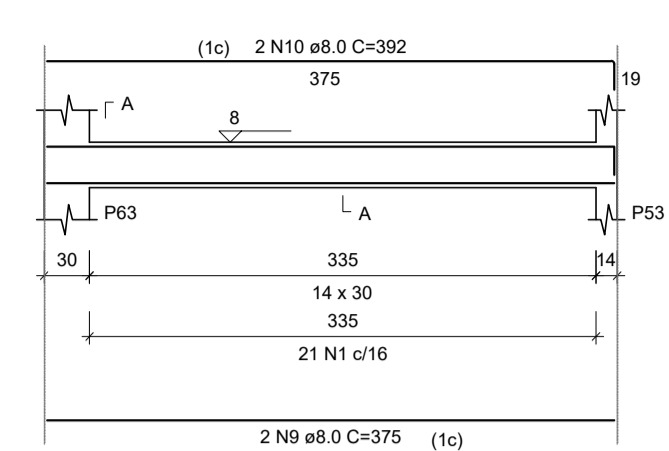
VB44
Escala 1:50



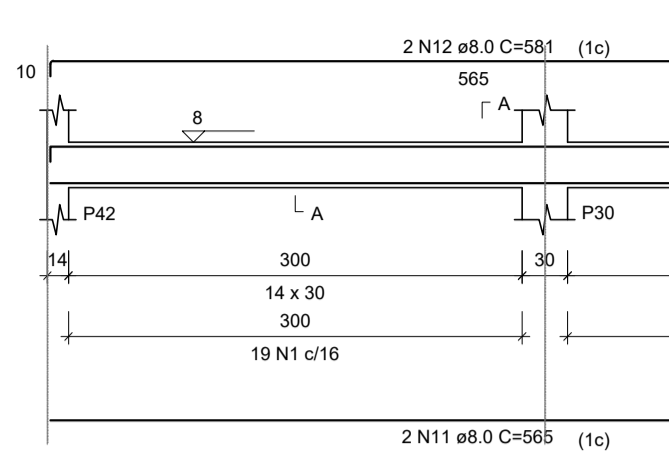
VB45
Escala 1:50



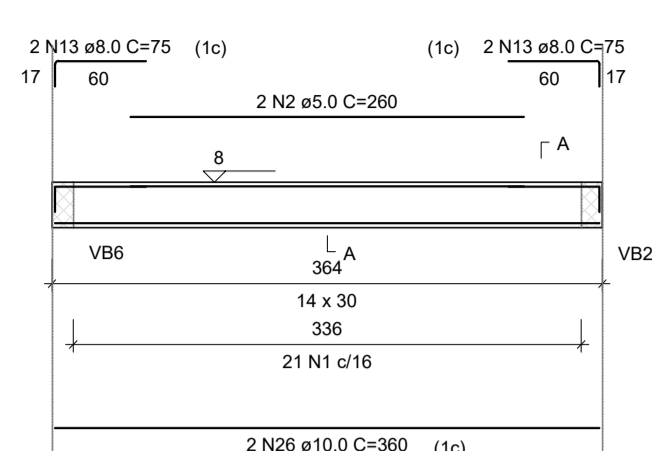
VB46
Escala 1:50



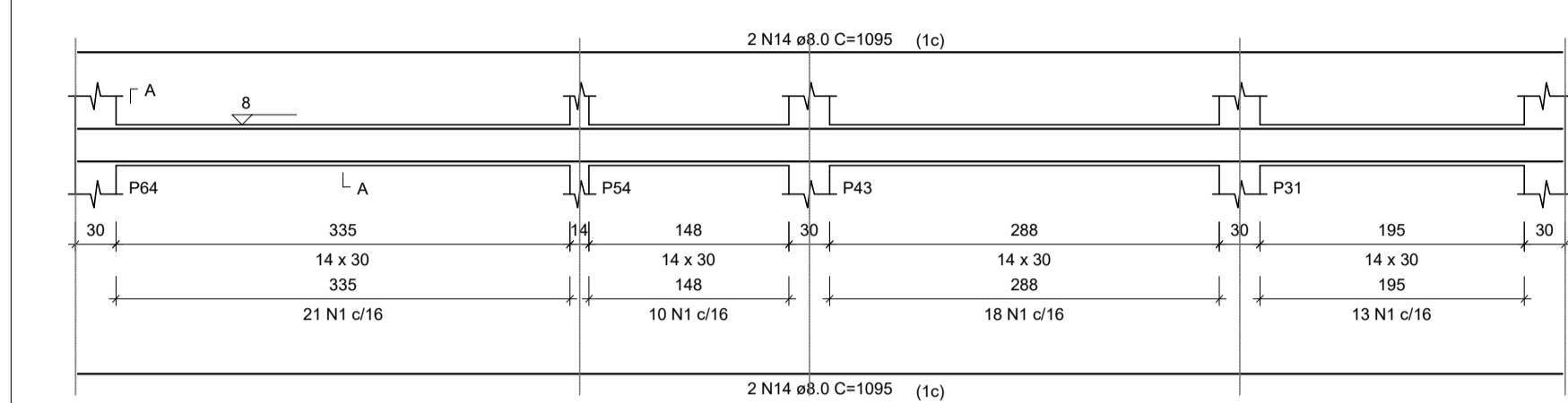
VB47
Escala 1:50



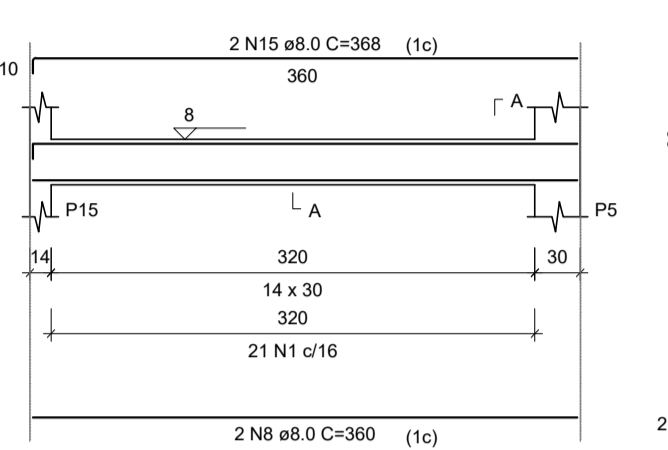
VB48
Escala 1:50



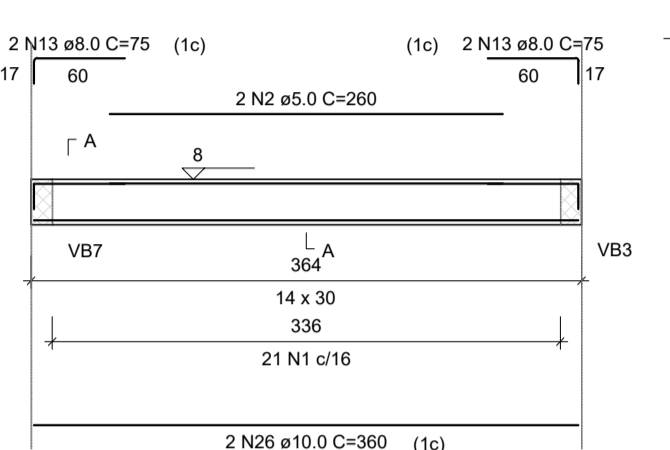
VB49
Escala 1:50



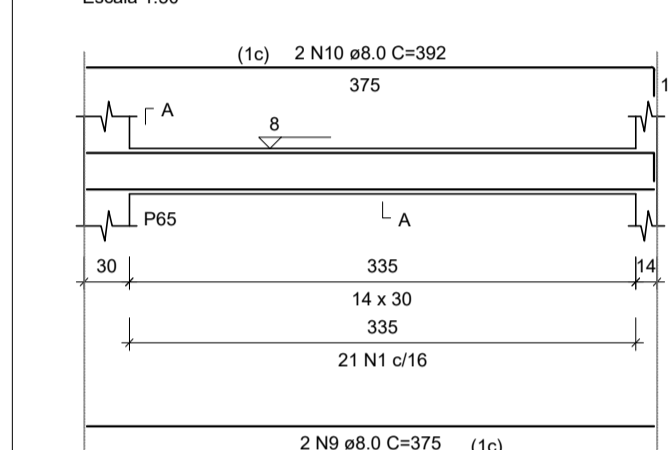
VB50
Escala 1:50



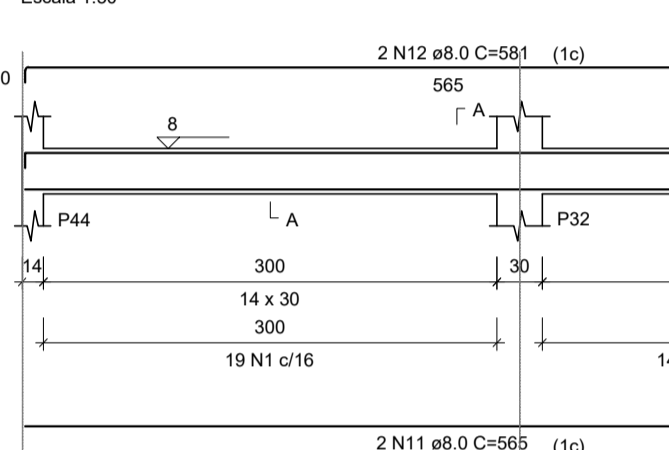
VB51
Escala 1:50



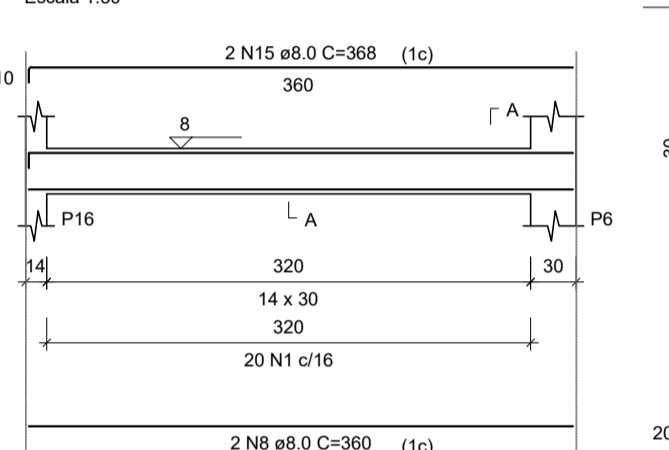
VB52
Escala 1:50



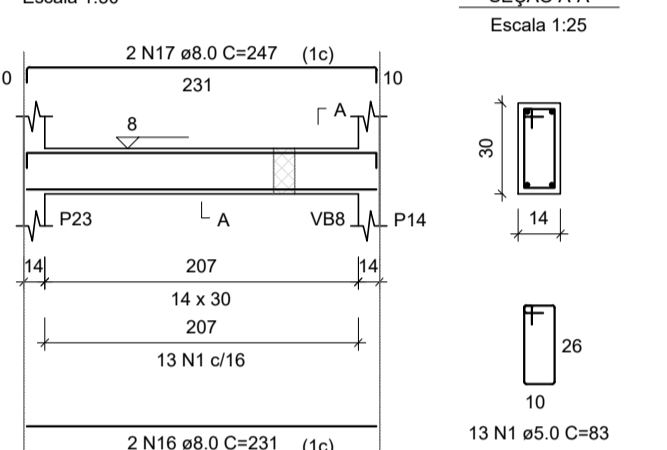
VB53
Escala 1:50



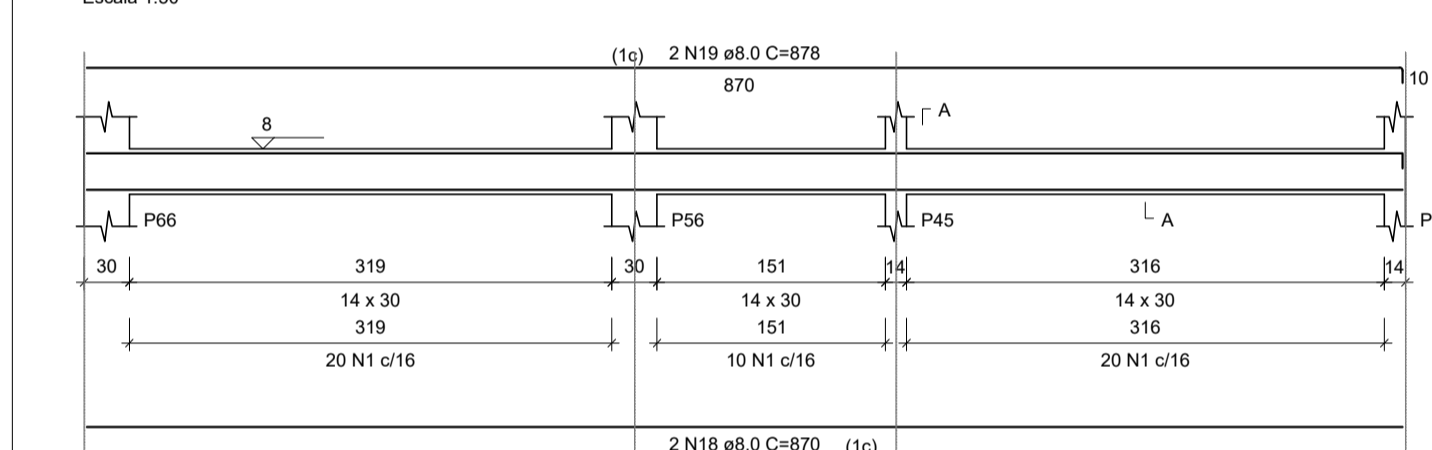
VB54
Escala 1:50



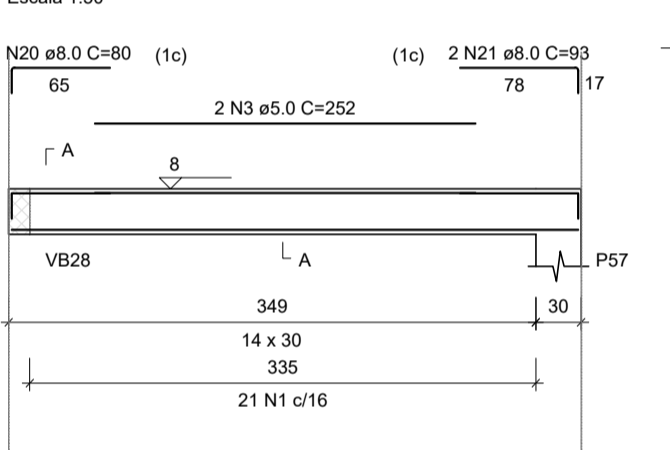
VB55
Escala 1:50



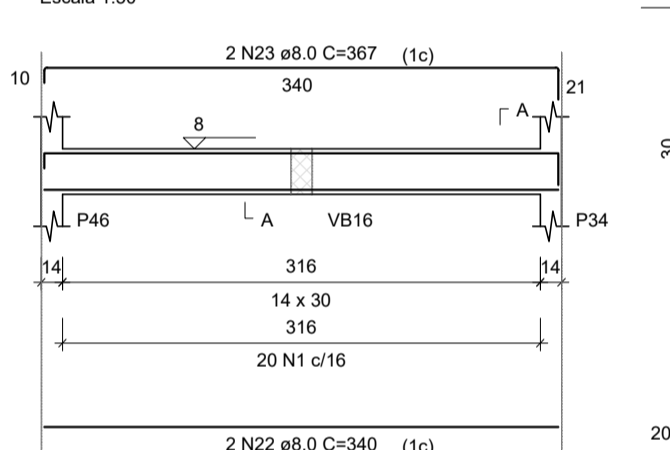
VB56
Escala 1:50



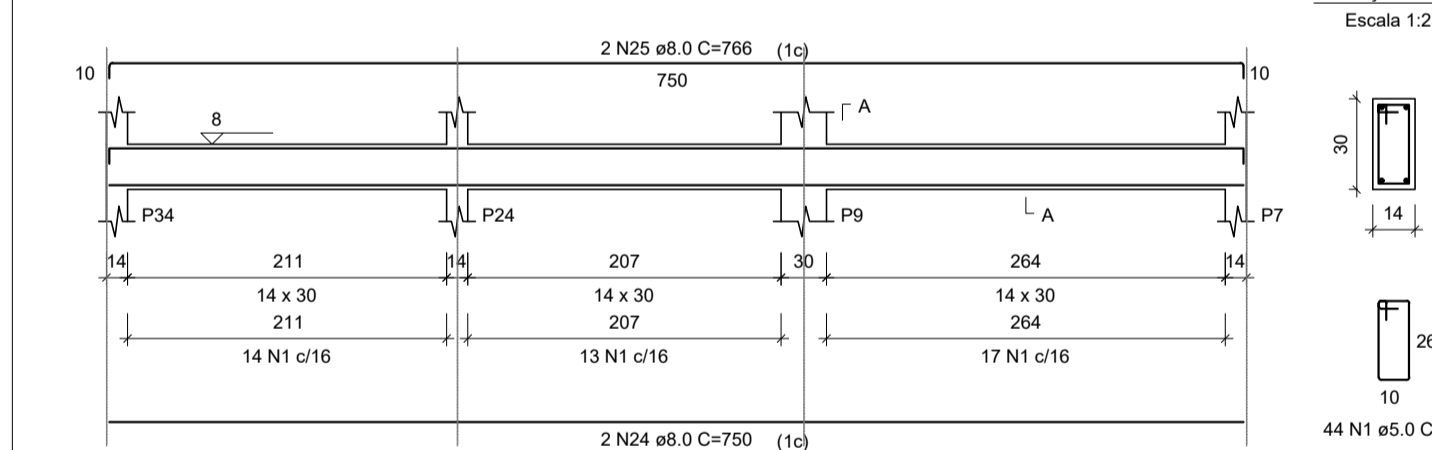
VB57
Escala 1:50



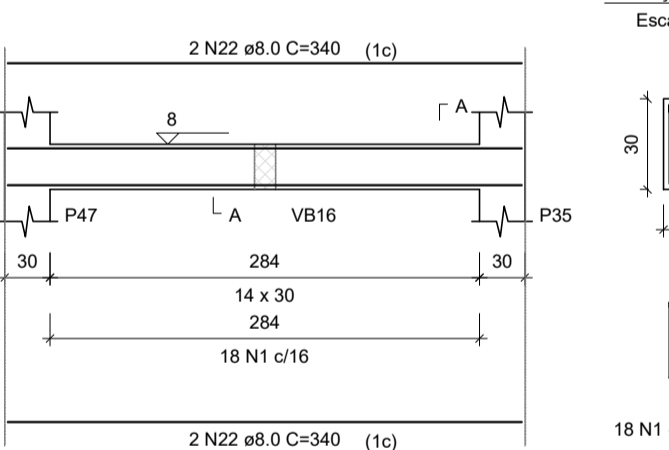
VB58
Escala 1:50



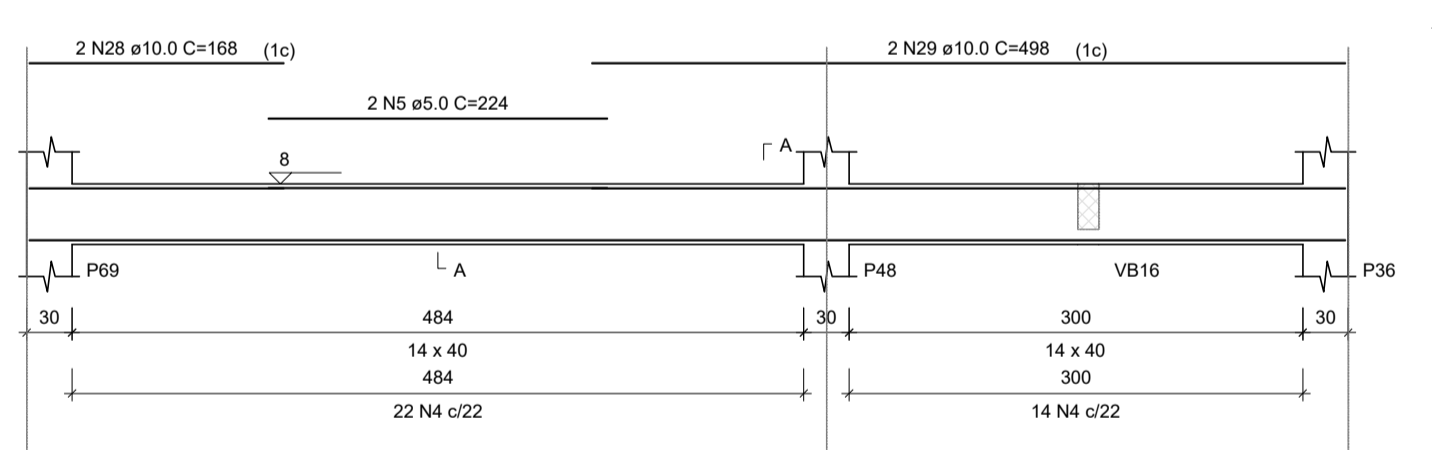
VB59
Escala 1:50



VB60
Escala 1:50



VB61
Escala 1:50



RELAÇÃO DO AÇO

| ACO | N | DIAM (mm) | QUANT | C.UNIT (cm) | C.TOTAL (cm) |
|------|----|-----------|-------|-------------|--------------|
| CA60 | 1 | 5.0 | 452 | 83 | 37516 |
| | 2 | 5.0 | 4 | 260 | 1040 |
| | 3 | 5.0 | 2 | 252 | 504 |
| | 4 | 5.0 | 36 | 103 | 3708 |
| | 5 | 5.0 | 2 | 224 | 448 |
| | 6 | 8.0 | 2 | 235 | 470 |
| | 7 | 8.0 | 2 | 265 | 530 |
| | 8 | 8.0 | 8 | 360 | 2880 |
| | 9 | 8.0 | 4 | 375 | 1500 |
| | 10 | 8.0 | 4 | 392 | 1568 |
| | 11 | 8.0 | 4 | 565 | 2260 |
| | 12 | 8.0 | 4 | 581 | 2324 |
| | 13 | 8.0 | 8 | 75 | 600 |
| | 14 | 8.0 | 4 | 1095 | 4380 |
| | 15 | 8.0 | 4 | 368 | 1472 |
| | 16 | 8.0 | 2 | 231 | 462 |
| | 17 | 8.0 | 2 | 247 | 494 |
| | 18 | 8.0 | 4 | 870 | 3480 |
| | 19 | 8.0 | 2 | 878 | 1756 |
| | 20 | 8.0 | 2 | 80 | 160 |
| | 21 | 8.0 | 2 | 93 | 186 |
| | 22 | 8.0 | 6 | 340 | 2040 |
| | 23 | 8.0 | 2 | 367 | 734 |
| | 24 | 8.0 | 2 | 750 | 1500 |
| | 25 | 8.0 | 2 | 766 | 1532 |
| | 26 | 10.0 | 4 | 360 | 1440 |
| | 27 | 10.0 | 2 | 375 | 750 |
| | 28 | 10.0 | 2 | 168 | 336 |
| | 29 | 10.0 | 2 | 498 | 996 |

RESUMO DO AÇO

| ACO | DIAM (mm) | C.TOTAL (m) | PESO + 10% (kg) |
|-----------------|-----------|-------------|-----------------|
| CA50 | 8.0 | 303.3 | 131.6 |
| CA60 | 10.0 | 35.2 | 23.9 |
| CA60 | 5.0 | 432.2 | 73.3 |
| PESO TOTAL (kg) | | | |
| CA50 | | 155.5 | |
| CA60 | | 73.3 | |

Volume de concreto (C-30) = 3.84 m³
Área de forma = 67.30 m²

| | | |
|---|---|----------------|
| REV. 00 27/08/21 EMISSÃO INICIAL | | DAC |
| REVISÃO DATA: DESCRIÇÃO: | | RESP.: |
|  | | |
|  Rua Miguel Viana, n.º 81, Sala 12 Bairro Morro Chic CEP: 37500-080 - Itajubá / MG Tel: (35) 3623-5720 www.dacengenharia.com.br | GERÊNCIA DE PROJETOS PEDRO HENRIQUE JUSTINIANO ENO CIVIL COORDENAÇÃO DE PROJETOS ALDOISO CAETANO FERREIRA CREA-MG-97.132/D RESPONSÁVEL TÉCNICO ENO FLÁVIA CRISTINA BARBOSA CREA-MG-187.842/D PROJETO WILLIAM BARADEL LARI DESENHO WILLIAM BARADEL LARI | |
| EMPREENDIMENTO CONSTRUÇÃO DA UBS VERGANI | | |
| ENDEREÇO AV. JOÃO FERREIRA DE FREITAS, BAIRRO VERGANI POUSO ALEGRE - MINAS GERAIS | DISCIPLINA ESTRUTURAL | |
| ASSUNTO PROJETO ESTRUTURAL EM CONCRETO ARMADO DETALHAMENTO DAS VIGAS | FASE DO PROJETO EXECUTIVO | |
| | FOLHA Nº. 13/20 | |
| DATA INICIAL 02/08/2021 | ESCALA INDICADA | REVISÃO R00 |
| | ARQUIVO DAC-PMPA-VER-EST-PE-R00.DWG | |