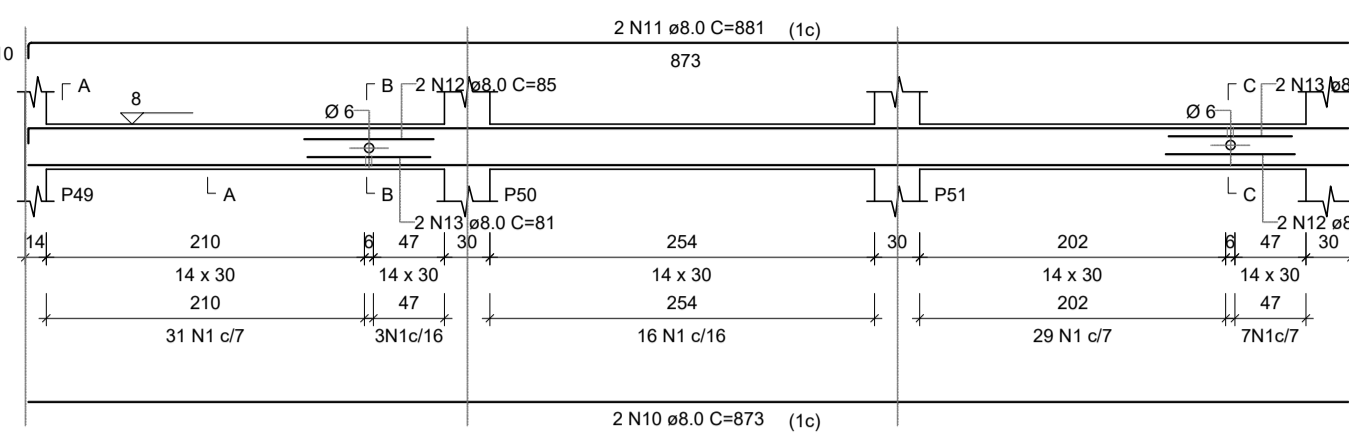


PROJETO ESTRUTURAL - CONSTRUÇÃO DA UBS VERGANI

Escala indicada

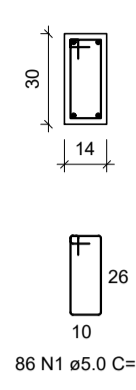
VB21

Escala 1:50



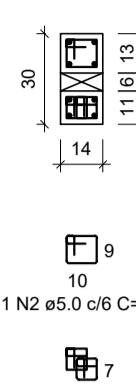
SEÇÃO A-A

Escala 1:25



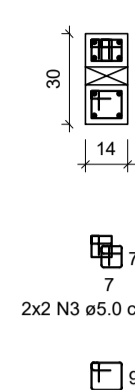
SEÇÃO B-B

Escala 1:25



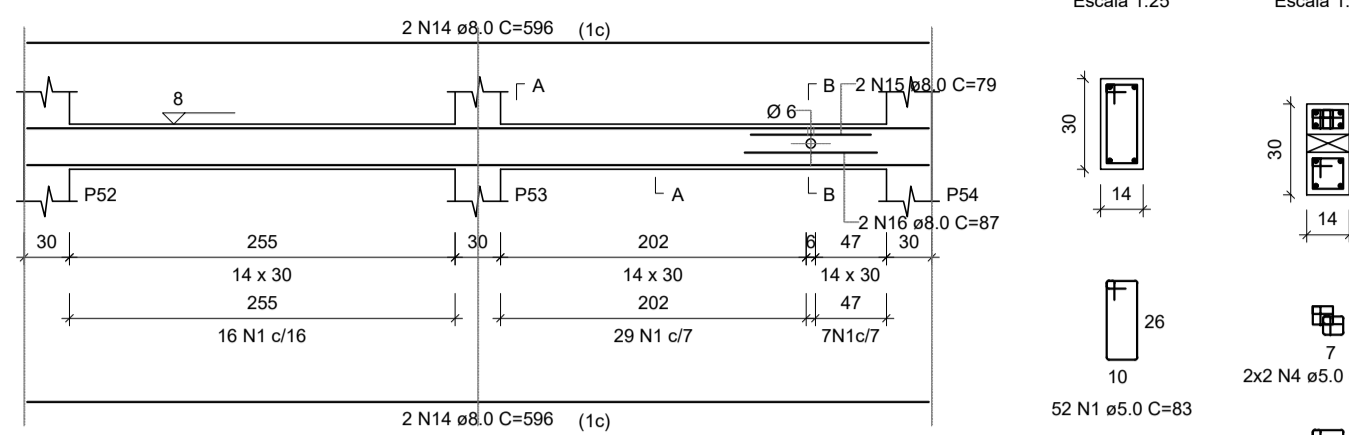
SEÇÃO C-C

Escala 1:25



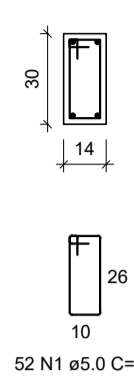
VB22

Escala 1:50



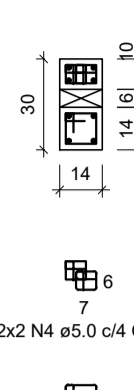
SEÇÃO A-A

Escala 1:25



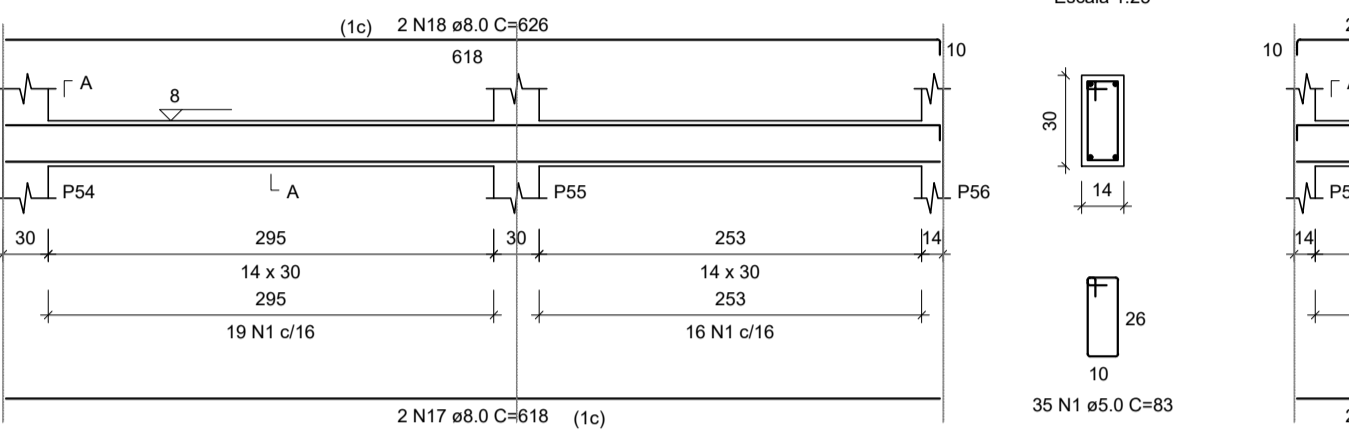
SEÇÃO B-B

Escala 1:25



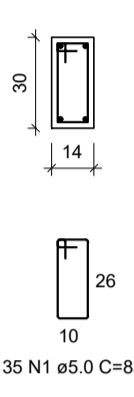
VB23

Escala 1:50



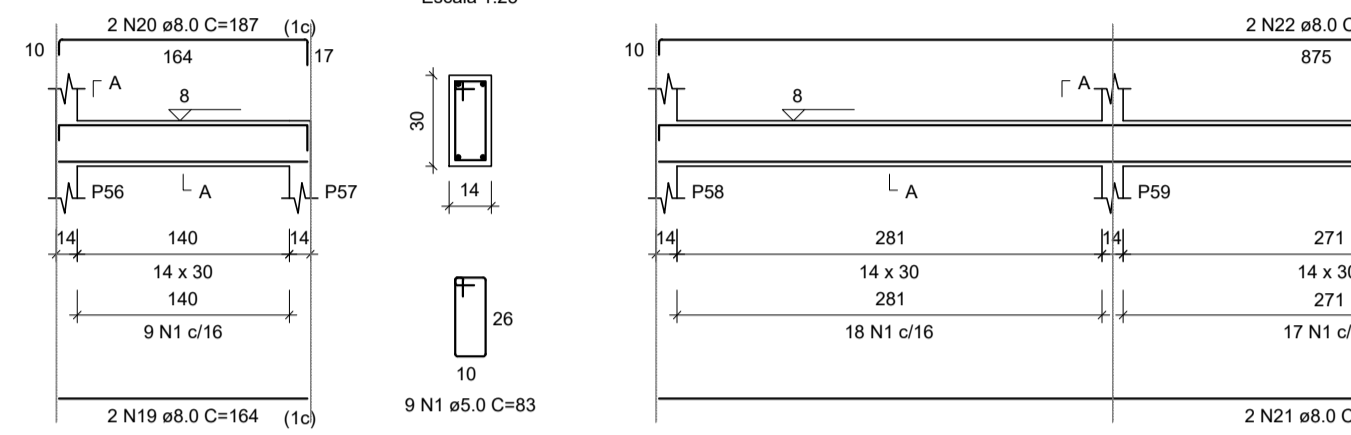
SEÇÃO A-A

Escala 1:25



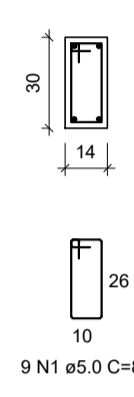
VB24

Escala 1:50



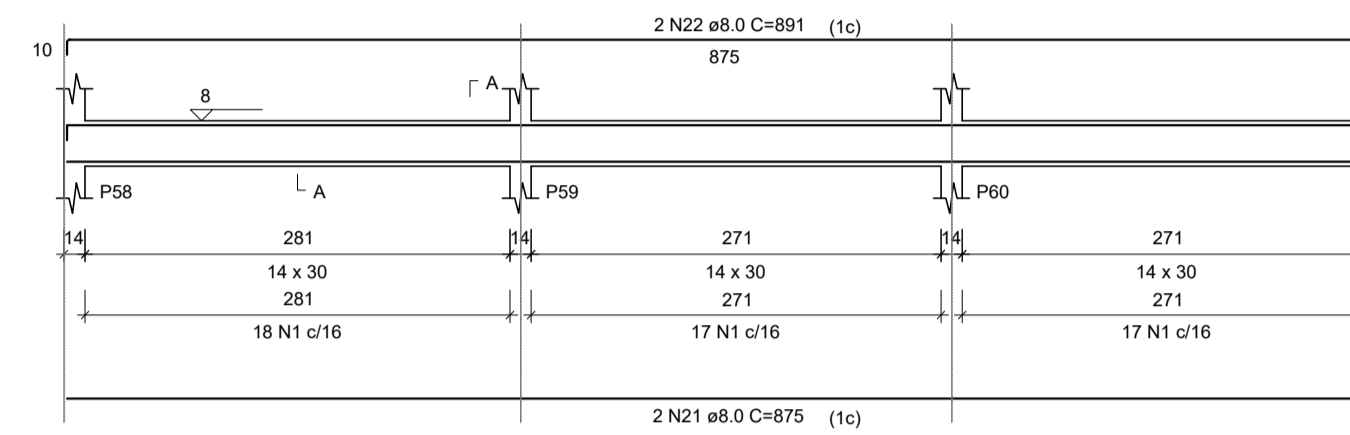
SEÇÃO A-A

Escala 1:25



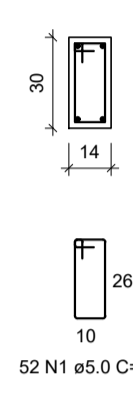
VB25

Escala 1:50



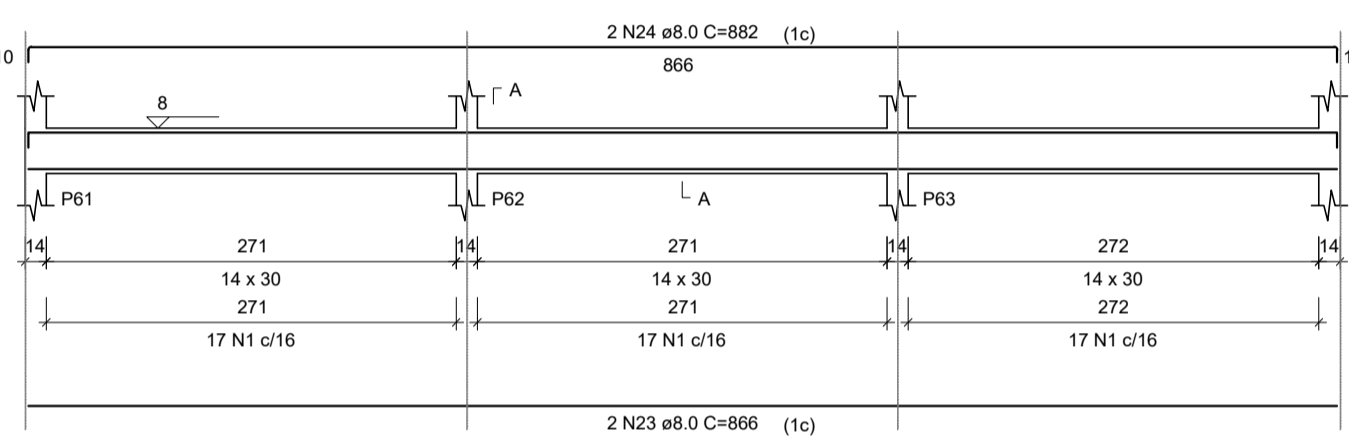
SEÇÃO A-A

Escala 1:25



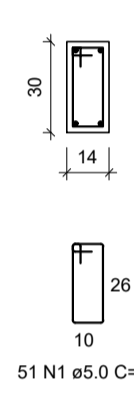
VB26

Escala 1:50



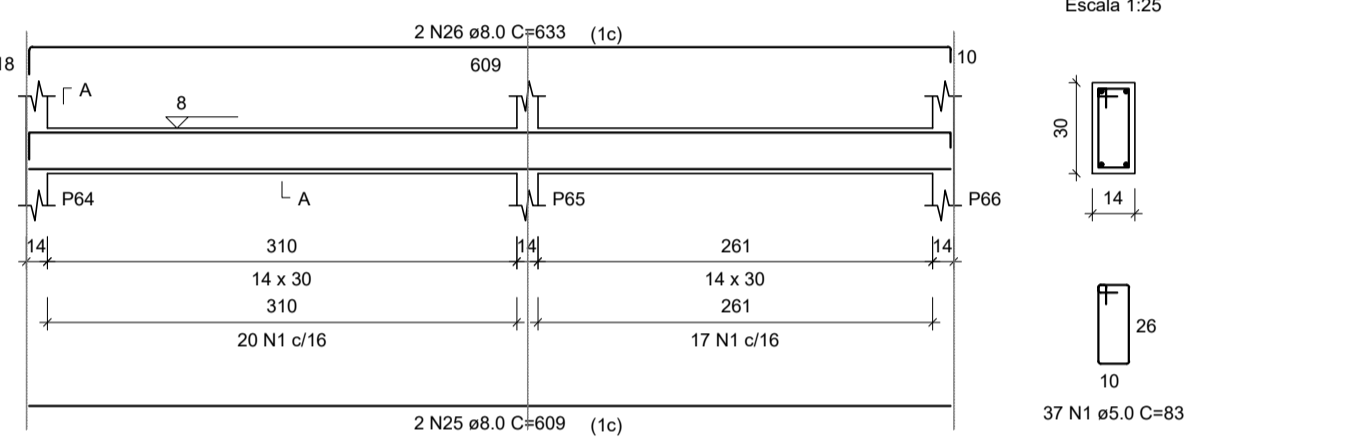
SEÇÃO A-A

Escala 1:25



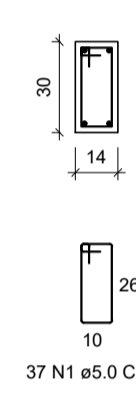
VB27

Escala 1:50



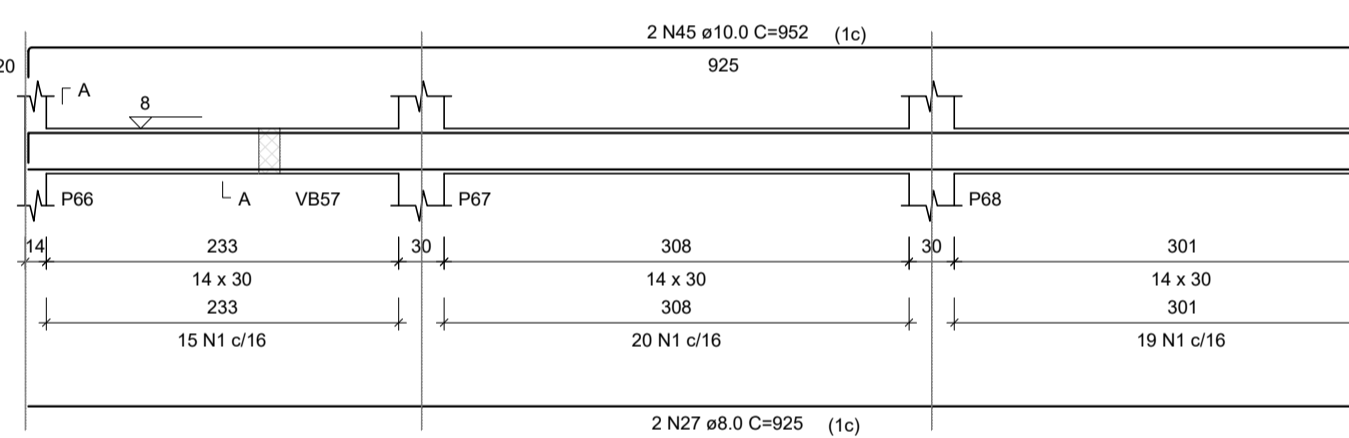
SEÇÃO A-A

Escala 1:25



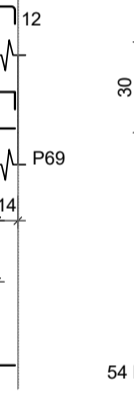
VB28

Escala 1:50



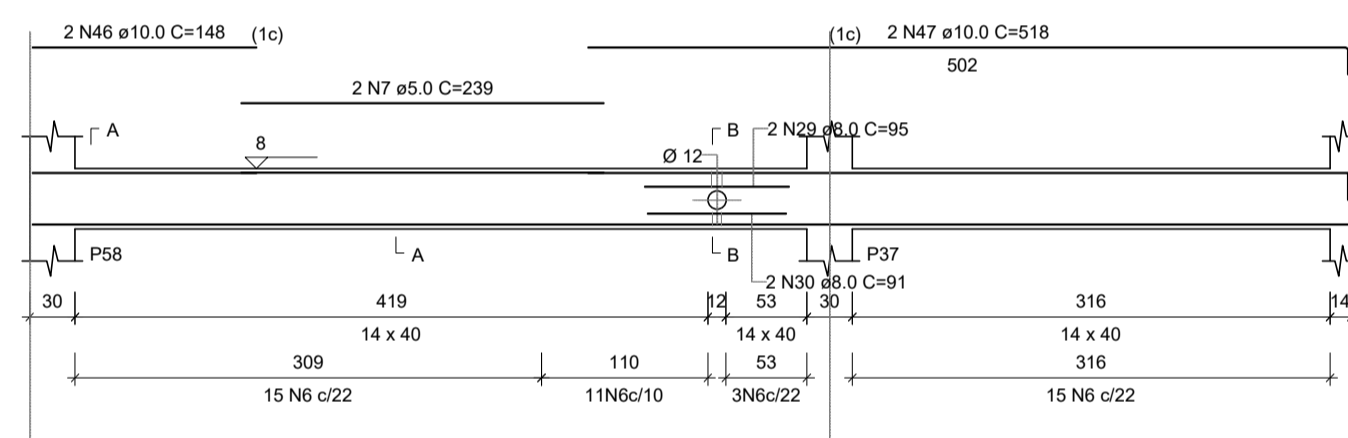
SEÇÃO A-A

Escala 1:25



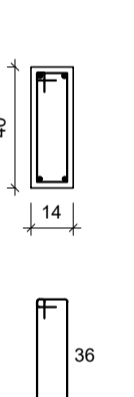
VB29

Escala 1:50



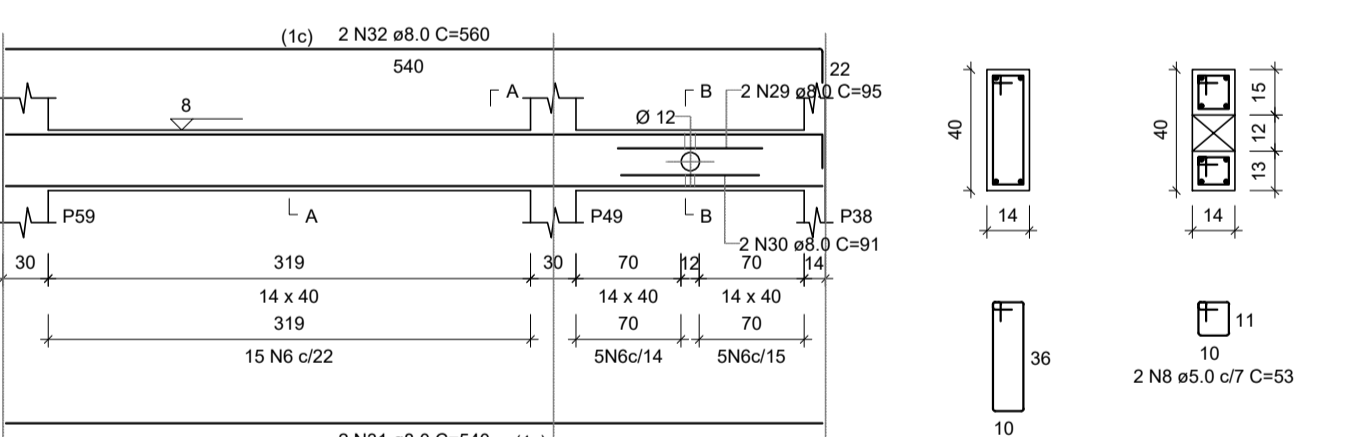
SEÇÃO A-A

Escala 1:25



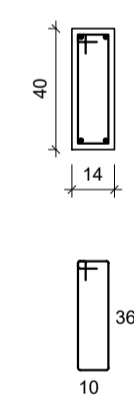
VB30

Escala 1:50



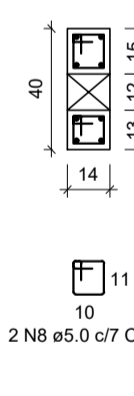
SEÇÃO A-A

Escala 1:25



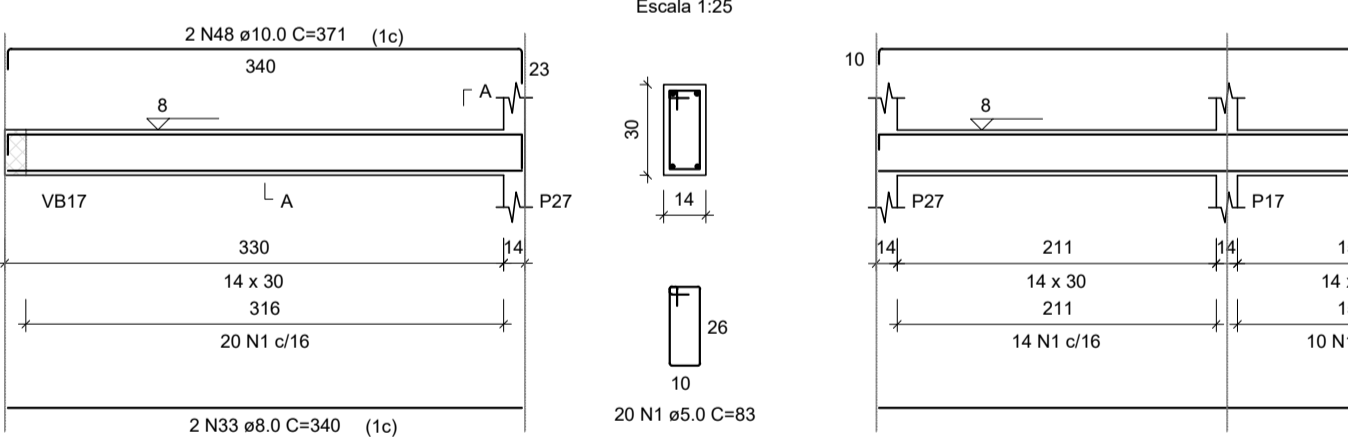
SEÇÃO B-B

Escala 1:25



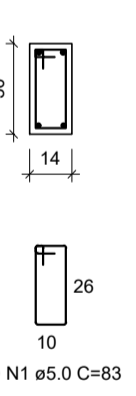
VB31

Escala 1:50



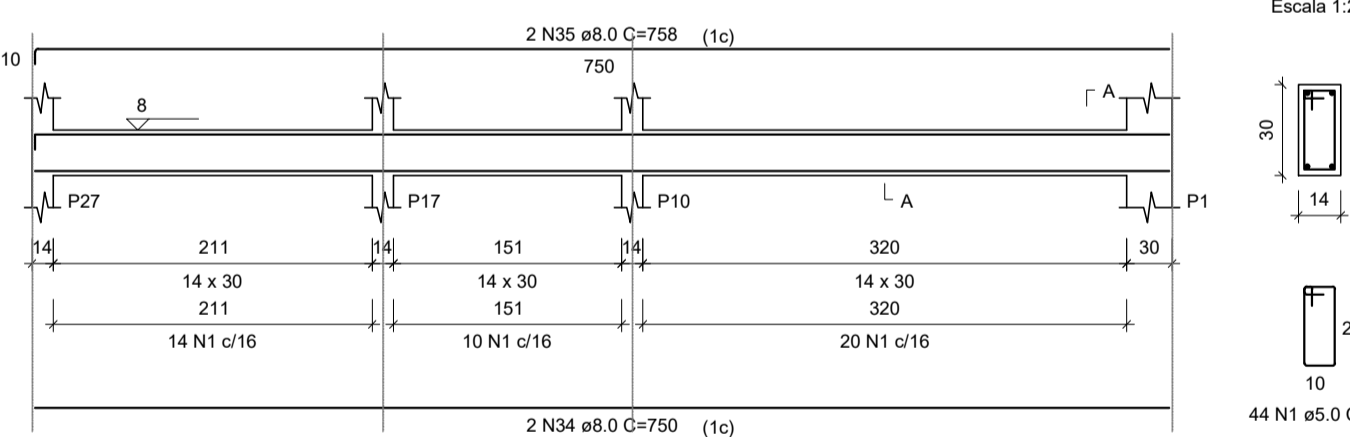
SEÇÃO A-A

Escala 1:25



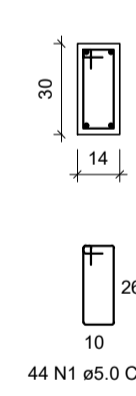
VB32

Escala 1:50



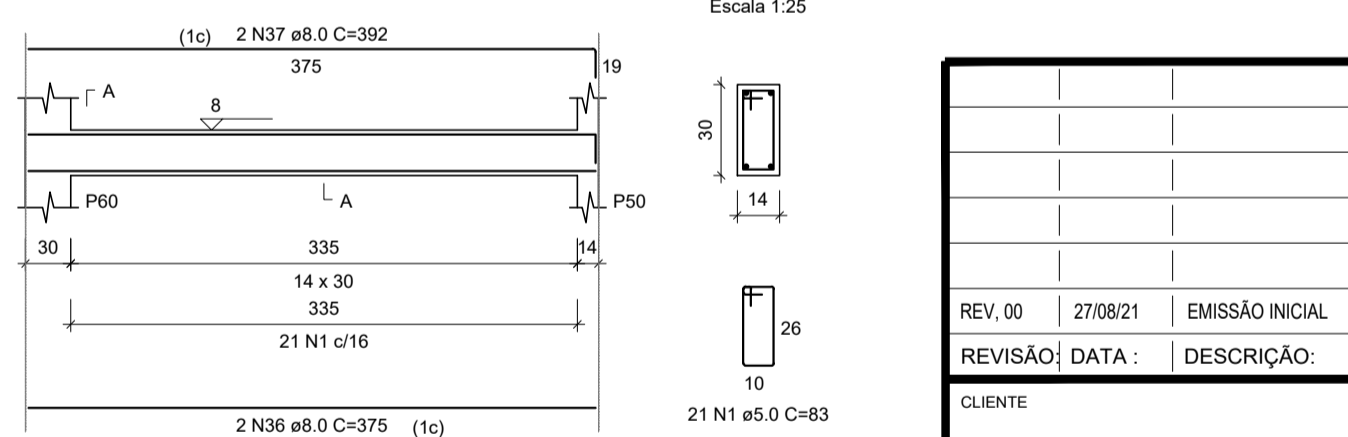
SEÇÃO A-A

Escala 1:25



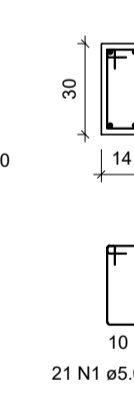
VB33

Escala 1:50



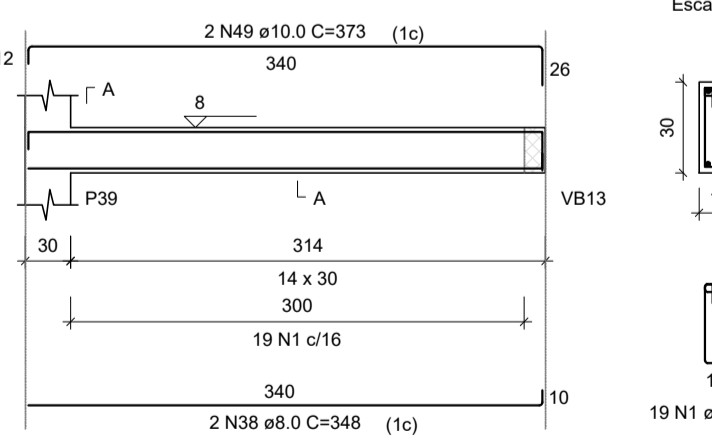
SEÇÃO A-A

Escala 1:25



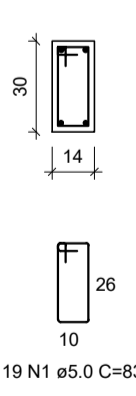
VB34

Escala 1:50



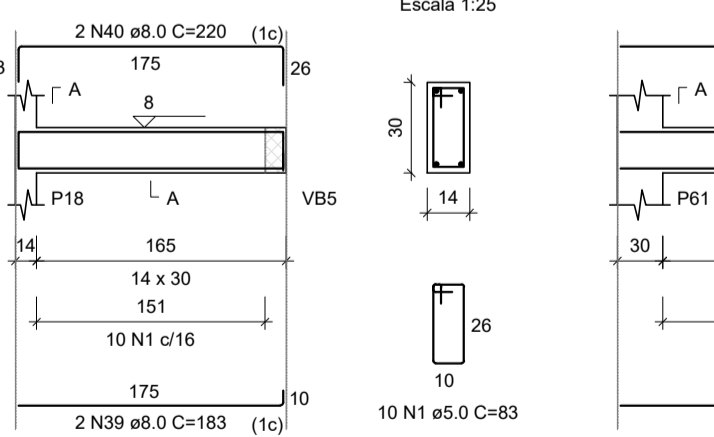
SEÇÃO A-A

Escala 1:25



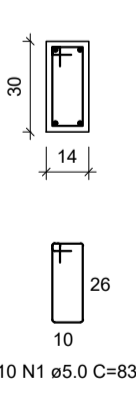
VB35

Escala 1:50



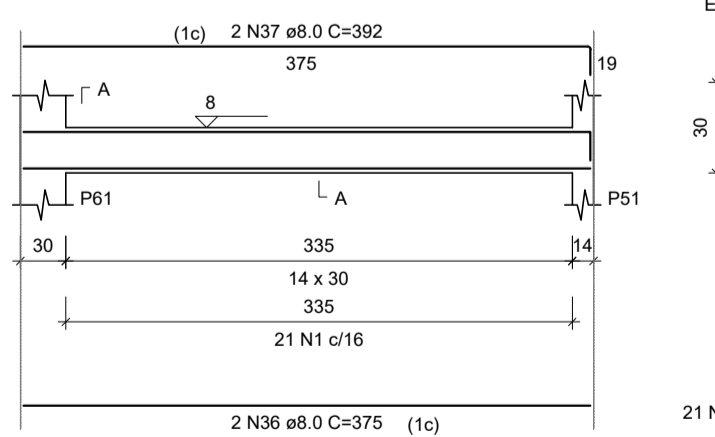
SEÇÃO A-A

Escala 1:25



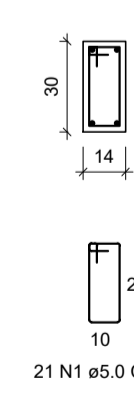
VB36

Escala 1:50



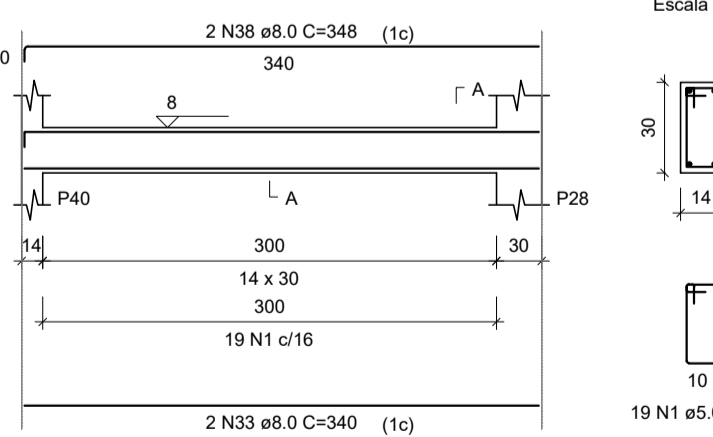
SEÇÃO A-A

Escala 1:25



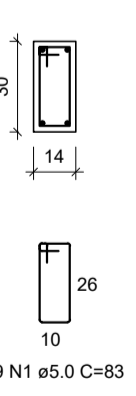
VB37

Escala 1:50



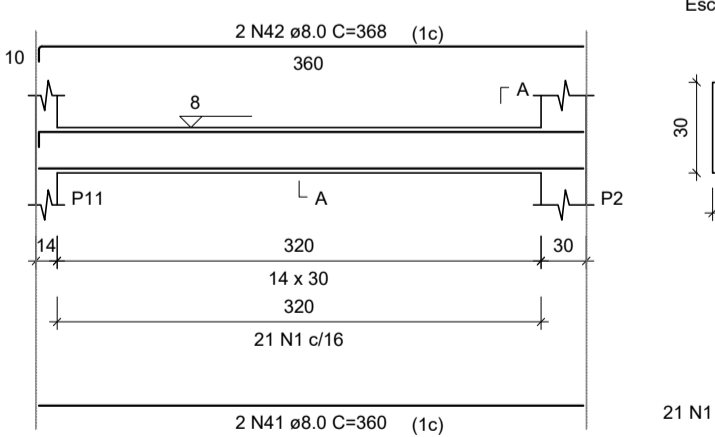
SEÇÃO A-A

Escala 1:25



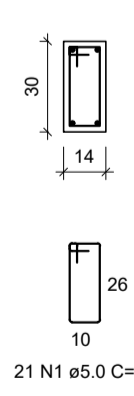
VB38

Escala 1:50



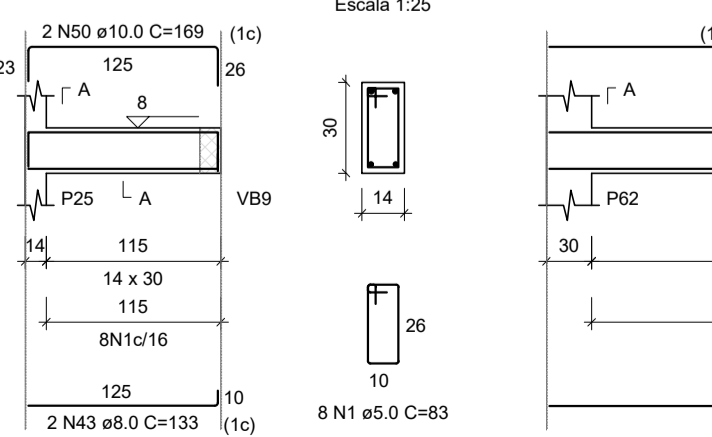
SEÇÃO A-A

Escala 1:25



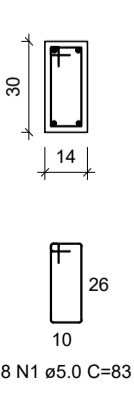
VB39

Escala 1:50



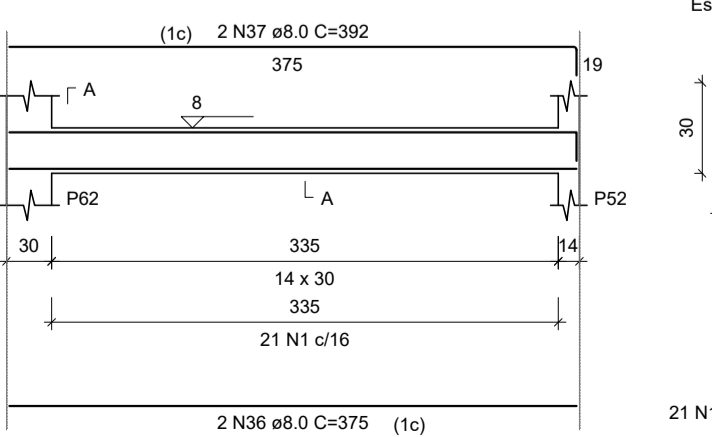
SEÇÃO A-A

Escala 1:25



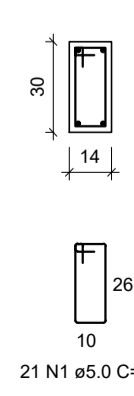
VB40

Escala 1:50



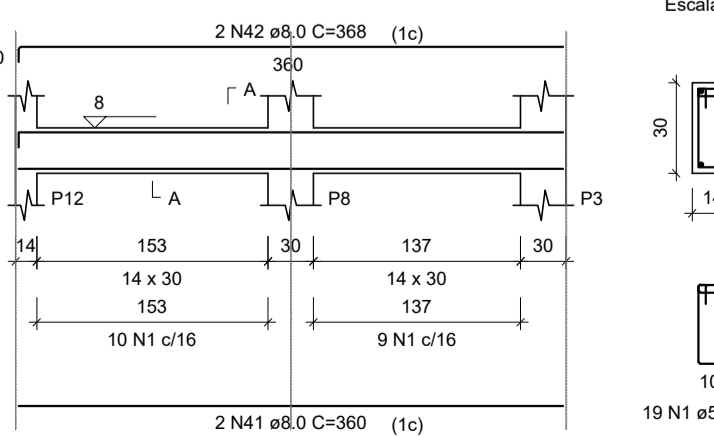
SEÇÃO A-A

Escala 1:25



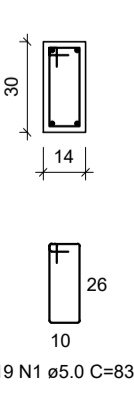
VB41

Escala 1:50



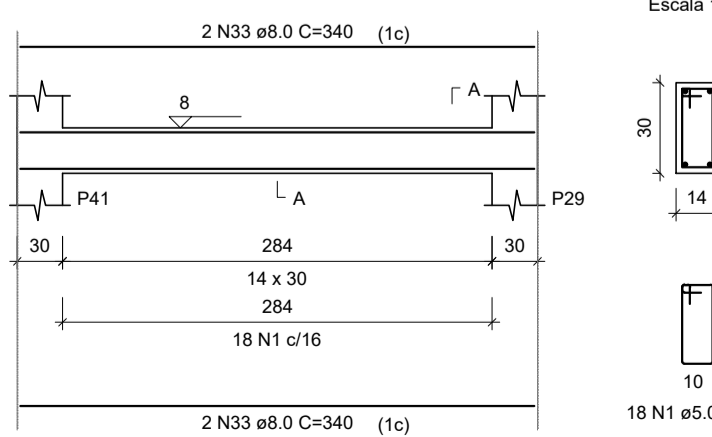
SEÇÃO A-A

Escala 1:25



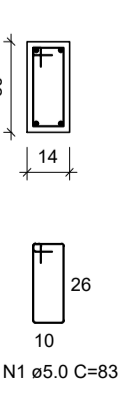
VB42

Escala 1:50



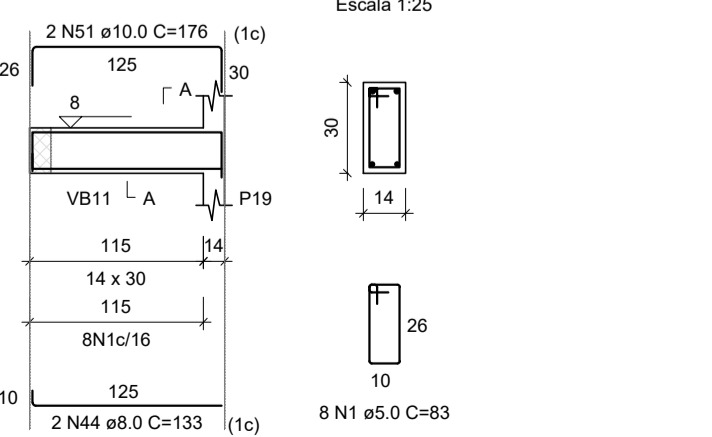
SEÇÃO A-A

Escala 1:25



VB43

Escala 1:50



SEÇÃO A-A

Escala 1:25



RELAÇÃO DO AÇO

CAÇO	N	DIAM (mm)	QUANT	C.UNIT (cm)	C.TOTAL (cm)
CA60	1	5.0	625	83	51875
	2	5.0	4	96	384
	3	5.0	8	39	312
	4	5.0	4	37	148
	5	5.0	1	51	51
	6	5.0	69	103	7107
	7	5.0	2	239	478
	8	5.0	4	53	212
	9	5.0	4	43	172
	10	8.0	2	873	1746
	11	8.0	2	881	1762
	12	8.0	2	85	340
	13	8.0	4	81	324
	14	8.0	4	596	2384
	15	8.0	2	79	158
	16	8.0	2	87	174
	17	8.0	2	618	1236
	18	8.0	2	626	1252
	19	8.0	2	164	328
	20	8.0	2	187	374
	21	8.0	2	875	1750
	22	8.0	2	891	1782
	23	8.0	2	866	1732
	24	8.0	2	882	1764
	25	8.0	2	609	1218
	26	8.0	2	633	1266
	27	8.0	2	925	1850
	28	8.0	2	870	1740
	29	8.0	4	95	380
	30	8.0	4	91	364
	31	8.0	2	540	1080
	32	8.0	2	560	1120
	33	8.0	8	340	2720
	34	8.0	2	750	1500
	35	8.0	2	758	1516
	36	8.0	6	375	2250
	37	8.0	6	392	2352
	38	8.0	4	348	1392
	39	8.0	2	183	366
	40	8.0	2	220	440
	41	8.0	4	360	1440
	42	8.0	4	368	1472
	43	8.0	2	133	266
	44	8.0	2	133	266
	45	10.0	2	952	1904
	46	10.0	2	148	296
	47	10.0	2	518	1036
	48	10.0	2	371	742
	49	10.0	2	373	746
	50	10.0	2	169	338
	51	10.0	2	176	352

RESUMO DO AÇO

CAÇO	DIAM (mm)	C.TOTAL (m)	PESO + 10% (kg)
CA50	8.0	421	182.7
CA60	10.0	54.1	36.7
	5.0	605.5	102.7
PESO TOTAL (kg)			
CA50			219.5
CA60			102.7

Volume de concreto (C-30) = 4.99 m³
Área de forma = 87.26 m²



REV. 00	27/08/21	EMISSÃO INICIAL	DAC
REVISÃO	DATA	DESCRIÇÃO	RESP.

DAC Engenharia

Rua Miguel Viana, nº 81, Sala 12
Bairro Morro Chic
CEP: 37500-080 - Itajubá / MG
Tel: (35) 3623-5720
www.dacengenharia.com.br

GERÊNCIA DE PROJETOS: PEDRO HENRIQUE JUSTINIANO ENO CIVIL
COORDENAÇÃO DE PROJETOS: ALOISIO CAETANO FERREIRA CREA-MG-97.132/D
RESPONSÁVEL TÉCNICO: ENO FLÁVIA CRISTINA BARBOSA CREA-MG-187.842/D
PROJETO: WILLIAM BARADEL LARI
DESENHO: WILLIAM BARADEL LARI

CONSTRUÇÃO DA UBS VERGANI

ENDEREÇO: AV. JOÃO FERREIRA DE FREITAS, BAIRRO VERGANI
POUSO ALEGRE - MINAS GERAIS

ASSUNTO: PROJETO ESTRUTURAL EM CONCRETO ARMADO
DETALHAMENTO DAS VIGAS

DISCIPLINA: **ESTRUTURAL**
FASE DO PROJETO: **EXECUTIVO**
FOLHA Nº: **12/20**

DATA INICIAL: 02/08/2021 | ESCALA: INDICADA | REVISÃO: R00 | ARQUIVO: DAC-FMPA-VER-EST-PE-R00.DWG