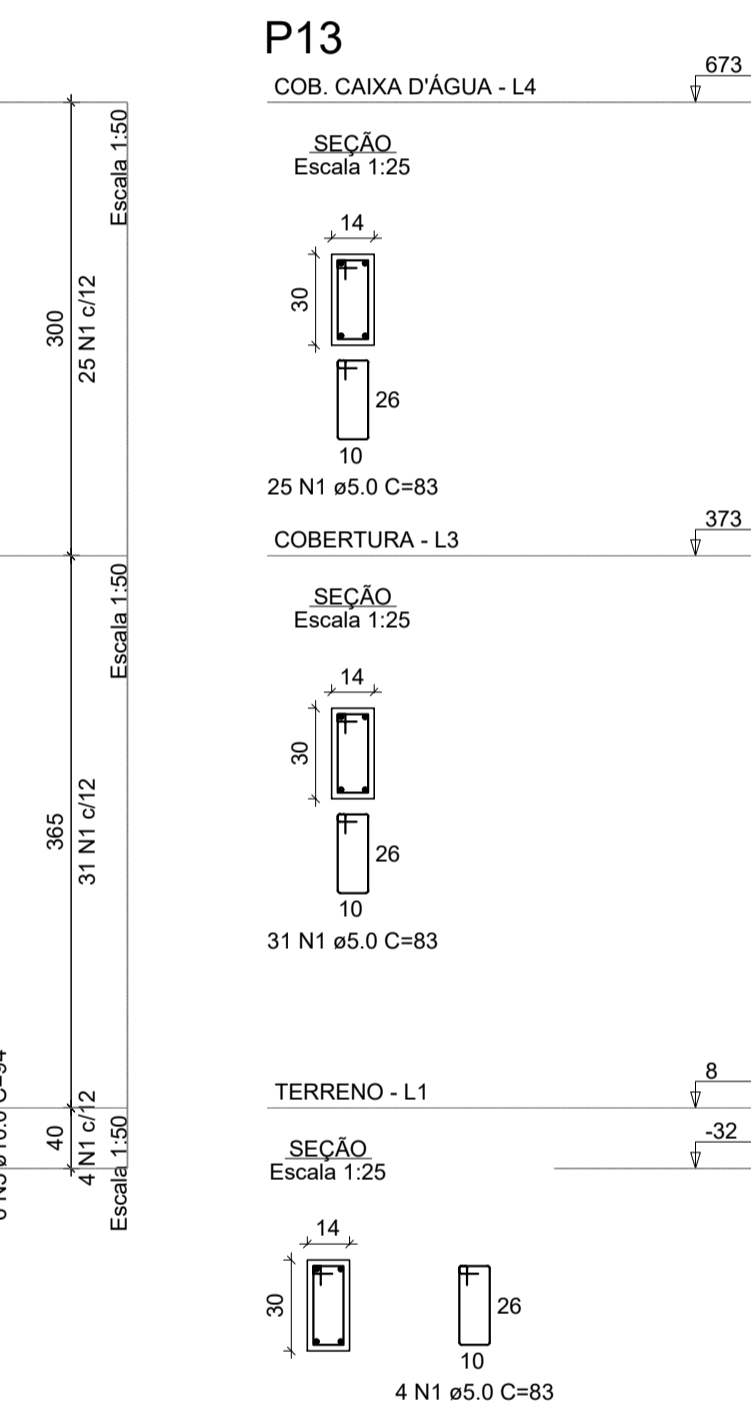
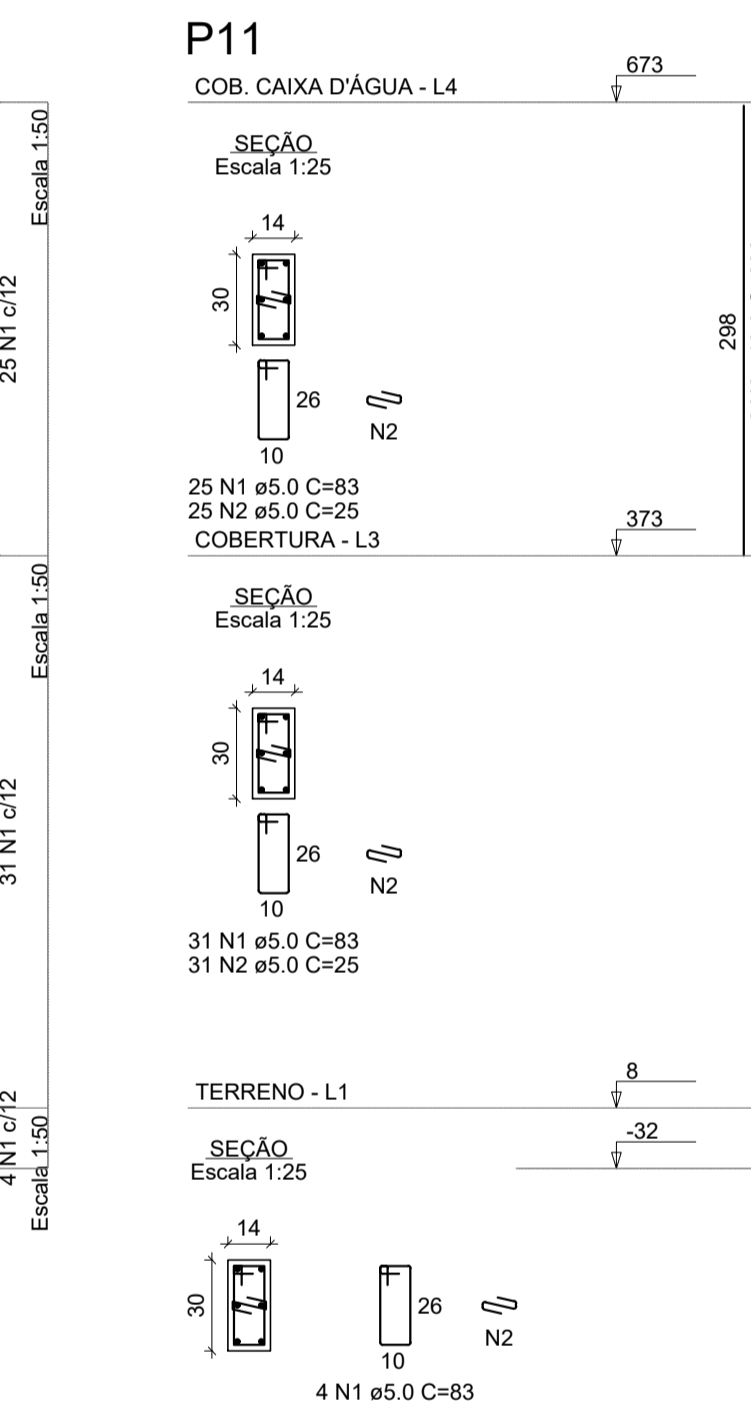
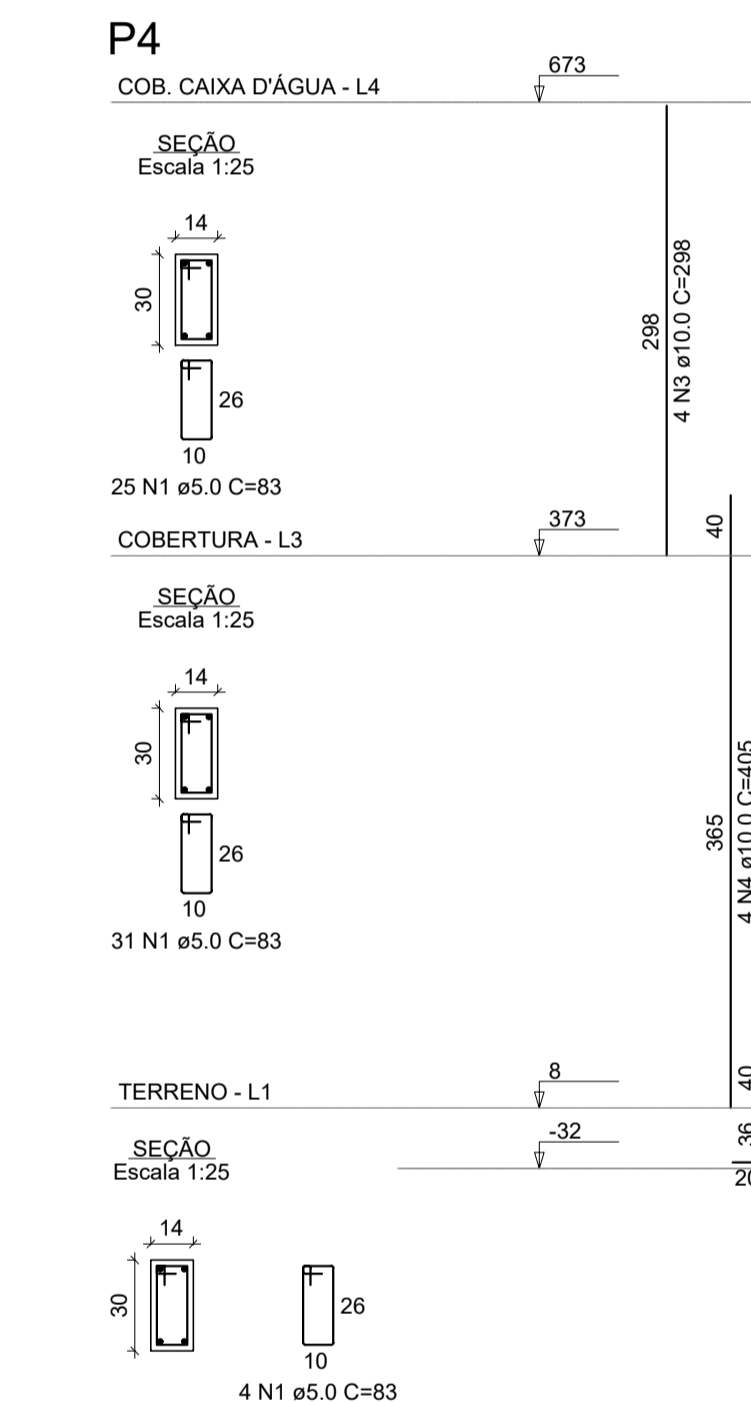
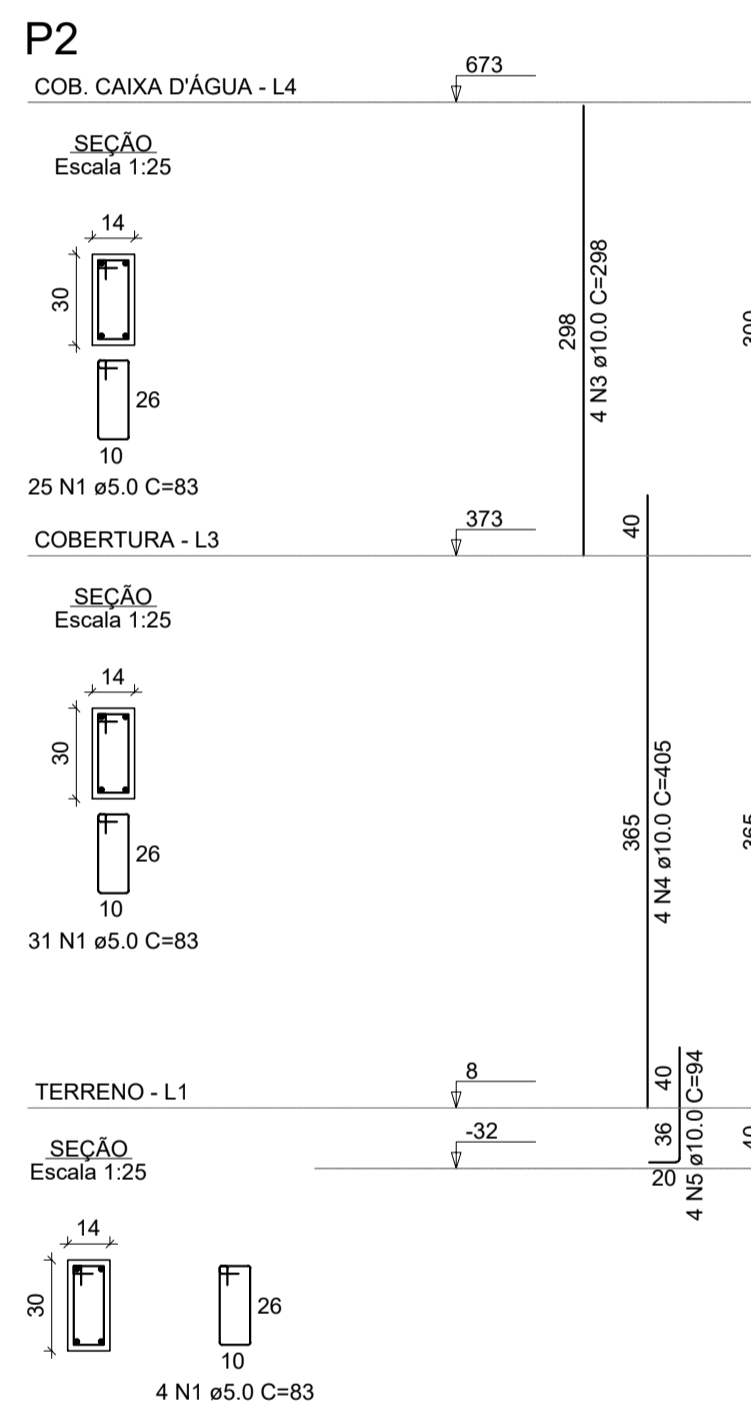
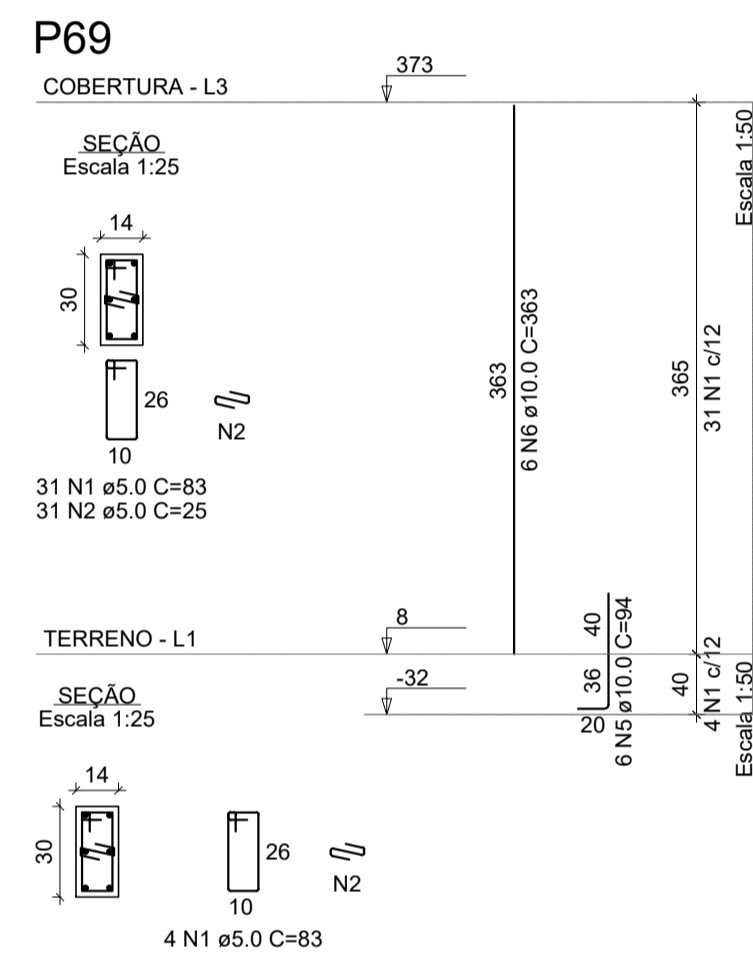
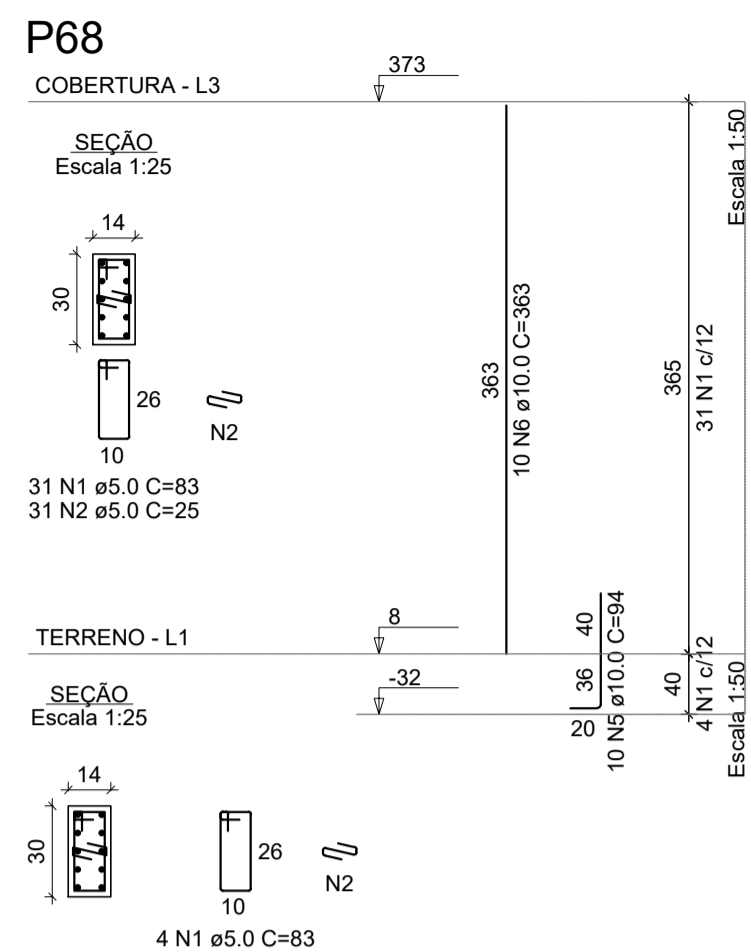
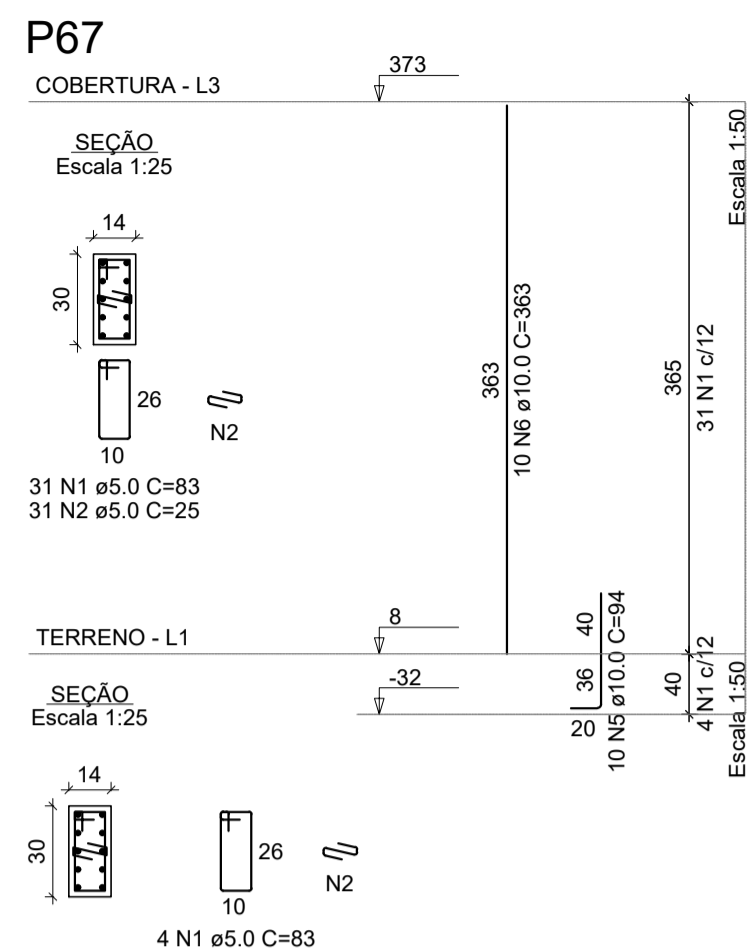
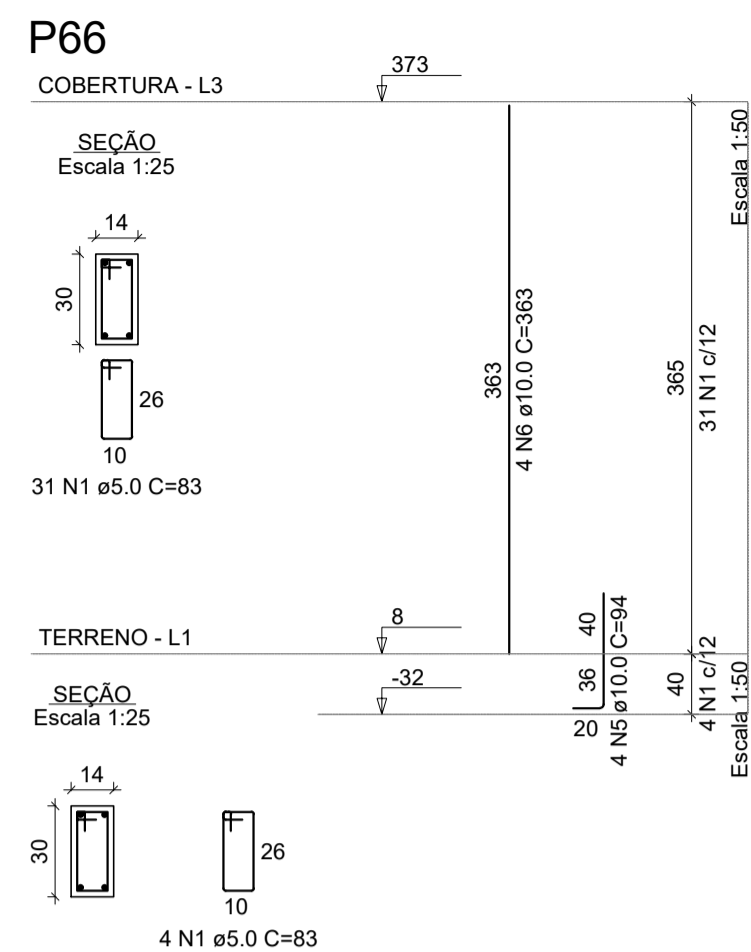
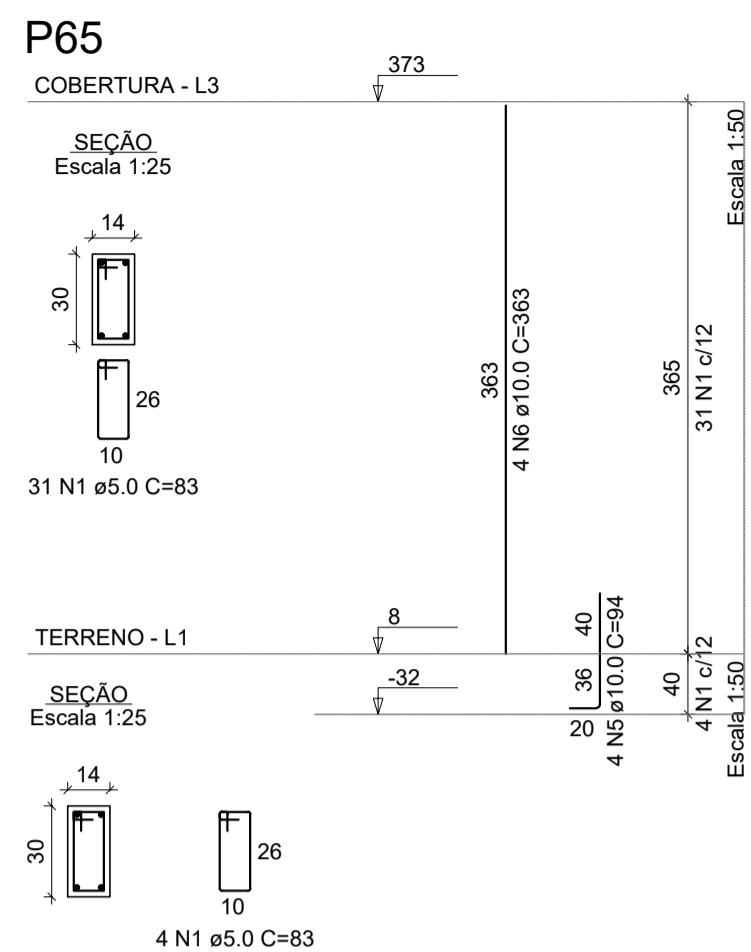
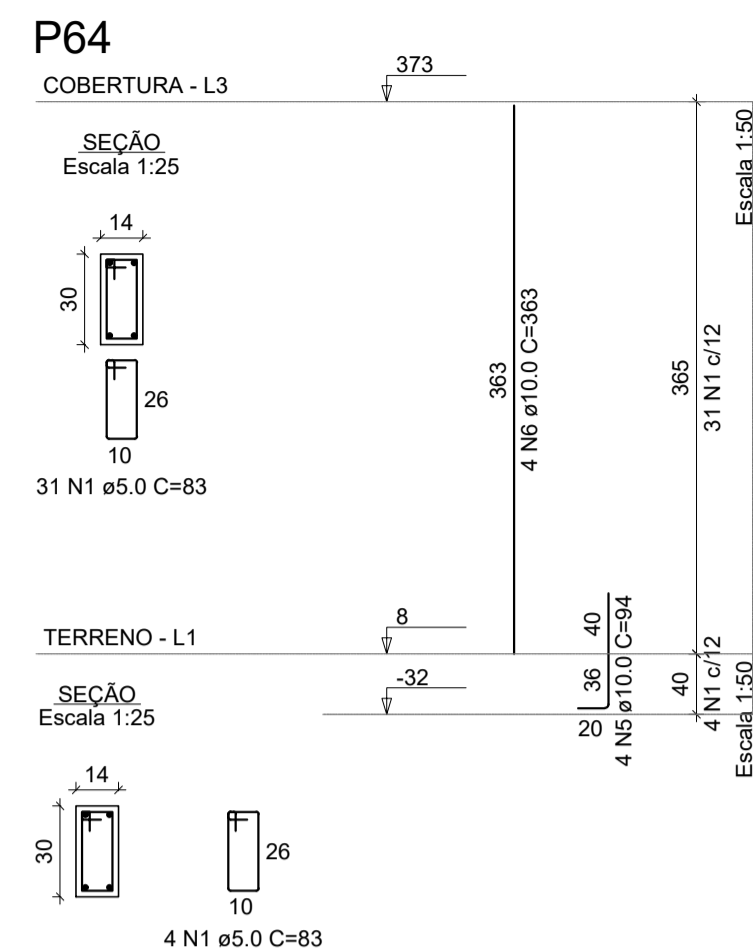


PROJETO ESTRUTURAL - CONSTRUÇÃO DA UBS VERGANI

Escala indicada



RELAÇÃO DO AÇO					
AÇO	N	DIAM (mm)	QUANT	C.TOTAL (cm)	C.TOTAL (cm)
CA60	1	5.0	450	83	37350
CA50	2	5.0	165	25	4125
	3	10.0	18	298	5364
	4	10.0	18	405	7290
	5	10.0	56	94	5264
	6	10.0	38	363	13794

RESUMO DO AÇO			
AÇO	DIAM (mm)	C.TOTAL (m)	PESO + 10% (kg)
CA50	10.0	317.1	215.1
CA60	5.0	414.8	70.3
PESO TOTAL (kg)			215.1
CA50			215.1
CA60			70.3

Volume de concreto (C-30) = 2.21 m³
 Área de forma = 46.20 m²

REV. 00		27/08/21	EMISSÃO INICIAL	DAC
REVISÃO		DATA	DESCRIÇÃO	RESP.
				
		GERÊNCIA DE PROJETOS PEDRO HENRIQUE JUSTINIANO ENO CIVIL COORDENAÇÃO DE PROJETOS ALOISIO CAETANO FERREIRA CREA-MG-97.132/D RESPONSÁVEL TÉCNICO ENO FLÁVIA CRISTINA BARBOSA CREA-MG-187.842/D PROJETO WILLIAM BARADEL LARI DESENHO WILLIAM BARADEL LARI		
EMPREENDIMENTO CONSTRUÇÃO DA UBS VERGANI				
ENDEREÇO AV. JOÃO FERREIRA DE FREITAS, BAIRRO VERGANI POUSO ALEGRE - MINAS GERAIS		DISCIPLINA ESTRUTURAL FASE DO PROJETO EXECUTIVO		
ASSUNTO PROJETO ESTRUTURAL EM CONCRETO ARMADO DETALHAMENTO DOS PILARES		FOLHA Nº. 10/20		
DATA INICIAL	ESCALA	REVISÃO	ARQUIVO	
02/08/2021	INDICADA	R00	DAC-PMPA-VER-EST-PE-R00.DWG	