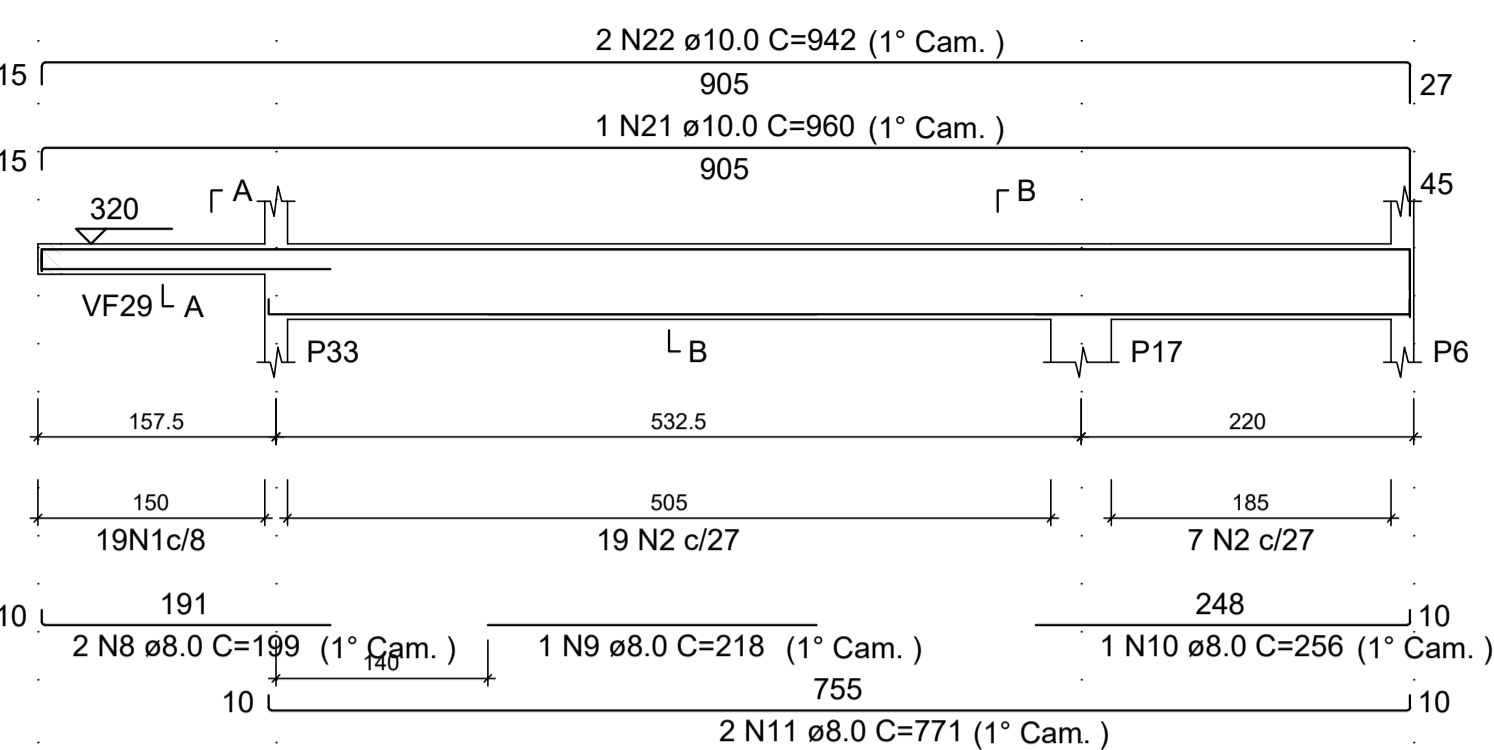


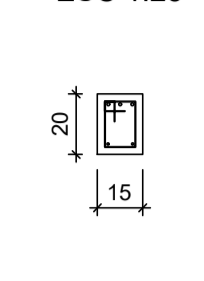
Detalhamento das Vigas - Forro

Escala indicada

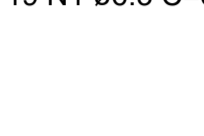
VF61
ESC 1:50



SEÇÃO A-A
ESC 1:25

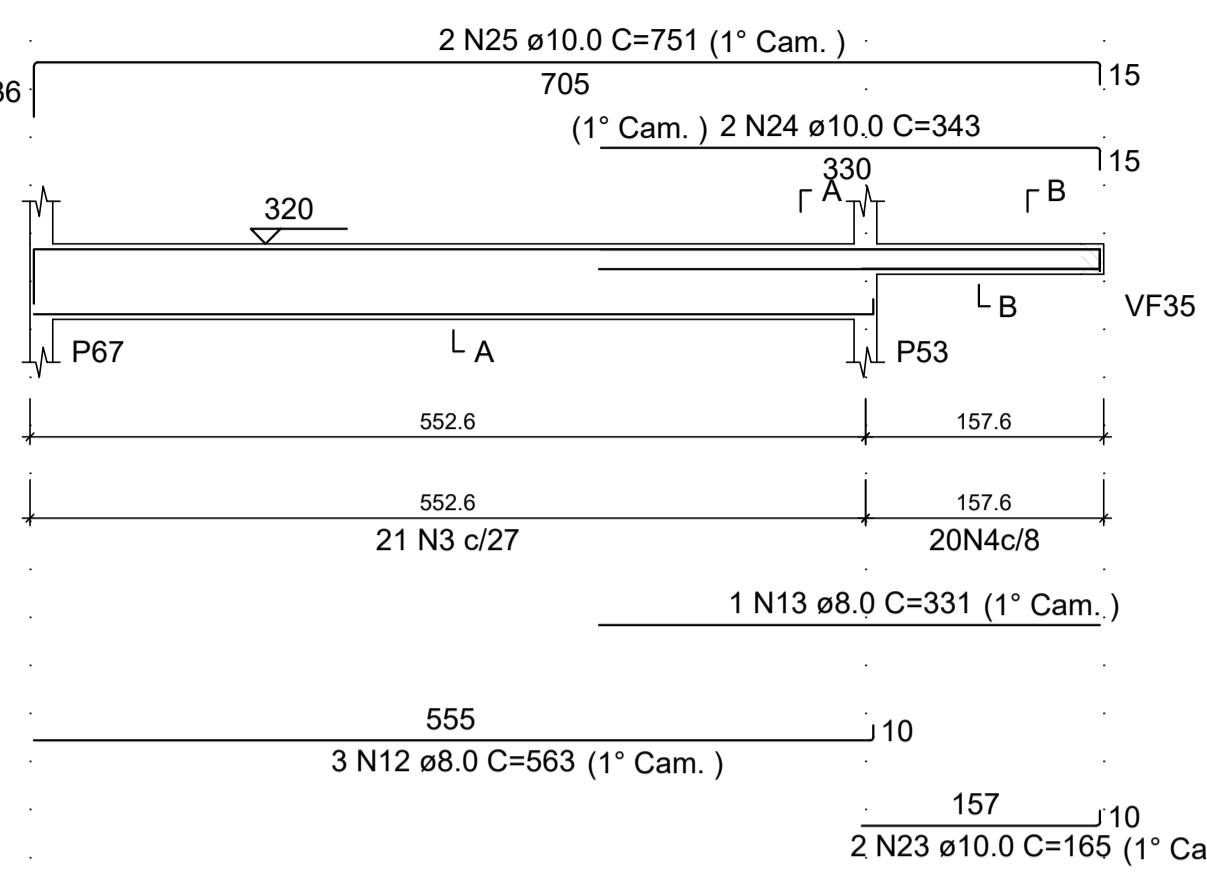


19 N1 ø6.3 C=62

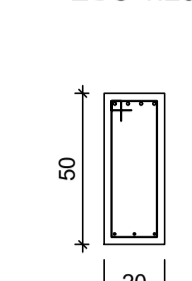


26 N2 ø6.3 C=122

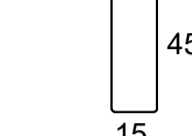
VF62
ESC 1:50



SEÇÃO A-A
ESC 1:25

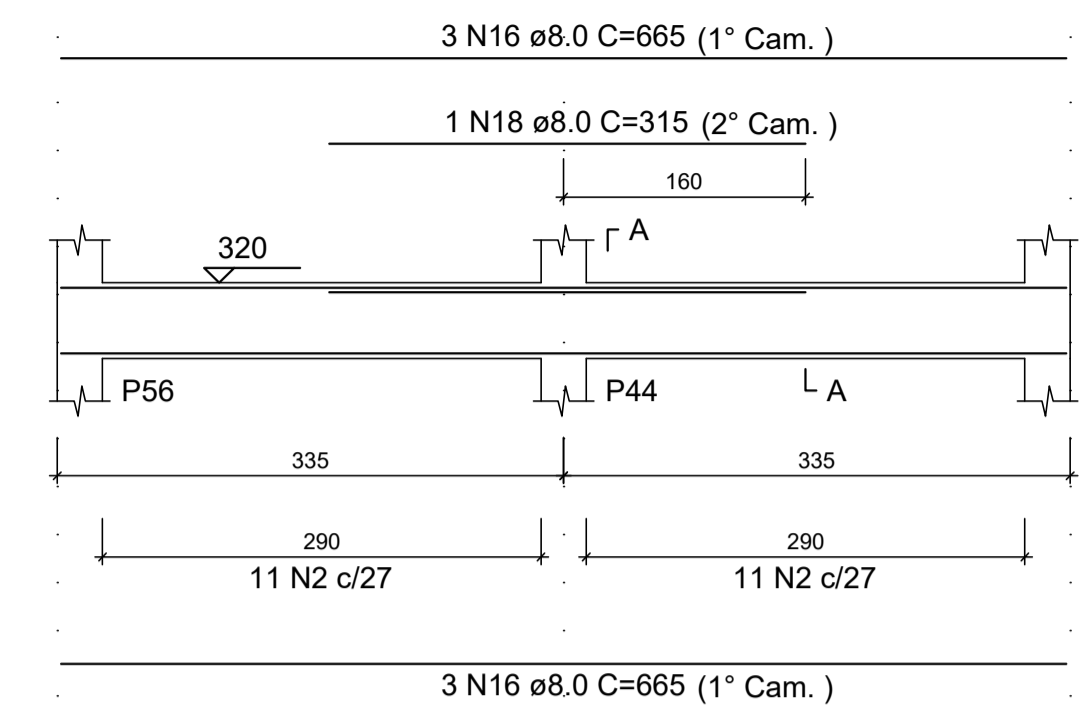


21 N3 ø6.3 C=132

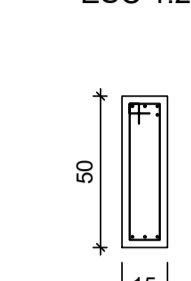


20 N4 ø6.3 C=72

VF67
ESC 1:50



SEÇÃO A-A
ESC 1:25

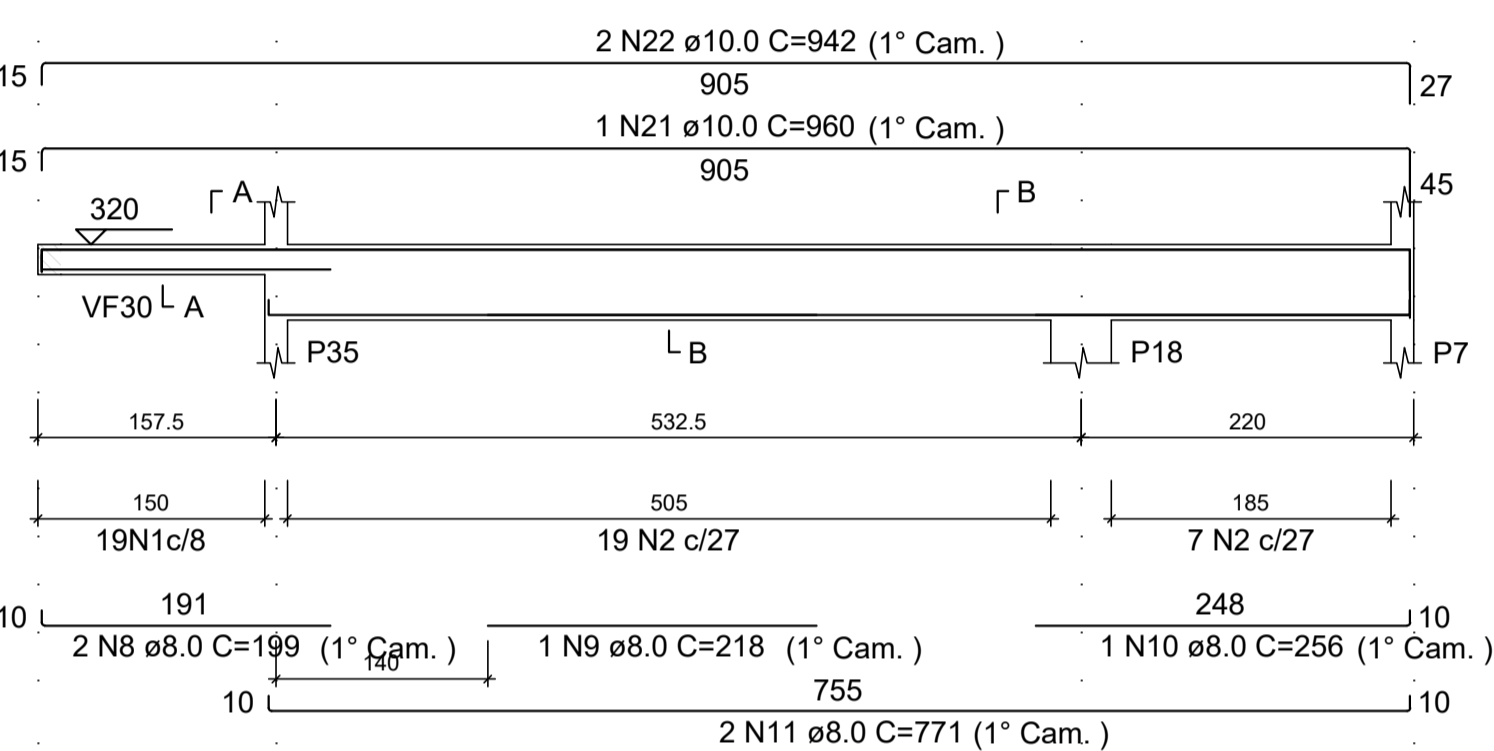


22 N2 ø6.3 C=122

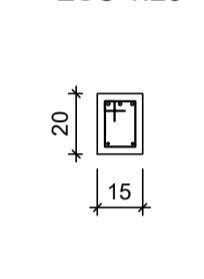


3 N16 ø8.0 C=665 (1° Cam.)

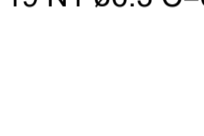
VF63
ESC 1:50



SEÇÃO A-A
ESC 1:25

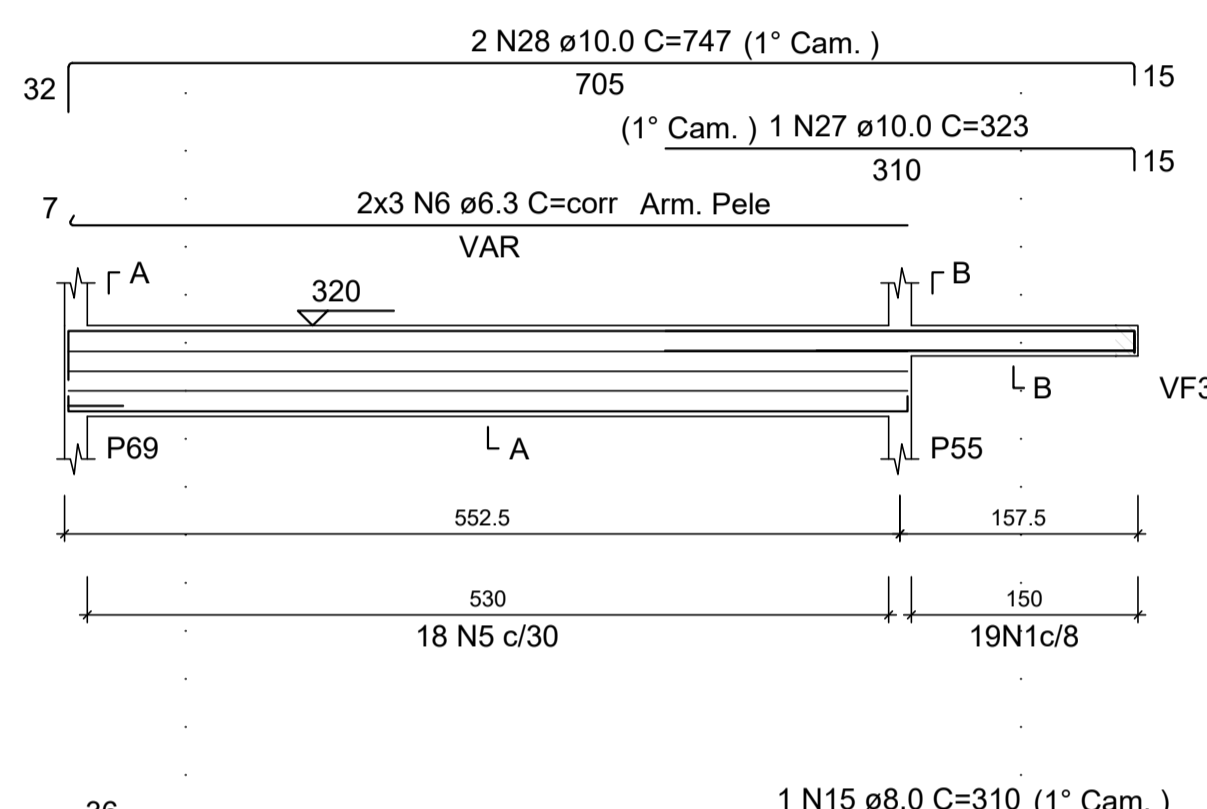


19 N1 ø6.3 C=62

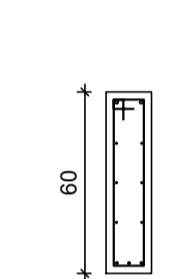


26 N2 ø6.3 C=122

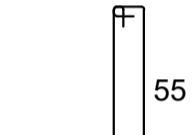
VF64
ESC 1:50



SEÇÃO A-A
ESC 1:25

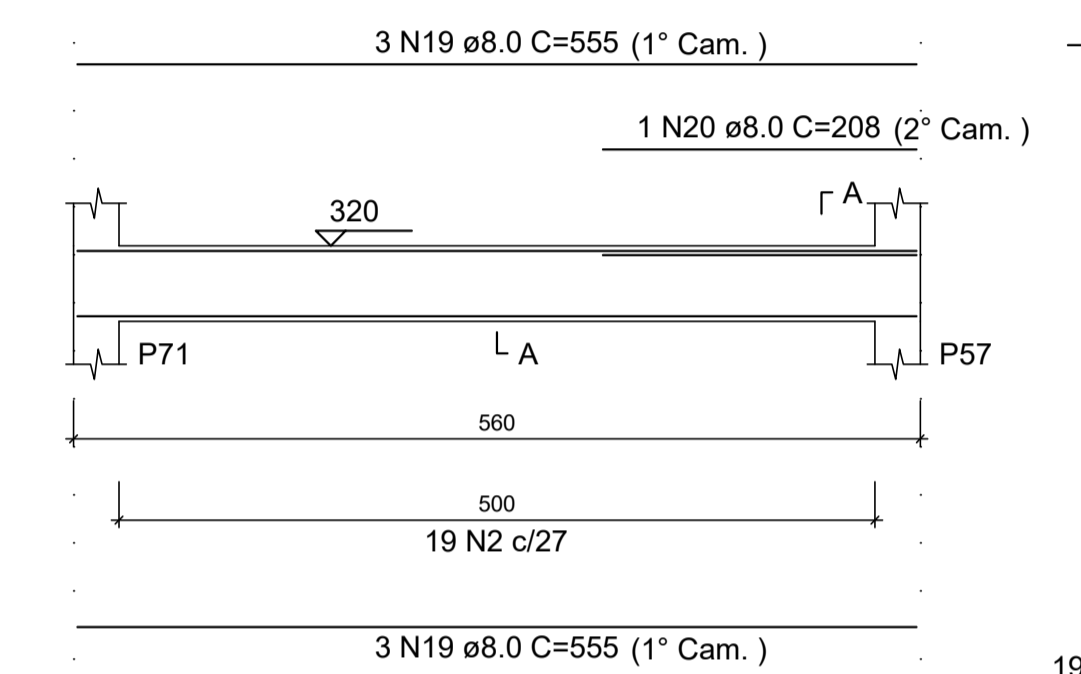


18 N5 ø6.3 C=142

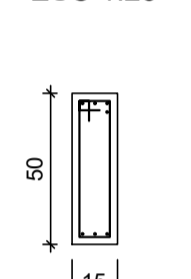


19 N1 ø6.3 C=62

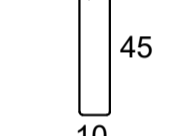
VF68
ESC 1:50



SEÇÃO A-A
ESC 1:25

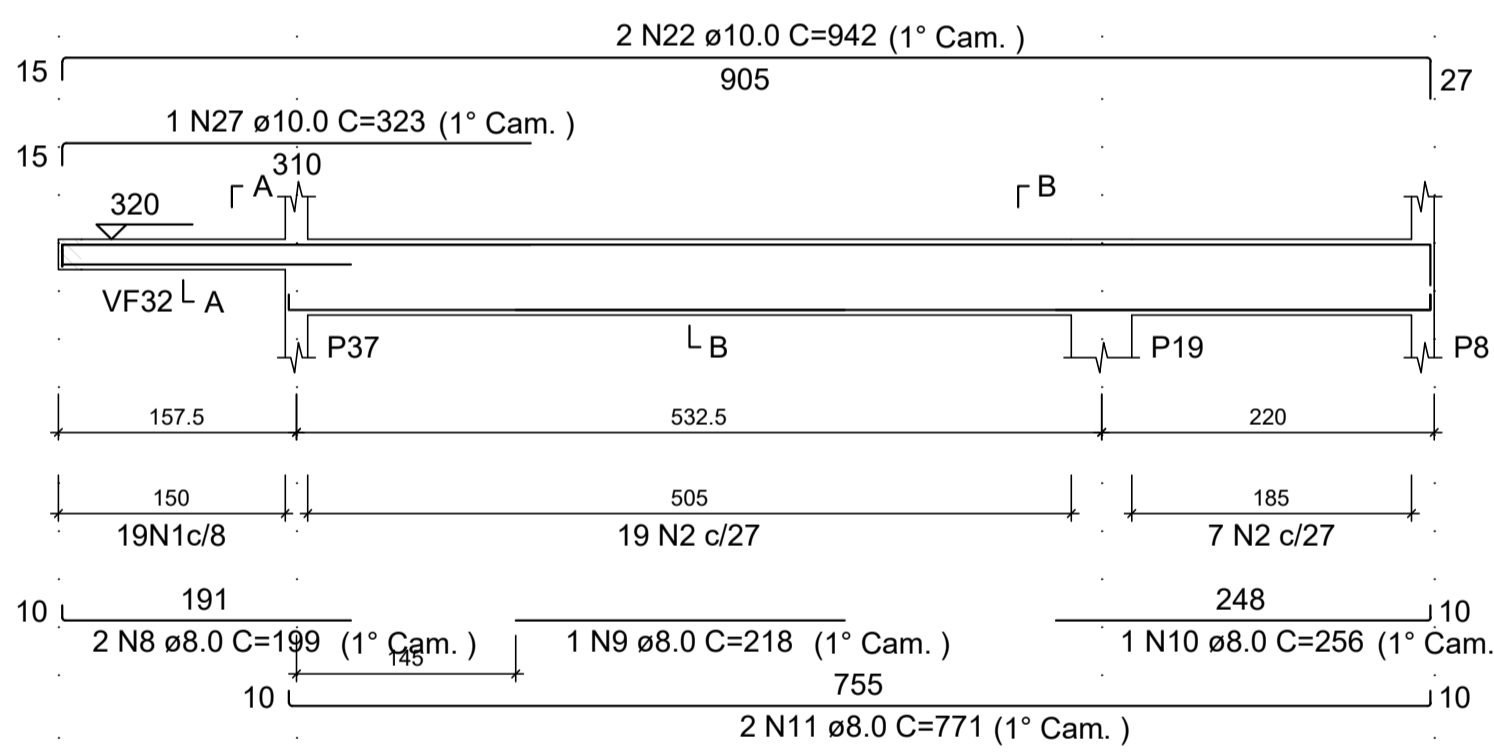


19 N2 ø6.3 C=122

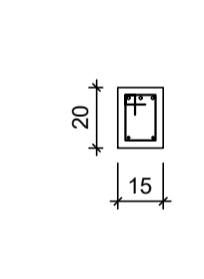


3 N19 ø8.0 C=555 (1° Cam.)

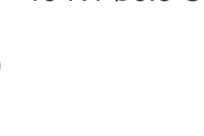
VF65
ESC 1:50



SEÇÃO A-A
ESC 1:25

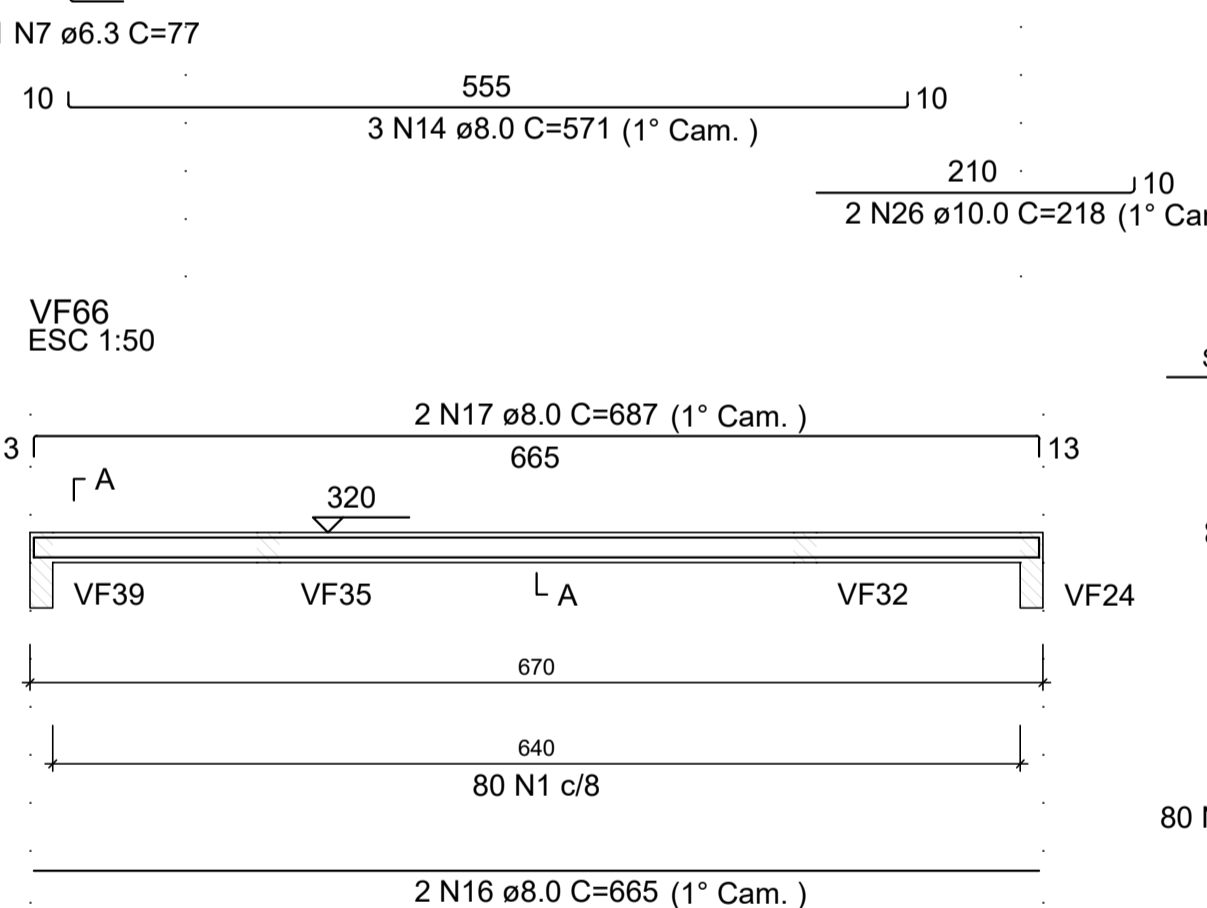


19 N1 ø6.3 C=62

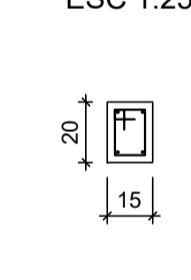


26 N2 ø6.3 C=122

VF66
ESC 1:50



SEÇÃO A-A
ESC 1:25



80 N1 ø6.3 C=62

RELAÇÃO DO AÇO

AÇO	N	DIAM (mm)	QUANT	C.UNIT (cm)	C.TOTAL (cm)
CA50	1	6.3	156	62	9672
	2	6.3	119	122	14518
	3	6.3	21	132	2772
	4	6.3	20	72	1440
	5	6.3	18	142	2556
	6	6.3	6	corr	3348
	7	6.3	1	77	77
	8	8.0	6	199	1194
	9	8.0	3	218	654
	10	8.0	3	256	768
	11	8.0	6	771	4626
	12	8.0	3	563	1689
	13	8.0	1	331	331
	14	8.0	3	571	1713
	15	8.0	1	310	310
	16	8.0	8	665	5320
	17	8.0	2	687	1374
	18	8.0	1	315	315
	19	8.0	6	555	3330
	20	8.0	1	208	208
	21	10.0	2	960	1920
	22	10.0	6	942	5652
	23	10.0	2	165	330
	24	10.0	2	343	686
	25	10.0	2	751	1502
	26	10.0	2	218	436
	27	10.0	2	323	646
	28	10.0	2	747	1494

RESUMO DO AÇO

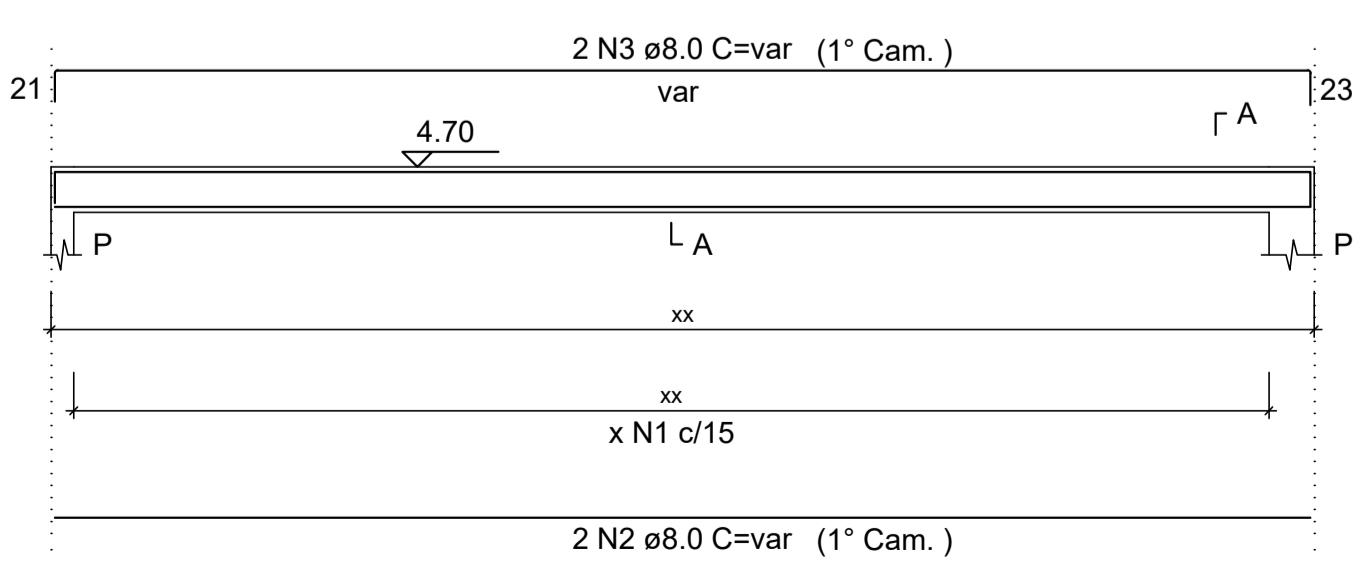
AÇO	DIAM (mm)	C.TOTAL (m)	QUANT + 10% (Barras)	PESO + 10% (kg)
CA50	6.3	343.8	32	92.6
	8.0	218.3	21	94.8
	10.0	126.7	12	85.9
PESO TOTAL (kg)				
CA50				273.2

Volume de concreto (C-25) = 4.12 m³
Área de forma = 62.29 m²

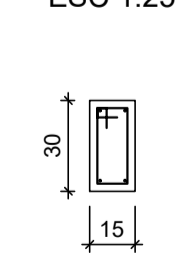
Detalhamento das Vigas - Platinbanda

Escala indicada

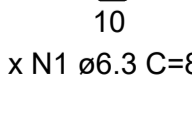
Detalhamento Típico das Vigas da Platinbanda
ESC 1:50



SEÇÃO A-A
ESC 1:25



x N1 ø6.3 C=82



x N1 ø6.3 C=82

RESUMO DO AÇO

AÇO	DIAM (mm)	C.TOTAL (m)	QUANT + 10% (Barras)	PESO + 10% (kg)
CA50	6.3	1151.3	106	309.9
	8.0	945	87	410.2
PESO TOTAL (kg)				
CA50				720.1

Volume de concreto (C-25) = 10.22 m³
Área de forma = 170.27 m²



Prefeitura Municipal de Pouso Alegre



Rua Miguel Vianna, nº 81, Sala 12
Bairro Morro Chic
CEP: 37500-080 - Itajubá / MG
Tel: (35) 3623-5720
www.dacengenharia.com.br

GERÊNCIA DE PROJETOS
DENIS DE SOUZA SILVA CREA: MG-127.216/D

COORDENAÇÃO DE PROJETOS
ALOSIO CAETANO FERREIRA CREA: MG-97.132/D

RESPONSÁVEL TÉCNICO
ENGR. CIVIL FLÁVIA C. BARBOSA CREA: MG-187.842/D

DESENHO
WILLIAM BARADEL LARI

EMPREENDIMENTO
AMPLIAÇÃO DA EM DOUTOR VASCONCELOS COSTA

ENDEREÇO
RUA VENERANDO SCODELER - BAIRRO BELA ITÁLIA
POUSO ALEGRE - MINAS GERAIS

ASSUNTO
DETALHAMENTO DOS ELEMENTOS ESTRUTURAIS
VIGAS - FORRO / PLATINBANDA
ELEMENTOS E TABELAS DE QUANTIDADES

DISCIPLINA
ESTRUTURAL

FASE DO PROJETO
EXECUTIVO

FOLHA Nº
18/20

DATA INICIAL: 19/08/2019

ESCALA: INDICADA

REVISÃO: R01

ARQUIVO: DAC-PMPA-VAS-PE-EST-R01.DWG