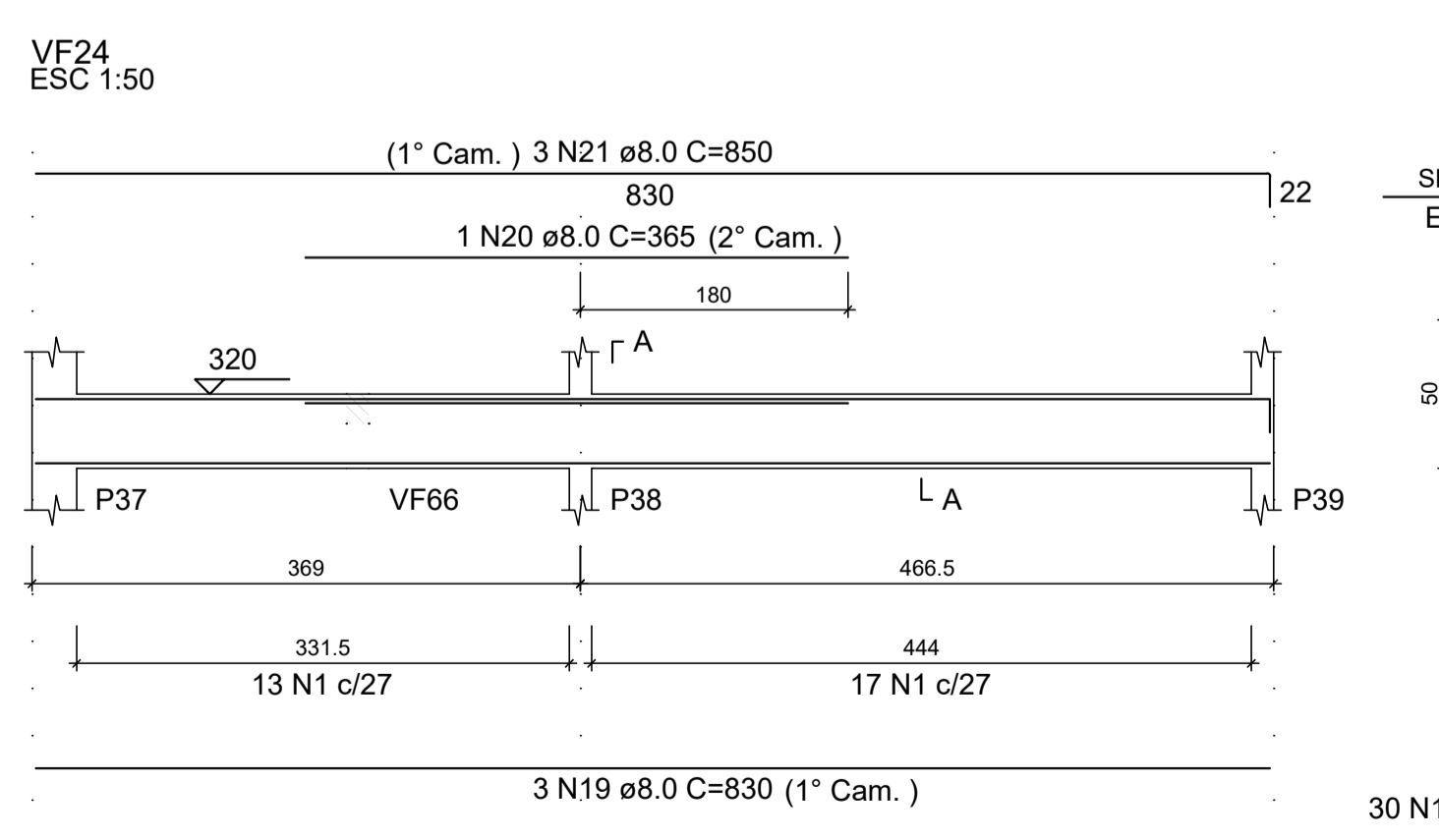
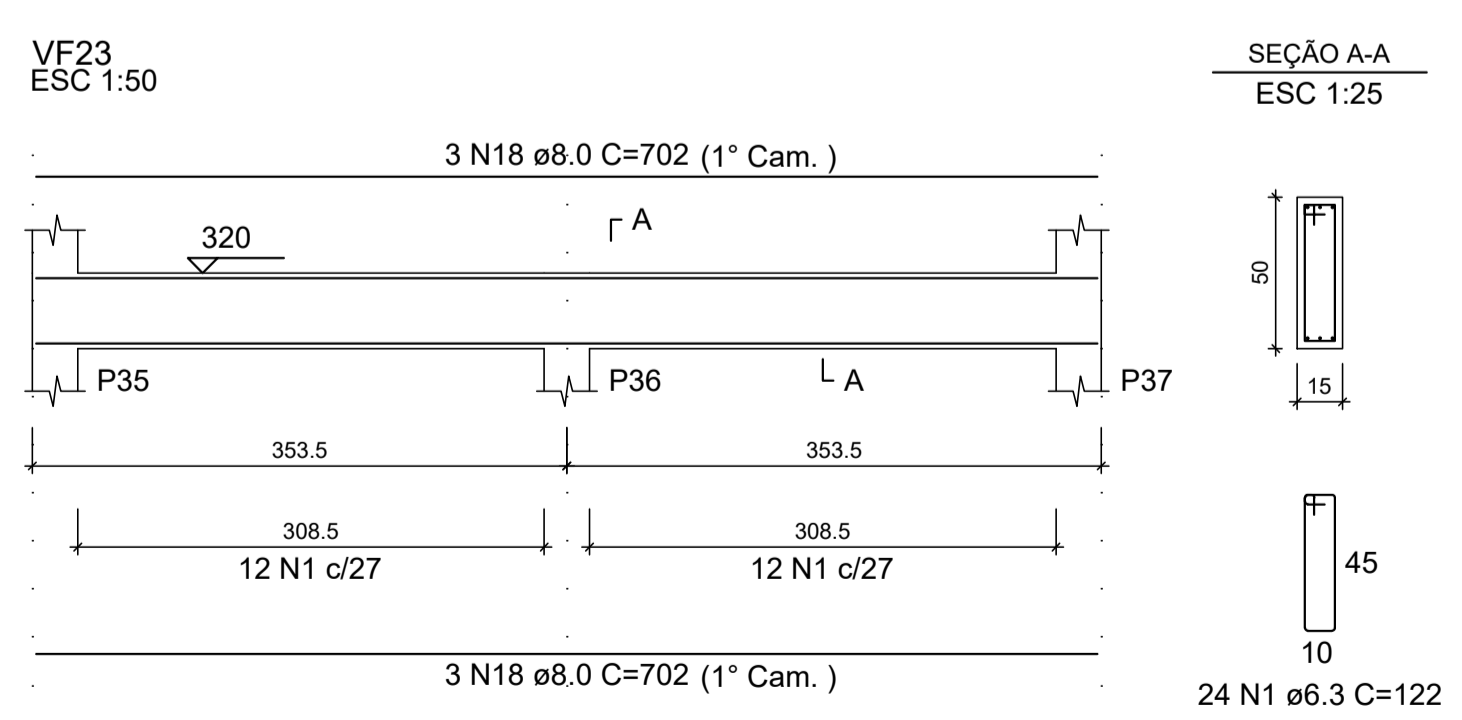
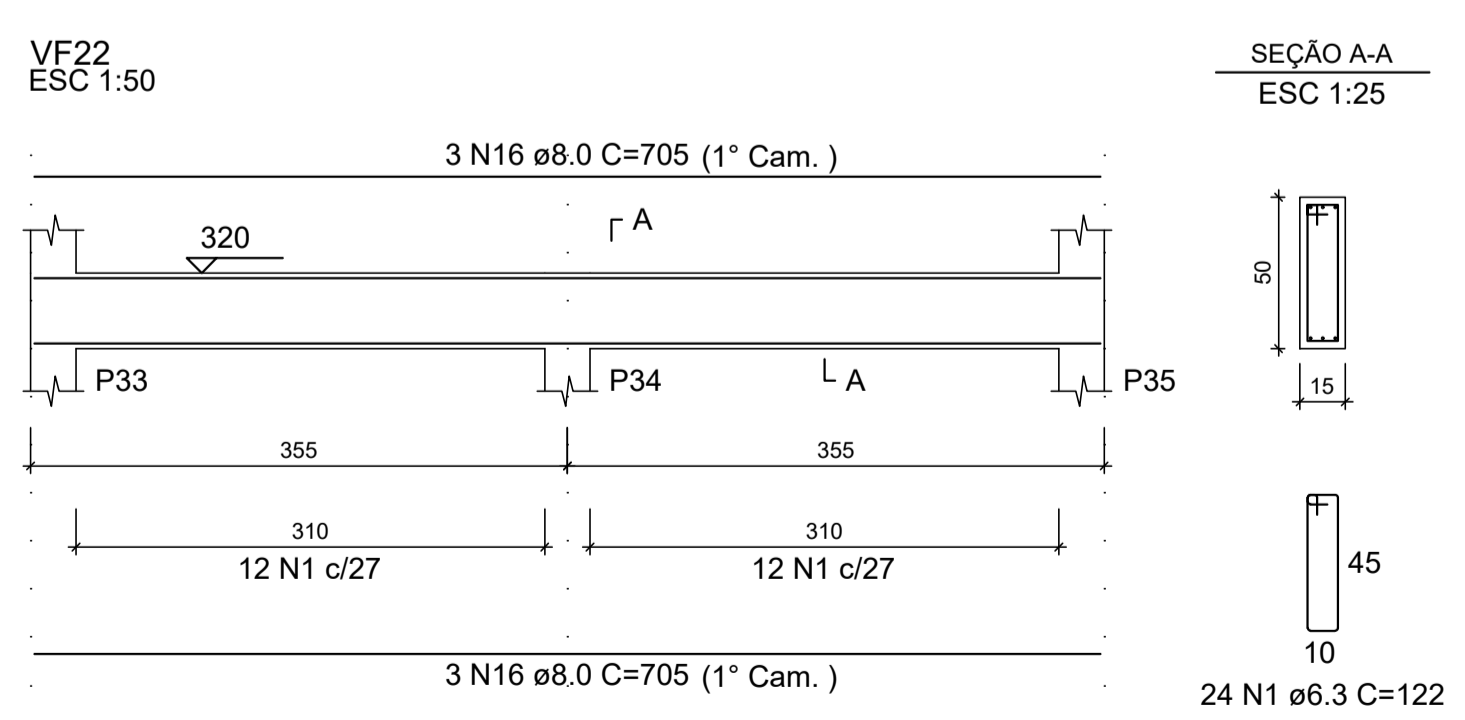
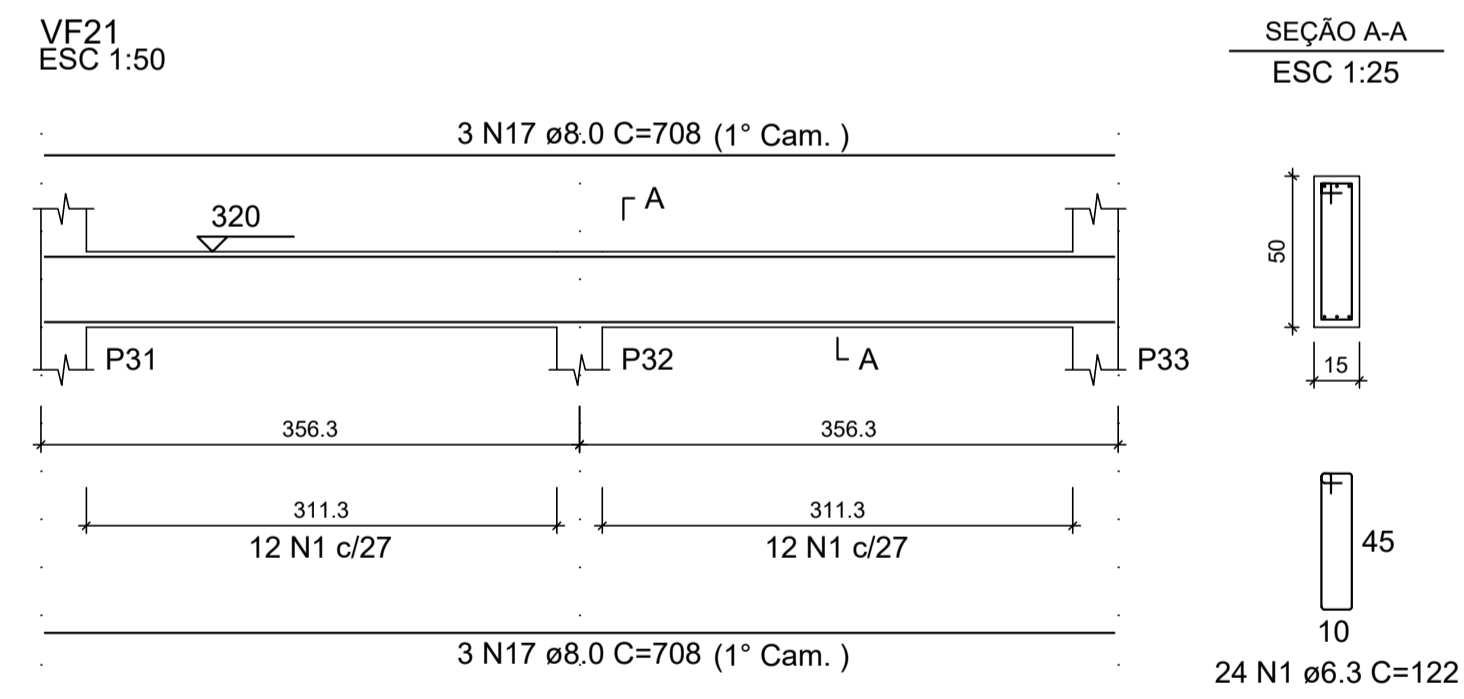
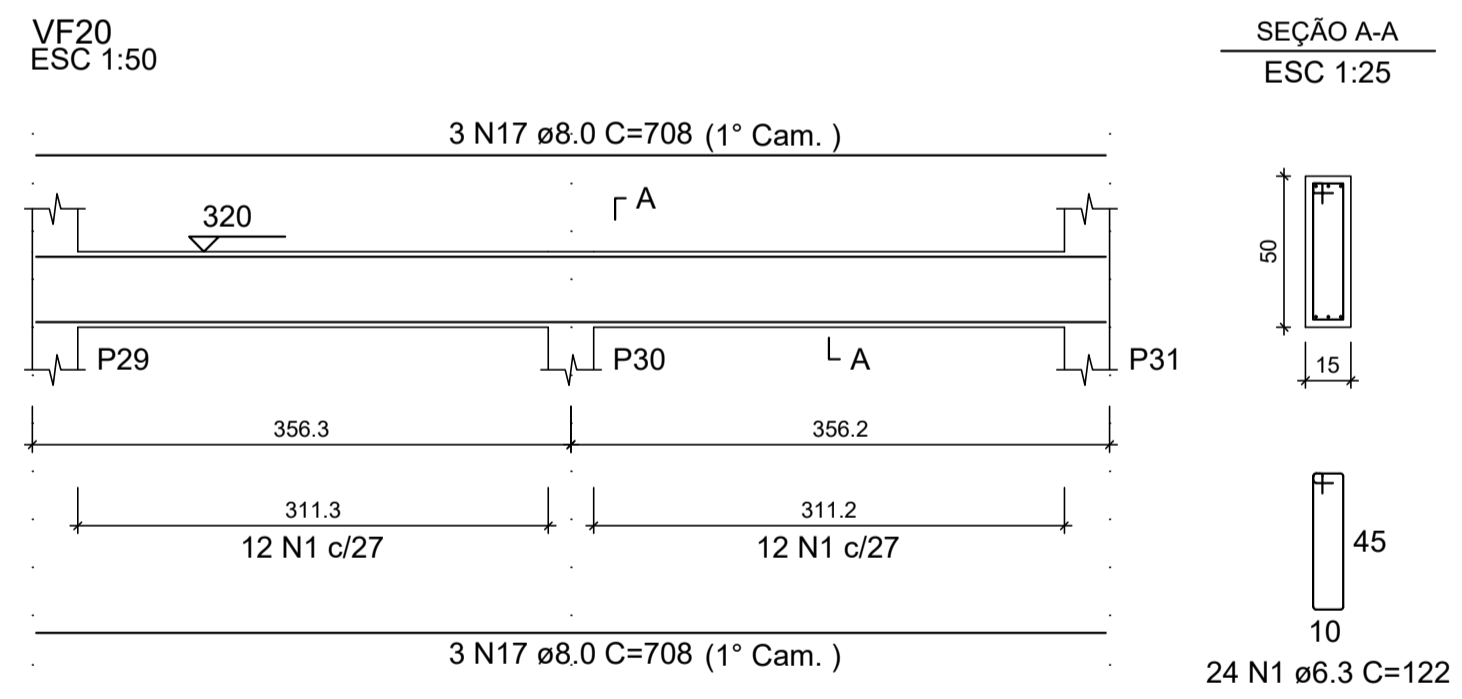
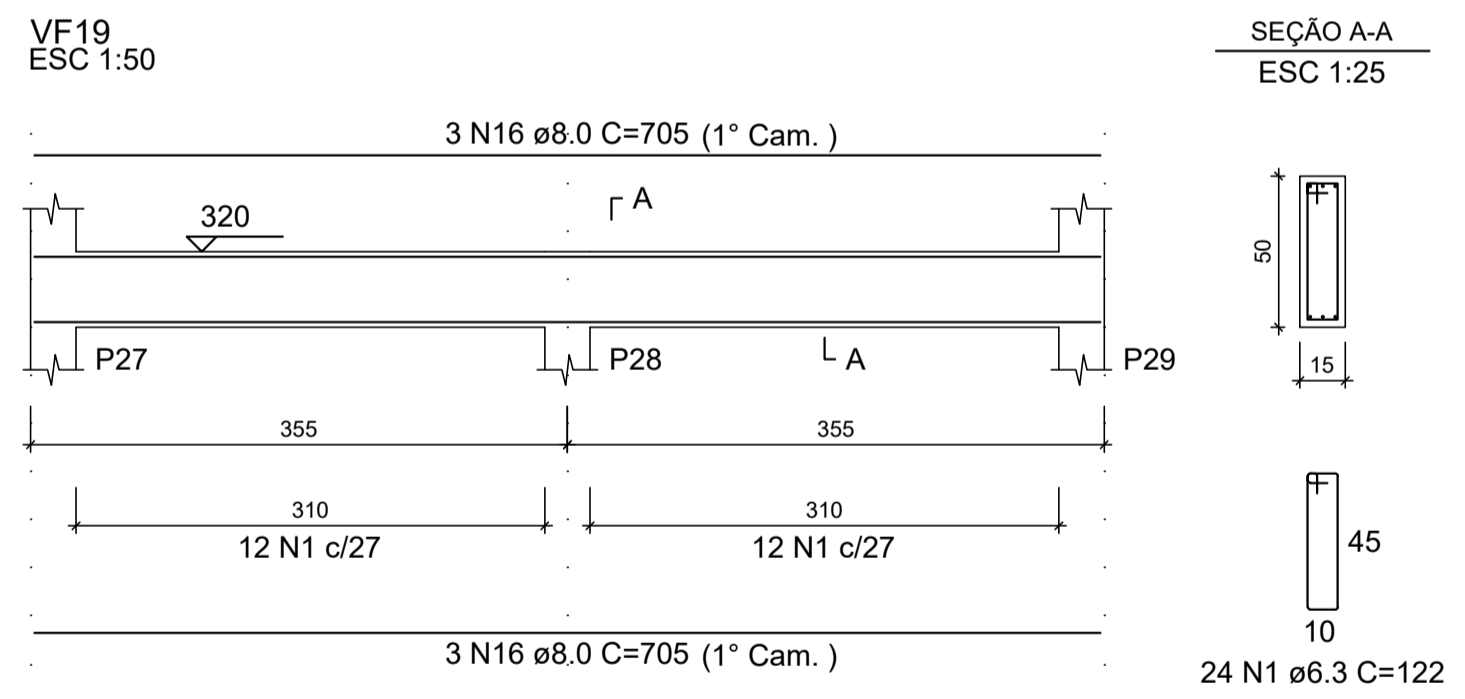
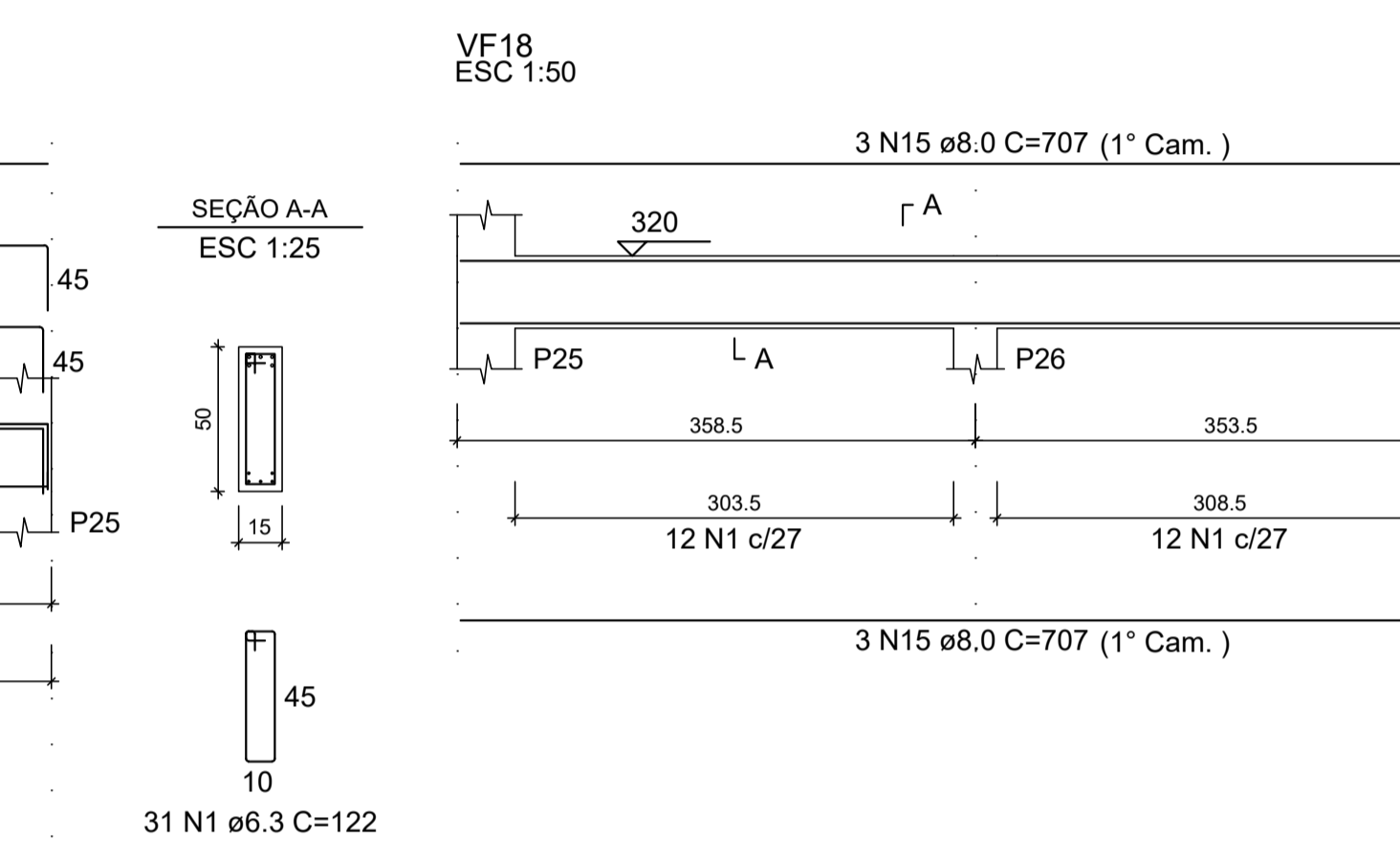
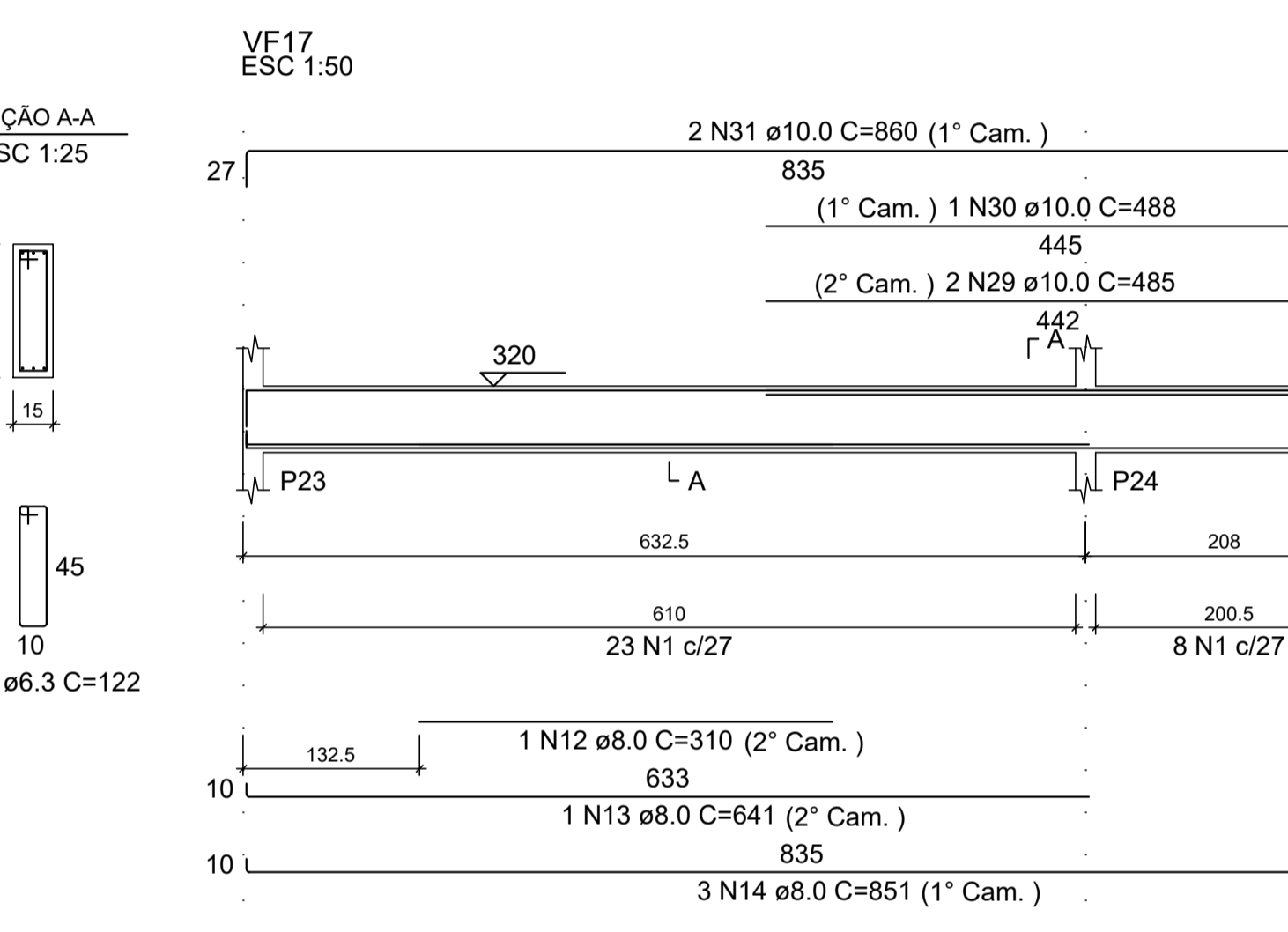
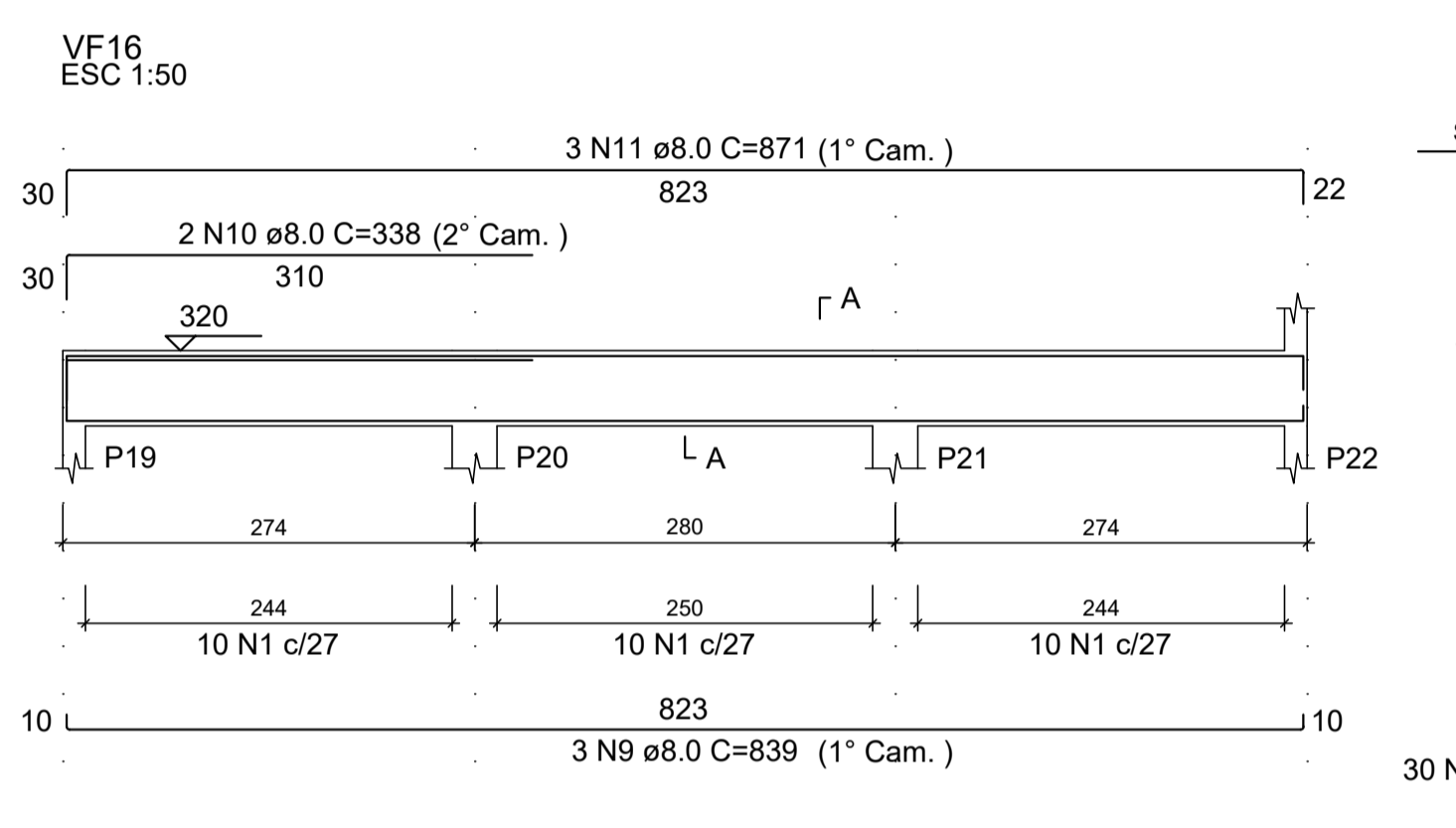
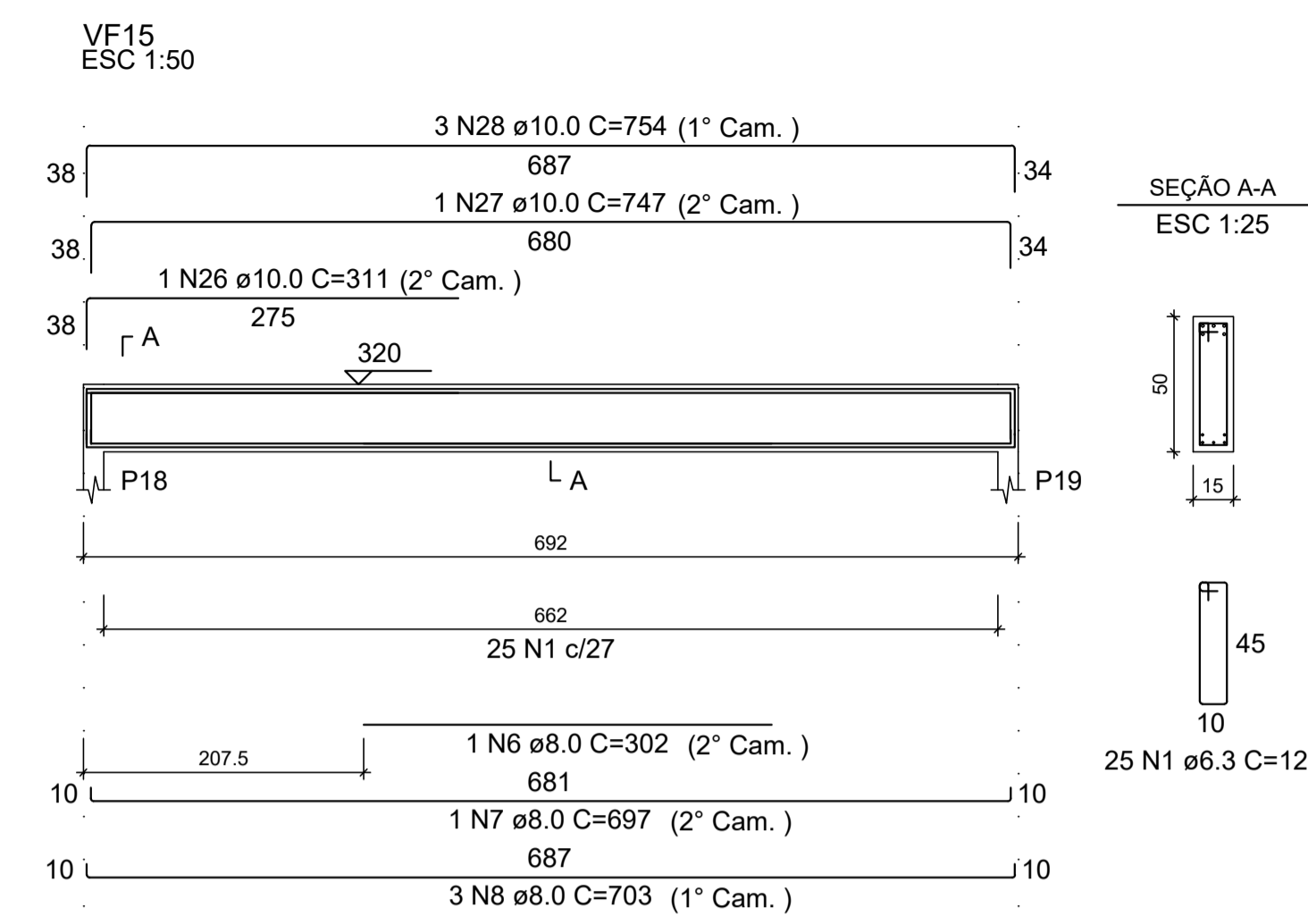
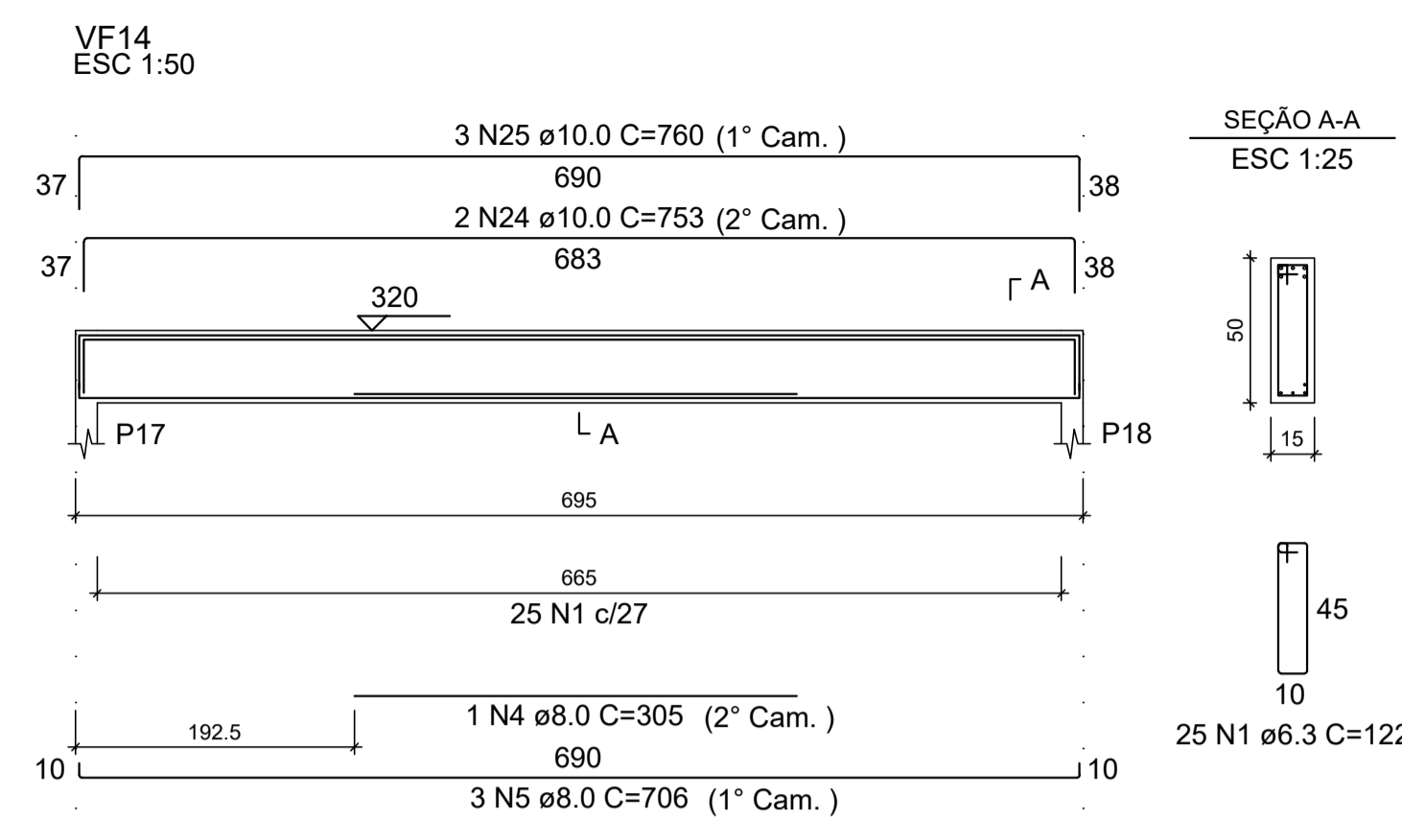
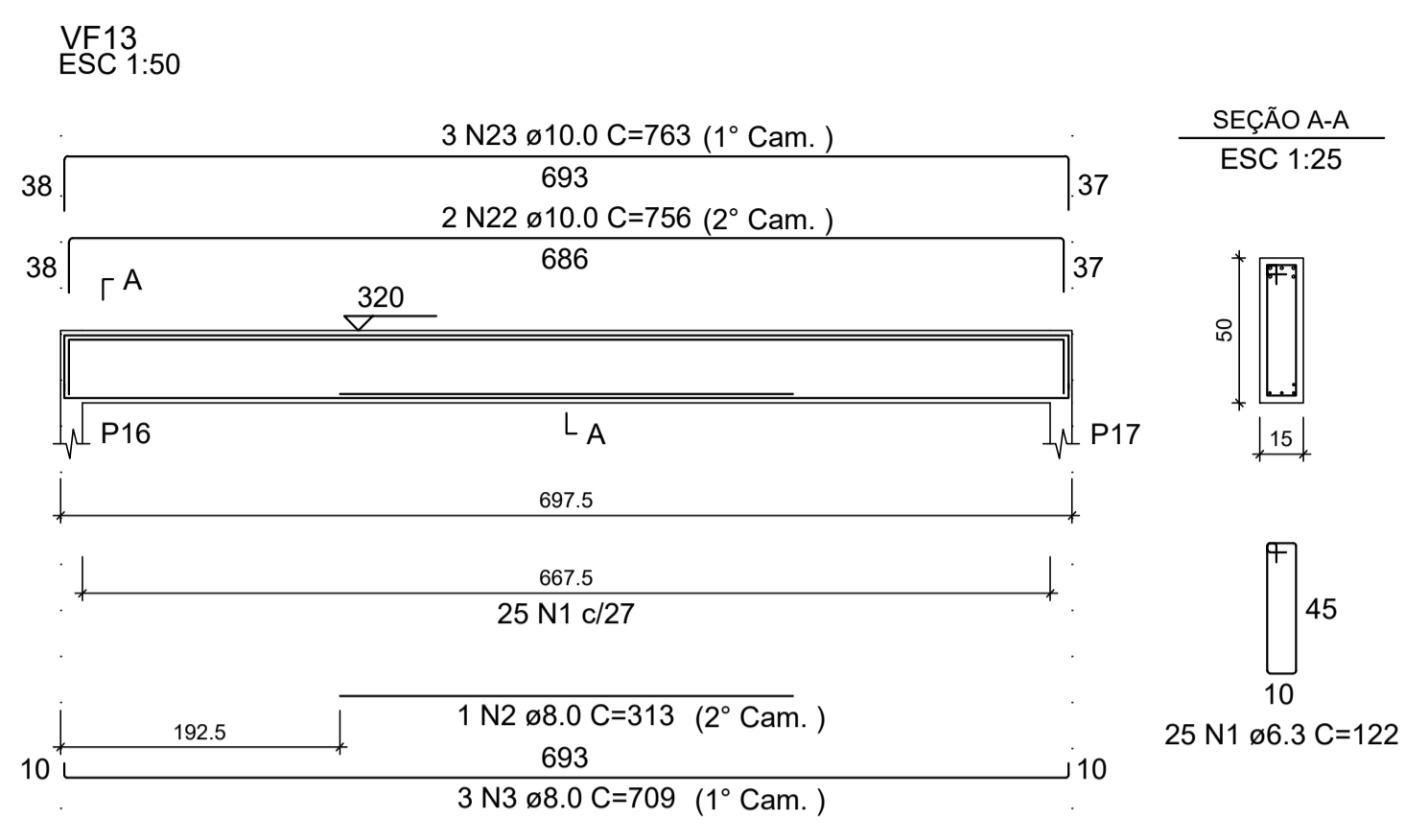


Detalhamento das Vigas - Forro
Escala indicada



RELAÇÃO DO AÇO

AÇO	N	DIAM (mm)	QUANT	C.UNIT (cm)	C.TOTAL (cm)
VF13					
VF16					
VF19					
VF22					
VF14					
VF17					
VF20					
VF23					
VF15					
VF18					
VF21					
VF24					

AÇO	N	DIAM (mm)	QUANT	C.UNIT (cm)	C.TOTAL (cm)
CA50	1	6.3	310	122	37820
	2	8.0	1	313	313
	3	8.0	3	709	2127
	4	8.0	1	305	305
	5	8.0	3	706	2118
	6	8.0	1	302	302
	7	8.0	1	697	697
	8	8.0	3	703	2109
	9	8.0	3	839	2517
	10	8.0	2	338	676
	11	8.0	3	871	2613
	12	8.0	1	310	310
	13	8.0	1	641	641
	14	8.0	3	851	2553
	15	8.0	6	707	4242
	16	8.0	12	705	8460
	17	8.0	12	708	8496
	18	8.0	6	702	4212
	19	8.0	3	830	2490
	20	8.0	1	365	365
	21	8.0	3	850	2550
	22	10.0	2	756	1512
	23	10.0	3	783	2289
	24	10.0	2	753	1506
	25	10.0	3	760	2280
	26	10.0	1	311	311
	27	10.0	1	747	747
	28	10.0	3	754	2262
	29	10.0	2	485	970
	30	10.0	1	488	488
	31	10.0	2	860	1720

RESUMO DO AÇO

AÇO	DIAM (mm)	C.TOTAL (m)	QUANT + 10% (Barras)	PESO + 10% (kg)
CA50	6.3	378.2	35	101.8
	8.0	481	45	208.8
	10.0	140.8	13	95.5
PESO TOTAL (kg)				
CA50		406.1		

Volume de concreto (C-25) = 6.64 m³
Área de forma = 101.80 m²

Prefeitura Municipal de Pouso Alegre

<p>PROJETO</p> <p>DAC Engenharia</p> <p>Rua Miguel Vianna, nº 81, Sala 12 Bairro Morro Chic CEP: 37500-080 - Itajubá / MG Tel: (35) 3623-5720 www.dacengenharia.com.br</p>	<p>GERÊNCIA DE PROJETOS DENIS DE SOUZA SILVA CREA: MG-127.216/D</p> <p>COORDENAÇÃO DE PROJETOS ALOISIO CAETANO FERREIRA CREA: MG-97.132/D</p> <p>RESPONSÁVEL TÉCNICO ENGR. CIVIL FLÁVIA C. BARBOSA CREA: MG-187.842/D</p> <p>PROJETO WILLIAM BARADEL LARI</p> <p>DESENHO WILLIAM BARADEL LARI</p>
<p>EMPREENDIMENTO</p> <p>AMPLIAÇÃO DA EM DOUTOR VASCONCELOS COSTA</p>	
<p>ENDEREÇO</p> <p>RUA VENERANDO SCODELER - BAIRRO BELA ITÁLIA POUSO ALEGRE - MINAS GERAIS</p>	<p>DISCIPLINA</p> <p>ESTRUTURAL</p>
<p>ASSUNTO</p> <p>DETALHAEMNTOS DOS ELEMENTOS ESTRUTURAIS VIGAS - FORRO ELEMENTOS E TABELAS DE QUANTIDADES</p>	<p>FASE DO PROJETO</p> <p>EXECUTIVO</p>
<p>DATA INICIAL</p> <p>19/08/2019</p>	<p>FOLHA Nº</p> <p>14/20</p>
<p>ESCALA</p> <p>INDICADA</p>	<p>REVISÃO</p> <p>R01</p>
<p>ARQUIVO</p> <p>DAC-PMPA-VAS-PE-EST-R01.DWG</p>	