

Detalhamento das Vigas - Forro

Escala indicada

RELAÇÃO DO AÇO

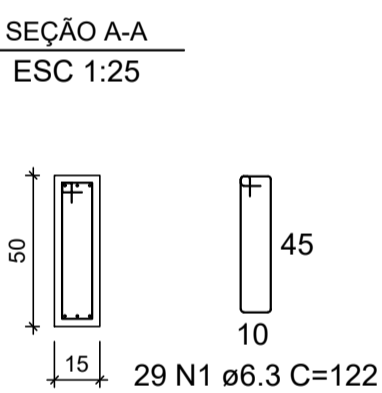
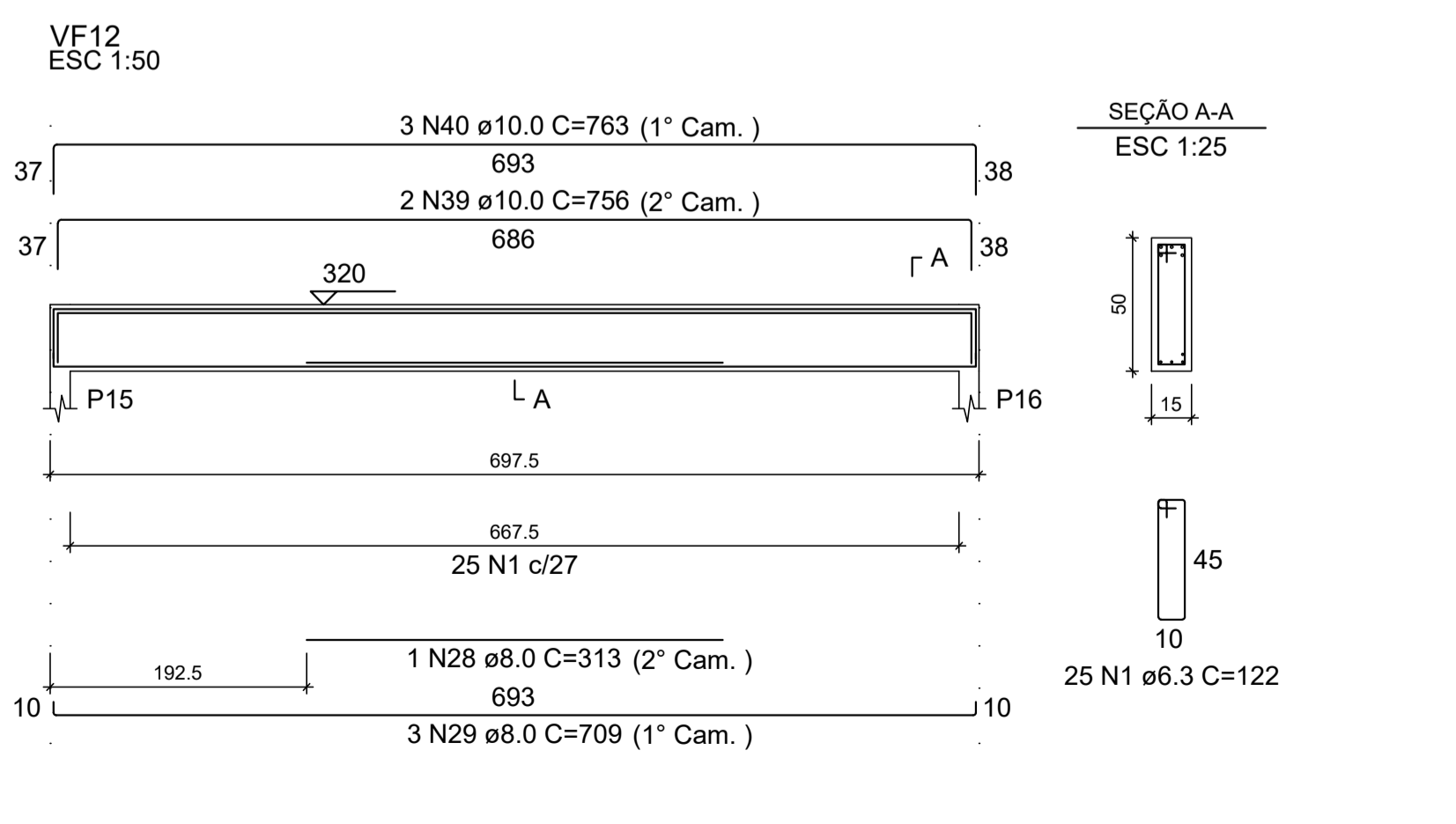
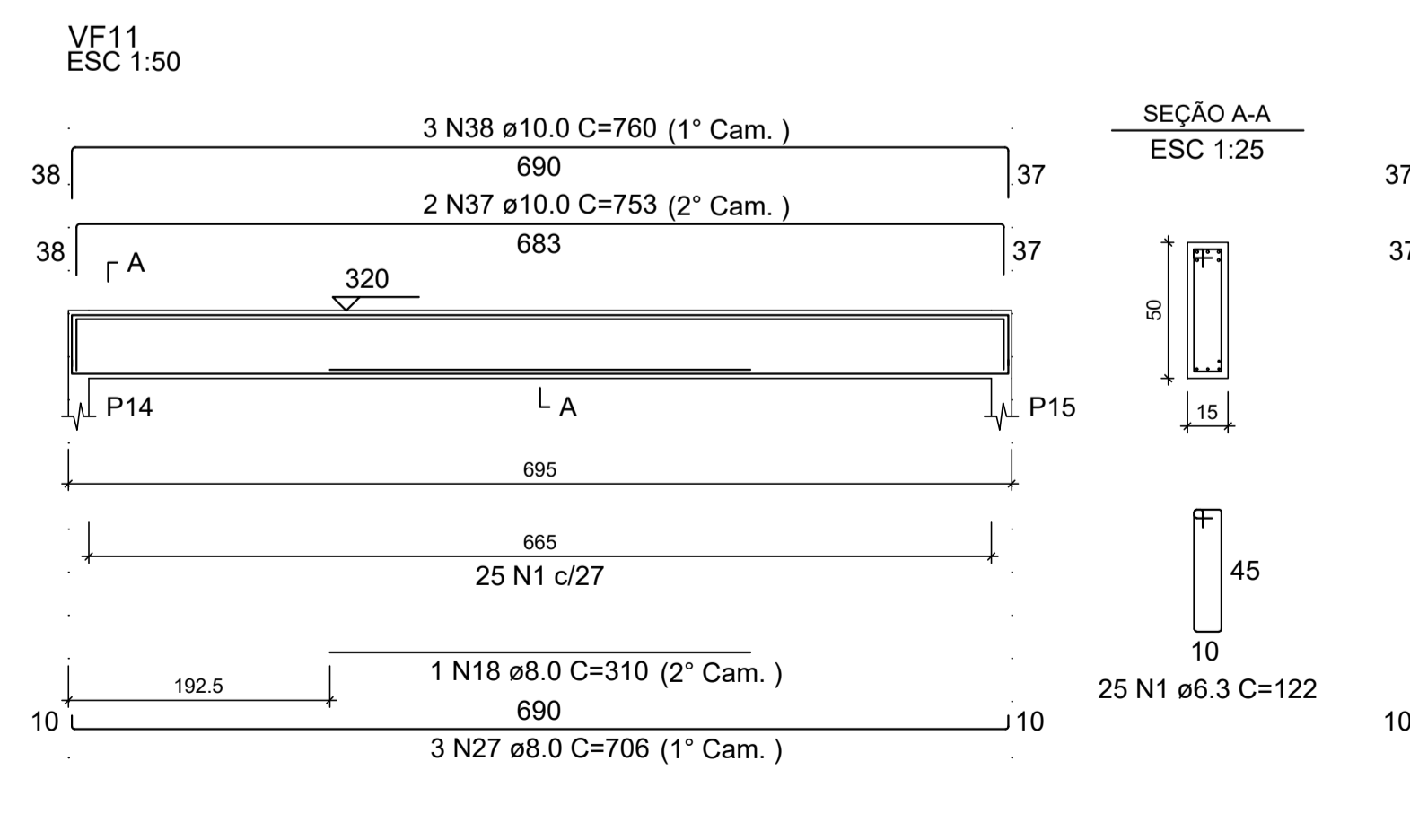
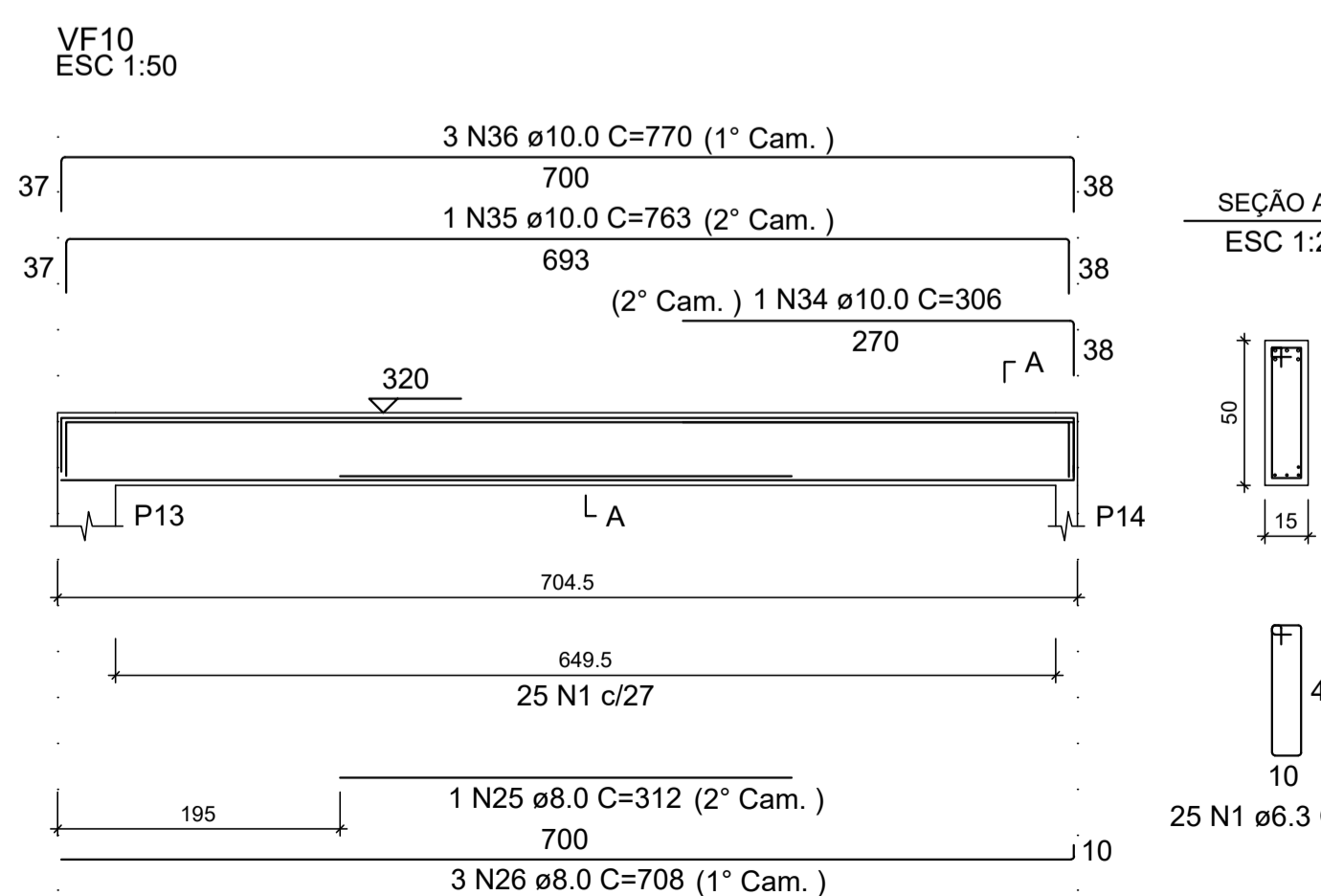
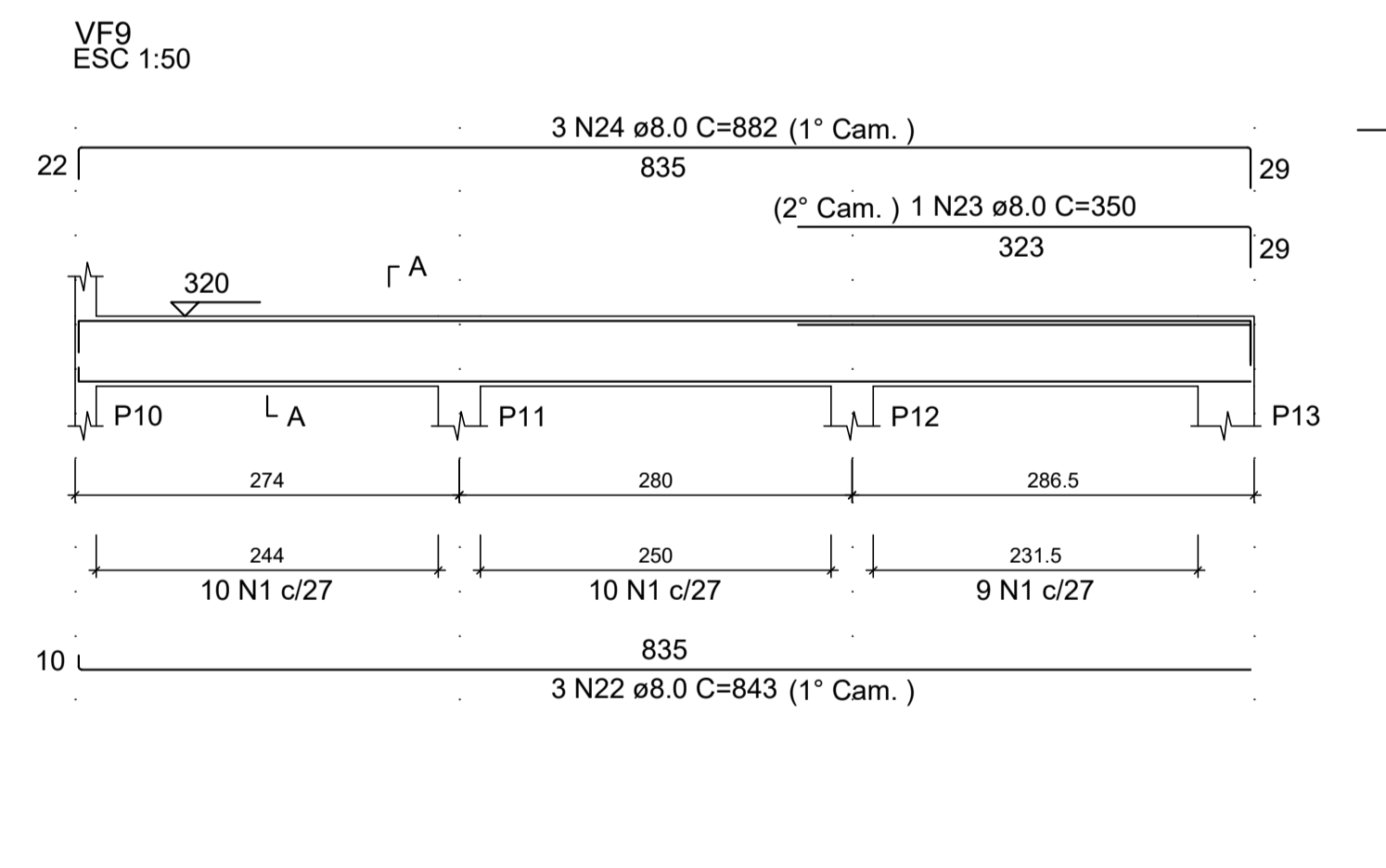
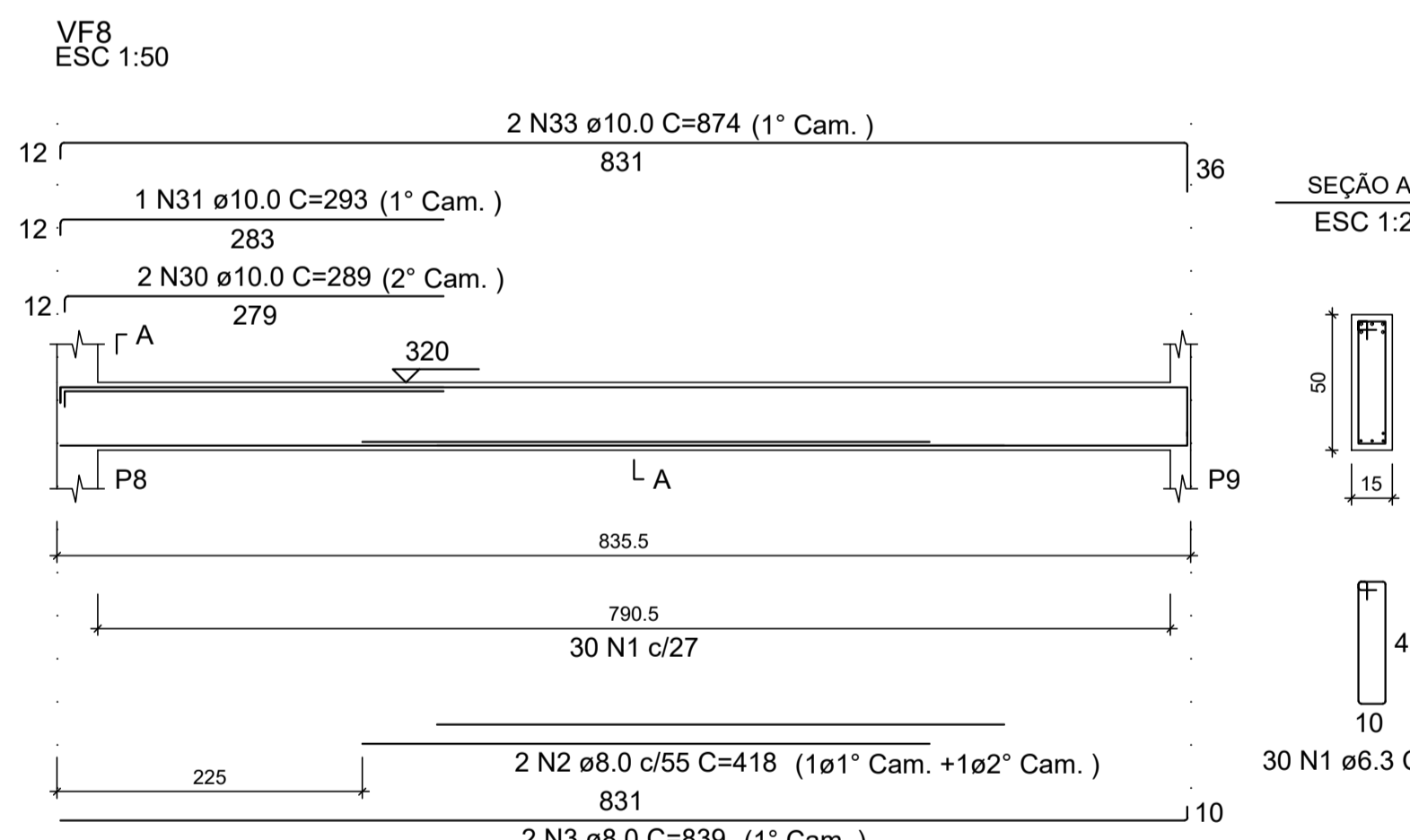
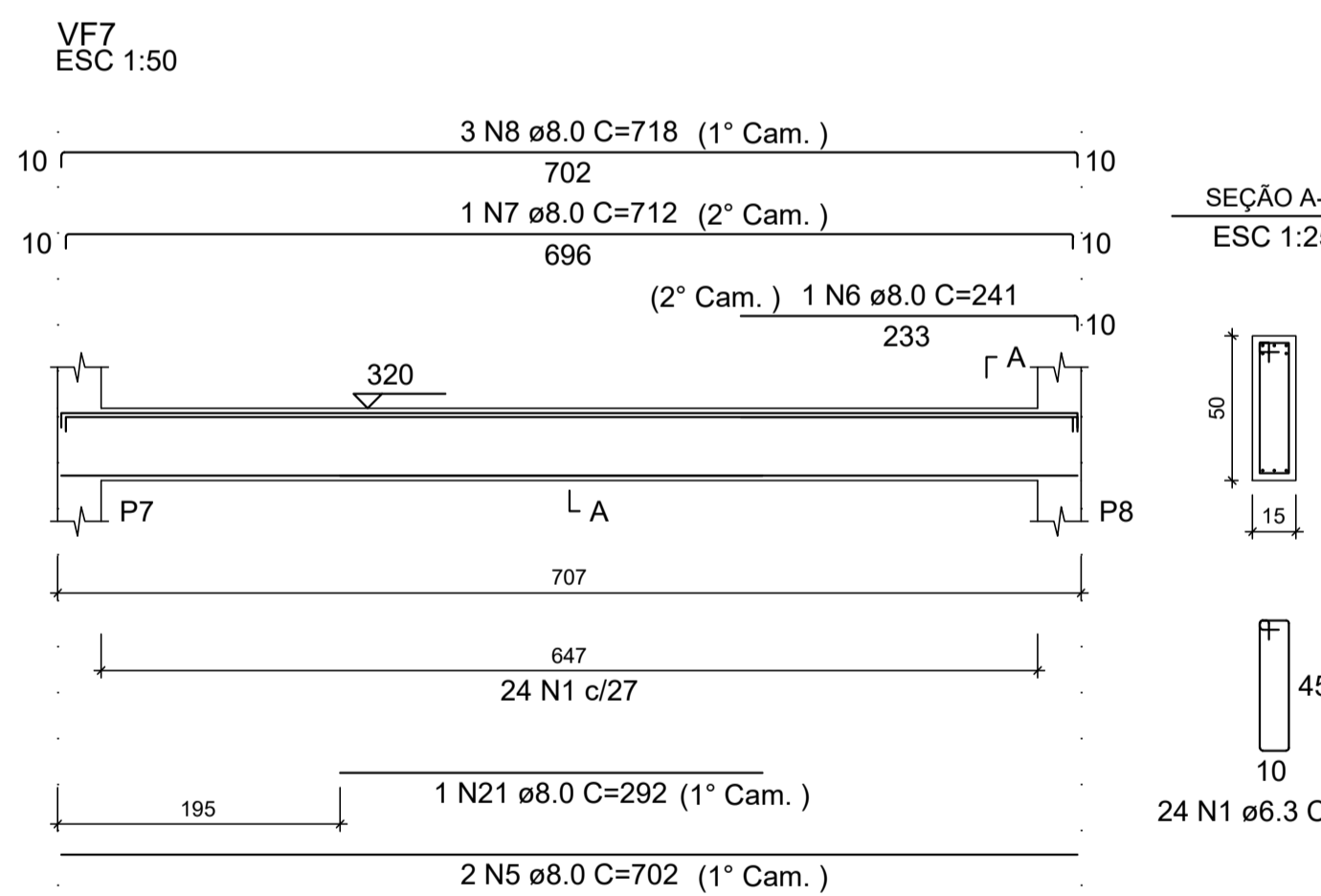
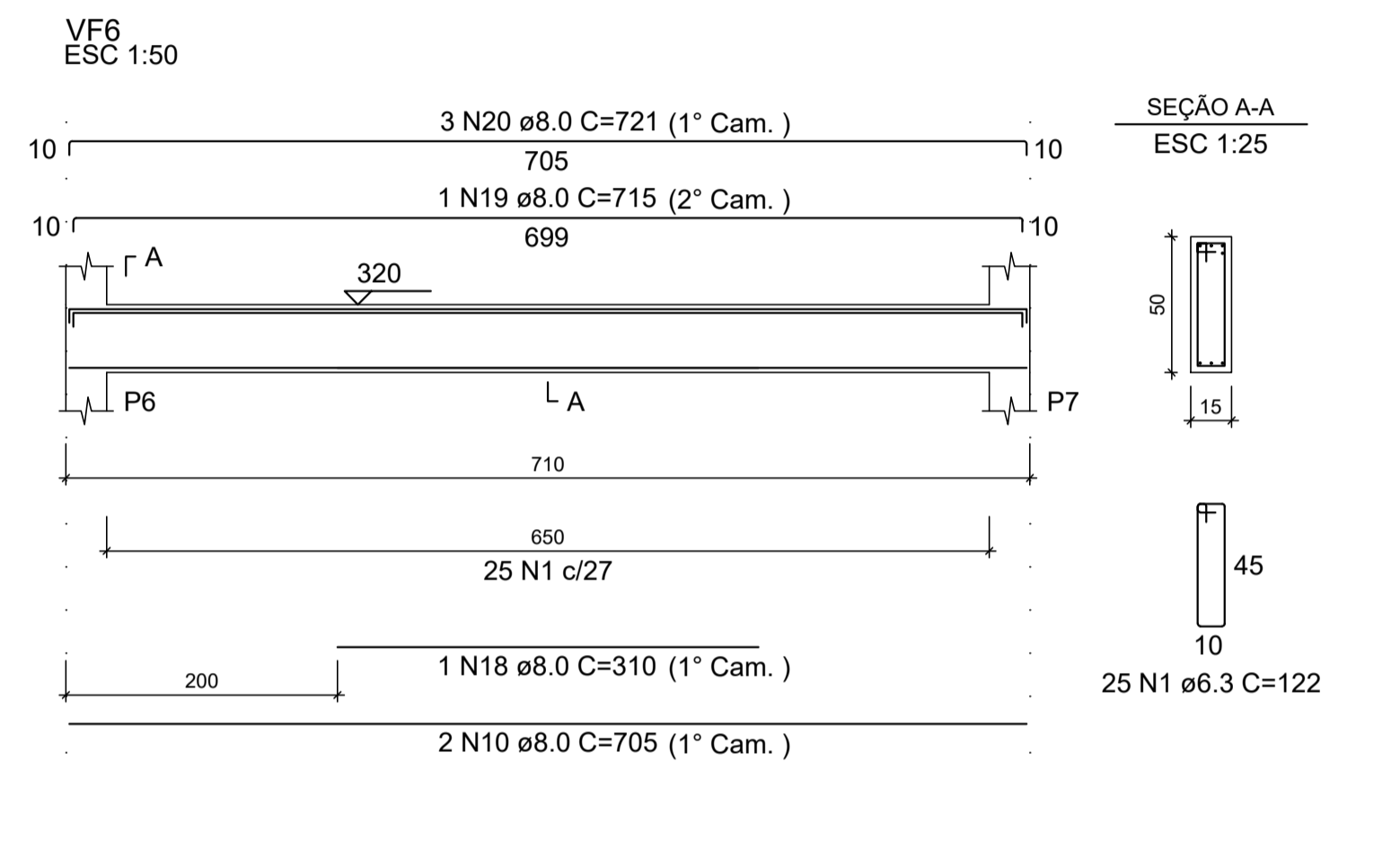
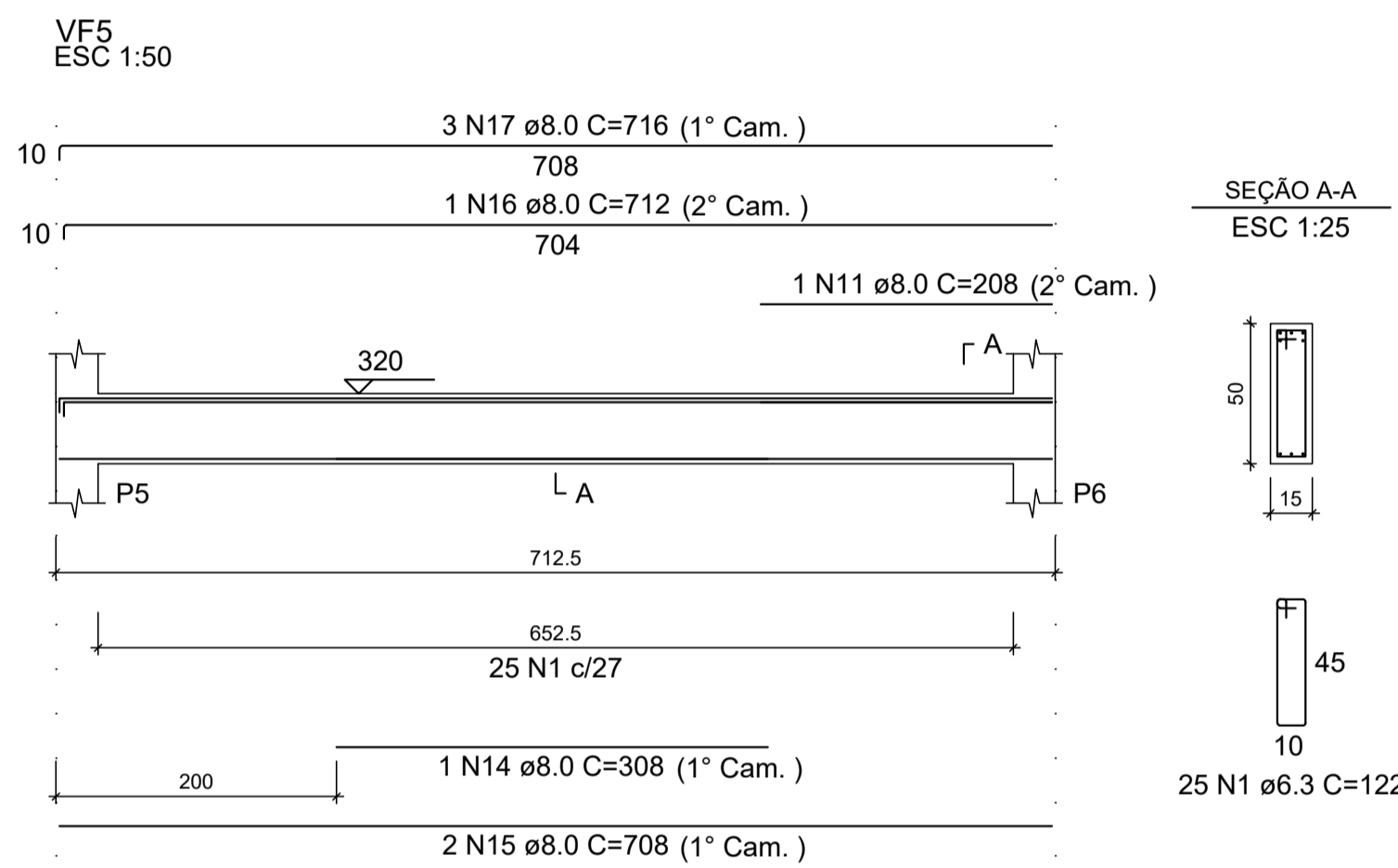
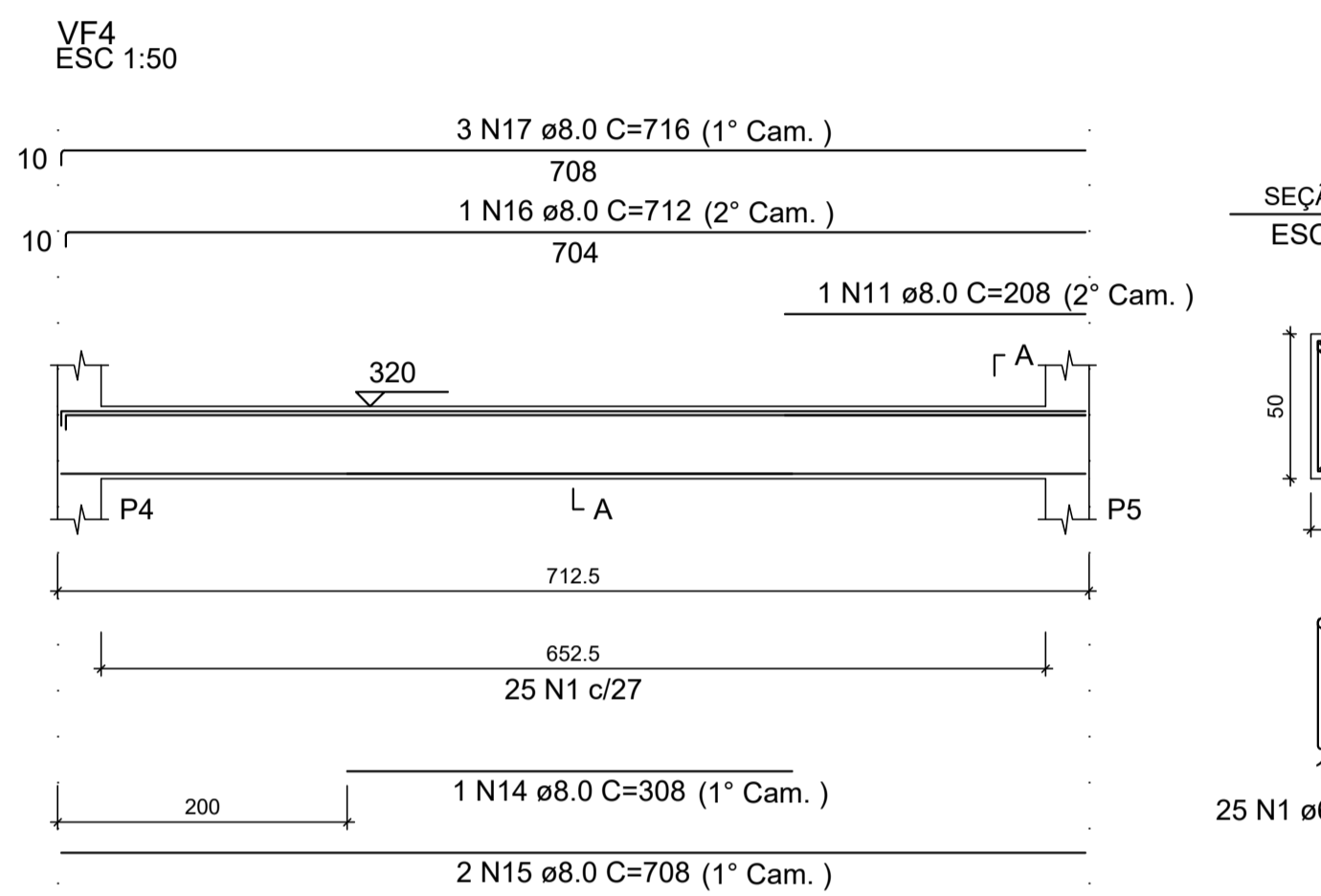
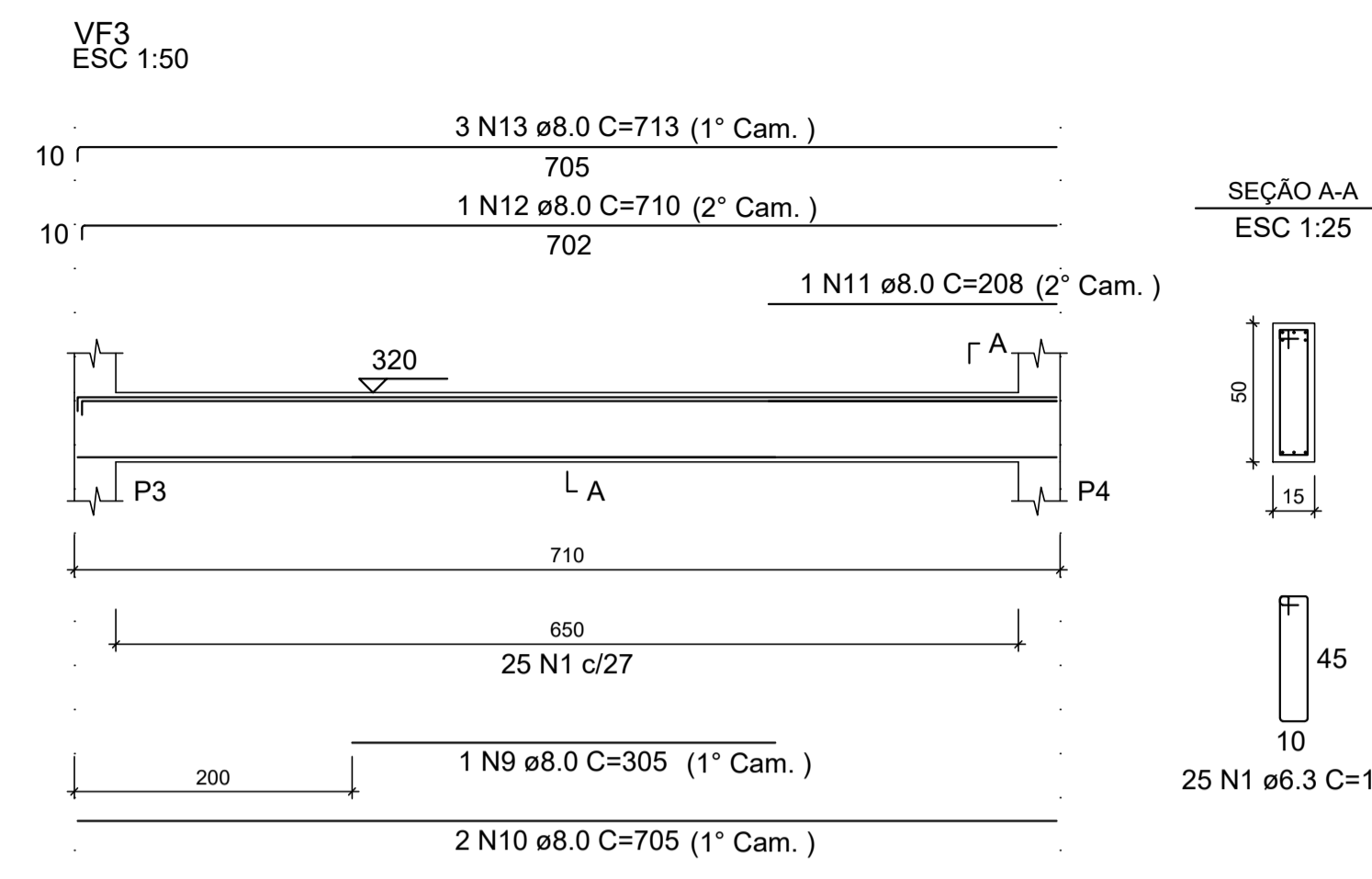
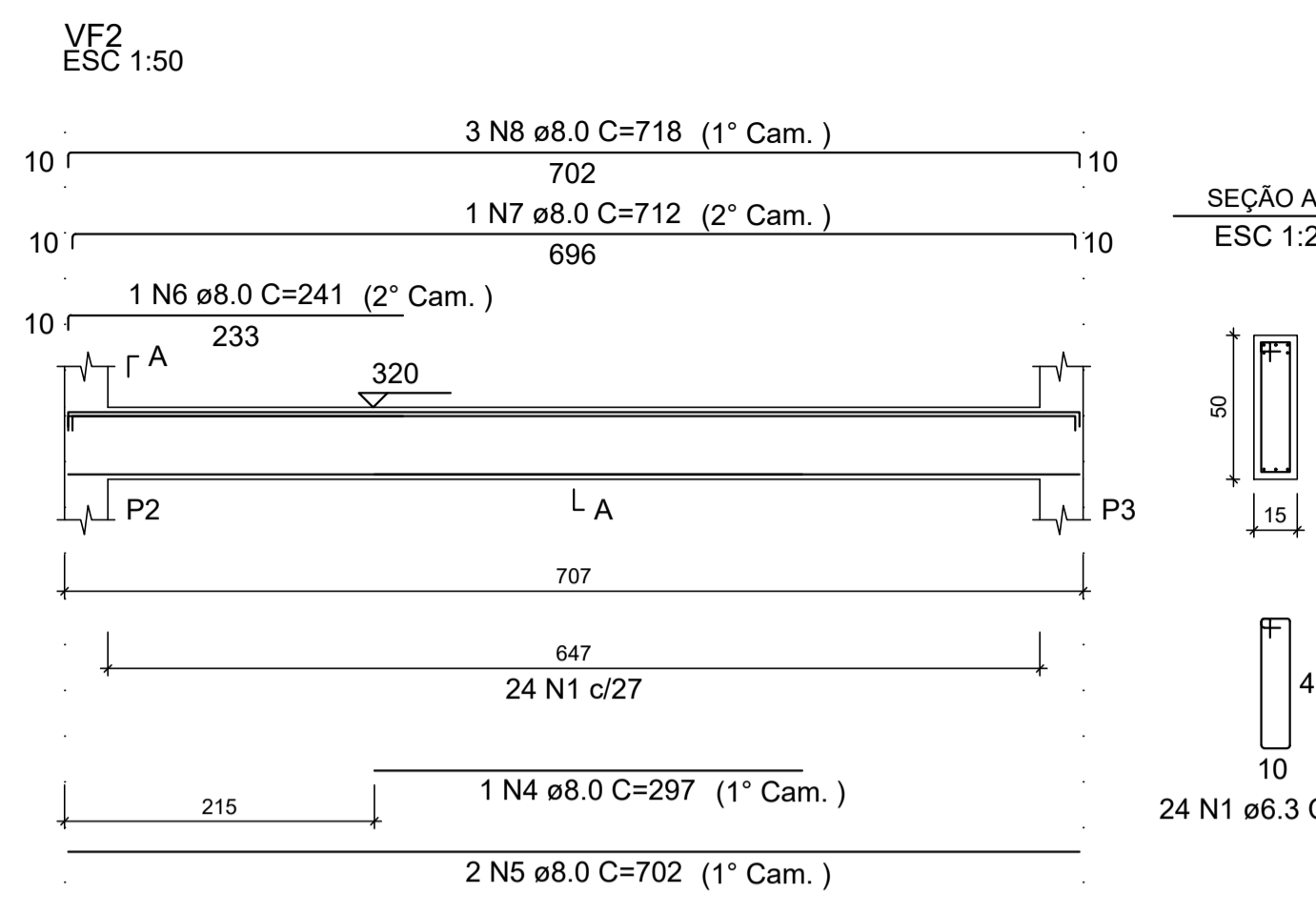
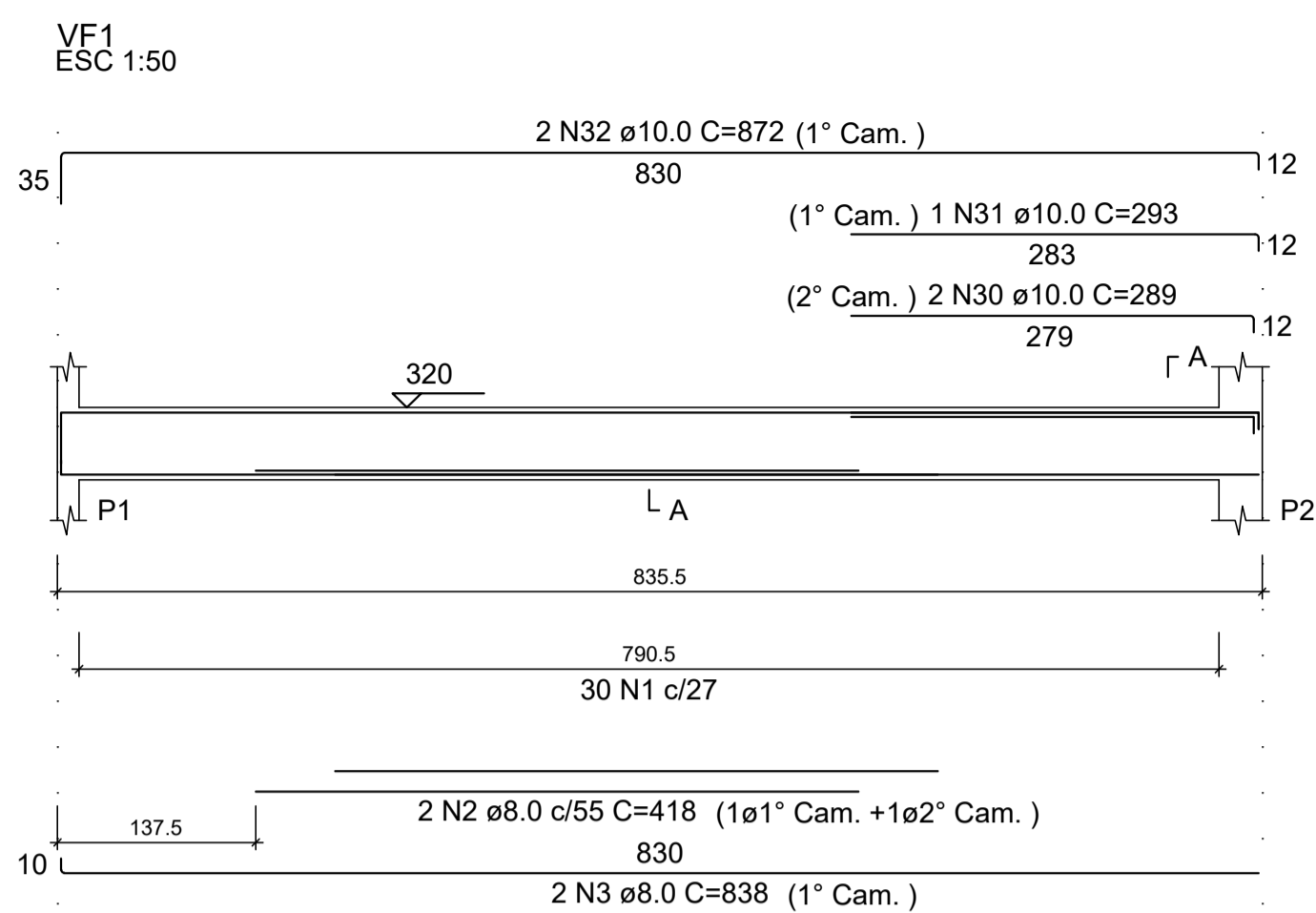
VF1 VF2 VF3
VF4 VF5 VF6
VF7 VF8 VF9
VF10 VF11 VF12

AÇO	N	DIAM (mm)	QUANT	C.UNIT (cm)	C.TOTAL (cm)
CA50	1	6.3	312	122	38064
	2	8.0	4	418	1672
	3	8.0	4	838	3352
	4	8.0	1	297	297
	5	8.0	4	702	2808
	6	8.0	2	241	482
	7	8.0	2	712	1424
	8	8.0	6	718	4308
	9	8.0	1	305	305
	10	8.0	4	705	2820
	11	8.0	3	208	624
	12	8.0	1	710	710
	13	8.0	3	713	2139
	14	8.0	2	308	616
	15	8.0	4	708	2832
	16	8.0	2	712	1424
	17	8.0	6	716	4296
	18	8.0	2	310	620
	19	8.0	1	715	715
	20	8.0	3	721	2163
	21	8.0	1	292	292
	22	8.0	3	843	2529
	23	8.0	1	350	350
	24	8.0	3	882	2646
	25	8.0	1	312	312
	26	8.0	3	708	2124
	27	8.0	3	706	2118
	28	8.0	1	313	313
	29	8.0	3	709	2127
	30	10.0	4	289	1156
	31	10.0	2	293	586
	32	10.0	2	872	1744
	33	10.0	2	874	1748
	34	10.0	1	306	306
	35	10.0	1	763	763
	36	10.0	3	770	2310
	37	10.0	2	753	1506
	38	10.0	3	760	2280
	39	10.0	2	756	1512
	40	10.0	3	763	2289

RESUMO DO AÇO

AÇO	DIAM (mm)	C.TOTAL (m)	QUANT + 10% (Barras)	PESO + 10% (kg)
CA50	6.3	380.6	35	102.5
	8.0	464.2	43	201.5
	10.0	162	15	109.9
PESO TOTAL (kg)				
CA50		413.8		

Volume de concreto (C-25) = 6.65 m³
Área de forma = 101.98 m²



REV. 01	18/03/21	ALTERAÇÃO DO ACESSO	DAC
REV. 00	19/08/19	EMISSÃO INICIAL	DAC
REVISÃO: DATA :	DESCRICAÇÃO:	RESP.:	

CLIENTE



Prefeitura Municipal de Pouso Alegre

DAC Engenharia
Rua Miguel Vianna, nº 81, Sala 12
Bairro Morro Chic
CEP: 37500-080 - Itajubá / MG
Tel: (35) 3623-5720
www.dacengenharia.com.br

GERÊNCIA DE PROJETOS: DENIS DE SOUZA SILVA CREA: MG-127.216/D
COORDENAÇÃO DE PROJETOS: ALOISIO CAETANO FERREIRA CREA: MG-97.132/D
RESPONSÁVEL TÉCNICO: ENGR. CIVIL FLÁVIA C. BARBOSA CREA: MG-187.842/D
DESENHO: WILLIAM BARADEL LARI

AMPLIAÇÃO DA EM DOUTOR VASCONCELOS COSTA

ENDEREÇO: RUA VENERANDO SCODELER - BAIRRO BELA ITÁLIA, POUSO ALEGRE - MINAS GERAIS

ASSUNTO: DETALHAMENTO DOS ELEMENTOS ESTRUTURAIS, VIGAS - FORRO, ELEMENTOS E TABELAS DE QUANTIDADES

DISCIPLINA: ESTRUTURAL

FASE DO PROJETO: EXECUTIVO

FOLHA Nº: 13/20

DATA INICIAL: 19/08/2019 | ESCALA: INDICADA | REVISÃO: R01 | ARQUIVO: DAC-PMPA-VAS-PE-EST-R01.DWG