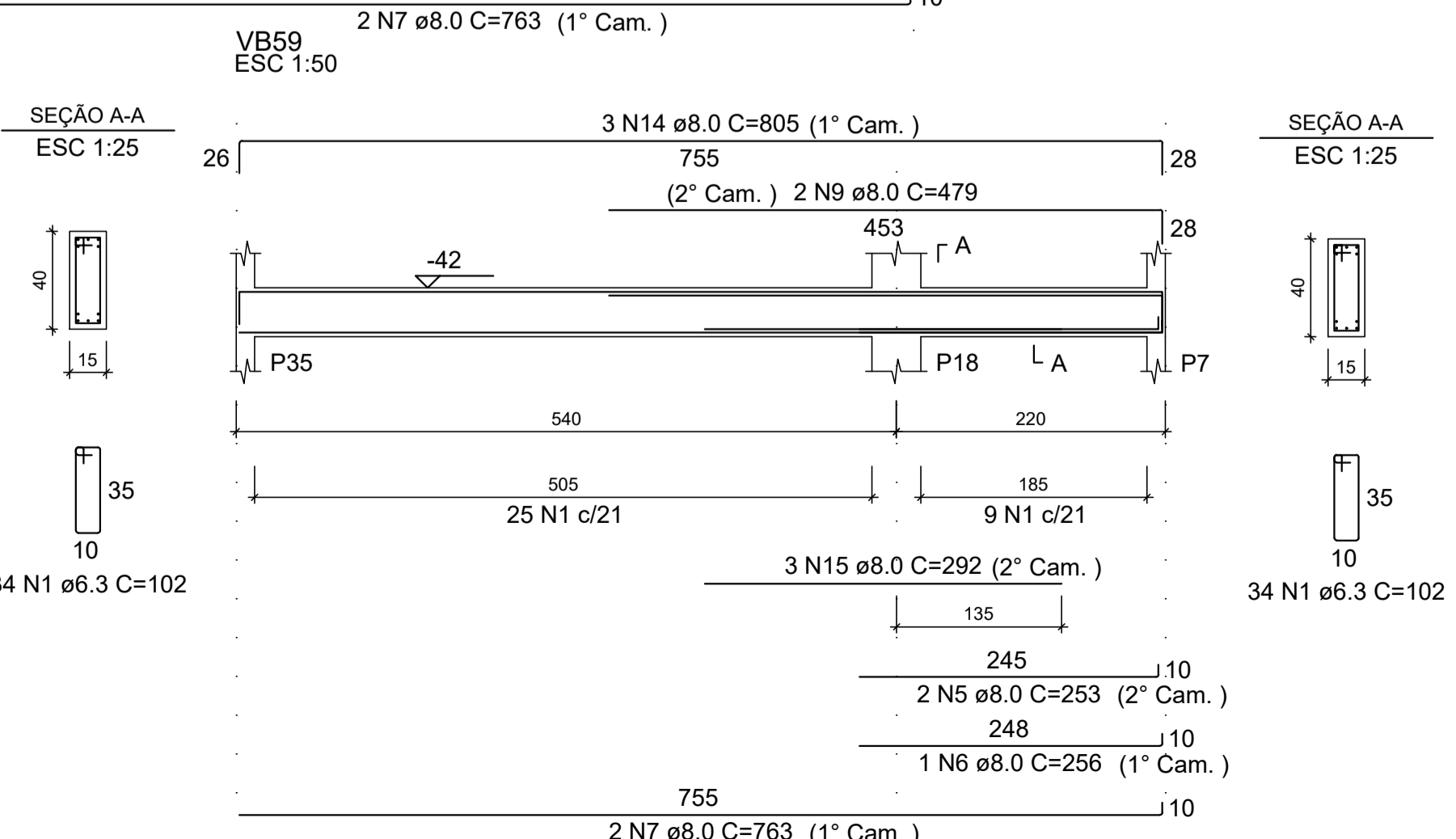
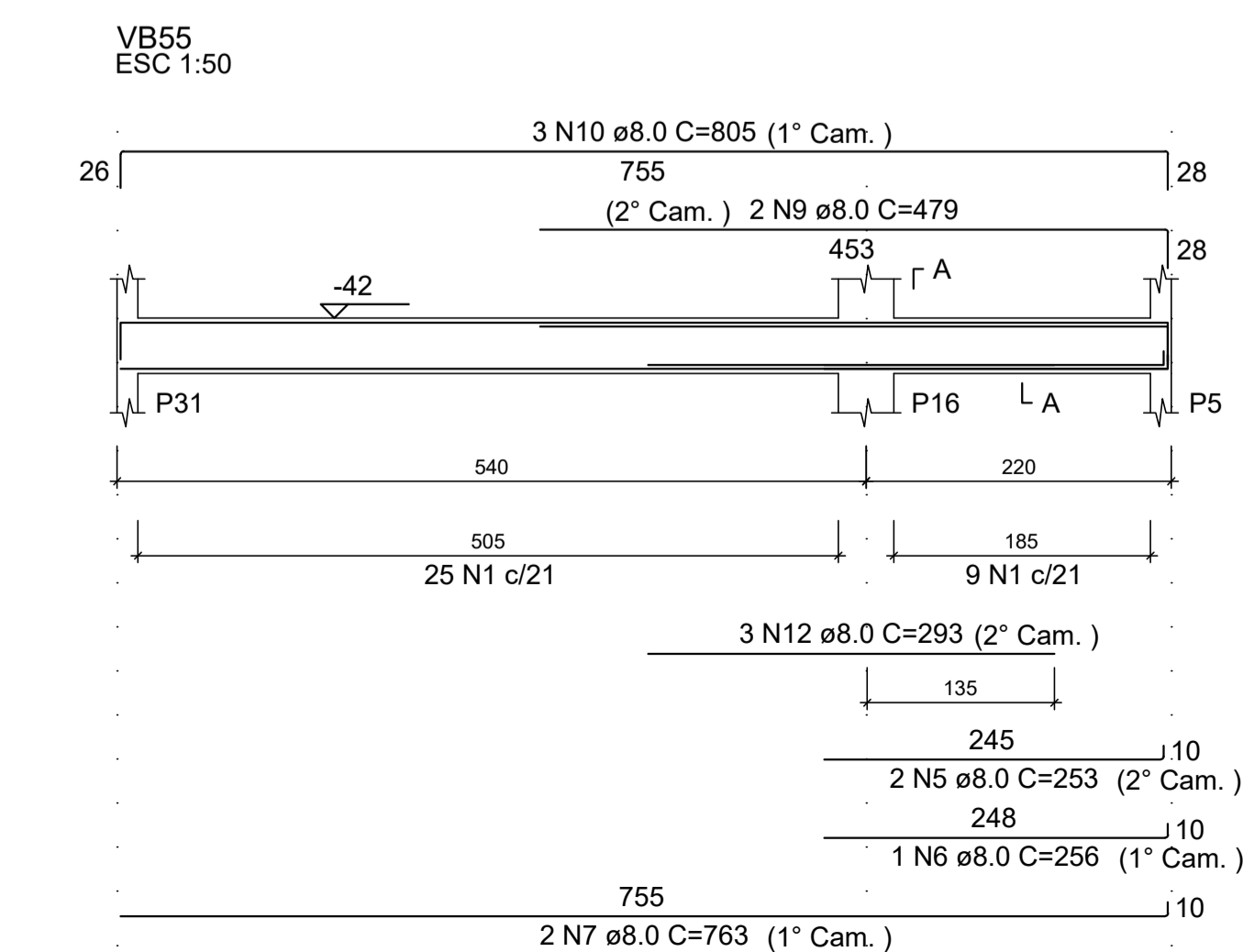
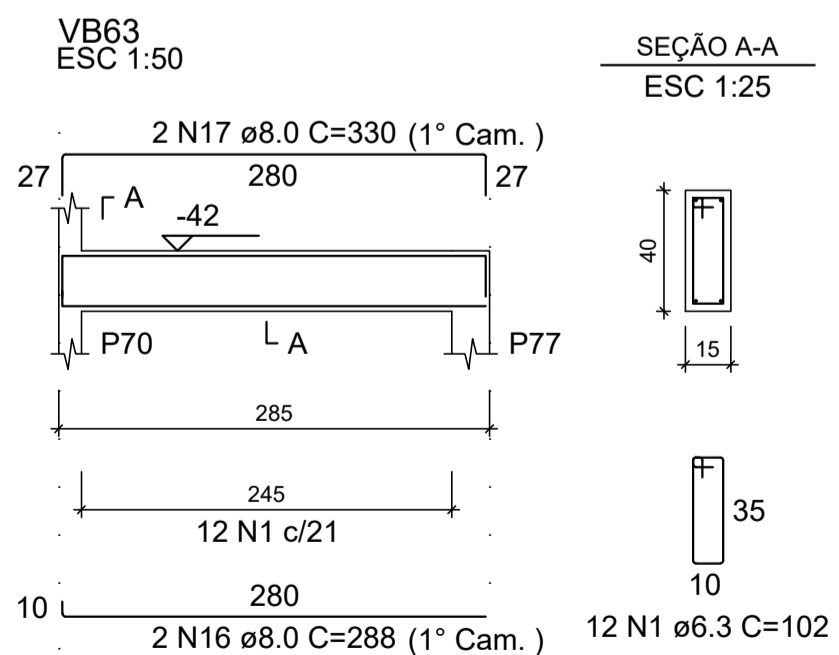
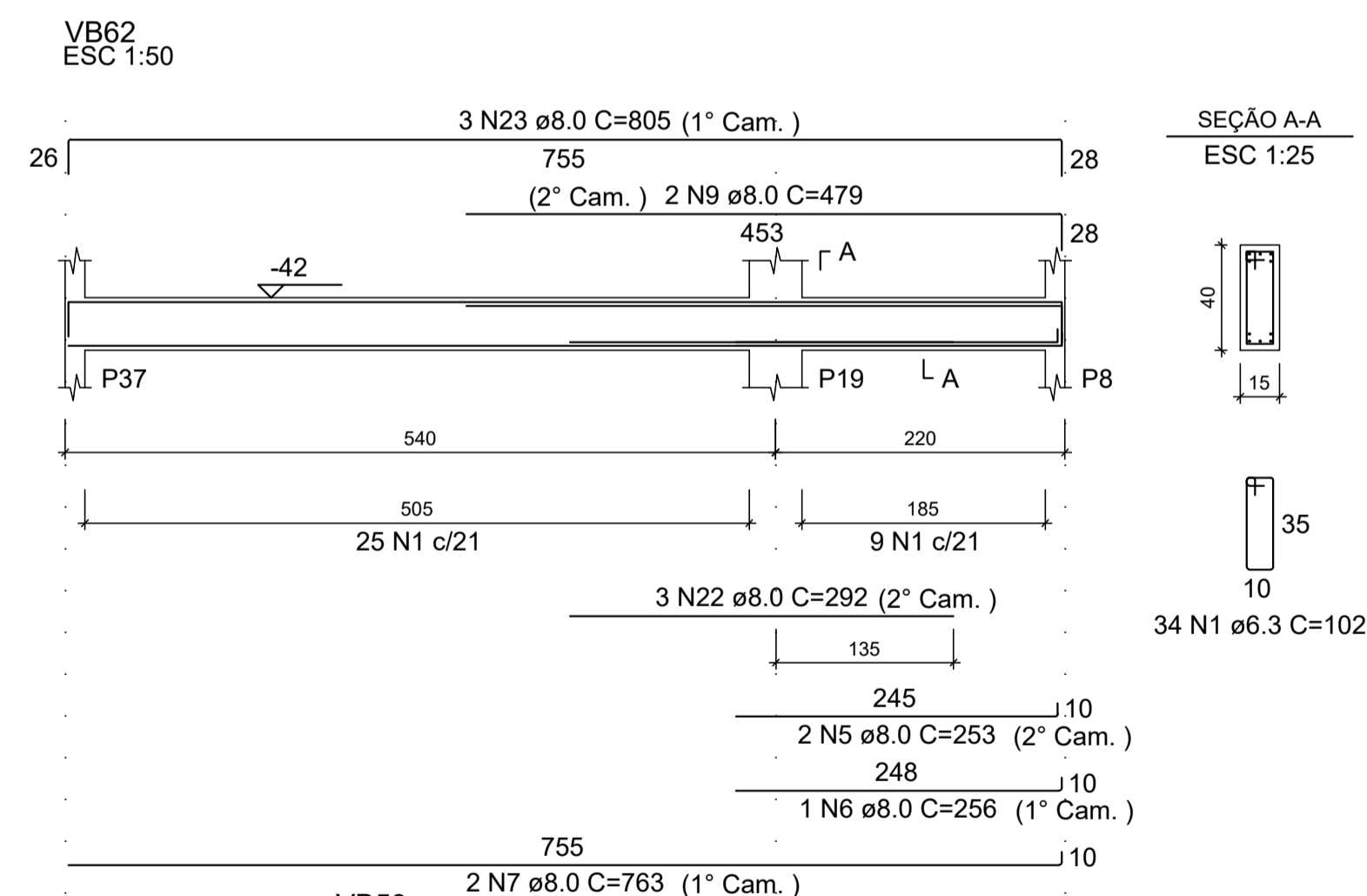
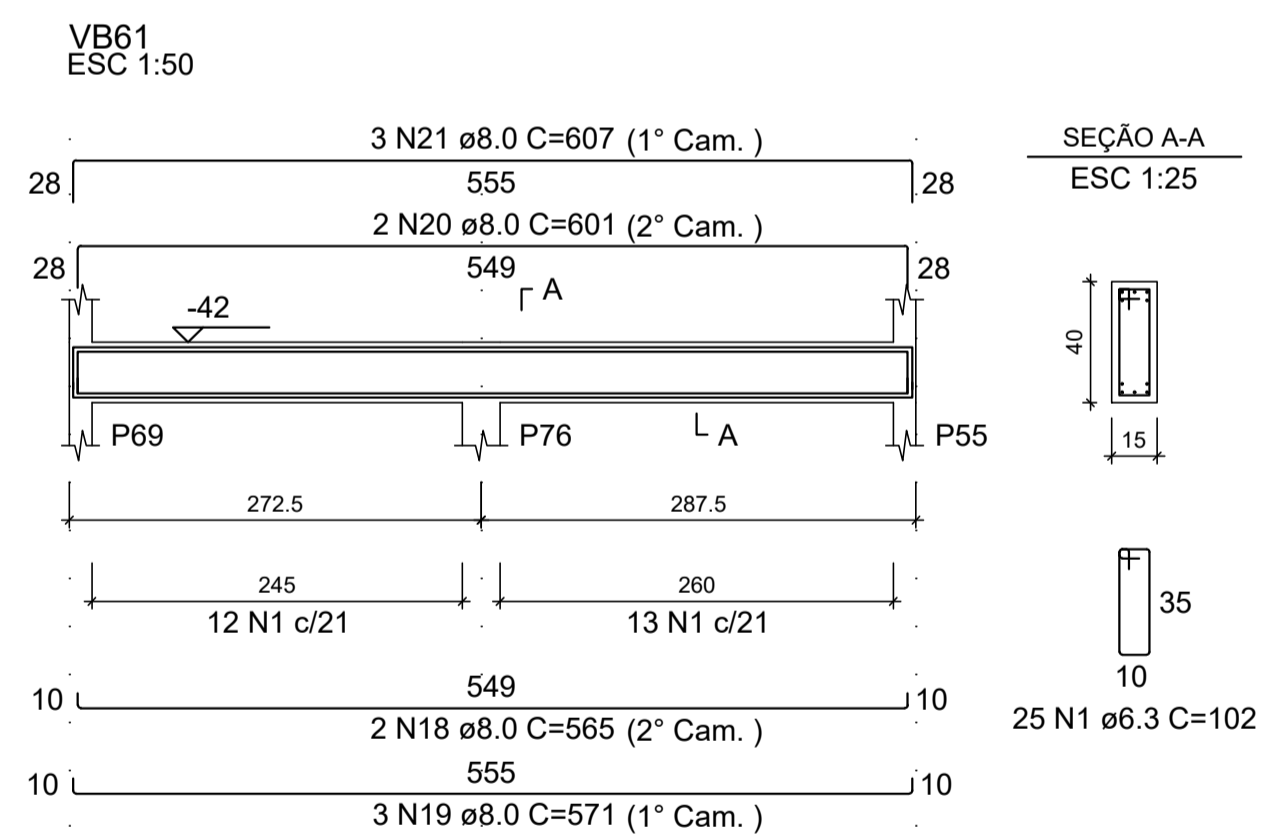
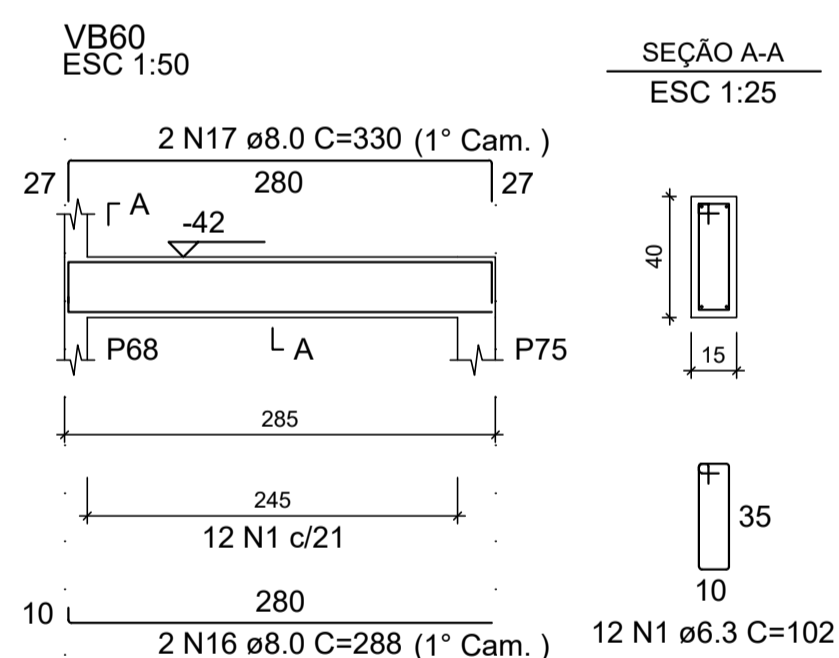
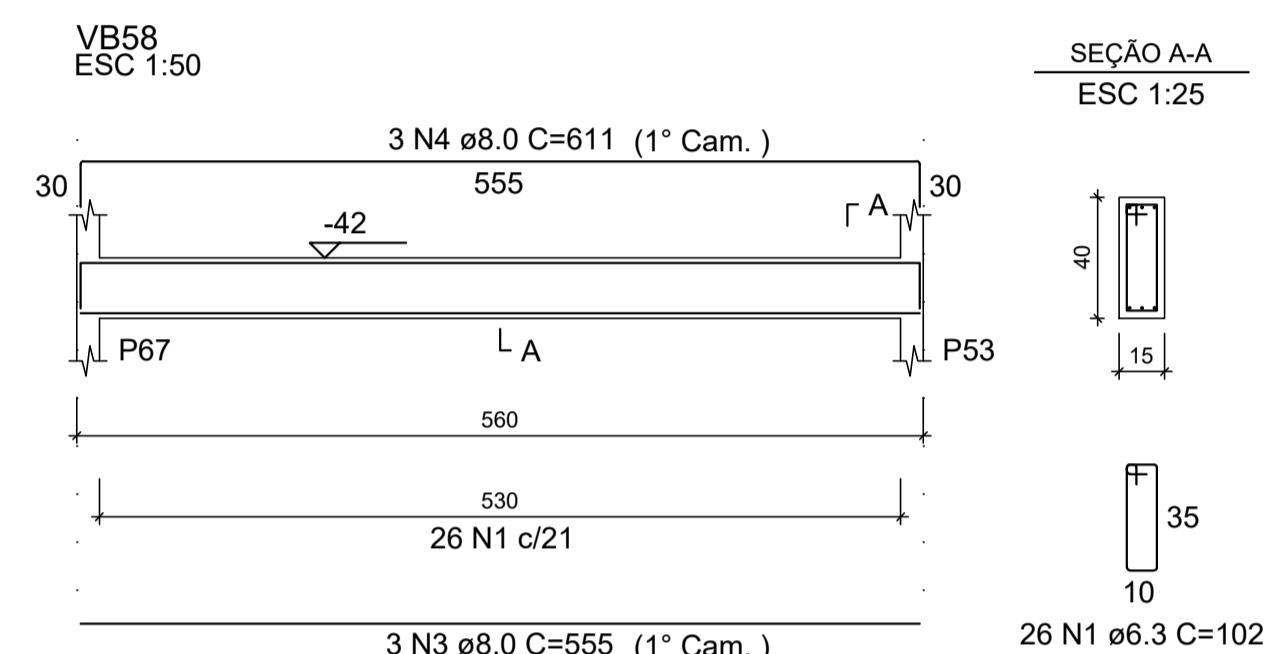
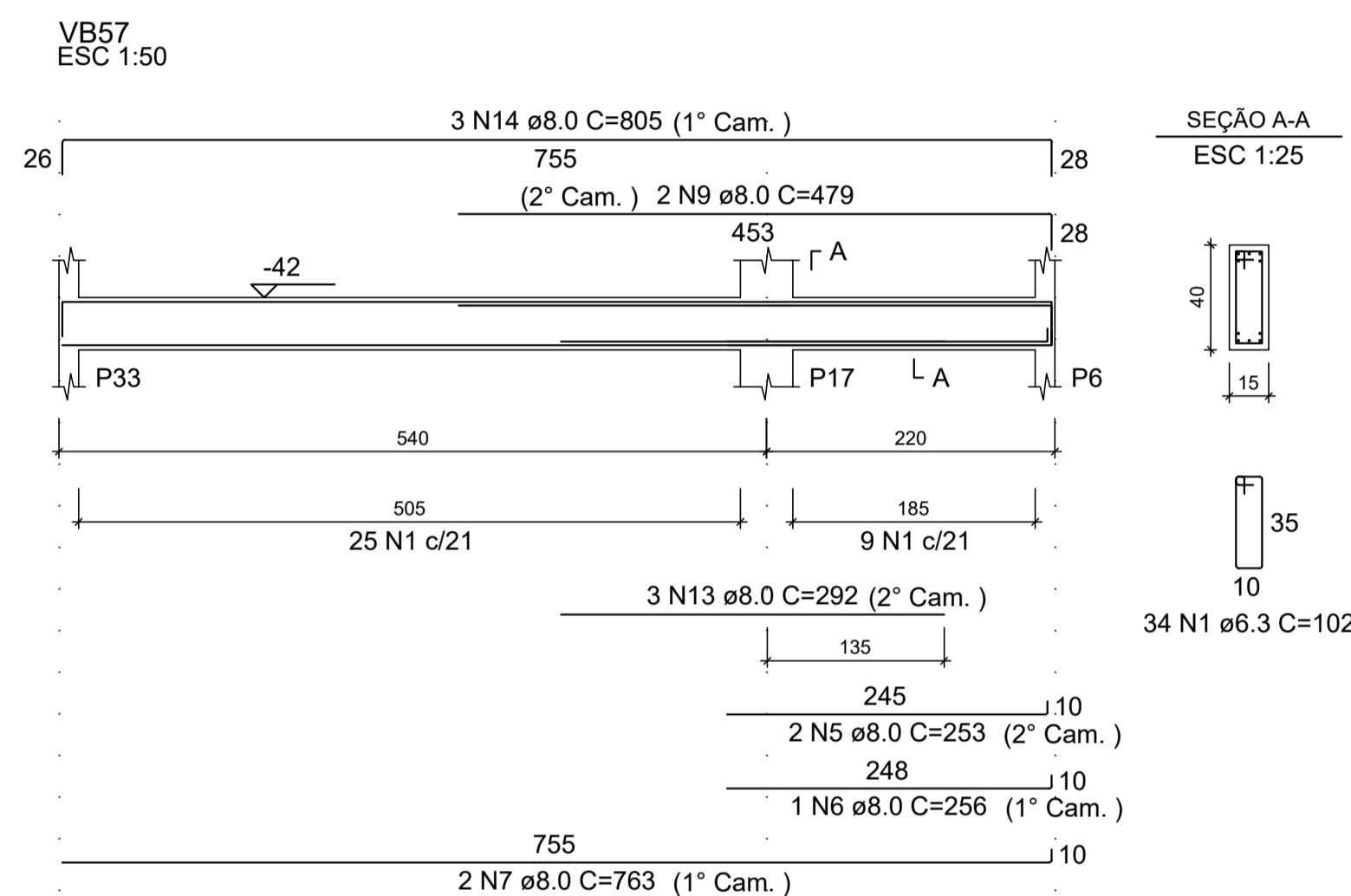
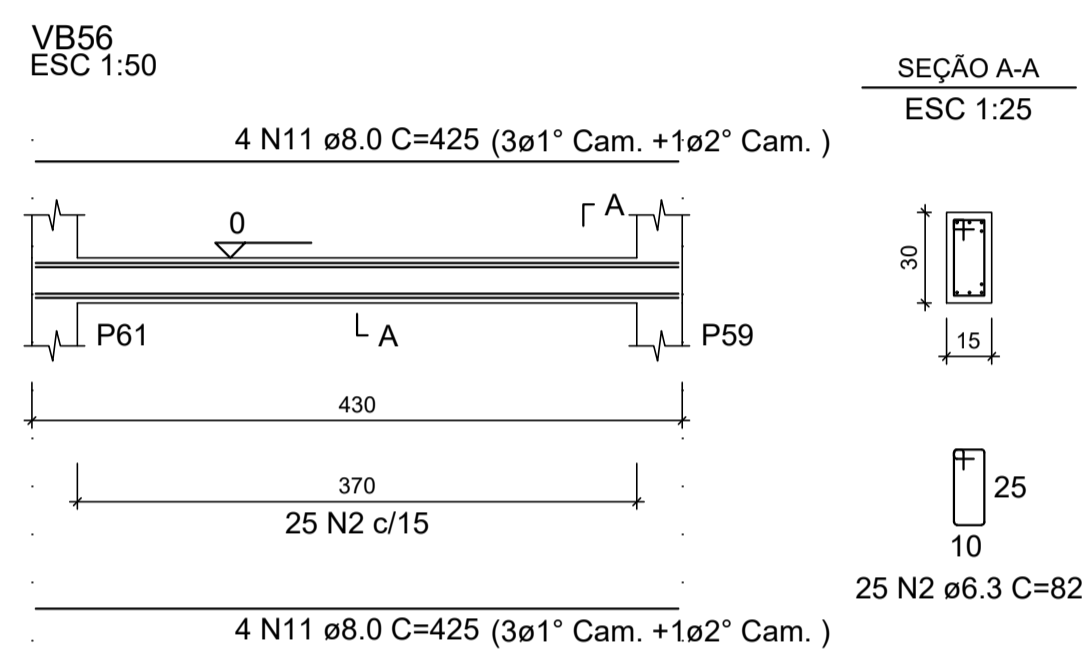
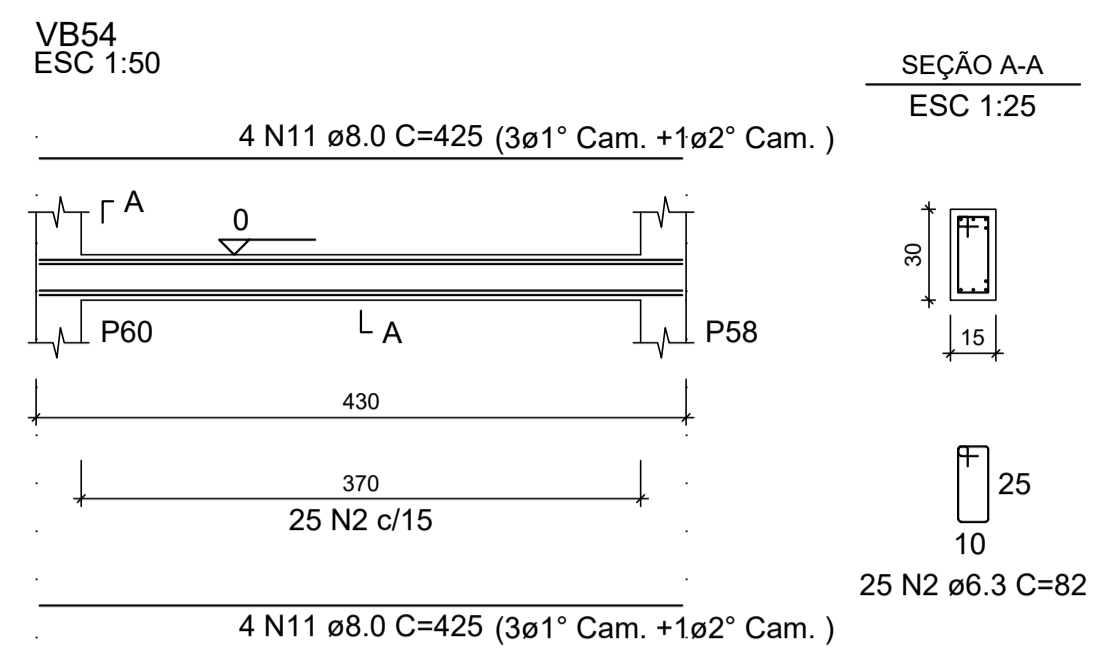
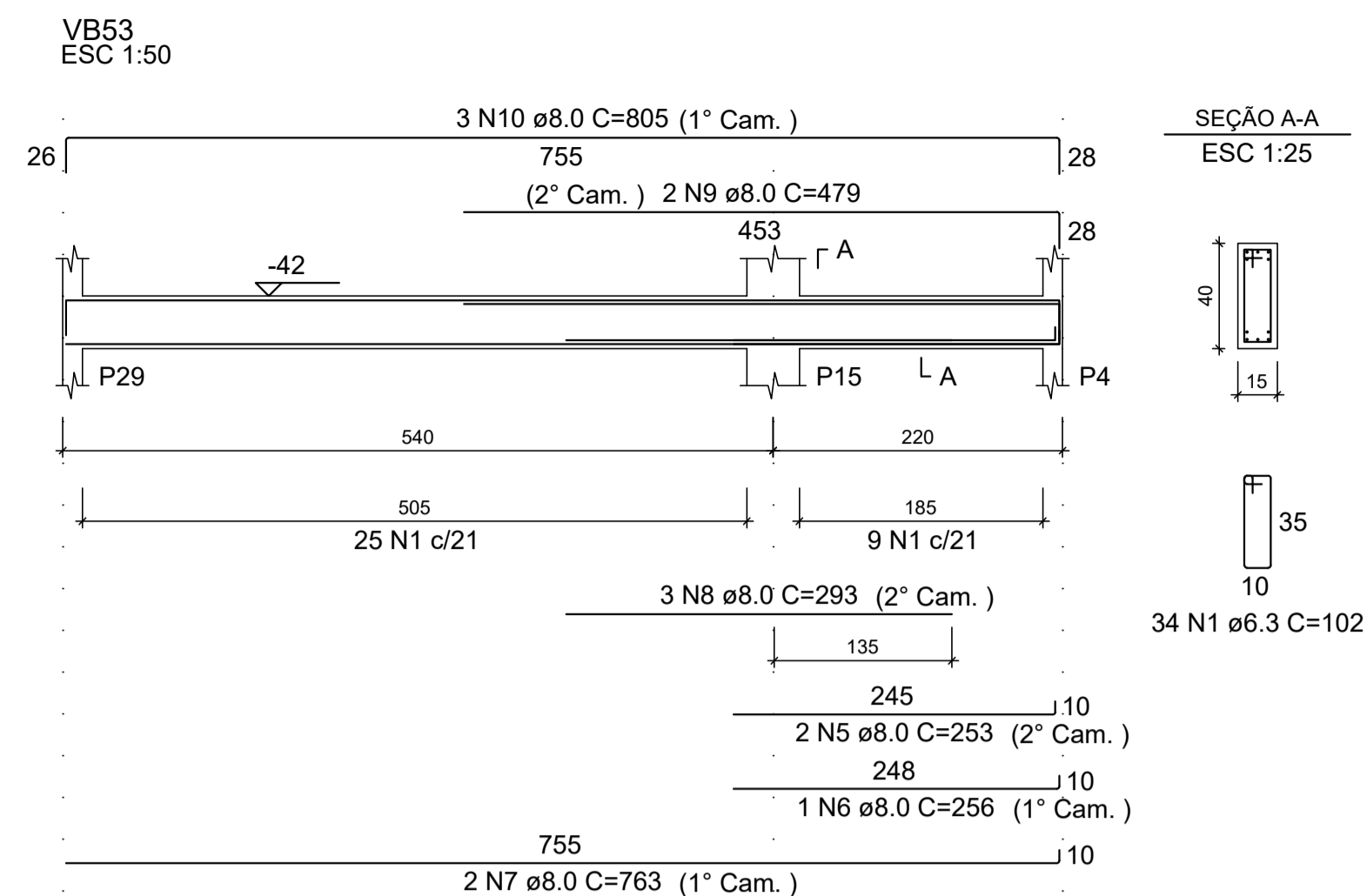
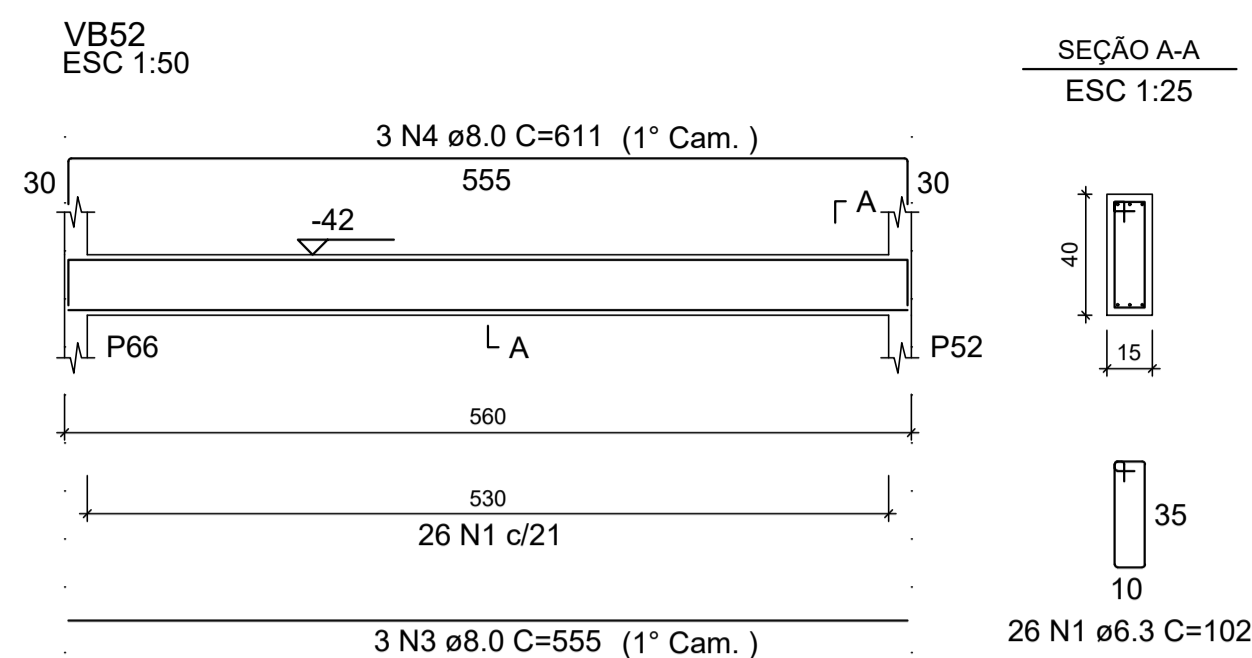


Detalhamento das Vigas - Baldrame

Escala indicada



RELAÇÃO DO AÇO

AÇO	N	DIAM (mm)	QUANT	C.UNIT (cm)	C.TOTAL (cm)
VB52					
VB55					
VB58					
VB61					
VB53					
VB56					
VB59					
VB62					
VB54					
VB57					
VB60					
VB63					
CA50	1	6.3	271	102	27642
	2	6.3	50	82	4100
	3	8.0	6	555	3330
	4	8.0	6	611	3666
	5	8.0	10	253	2530
	6	8.0	5	256	1280
	7	8.0	10	763	7630
	8	8.0	3	293	879
	9	8.0	10	479	4790
	10	8.0	6	805	4830
	11	8.0	16	425	6800
	12	8.0	3	293	879
	13	8.0	3	292	876
	14	8.0	6	805	4830
	15	8.0	3	292	876
	16	8.0	4	288	1152
	17	8.0	4	330	1320
	18	8.0	2	565	1130
	19	8.0	3	571	1713
	20	8.0	2	601	1202
	21	8.0	3	607	1821
	22	8.0	3	292	876
	23	8.0	3	805	2415

RESUMO DO AÇO

AÇO	DIAM (mm)	C.TOTAL (m)	QUANT + 10% (Barras)	PESO + 10% (kg)
CA50	6.3	317.4	30	85.4
	8.0	548.3	51	238
PESO TOTAL (kg)				
CA50	323.4			

Volume de concreto (C-25) = 4.02 m³
Área de forma = 63.92 m²

REV. 01	18/03/21	ALTERAÇÃO DO ACESSO	DAC
REV. 00	19/08/19	EMISSÃO INICIAL	DAC
REVISÃO: DATA :	DESCRICOÃO:		RESP.:



 Rua Miguel Vianna, nº 81, Sala 12 Bairro Morro Chic CEP: 37500-080 - Itajubá / MG Tel: (35) 3623-5720 www.dacengenharia.com.br	GERÊNCIA DE PROJETOS DENIS DE SOUZA SILVA CREA: MG-127.216/D
	COORDENAÇÃO DE PROJETOS ALOISIO CAETANO FERREIRA CREA: MG-97.132/D
	RESPONSÁVEL TÉCNICO ENGR. CIVIL FLÁVIA C. BARBOSA CREA: MG-187.842/D
	PROJETO WILLIAM BARADEL LARI
	DESENHO WILLIAM BARADEL LARI

EMPREENDIMENTO AMPLIAÇÃO DA EM DOUTOR VASCONCELOS COSTA	
ENDEREÇO RUA VENERANDO SCODELER - BAIRRO BELA ITÁLIA POUSO ALEGRE - MINAS GERAIS	DISCIPLINA ESTRUTURAL
ASSUNTO DETALHAMENTO DOS ELEMENTOS ESTRUTURAIS VIGAS - BALDRAME ELEMENTOS E TABELAS DE QUANTIDADES	FASE DO PROJETO EXECUTIVO
DATA INICIAL 19/08/2019	ESCALA INDICADA
REVISÃO R01	ARQUIVO DAC-PMPA-VAS-PE-EST-R01.DWG
FOLHA Nº 11/20	