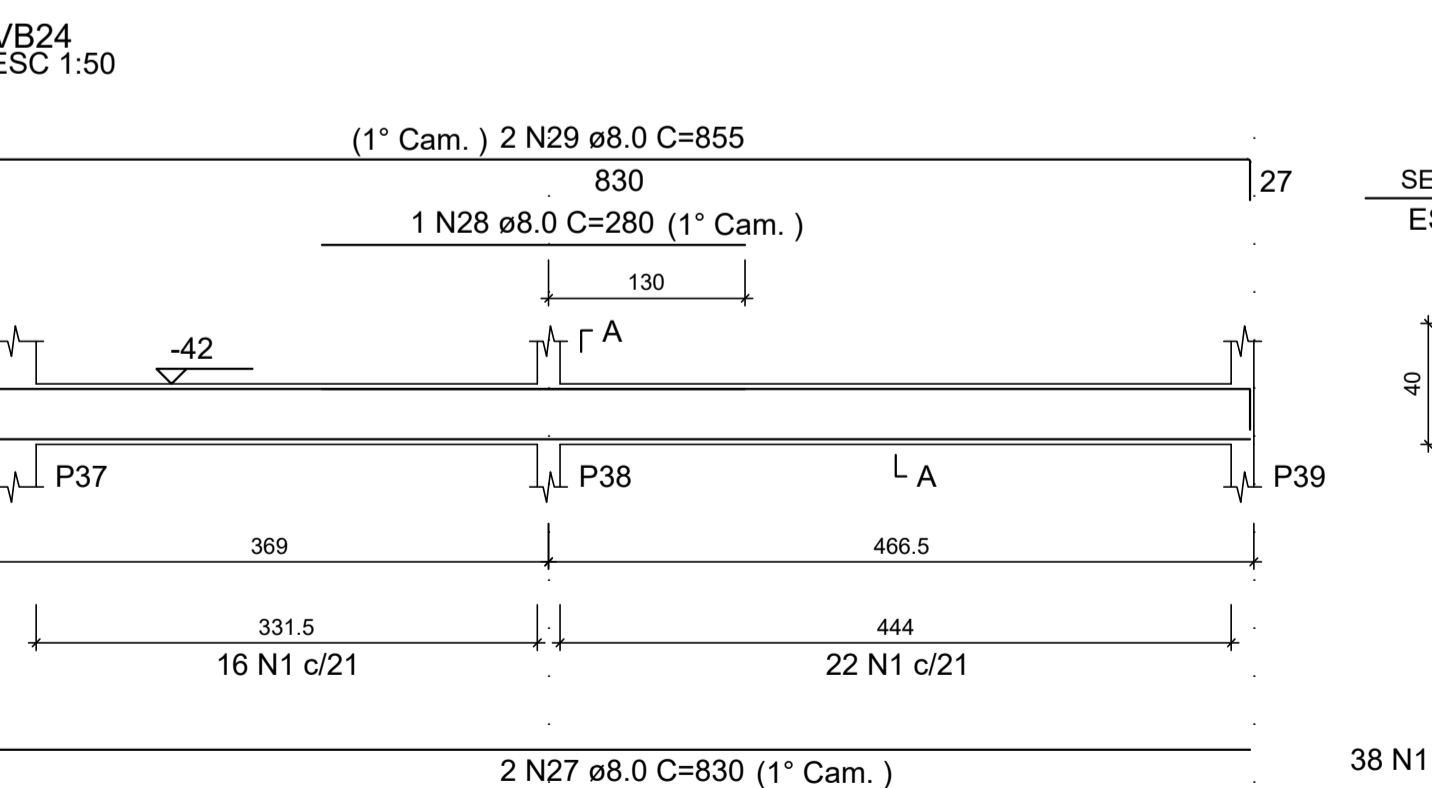
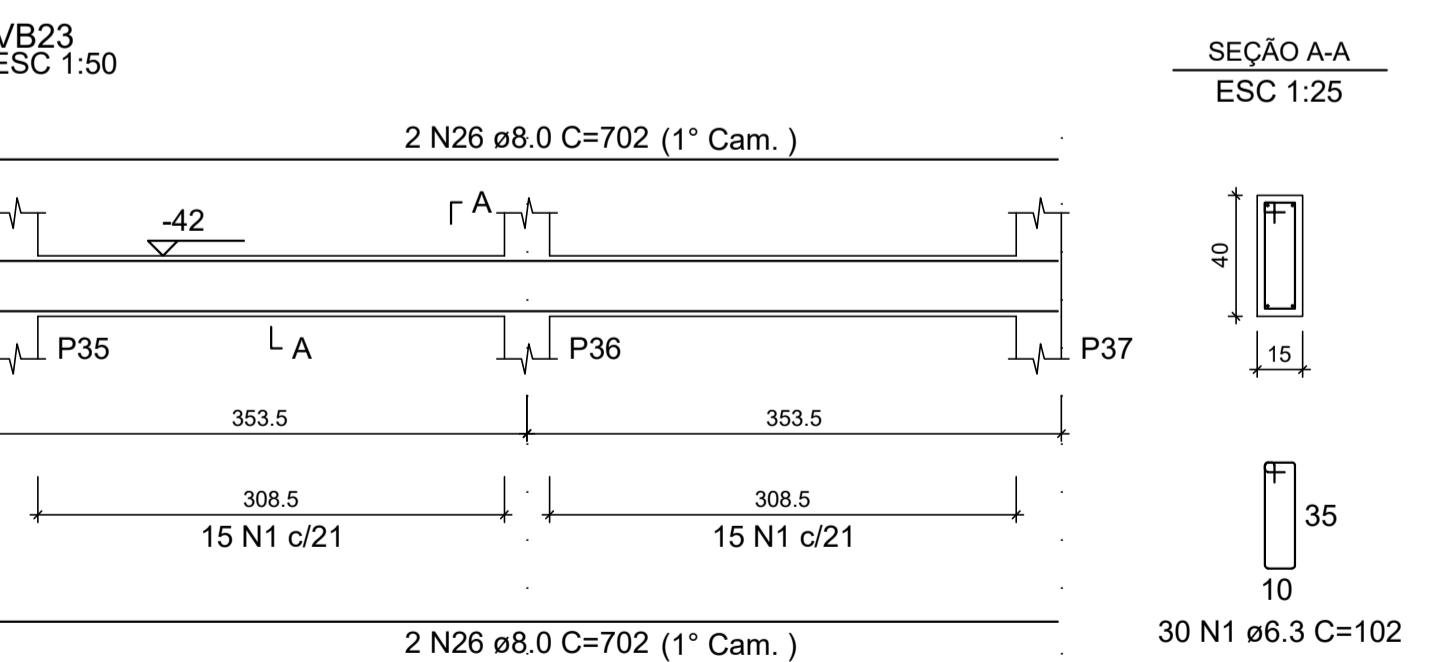
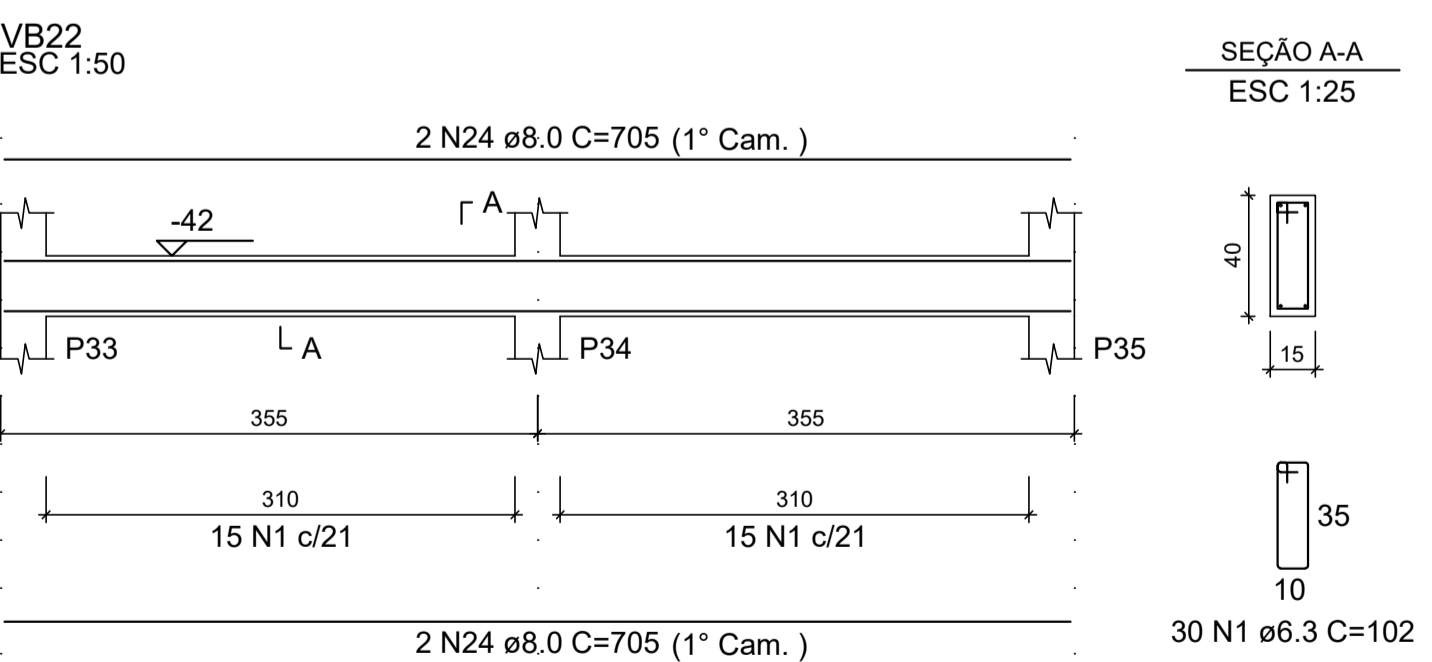
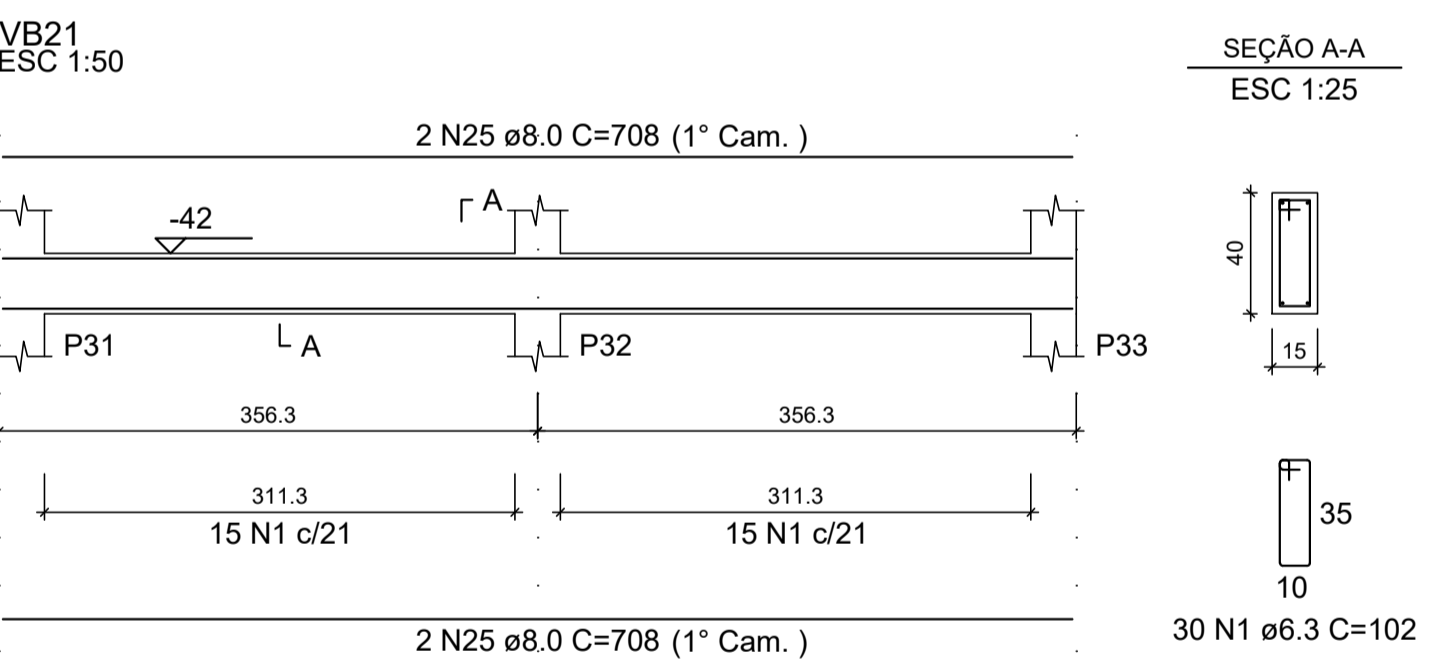
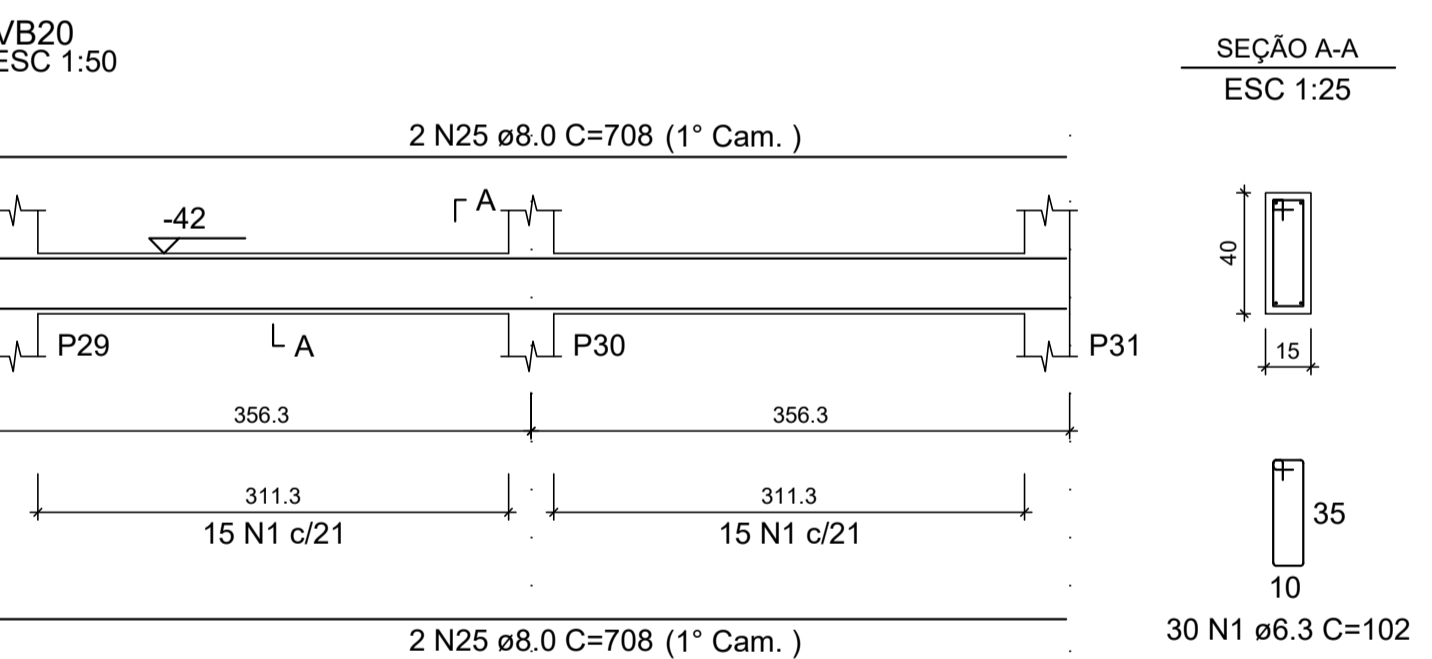
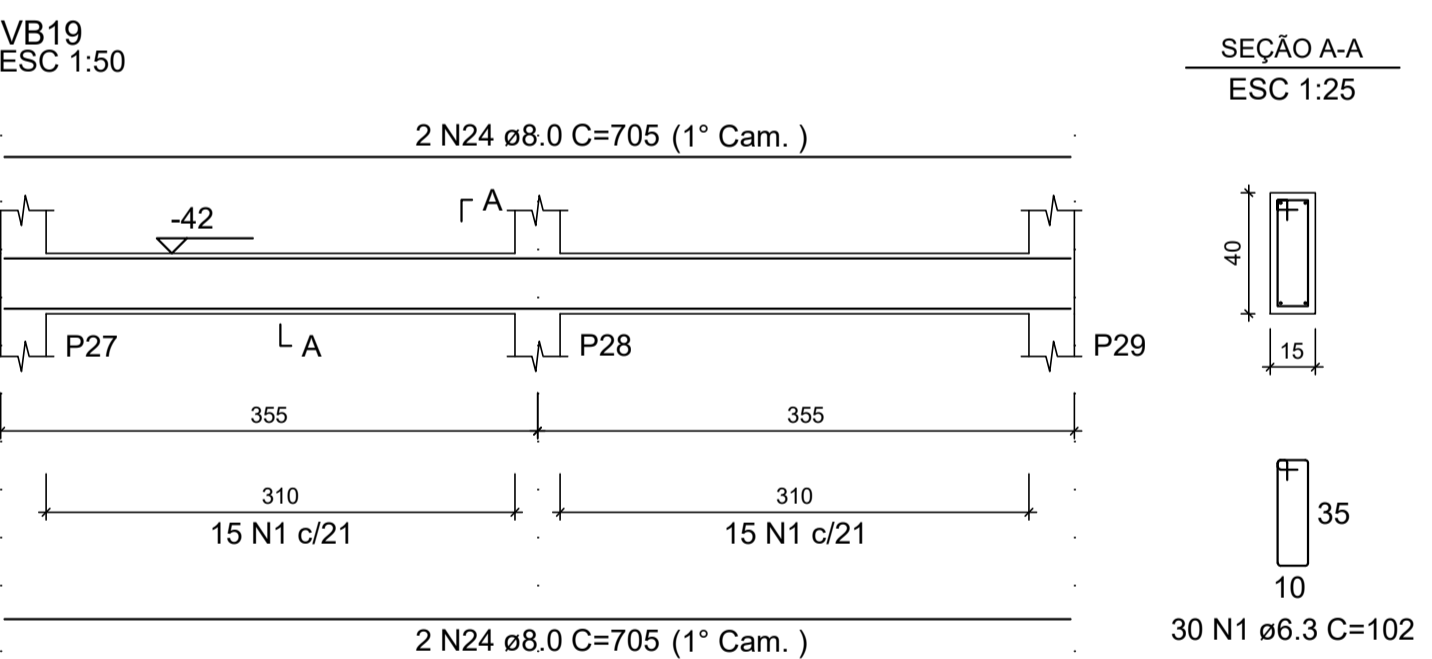
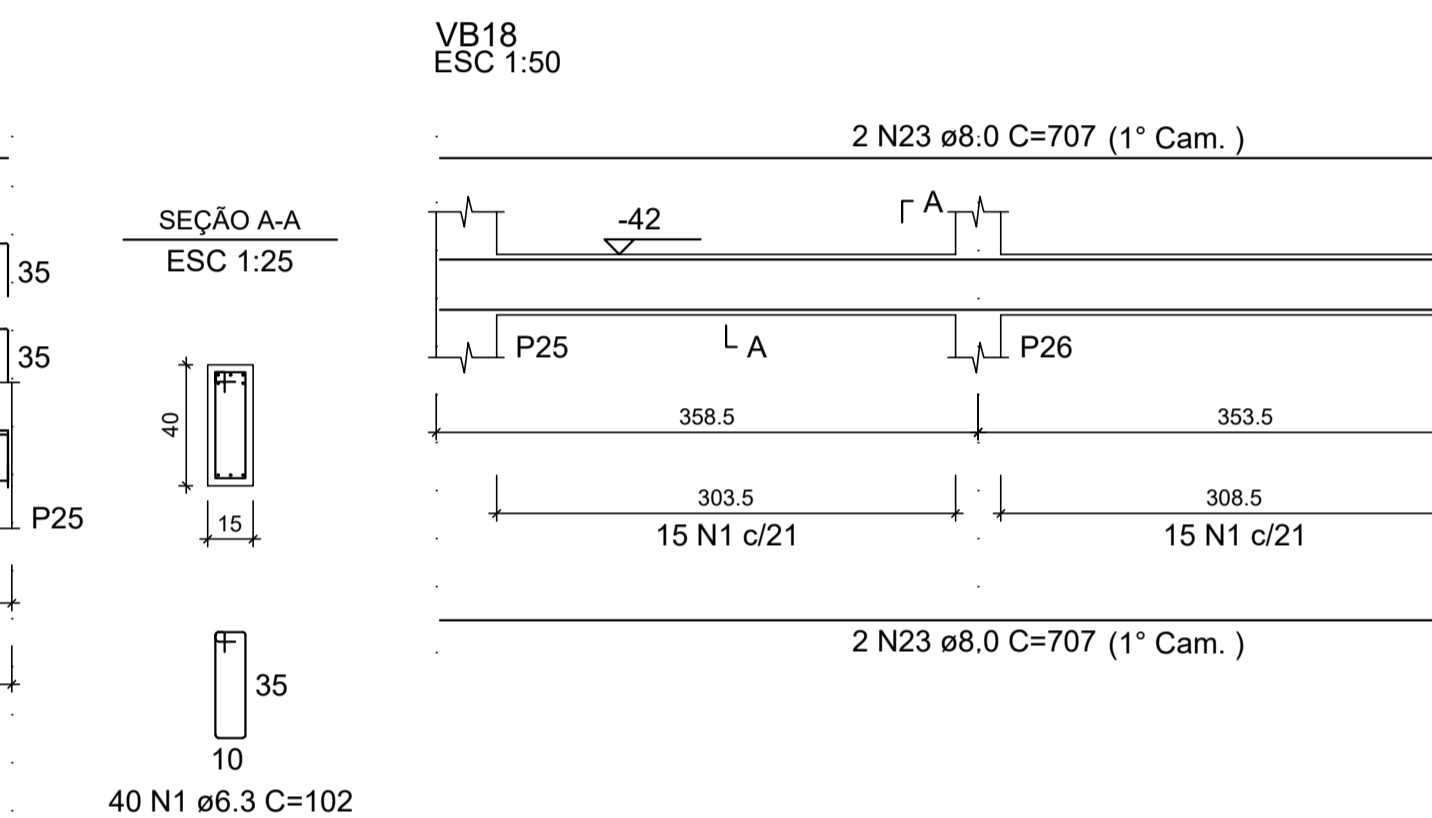
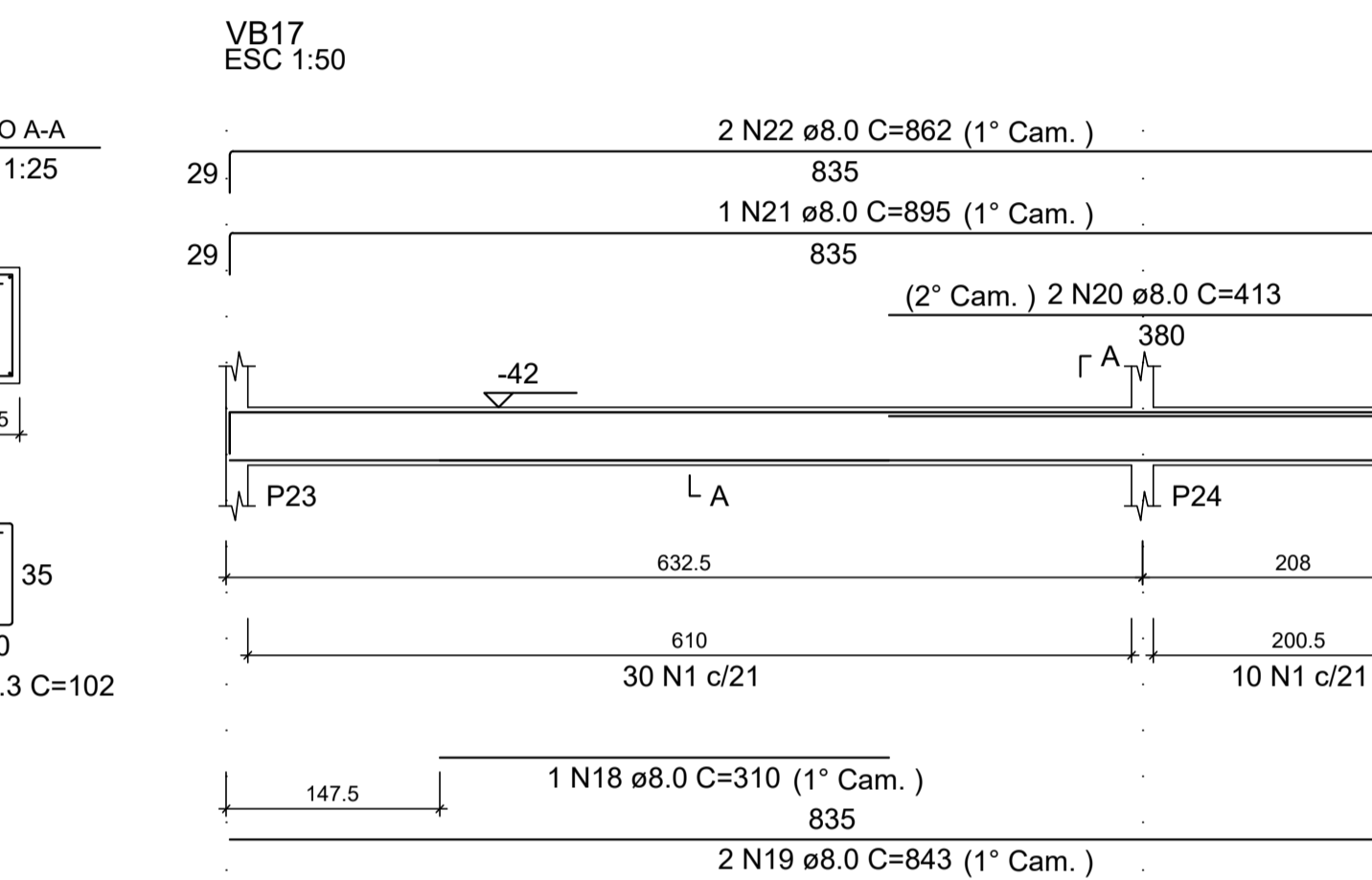
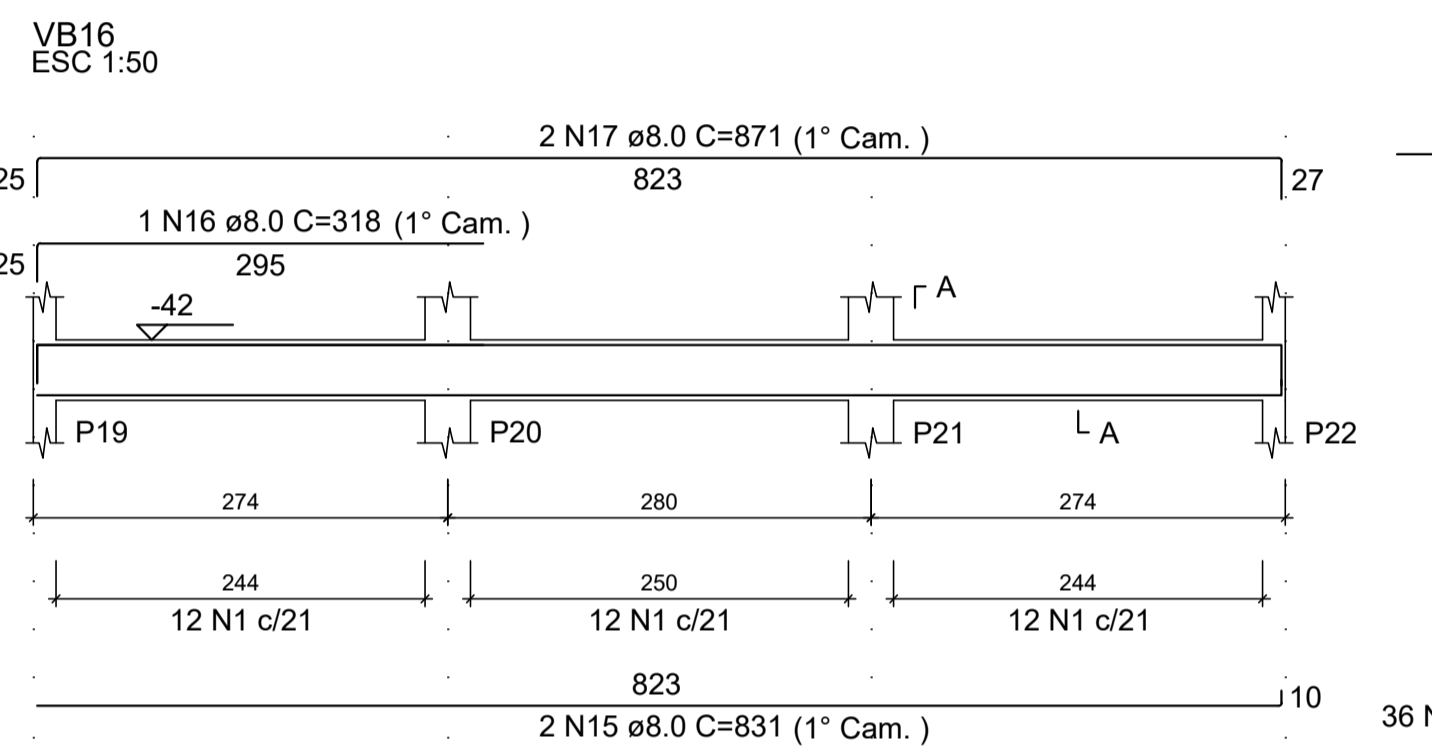
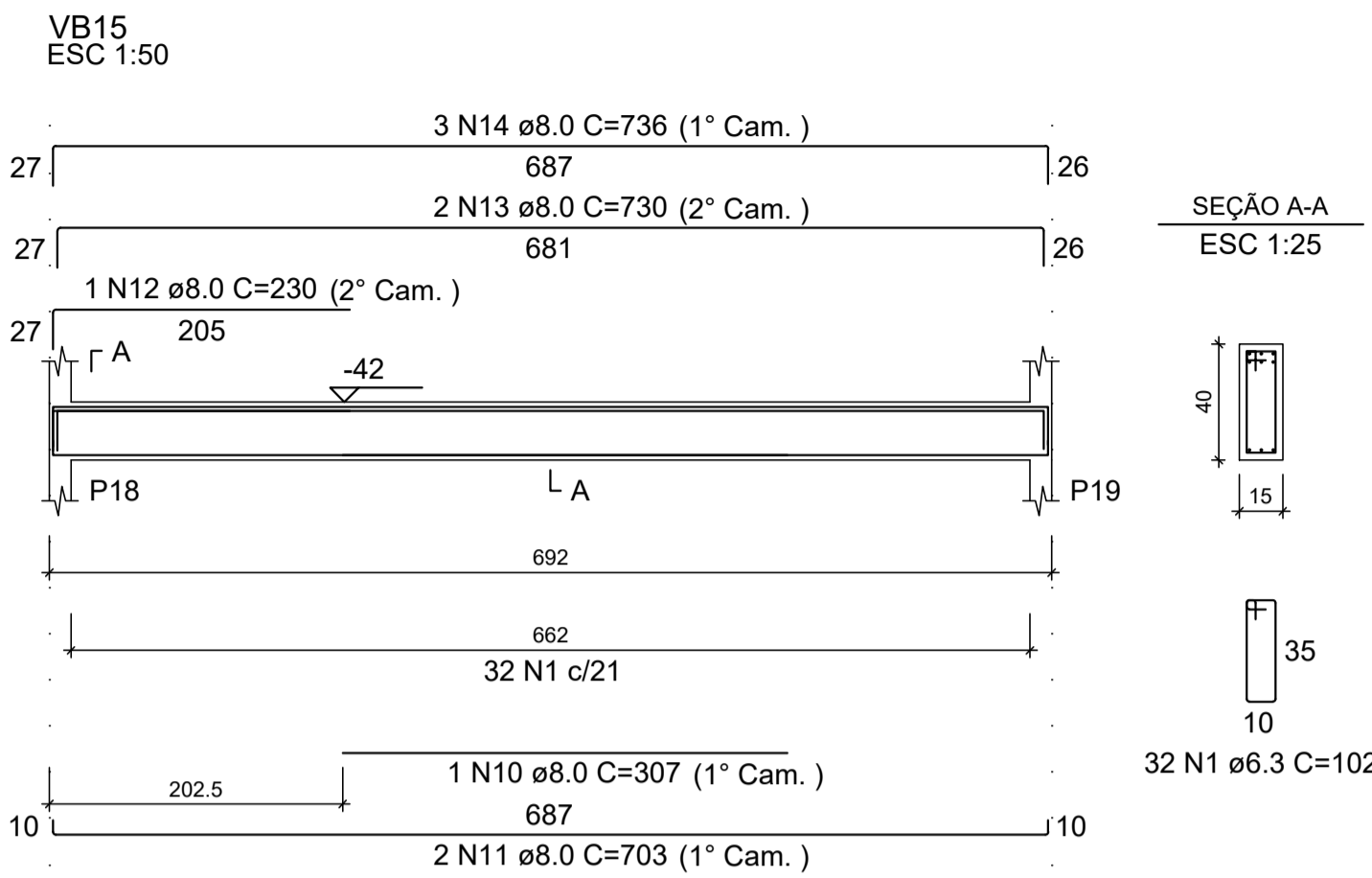
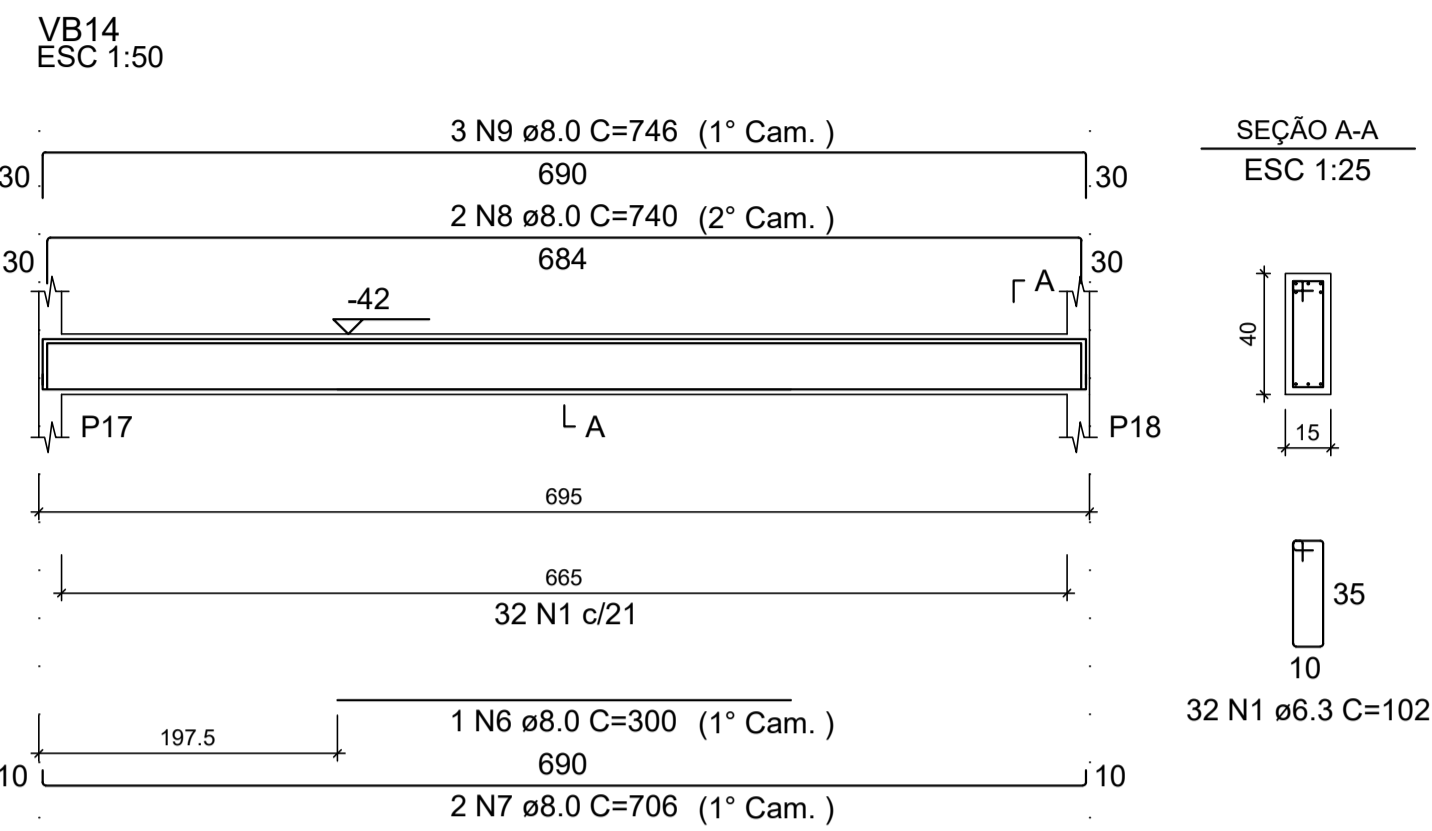
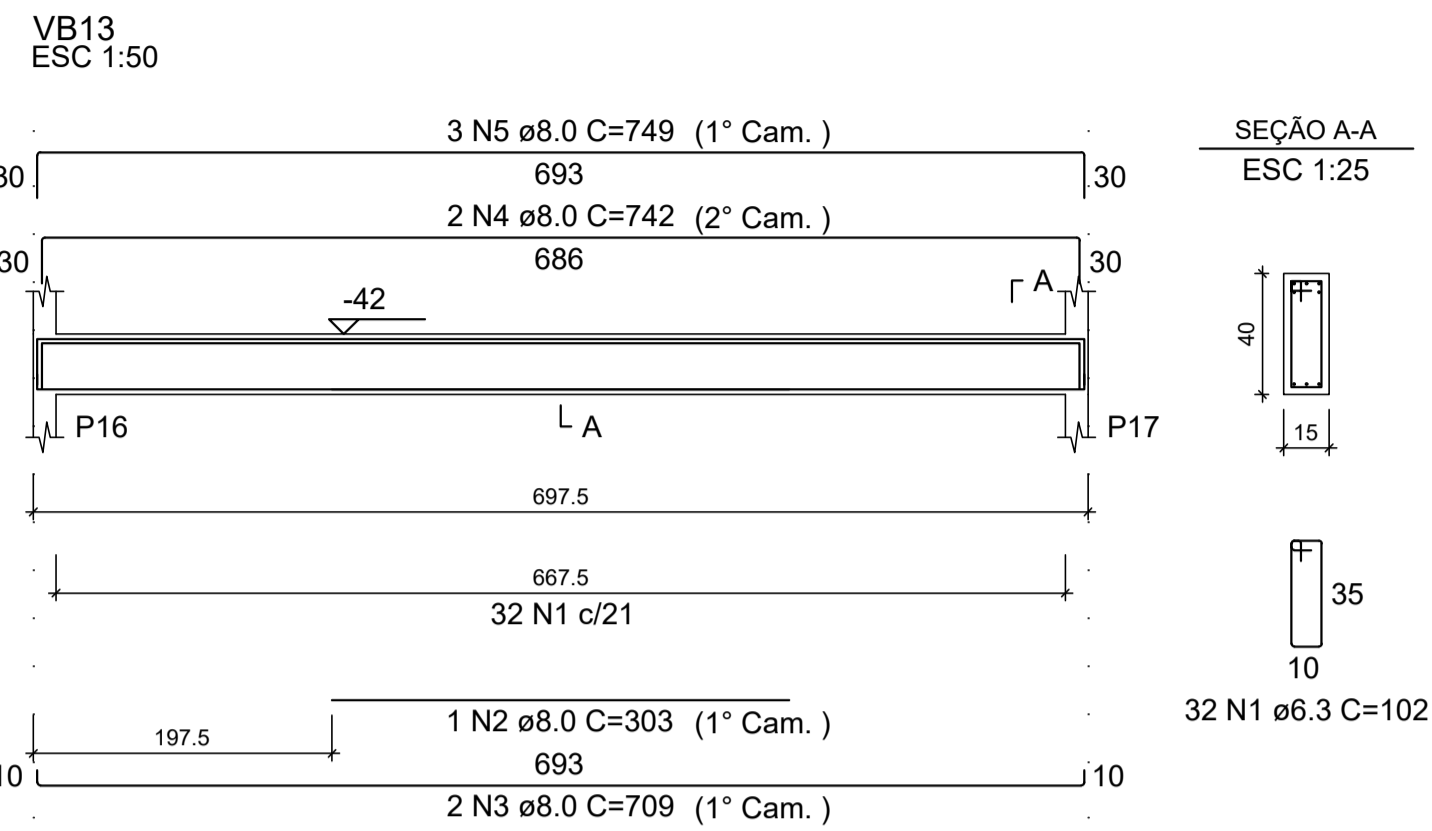


Detalhamento das Vigas - Baldrame

Escala indicada



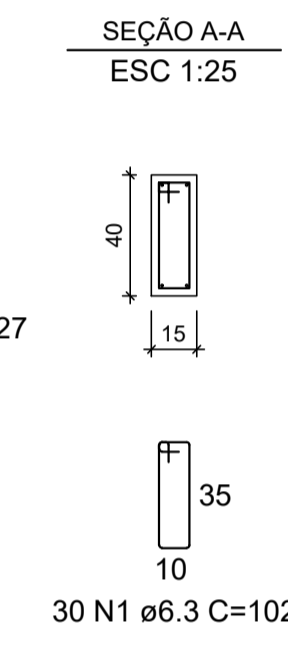
RELAÇÃO DO AÇO

AÇO	N	DIAM (mm)	QUANT	C.UNIT (cm)	C.TOTAL (cm)
CA50	1	6.3	390	102	39780
	2	8.0	1	303	303
	3	8.0	2	709	1418
	4	8.0	2	742	1484
	5	8.0	3	749	2247
	6	8.0	1	300	300
	7	8.0	2	706	1412
	8	8.0	2	740	1480
	9	8.0	3	746	2238
	10	8.0	1	307	307
	11	8.0	2	703	1406
	12	8.0	1	230	230
	13	8.0	2	730	1460
	14	8.0	3	736	2208
	15	8.0	2	831	1662
	16	8.0	1	318	318
	17	8.0	2	871	1742
	18	8.0	1	310	310
	19	8.0	2	843	1686
	20	8.0	2	413	826
	21	8.0	1	895	895
	22	8.0	2	862	1724
	23	8.0	4	707	2828
	24	8.0	8	705	5640
	25	8.0	8	708	5664
	26	8.0	4	702	2808
	27	8.0	2	830	1660
	28	8.0	1	280	280
	29	8.0	2	855	1710

RESUMO DO AÇO

AÇO	DIAM (mm)	C.TOTAL (m)	QUANT + 10% (Barras)	PESO + 10% (kg)
CA50	6.3	397.8	37	107.1
	8.0	462.5	43	200.7
PESO TOTAL (kg)				
CA50				307.8

Volume de concreto (C-25) = 5.31 m³
Área de forma = 84.10 m²



REV. 01	18/03/21	ALTERAÇÃO DO ACESSO	DAC
REV. 00	19/08/19	EMISSÃO INICIAL	DAC
REVISÃO: DATA :	DESCRIÇÃO:		RESP.:



DAC Engenharia		GERÊNCIA DE PROJETOS
Rua Miguel Vianna, nº 81, Sala 12 Bairro Morro Chic CEP: 37500-080 - Itajubá / MG Tel: (35) 3623-5720 www.dacengenharia.com.br		DENIS DE SOUZA SILVA CREA: MG-127.216/D
PROJETO		COORDENAÇÃO DE PROJETOS
ALOSIO CAETANO FERREIRA CREA: MG-97.132/D		RESPONSÁVEL TÉCNICO
WILLIAM BARADEL LARI CREA: MG-187.842/D		DESENHO
WILLIAM BARADEL LARI		

AMPLIAÇÃO DA EM DOUTOR VASCONCELOS COSTA		DISCIPLINA
RUA VENERANDO SCODELER - BAIRRO BELA ITÁLIA POUSO ALEGRE - MINAS GERAIS		ESTRUTURAL
ASSUNTO		FASE DO PROJETO
DETALHAEMNTO DOS ELEMENTOS ESTRUTURAIS VIGAS - BALDRAME ELEMENTOS E TABELAS DE QUANTIDADES		EXECUTIVO
DATA INICIAL		FOLHA Nº
19/08/2019		08/20
ESCALA	REVISÃO	ARQUIVO
INDICADA	R01	DAC-PMPA-VAS-PE-EST-R01.DWG