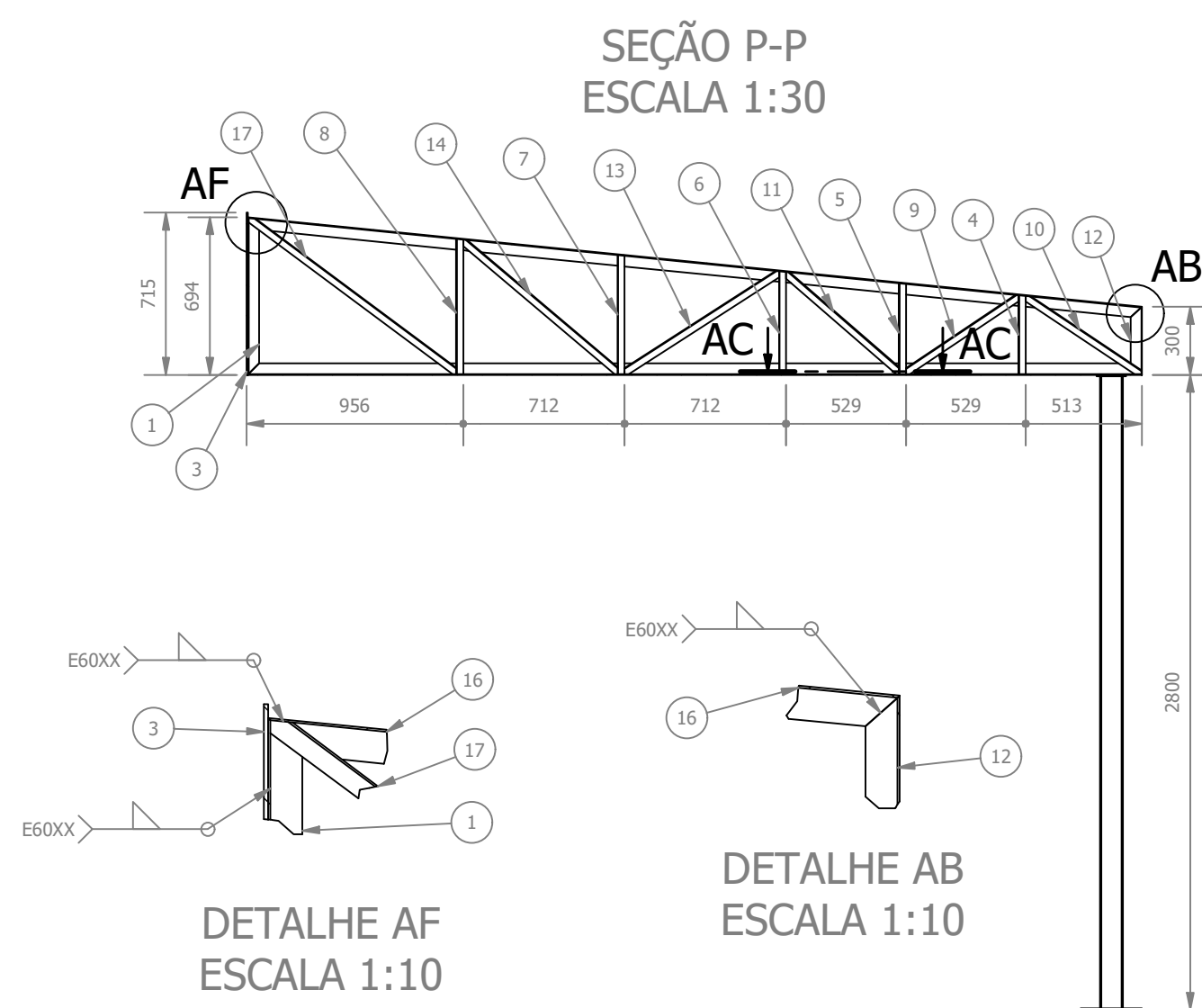
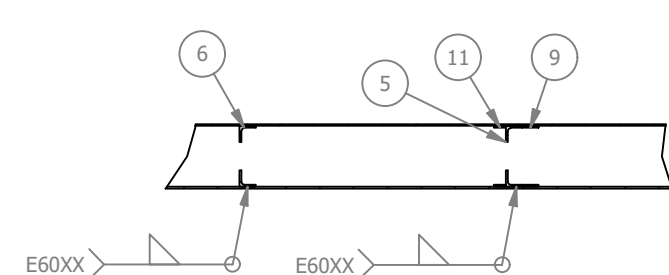


TR4 (1:30)

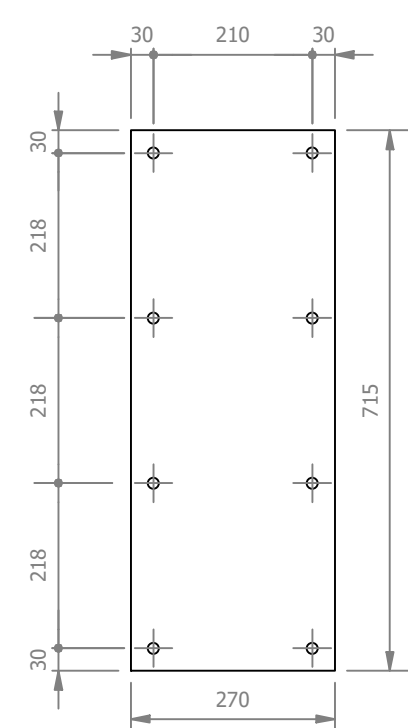


DETALHE AF ESCALA 1:10

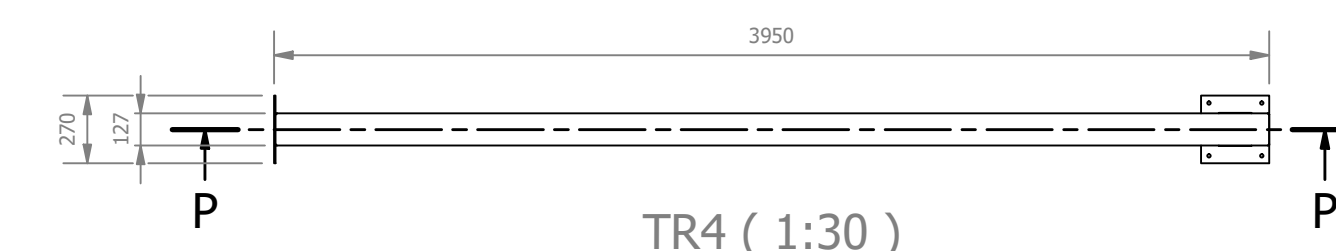
DETALHE AB ESCALA 1:10



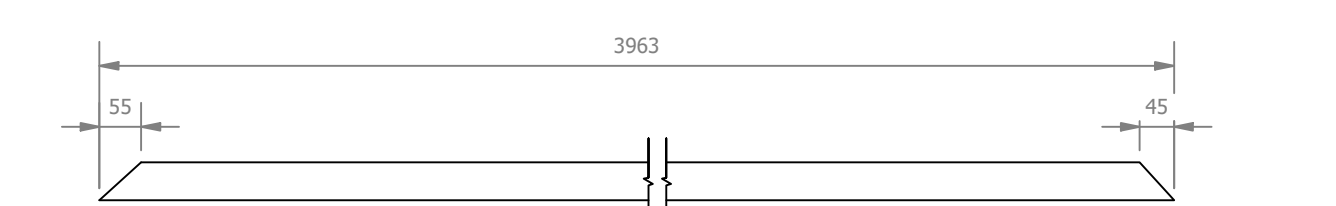
SEÇÃO AC-AC ESCALA 1:15



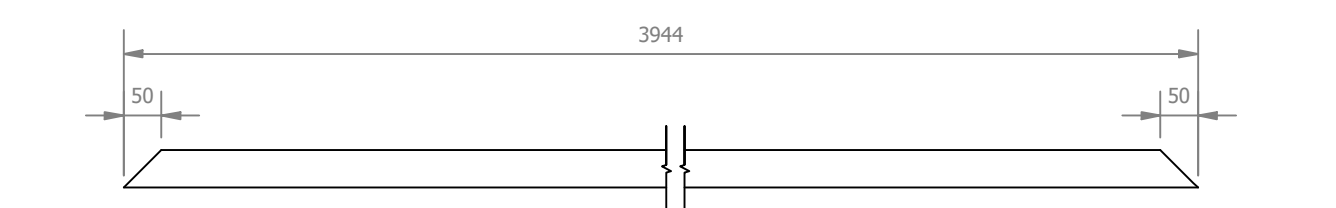
Ch5 (1:10)



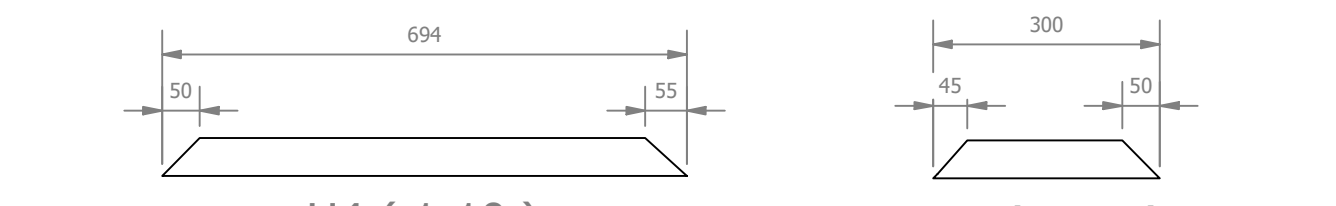
TR4 (1:30)



U2 (1:10)



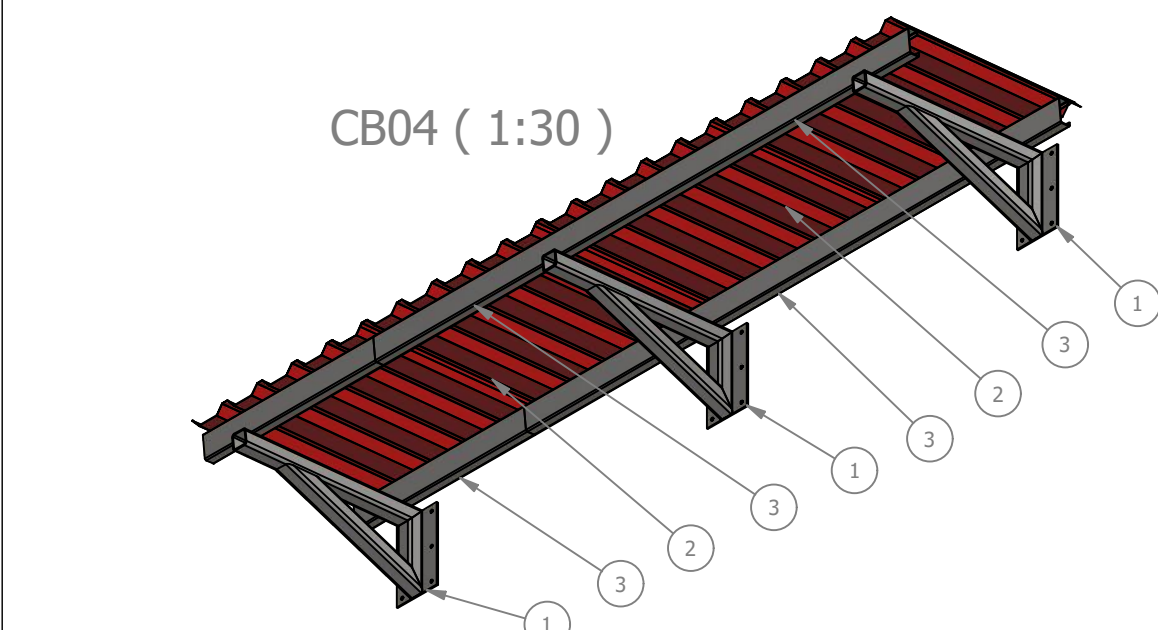
U3 (1:10)



U4 (1:10)

U1 (1:10)

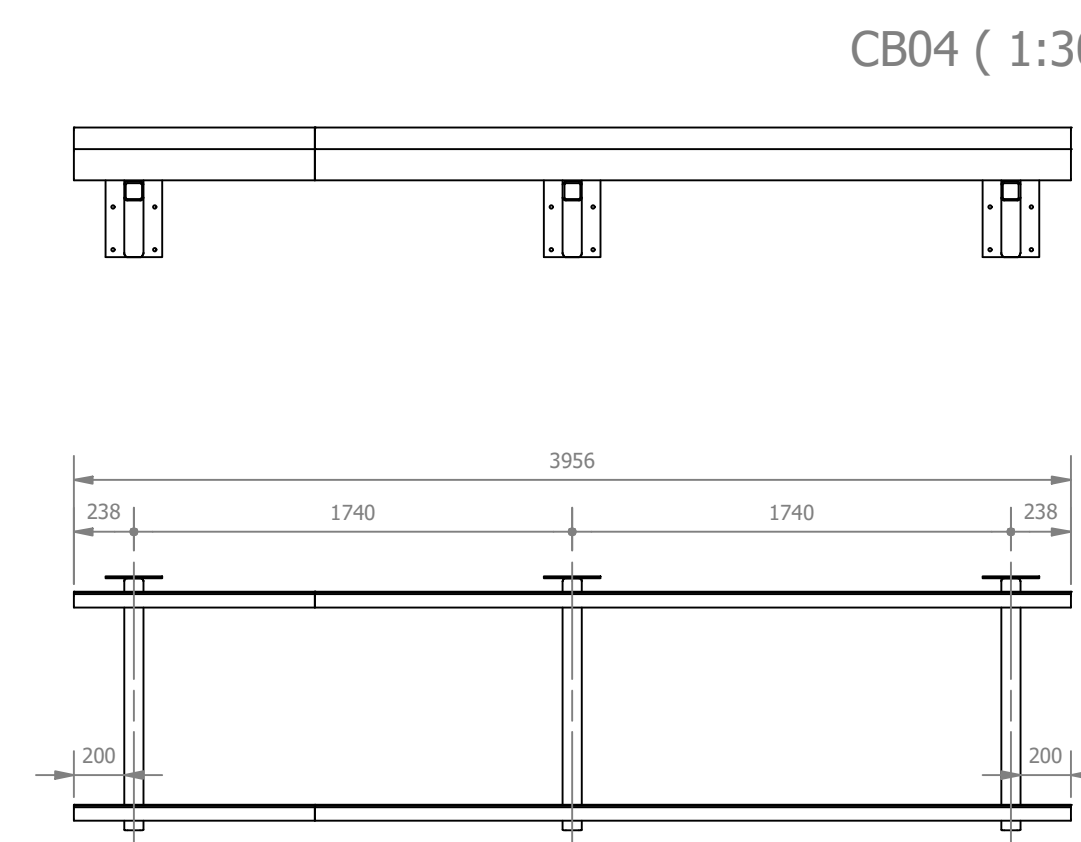
ID	ITEM	QTD	DESCRIÇÃO	COMPRIM.	MATERIAL	PESO
1	U4	1	Perfil U 127x50x3	694	Aço 1020	3,4 kg
2	P1	1				55,1 kg
3	Ch5	1	715 x 270 x 6,35		Aço ASTM A36	9,6 kg
4	L1	2	Cantoneira L 1.1/4 x 1.1/4 x 1/8	348	Aço ASTM A36	0,5 kg
5	L2	2	Cantoneira L 1.1/4 x 1.1/4 x 1/8	401	Aço ASTM A36	0,6 kg
6	L3	2	Cantoneira L 1.1/4 x 1.1/4 x 1/8	454	Aço ASTM A36	0,7 kg
7	L4	2	Cantoneira L 1.1/4 x 1.1/4 x 1/8	525	Aço ASTM A36	0,8 kg
8	L5	2	Cantoneira L 1.1/4 x 1.1/4 x 1/8	597	Aço ASTM A36	0,9 kg
9	L6	2	Cantoneira L 1.1/4 x 1.1/4 x 1/8	607	Aço ASTM A36	0,9 kg
10	L7	2	Cantoneira L 1.1/4 x 1.1/4 x 1/8	616	Aço ASTM A36	0,9 kg
11	L8	2	Cantoneira L 1.1/4 x 1.1/4 x 1/8	671	Aço ASTM A36	1 kg
12	U1	1	Perfil U 127x50x3	300	Aço 1020	1,4 kg
13	L9	2	Cantoneira L 1.1/4 x 1.1/4 x 1/8	818	Aço ASTM A36	1,3 kg
14	L10	2	Cantoneira L 1.1/4 x 1.1/4 x 1/8	903	Aço ASTM A36	1,4 kg
15	U2	1	Perfil U 127x50x3	3944	Aço 1020	20 kg
16	U3	1	Perfil U 127x50x3	3963	Aço 1020	20,1 kg
17	L11	2	Cantoneira L 1.1/4 x 1.1/4 x 1/8	1145	Aço ASTM A36	1,8 kg



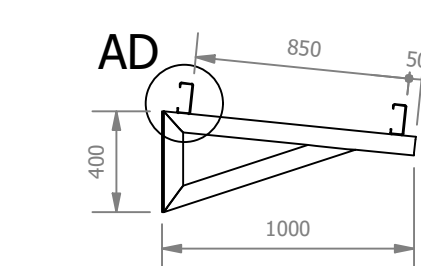
CB04 (1:30)

PESO DA ESTRUTURA SEM TELHAS E SEM CALHA: 137,92 kg

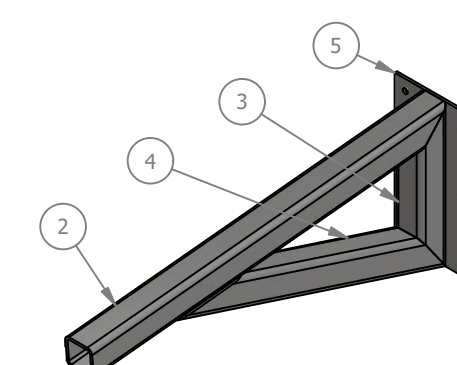
ID	ITEM	QTD	DESCRIÇÃO	COMPRIM.	MATERIAL	PESO
1	TR5	3				29,7 kg
2	Telha TR40 - 980mm útil (5)	5	TR40-980 x 0,5	1030	Aço Galvanizado	5,1 kg
3	TERÇA 120x52x19x3	4	120 x 52 x 19 x 3	3000	Aço 1020	17,1 kg



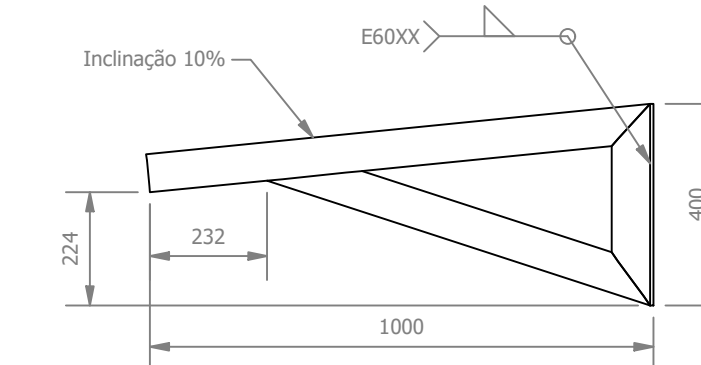
CB04 (1:30)



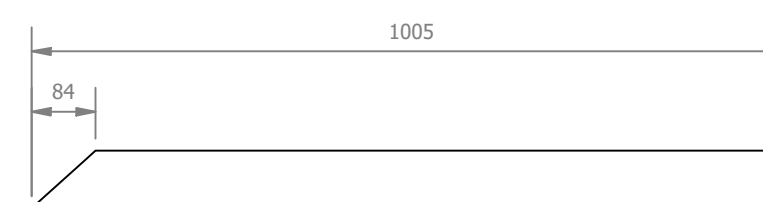
DETALHE AD ESCALA 1:10



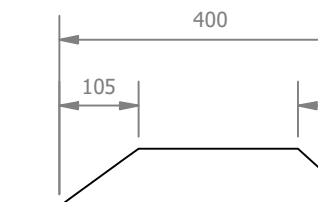
TR5 (1:15)



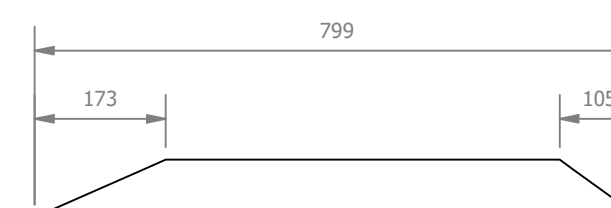
TR5 (1:15)



TQ3 (1:10)

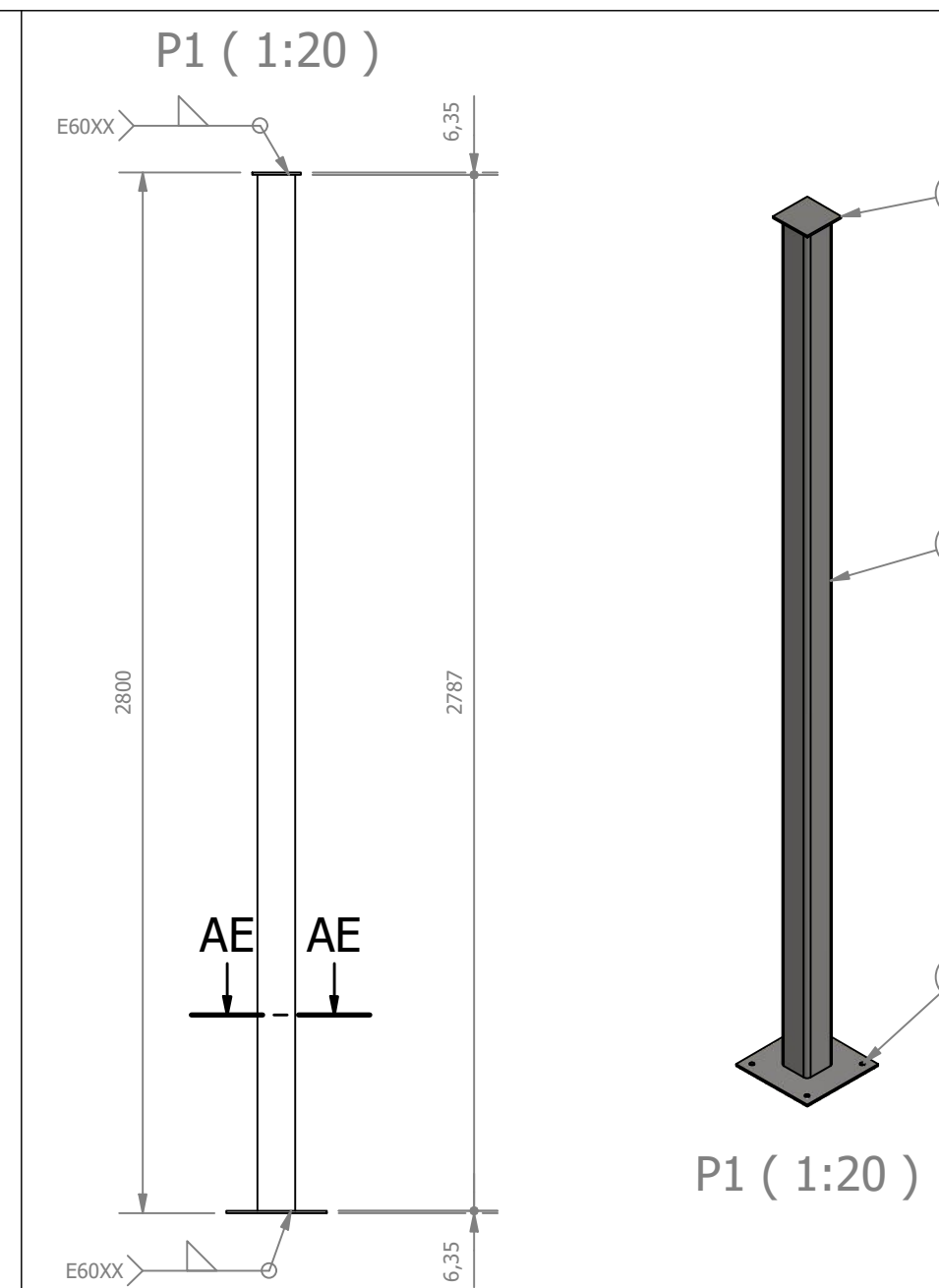


TQ1 (1:10)



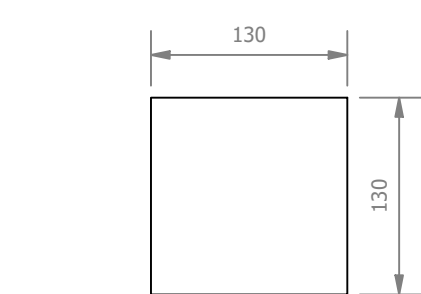
TQ2 (1:10)

ID	ITEM	QTD	DESCRIÇÃO	COMPRIM.	MATERIAL	PESO
2	TQ3	1	Tubo quadrado 3 x 3 x 1/4	1005	Aço ASTM A36	12,6 kg
3	TQ1	1	Tubo quadrado 3 x 3 x 1/4	400	Aço ASTM A36	4 kg
4	TQ2	1	Tubo quadrado 3 x 3 x 1/4	799	Aço ASTM A36	8,7 kg
5	Ch4	1	400 x 225 x 6,35		Aço ASTM A36	4,4 kg

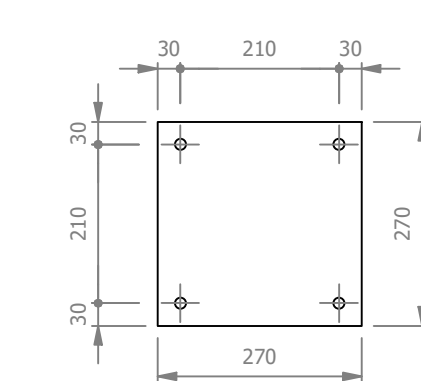


P1 (1:20)

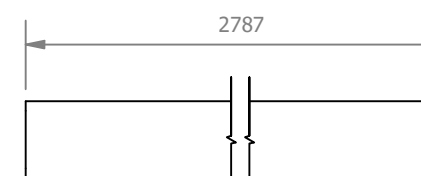
SEÇÃO AE-AE ESCALA 1:20



Ch3 (1:5)



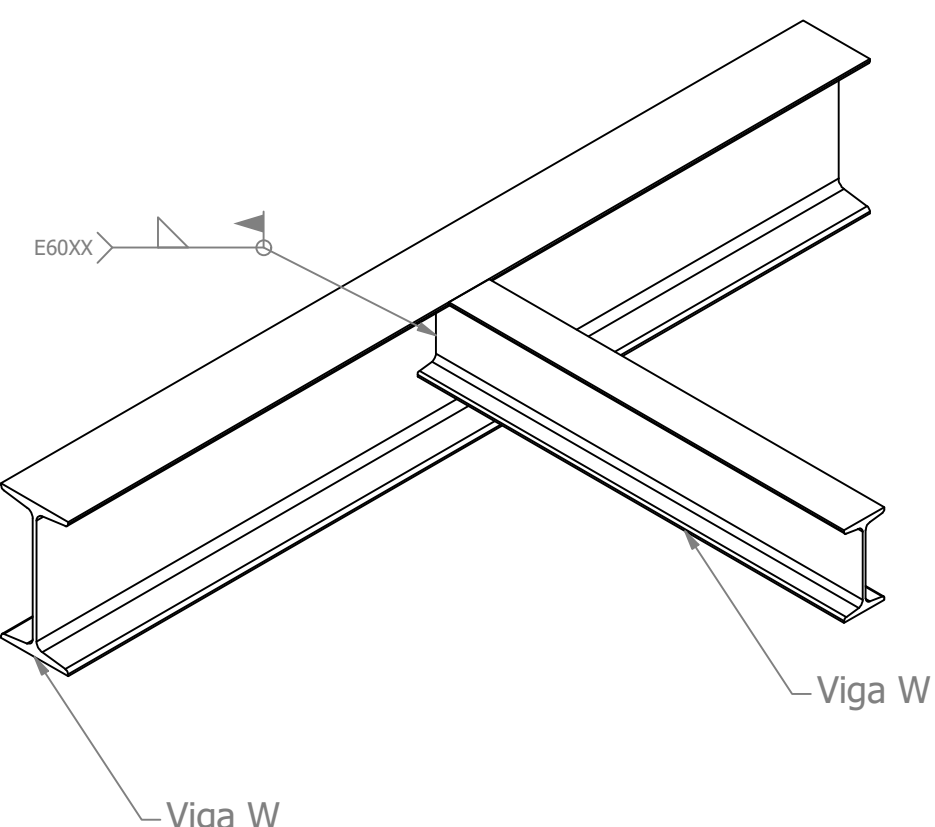
Ch1 (1:10)



TQ1 (1:10)

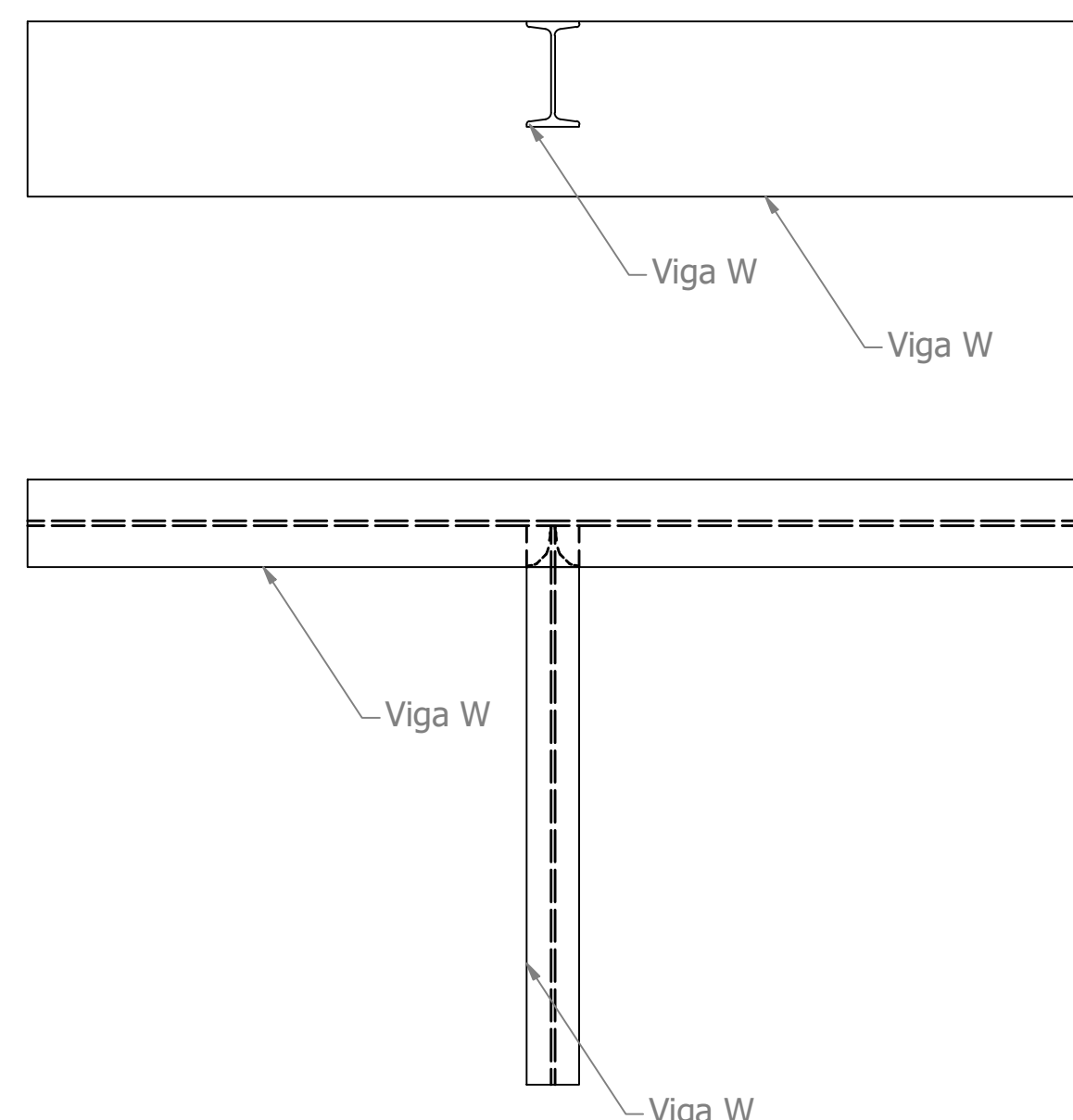
ID	ITEM	QTD	DESCRIÇÃO	COMPRIM.	MATERIAL	PESO
1	TQ1	1	Tubo quadrado 4 x 4 x 1/4	2787	Aço ASTM A36	50,7 kg
2	Ch1	1	270 x 270 x 6,35		Aço ASTM A36	3,6 kg
3	Ch3	1	130 x 130 x 6,35		Aço ASTM A36	0,8 kg

DETALHE - REFORÇO TIPO 1 (1:10)

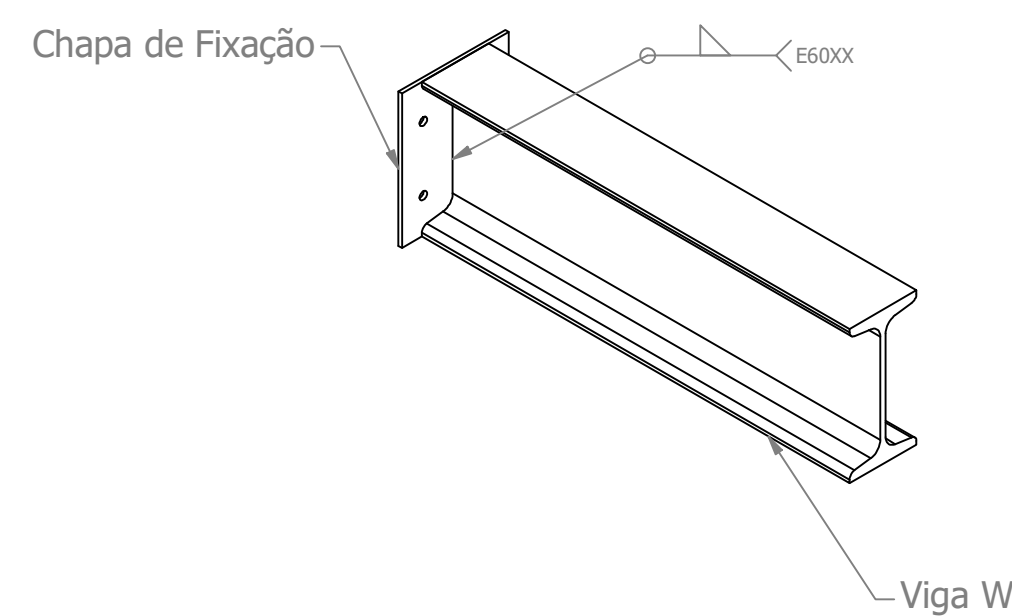


PESO DOS REFORÇOS ESTRUTURAIIS: 1137,23 kg

REFORÇO TIPO 1 (1:10)

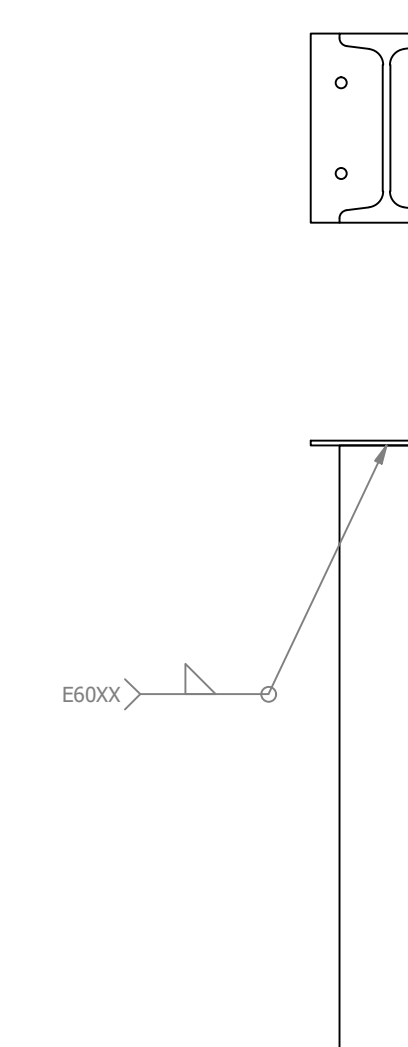




DETALHE - REFORÇO TIPO 2 (1:10)



Chapa de Fixação (1:10)

REFORÇO TIPO 2 (1:10)



REV. 00	30/05/22	EMISSÃO INICIAL	DAC
REVISÃO	DATA	DESCRIÇÃO	RESP.
 <p>Prefeitura Municipal de Pouso Alegre</p>			
 <p>DAC Engenharia</p>		<p>GERÊNCIA DE PROJETOS PEDRO HENRIQUE JUSTINIANO ENG. CIVIL</p> <p>COORDENAÇÃO DE PROJETOS ALOISIO CAETANO FERREIRA CREA MG-97.132D</p> <p>RESPONSÁVEL TÉCNICO ENG. CIVIL FLÁVIA C. BARBOSA CREA MG-187.842D</p> <p>ENG. CIVIL WILLIAM BARADEL LARI</p> <p>DESENHO ENG. MECÂNICO PEDRO COSTA</p>	
<p>EMPREENDIMENTO</p> <p>REFORMA E AMPLIAÇÃO DA UBS JARDIM BRASIL</p>			
<p>ENDEREÇO</p> <p>RUA JOSÉ EXPEDITO DE CARVALHO, 95 - B. JARDIM BRASIL POUSO ALEGRE - MINAS GERAIS</p>		<p>DISCIPLINA</p> <p>METÁLICA</p> <p>FASE DO PROJETO</p> <p>EXECUTIVO</p> <p>FOLHA Nº</p> <p>4</p>	
DATA INICIAL	ESCALA	REVISÃO	ARQUIVO
30/05/2022	INDICADA	R00	DAC-PMPA-UJB-PE-MET-R00.dwg