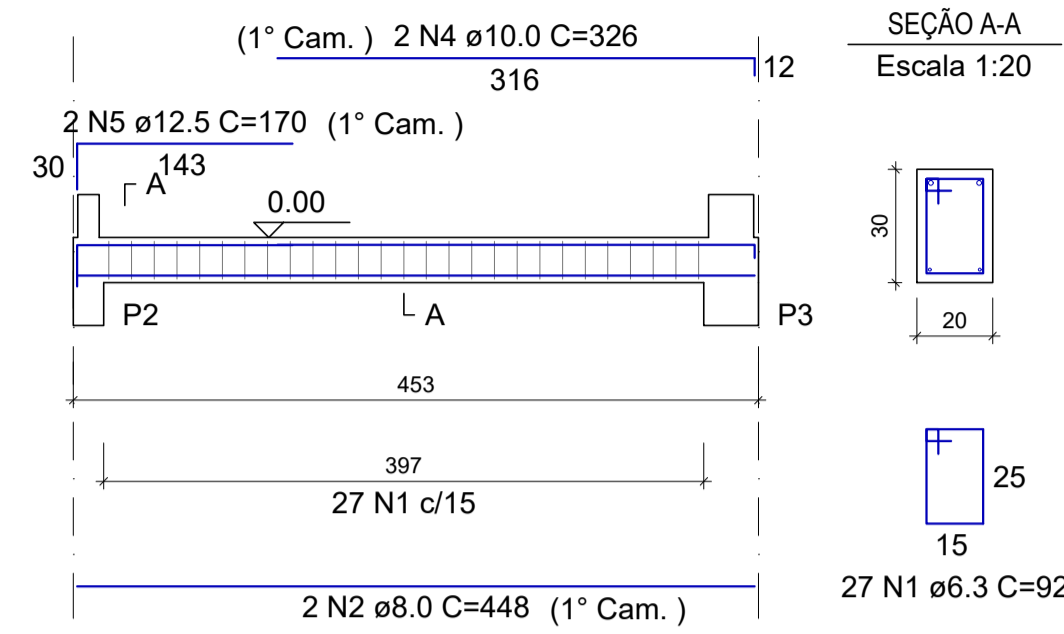
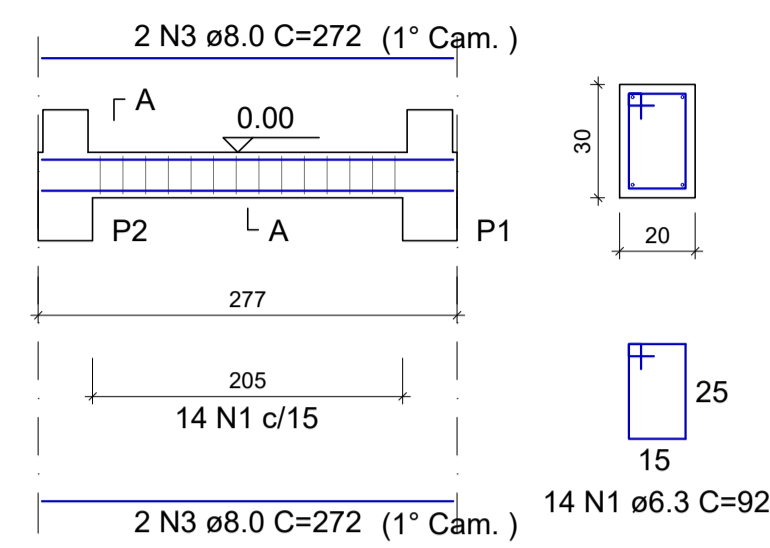


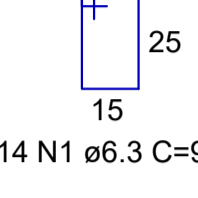
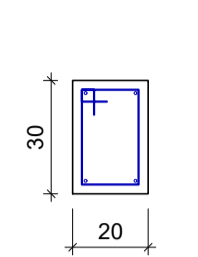
VB1  
Escala 1:50



VB2  
Escala 1:50



SEÇÃO A-A  
Escala 1:20



RELAÇÃO DO AÇO  
VB1 VB2

AÇO	N	DIAM (mm)	QUANT	C.UNIT (cm)	C.TOTAL (cm)
CA50	1	6.3	41	92	3772
	2	8.0	2	448	896
	3	8.0	4	272	1088
	4	10.0	2	326	652
	5	12.5	2	170	340

RESUMO DO AÇO

AÇO	DIAM (mm)	C.TOTAL (m)	QUANT + 10% (Barras)	PESO + 10% (kg)
CA50	6.3	37.7	4	10.2
	8.0	19.8	2	8.6
	10.0	6.5	1	4.4
	12.5	3.4	1	3.6

PESO TOTAL (kg)	
CA50	26.8

Volume de concreto (C-30) = 0.36 m³  
Área de forma = 5.84 m²

RELAÇÃO DO AÇO

V1 V2

AÇO	N	DIAM (mm)	QUANT	C.UNIT (cm)	C.TOTAL (cm)
CA50	1	6.3	42	80	3360
	2	6.3	1	99	99
	3	8.0	4	266	1064
	4	12.5	2	454	908
	5	12.5	2	481	962

RESUMO DO AÇO

AÇO	DIAM (mm)	C.TOTAL (m)	QUANT + 10% (Barras)	PESO + 10% (kg)
CA50	6.3	34.6	4	9.3
	8.0	10.6	1	4.6
	12.5	18.7	2	19.8

PESO TOTAL (kg)	
CA50	33.7

Volume de concreto (C-30) = 0.26 m³  
Área de forma = 5.31 m²

RELAÇÃO DO AÇO

V1 V2

AÇO	N	DIAM (mm)	QUANT	C.UNIT (cm)	C.TOTAL (cm)
CA50	1	6.3	130	60	7800
	2	8.0	2	442	884
	3	8.0	2	460	920
	4	8.0	2	274	548
	5	8.0	2	288	576

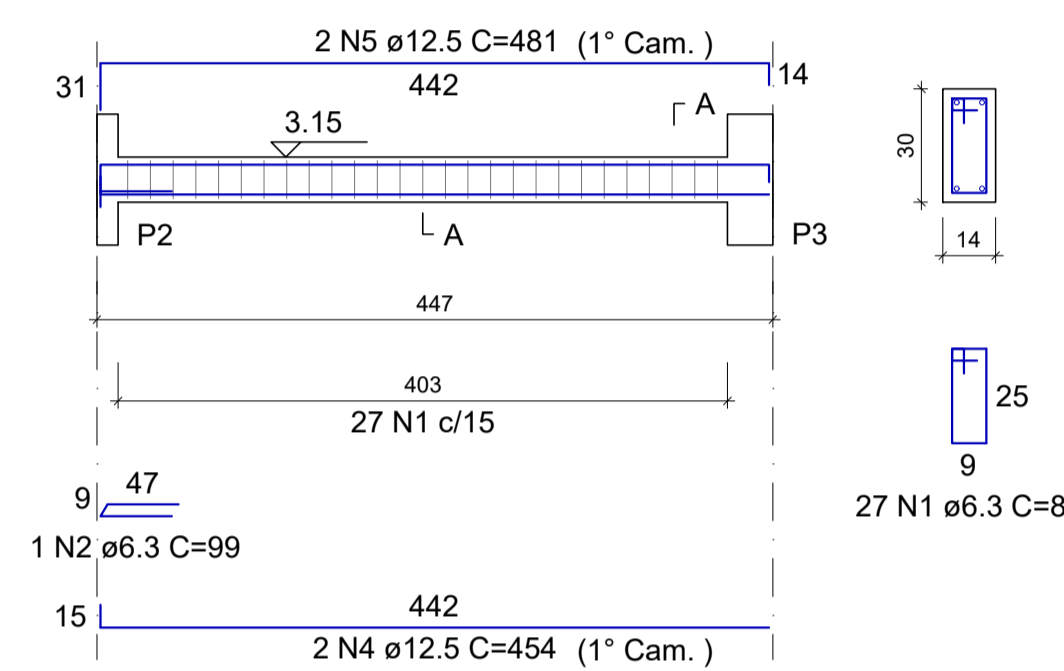
RESUMO DO AÇO

AÇO	DIAM (mm)	C.TOTAL (m)	QUANT + 10% (Barras)	PESO + 10% (kg)
CA50	6.3	78	8	21
	8.0	29.3	3	12.7

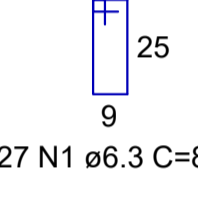
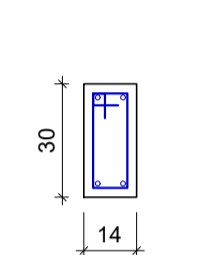
PESO TOTAL (kg)	
CA50	33.7

Volume de concreto (C-30) = 0.17 m³  
Área de forma = 3.88 m²

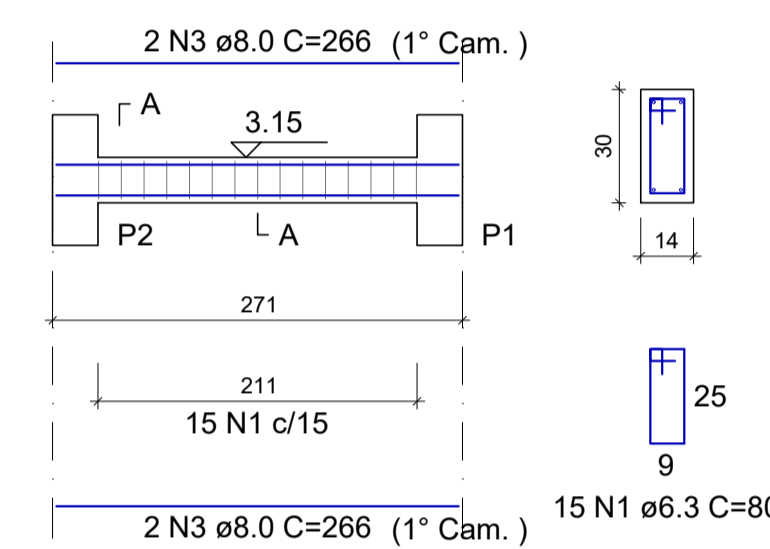
V1  
Escala 1:50



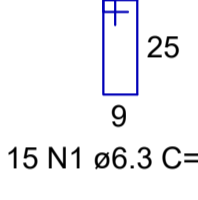
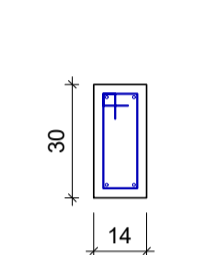
SEÇÃO A-A  
Escala 1:20



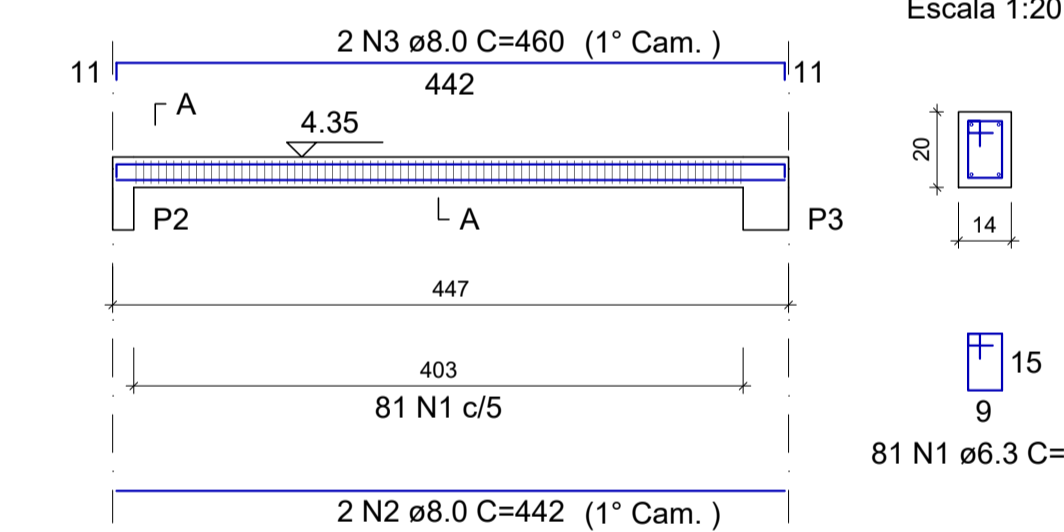
V2  
Escala 1:50



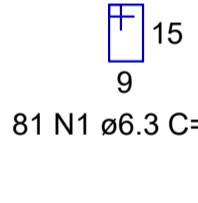
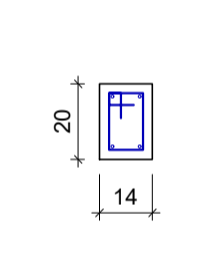
SEÇÃO A-A  
Escala 1:20



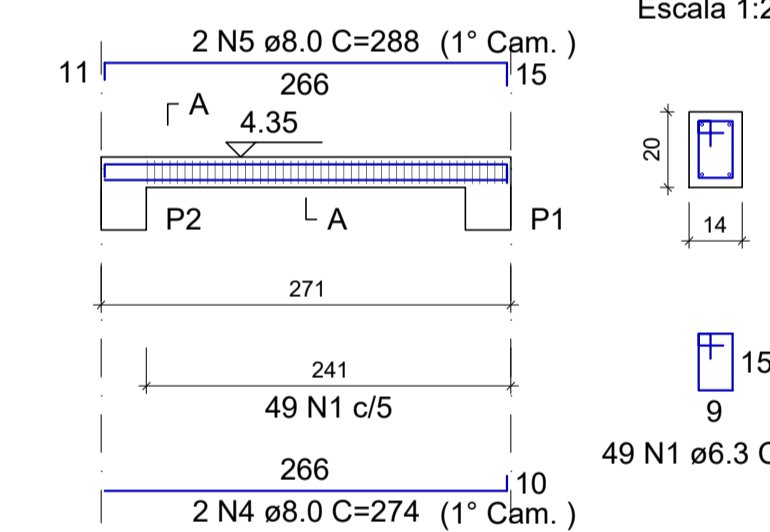
V1  
Escala 1:50



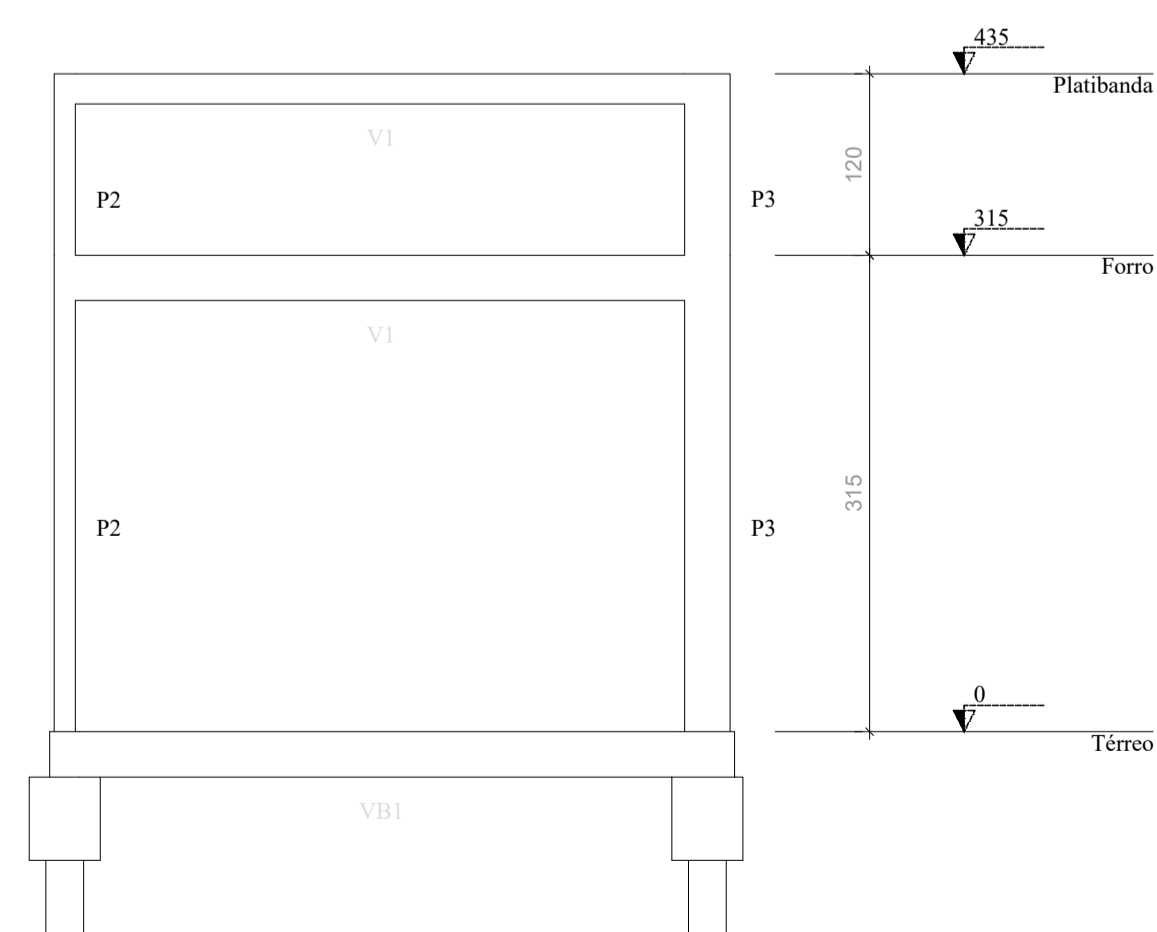
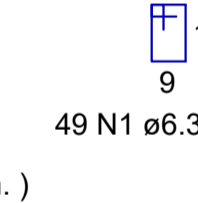
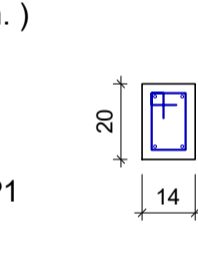
SEÇÃO A-A  
Escala 1:20



V2  
Escala 1:50



SEÇÃO A-A  
Escala 1:20



CORTE A-A  
Escala 1:50

REV. 00	30/05/22	EMISSÃO INICIAL	DAC
REVISÃO	DATA	DESCRIÇÃO	RESP.



 Rua Miguel Viana, nº 81, Sala 12 Bairro Morro Chic CEP: 37500-080 - Itajubá / MG Tel: (35) 3623-5720 www.dacengenharia.com.br	GERÊNCIA DE PROJETOS PEDRO HENRIQUE JUSTINIANO ENG. CIVIL
	COORDENAÇÃO DE PROJETOS ALOISIO CAETANO FERREIRA CREA: MG-97.132/D RESPONSÁVEL TÉCNICO ENGR. CIVIL FLÁVIA C. BARBOSA CREA: MG-187.842/D PROJETO ENGR. CIVIL WILLIAM BARADEL LARI DESENHO DAVI VELOSO ALVES

EMPREENDIMENTO	
REFORMA E AMPLIAÇÃO DA UBS JARDIM BRASIL	
ENDEREÇO	DISCIPLINA
RUA JOSÉ EXPEDITO DE CARVALHO, 95 - B. JARDIM BRASIL	ESTRUTURAL
POUSO ALEGRE - MINAS GERAIS	FASE DO PROJETO
ASSUNTO	EXECUTIVO
PLANTA DE LOCAÇÃO, PLANTAS DE FORMA	FOLHA Nº:
PLANTA BAIXA, DETALHAMENTOS	01/03

DATA INICIAL	ESCALA	REVISÃO	ARQUIVO
30/05/2022	INDICADA	R00	DAC-PMPA-UJB-PE-EST-R00.DWG