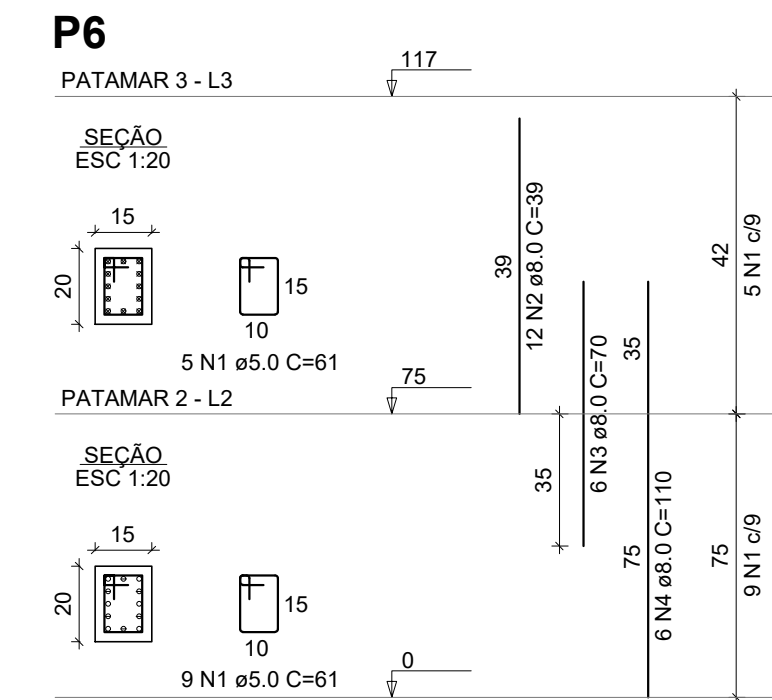
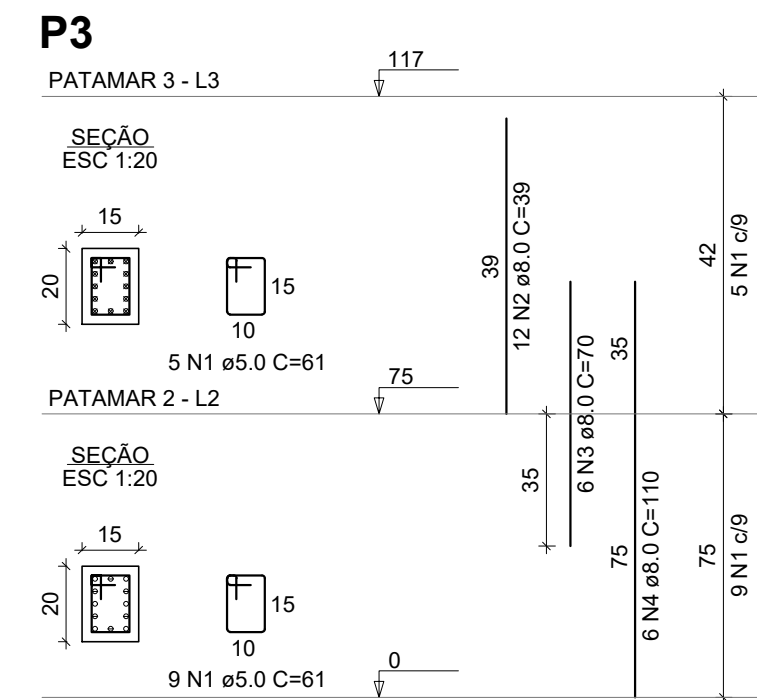
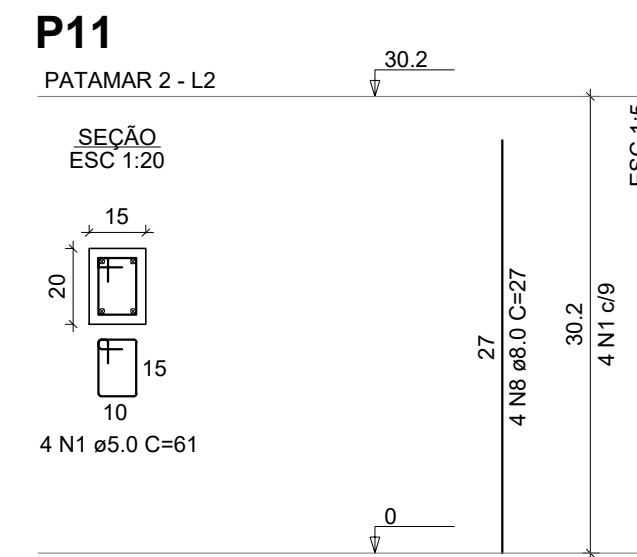
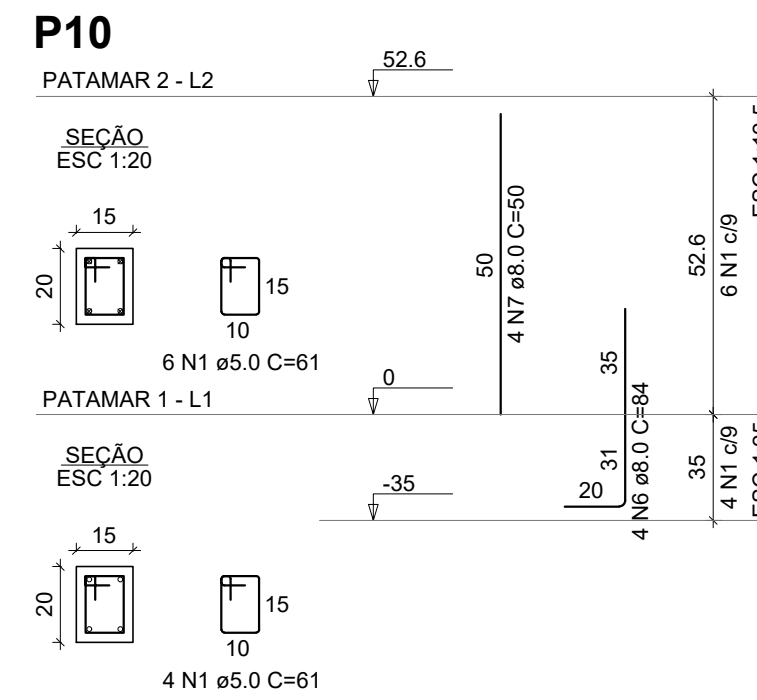
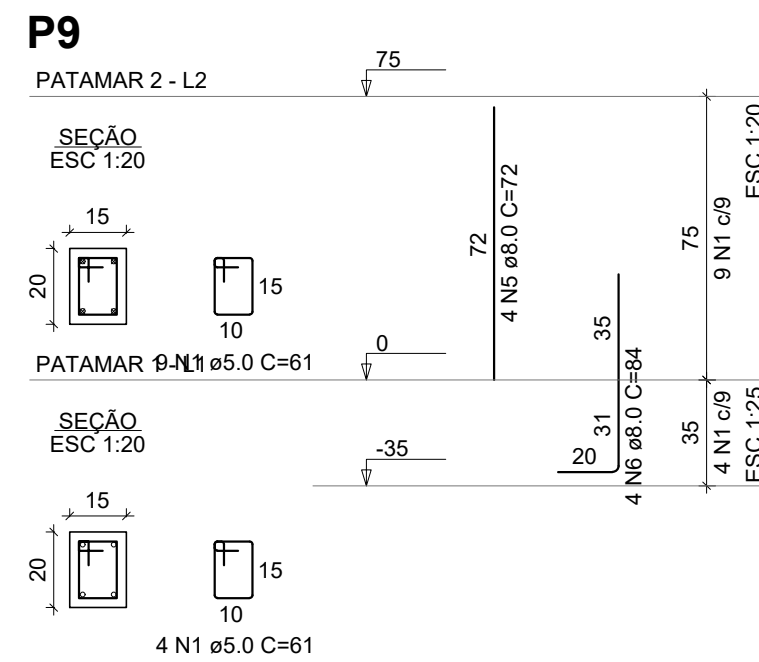
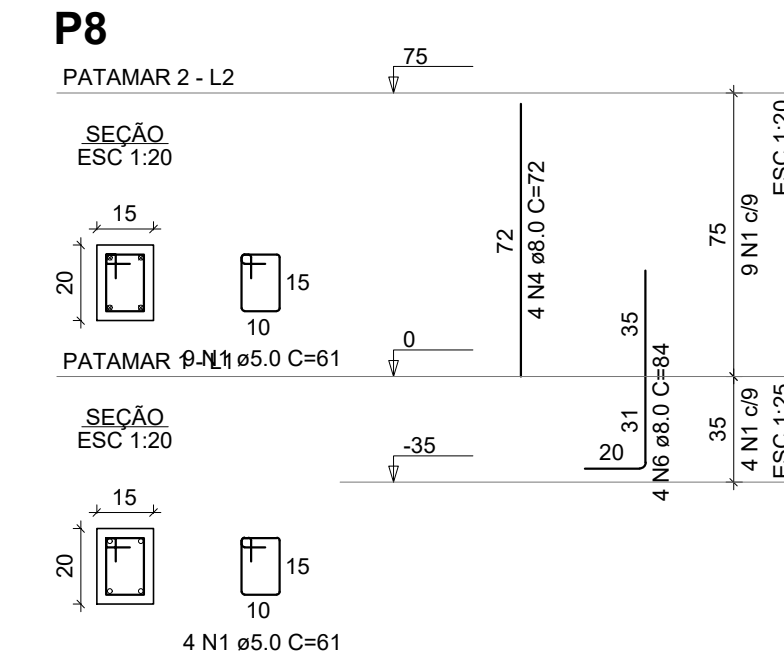
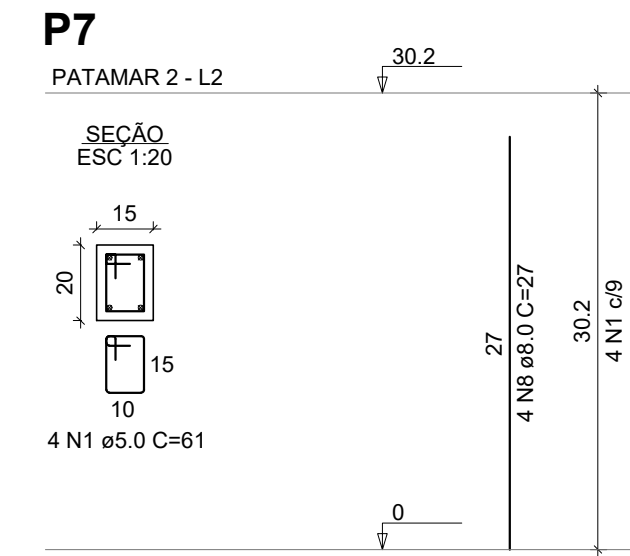
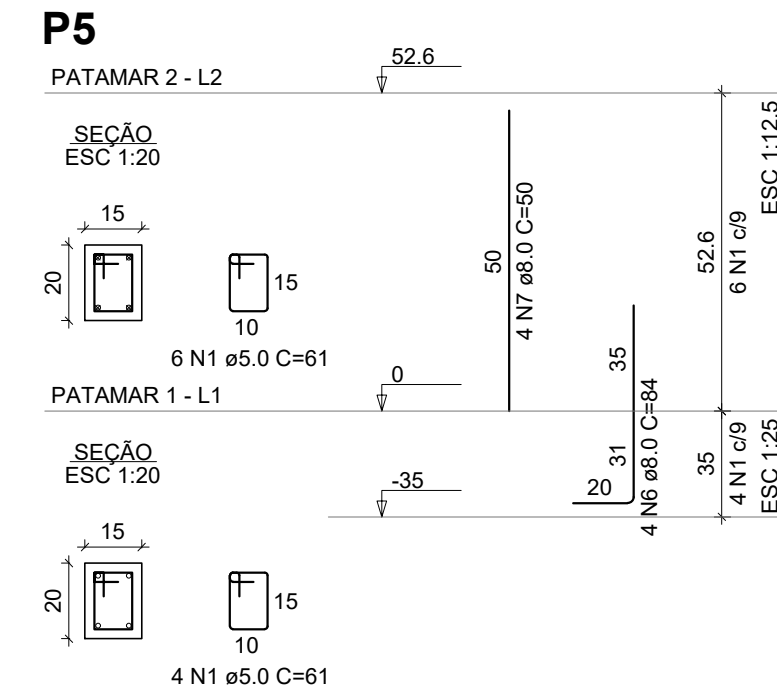
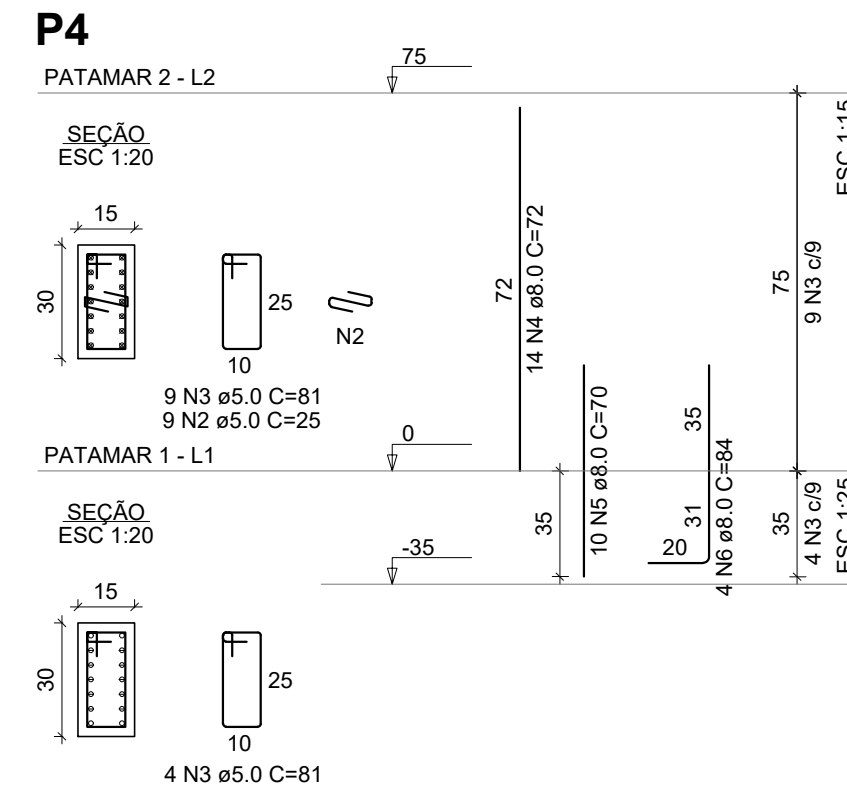
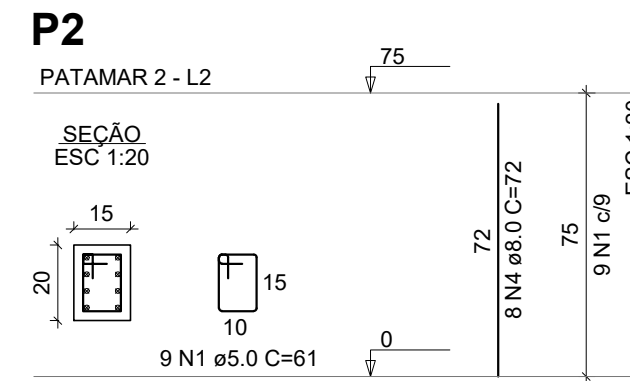
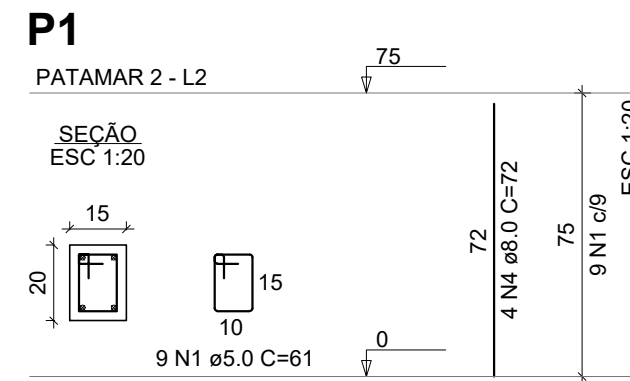


PROJETO ESTRUTURAL - REFORMA DA SUPERINTENDÊNCIA DE RECURSOS MATERIAIS
ESCALA INDICADA



DETALHAMENTO DOS PILARES
Esc Indicada

RELAÇÃO DO AÇO

AÇO	N	DIAM (mm)	QUANT	C.UNIT (cm)	C.TOTAL (cm)
CA60	1	5.0	55	61	3355
CA50	2	8.0	24	39	936
	3	8.0	12	70	840
	4	8.0	12	110	1320
	5	8.0	4	72	288
	6	8.0	8	84	672
	7	8.0	4	50	200
	8	8.0	4	27	108

RESUMO DO AÇO

AÇO	DIAM (mm)	C.TOTAL (m)	PESO + 10% (kg)
CA50	8.0	43.6	18.9
CA60	5.0	33.5	5.7
PESO TOTAL (kg)			
CA50			18.9
CA60			5.7

Volume de concreto (C-20) = 0.14 m³
Área de forma = 3.23 m²

RELAÇÃO DO AÇO

AÇO	N	DIAM (mm)	QUANT	C.UNIT (cm)	C.TOTAL (cm)
CA60	1	5.0	45	61	2745
	2	5.0	9	25	225
	3	5.0	13	81	1053
CA50	4	8.0	30	72	2160
	5	8.0	10	70	700
	6	8.0	12	84	1008
	7	8.0	4	50	200
	8	8.0	4	27	108

RESUMO DO AÇO

AÇO	DIAM (mm)	C.TOTAL (m)	PESO + 10% (kg)
CA50	8.0	41.8	18.1
CA60	5.0	40.2	6.8
PESO TOTAL (kg)			
CA50			18.1
CA60			6.8

Volume de concreto (C-20) = 0.16 m³
Área de forma = 3.63 m²

REV. 01 24/11/2021 ALTERAÇÕES CONFORME SOLICITAÇÃO DA SUPERINTENDÊNCIA DAC	
REV. 00 20/10/2021 EMISSÃO INICIAL DAC	
REVISÃO	DATA : DESCRIÇÃO : RESP. :
	
PROJETO  Rua Miguel Vianna, nº 81, Sala 12 Bairro Moura Chic CEP: 37500-080 - Itajubá / MG Tel: (35) 3623-5720 www.dacengenharia.com.br	GERÊNCIA DE PROJETOS PEDRO HENRIQUE JUSTINIANO ENG. CIVIL COORDENAÇÃO DE PROJETOS ALOISIO CAETANO FERREIRA CREA: MG-97.132/D RESPONSÁVEL TÉCNICO ENG. CIVIL FLÁVIA C. BARBOSA CREA: MG-187.842/D PROJETO ENG. CIVIL THAIS VIVIANE COIMBRA DESENHO ENG. CIVIL THAIS VIVIANE COIMBRA
REFORMA DA SUPERINTENDÊNCIA DE RECURSOS MATERIAIS	
ENDEREÇO RUA LUCY VAS. TEIXEIRA, 230 - B. MIRANTE DO PARAÍSO POUSO ALEGRE - MINAS GERAIS	DISCIPLINA ESTRUTURAL FASE DO PROJETO EXECUTIVO FOLHA Nº: 05/06
ASSUNTO DETALHAMENTO DOS PILARES	DATA INICIAL ESCALA REVISÃO ARQUIVO 20/10/2021 INDICADA R01 DAC-PMPA-SRM-EST-PE-R01.DWG