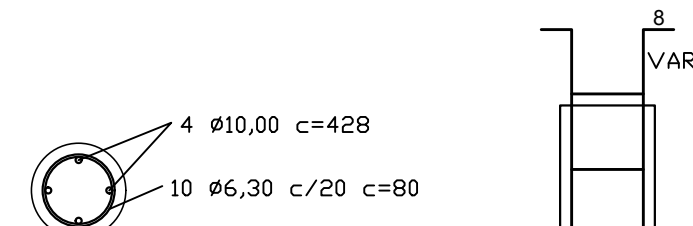


REGIÃO DE DIVISA

Detalhamento das Estacas C25 Esc. 1:25

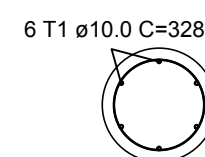


PROFUNDIDADE = 6.00 M  
PROFUNDIDADE AÇO = 2.00 M

RESUMO DO AÇO - ESTACAS C25

Aço	Bitola	Comprimento Total	Peso (Kg)	Peso + 10% (Kg)
CA60	Ø 6,30 mm	138,47	33,93	37,32
CA50	Ø 10,00 mm	191,52	118,17	129,98
Volume de Concreto		6,18	m³	

Detalhamento das Estacas C30 Esc. 1:25



ESTACA ESCAVADA  
COMPRIMENTO = 6.00 METROS  
ARMAR ATÉ 3.00 METROS

RESUMO DO AÇO - ESTACAS C30

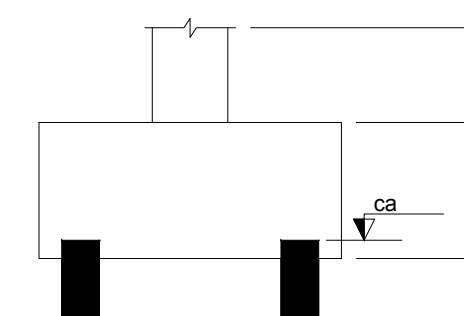
Aço	Bitola	Comprimento Total	Peso (Kg)	Peso + 10% (Kg)
CA60	Ø 6,30 mm	75,36	18,46	20,31
CA50	Ø 10,00 mm	101,40	62,56	68,82
Volume de Concreto		2,12	m³	

Nome	Fundação			Bloco		
	Lado B (cm)	Lado H (cm)	h0 / ha (m)	h1 / hb (m)	Estaca	ca (m)
B1	65	65	0.00	0.50	1	C25 -0.75
B2	65	65	0.00	0.50	1	C25 -0.75
B3	65	65	0.00	0.50	1	C25 -0.75
B4	65	65	0.00	0.50	1	C25 -0.75
B5	65	65	0.00	0.50	1	C25 -0.75
B6	65	65	0.20	0.50	1	C25 -0.95
B8	65	65	0.00	0.50	1	C25 -0.75
B9	65	65	0.00	0.50	1	C25 -0.75
B10	65	65	0.00	0.50	1	C25 -0.75
B11	65	65	0.20	0.50	1	C25 -0.95
B13	65	65	0.00	0.50	1	C25 -0.75
B14	65	65	0.00	0.50	1	C25 -0.75
B15	65	65	0.00	0.50	1	C25 -0.75
B16	65	65	0.00	0.50	1	C25 -0.75
B17	70	70	0.20	0.55	1	C30 -1.00
B19	65	65	0.00	0.50	1	C25 -0.75
B20	65	65	0.00	0.50	1	C25 -0.75
B22	65	65	0.00	0.50	1	C25 -0.75
B23	65	65	0.00	0.50	1	C25 -0.75
B24	65	65	0.00	0.50	1	C25 -0.75
B25	65	65	0.00	0.50	1	C25 -0.75
B26	65	65	0.20	0.50	1	C25 -0.95
BT1	70	70	0.20	0.55	1	C30 -1.00
BT2	70	70	0.20	0.55	1	C30 -1.00
BT3	70	70	0.20	0.55	1	C30 -1.00
BT4	70	70	0.20	0.55	1	C30 -1.00

LOCAÇÃO DAS ESTACAS

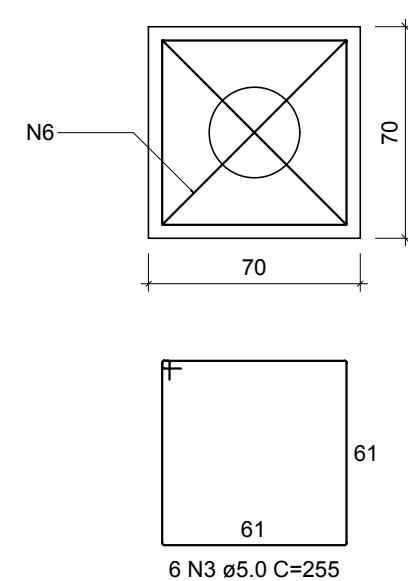
Bloco	Nome	Tipo	Coordenada X (cm)	Coordenada Y (cm)	Carga máx. (kN)	CA (cm)
B1	E1-1	C25	157.5	-15.5	50.3	-0.75
B2	E2-1	C25	527.5	-15.5	49.1	-0.75
B3	E3-1	C25	157.5	-234.0	62.9	-0.75
B4	E4-1	C25	535.5	-242.5	73.5	-0.75
B5	E5-1	C25	822.5	-250.5	71.9	-0.75
B6	E6-1	C25	1117.5	-250.5	72.5	-0.95
B8	E8-1	C25	412.5	-505.5	55.7	-0.75
B9	E9-1	C25	535.5	-577.5	39.2	-0.75
B10	E10-1	C25	822.5	-569.5	59.1	-0.75
B11	E11-1	C25	1117.5	-569.5	58.5	-0.95
B13	E13-1	C25	165.5	-662.5	106.5	-0.75
B14	E14-1	C25	412.5	-670.5	83.1	-0.75
B15	E15-1	C25	535.5	-737.5	53.5	-0.75
B16	E16-1	C25	850.0	-737.5	85.5	-0.75
B17	E17-1	C30	1171.0	-737.5	67.2	-1.00
B19	E19-1	C25	165.5	-977.5	88.8	-0.75
B20	E20-1	C25	404.5	-977.5	136.9	-0.75
B22	E22-1	C25	157.5	-1319.5	51.9	-0.75
B23	E23-1	C25	404.5	-1327.5	63.5	-0.75
B24	E24-1	C25	527.5	-1377.5	50.1	-0.75
B25	E25-1	C25	850.0	-1377.5	88.7	-0.75
B26	E26-1	C25	1171.0	-1377.5	80.0	-0.95
BT1	E1-1	C30	1399.5	-242.5	63.4	-1.00
BT2	E2-1	C30	1399.5	-577.5	57.8	-1.00
BT3	E3-1	C30	1399.5	-737.5	114.5	-1.00
BT4	E4-1	C30	1399.5	-1392.5	82.4	-1.00

Simbologia	Nome	d (cm)	Quantidade
	C25	25.00	21
	C30	30.00	5

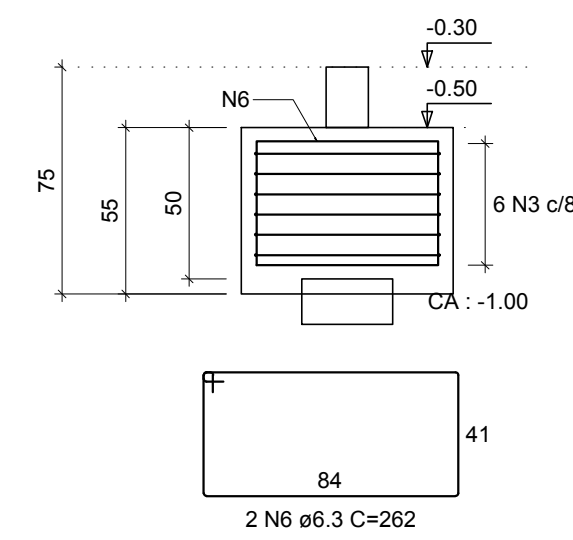


Locação das Estacas escala 1:50

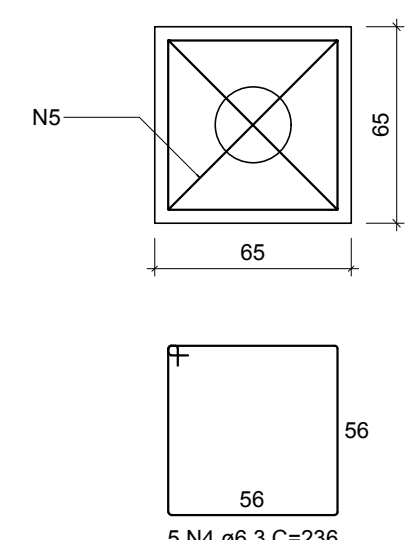
B17=BT1=BT2=BT3=BT4  
1xC30  
PLANTA  
ESC 1:25



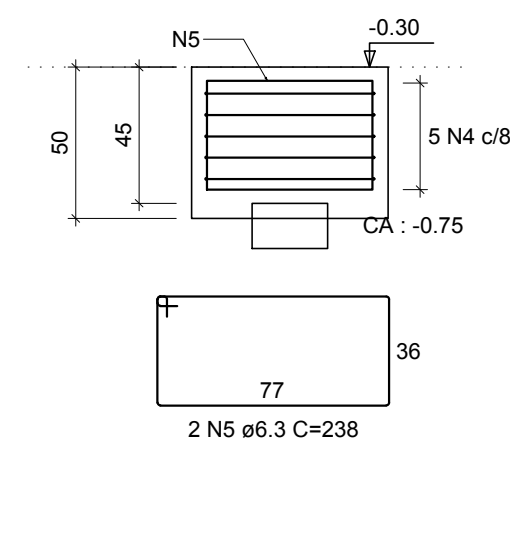
CORTE ESC 1:25



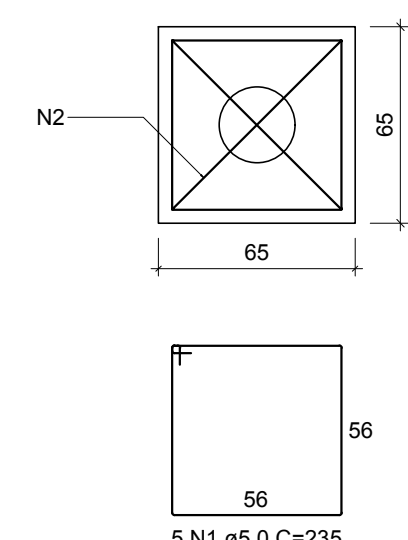
B1=B2=B3=B4=B5=B8=B9=B10=B13=B14=B15  
=B16=B19=B20=B22=B23=B24=B25  
1xC25  
PLANTA  
ESC 1:25



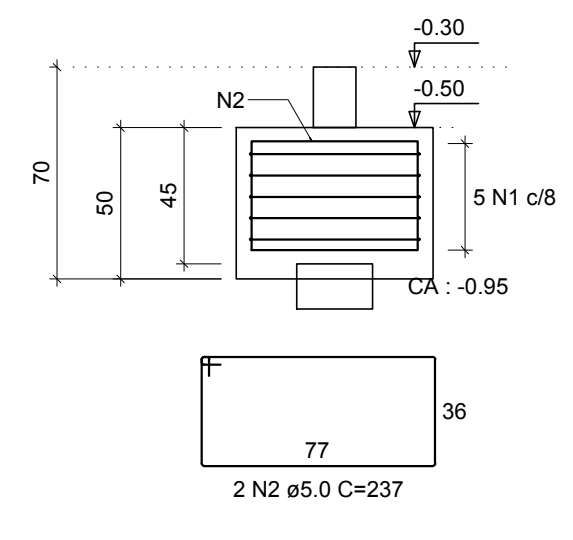
CORTE ESC 1:25



B6=B11=B26  
1xC25  
PLANTA  
ESC 1:25



CORTE ESC 1:25



RELAÇÃO DO AÇO

AÇO	N	DIAM (mm)	QUANT	C.UNIT (cm)	C.TOTAL (cm)
CA60	1	5.0	15	235	3525
CA60	2	5.0	6	237	1422
CA60	3	5.0	30	255	7650
CA50	4	6.3	90	236	21240
CA50	5	6.3	36	238	8568
CA50	6	6.3	10	262	2620

RESUMO DO AÇO

AÇO	DIAM (mm)	C.TOTAL (m)	QUANT + 10% (Barras)	UNIT	PESO + 10% (kg)
CA50	6.3	324.3	30	12 m	87.3
CA60	5.0	126	-	rolo (170 kg)	21.4

PESO TOTAL (kg)  
CA50 87.3  
CA60 21.4  
Volume de concreto (C-25) = 5.71 m³  
Área de forma = 35.00 m²

REV. 00	24/01/20	EMISSÃO INICIAL	DAC
REVISÃO:	DATA :	DESCRIÇÃO:	RESP.:



PROJETO	GERÊNCIA DE PROJETOS	DENIS DE SOUZA SILVA	CREA: MG-127.216/D
COORDENAÇÃO DE PROJETOS	ALOSIO CAETANO FERREIRA	CREA: MG-97.132/D	
RESPONSÁVEL TÉCNICO	ENGR. CIVIL FLÁVIA C. BARBOSA	CREA: MG-187.842/D	
PROJETO	WILLIAM BARADEL LARI		
DESENHO	WILLIAM BARADEL LARI		

EMPRESAMENTO		DISCIPLINA
IMPLANTAÇÃO DO SISTEMA DE ATENDIMENTO MÓVEL DE URGÊNCIA		ARQUITETÔNICO
ENDEREÇO		FASE DO PROJETO
RUA ANTÔNIO KREPP FILHO, BAIRRO CENTRO		EXECUTIVO
POUSO ALEGRE - MINAS GERAIS		FOLHA Nº
ASSUNTO		01/09
PROJETO ESTRUTURAL		
PLANTA DE LOCAÇÃO DAS ESTACAS		