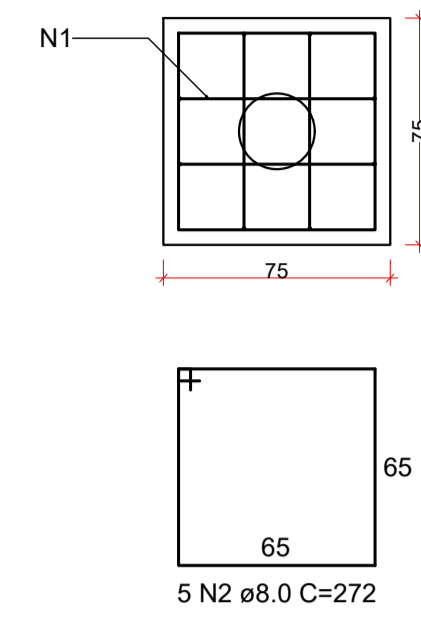


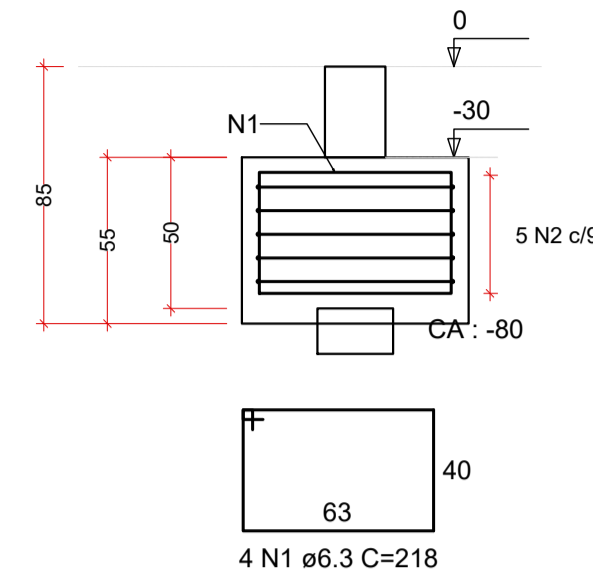
PROJETO ESTRUTURAL EM CONCRETO ARMADO
ESCALA INDICADA

B1=B2=B3=B4=B5=B6
1xC25

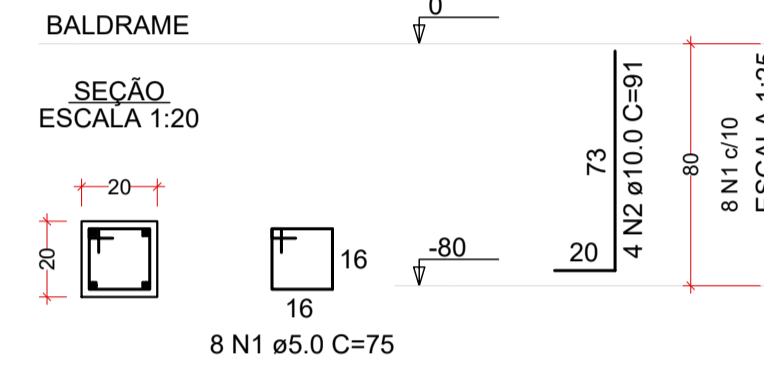
PLANTA
ESCALA 1:25



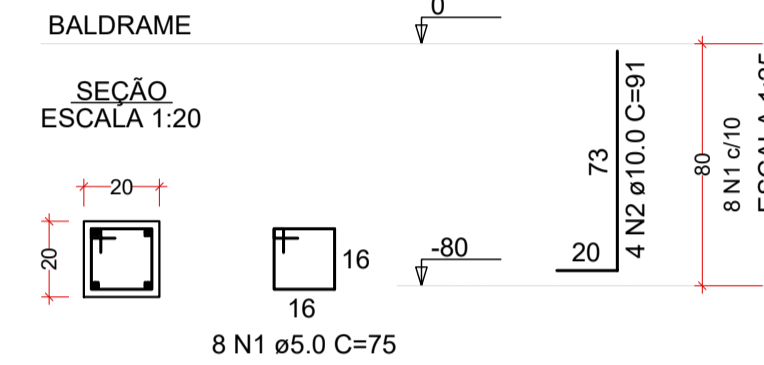
CORTE
ESCALA 1:25



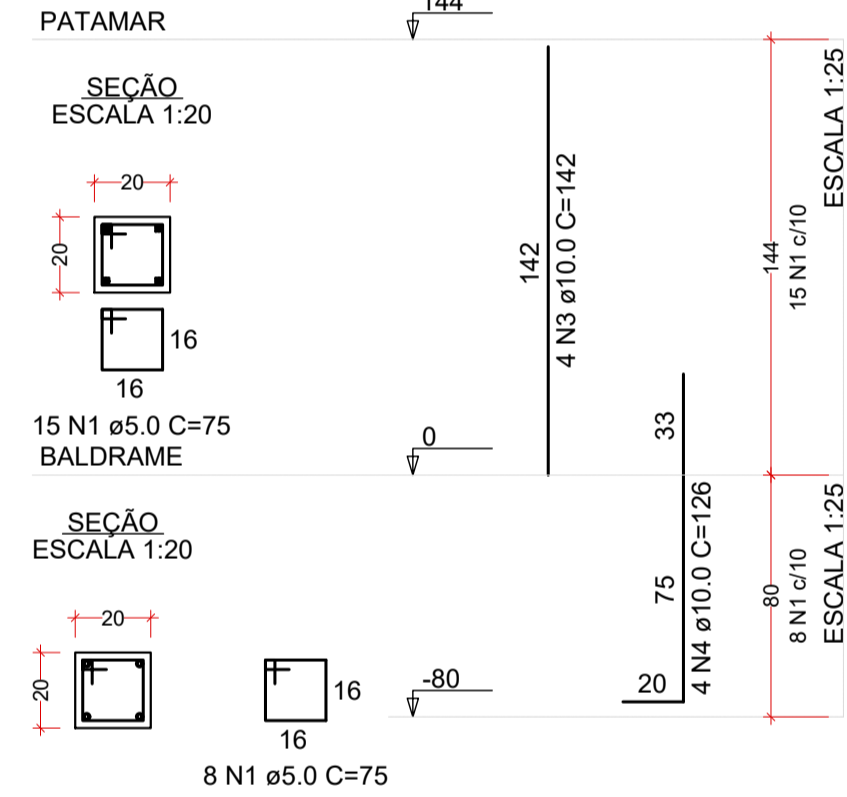
P1



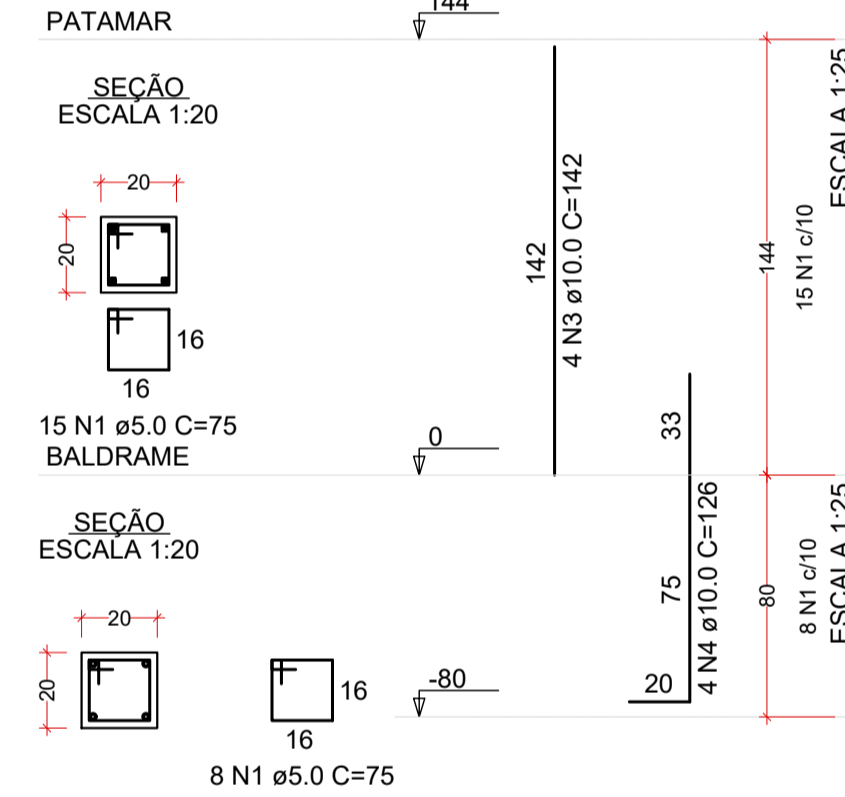
P4



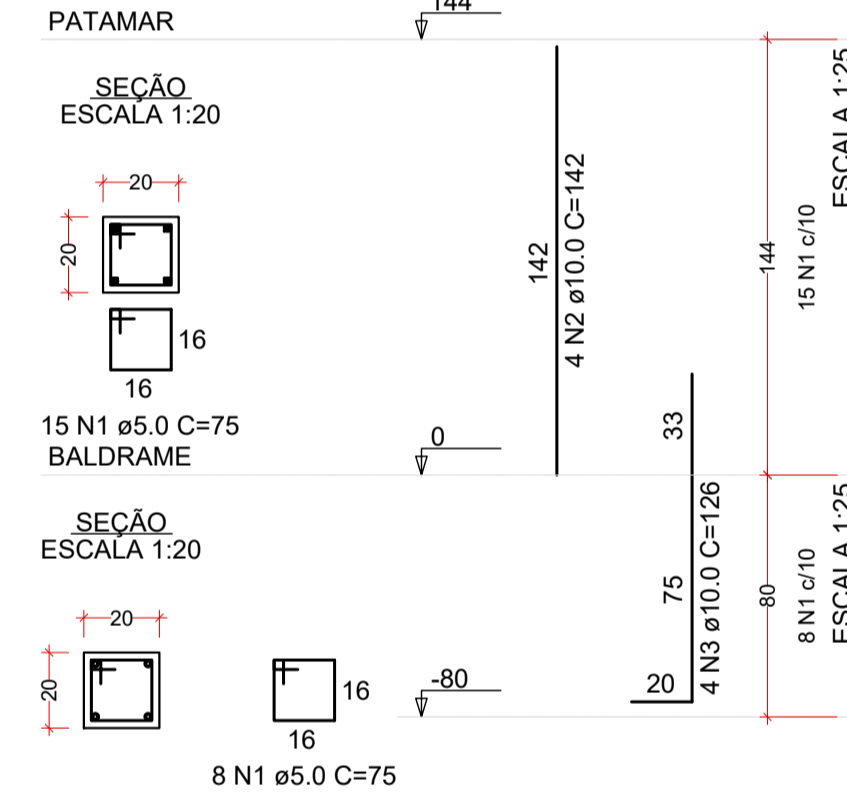
P2



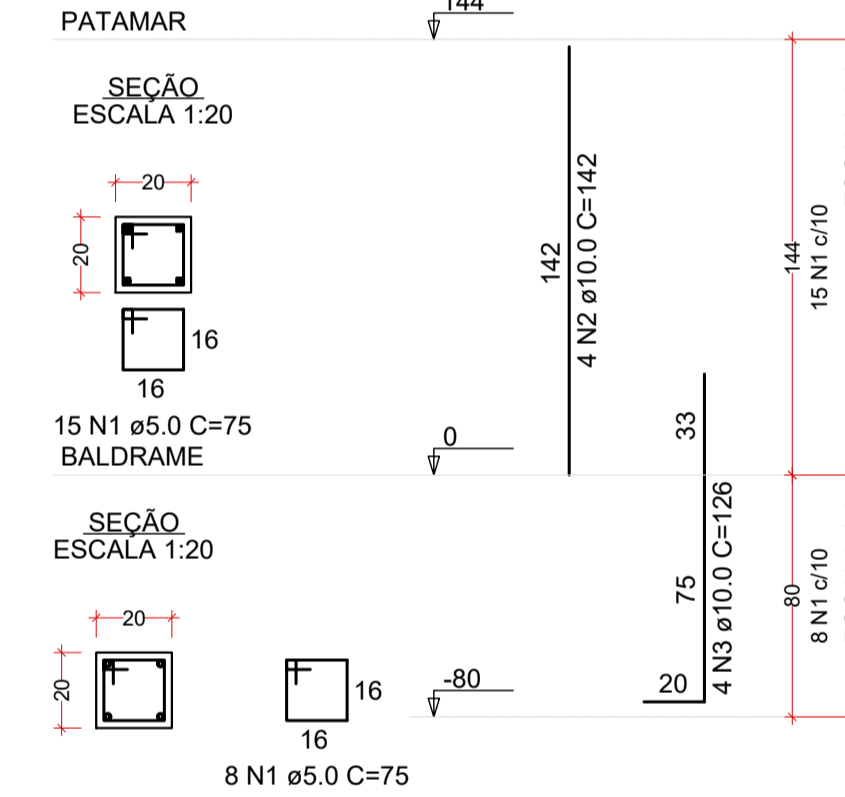
P3



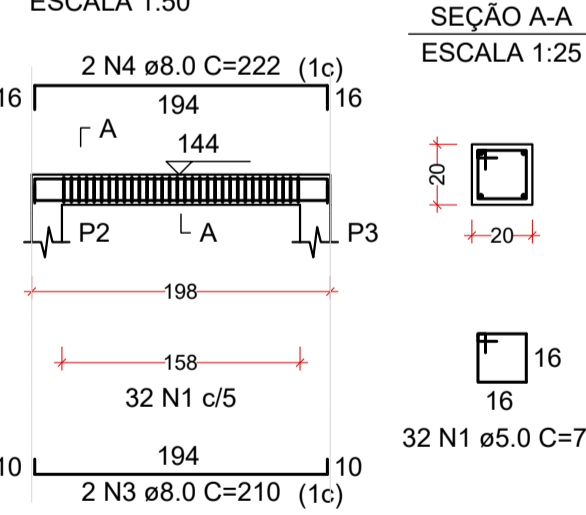
P5



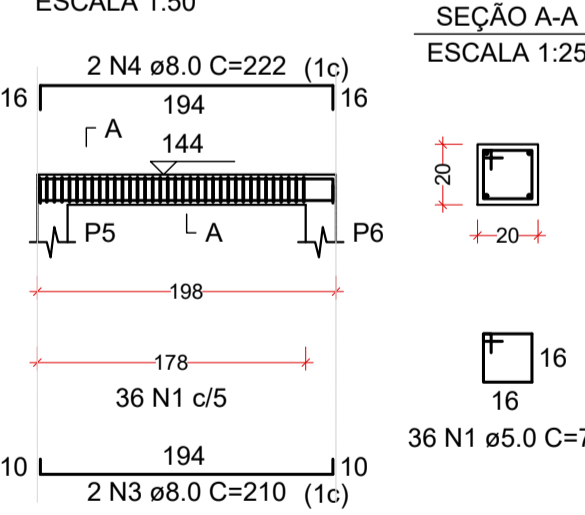
P6



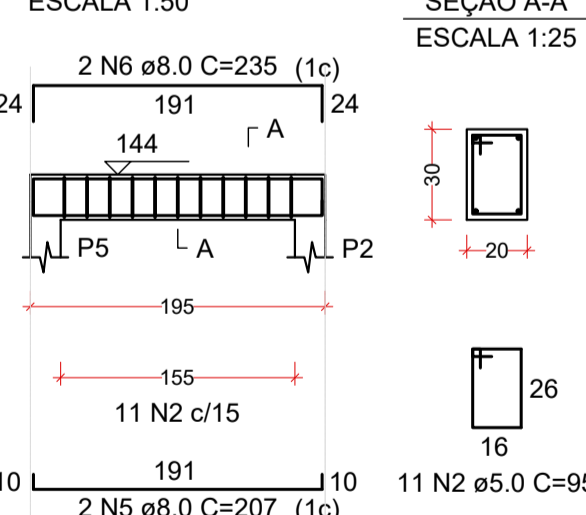
VP1



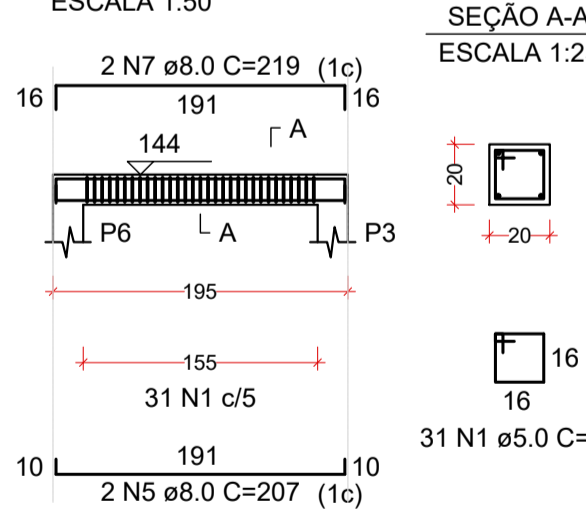
VP2



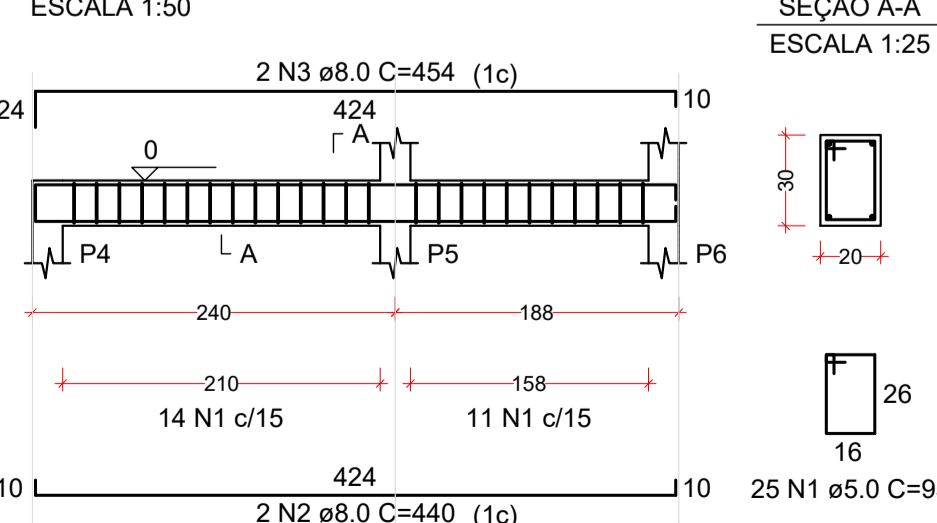
VP3



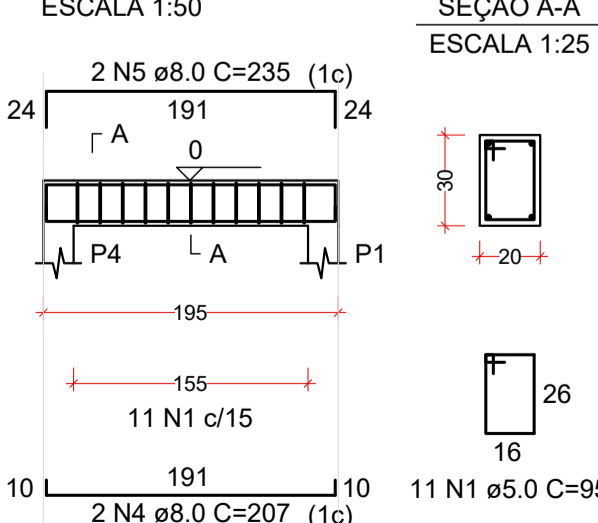
VP4



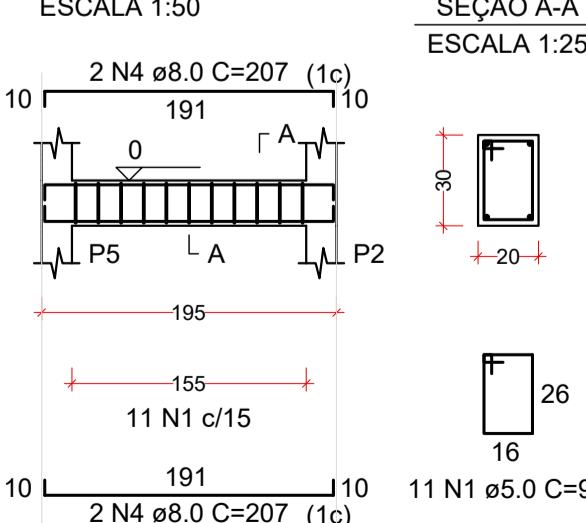
VB1



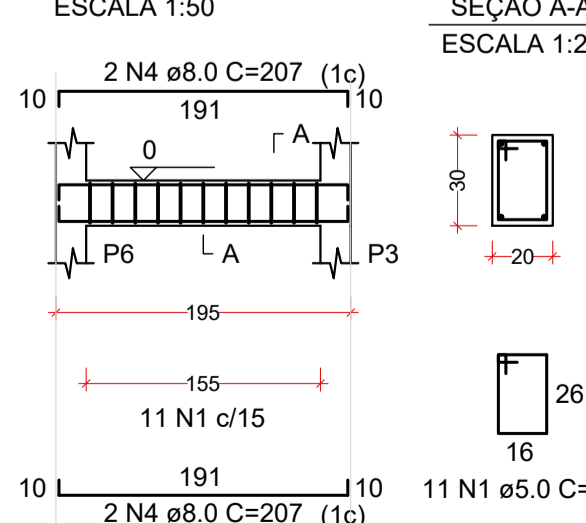
VB2



VB3



VB4



RELAÇÃO DO AÇO

AÇO	N	DIAM (mm)	QUANT	C.UNIT (cm)	C.TOTAL (cm)
CA50	1	6.3	24	218	5232
	2	8.0	30	272	8160

RESUMO DO AÇO

AÇO	DIAM (mm)	C.TOTAL (m)	PESO + 10% (kg)
CA50	6.3	52.3	14.1
CA50	8.0	81.6	35.4
PESO TOTAL (kg)			49.5

Volume de concreto (C-30) = 1.84 m³
Área de forma = 9.90 m²

RELAÇÃO DO AÇO

AÇO	N	DIAM (mm)	QUANT	C.UNIT (cm)	C.TOTAL (cm)
CA60	1	5.0	108	75	8100
CA50	2	10.0	8	91	728
CA50	3	10.0	16	142	2272
CA50	4	10.0	16	126	2016

RESUMO DO AÇO

AÇO	DIAM (mm)	C.TOTAL (m)	PESO + 10% (kg)
CA50	10.0	50.1	34.0
CA60	5.0	81.0	13.7
PESO TOTAL (kg)			47.7

Volume de concreto (C-30) = 0.30 m³
Área de forma = 6.04 m²

RELAÇÃO DO AÇO

AÇO	N	DIAM (mm)	QUANT	C.UNIT (cm)	C.TOTAL (cm)
CA60	1	5.0	99	75	7425
CA50	2	5.0	11	95	1045
	3	8.0	4	210	840
	4	8.0	4	222	888
	5	8.0	4	207	828
	6	8.0	2	235	470
	7	8.0	2	219	438

RESUMO DO AÇO

AÇO	DIAM (mm)	C.TOTAL (m)	PESO + 10% (kg)
CA50	8.0	34.6	15
CA60	5.0	84.7	14.4
PESO TOTAL (kg)			29.4

Volume de concreto (C-30) = 0.28 m³
Área de forma = 2.89 m²

RELAÇÃO DO AÇO

AÇO	N	DIAM (mm)	QUANT	C.UNIT (cm)	C.TOTAL (cm)
CA60	1	5.0	58	95	5510
CA50	2	8.0	2	440	880
CA50	3	8.0	2	454	908
CA50	4	8.0	10	207	2070
CA50	5	8.0	2	235	470

RESUMO DO AÇO

AÇO	DIAM (mm)	C.TOTAL (m)	PESO + 10% (kg)
CA50	8.0	43.3	18.8
CA60	5.0	55.1	9.3
PESO TOTAL (kg)			28.1

Volume de concreto (C-30) = 0.50 m³
Área de forma = 6.43 m²

REV. 00	09/12/2022	EMISSÃO INICIAL	DAC
REVISÃO	DATA	DESCRIÇÃO	RESP.
			
		COORDENAÇÃO ALOISIO CAETANO FERREIRA	
Rua Miguel Vianna, nº 51, 2º Andar Bairro Morro Chic CEP: 37500-080 - POUSO ALEGRE / MG Tel: (35) 3623-8846 www.dacengenharia.com.br		RESPONSÁVEL TÉCNICO E AUTOR ENG. CIVIL FLÁVIA BARBOSA CREA: MS-157.842D	
EMPREENDIMENTO REFORMA DO ESTÁDIO MUNICIPAL IRMÃO GINO MARIA ROSSI - FASE 1			
ENDEREÇO R. EDUARDO SOUZA GOLVEIA, 981 - BAIRRO JR. OLÍMPICO POUSO ALEGRE - MINAS GERAIS		DISCIPLINA ESTRUTURAL	
ASSUNTO PROJETO ESTRUTURAL EM CONCRETO ARMADO DETALHAMENTO DOS BLOCOS DE COROAMENTO, PILARES E VIGAS QUANTITATIVO POR ESCADA		FASE DO PROJETO EXECUTIVO	
DATA INICIAL 09/12/2022		ESCALA INDICADA	
REVISÃO R00		ARQUIVO DAC-PMPA-RMAN-FS1-PE-EST-R00.DWG	
		FOLHA Nº 02/04	