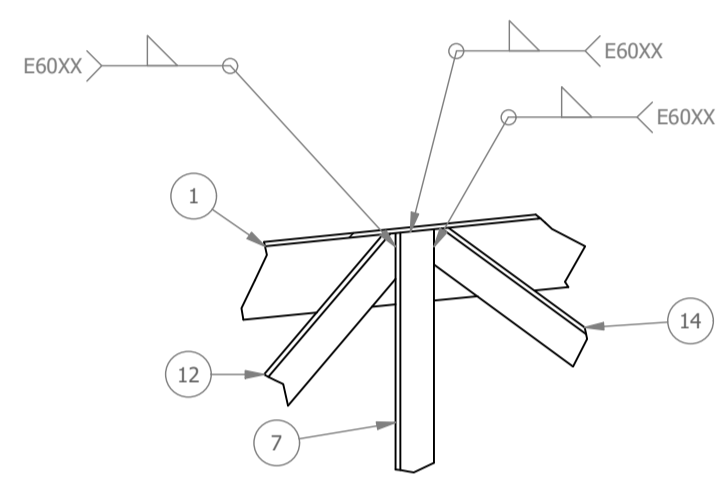
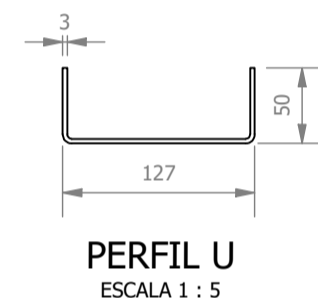
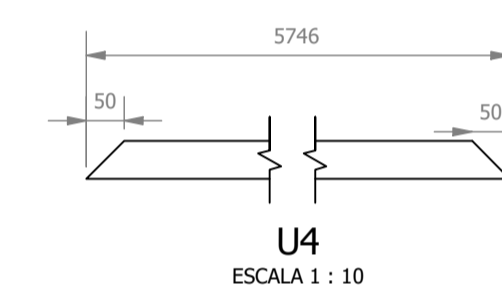
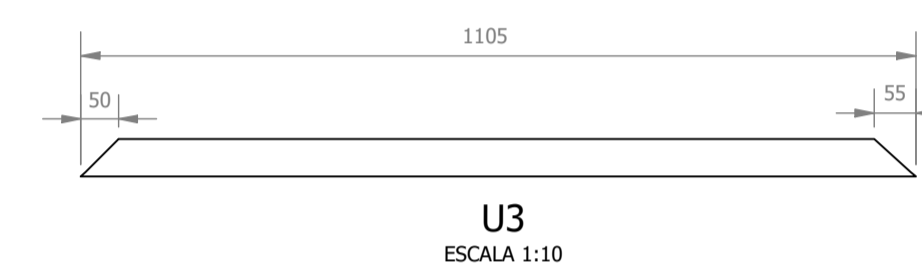
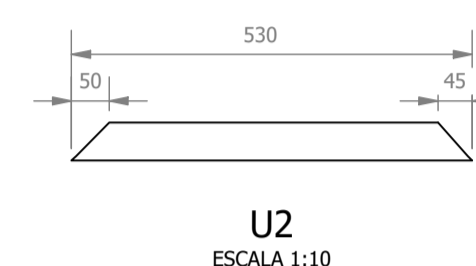
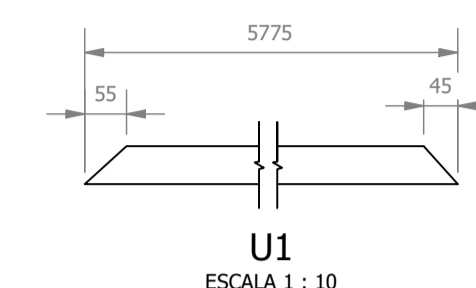
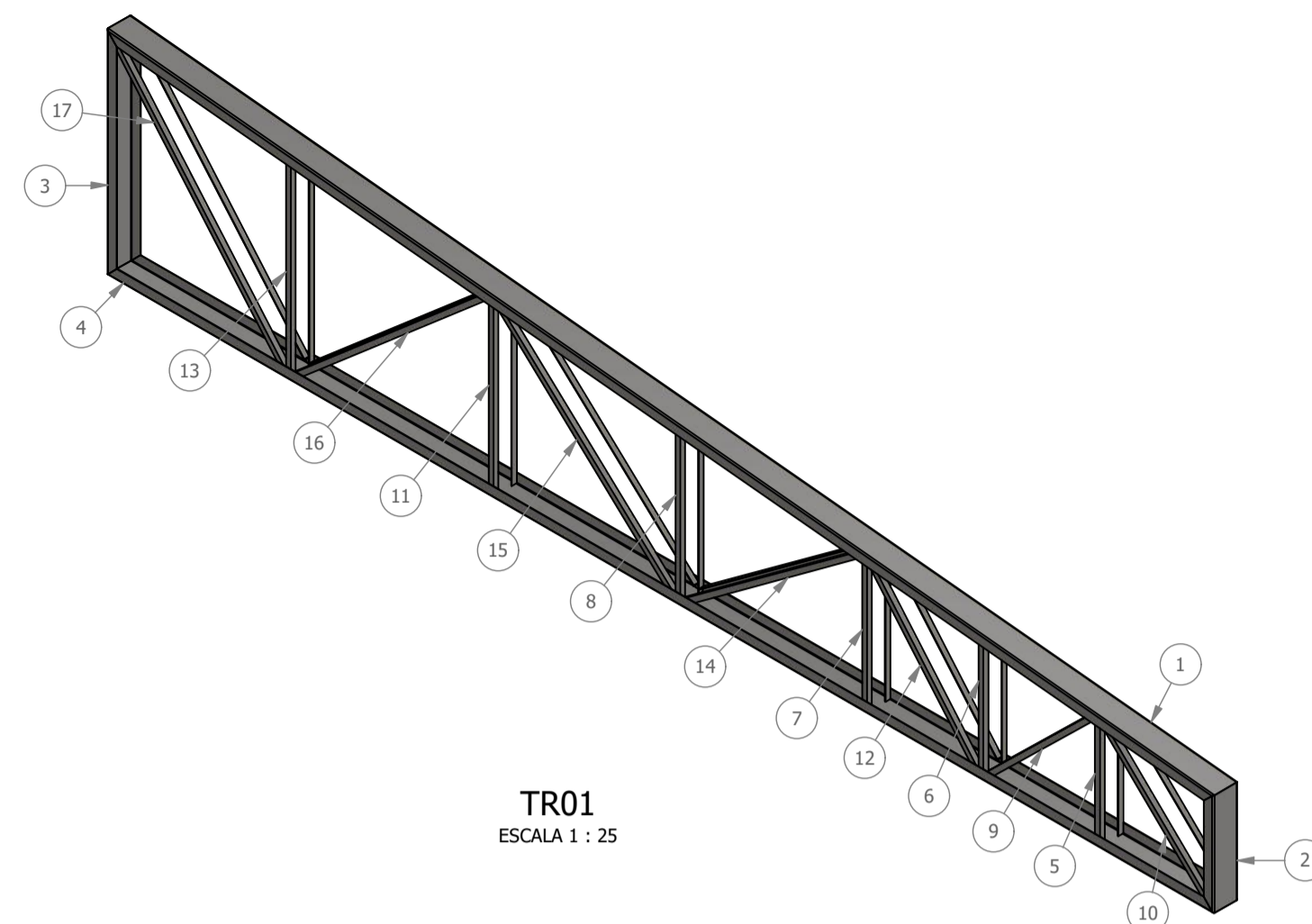
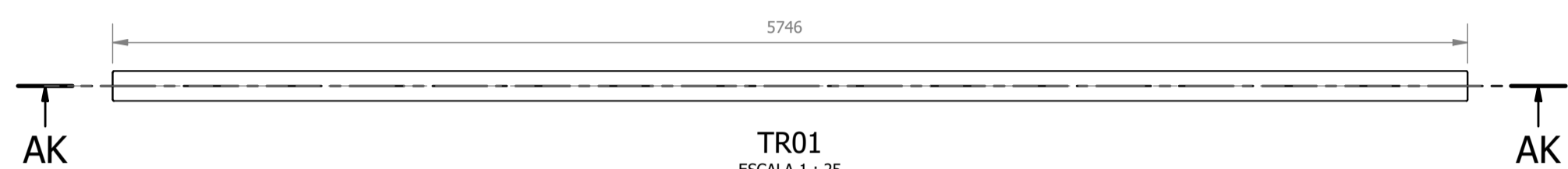
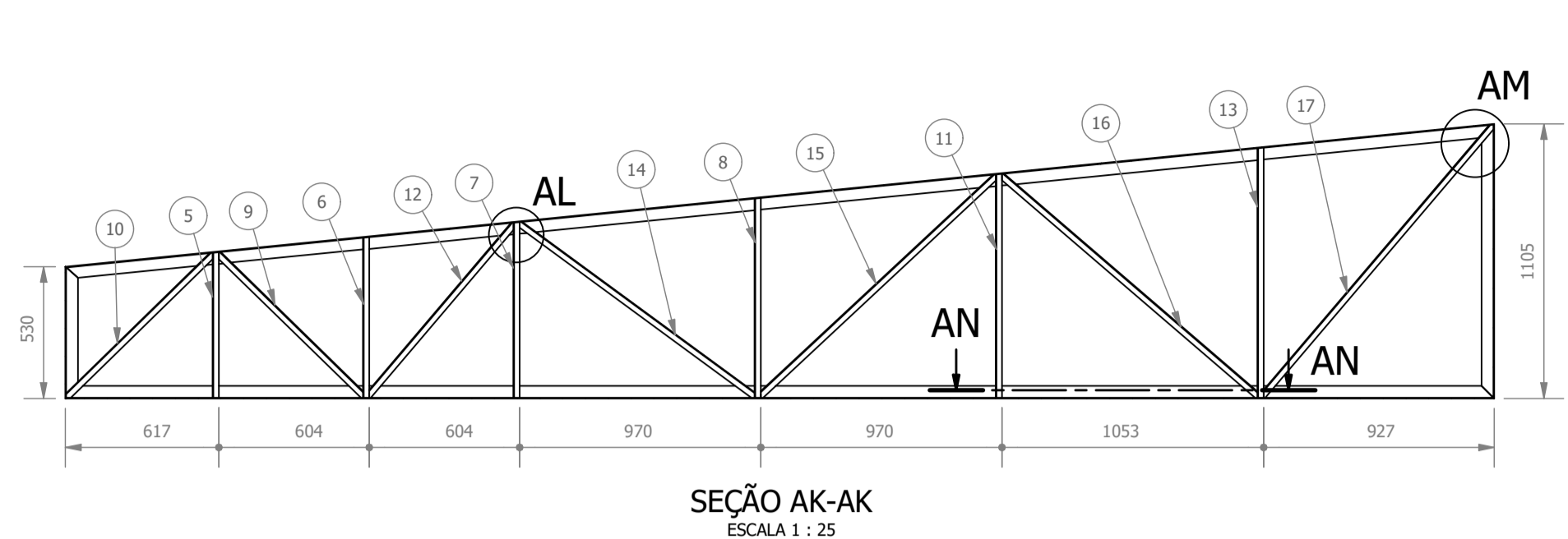
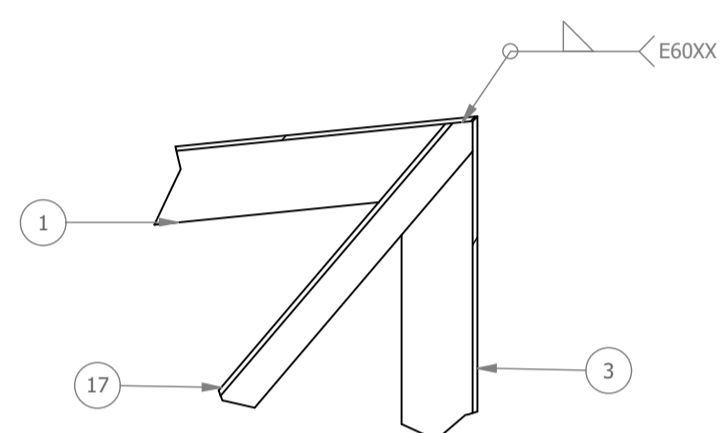


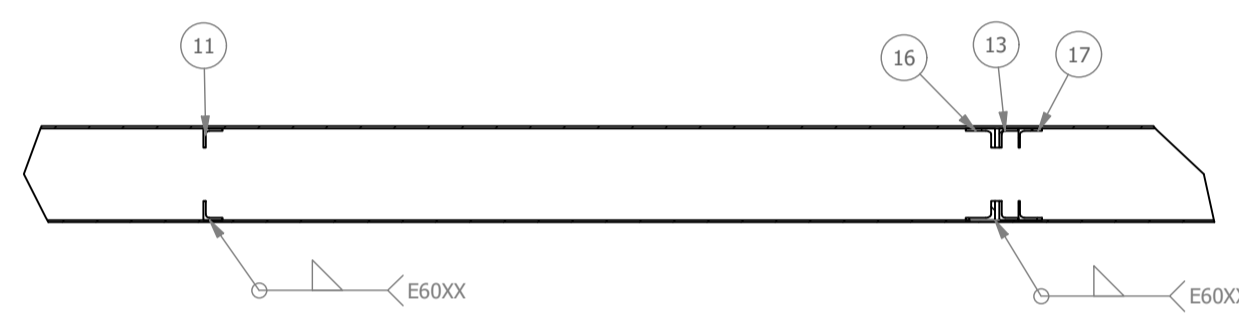
**PROJETO DE REFORMA E AMPLIAÇÃO DA COBERTURA DO TERMINAL RODoviÁRIO
ESCALA INDICADA**



DETALHE AL
ESCALA 1:5



DETALHE AM
ESCALA 1:5

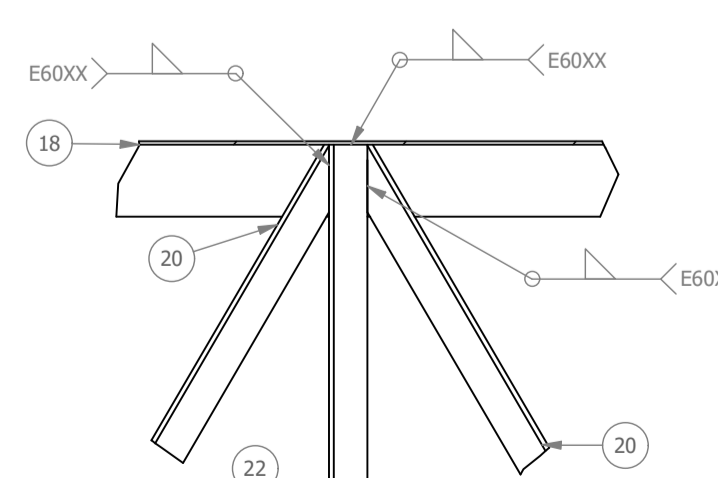
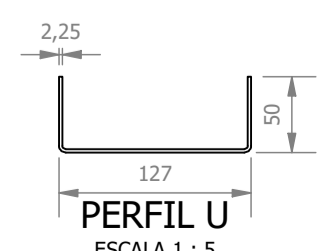
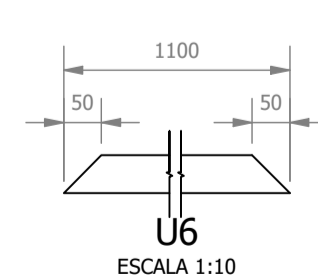
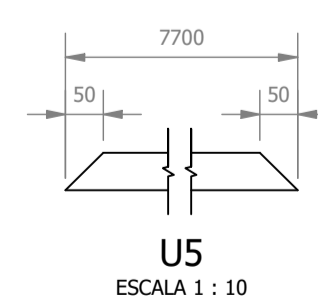
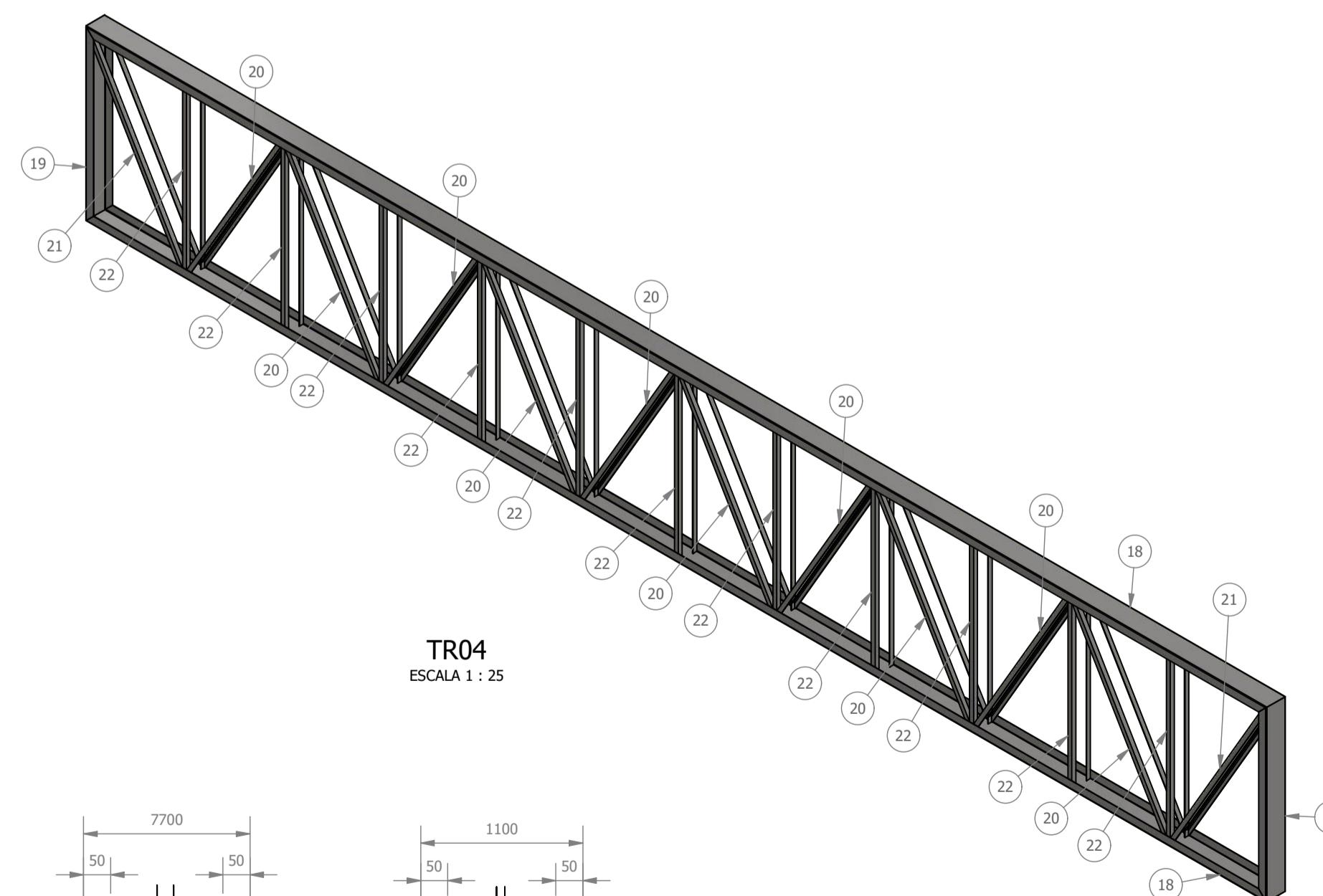
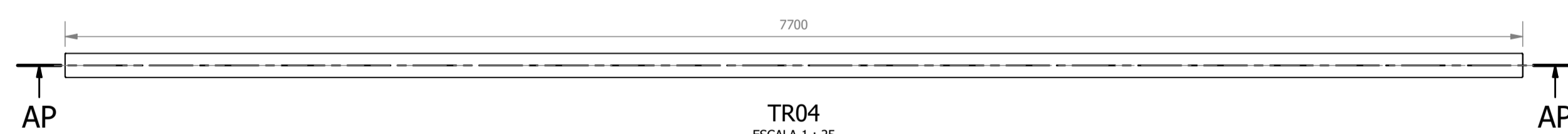
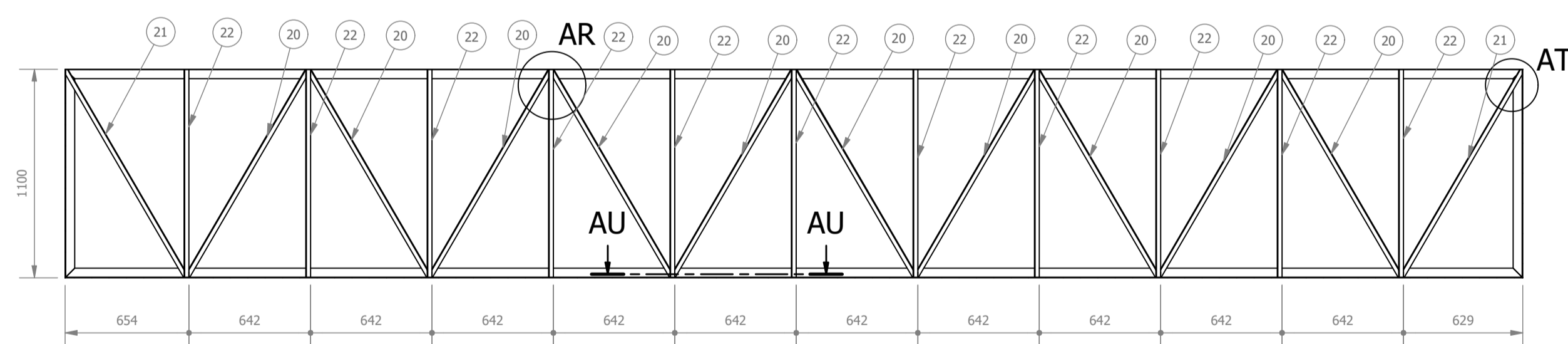


SEÇÃO AN-AN
ESCALA 1:10

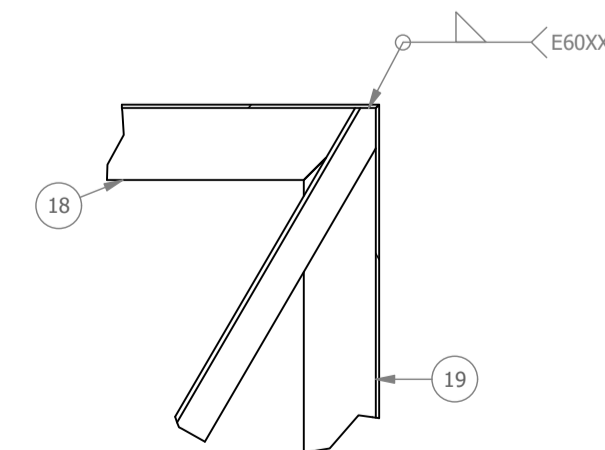
LISTA DE PEÇAS - TR01						
ID	ITEM	QTD	DESCRIÇÃO	COMPRIM.	MATERIAL	PESO UNIT.
1	U1	1	Perfil U 127x50x3	5775	Aço ASTM A36	29,4 kg
2	U2	1	Perfil U 127x50x3	530	Aço ASTM A36	2,6 kg
3	U3	1	Perfil U 127x50x3	1105	Aço ASTM A36	5,5 kg
4	U4	1	Perfil U 127x50x3	5746	Aço ASTM A36	29,3 kg
5	L1	2	CANTONEIRA L 1" x 1/8"	586	Aço ASTM A36	0,7 kg
6	L2	2	CANTONEIRA L 1" x 1/8"	646	Aço ASTM A36	0,8 kg
7	L3	2	CANTONEIRA L 1" x 1/8"	707	Aço ASTM A36	0,9 kg
8	L4	2	CANTONEIRA L 1" x 1/8"	804	Aço ASTM A36	1 kg
9	L5	2	CANTONEIRA L 1" x 1/8"	824	Aço ASTM A36	1 kg
10	L6	2	CANTONEIRA L 1" x 1/8"	829	Aço ASTM A36	1 kg
11	L7	2	CANTONEIRA L 1" x 1/8"	901	Aço ASTM A36	1,1 kg
12	L8	2	CANTONEIRA L 1" x 1/8"	911	Aço ASTM A36	1,1 kg
13	L9	2	CANTONEIRA L 1" x 1/8"	1006	Aço ASTM A36	1,2 kg
14	L10	2	CANTONEIRA L 1" x 1/8"	1180	Aço ASTM A36	1,4 kg
15	L11	2	CANTONEIRA L 1" x 1/8"	1304	Aço ASTM A36	1,6 kg
16	L12	2	CANTONEIRA L 1" x 1/8"	1366	Aço ASTM A36	1,7 kg
17	L13	2	CANTONEIRA L 1" x 1/8"	1435	Aço ASTM A36	1,7 kg

LISTA DE PEÇAS - TR04						
ID	ITEM	QTD	DESCRIÇÃO	COMPRIM.	MATERIAL	PESO UNIT.
18	U5	2	PERFIL U 127x50x2,25	7700	Aço ASTM A36	29,8 kg
19	U6	2	PERFIL U 127x50x2,25	1100	Aço ASTM A36	4,2 kg
20	L14	20	CANTONEIRA L 1" x 1/8"	1257	Aço ASTM A36	1,5 kg
21	L15	4	CANTONEIRA L 1" x 1/8"	1262	Aço ASTM A36	0,2 kg
22	L16	22	CANTONEIRA L 1" x 1/8"	1096	Aço ASTM A36	1,3 kg

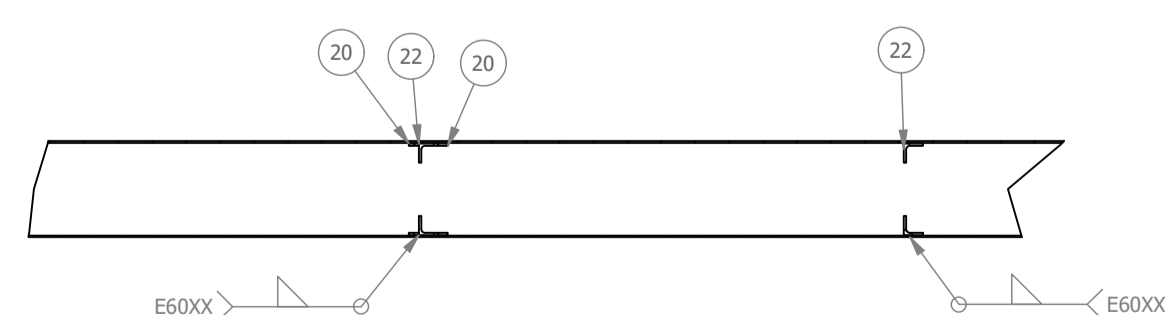
NOTA 1: EXCETO QUANDO ESPECIFICADO, AS COTAS DO DESENHO E AS DIMENSÕES DAS TABELAS SÃO EM mm



DETALHE AR
ESCALA 1:5



DETALHE AT
ESCALA 1:5



SEÇÃO AU-AU
ESCALA 1:10

REVISÃO	DATA	DESCRIÇÃO	RESP.
REV. 03	10/02/2023	CONFORME SOLICITAÇÕES DA SECRETARIA DE TRÂNSITO	DAC
REV. 02	20/10/2022	CONFORME SOLICITAÇÕES DA SECRETARIA DE TRÂNSITO	DAC
REV. 01	01/07/2022	CONFORME SOLICITAÇÕES DA SECRETARIA DE TRÂNSITO	DAC
REV. 00	20/06/2022	EMIÇÃO INICIAL	DAC

CLIENTE



Prefeitura Municipal de Pouso Alegre

PROJETO



DAC Engenharia

Rua Miguel Vianna, nº 81, sala 12
Bairro Morro Chic
CEP: 37500-080 - Itajubá / MG
Tel: (35) 3623-5720
www.dacengenharia.com.br

COORDENAÇÃO
ALOISIO CAETANO FERREIRA

RESPONSÁVEL TÉCNICO E AUTOR
ENGRº CIVIL FLÁVIA C. BARBOSA CREA: MG-187.842/D

EMPREENDIMENTO			
REFORMA E AMPLIAÇÃO DA COBERTURA DO TERMINAL RODoviÁRIO			
ENDEREÇO AVENIDA LEVINDO RIBEIRO COUTO, B. CENTRO POUSO ALEGRE - MINAS GERAIS	DISCIPLINA METÁLICA	FASE DO PROJETO EXECUTIVO	
ASSUNTO PROJETO DE ESTRUTURA METÁLICA DETALHAMENTO E LISTA DE MATERIAIS	FOLHA Nº: 04/05		
DATA INICIAL 20/06/2022	ESCALA INDICADA	REVISÃO R03	ARQUIVO DAC-PMPA-RATR-PE-MET-R03-04.DWG