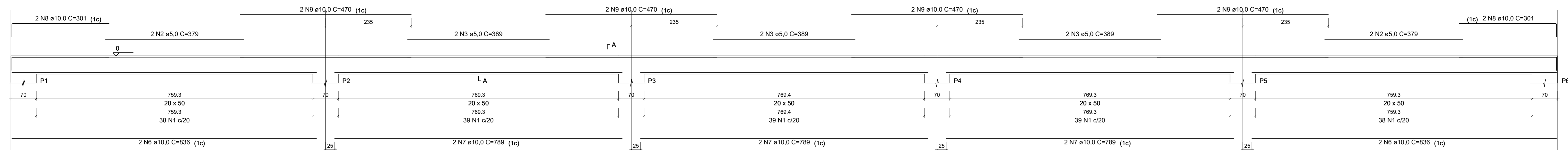
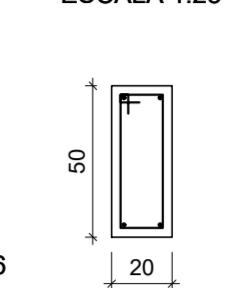


V1
ESCALA 1:50

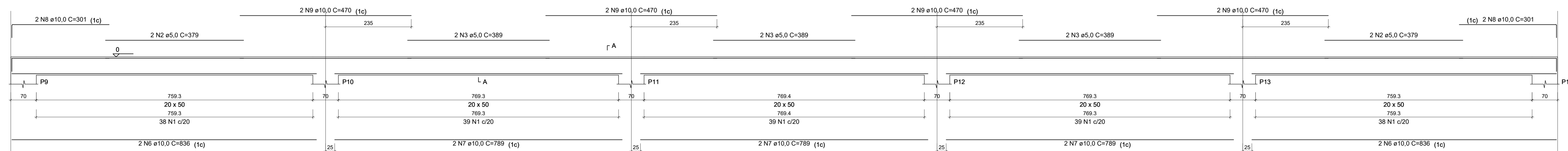


SEÇÃO A-A
ESCALA 1:25

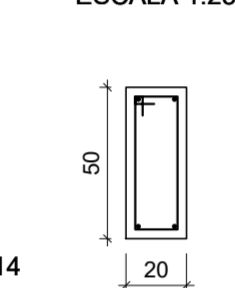


193 N1 ø5,0 C=127

V2
ESCALA 1:50

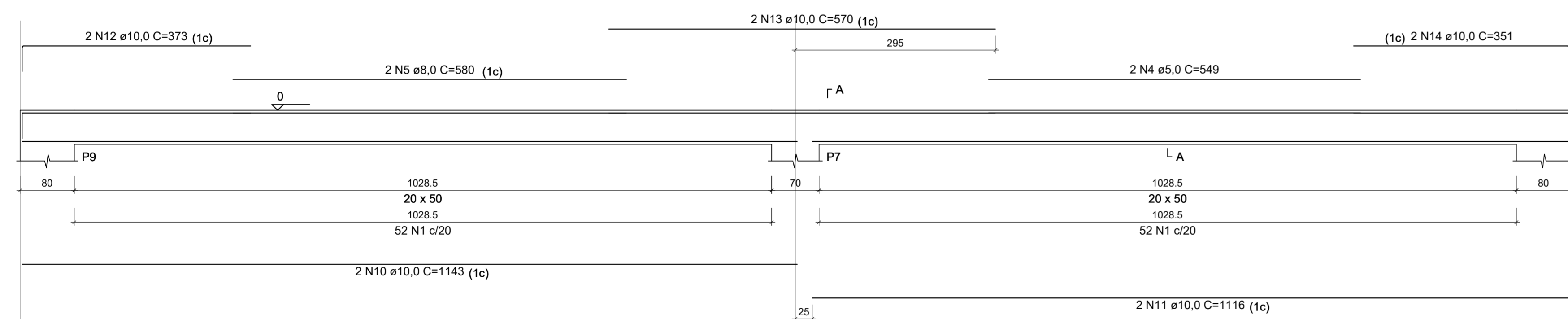


SEÇÃO A-A
ESCALA 1:25

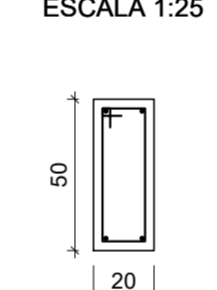


193 N1 ø5,0 C=127

V3
ESCALA 1:50

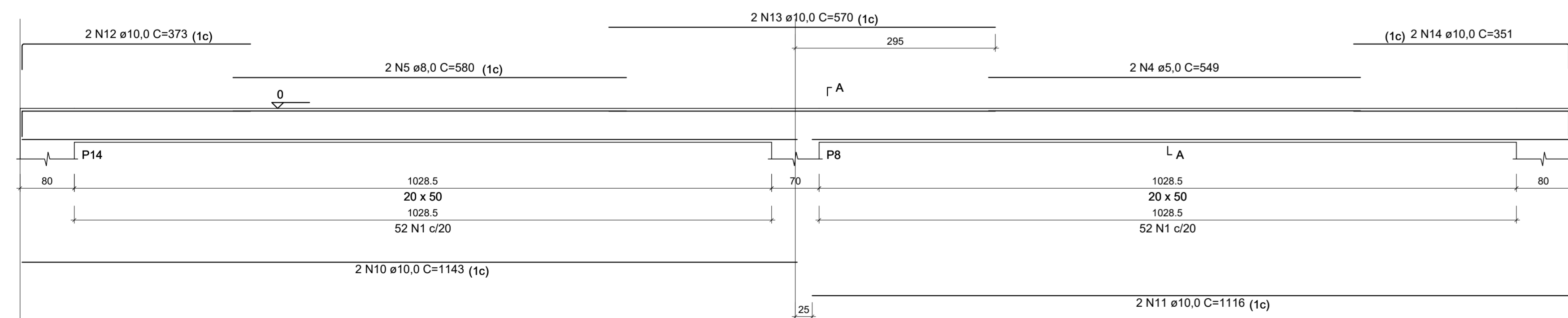


SEÇÃO A-A
ESCALA 1:25

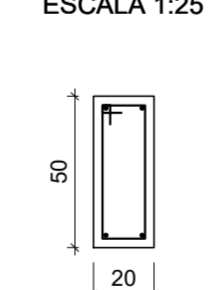


104 N1 ø5,0 C=127

V4
ESCALA 1:50



SEÇÃO A-A
ESCALA 1:25



104 N1 ø5,0 C=127

RELAÇÃO DO AÇO

AÇO	N	DIAM (mm)	QUANT	C. UNIT (cm)	C. TOTAL (cm)
CA60	1	5,0	594	127	75438
	2	5,0	8	379	3032
	3	5,0	12	389	4668
	4	5,0	4	549	2196
CA50	5	8,0	4	580	2320
	6	10,0	8	836	6688
	7	10,0	12	789	9456
	8	10,0	8	301	2408
	9	10,0	16	470	7520
	10	10,0	4	1143	4572
	11	10,0	4	1116	4464
	12	10,0	4	373	1492
	13	10,0	4	570	2280
	14	10,0	4	351	1404

RESUMO DO AÇO

AÇO	DIAM (mm)	C. TOTAL (m)	PESO + 10% (kg)
CA50	8,0	23,2	10,1
CA60	5,0	853,3	273,3
PESO TOTAL (kg)			
CA50		283,4	
CA60		144,7	

Volume de concreto (C-30) = 11,77 m³
Área de forma = 156,81 m²

<p>PROJETO</p> <p>Rua Miguel Vianna, nº 81, 2º Andar Bairro Morro Chic CEP: 37500-000 - Itajubá / MG Tel: (35) 3623-8646 www.dacengenharia.com.br</p>	
<p>COORDENAÇÃO ALOÍSO CAETANO FERREIRA</p>	
<p>RESPONSÁVEL TÉCNICO E AUTOR</p>	
<p>ENG. CIVIL FLÁVIA BARBOSA CREA MG-18742/D</p>	
<p>EMPREENDIMENTO CONSTRUÇÃO DE COBERTURA DA QUADRA COLINA DE SANTA BÁRBARA</p>	
<p>ENDEREÇO AV. MARIA DE PAIVA GARCIA, B. COLINA DE STA. BÁRBARA POUSO ALEGRE - MINAS GERAIS</p>	
<p>DISCIPLINA ESTRUTURAL</p>	
<p>ASSUNTO PROJETO ESTRUTURAL DE FUNDAÇÃO VIGAS</p>	
<p>FASE DO PROJETO EXECUTIVO</p>	
<p>FOLHA Nº 05/05</p>	
<p>DATA INICIAL 10/03/2022</p>	<p>ESCALA INDICADA</p>
<p>REVISÃO R00</p>	<p>ARQUIVO DAC-PMPA-OSB-EST-PE-R00.DWG</p>