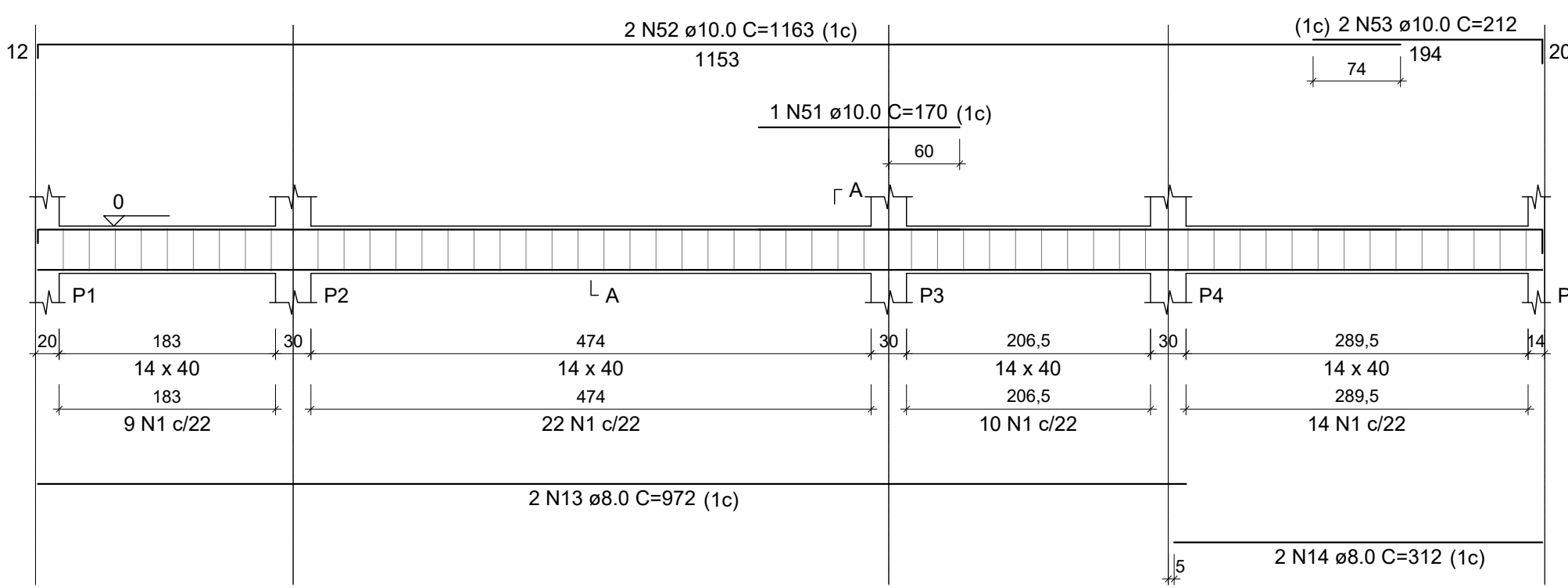
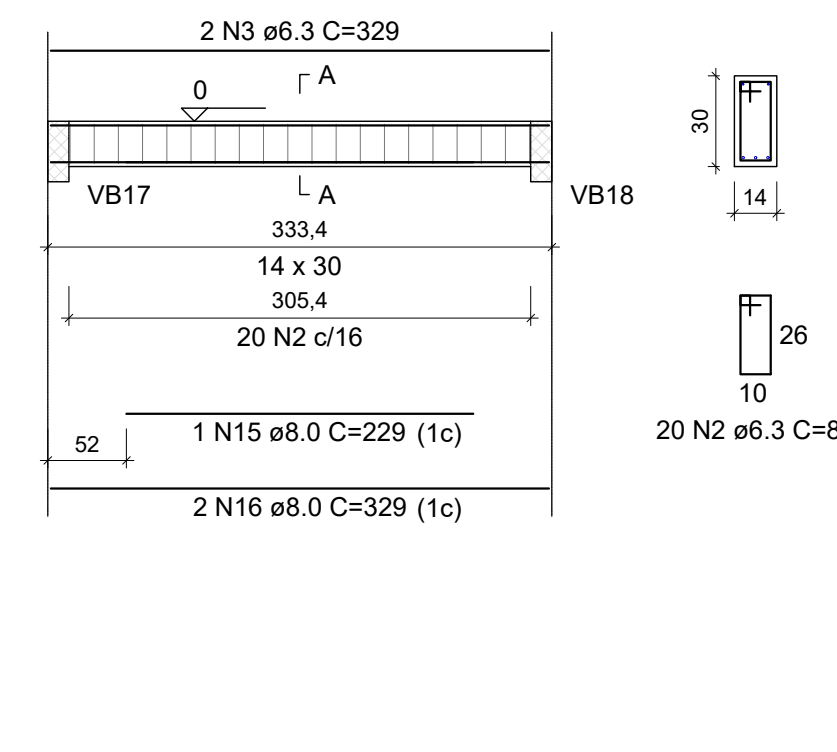


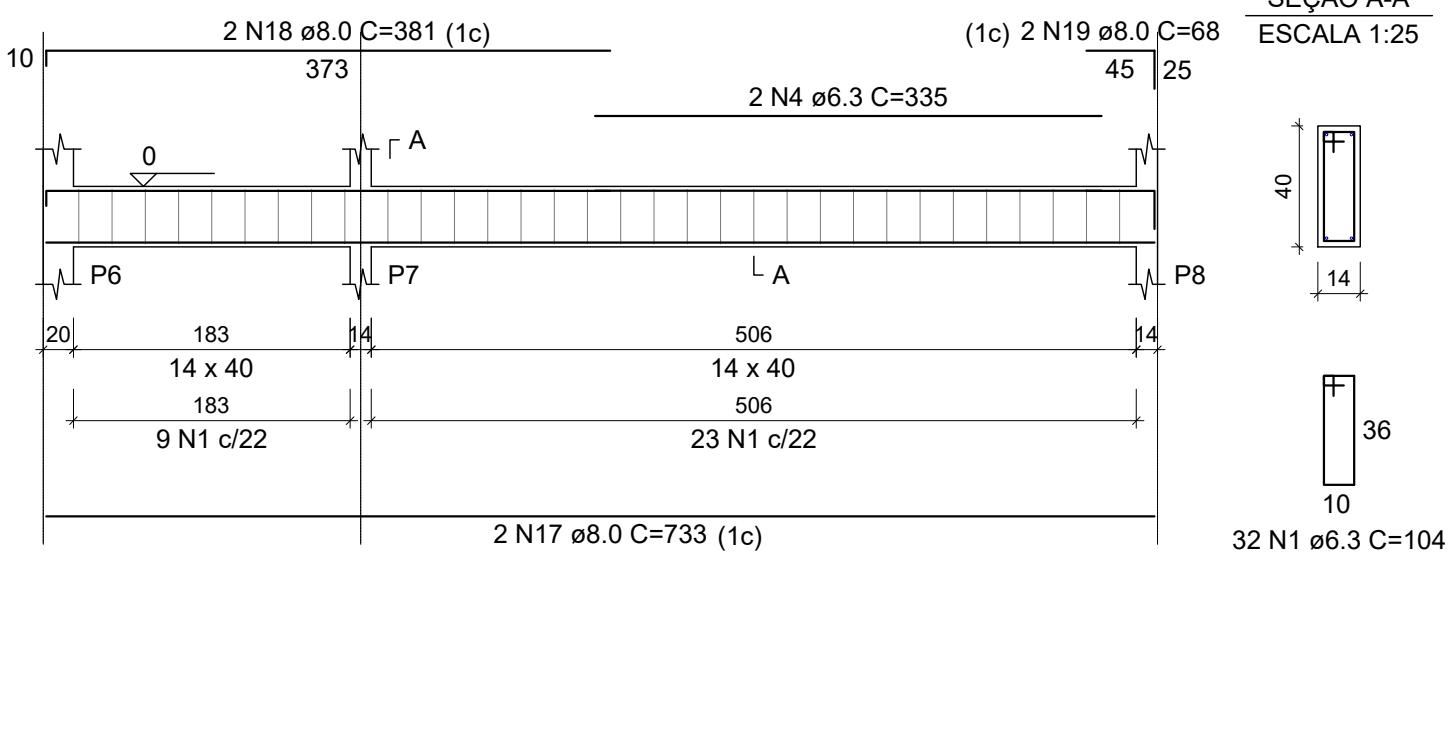
VB1 ESCALA 1:50



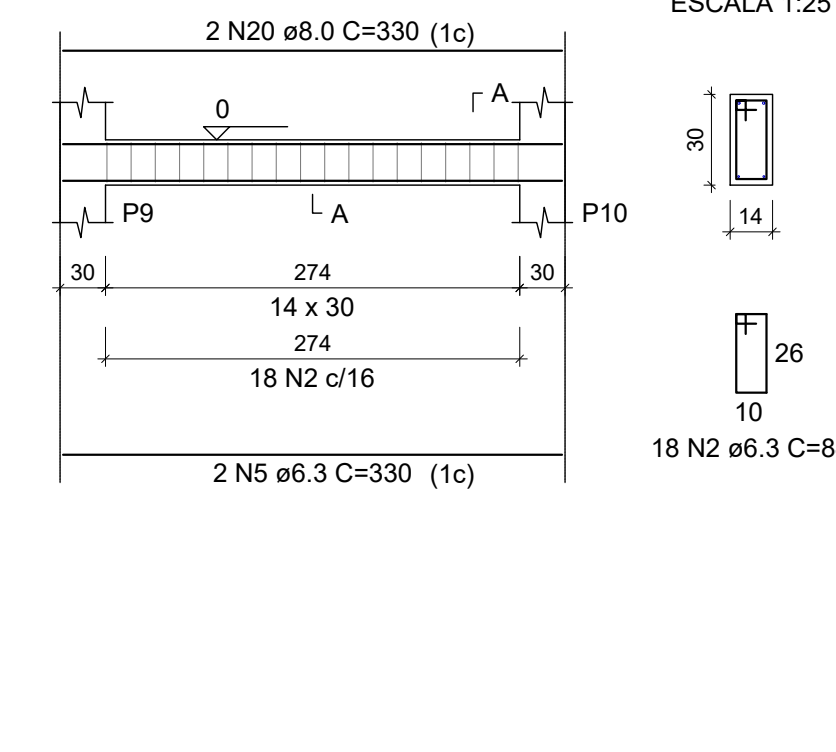
VB2 ESCALA 1:50



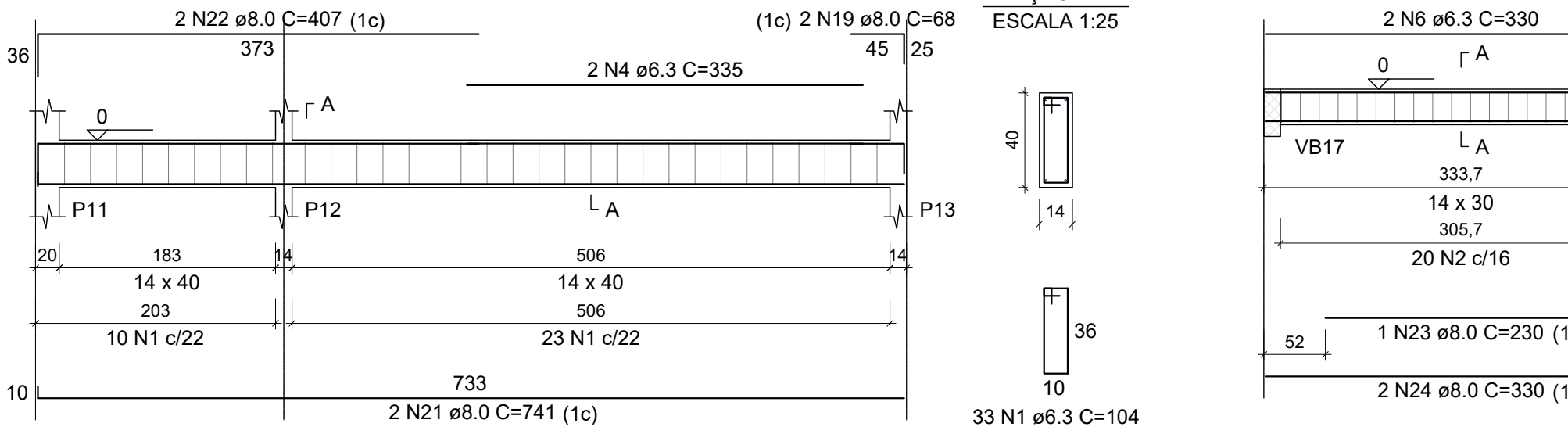
VB3 ESCALA 1:50



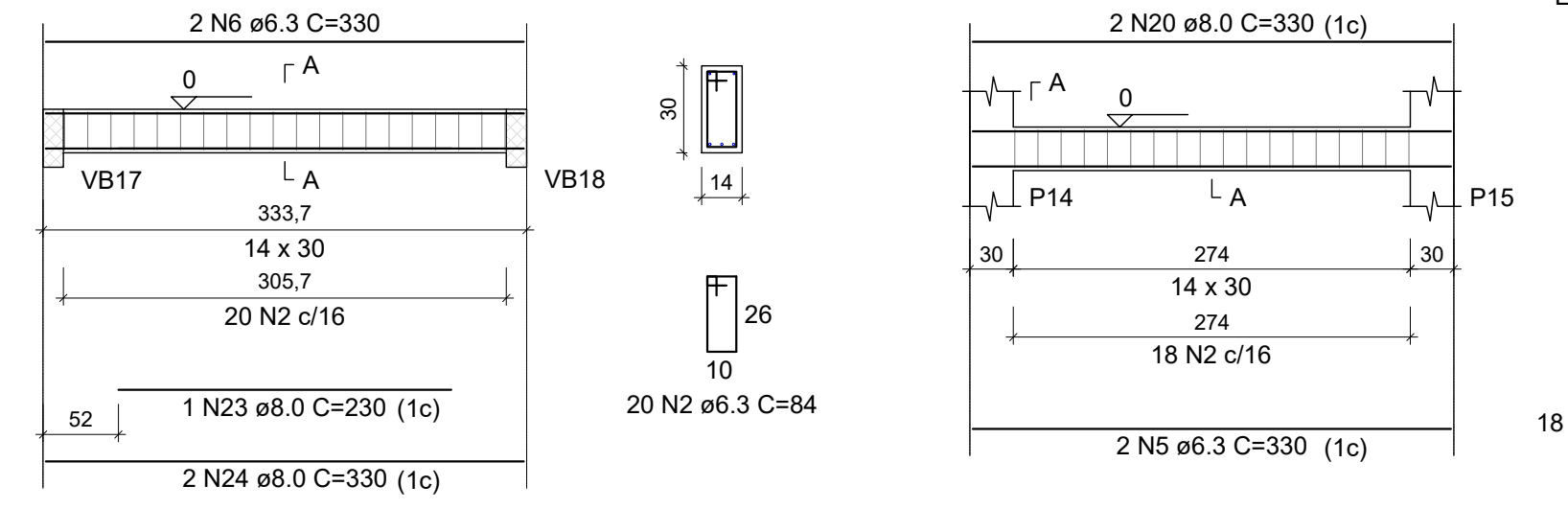
VB4 ESCALA 1:50



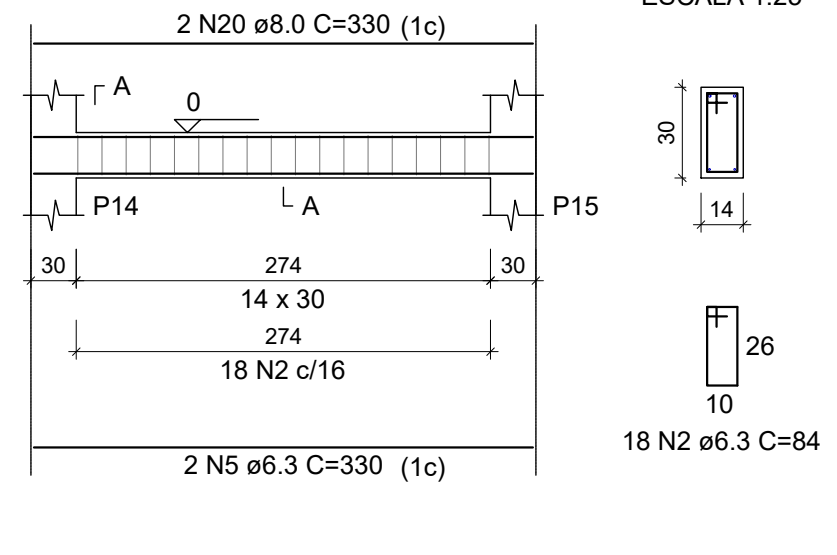
VB5 ESCALA 1:50



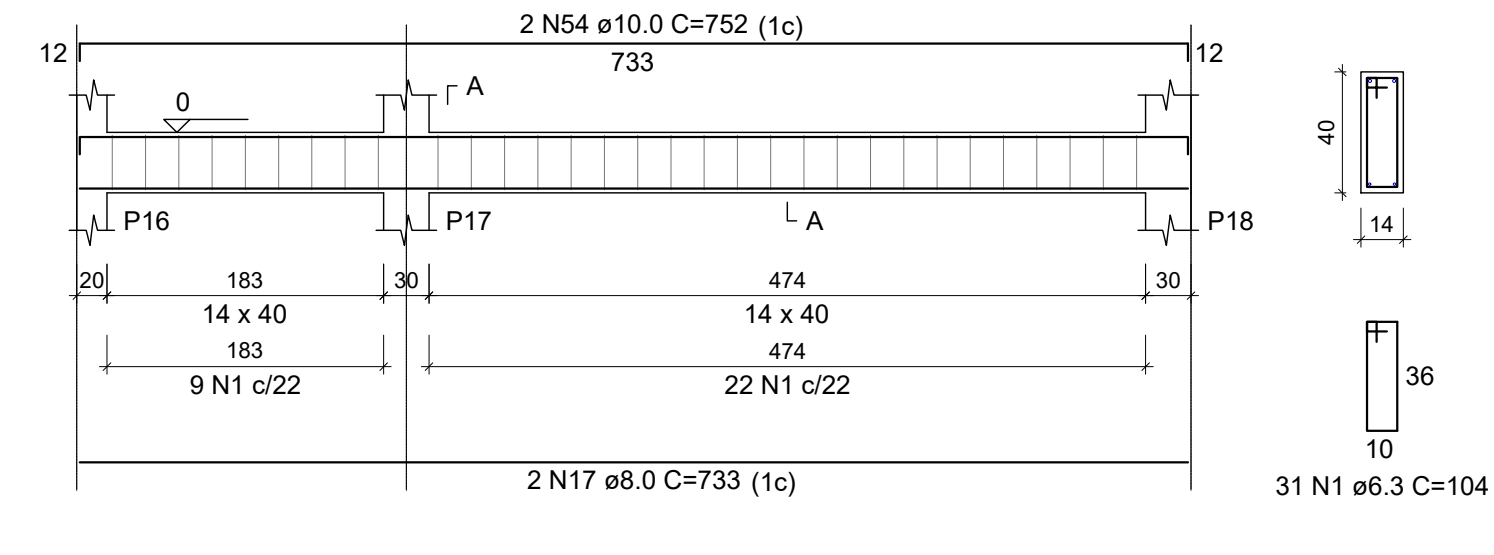
VB6 ESCALA 1:50



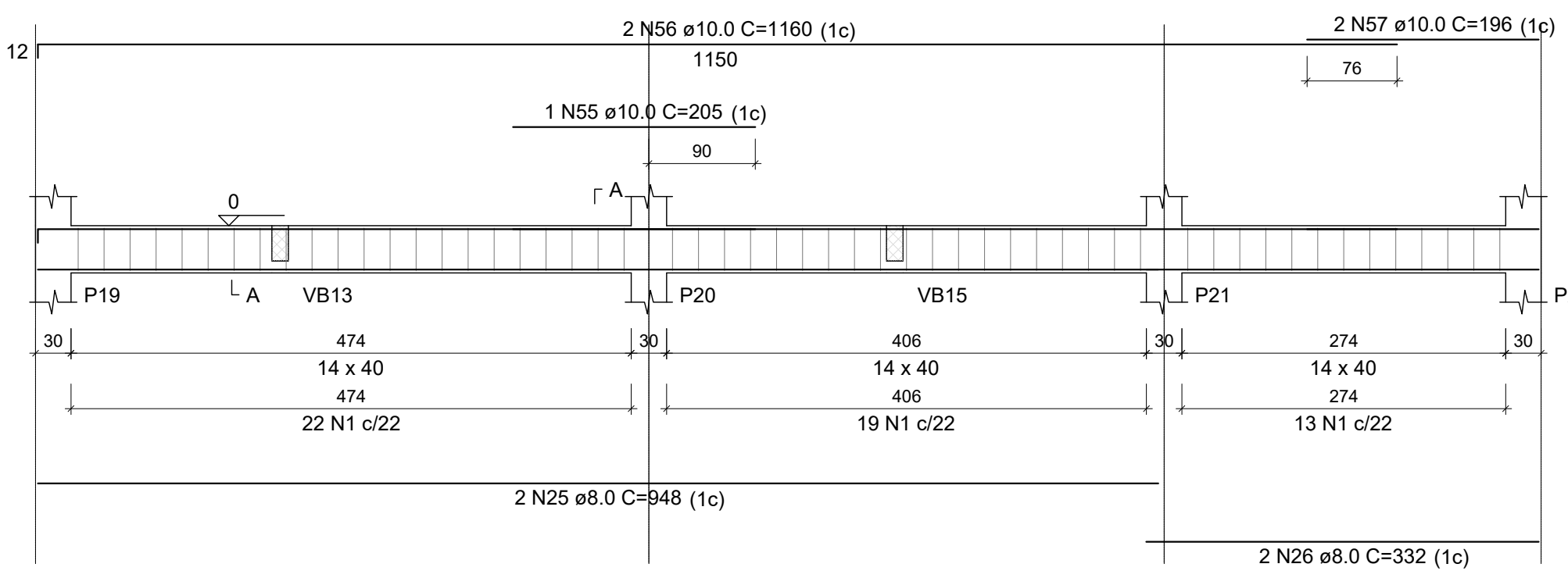
VB7 ESCALA 1:50



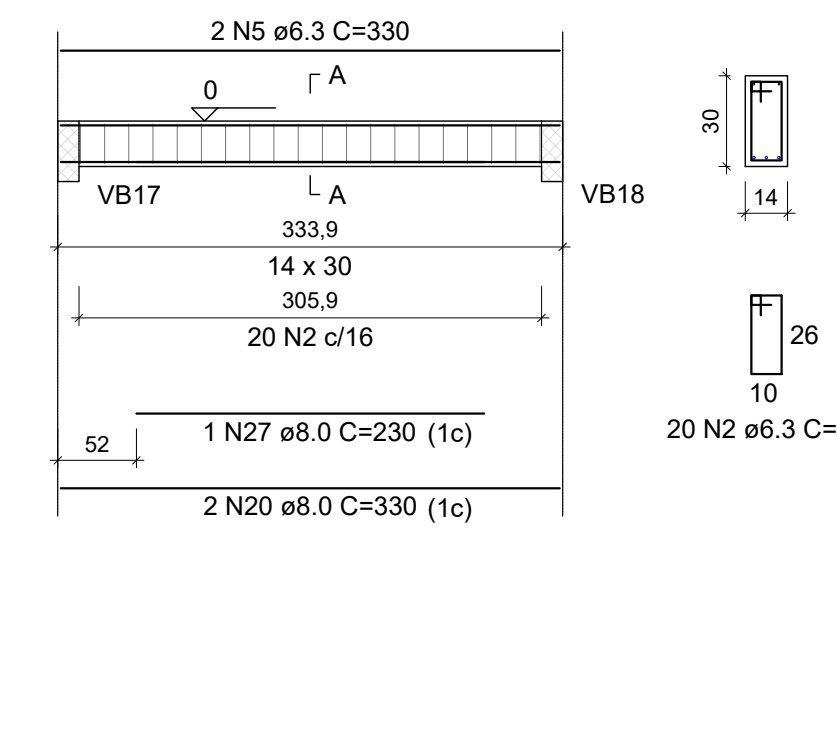
VB8 ESCALA 1:50



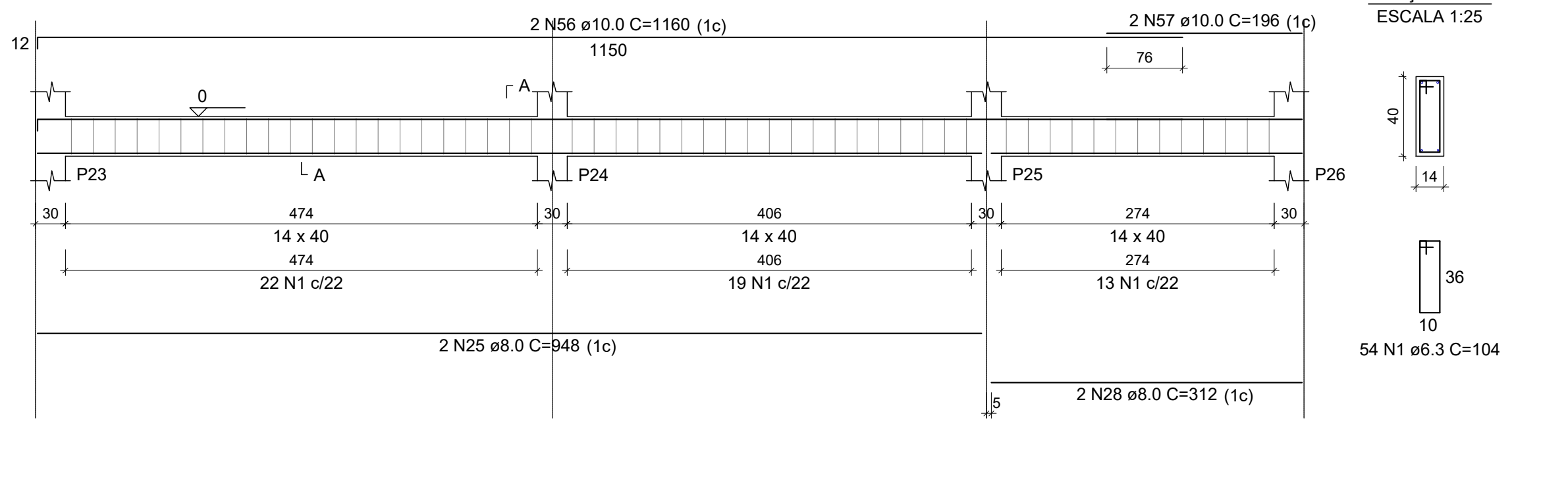
VB9 ESCALA 1:50



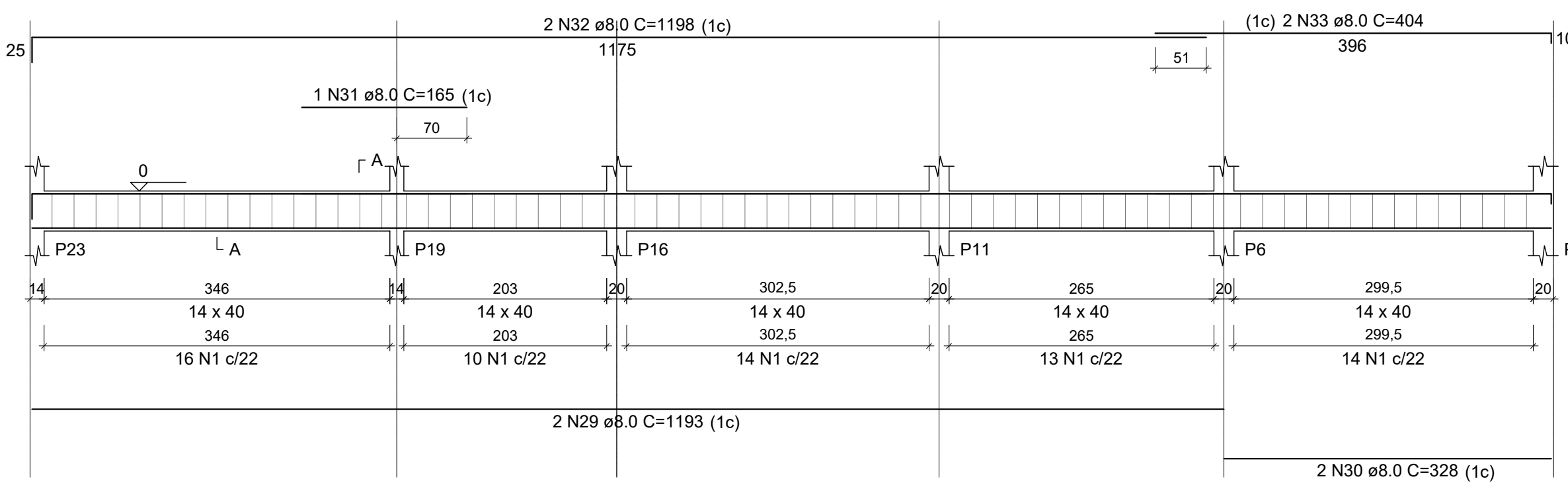
VB10 ESCALA 1:50



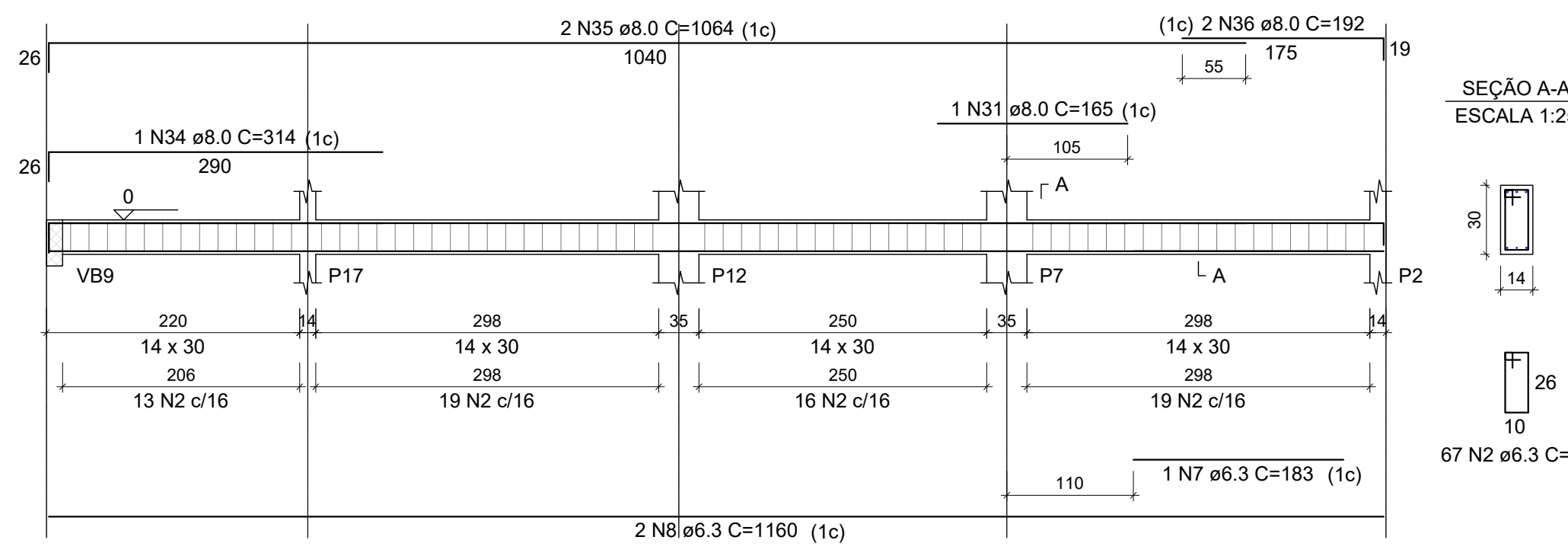
VB11 ESCALA 1:50



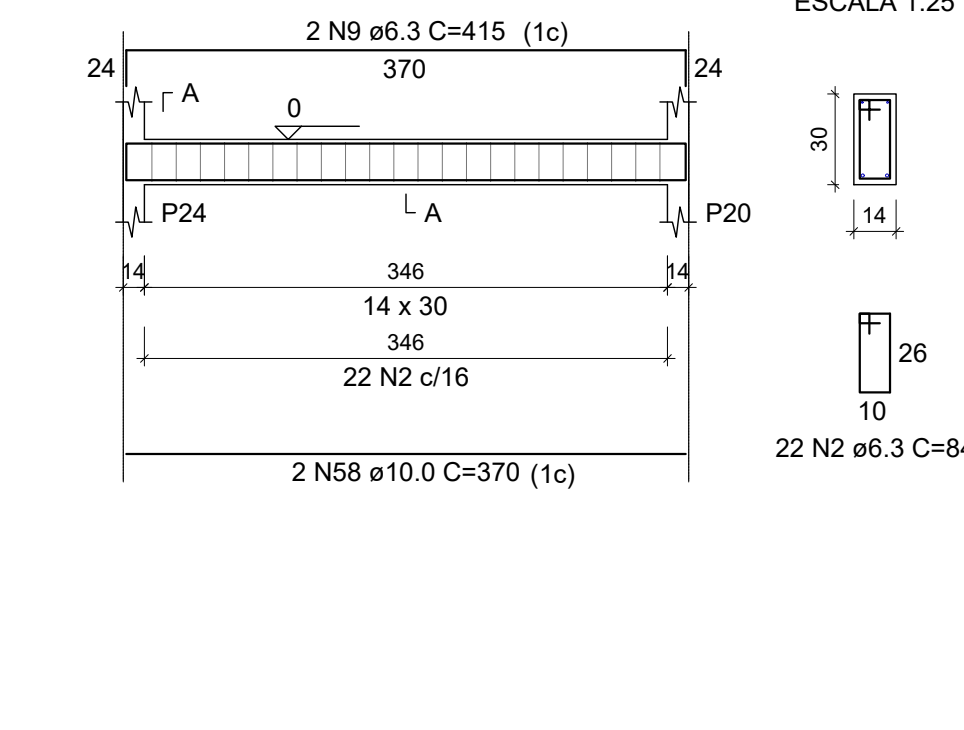
VB12 ESCALA 1:50



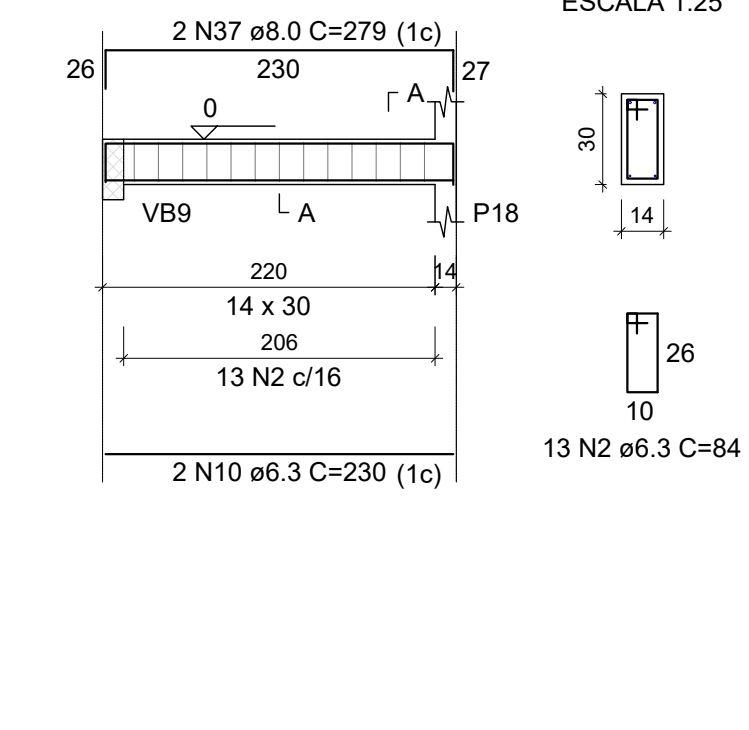
VB13 ESCALA 1:50



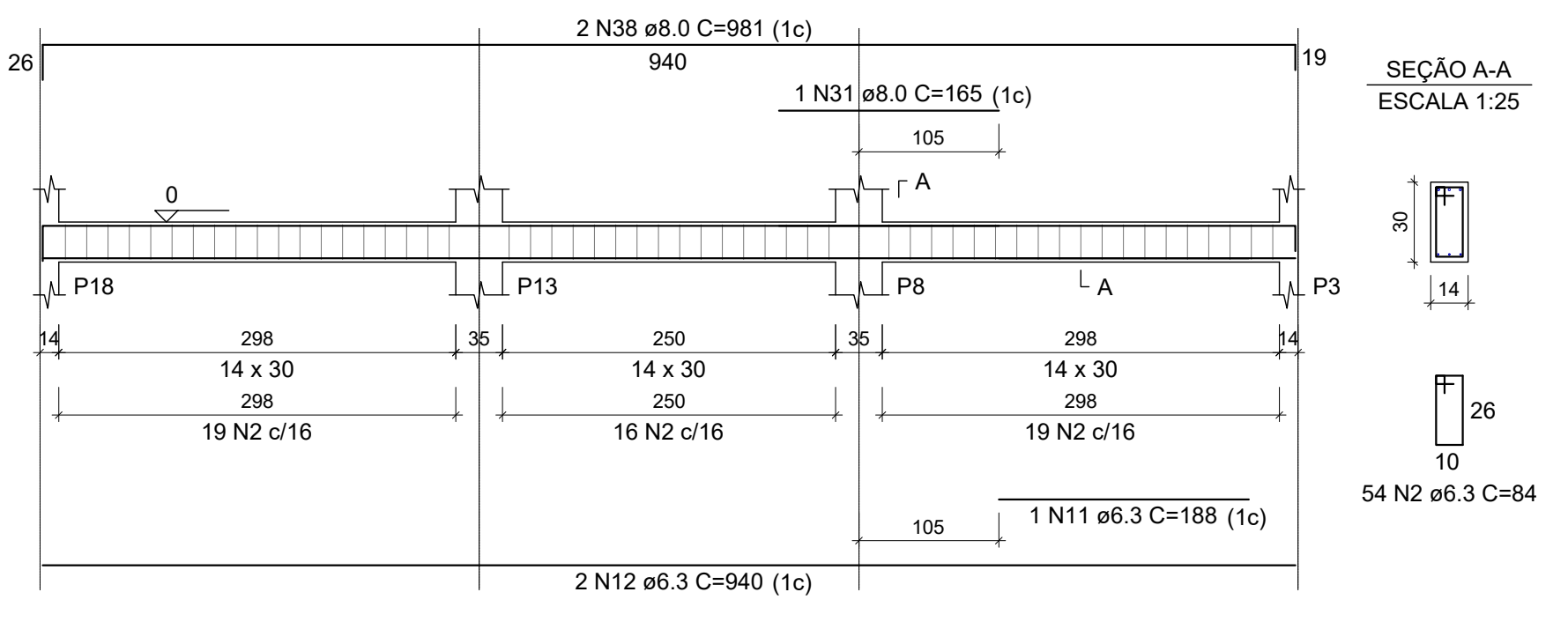
VB14 ESCALA 1:50



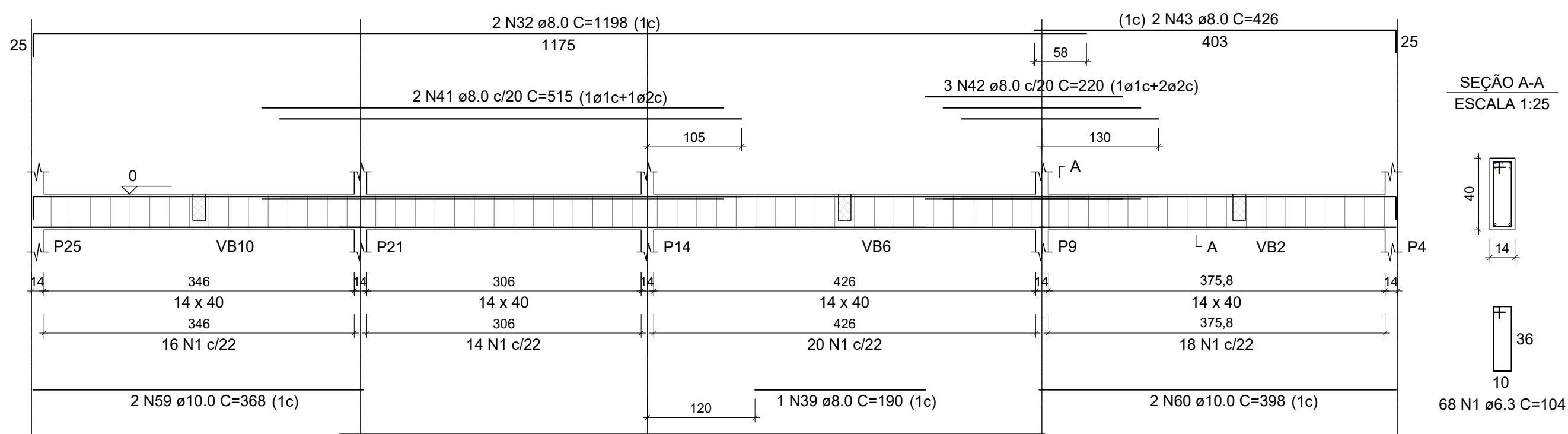
VB15 ESCALA 1:50



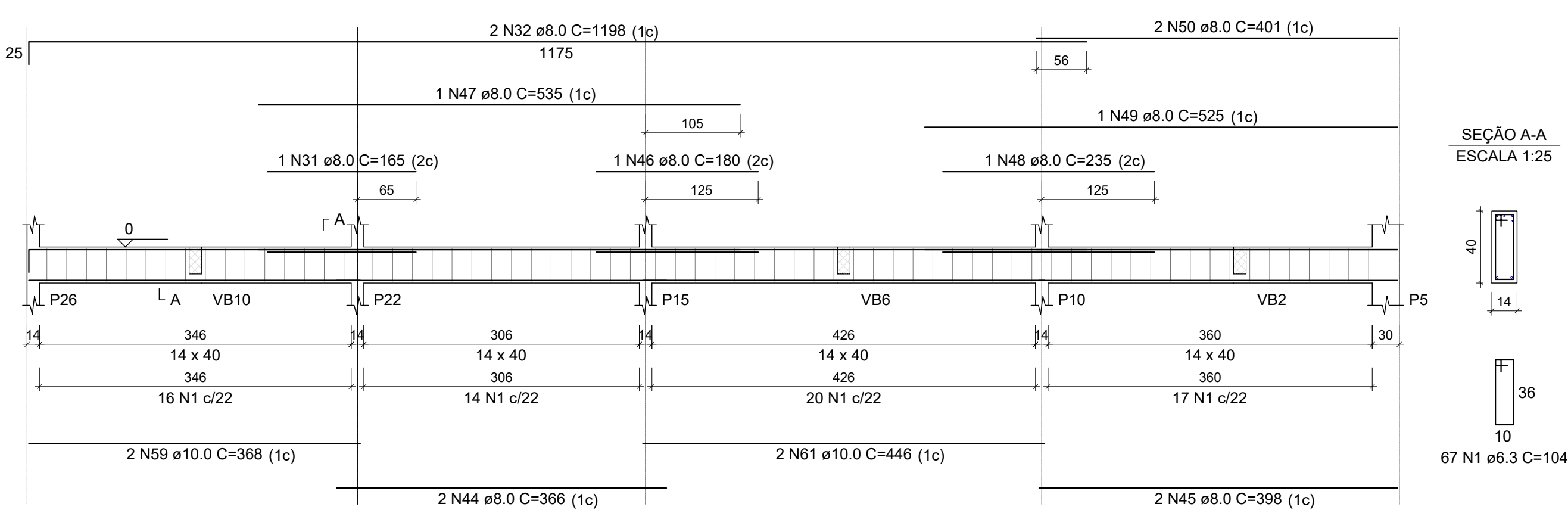
VB16 ESCALA 1:50



VB17 ESCALA 1:50



VB18 ESCALA 1:50



RELAÇÃO DO AÇO

CASO	N	DIAM (mm)	QUANT	C UNIT (cm)	C TOTAL (cm)
1	6.3	461	104	47944	
2	6.3	252	84	21168	
3	6.3	3	309	606	
4	6.3	4	335	1340	
5	6.3	5	350	1680	
6	6.3	2	330	660	
7	6.3	1	183	183	
8	6.3	2	230	460	
9	6.3	2	415	830	
10	6.3	2	1150	2300	
11	6.3	1	188	188	
12	6.3	2	840	1680	
13	6.3	2	972	1944	
14	8.0	2	312	624	
15	8.0	1	228	228	
16	8.0	2	329	658	
17	8.0	4	733	2932	
18	8.0	2	381	762	
19	8.0	4	68	272	
20	8.0	0	330	1980	
21	8.0	2	741	1482	
22	8.0	2	407	814	
23	8.0	1	230	230	
24	8.0	2	330	660	
25	8.0	4	948	3792	
26	8.0	2	332	664	
27	8.0	1	230	230	
28	8.0	2	312	624	
29	8.0	2	1160	2320	
30	8.0	2	328	656	
31	8.0	4	165	660	
32	8.0	0	1168	7168	
33	8.0	2	404	808	
34	8.0	1	314	314	
35	8.0	2	1064	2128	
36	8.0	1	304	304	
37	8.0	2	279	558	
38	8.0	2	981	1962	
39	8.0	1	190	190	
40	8.0	2	796	1592	
41	8.0	2	515	1030	
42	8.0	3	220	660	
43	8.0	2	426	852	
44	8.0	2	366	732	
45	8.0	2	398	796	
46	8.0	1	180	180	
47	8.0	1	535	535	
48	8.0	1	255	255	
49	8.0	1	525	525	
50	8.0	2	401	802	
51	10.0	1	170	170	
52	10.0	2	1163	2326	
53	10.0	2	212	424	
54	10.0	2	752	1504	
55	10.0	4	205	820	
56	10.0	4	196	784	
57	10.0	4	196	784	
58	10.0	2	370	740	
59	10.0	4	368	1472	
60	10.0	2	398	796	
61	10.0	2	446	892	

RESUMO DO AÇO

AÇO	DIAM (mm)	C TOTAL (m)	PESO + 10% (kg)
CASO	6.3	796.1	141.3
	8.0	430.5	186.9
	10.0	139.5	94.6
<b>PESO TOTAL (kg)</b>			<b>418.8</b>
CASO			495.8

Volume de concreto (C-25) = 7.17 m³  
Área de forma = 132.16 m²

PROJETO	CONSTRUÇÃO DA SEDE ADMINISTRATIVA DO PARQUE NATURAL MUNICIPAL DE POUSO ALEGRE
EMPRESA	DAC Engenharia
PROJETO	ESTRUTURA
FASE DO PROJETO	EXECUTIVO
FOLHA Nº	06/08

**Prefeitura Municipal de Pouso Alegre**  
**DAC Engenharia**  
 Rua Miguel Viana, nº 81, Sala 12  
 Bairro Monte Cristo  
 CEP: 37500-000 - Itaipava / MG  
 Tel: (35) 3623-5700  
 www.dacengenharia.com.br