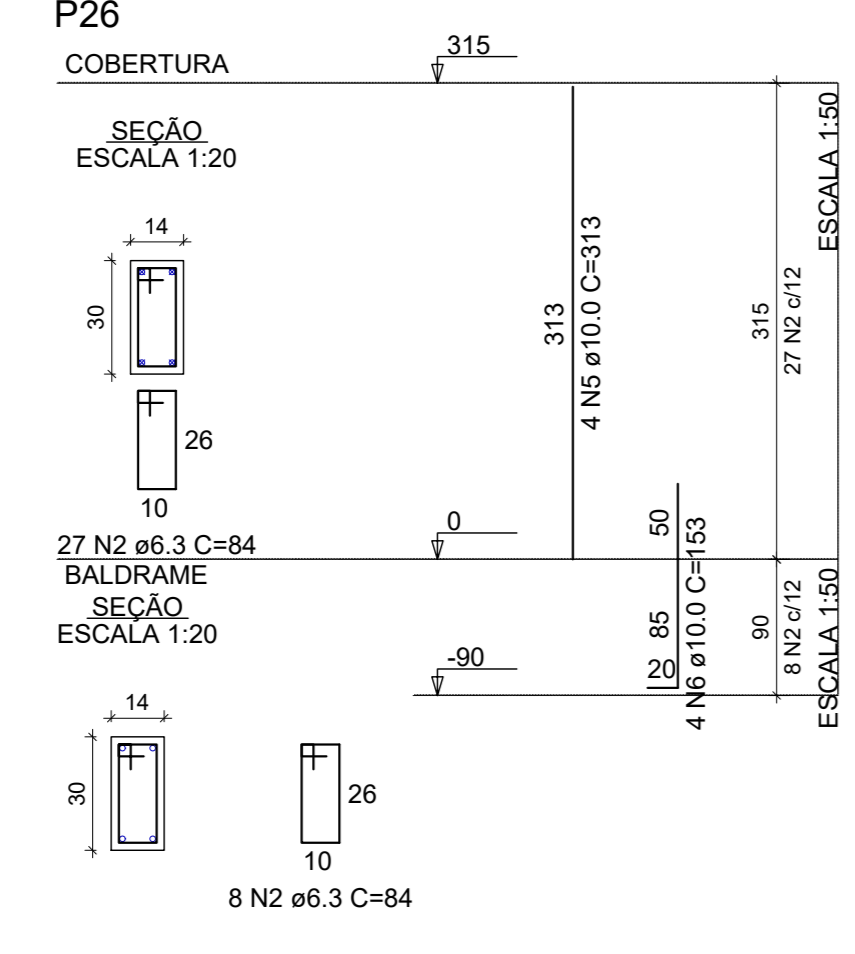
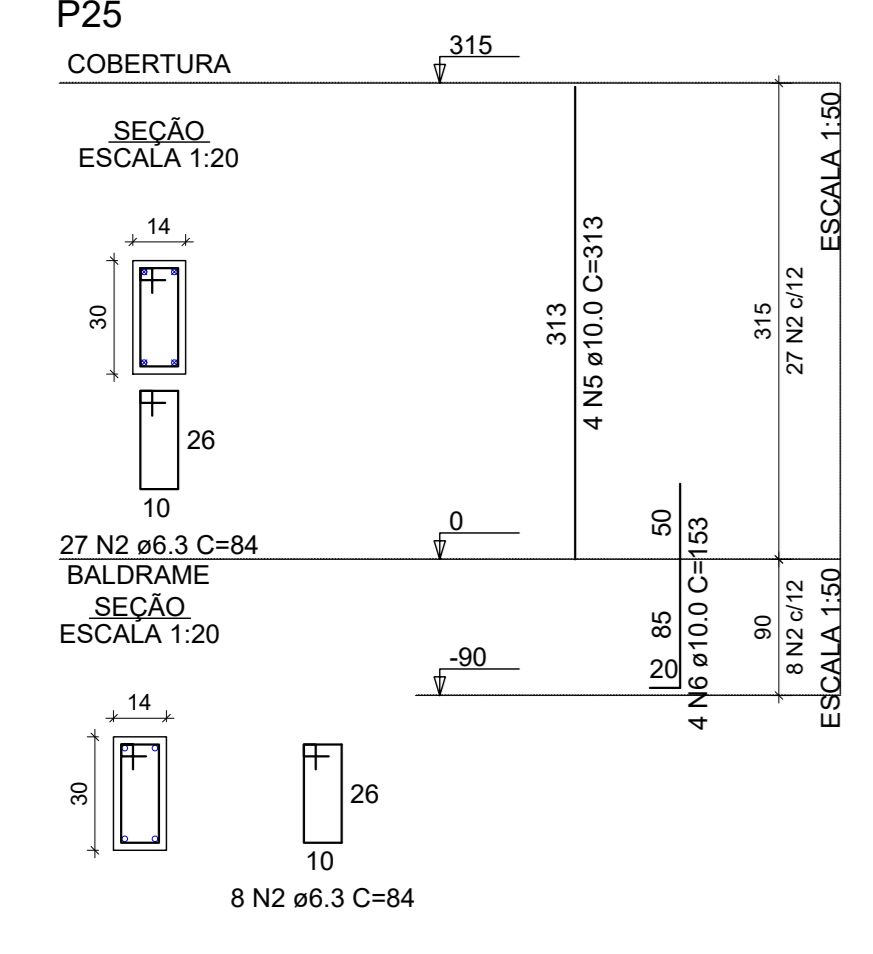
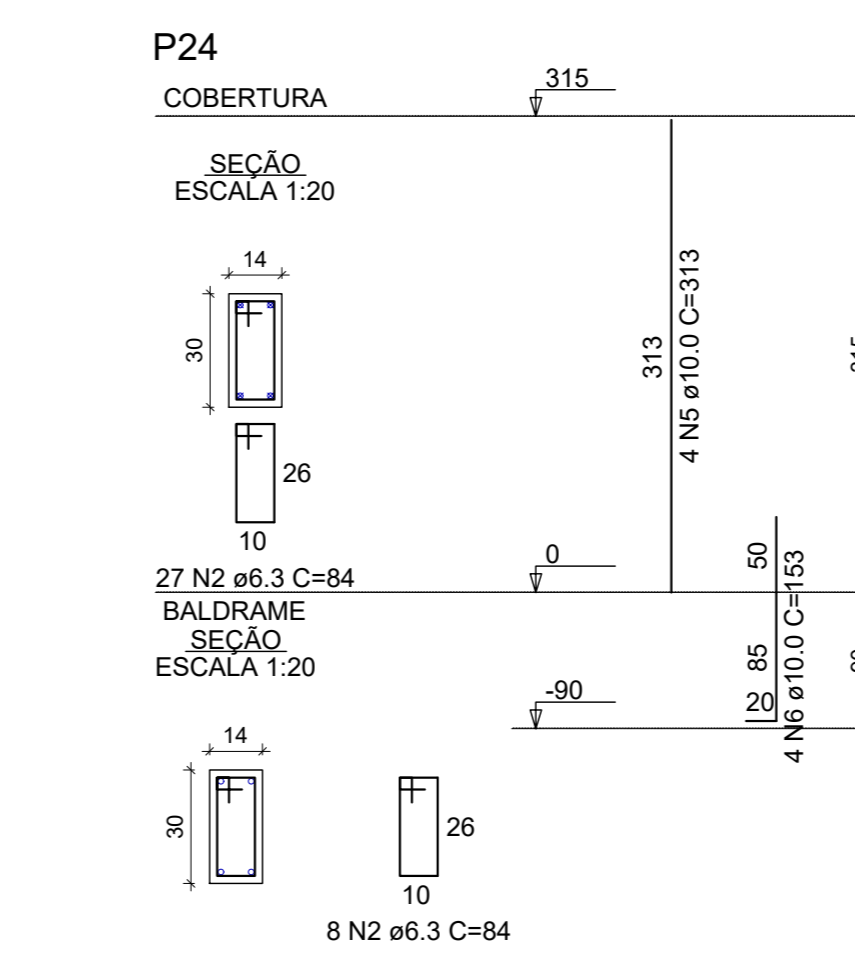
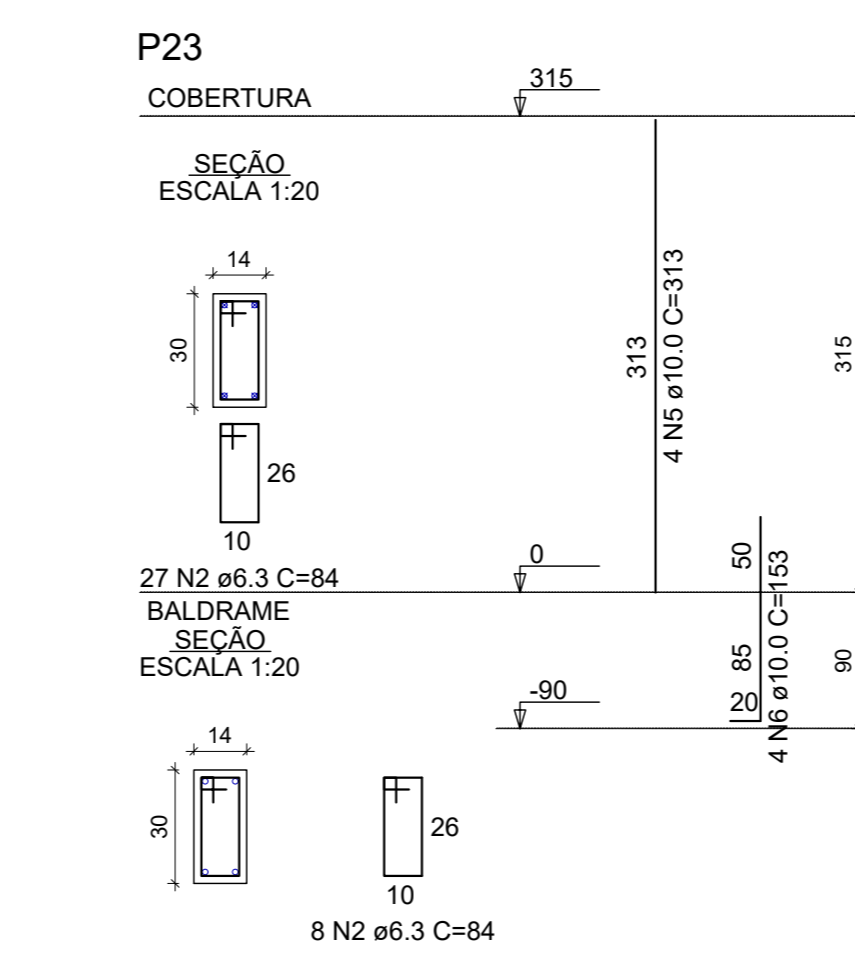
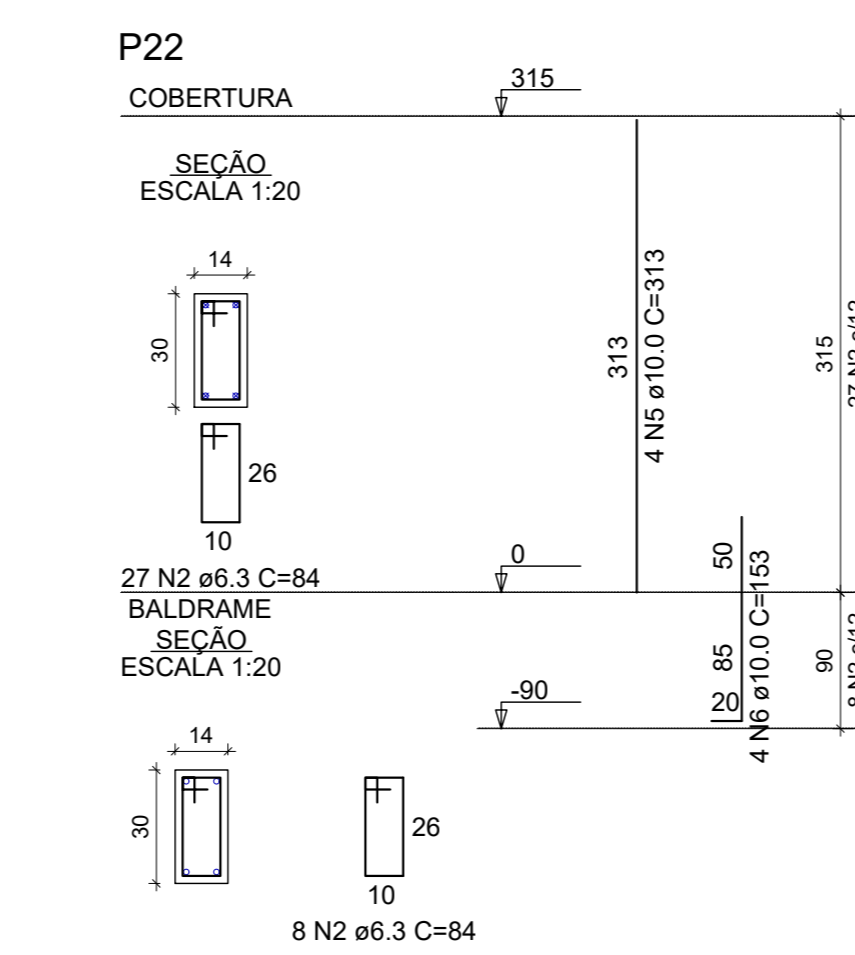
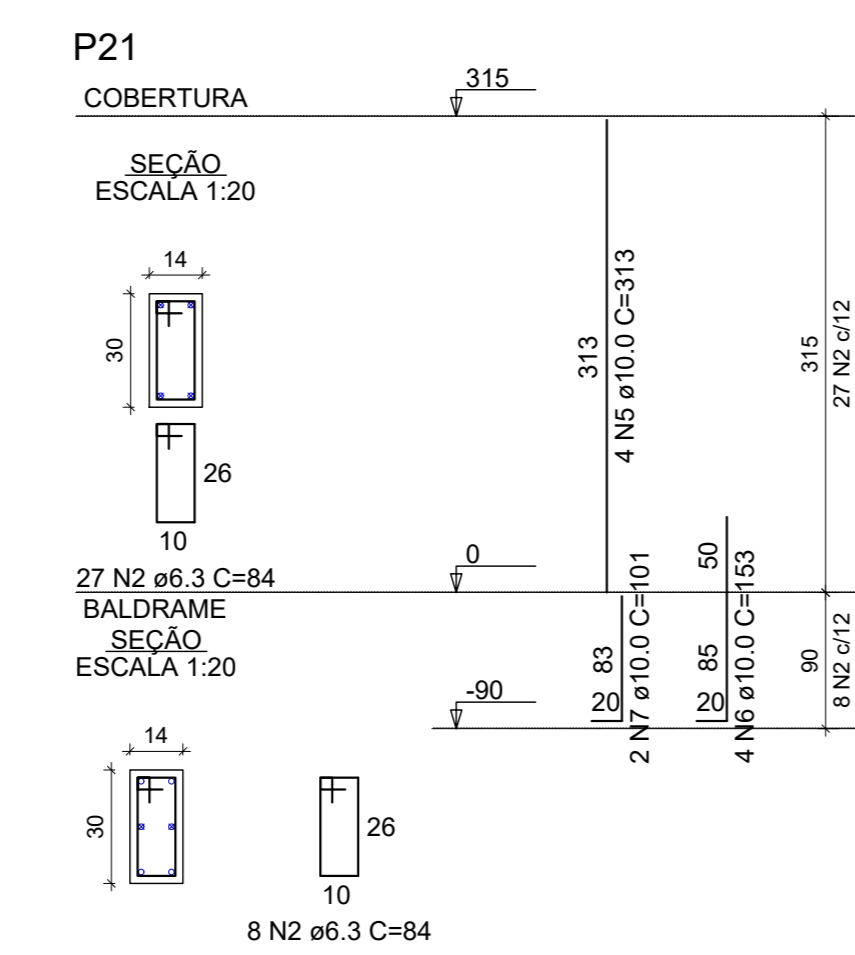
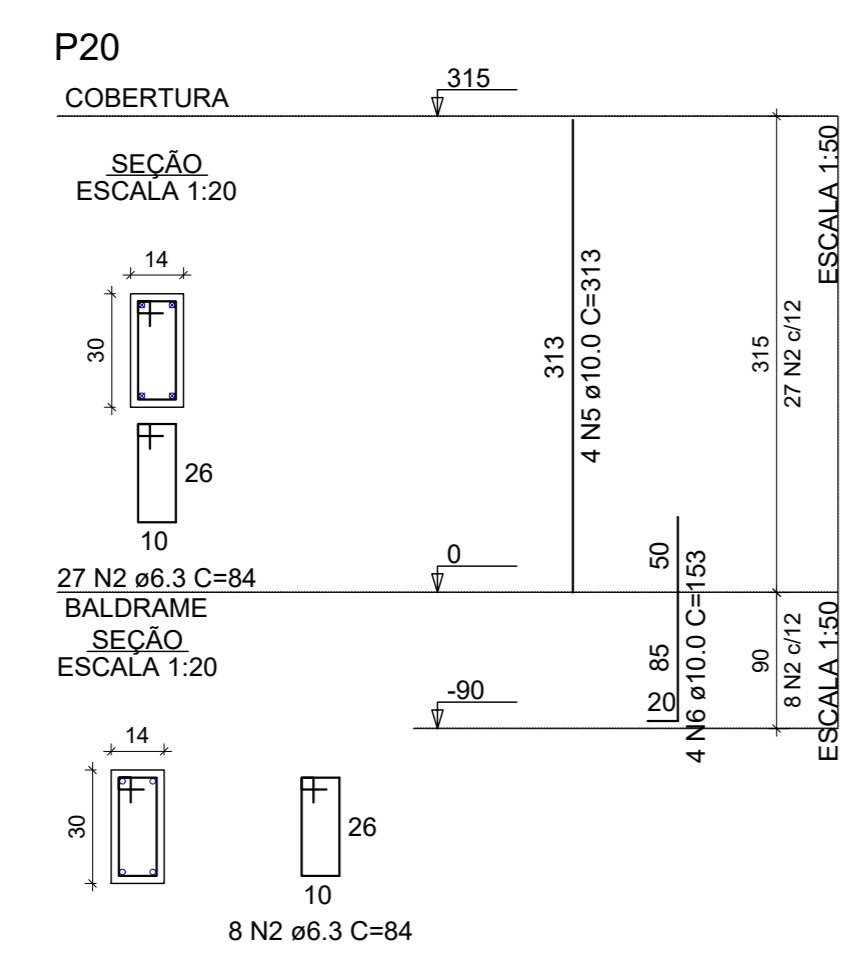
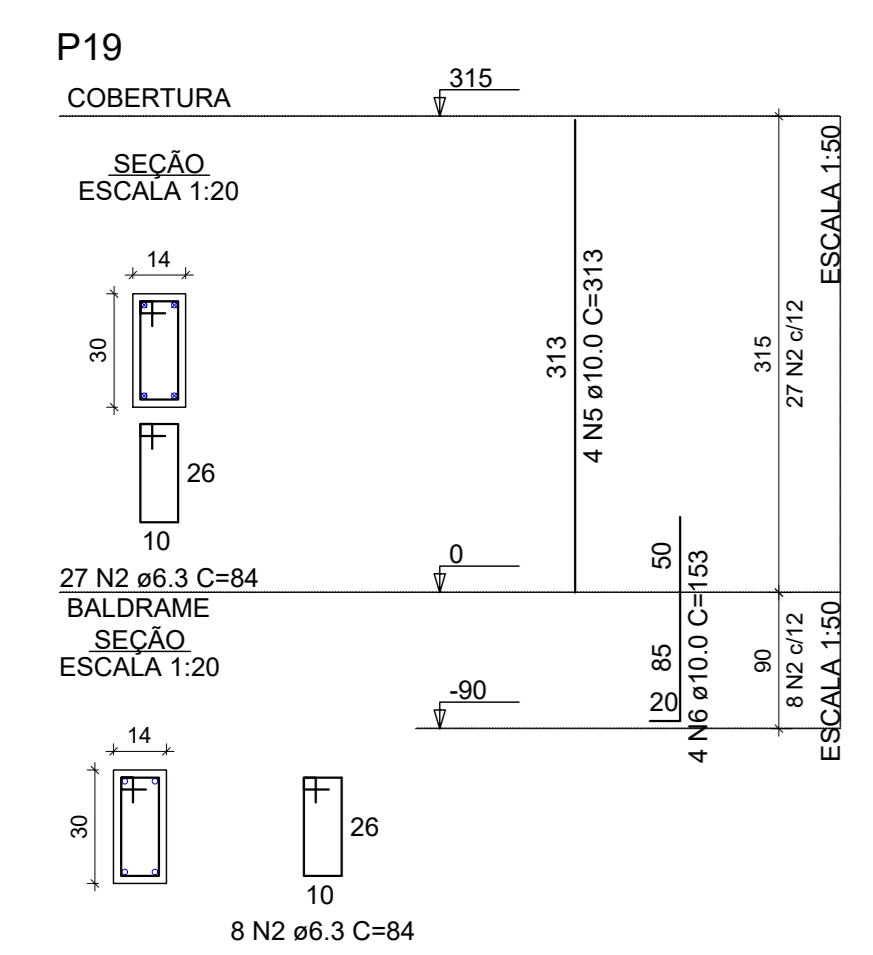
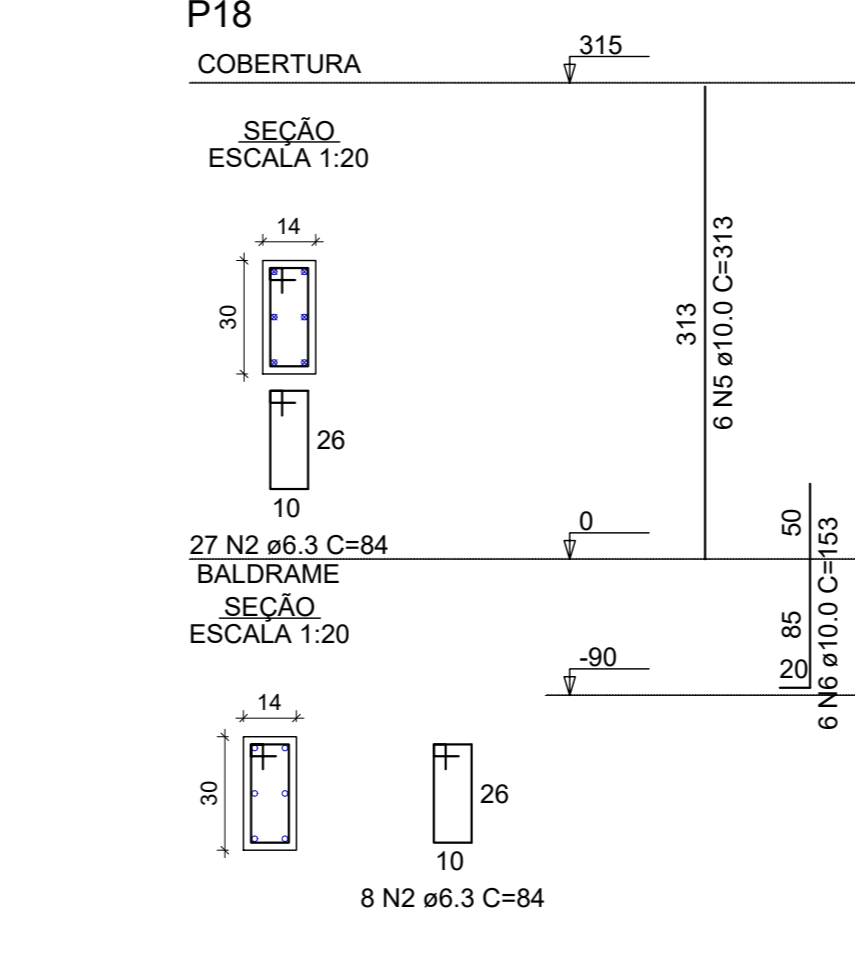
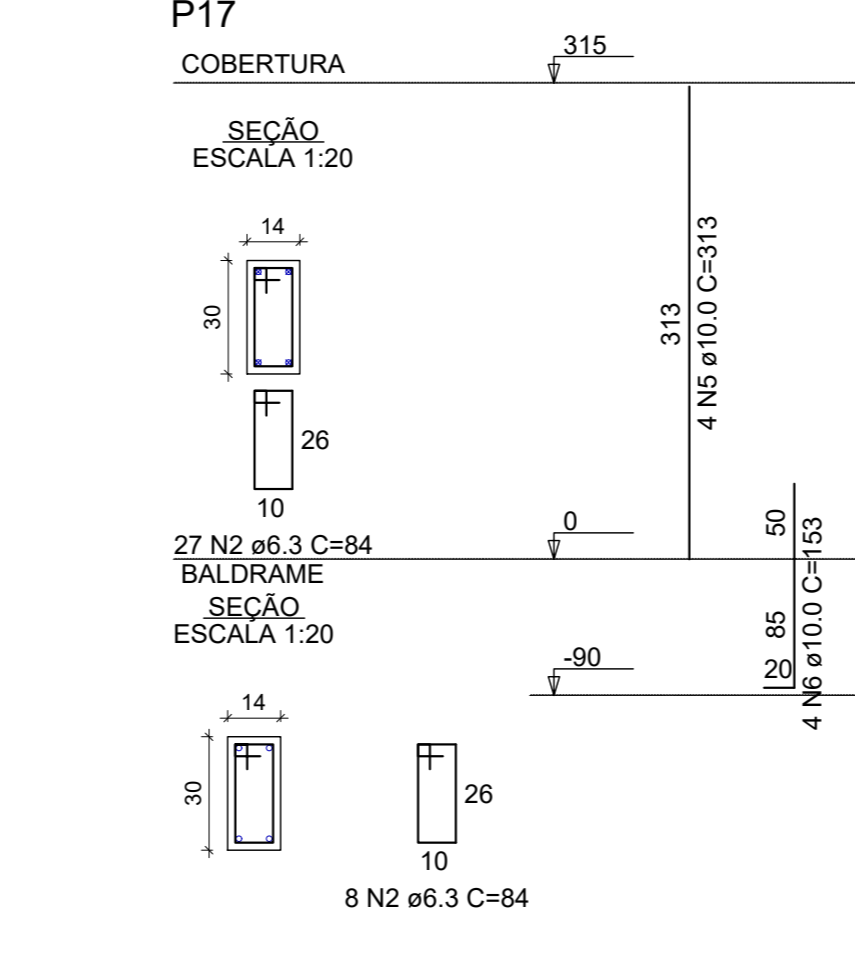
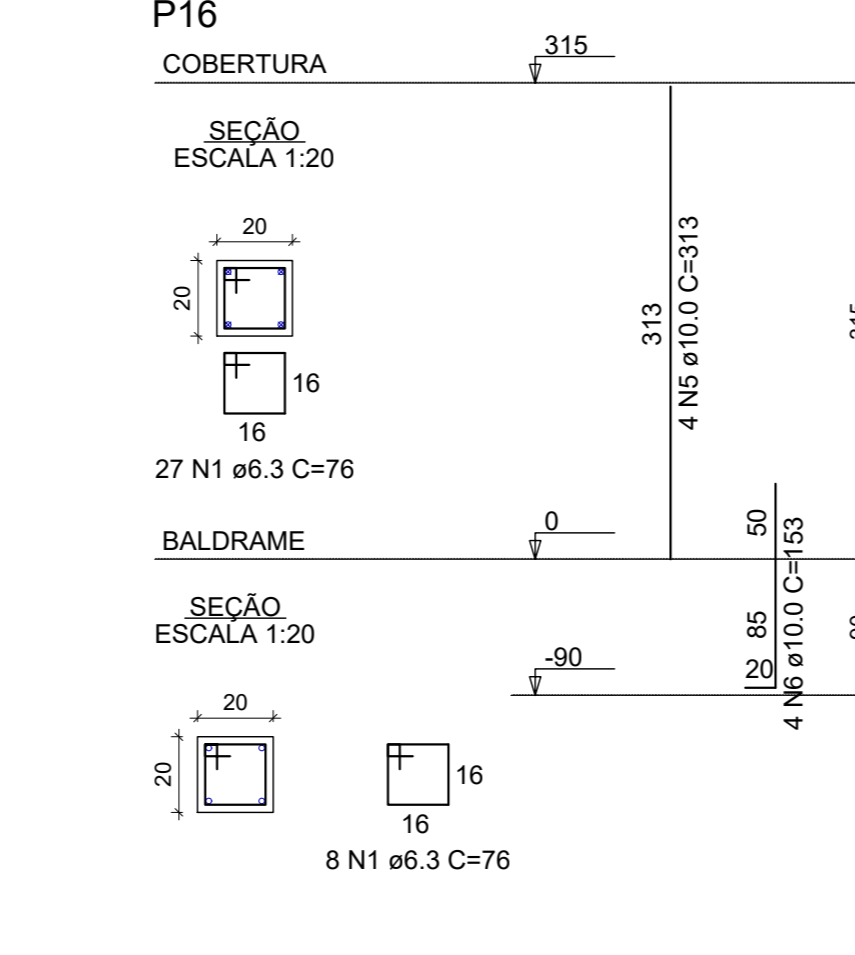
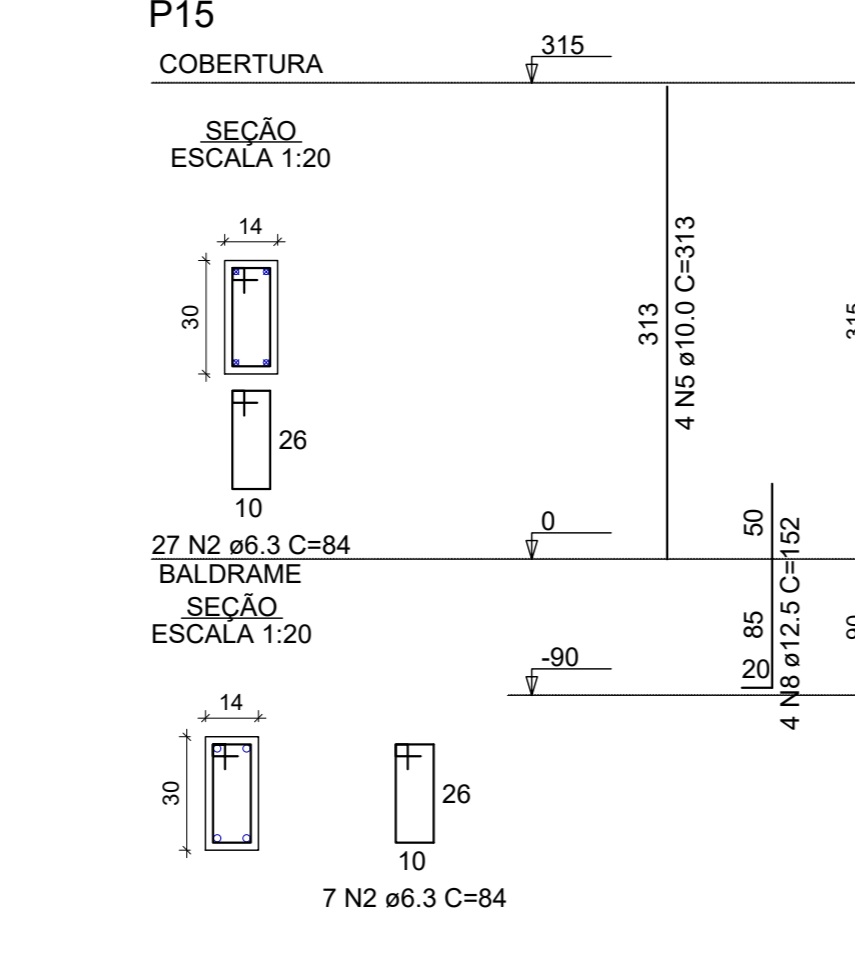
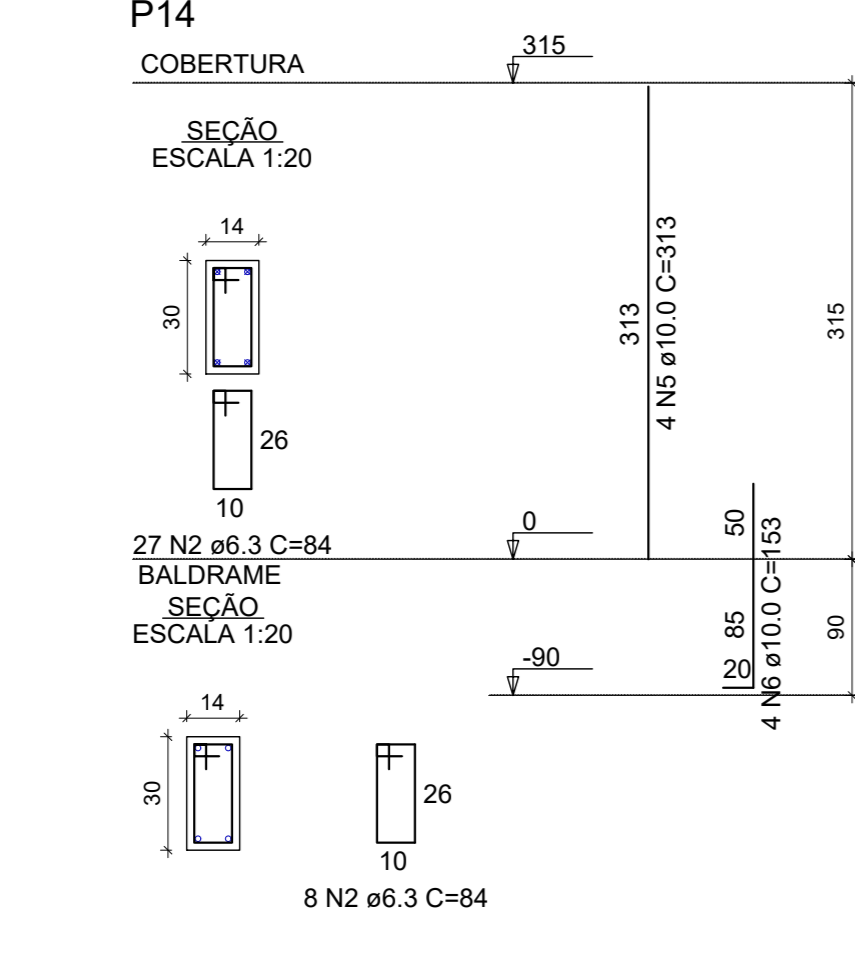
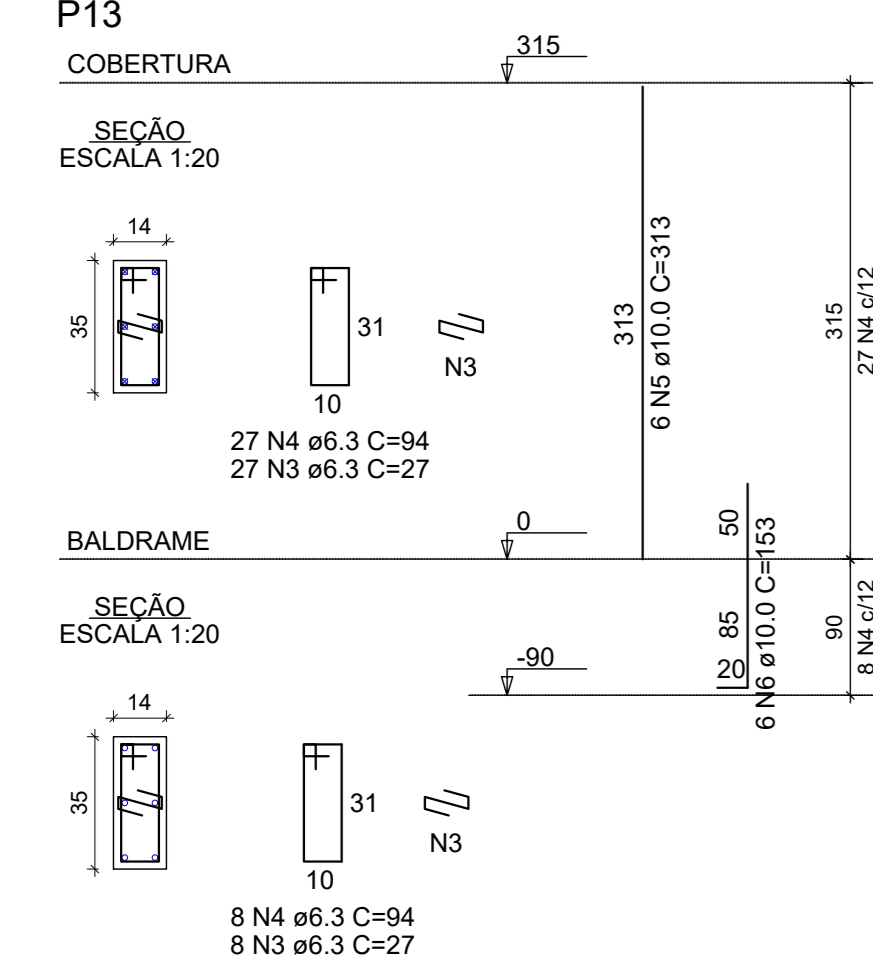
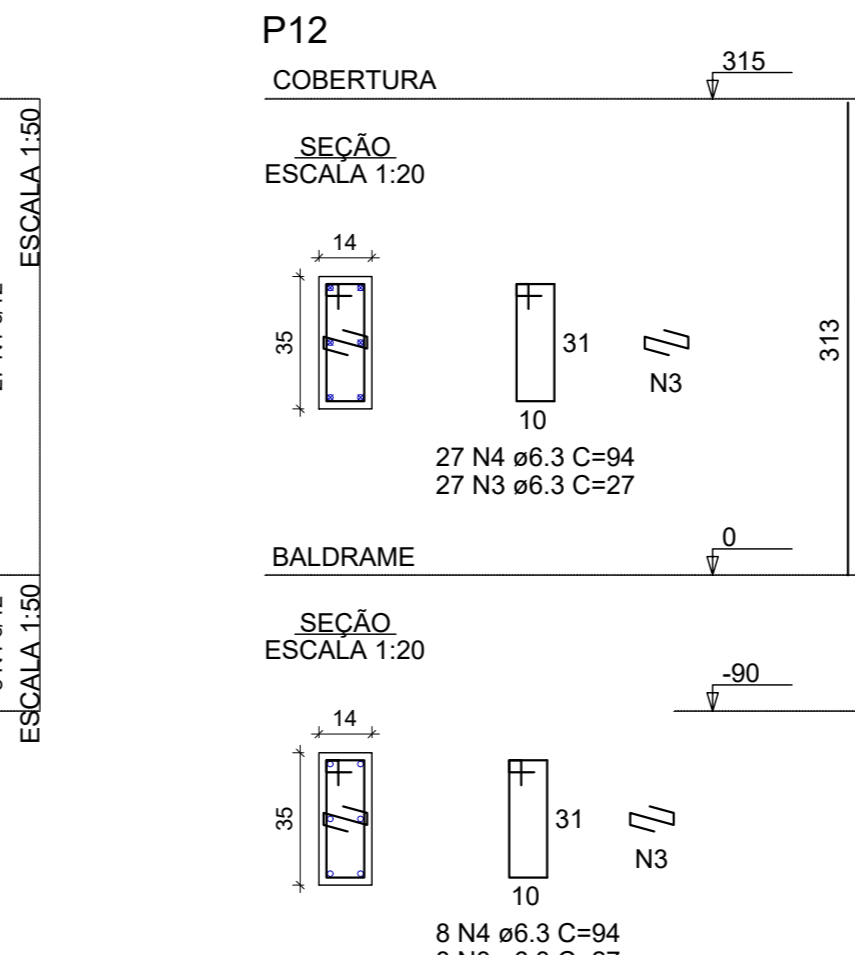
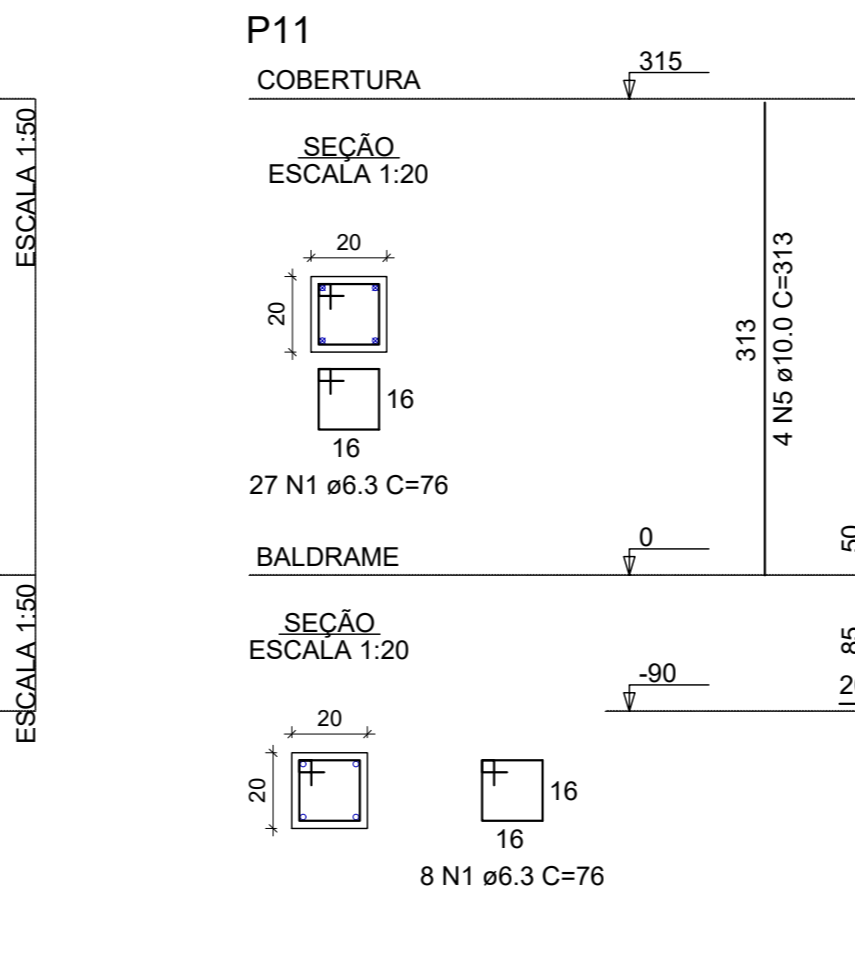
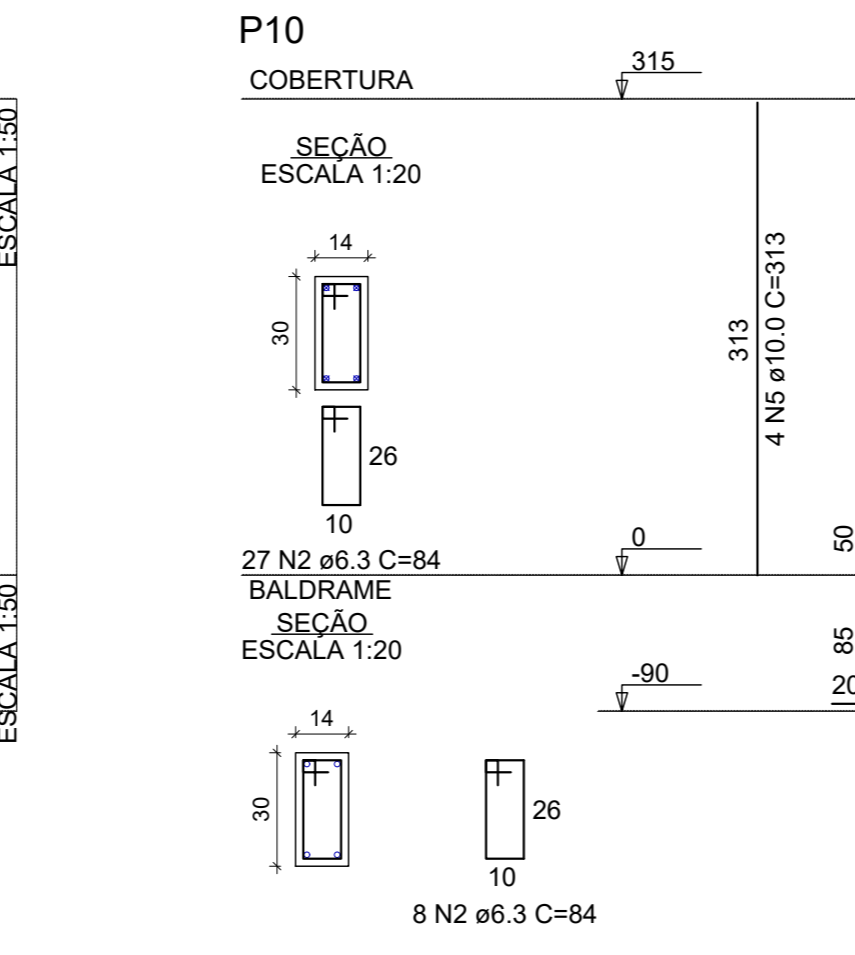
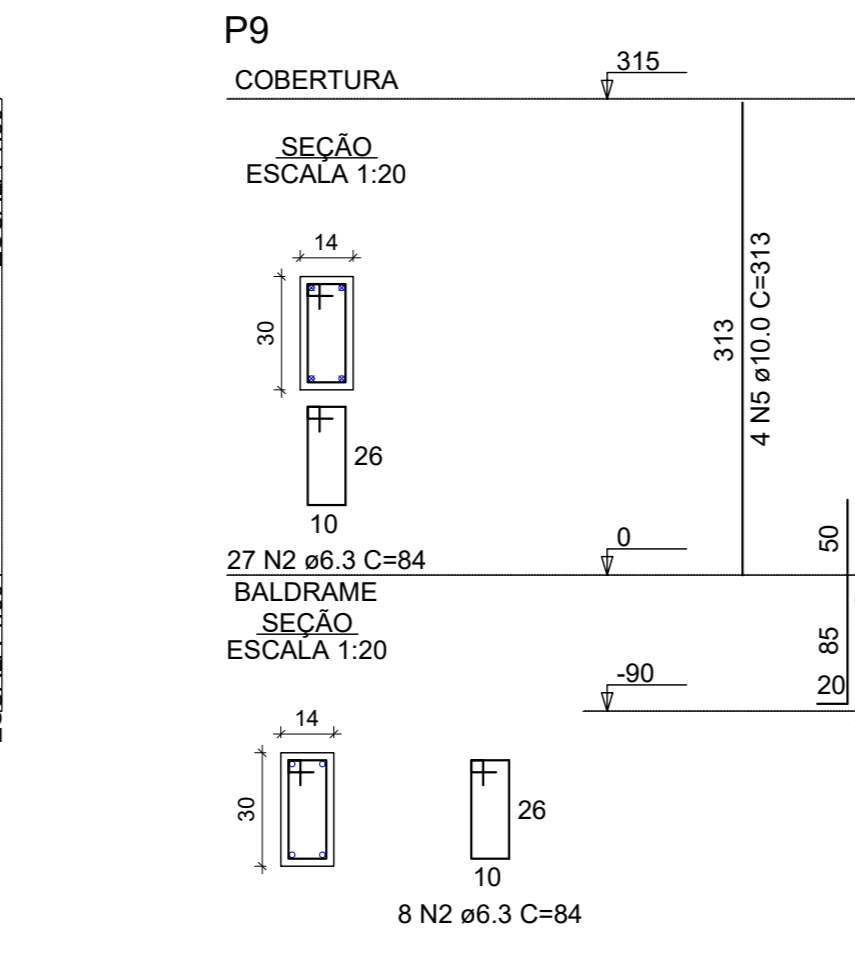
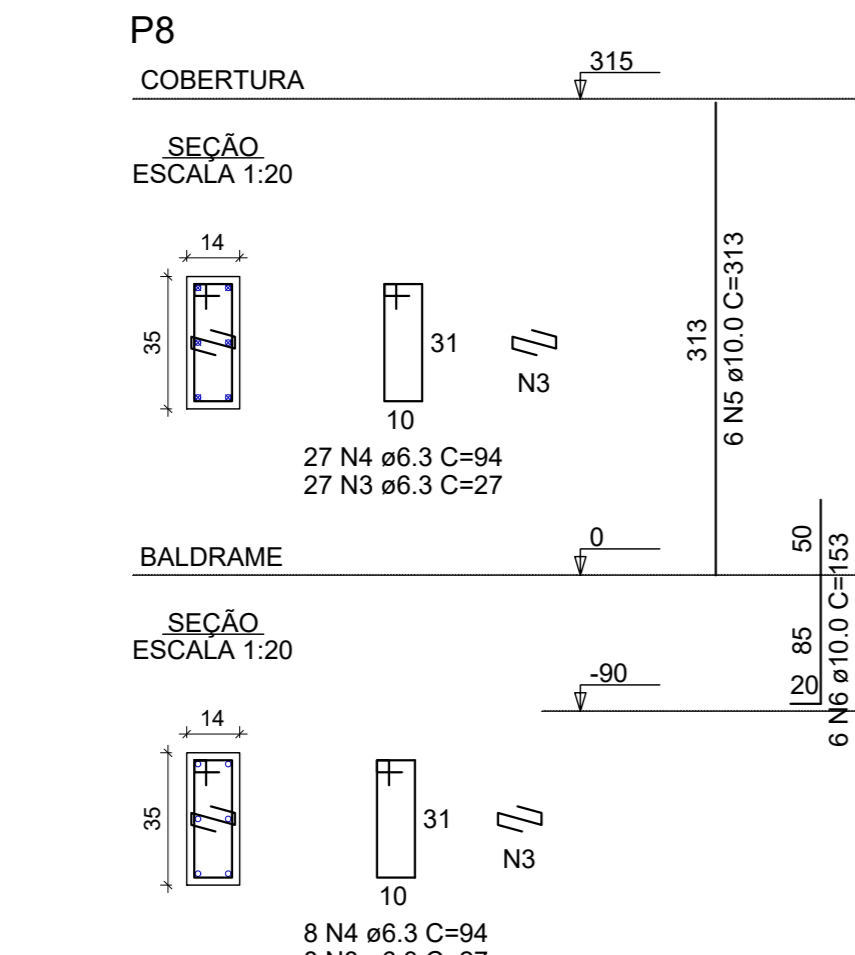
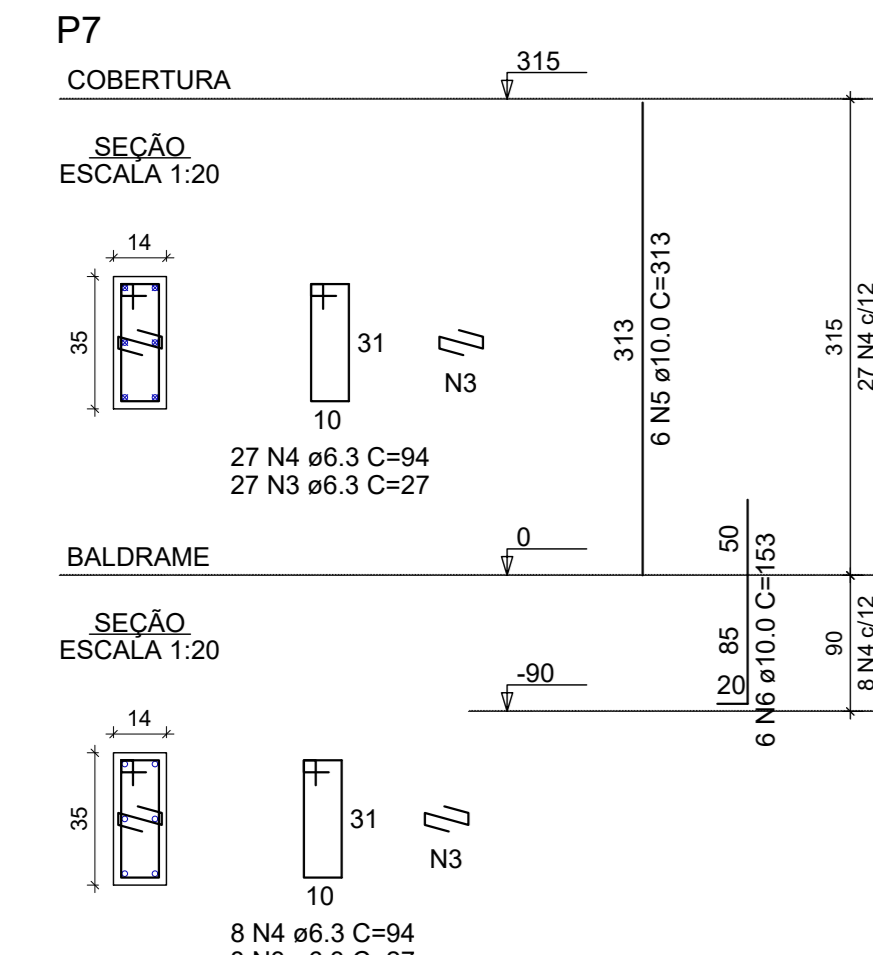
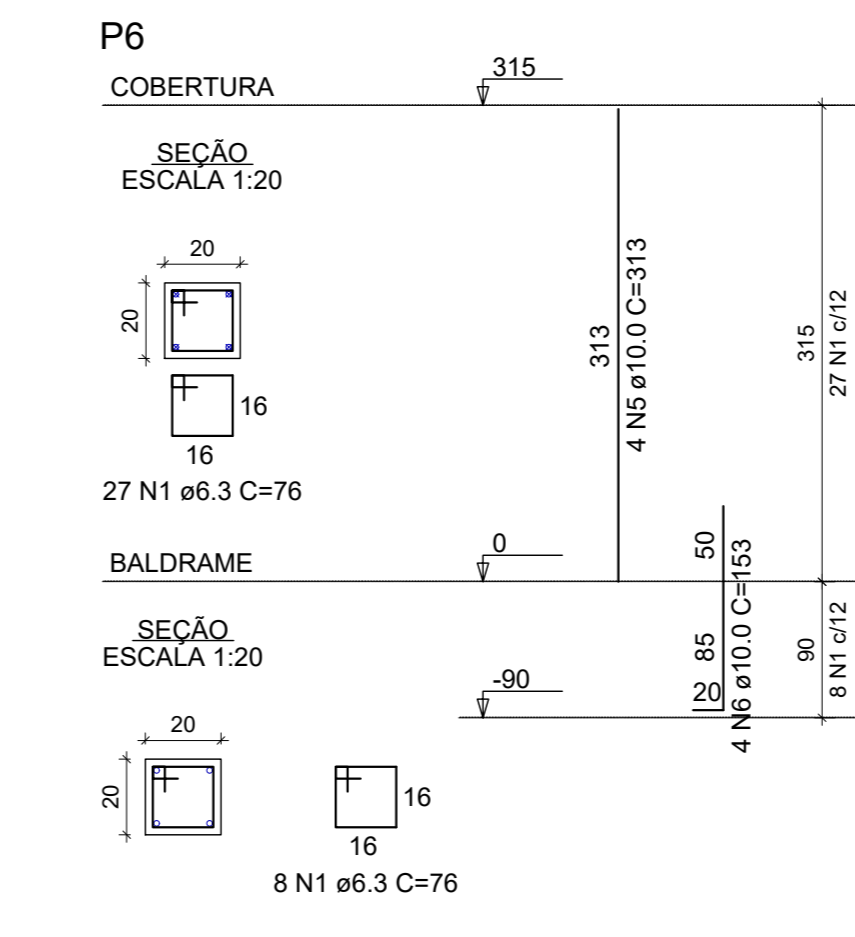
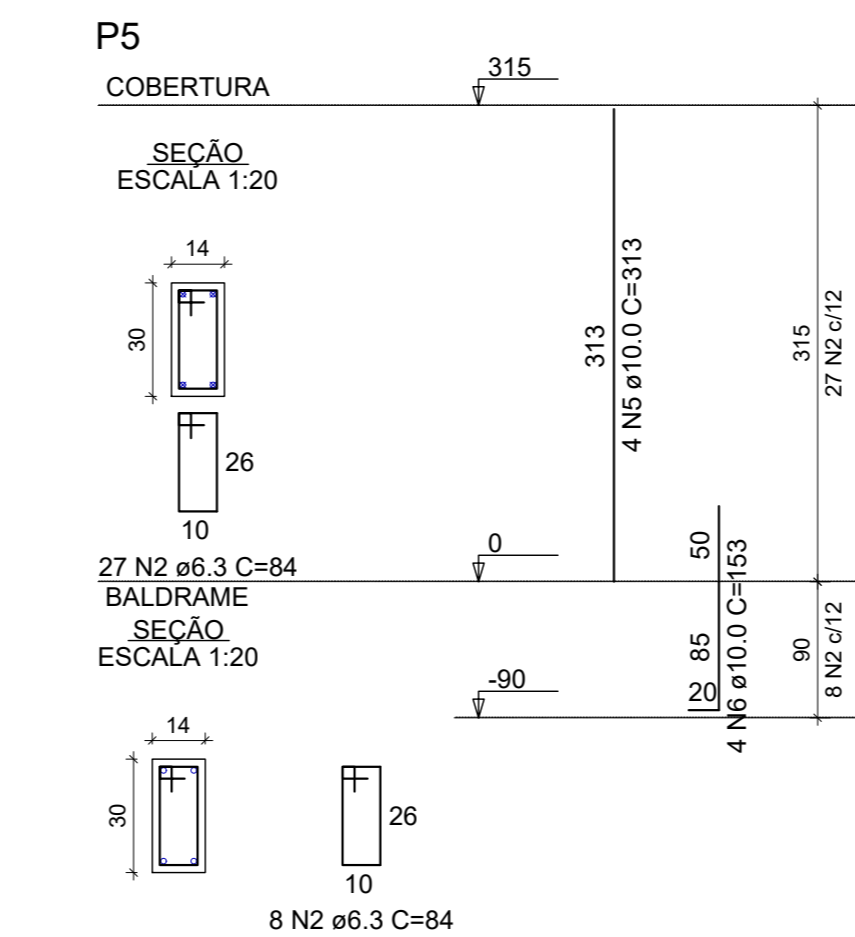
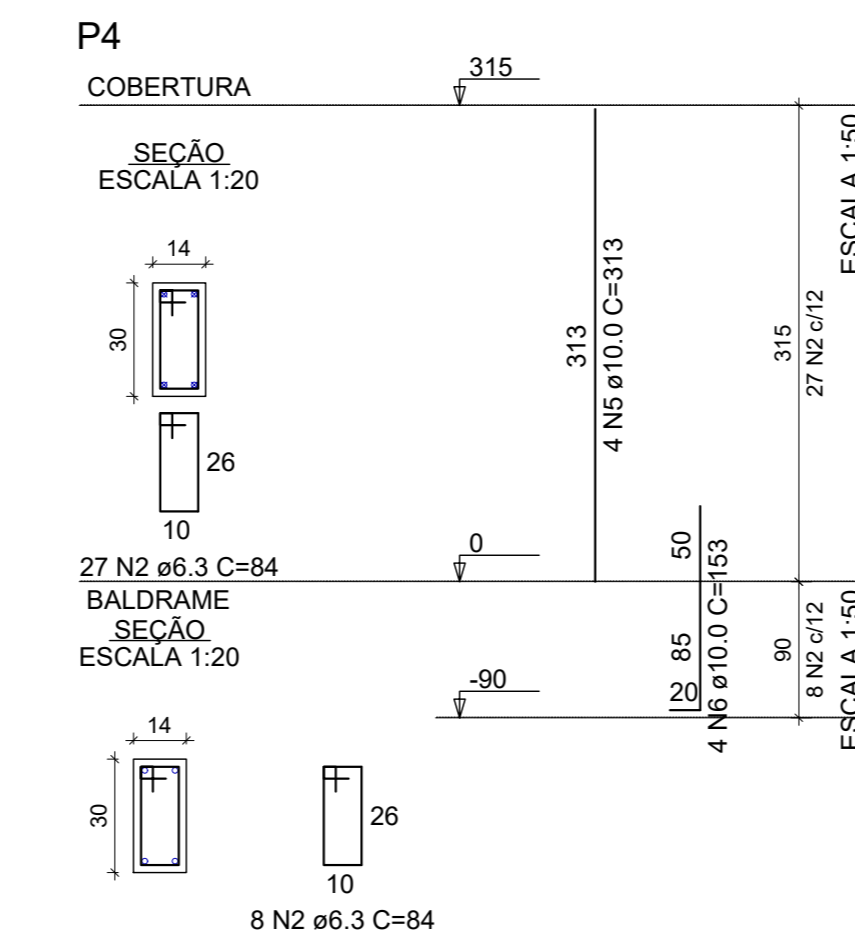
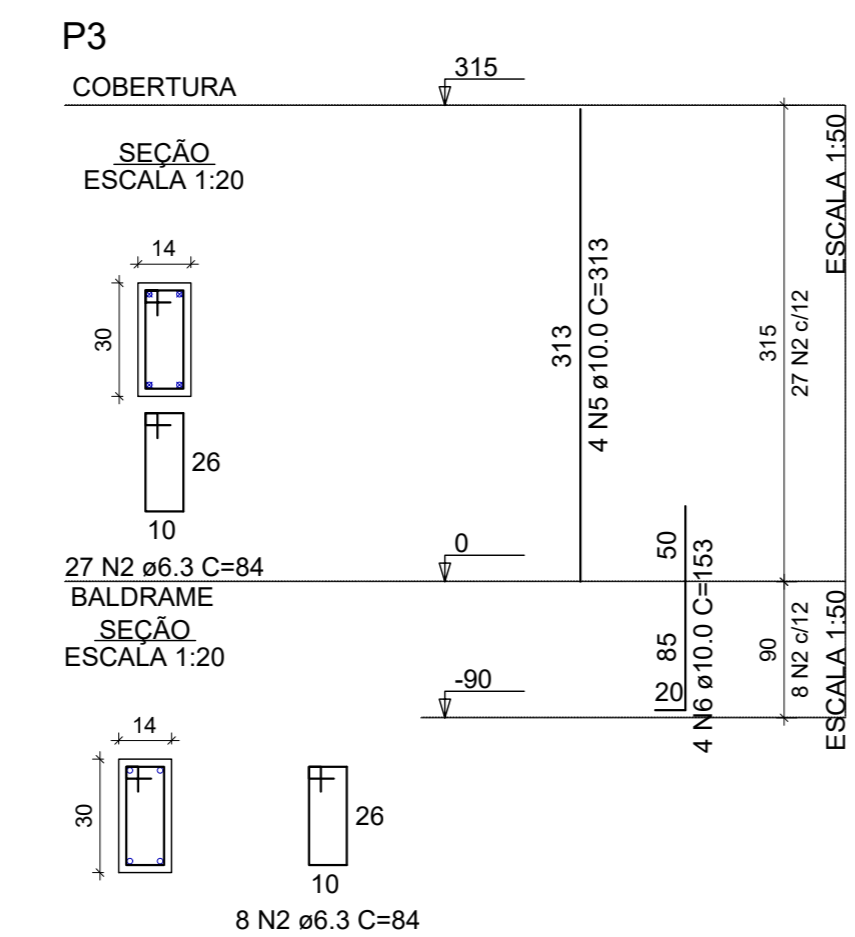
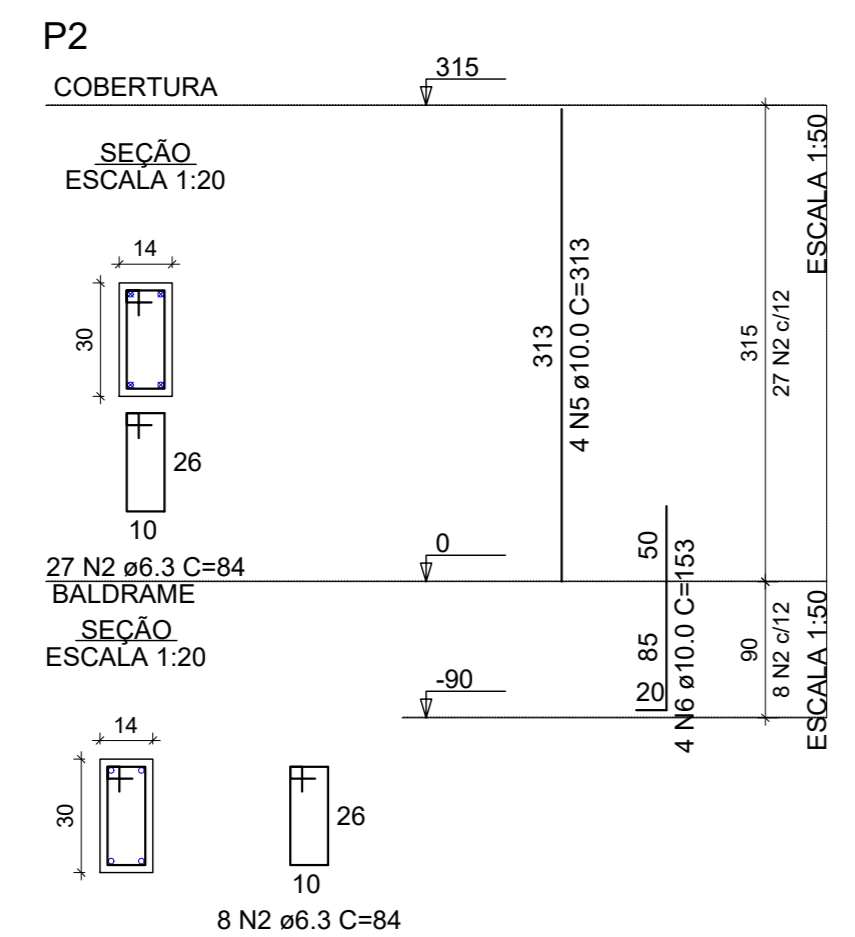
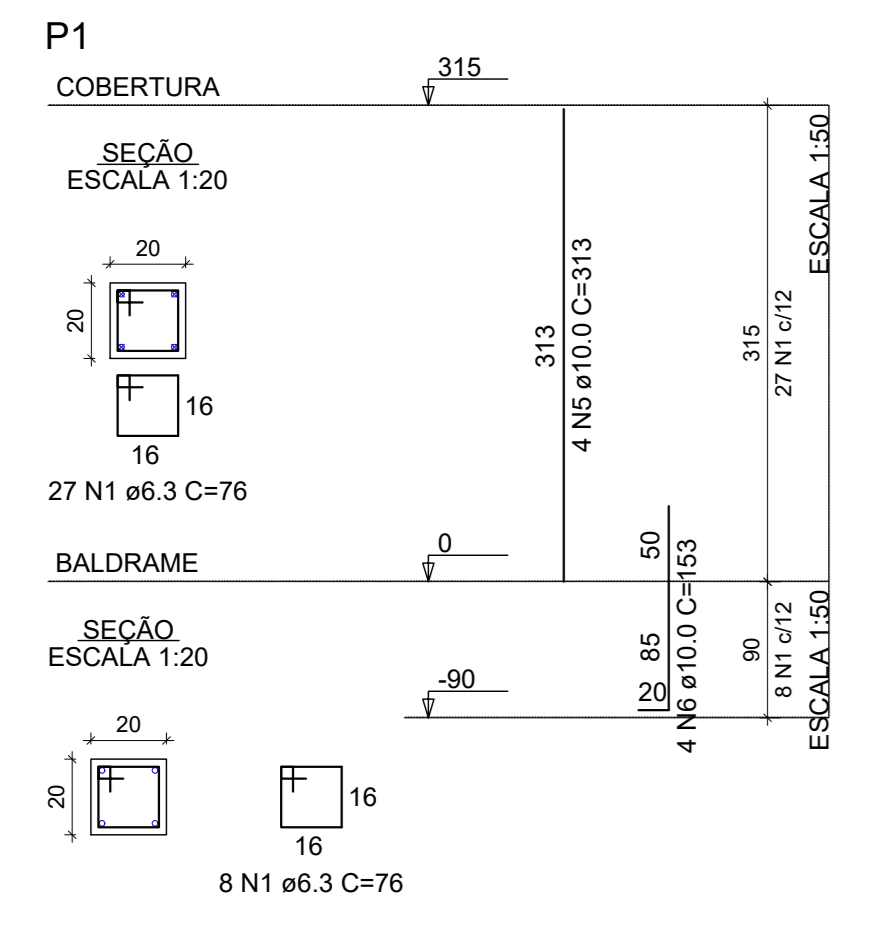


PROJETO ESTRUTURAL - CONSTRUÇÃO DA SEDE ADMINISTRATIVA DO HORTO ESCALA INDICADA



RELAÇÃO DO AÇO

P1-L2	P1-L1	P2-L2
P2-L1	P3-L2	P3-L1
P4-L2	P4-L1	P5-L2
P6-L2	P6-L1	P7-L2
P7-L1	P8-L2	P8-L1
P9-L1	P10-L1	P11-L2
P10-L2	P12-L2	P12-L1
P13-L2	P13-L1	P14-L2
P14-L1	P15-L2	P15-L1
P16-L2	P16-L1	P17-L2
P17-L1	P18-L2	P18-L1
P19-L2	P19-L1	P20-L2
P20-L1	P21-L2	P21-L1
P22-L2	P22-L1	P23-L2
P23-L1	P24-L2	P24-L1
P25-L2	P25-L1	P26-L2
P26-L1		

CAÇO	N	DIAM (mm)	QUANT	C.UNIT (cm)	C.TOTAL (cm)
CA50	1	6.3	140	76	10640
	2	6.3	629	84	52836
	3	6.3	140	27	3780
	4	6.3	140	84	13180
	5	10.0	114	153	36662
	6	10.0	110	153	16830
	7	10.0	2	101	202
	8	12.5	4	152	608

RESUMO DO AÇO

CAÇO	DIAM (mm)	C.TOTAL (m)	PESO + 10% (kg)
CA50	6.3	804.2	216.5
	10.0	527.1	357.5
	12.5	6.1	6.4

PESO TOTAL (kg)  
CA50 580.4

Volume de concreto (C-25) = 3.95 m³  
Área de forma = 92.99 m²

PROJETO	CONSTRUÇÃO DA SEDE ADMINISTRATIVA DO PARQUE NATURAL MUNICIPAL DE POUSO ALEGRE	DISCIPLINA	ESTRUTURA
ENDEREÇO	AVENIDA WALDEMAR AZEVEDO JUNQUEIRA POUSO ALEGRE - MINAS GERAIS	FASE DO PROJETO	EXECUTIVO
ARQUIVO	DETALHAMENTO DOS PILARES	FOLHA Nº	05/08
DATA INICIAL	28/04/2022	ESCALA	INDICADA
REVISÃO	01	REVISOR	R00
ARQUIVO	DAC-PM-PA-PM-PE-EST-R00.DWG		

Prefeitura Municipal de Pouso Alegre

DAC Engenharia

Rua Miguel Viana, nº 81, Sala 12  
Bairro Monte Cristo  
CEP: 37500-000 - Itajubá / MG  
Tel: (35) 3623-3720  
www.dacengenharia.com.br

PROJETO	OPERAÇÃO DE PROJETOS	ENGR. CIVIL
COORDENADOR DE PROJETOS	ALBINO CASTANHO FERREIRA	CREA Nº471310
RESPONSÁVEL TÉCNICO	ENGR. CIVIL WILLIAM BARCEL LARI	
ENGR. CIVIL TÁLIA C. BARBOSA	CREA Nº21973405	
PROJETO	ENGR. CIVIL WILLIAM BARCEL LARI	
REVISÃO	ENGR. CIVIL TÁLIA C. BARBOSA	
ARQUIVO	ENGR. CIVIL TÁLIA C. BARBOSA	