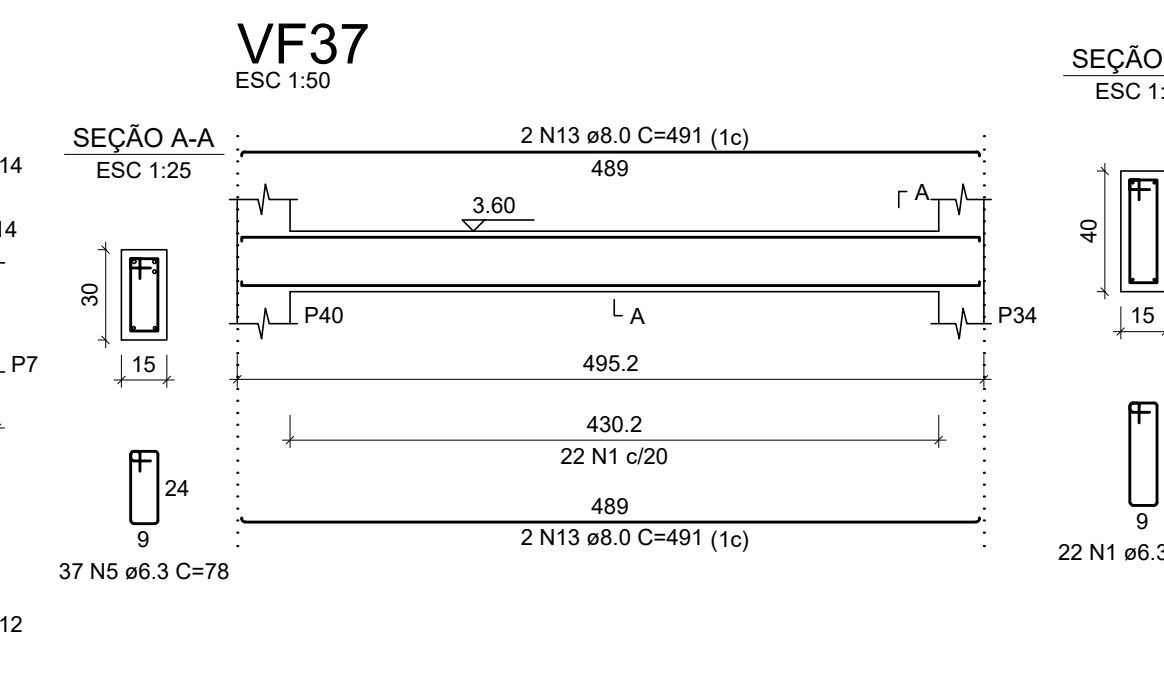
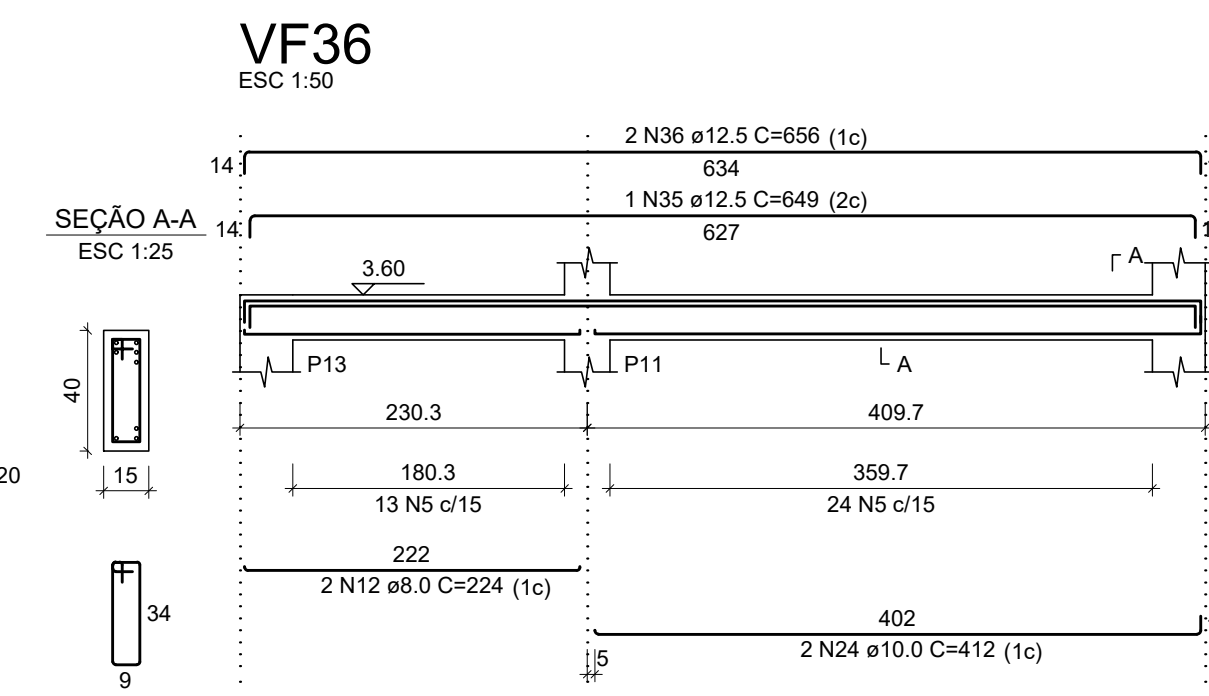
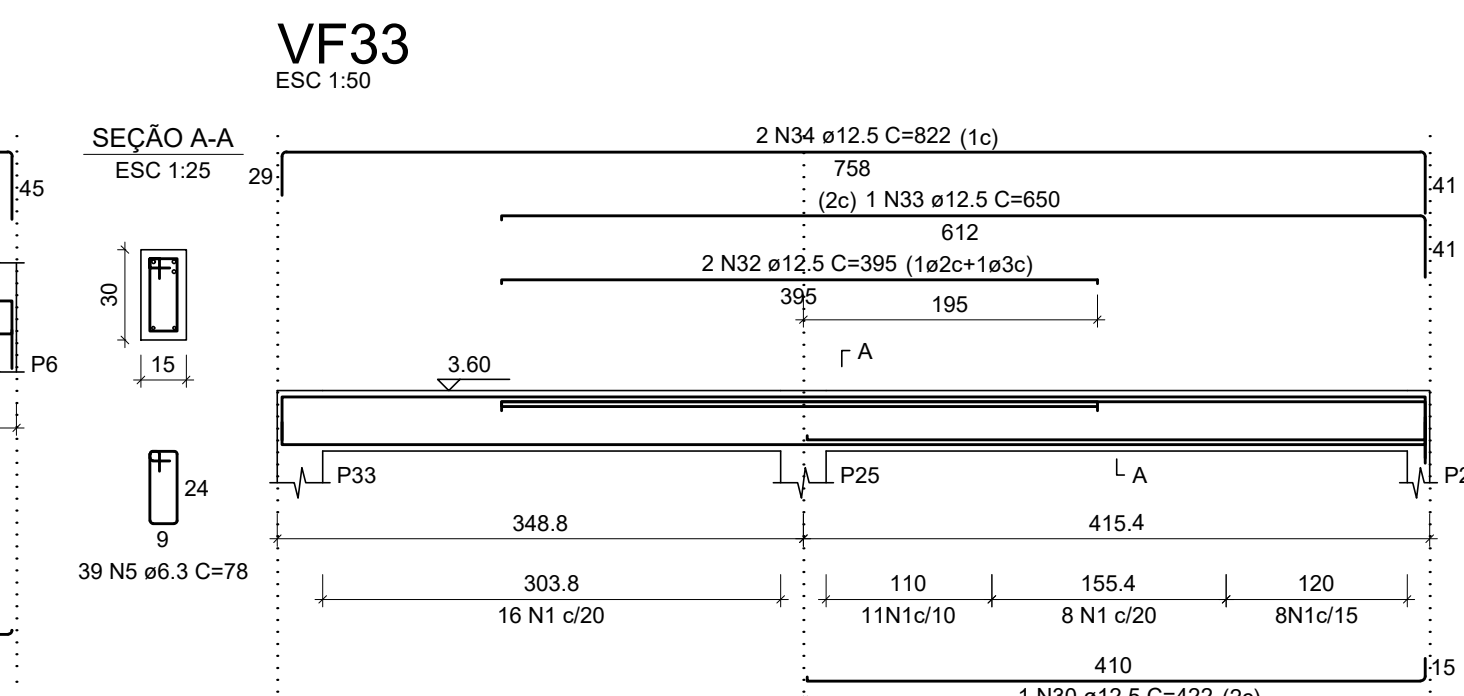
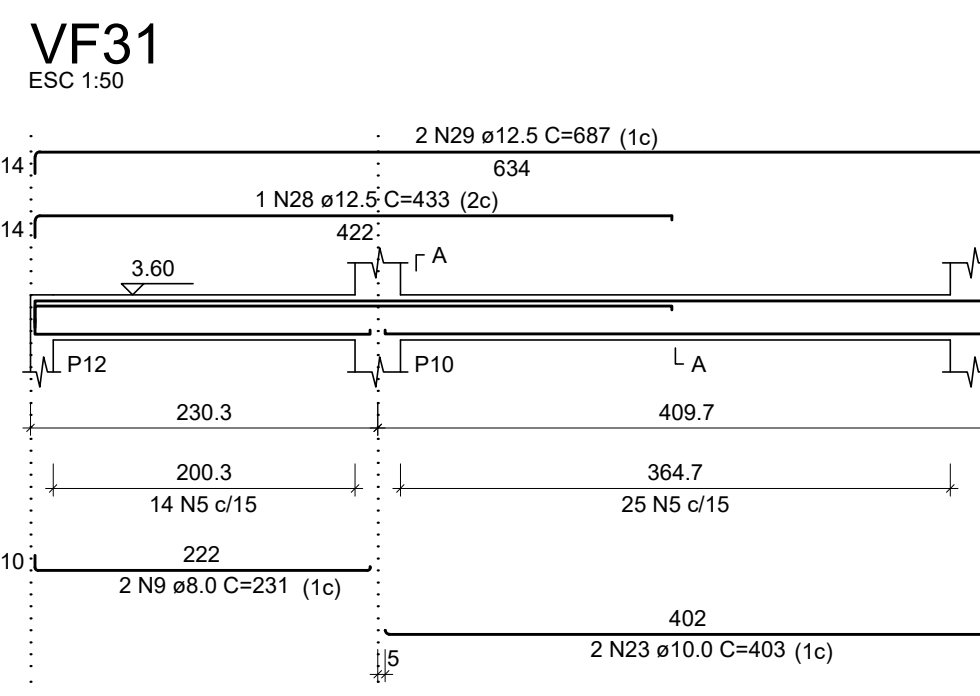


RELAÇÃO DO AÇO

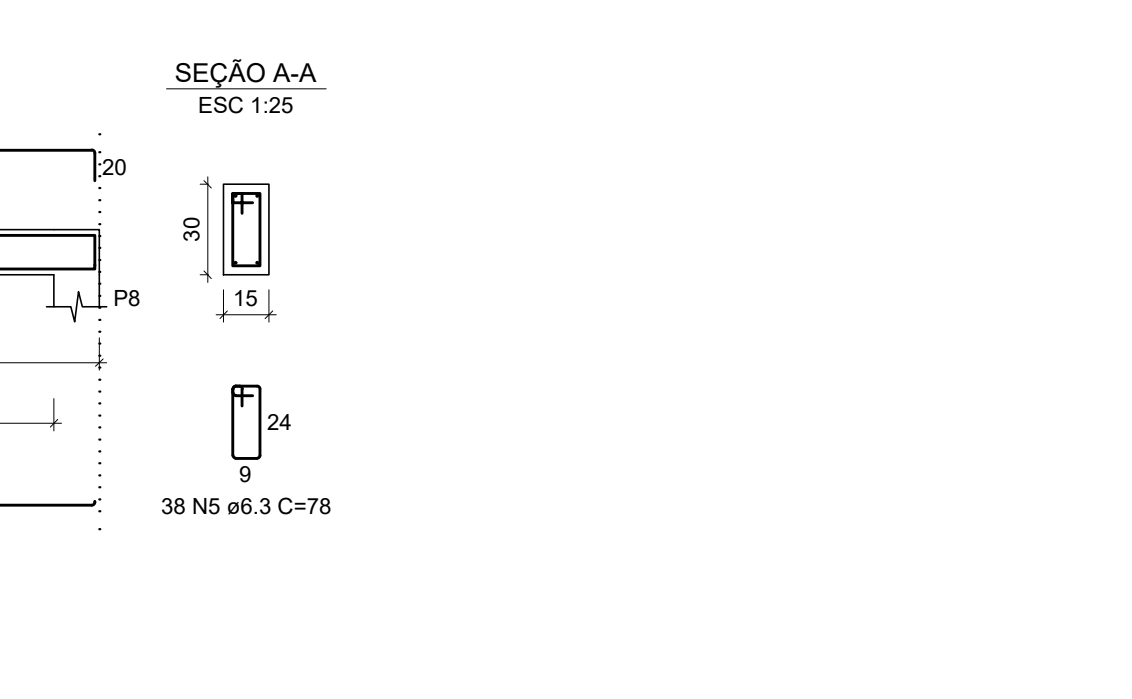
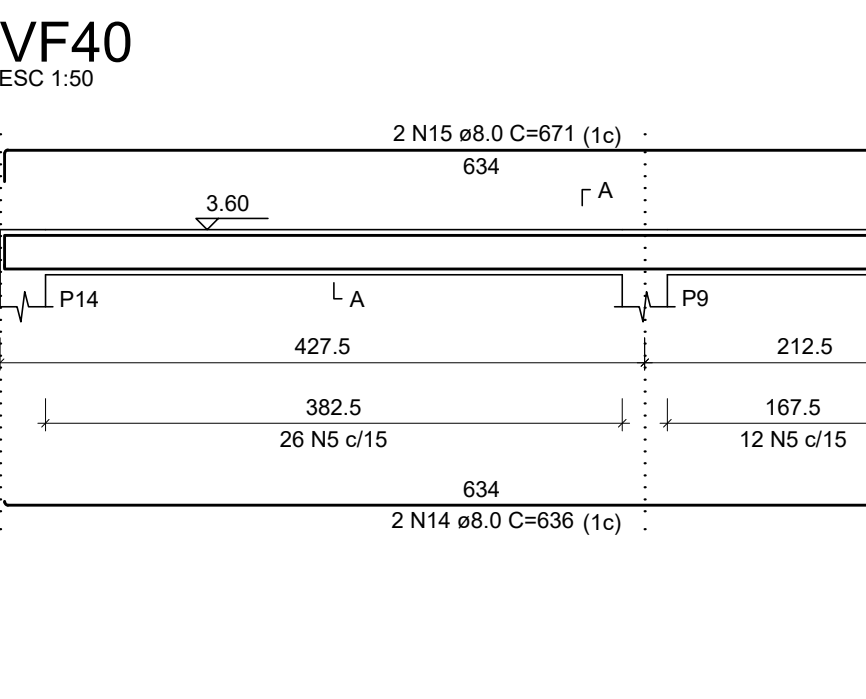
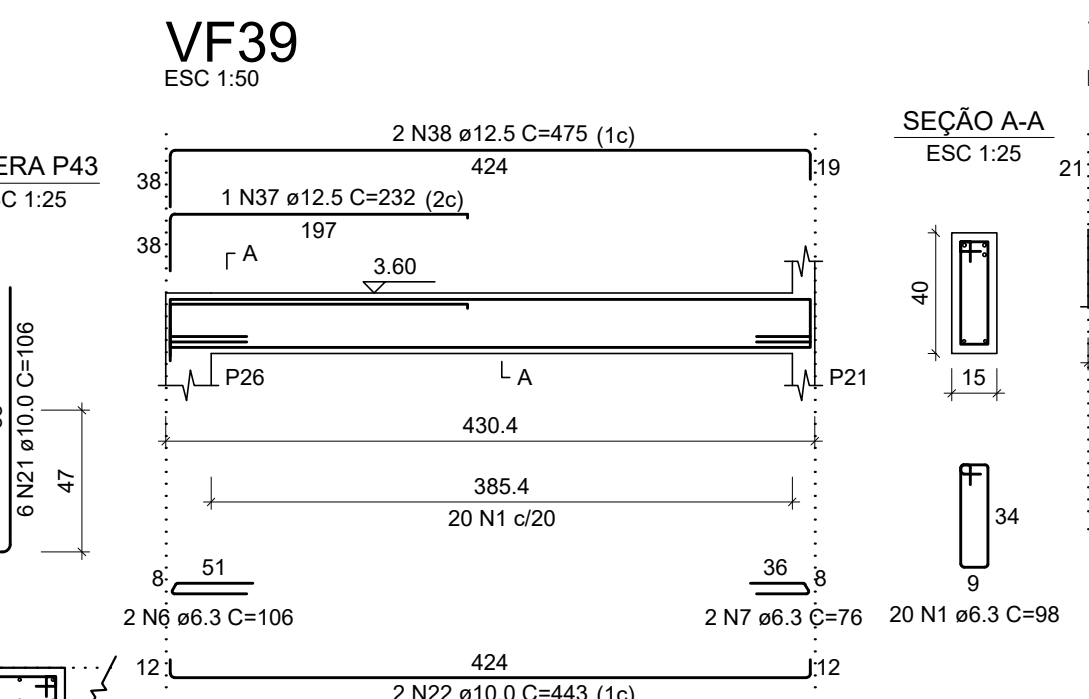
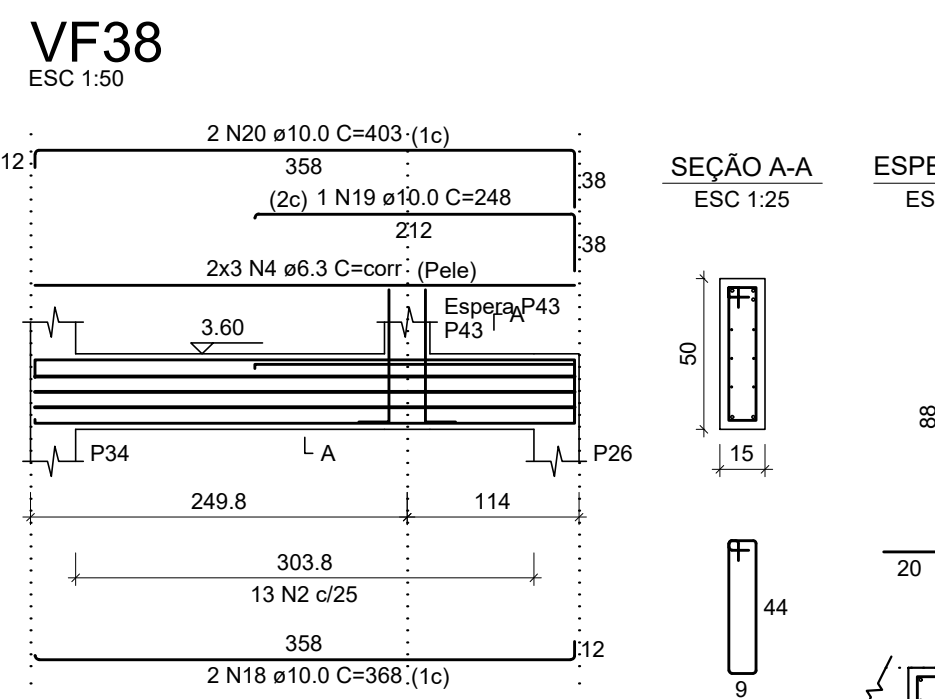
AÇO	N	DIAM (mm)	QUANT	C.UNIT (cm)	C.TOTAL (cm)
CA50	1	6.3	141	98	13818
	2	6.3	47	118	5546
	3	6.3	6	corr	3342
	4	6.3	12	corr	4296
	5	6.3	122	4	78
	6	6.3	12	106	424
	7	6.3	5	76	380
	8	8.0	2	604	1208
	9	8.0	2	224	462
	10	8.0	2	203	406
	11	8.0	2	244	488
	12	8.0	2	224	462
	13	8.0	4	491	1964
	14	8.0	2	636	1272
	15	8.0	2	671	1342
	16	10.0	2	555	1110
	17	10.0	2	588	1176
	18	10.0	4	368	1472
	19	10.0	2	443	1772
	20	10.0	4	403	1612
	21	10.0	12	106	1272
	22	10.0	4	443	1772
	23	10.0	2	403	806
	24	10.0	2	412	824
	25	12.5	2	578	1156
	26	12.5	1	232	232
	27	12.5	2	475	950
	28	12.5	1	433	433
	29	12.5	2	687	1374
	30	12.5	1	422	422
	31	12.5	2	782	1564
	32	12.5	2	595	790
	33	12.5	2	650	650
	34	12.5	2	822	1644
	35	12.5	1	649	649
	36	12.5	2	656	1312
	37	12.5	1	232	232
	38	12.5	2	475	950



RESUMO DO AÇO

AÇO	DIAM (mm)	C.TOTAL (m)	QUANT + 10% (Barras)	PESO + 10% (kg)
CA50	6.3	373.2	35	100.5
	8.0	75.9	7	32.9
	10.0	105.4	10	71.5
	12.5	123.6	12	131
PESO TOTAL (kg)				
CA50				335.8

Volume de concreto (C-25) = 3.56 m³
Área de forma = 56.57 m²



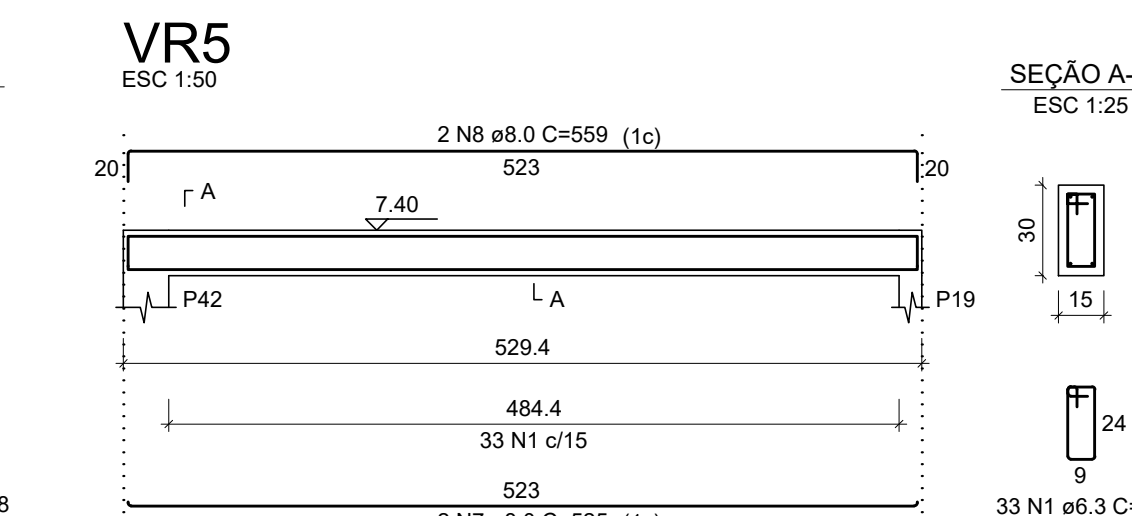
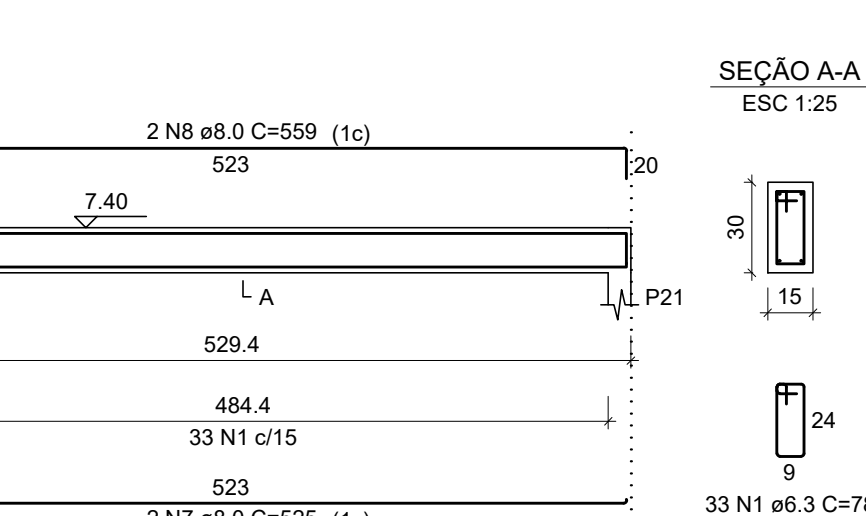
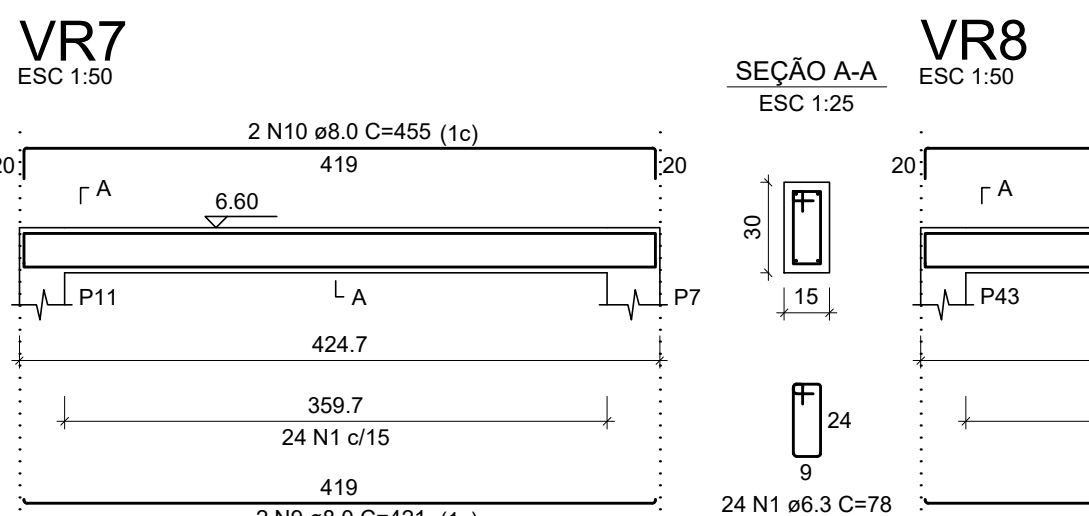
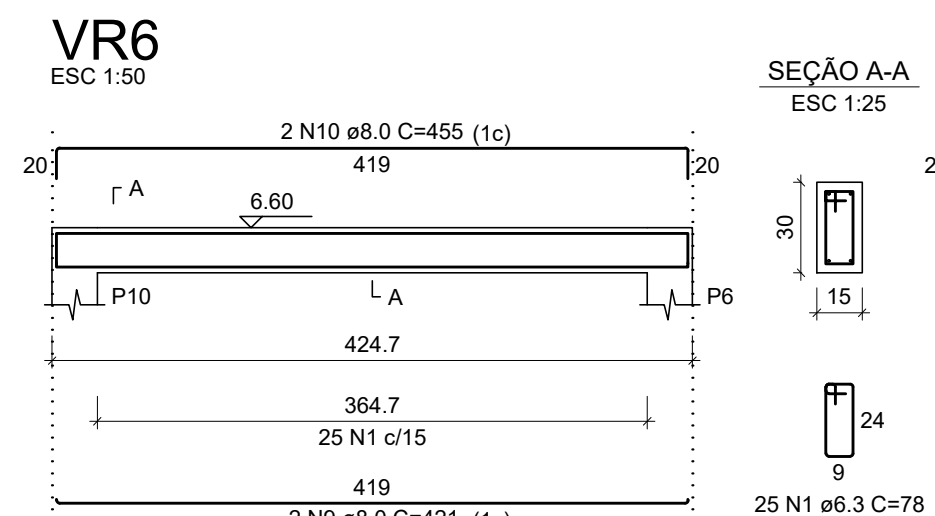
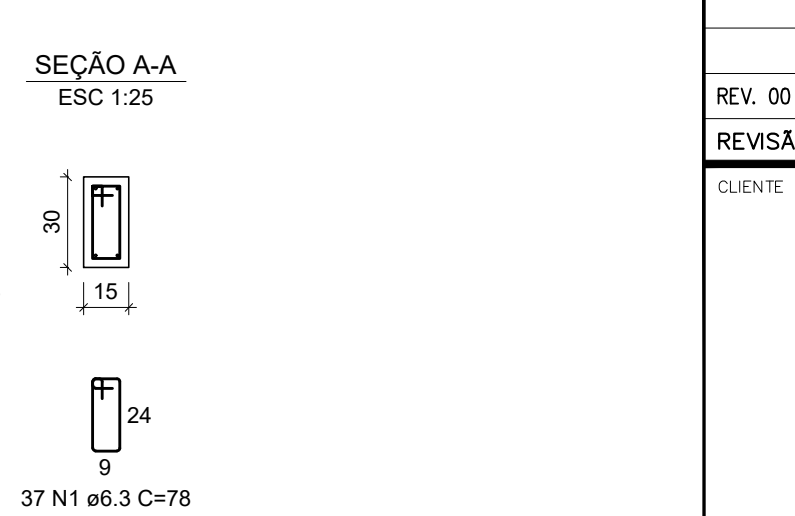
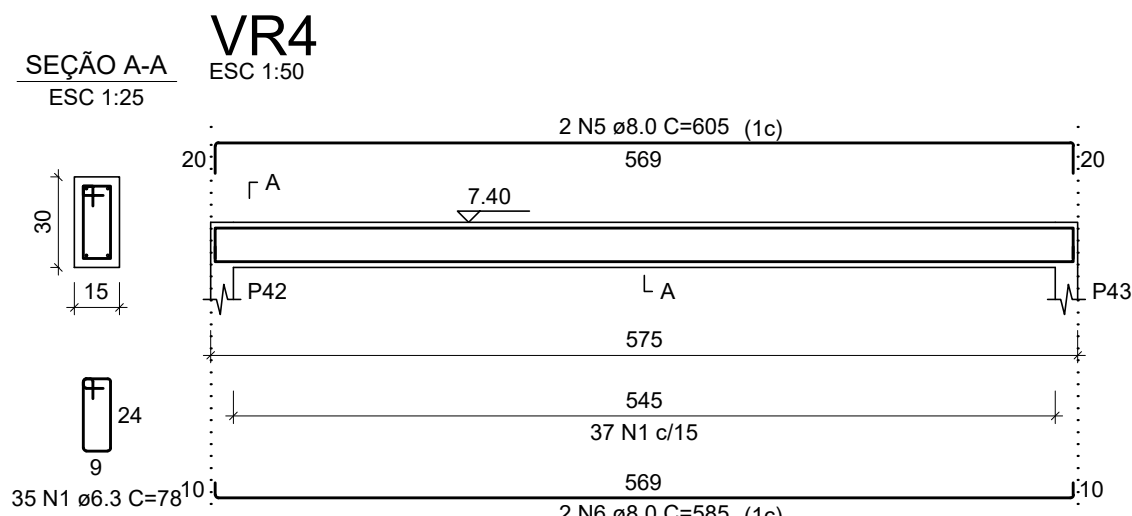
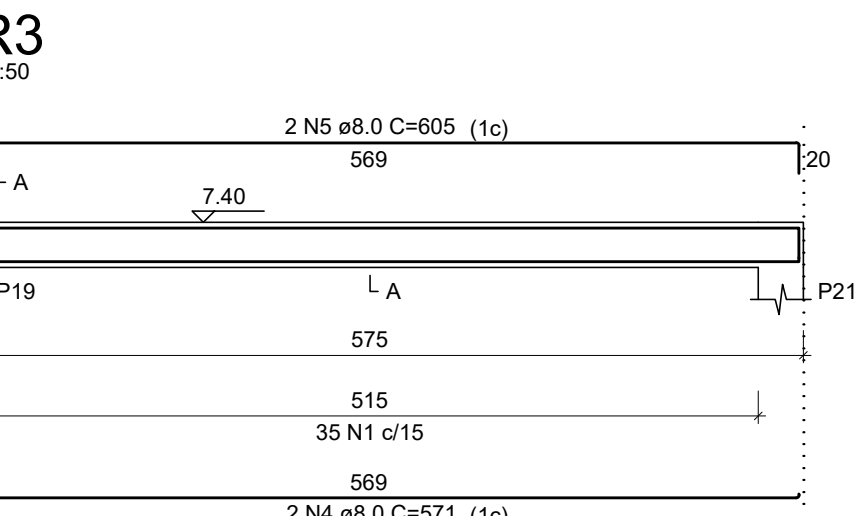
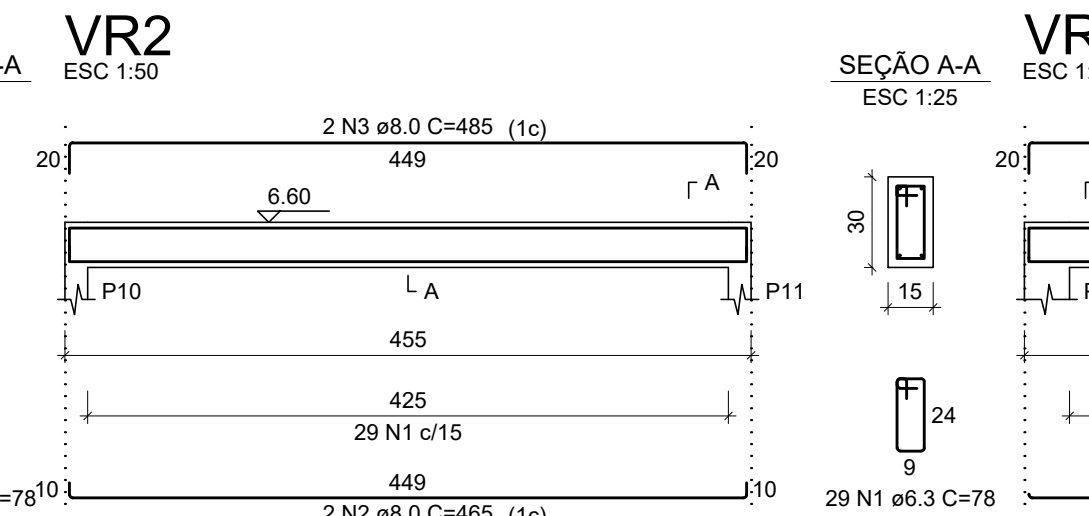
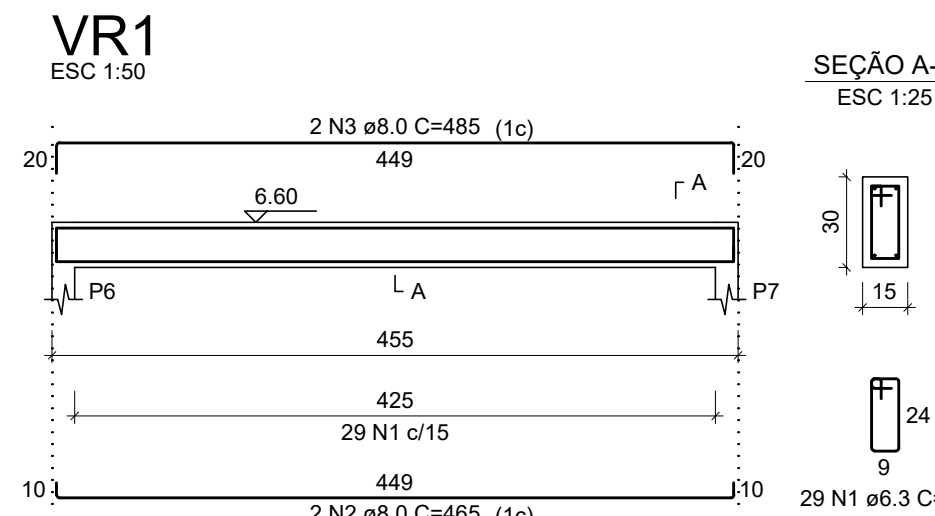
RELAÇÃO DO AÇO

AÇO	N	DIAM (mm)	QUANT	C.UNIT (cm)	C.TOTAL (cm)
CA50	1	6.3	245	78	19110
	2	8.0	4	465	1860
	3	8.0	4	465	1860
	4	8.0	2	571	1142
	5	8.0	4	605	2420
	6	8.0	4	585	1170
	7	8.0	4	525	2100
	8	8.0	4	559	2236
	9	8.0	4	421	1684
	10	8.0	4	455	1820

RESUMO DO AÇO

AÇO	DIAM (mm)	C.TOTAL (m)	QUANT + 10% (Barras)	PESO + 10% (kg)
CA50	6.3	191.1	18	51.4
	8.0	163.7	16	71.1
PESO TOTAL (kg)				
CA50				122.5

Volume de concreto (C-25) = 1.79 m³
Área de forma = 29.76 m²



Detalhamento das Vigas
escala 1:50

REV. 00	16/08/19	EMISSÃO INICIAL	DAC
REVISÃO	DATA	DESCRIÇÃO	RESP.
CLIENTE			
		Prefeitura Municipal de Pouso Alegre	
		GERÊNCIA DE PROJETOS DENIS DE SOUZA SILVA CREA: MG-127.216/D	
Rua Miguel Vianna, nº 81, Sala 12 Bairro Morro Chic CEP: 37500-080 - Itajubá / MG Tel: (35) 3623-5720 www.dacengenharia.com.br		COORDENAÇÃO DE PROJETOS ALOISIO CAETANO FERREIRA CREA: MG-97.132/D	
PROJETO FLÁVIA CRISTINA BARBOSA		RESPONSÁVEL TÉCNICO ENC. CIVIL FLÁVIA C. BARBOSA CREA: MG-187.842/D	
DESENHO WILLIAM BARADEL LARI			
EMPREENDIMENTO REFORMA E AMPLIAÇÃO DA PEM MONSENHOR MENDONÇA			
ENDEREÇO PRAÇA JOÃO PINHEIRO – BAIRRO CENTRO POUSO ALEGRE – MINAS GERAIS		DISCIPLINA ESTRUTURAL	
ASSUNTO DETALHAMENTO ARMAÇÃO DAS VIGAS – NÍVEL SUPERIOR		FASE DO PROJETO EXECUTIVO	
		FOLHA Nº. 16/17	
DATA INICIAL	ESCALA	REVISÃO	ARQUIVO
16/08/2019	1:50	ROO	DAC-FMPA-MSR-PE-EST-ROO.DWG