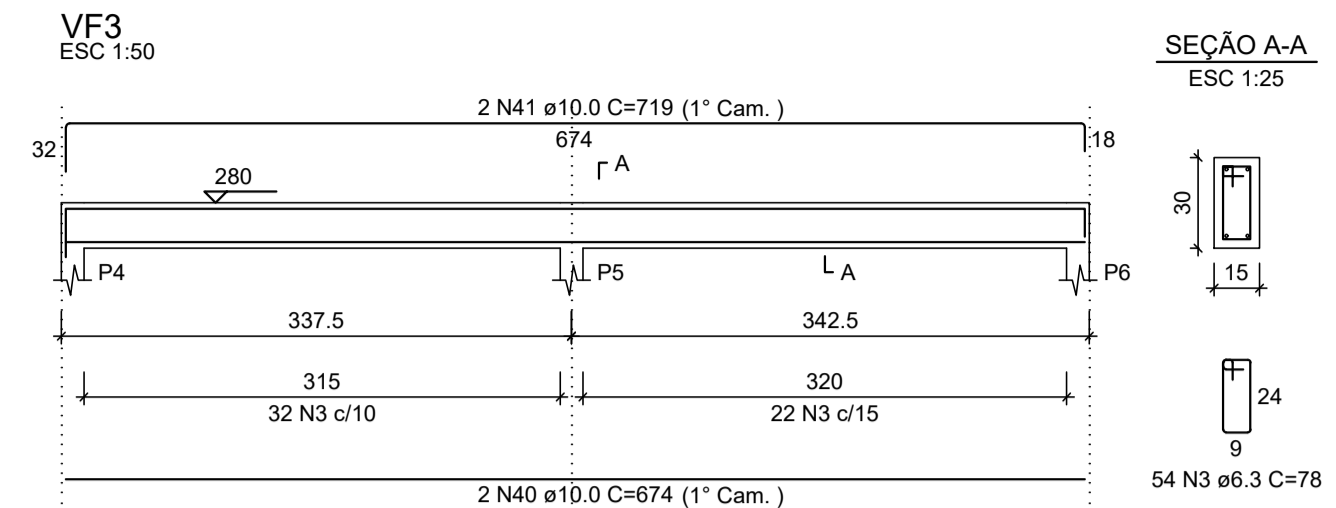
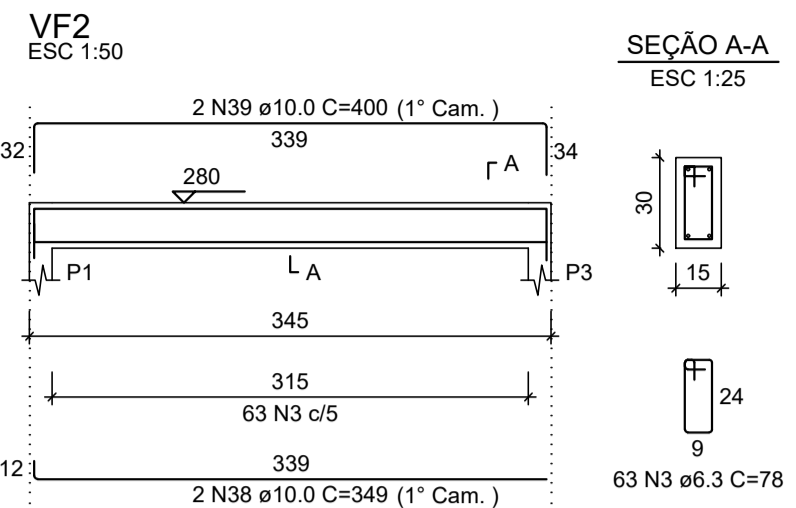
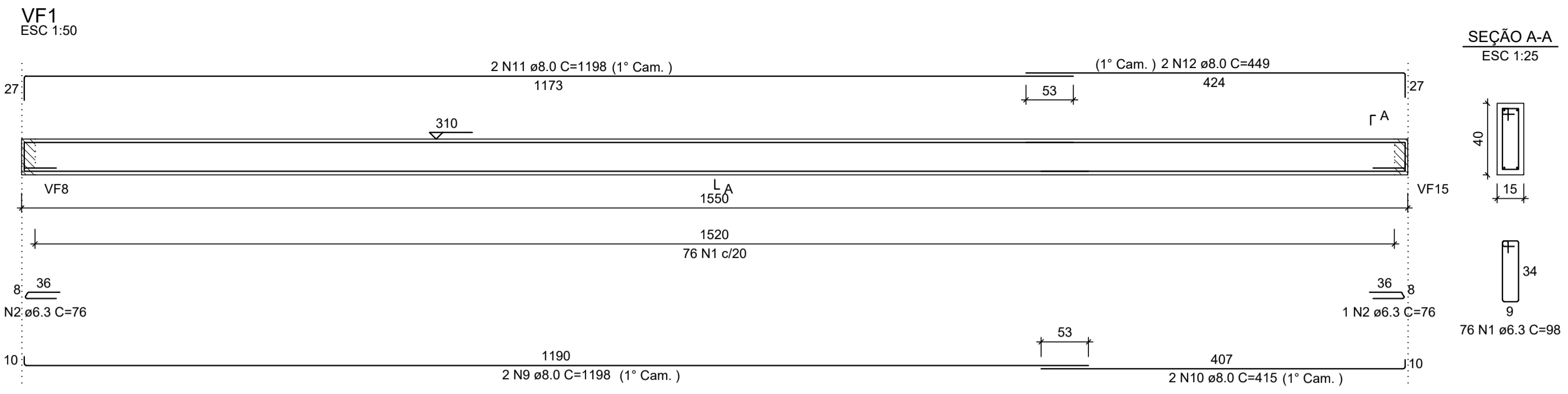
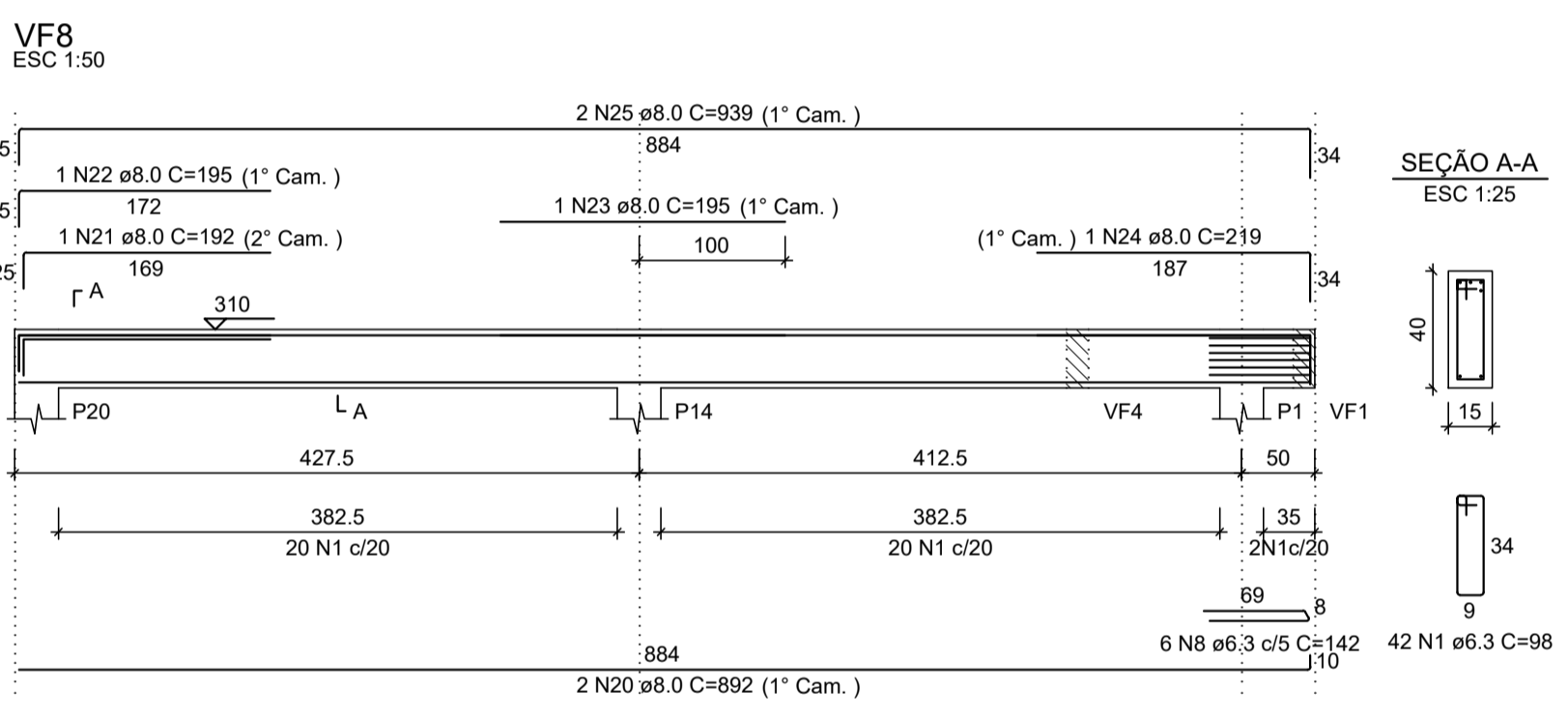
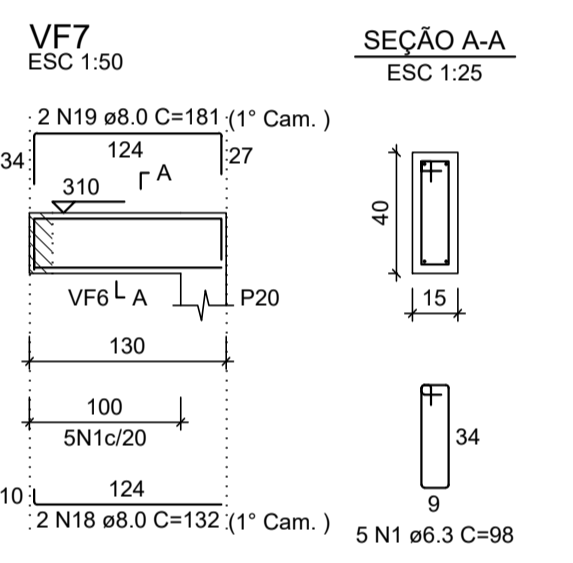
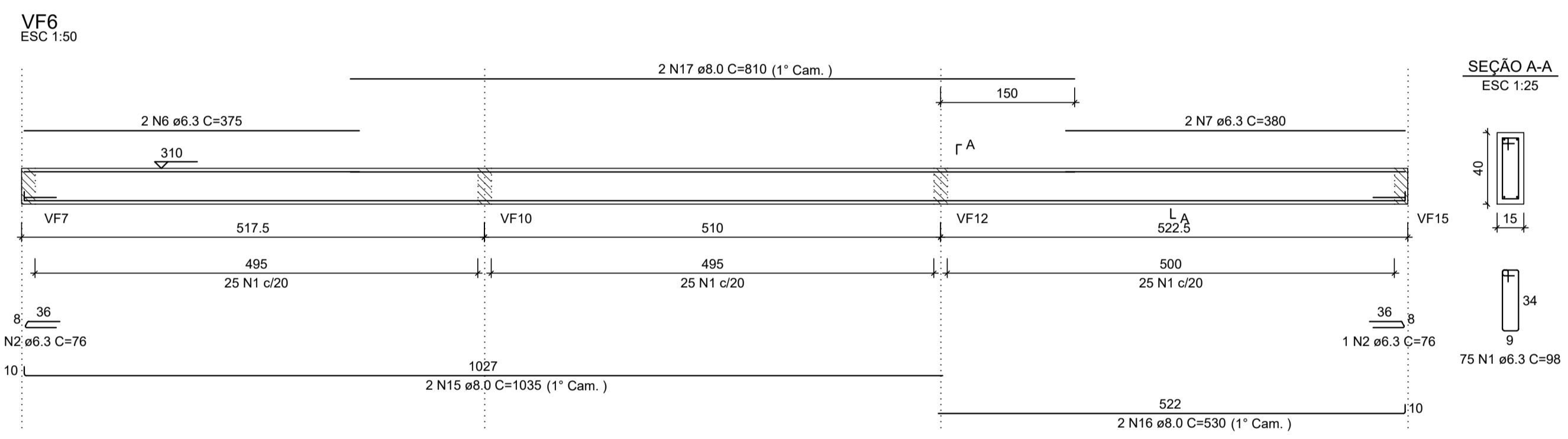
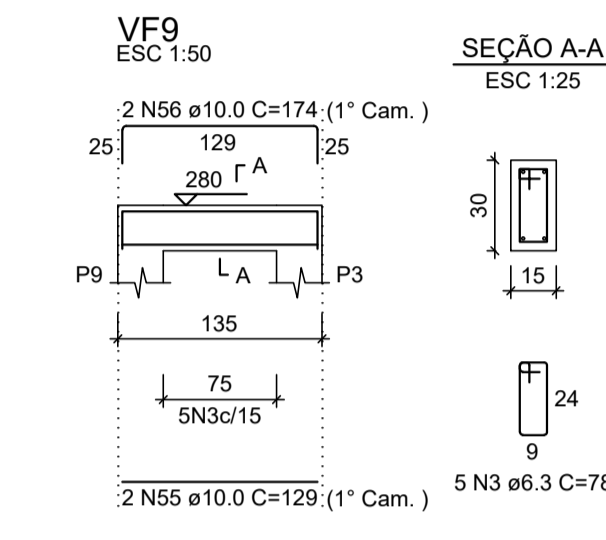
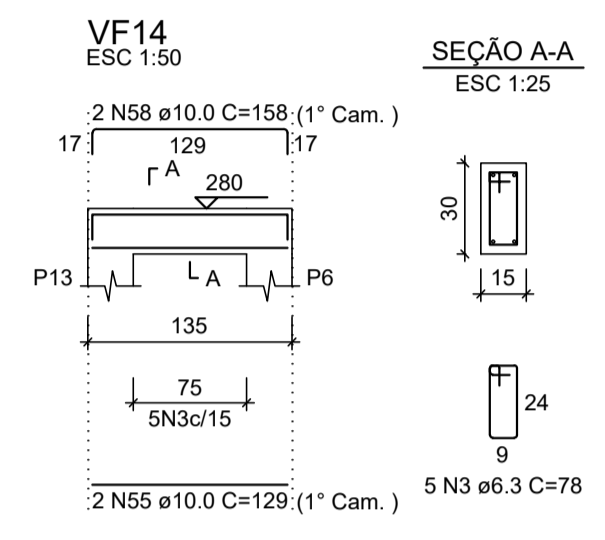
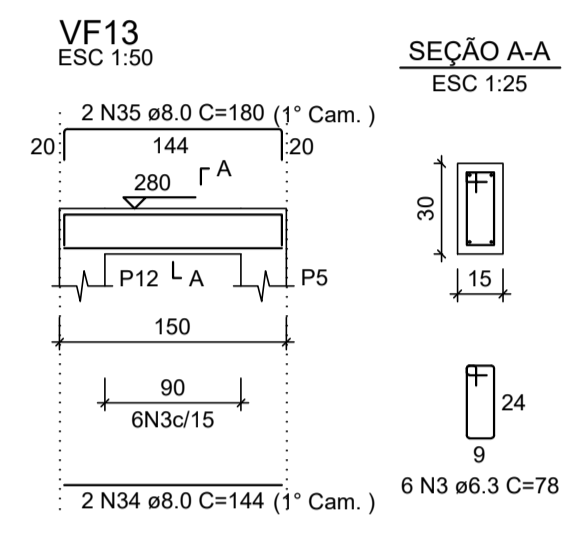
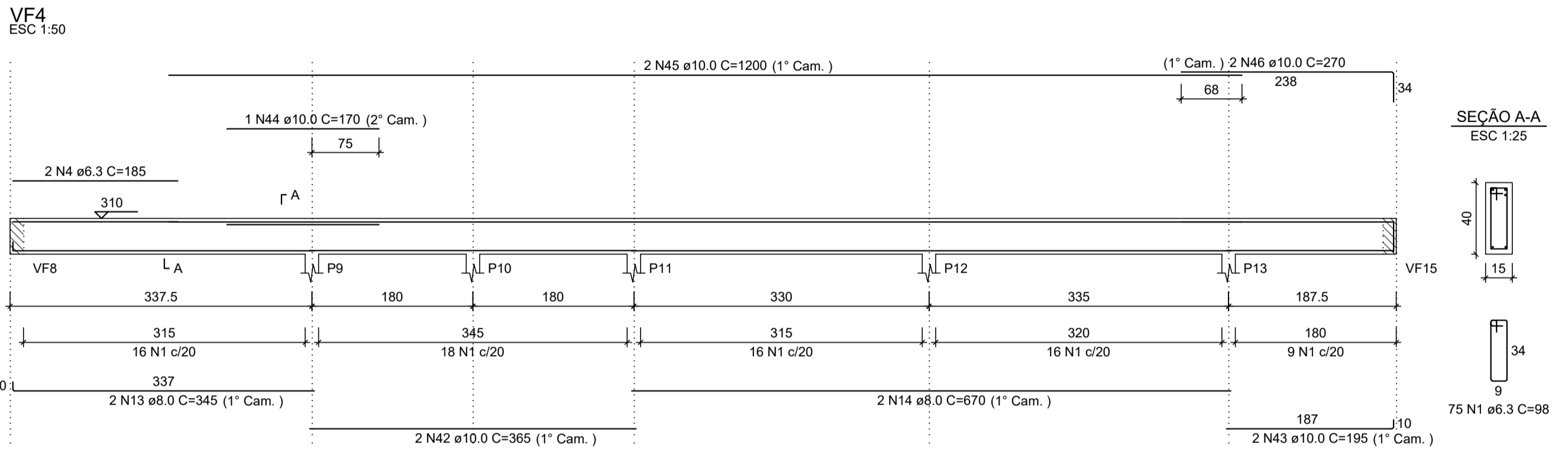


Det. Vigas  
Escala Indicada



RELAÇÃO DO AÇO

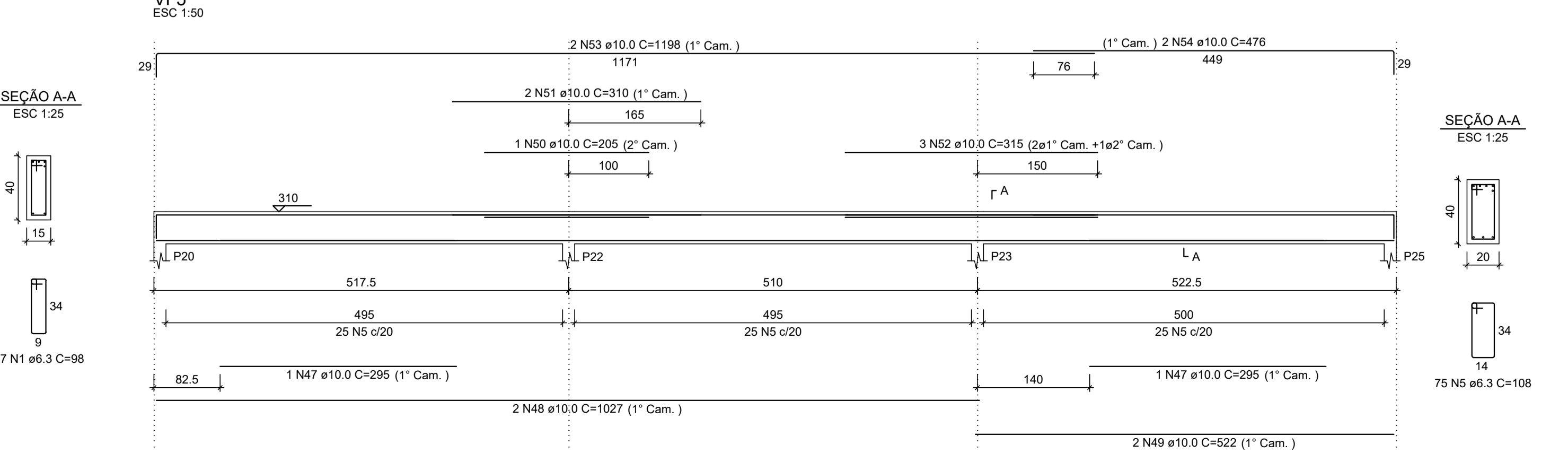
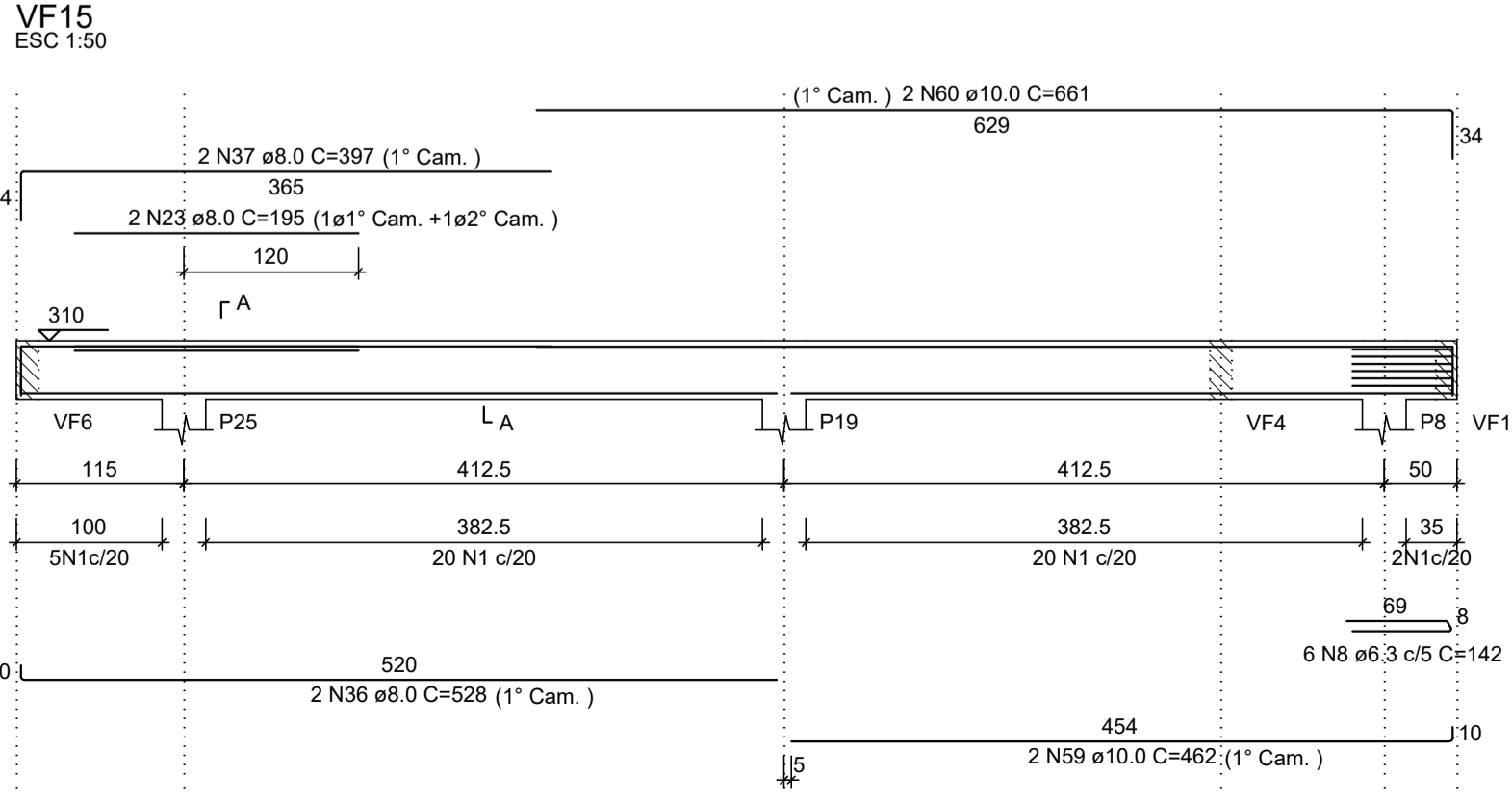
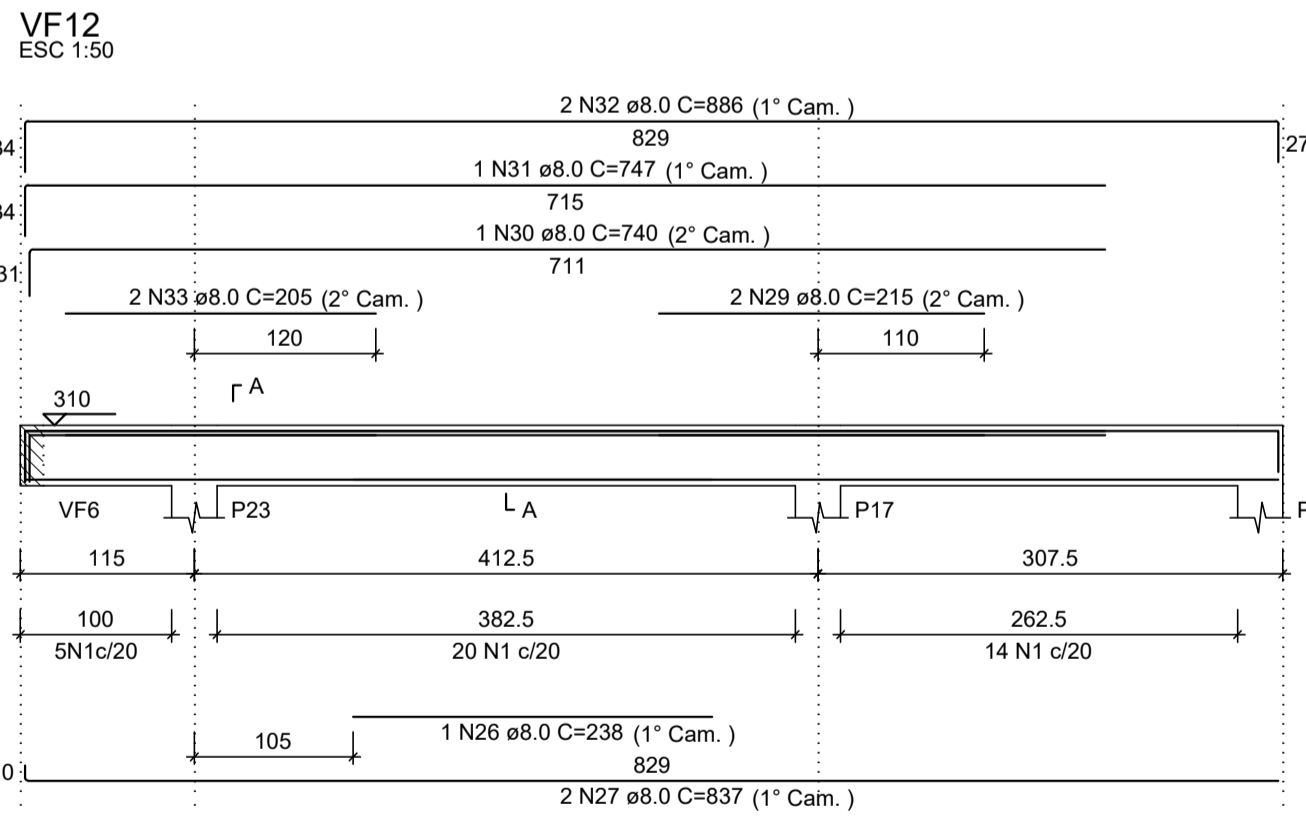
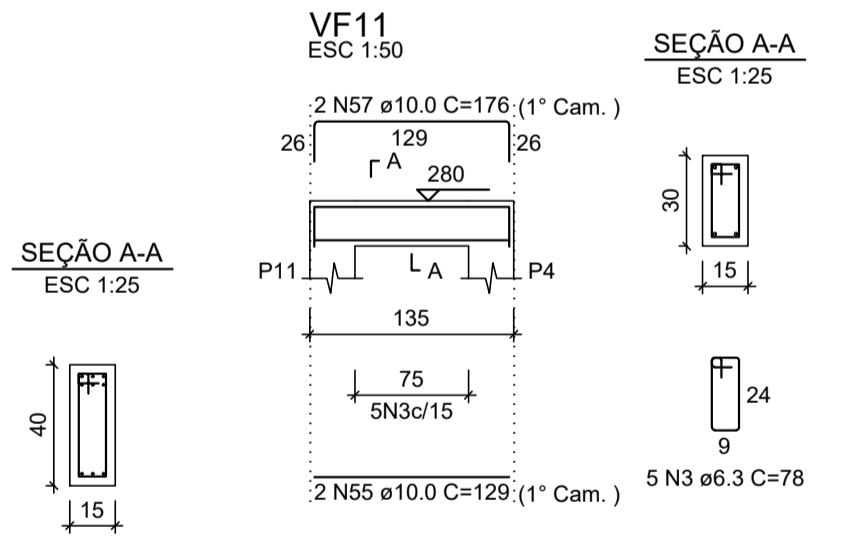
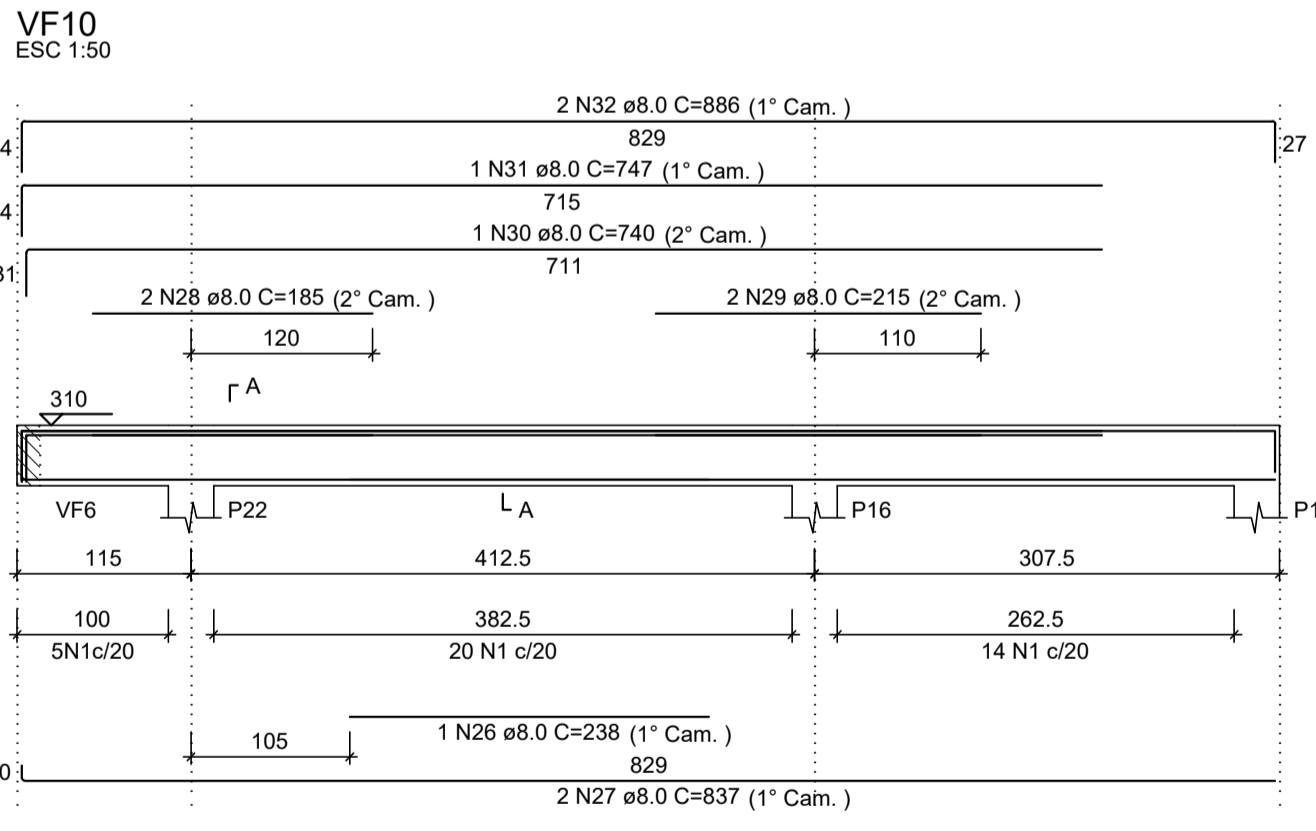
CAÇO	N	DIAM (mm)	QUANT	C.UNIT (cm)	C.TOTAL (cm)
CA50	1	6.3	398	98	39004
	2	6.3	76	304	2306
	3	6.3	138	78	10764
	4	6.3	2	185	370
	5	6.3	76	108	8100
	6	6.3	2	375	750
	7	6.3	2	380	760
	8	6.3	12	142	1704
	9	8.0	2	1198	2396
	10	8.0	2	415	830
	11	8.0	2	1198	2396
	12	8.0	2	449	898
	13	8.0	2	345	690
	14	8.0	2	670	1340
	15	8.0	2	1035	2070
	16	8.0	2	530	1060
	17	8.0	2	810	1620
	18	8.0	2	132	264
	19	8.0	2	181	362
	20	8.0	2	892	1784
	21	8.0	1	192	192
	22	8.0	1	195	195
	23	8.0	3	195	585
	24	8.0	1	219	219
	25	8.0	2	939	1878
	26	8.0	2	238	476
	27	8.0	4	837	3348
	28	8.0	2	185	370
	29	8.0	2	215	430
	30	8.0	2	740	1480
	31	8.0	2	747	1494
	32	8.0	2	896	1792
	33	8.0	2	205	410
	34	8.0	2	144	288
	35	8.0	2	180	360
	36	8.0	2	528	1056
	37	8.0	2	397	794
	38	10.0	2	349	698
	39	10.0	2	400	800
	40	10.0	2	674	1348
	41	10.0	2	719	1438
	42	10.0	2	365	730
	43	10.0	2	195	390
	44	10.0	1	170	170
	45	10.0	2	1200	2400
	46	10.0	2	270	540
	47	10.0	2	295	590
	48	10.0	2	1027	2054
	49	10.0	2	525	1044
	50	10.0	1	205	205
	51	10.0	2	310	620
	52	10.0	3	315	945
	53	10.0	2	1198	2396
	54	10.0	2	476	952
	55	10.0	6	129	774
	56	10.0	2	174	348
	57	10.0	2	176	352
	58	10.0	2	158	316
	59	10.0	2	462	924
	60	10.0	2	661	1322



RESUMO DO AÇO

AÇO	DIAM (mm)	C.TOTAL (m)	QUANT + 10% (Barras)	PESO + 10% (kg)
CA50	6.3	617.6	57	166.2
	8.0	332.6	31	144.4
	10.0	213.6	20	144.8
PESO TOTAL (kg)				
CA50		455.4		

Volume de concreto (C-25) = 6.95 m³  
Área de forma = 106.48 m²



REV. 01 | 06/11/19 | ATENDIMENTO AO RELATÓRIO DE ANÁLISE DO PROTOCOLO 73848/2019 | DAC

REV. 00 | 29/10/19 | EMISSÃO INICIAL | DAC

REVISÃO: DATA : | DESCRIÇÃO: | RESP.:

**Prefeitura Municipal de Pouso Alegre**

PROJETO: **DAC Engenharia**

GERÊNCIA DE PROJETOS: DENIS DE SOUZA SILVA CREA: MG-127.216/D

COORDENAÇÃO DE PROJETOS: ALOISIO CAETANO FERREIRA CREA: MG-97.132/D

RESPONSÁVEL TÉCNICO: ENGR. CIVIL FLÁVIA C. BARBOSA CREA: MG-187.842/D

DESENHO: WILLIAM BARADEL LARI

EMPREENDIMENTO: **AMPLIAÇÃO DO CEIM MEYRE APARECIDA DE PINHO**

ENDEREÇO: RUA FRANCISCO D. DA SILVA – BAIRRO ARISTEU DA C. RIOS, POUSO ALEGRE – MINAS GERAIS

DISCIPLINA: **ESTRUTURAL**

FASE DO PROJETO: **EXECUTIVO**

ASSUNTO: DETALHAMENTO DAS VIGAS DO RESPALDO, ARMAÇÃO DOS ELEMENTOS ESTRUTURAIS, PLANTA BAIXA, CORTES E QUANTITATIVO

FOLHA Nº: **05/06**

DATA INICIAL: 29/10/2019 | ESCALA: INDICADA | REVISÃO: R01 | ARQUIVO: DAC-PMPA-MEY-PE-EST-R01.DWG