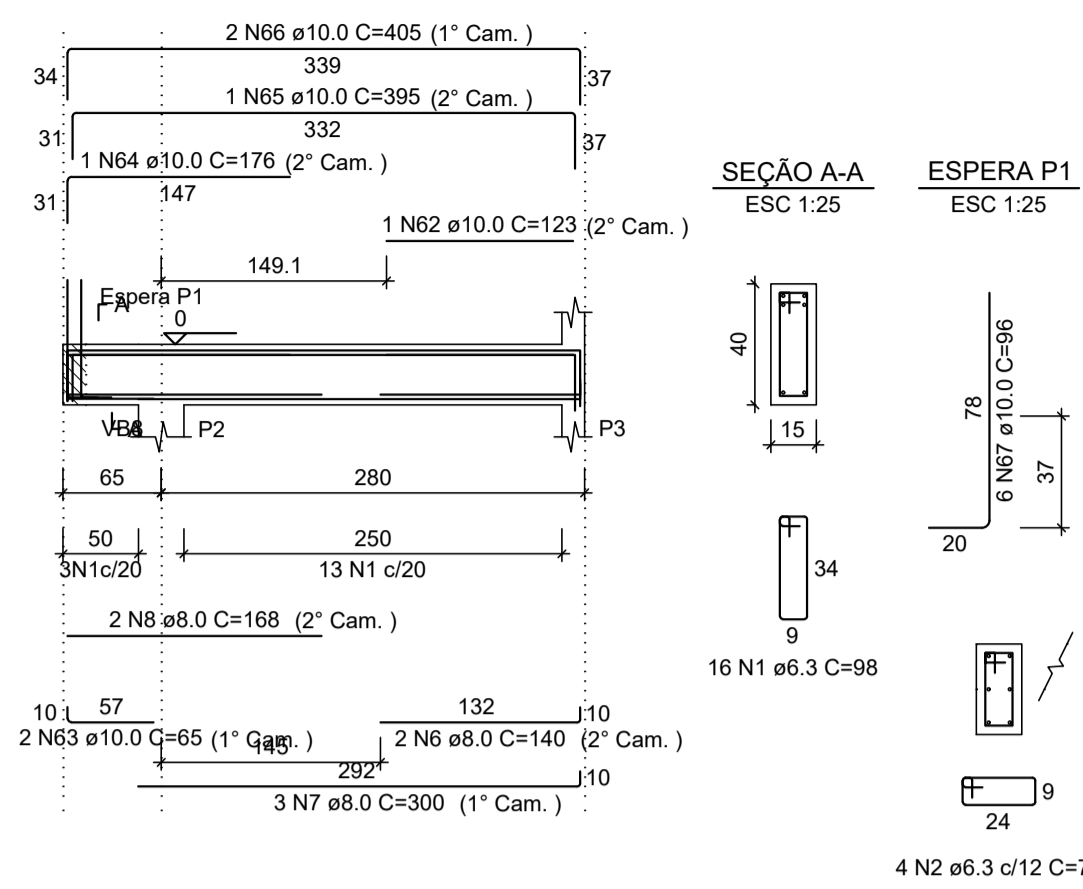
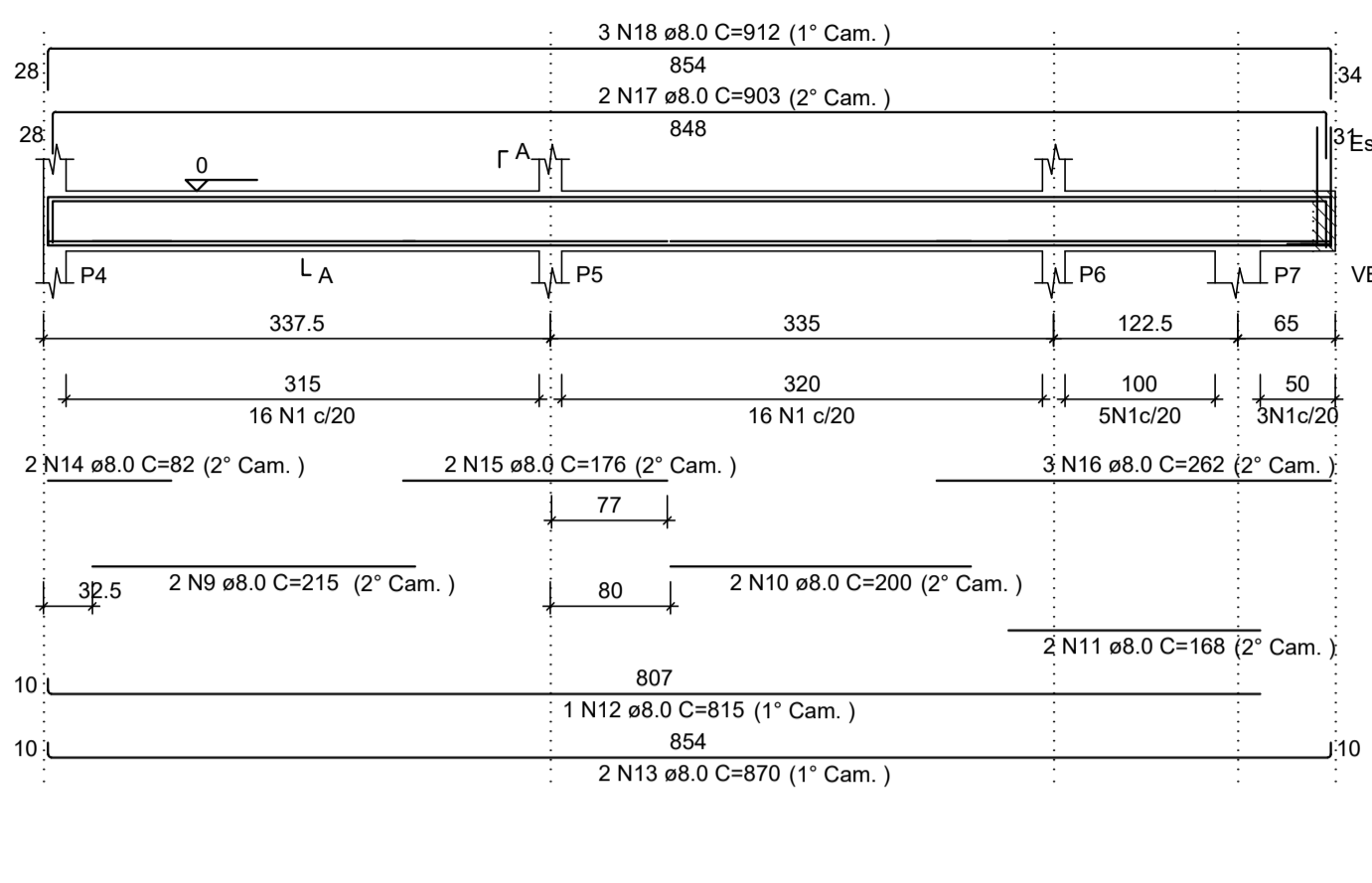


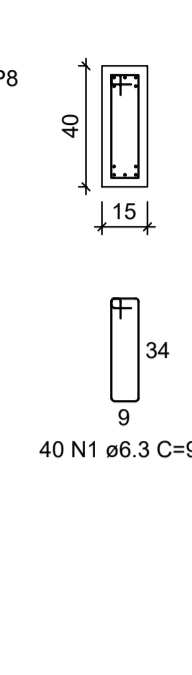
VB1
ESC 1:50



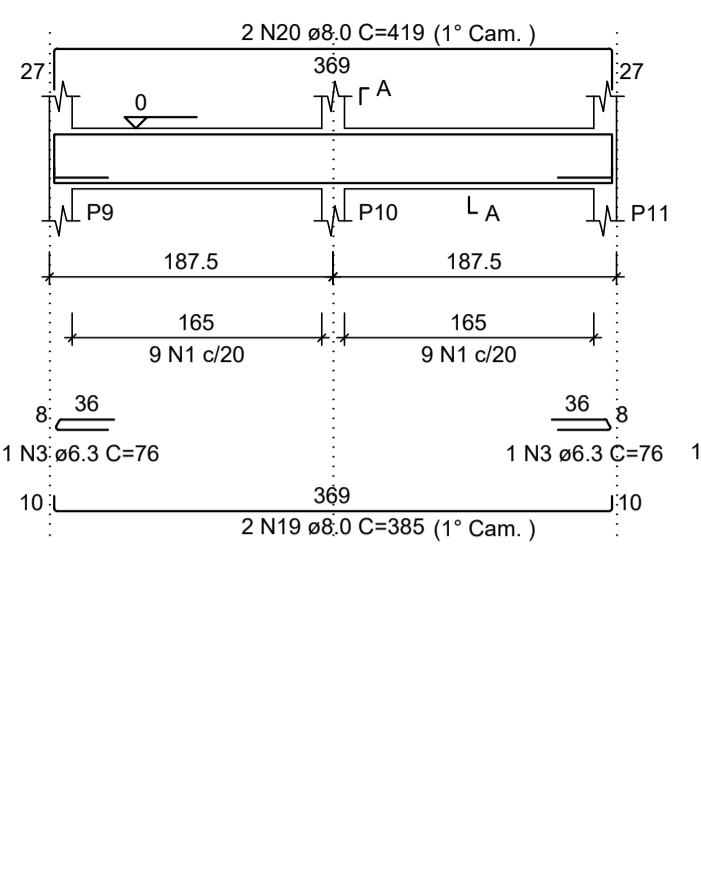
VB2
ESC 1:50



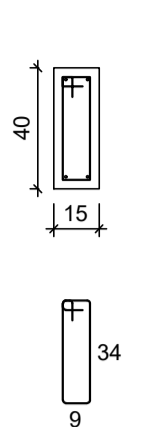
SEÇÃO A-A
ESC 1:25



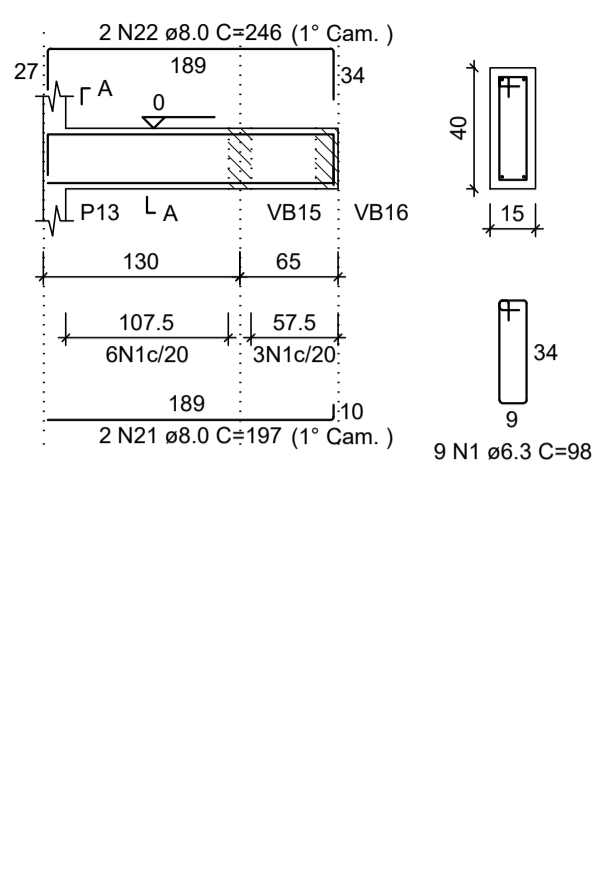
VB3
ESC 1:50



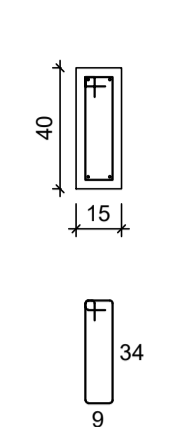
SEÇÃO A-A
ESC 1:25



VB4
ESC 1:50



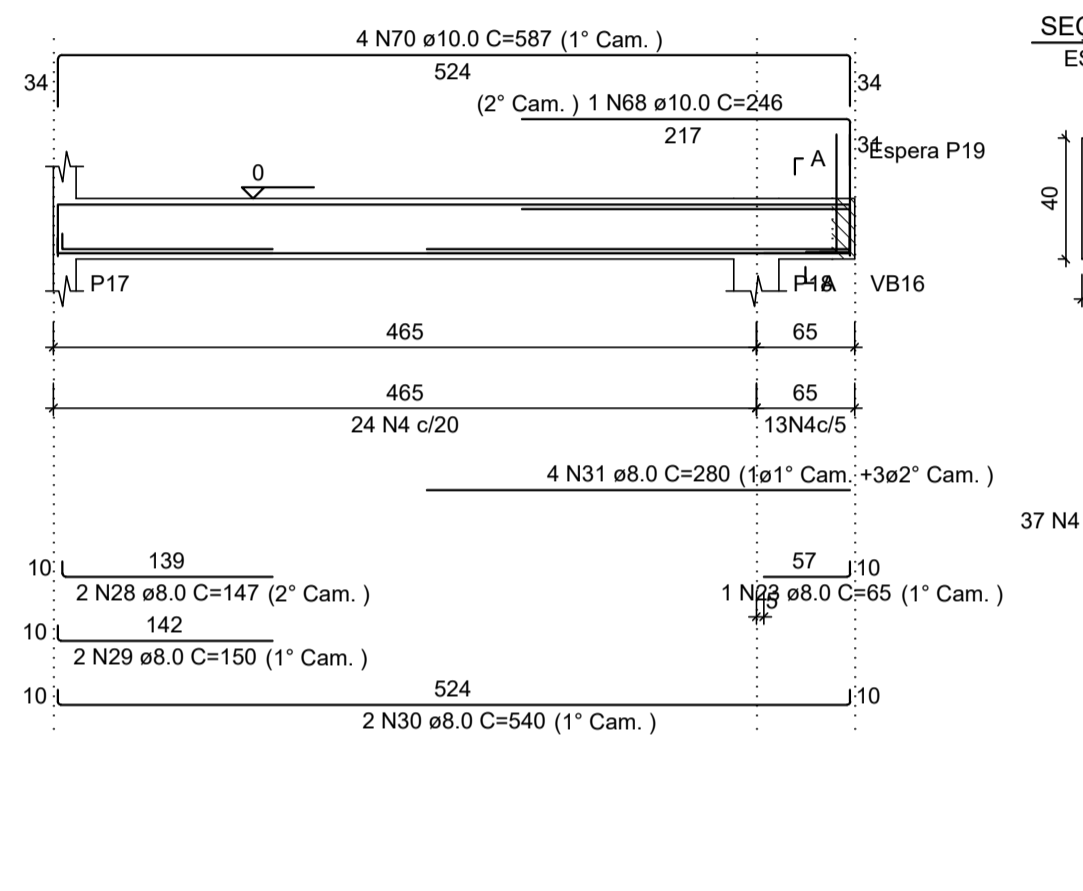
SEÇÃO A-A
ESC 1:25



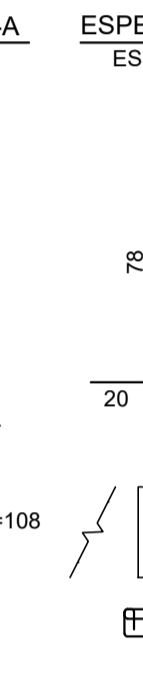
RELAÇÃO DO AÇO

AÇO	N	DIAM (mm)	QUANT	C.UNIT (cm)	C.TOTAL (cm)
CA50	1	6.3	334	98	32732
	2	6.3	24	78	1872
	3	6.3	2	76	152
	4	6.3	154	108	16632
	5	6.3	4	180	720
	6	8.0	2	140	280
	7	8.0	3	300	900
	8	8.0	2	168	336
	9	8.0	2	215	430
	10	8.0	2	200	400
	11	8.0	2	168	336
	12	8.0	1	815	815
	13	8.0	2	870	1740
	14	8.0	2	82	164
	15	8.0	2	912	1824
	16	8.0	3	262	786
	17	8.0	2	903	1806
	18	8.0	2	912	1824
	19	8.0	2	385	770
	20	8.0	2	419	838
	21	8.0	2	197	394
	22	8.0	2	246	492
	23	8.0	4	65	260
	24	8.0	2	142	284
	25	8.0	2	145	290
	26	8.0	2	535	1070
	27	8.0	4	279	1116
	28	8.0	2	147	294
	29	8.0	2	150	300
	30	8.0	2	540	1080
	31	8.0	4	280	1120
	32	8.0	2	138	276
	33	8.0	3	268	804
	34	8.0	2	250	500
	35	8.0	2	380	760
	36	8.0	2	1055	2110
	37	8.0	1	143	143
	38	8.0	3	273	819
	39	8.0	1	550	1100
	40	8.0	4	214	856
	41	8.0	4	264	1056
	42	8.0	3	265	795
	43	8.0	4	215	860
	44	8.0	6	283	1698
	45	8.0	3	285	855
	46	8.0	6	857	3428
	47	8.0	6	108	648
	48	8.0	3	242	726
	49	8.0	3	105	315
	50	8.0	4	895	3580
	51	8.0	6	901	5406
	52	8.0	2	865	1730
	53	8.0	4	145	580
	54	8.0	4	595	2380
	55	8.0	12	129	1548
	56	8.0	4	729	2916
	57	8.0	6	849	5094
	58	8.0	1	190	190
	59	8.0	2	310	620
	60	8.0	3	223	669
	61	8.0	3	108	324
	62	10.0	1	123	123
	63	10.0	2	65	130
	64	10.0	1	176	176
	65	10.0	1	395	395
	66	10.0	2	405	810
	67	10.0	34	96	3264
	68	10.0	2	246	492
	69	10.0	2	582	1164
	70	10.0	4	587	2348
	71	10.0	2	221	442
	72	10.0	4	1199	4796
	73	10.0	4	484	1936

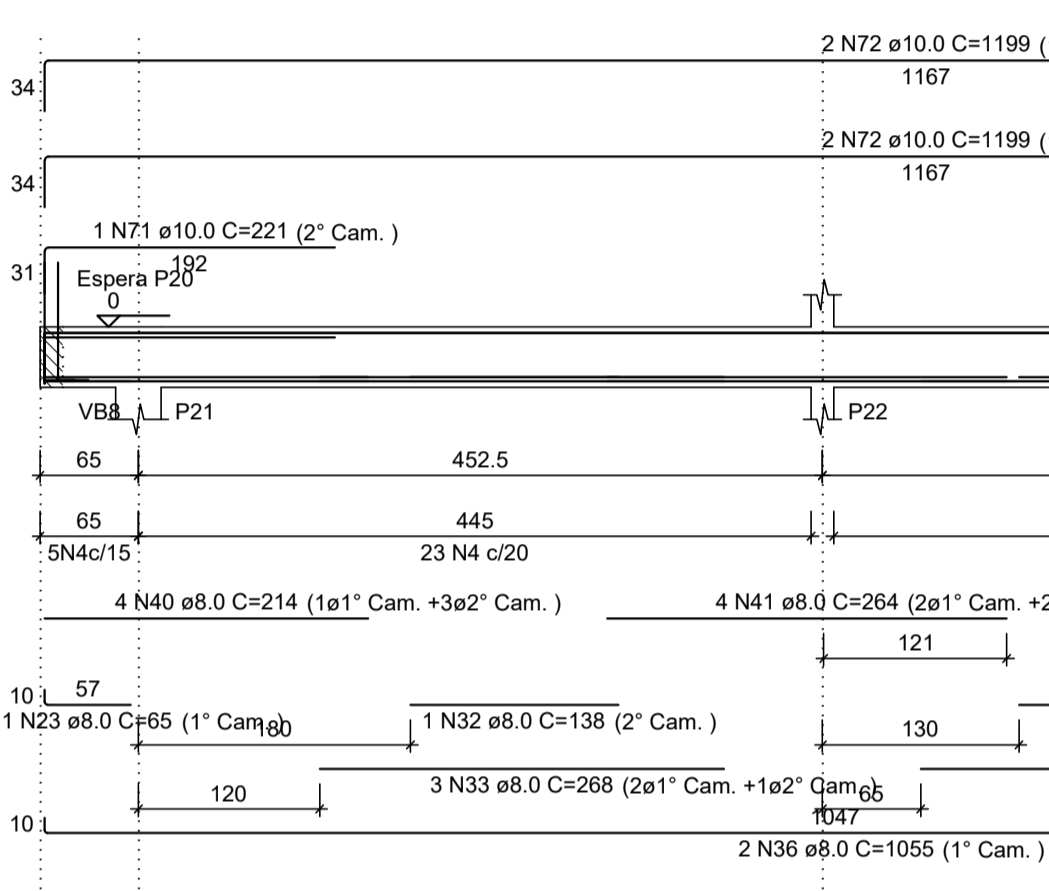
VB6
ESC 1:50



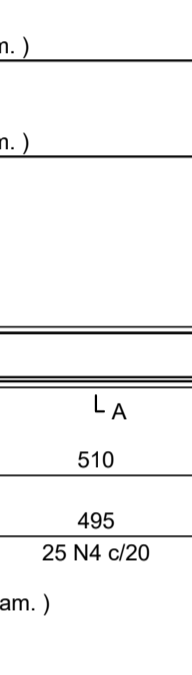
SEÇÃO A-A
ESC 1:25



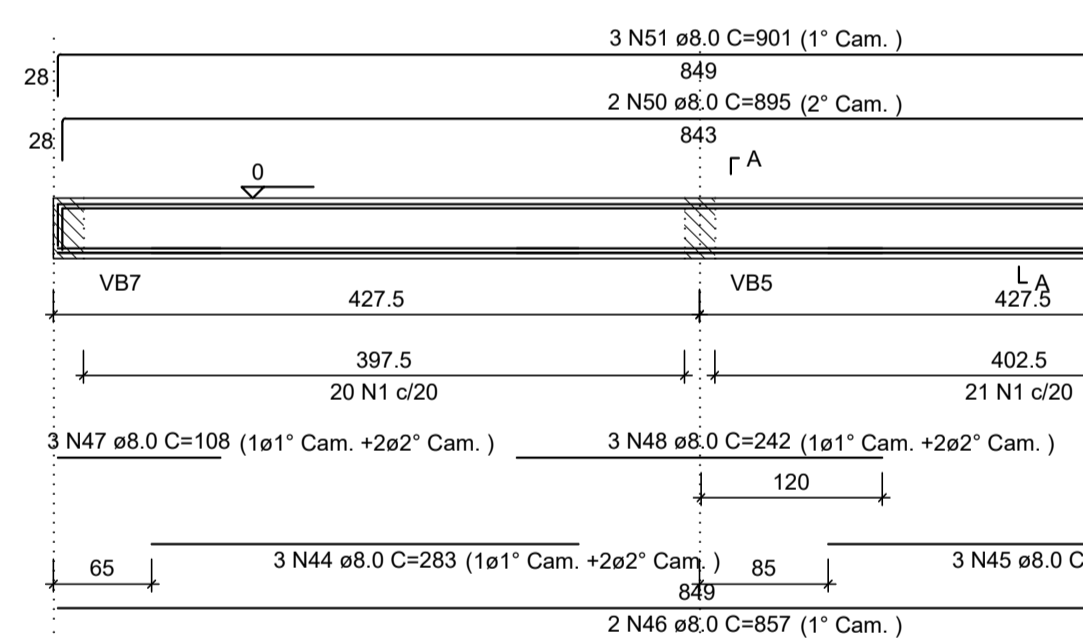
VB7
ESC 1:50



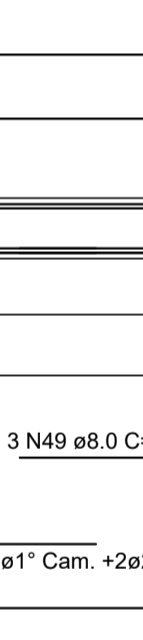
SEÇÃO A-A
ESC 1:25



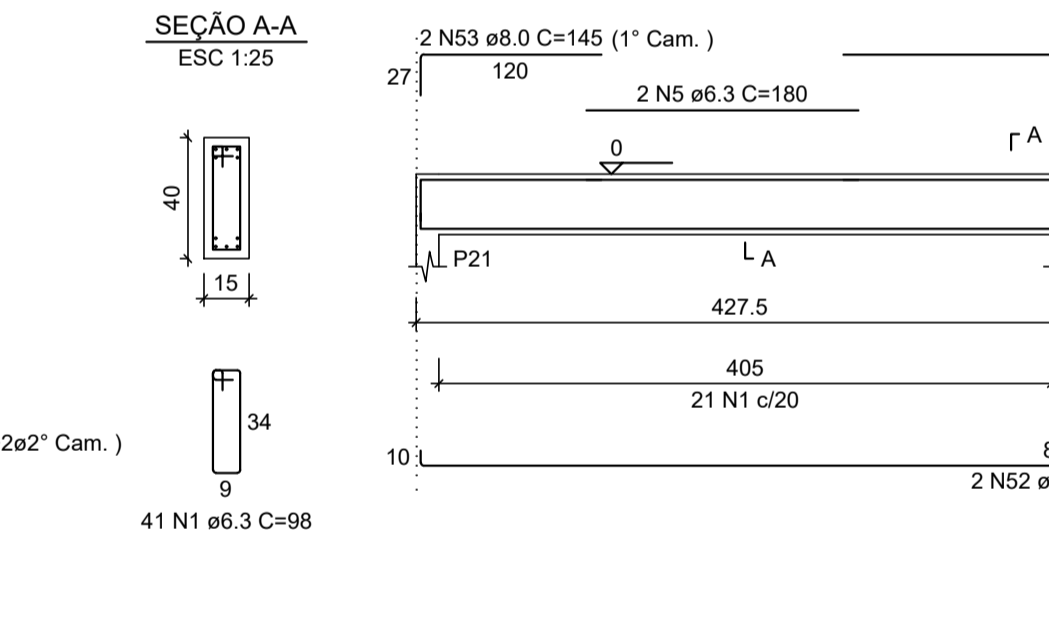
VB8
ESC 1:50



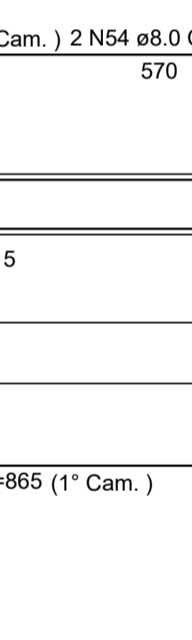
SEÇÃO A-A
ESC 1:25



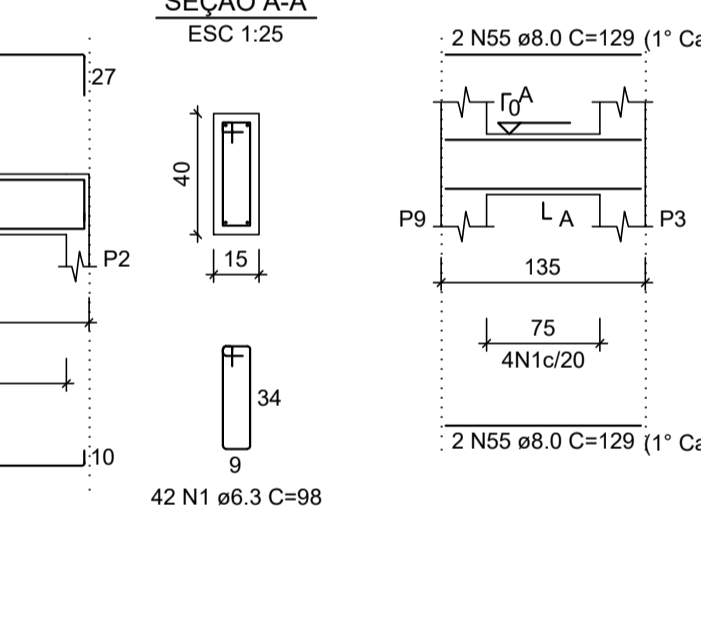
VB9
ESC 1:50



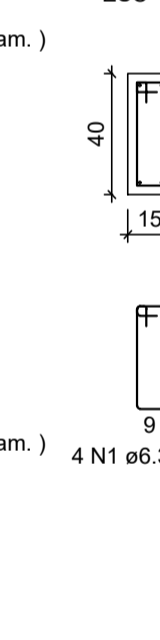
SEÇÃO A-A
ESC 1:25



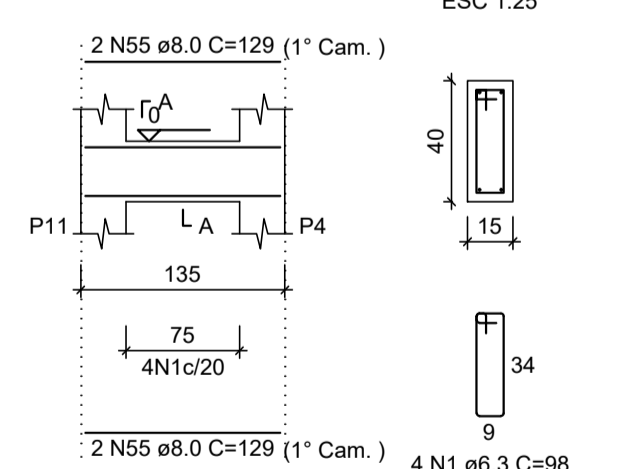
VB10
ESC 1:50



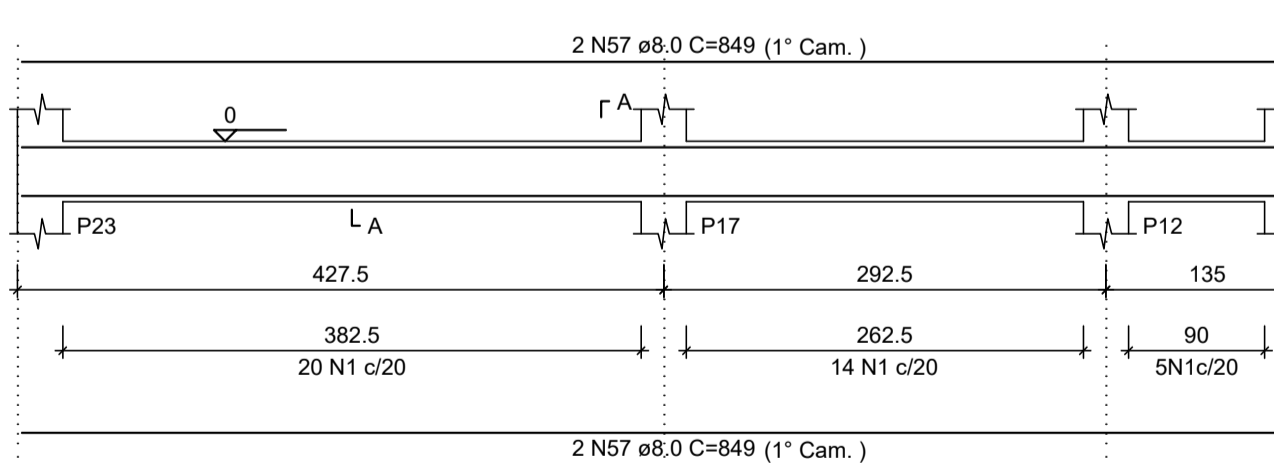
SEÇÃO A-A
ESC 1:25



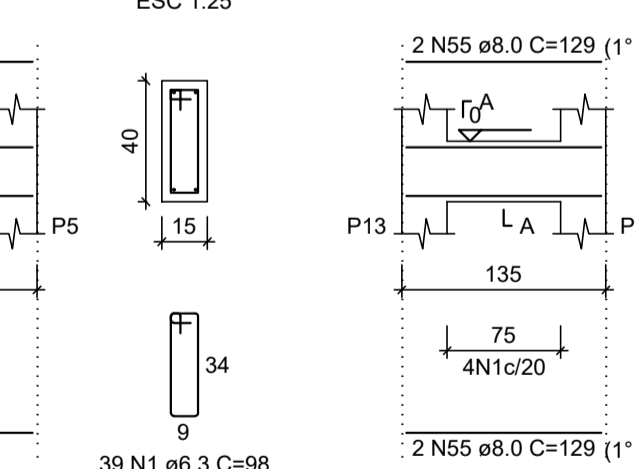
VB12
ESC 1:50



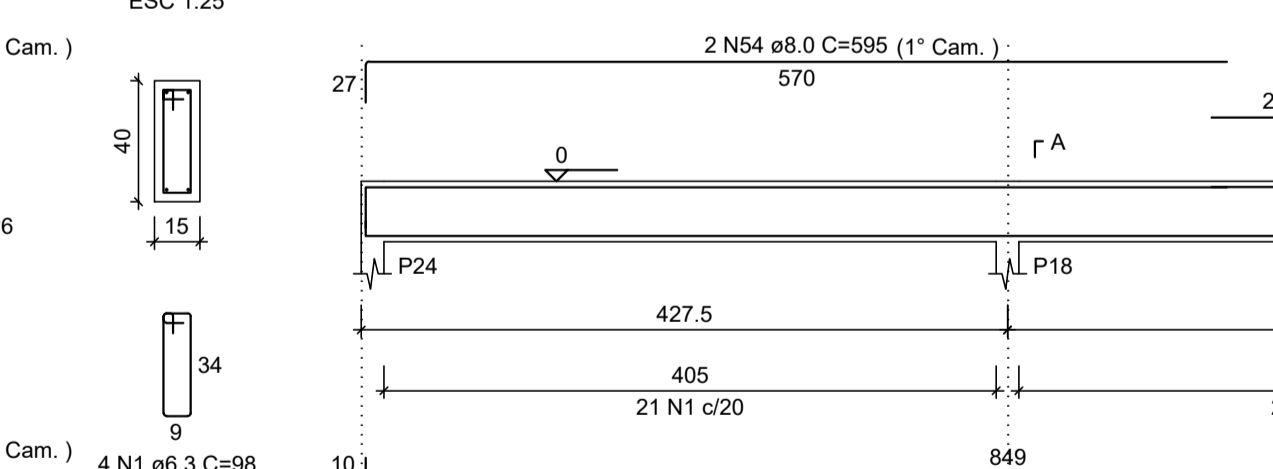
VB13
ESC 1:50



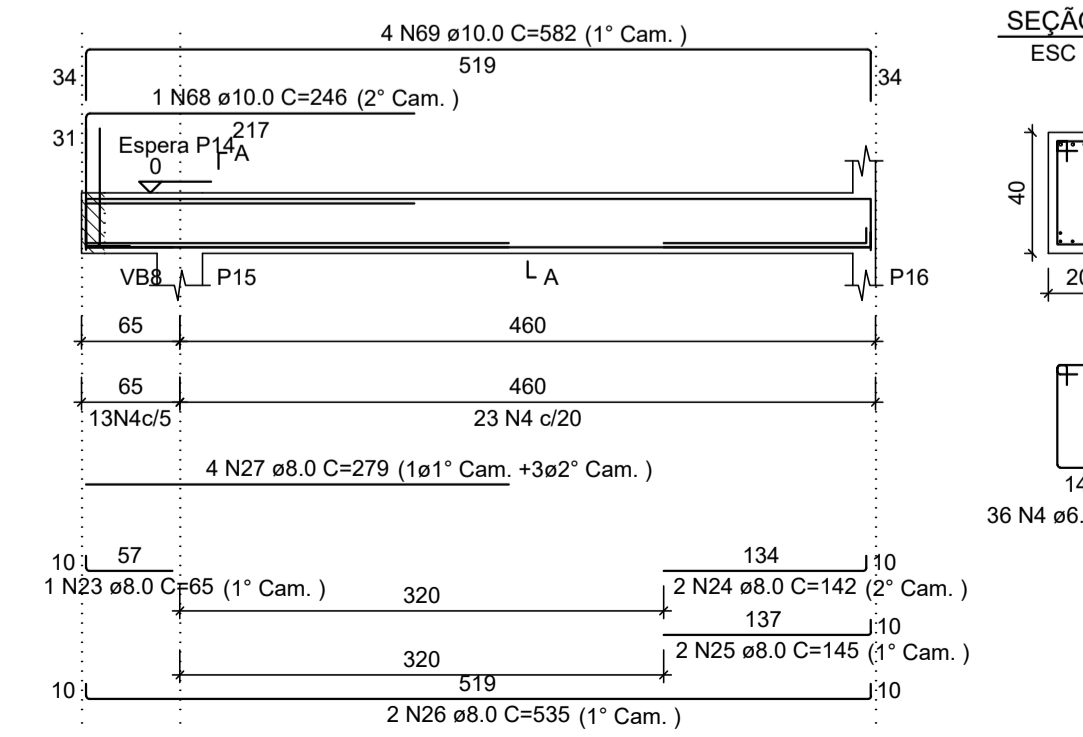
VB14
ESC 1:50



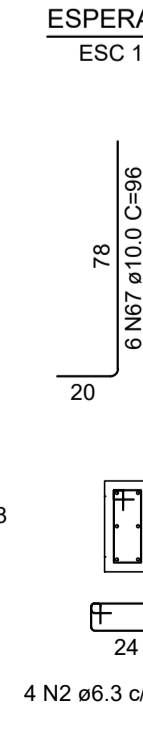
VB15
ESC 1:50



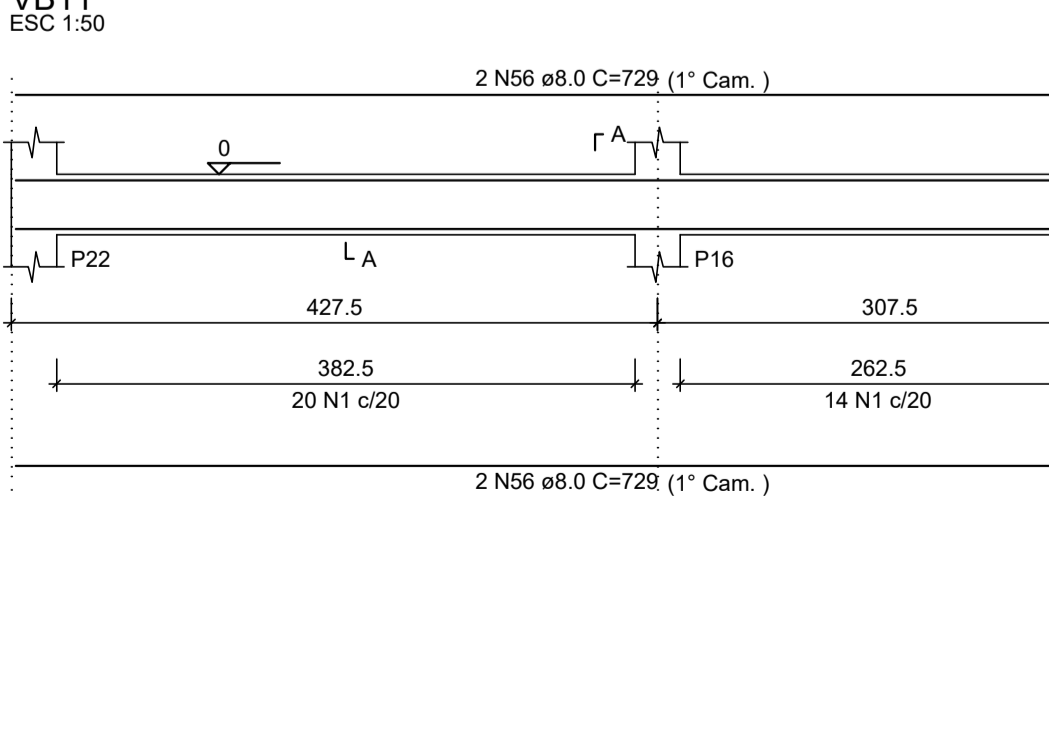
VB5
ESC 1:50



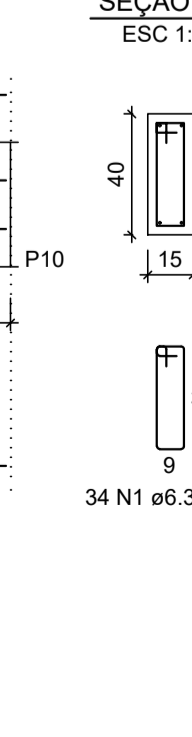
SEÇÃO A-A
ESC 1:25



VB11
ESC 1:50



SEÇÃO A-A
ESC 1:25



RESUMO DO AÇO

AÇO	DIAM (mm)	C.TOTAL (m)	QUANT + 10% (Barras)	PESO + 10% (kg)
CA50	6.3	521.1	48	140.3
	8.0	623	58	270.4
	10.0	172.4	16	116.9
PESO TOTAL (kg)				
CA50		527.6		

Volume de concreto (C-25) = 6.40 m³
Área de forma = 94.36 m²

REV. 01	06/11/19	ATENDIMENTO AO RELATÓRIO DE ANÁLISE DO PROTOCOLO 73848/2019	DAC
REV. 00	29/10/19	EMISSÃO INICIAL	DAC
REVISÃO: DATA :	DESCRIÇÃO:		RESP.:



DAC Engenharia

Rua Miguel Vianna, nº 81, Sala 12
Bairro Morro Chic
CEP: 37500-080 - Itajubá / MG
Tel: (35) 3623-5720
www.dacengenharia.com.br

GERÊNCIA DE PROJETOS
DENIS DE SOUZA SILVA CREA: MG-127.216/D

COORDENAÇÃO DE PROJETOS
ALDOISO CAETANO FERREIRA CREA: MG-97.132/D

RESPONSÁVEL TÉCNICO
ENGR. CIVIL FLÁVIA C. BARBOSA CREA: MG-187.842/D

DESENHO
WILLIAM BARADEL LARI

AMPLIAÇÃO DO CEIM MEYRE APARECIDA DE PINHO

ENDEREÇO
RUA FRANCISCO D. DA SILVA - BARRIO ARISTEU DA C. RIOS
POUSO ALEGRE - MINAS GERAIS

ASSUNTO
DETALHAMENTO DAS VIGAS BALDRAME
ARMAÇÃO DOS ELEMENTOS ESTRUTURAIS
PLANTA BAIXA, CORTES E QUANTITATIVO

DISCIPLINA
ESTRUTURAL

FASE DO PROJETO
EXECUTIVO

FOLHA Nº.
04/06

DATA INICIAL
29/10/2019

ESCALA
INDICADA

REVISÃO
R01

ARQUIVO
DAC-PMPA-MEY-PE-EST-R01.DWG