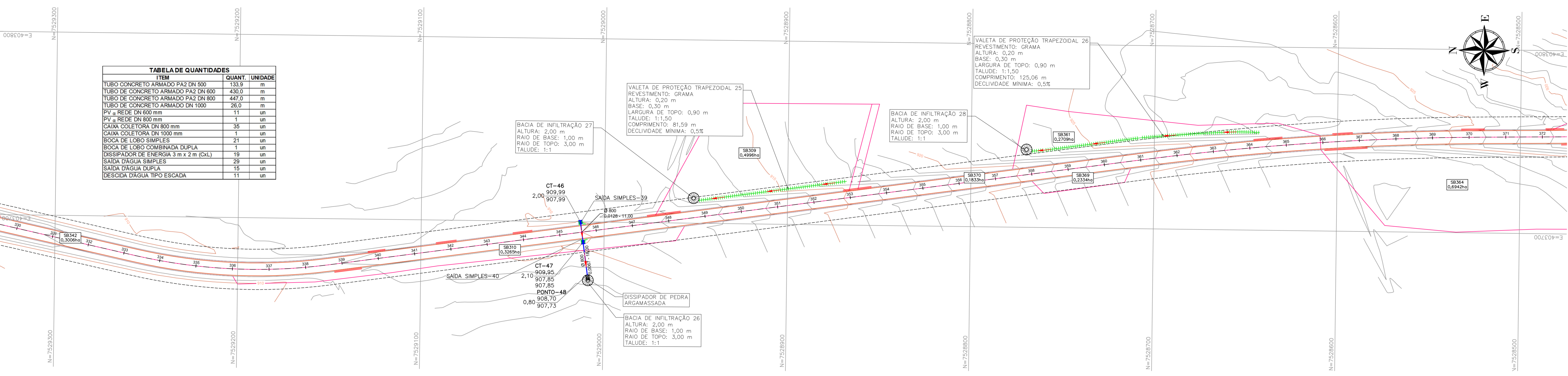


PLANTA - PROJETO DE DRENAGEM
ESCALA 1:1000



GALERIA DE DRENAGEM PROJETADA - PERFIL LONGITUDINAL
ESCALA HORIZONTAL 1:1000
ESCALA VERTICAL 1:100

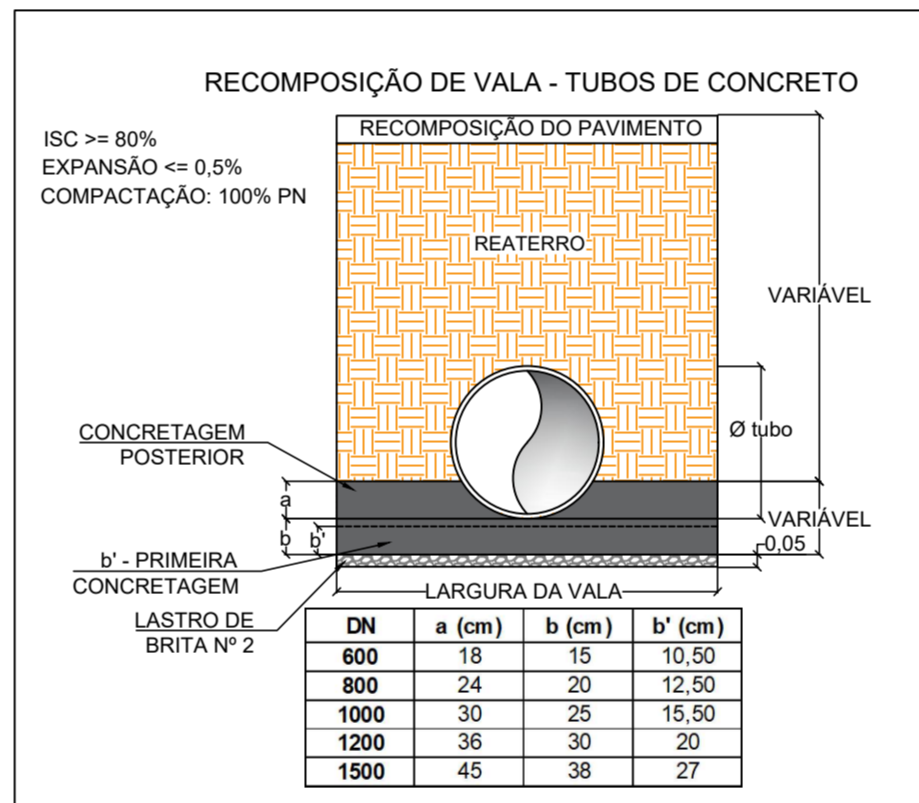
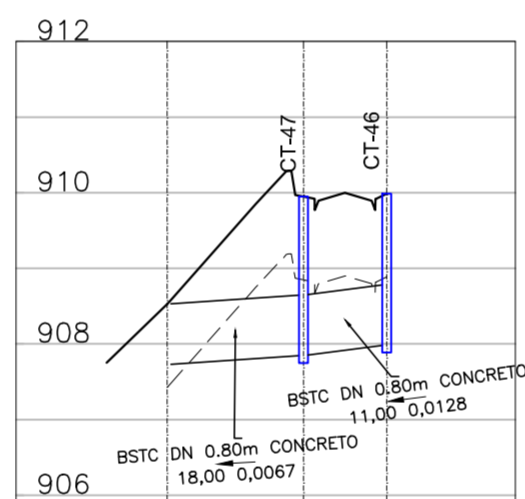


TABELA DE LOCAÇÃO DAS ESTRUTURAS

ESTRUTURA	NORTE (m)	LESTE (m)
SAIDA DUPLA-5	7.533.887.6962	405.433.2323
SAIDA DUPLA-6	7.533.885.9084	405.425.4342
SAIDA DUPLA-12	7.532.968.9654	405.635.7550
SAIDA DUPLA-13	7.532.965.6782	405.628.3783
SAIDA DUPLA-14	7.532.805.7505	405.680.4672
SAIDA DUPLA-15	7.532.805.9776	405.672.4700
SAIDA DUPLA-21	7.531.961.5271	405.900.5527
SAIDA DUPLA-22	7.531.961.4414	405.368.5522
SAIDA DUPLA-28	7.531.181.2678	404.464.3165
SAIDA DUPLA-32	7.530.922.9386	404.128.9642
SAIDA DUPLA-33	7.530.918.6154	404.135.2966
SAIDA DUPLA-37	7.529.597.5660	403.756.5458

TABELA DE LOCAÇÃO DAS ESTRUTURAS

ESTRUTURA	NORTE (m)	LESTE (m)
SAIDA DUPLA-38	7.529.598.9637	403.748.6688
SAIDA DUPLA-43	7.528.099.9393	404.278.3869
SAIDA DUPLA-44	7.528.092.0459	404.277.0845
SAIDA SIMPLES-1	7.534.356.4630	405.231.0149
SAIDA SIMPLES-2	7.534.355.5521	405.223.0667
SAIDA SIMPLES-3	7.534.155.8923	405.294.5130
SAIDA SIMPLES-4	7.534.150.5671	405.288.5412
SAIDA SIMPLES-7	7.533.618.7565	405.464.7987
SAIDA SIMPLES-8	7.533.618.4921	405.456.7929
SAIDA SIMPLES-9	7.533.362.2942	405.492.9204
SAIDA SIMPLES-10	7.533.360.5213	405.485.1189
SAIDA SIMPLES-11	7.533.265.7785	405.509.6923

TABELA DE LOCAÇÃO DAS ESTRUTURAS

ESTRUTURA	NORTE (m)	LESTE (m)
SAIDA SIMPLES-16	7.532.664.7906	405.615.7826
SAIDA SIMPLES-17	7.532.559.1109	405.534.6570
SAIDA SIMPLES-18	7.532.564.3444	405.528.6063
SAIDA SIMPLES-19	7.532.414.9824	405.433.5344
SAIDA SIMPLES-20	7.532.342.9510	405.397.2972
SAIDA SIMPLES-23	7.531.542.4356	405.357.8408
SAIDA SIMPLES-24	7.531.542.7308	405.349.8462
SAIDA SIMPLES-25	7.531.205.6968	405.135.7699
SAIDA SIMPLES-26	7.531.197.7298	405.136.4969
SAIDA SIMPLES-27	7.531.176.6022	404.896.6197
SAIDA SIMPLES-29	7.531.154.7651	404.383.9220
SAIDA SIMPLES-30	7.531.118.4325	404.277.9358

TABELA DE LOCAÇÃO DAS ESTRUTURAS

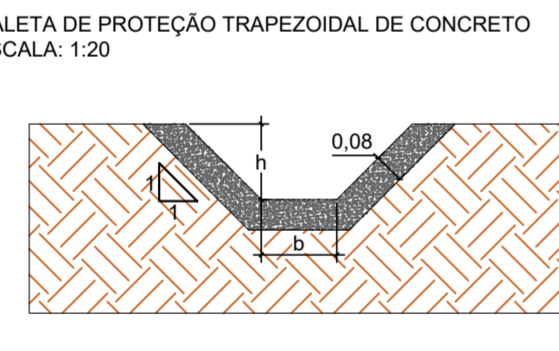
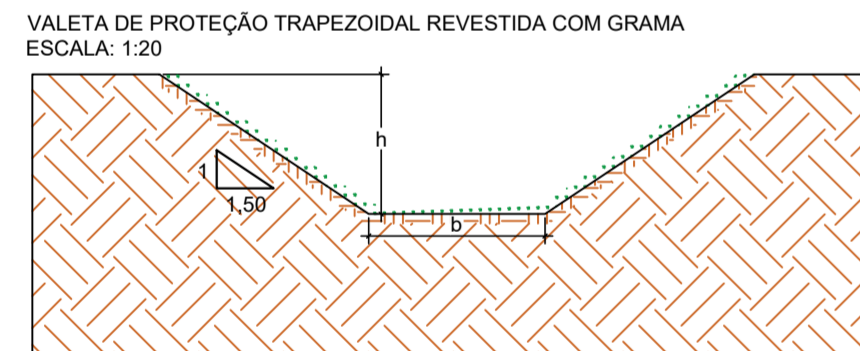
ESTRUTURA	NORTE (m)	LESTE (m)
SAIDA SIMPLES-31	7.531.111.8951	404.282.5478
SAIDA SIMPLES-34	7.530.529.3046	403.899.8201
SAIDA SIMPLES-35	7.530.532.1813	403.892.3552
SAIDA SIMPLES-36	7.530.377.1978	403.848.5989
SAIDA SIMPLES-39	7.529.013.6994	403.698.1731
SAIDA SIMPLES-40	7.529.012.5915	403.690.2502
SAIDA SIMPLES-41	7.528.118.4501	404.170.0141
SAIDA SIMPLES-42	7.528.110.5461	404.168.7738

VALETAS DE PROTEÇÃO TRAPEZOIDAIS REVESTIDAS COM GRAMA

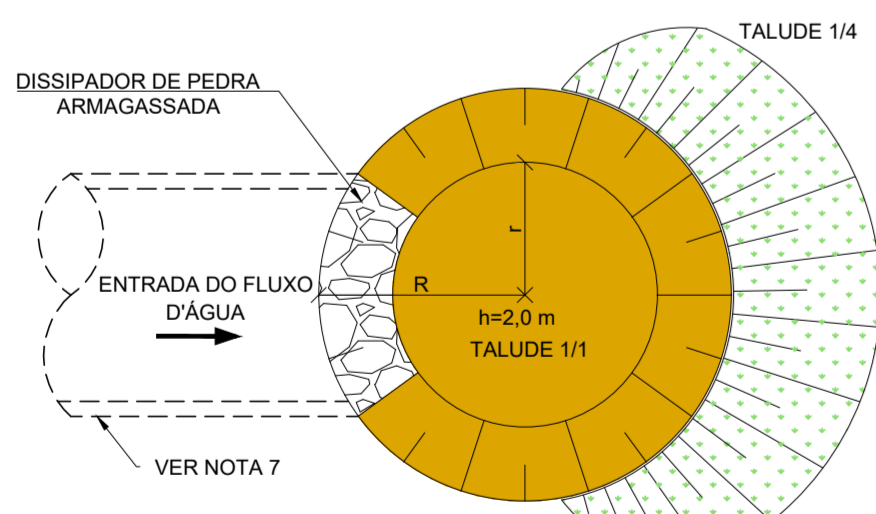
b (m)	h (m)	ESCAVAÇÃO (m³/m)	GRAMA EM PLACAS (m²/m)	COMPRIMENTO (m)
0,600	0,300	0,315	1,682	870,04
0,500	0,300	0,285	1,582	1690,86
0,300	0,200	0,120	1,021	1553,96

VALETAS DE PROTEÇÃO TRAPEZOIDAIS DE CONCRETO

b (m)	h (m)	ESCAVAÇÃO (m³/m)	CONCRETO (m³/m)	COMPRIMENTO (m)
0,300	0,300	0,104	0,180	259,71
0,500	0,300	0,120	0,240	213,39
0,300	0,200	0,100	0,161	277,85



BACIA DE INFILTRAÇÃO À JUSANTE DE BUEIROS DE GREIDE



BACIA DE INFILTRAÇÃO

BACIA	R (m)	r (m)	VOLUME (m³)
1	6,00	4,00	159,17
2	5,50	3,50	129,33
3	7,50	5,50	267,56
4	6,00	4,00	159,17
5	5,00	3,00	102,63
6	6,00	4,00	159,17
7	6,50	4,50	192,16
8	6,00	4,00	159,17
9	3,00	1,00	27,23
10	5,50	3,50	129,33
11	5,00	3,00	102,63
12	3,00	1,00	27,23
13	4,00	2,00	58,64
14	3,00	1,00	27,23
15	3,00	1,00	27,23
16	3,00	1,00	27,23
17	5,50	3,50	129,33
18	4,00	2,00	58,64
19	3,00	1,00	27,23
20	3,00	1,00	27,23
21	3,00	1,00	27,23
22	4,00	2,00	58,64
23	3,00	1,00	27,23
24	4,50	2,00	79,06
25	4,00	2,00	58,64
26	3,00	1,00	27,23
27	3,00	1,00	27,23
28	3,00	1,00	27,23
29	5,50	3,50	129,33
30	3,00	1,00	27,23
31	3,00	1,00	27,23

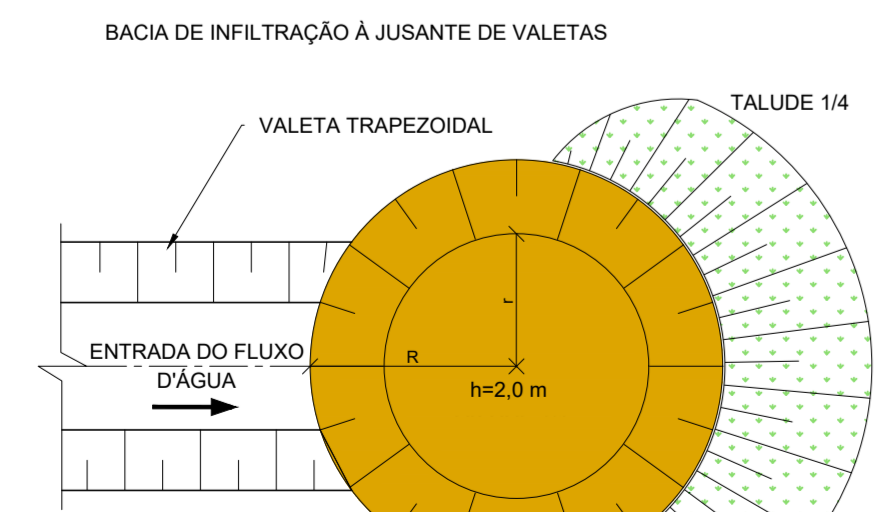


TABELA DE LOCAÇÃO DAS ESTRUTURAS

ESTRUTURA	NORTE (m)	LESTE (m)
CT-1	7.534.357.6728	405.232.3949
CT-2	7.534.356.5118	405.221.4565
CT-4	7.534.157.6324	405.295.0137
CT-5	7.534.150.3671	405.286.7544
CT-7	7.533.888.0417	405.434.7297
CT-8	7.533.885.5622	405.424.0128
CT-10	7.533.617.8775	405.466.3249
CT-11	7.533.617.4353	405.455.3338
CT-13	7.533.361.6627	405.494.5921
CT-14	7.533.359.3282	405.483.8427
CT-16	7.532.969.5566	405.637.1663
CT-17	7.532.965.3062	405.627.0207

TABELA DE LOCAÇÃO DAS ESTRUTURAS

ESTRUTURA	NORTE (m)	LESTE (m)
CT-19	7.532.805.7076	405.681.9779
CT-20	7.532.806.0198	405.670.9824