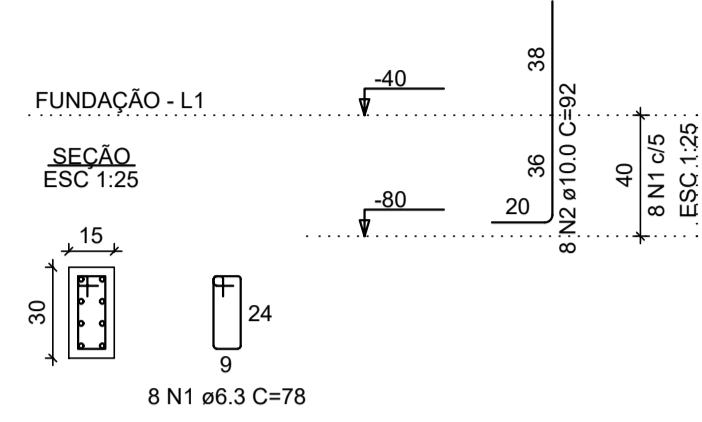
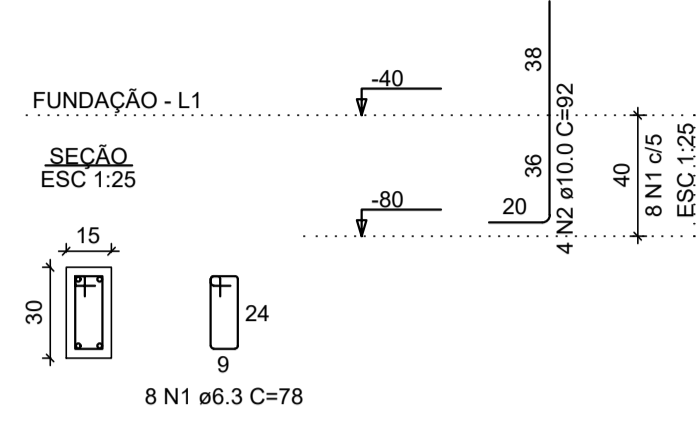


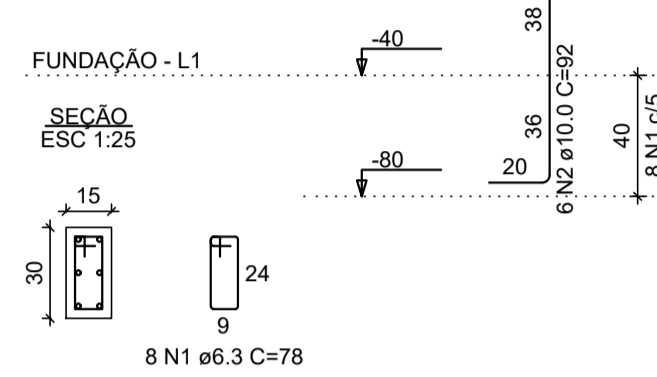
P2=P17=P21



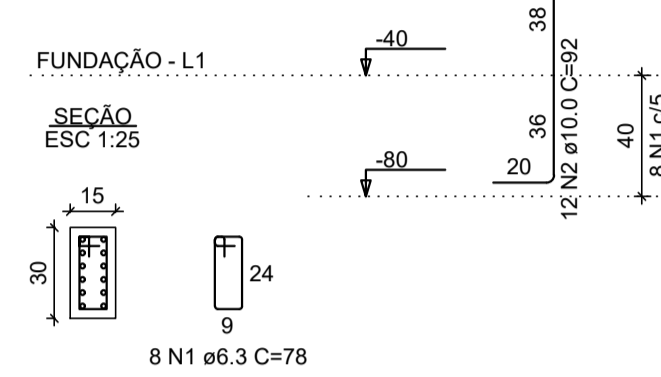
P3=P4=P5=P6=P9=P10=P11=
=P13=P15=P18=P22=P23=P24



P7=P12



P16



RELAÇÃO DO AÇO

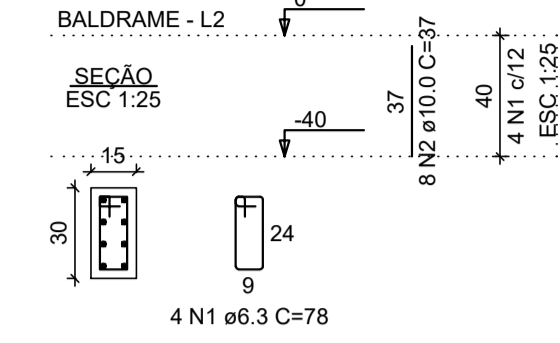
AÇO	N	DIAM (mm)	QUANT	C.UNIT (cm)	C.TOTAL (cm)
CA50	1	6.3	152	78	11856
	2	10.0	100	92	9200

RESUMO DO AÇO

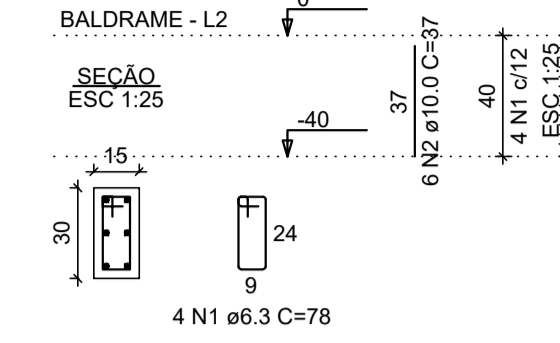
AÇO	DIAM (mm)	C.TOTAL (m)	QUANT + 10% (Barras)	PESO + 10% (kg)
CA50	6.3	118.6	11	31.9
	10.0	92	9	62.4
PESO TOTAL (kg)				94.3

Volume de concreto (C-25) = 0.34 m³
Área de forma = 6.84 m²

P2=P21



P7



RELAÇÃO DO AÇO

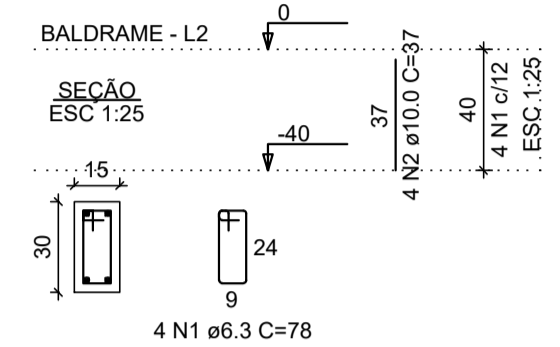
AÇO	N	DIAM (mm)	QUANT	C.UNIT (cm)	C.TOTAL (cm)
CA50	1	6.3	24	78	1872
	2	10.0	34	92	1258

RESUMO DO AÇO

AÇO	DIAM (mm)	C.TOTAL (m)	QUANT + 10% (Barras)	PESO + 10% (kg)
CA50	6.3	18.7	2	5
	10.0	12.6	2	8.5
PESO TOTAL (kg)				13.6

Volume de concreto (C-25) = 0.11 m³
Área de forma = 2.16 m²

P15=P18=P24



RELAÇÃO DO AÇO

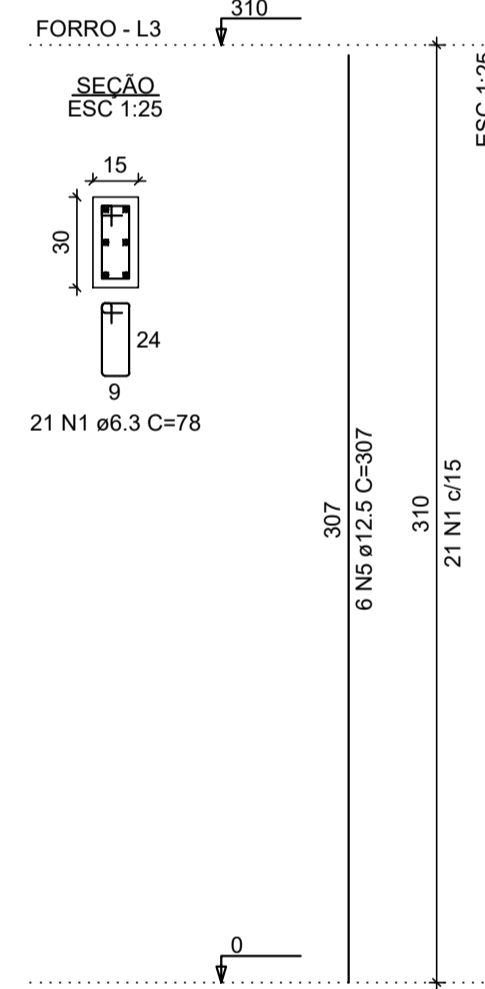
AÇO	N	DIAM (mm)	QUANT	C.UNIT (cm)	C.TOTAL (cm)
CA50	1	6.3	529	78	41262
	2	10.0	16	317	5072
	3	10.0	30	307	9210
	4	10.0	50	347	17350
	5	12.5	6	307	1842

RESUMO DO AÇO

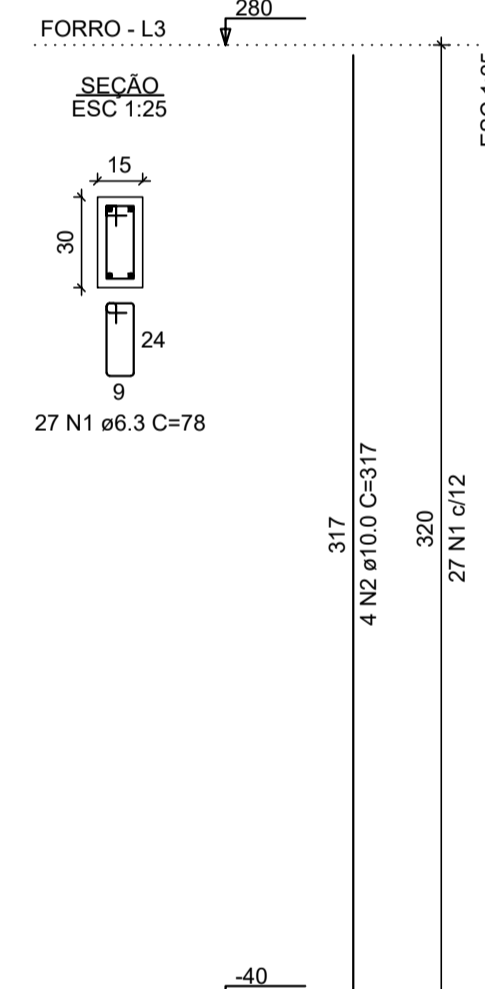
AÇO	DIAM (mm)	C.TOTAL (m)	QUANT + 10% (Barras)	PESO + 10% (kg)
CA50	6.3	412.6	38	111.1
	10.0	316.3	29	214.5
	12.5	18.4	2	19.5
PESO TOTAL (kg)				345.1

Volume de concreto (C-25) = 2.83 m³
Área de forma = 56.61 m²

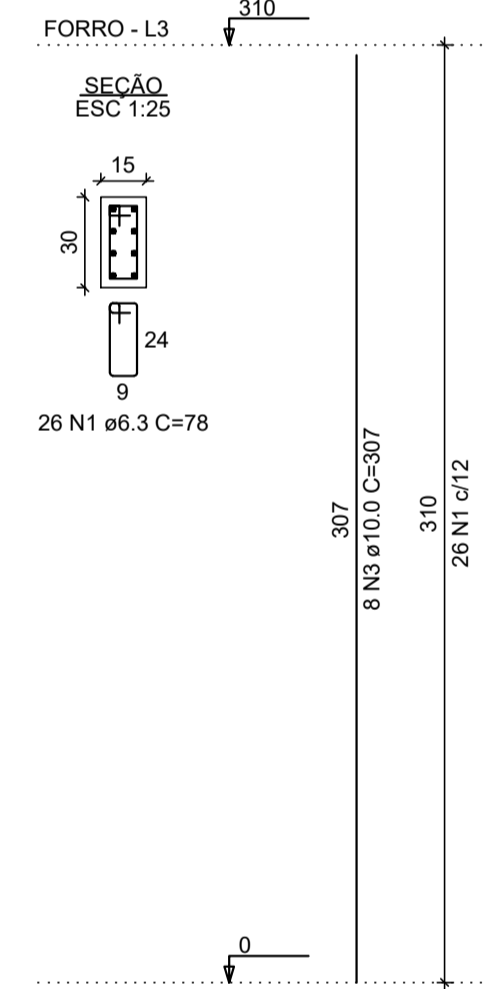
P1



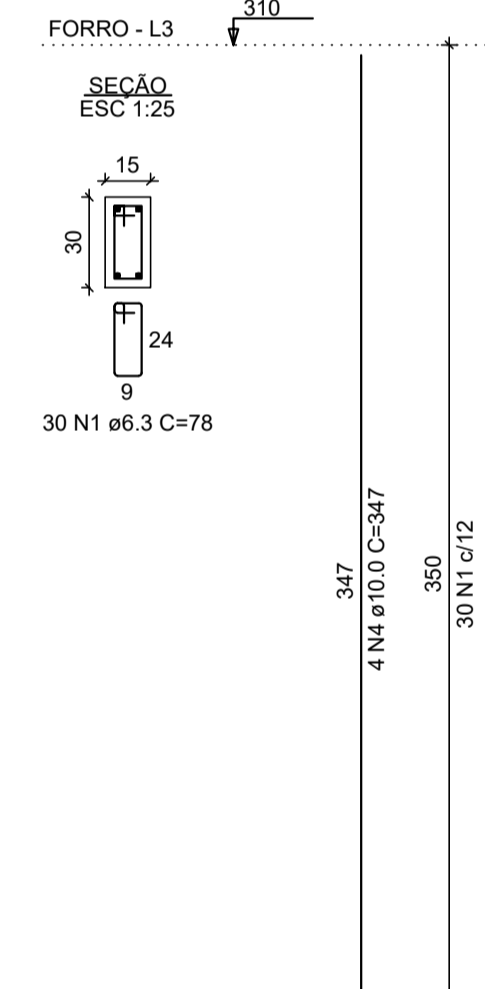
P3=P4=P5=P6



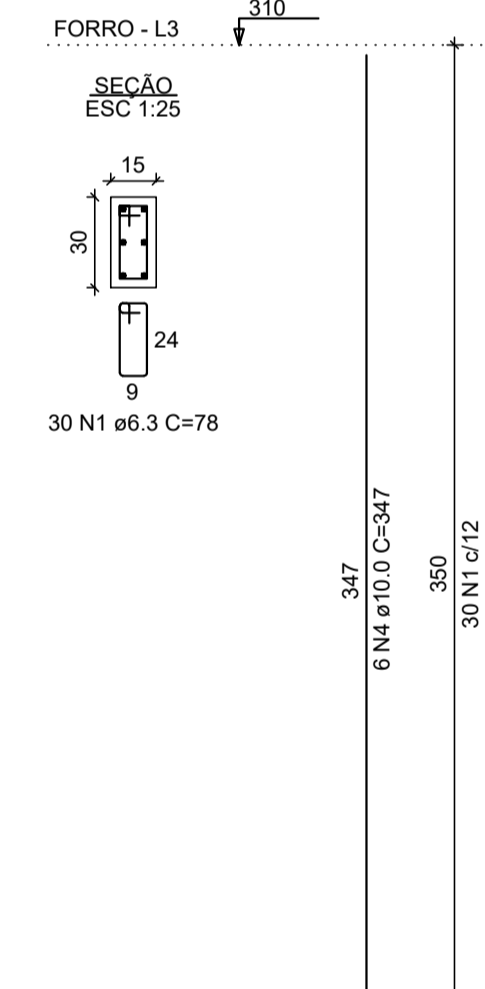
P8=P14



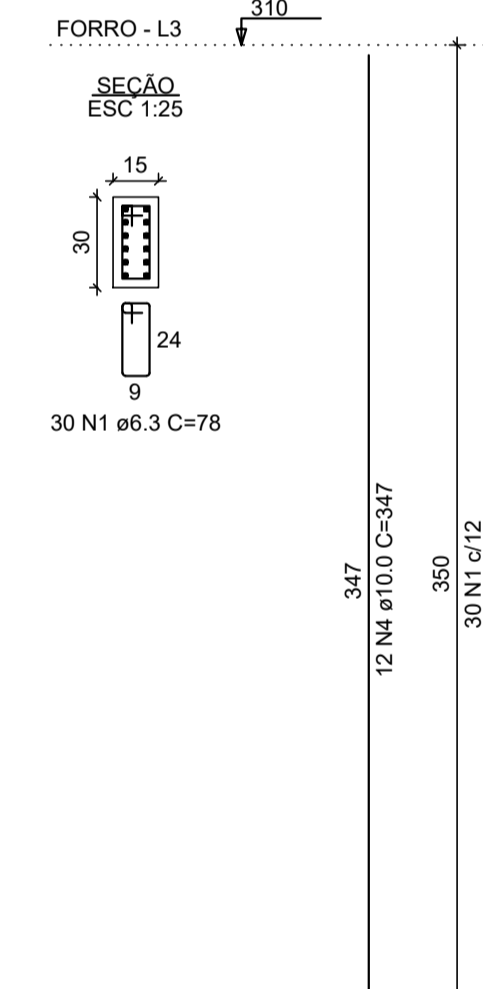
P9=P10=P11=P13=P22=
=P23



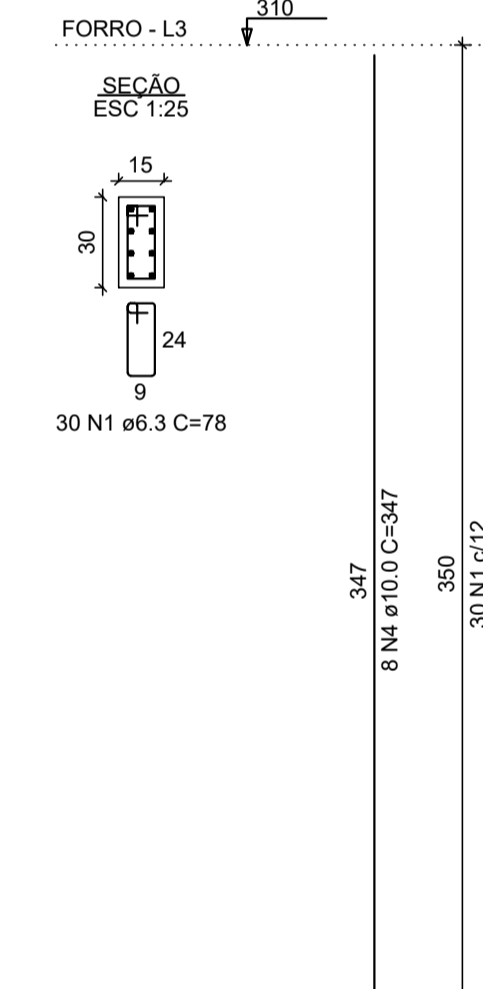
P12



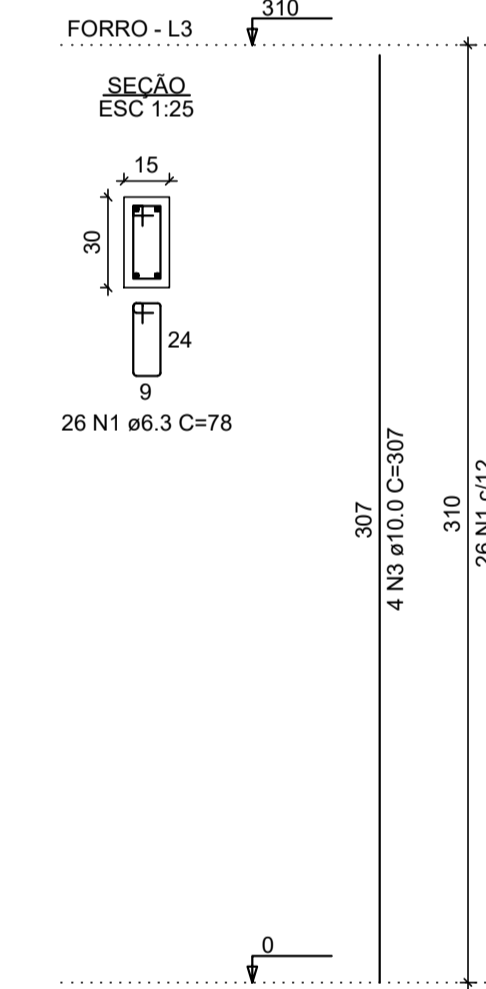
P16



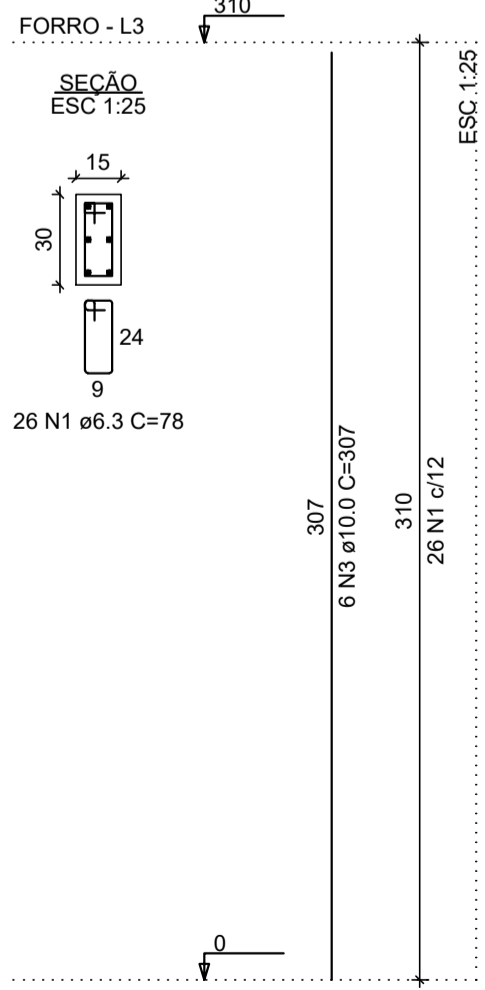
P17



P19=P20



P25



REV.	DATA	DESCRIÇÃO	RESP.
REV. 01	06/11/19	ATENDIMENTO AO RELATÓRIO DE ANÁLISE DO PROTOCOLO 73848/2019	DAC
REV. 00	29/10/19	EMISSÃO INICIAL	DAC
REVISÃO:	DATA :	DESCRIÇÃO:	RESP.:



PROJETO	GERÊNCIA DE PROJETOS	CREA:
 Rua Miguel Vianna, nº 81, Sala 12 Bairro Morro Chic CEP: 37500-080 - Itajubá / MG Tel: (35) 3623-5720 www.dacengenharia.com.br	DENIS DE SOUZA SILVA	CREA: MG-127.216/D
	COORDENAÇÃO DE PROJETOS	
	ALOISIO CAETANO FERREIRA	CREA: MG-97.132/D
	RESPONSÁVEL TÉCNICO	
PROJETO	ENGR. CIVIL FLÁVIA C. BARBOSA	CREA: MG-187.842/D
DESENHO	WILLIAM BARADEL LARI	
	WILLIAM BARADEL LARI	

EMPRESAMENTO	DISCIPLINA
AMPLIAÇÃO DO CEIM LAZARA CASARINI DIANI	ESTRUTURAL
ENDEREÇO	FASE DO PROJETO
RUA FRANCISCO D. DA SILVA - BAIRRO ARISTEU DA C. RIOS	EXECUTIVO
POUSO ALEGRE - MINAS GERAIS	FOLHA Nº.
ASSUNTO	03/06
DETALHAMENTO DOS PILARES	
ARMAÇÃO DOS ELEMENTOS ESTRUTURAIS	
PLANTA BAIXA, CORTES E QUANTITATIVO	
DATA INICIAL	REVISÃO
29/10/2019	INDICADA R01
ARQUIVO	DAC-PMPA-LAZ-PE-EST-R01.DWG