

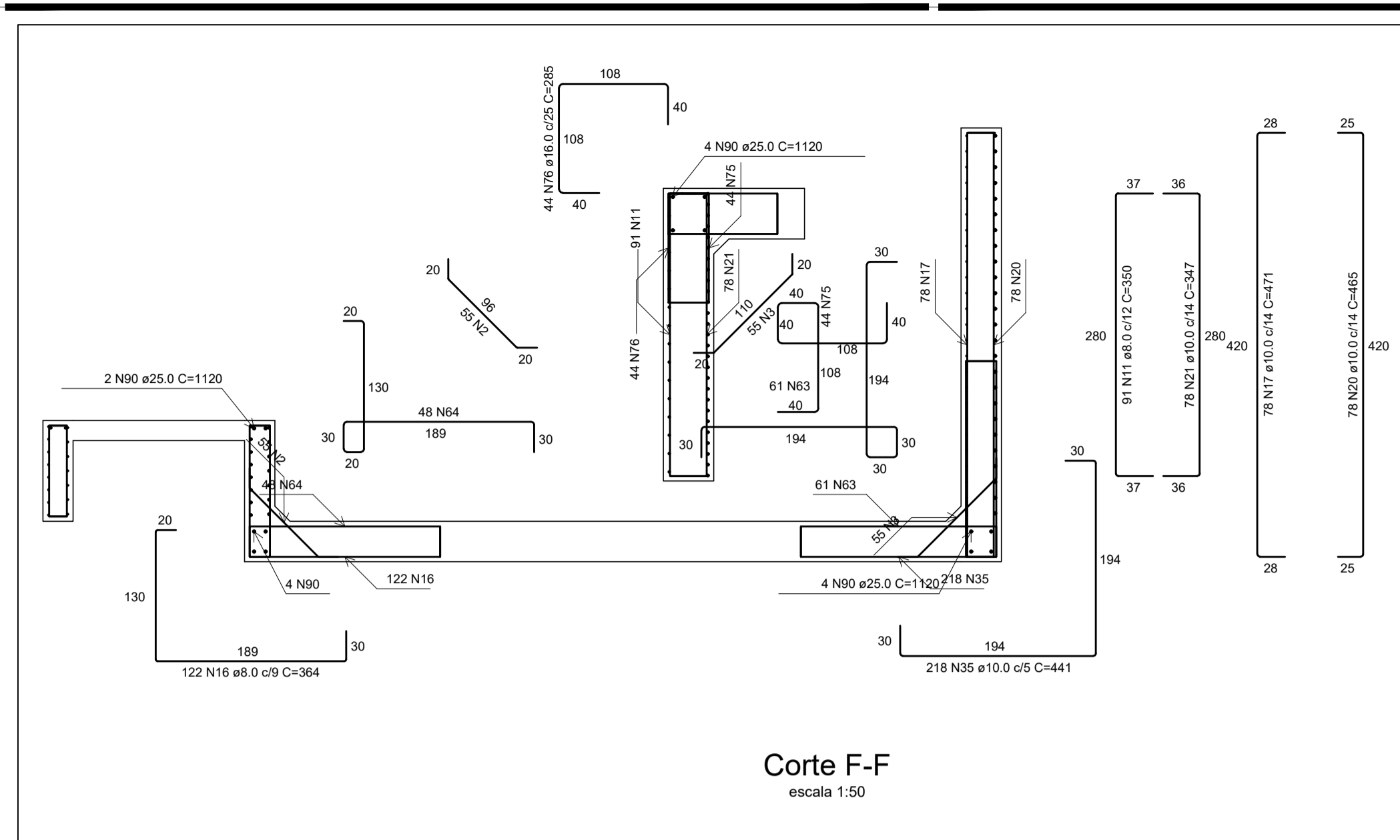
AW	CAÇO	N	DIAM (mm)	QUANT	C.UNIT (cm)	C.TOTAL (cm)
	CA60	1	5.0	100	90	9000
		2	5.0	105	135	14175
		3	5.0	160	149	23880
		4	5.0	50	50	2500
		5	5.0	48	163	7824
		6	5.0	58	14	204
		7	8.0	60	201	12060
		8	8.0	21	739	15519
		9	8.0	21	739	15519
		10	8.0	88	240	21120
		11	8.0	91	350	31850
		12	8.0	58	241	13978
		13	8.0	58	241	13978
		14	8.0	84	312	26208
		15	8.0	171	613	107901
		16	8.0	122	364	44408
		17	10.0	164	240	77244
		18	10.0	86	469	40334
		19	10.0	49	795	38955
		20	10.0	28	465	36270
		21	10.0	78	347	27066
		22	10.0	13	411	5343
		23	10.0	9	407	3663
		24	10.0	25	411	10275
		25	10.0	25	411	10275
		26	10.0	9	411	3699
		27	10.0	13	407	5343
		28	10.0	72	121	8712
		29	10.0	72	121	8712
		30	10.0	27	164	6680
		31	10.0	20	278	5560
		32	10.0	10	250	2500
		33	10.0	30	199	6368
		34	10.0	32	163	5216
		35	10.0	218	441	96138
		36	12.5	59	277	16343
		37	12.5	6	1088	6784
		38	12.5	2	1120	2240
		39	12.5	4	149	596
		40	12.5	47	136	5392
		41	12.5	53	793	42029
		42	12.5	34	1168	39712
		43	12.5	13	767	9971
		44	12.5	13	768	9984
		45	12.5	20	794	15880
		46	12.5	26	1174	30524
		47	12.5	27	276	20424
		48	12.5	33	619	20427
		49	12.5	37	229	8473
		50	12.5	34	229	7786
		51	12.5	14	773	10850
		52	12.5	16	776	12416
		53	12.5	32	307	9824
		54	12.5	26	366	9556
		55	12.5	26	262	6812
		56	12.5	34	331	11254
		57	12.5	74	276	20424
		58	12.5	17	249	4233
		59	12.5	26	224	5824
		60	12.5	26	189	4914
		61	12.5	82	892	55924
		62	12.5	20	627	12540
		63	12.5	61	494	30134
		64	12.5	48	405	19440
		65	16.0	12	319	3828
		66	16.0	49	793	38857
		67	16.0	29	378	10962
		68	16.0	25	618	15450
		69	16.0	16	1193	19088
		70	16.0	14	209	2926
		71	16.0	8	380	3040
		72	16.0	58	352	20416
		73	16.0	14	625	8750
		74	16.0	2	1450	2900
		75	16.0	44	358	15752
		76	16.0	44	285	12540
		77	16.0	27	1188	32076
		78	20.0	22	223	4908
		79	20.0	29	223	6467
		80	20.0	7	1148	8036
		81	20.0	8	1148	9184
		82	20.0	8	150	1200
		83	25.0	53	788	41764
		84	25.0	26	1165	30290
		85	25.0	40	420	16800
		86	25.0	16	380	6080
		87	25.0	8	455	3640
		88	25.0	8	150	1200
		89	25.0	8	205	1640
		90	25.0	14	1120	15680

RESUMO DO AÇO

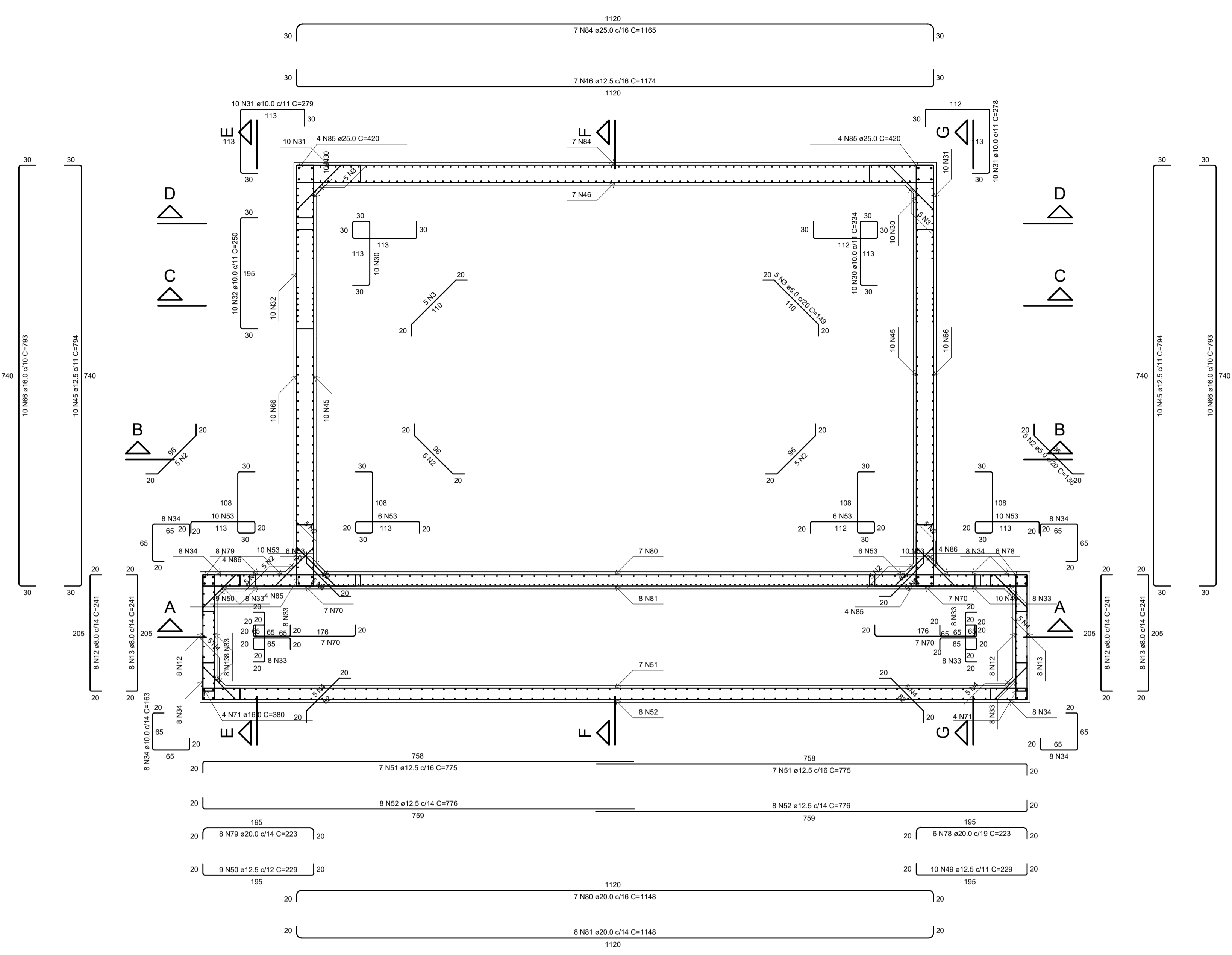
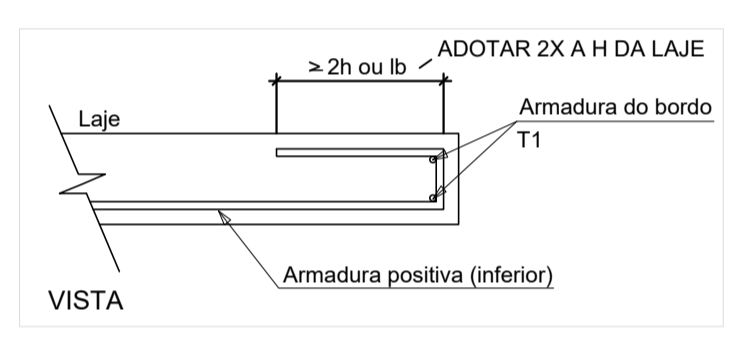
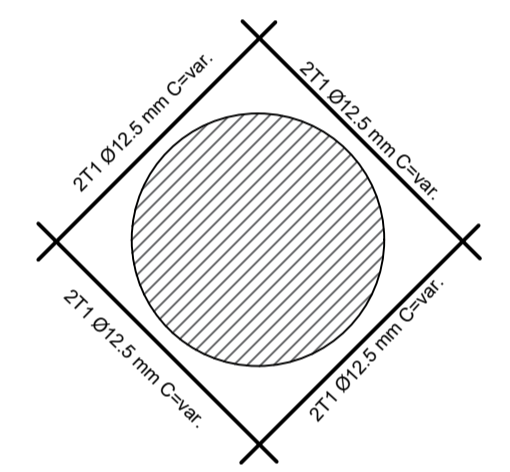
AÇO	DIAM (mm)	C.TOTAL (m)	QUANT + 10% (Barras)	PESO + 10% (kg)
CA50	8.0	3054	280	1325.6
	10.0	3983.2	366	2701.4
	12.5	4902.8	450	5195.4
	16.0	1545.4	142	2683
	20.0	618.7	57	1678.4
	25.0	1110.9	108	4963.3
CA60	5.0	6223	-	105.5

PESO TOTAL (kg)
CA50 18547
CA60 105.5

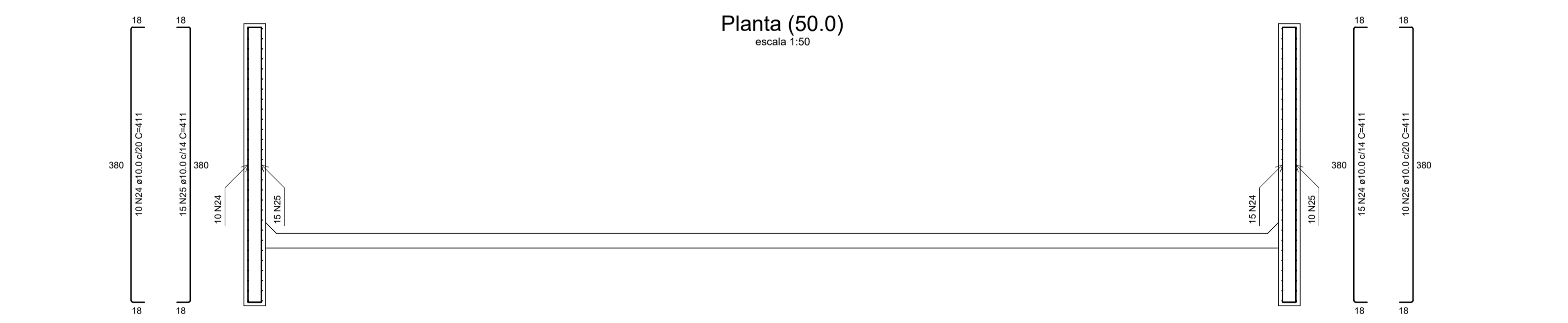
Volume de concreto (C-40) = 109.45 m³
Área de forma = 408.11 m²



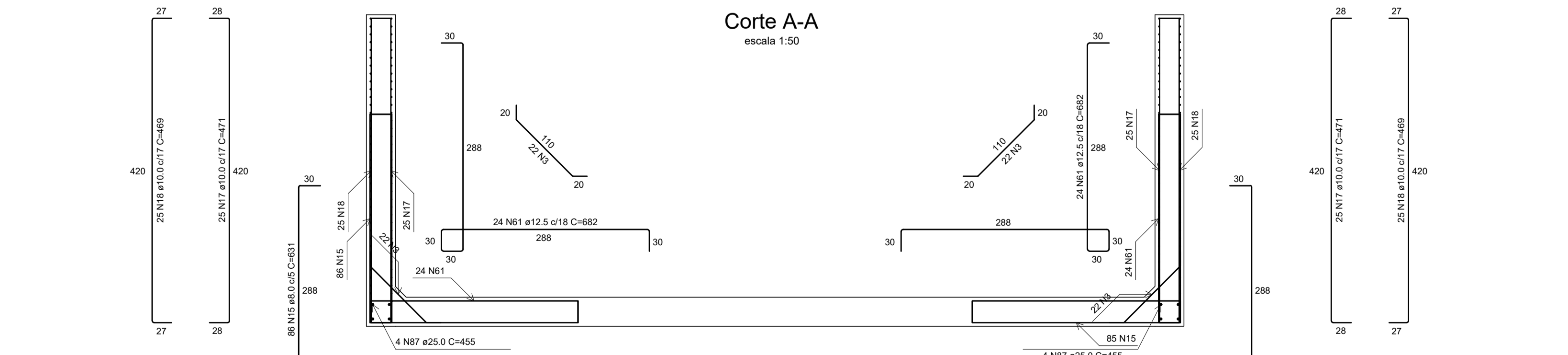
DETALHE DA ARMADURA NAS ABERTURAS DAS PAREDES



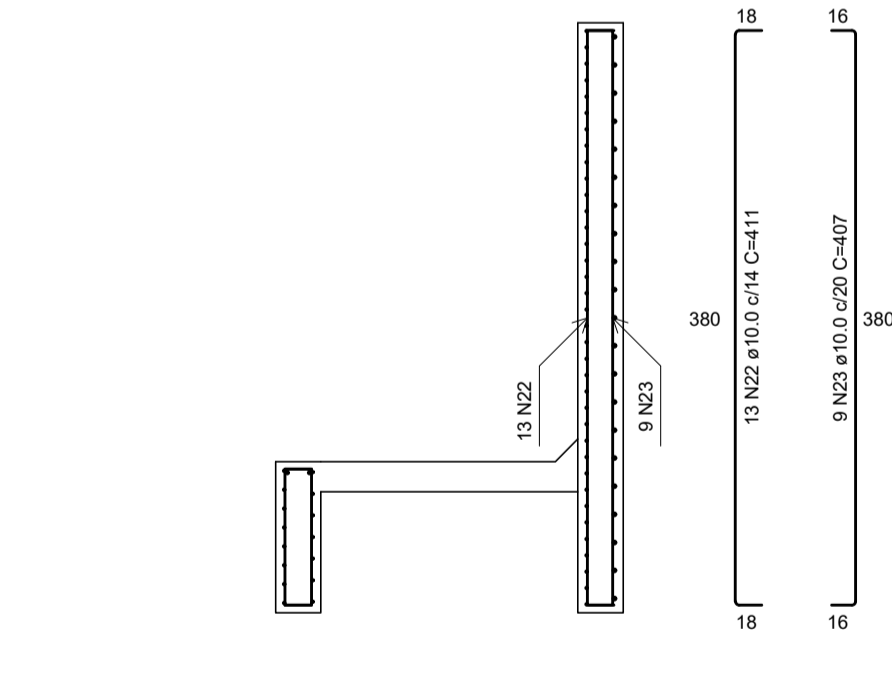
Planta (50.0) escala 1:50



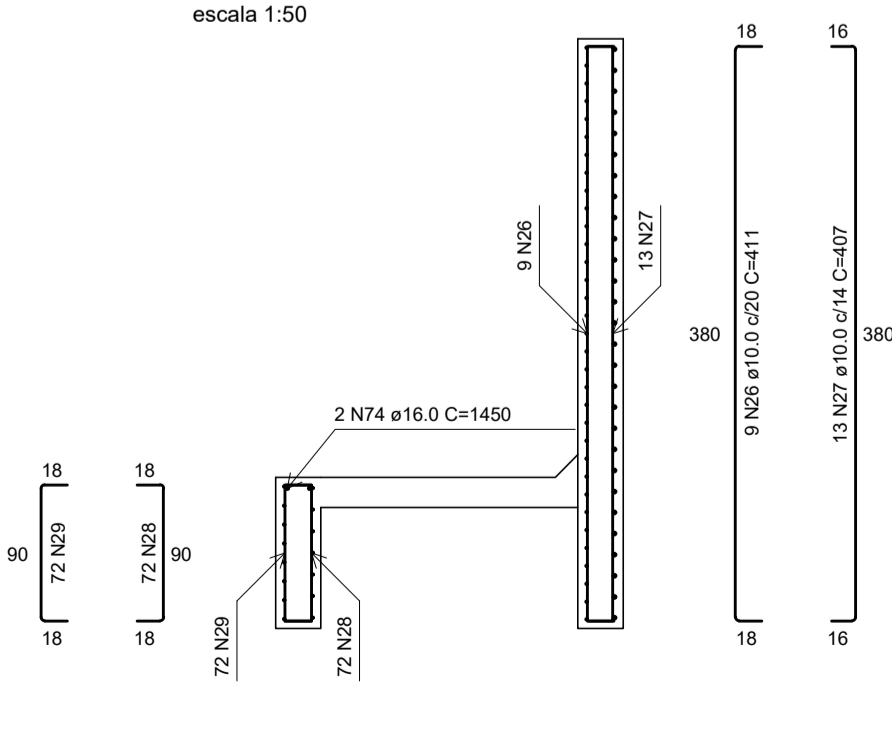
Corte A-A escala 1:50



Corte B-B escala 1:50



Corte G-G escala 1:50



Corte E-E escala 1:50

REV.	DATA	DESCRIÇÃO	RESP.
REV. 02	29/11/19	REVISÃO GERAL ATENDENDO AO 2º PARECER TÉCNICO DA SARSAN ENGENHARIA	DAC
REV. 01	08/11/19	REVISÃO GERAL	DAC
REV. 00	02/08/19	EMISSÃO INICIAL	DAC
REVISÃO: DATA : DESCRIÇÃO:			RESP.:

CLIENTE

Prefeitura Municipal de Pouso Alegre

PROJETO

DAC Engenharia

Rua Miguel Vianna, nº 81, Sala 12
Bairro Morro Chic.
CEP: 37500-080 - Itajubá / MG
Tel: (35) 3623-5720
www.dacengenharia.com.br

GERÊNCIA DE PROJETOS
FLÁVIA C. BARBOSA

COORDENAÇÃO DE PROJETOS
ALOSIO CAETANO FERREIRA CREA: MG-97.132/D

RESPONSÁVEL TÉCNICO
ENGR. DENIS DE SOUZA SILVA CREA: MG-127.216/D

PROJETO:
WILLIAM BARADEL LARI

DESENHO:
WILLIAM BARADEL LARI

EMPREENDIMENTO

PROJETO EXECUTIVO DE DRENAGEM URBANA

ENDEREÇO
CENTRO, JARDIM PRIMAVERA
POUSO ALEGRE - MINAS GERAIS

DISCIPLINA
DRENAGEM

FASE DO PROJETO
EXECUTIVO

FOLHA Nº. **068**