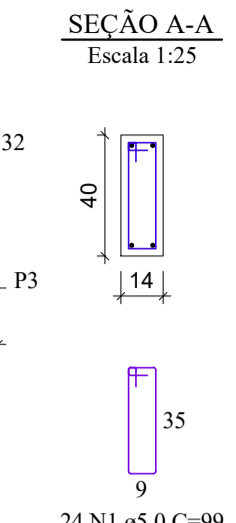
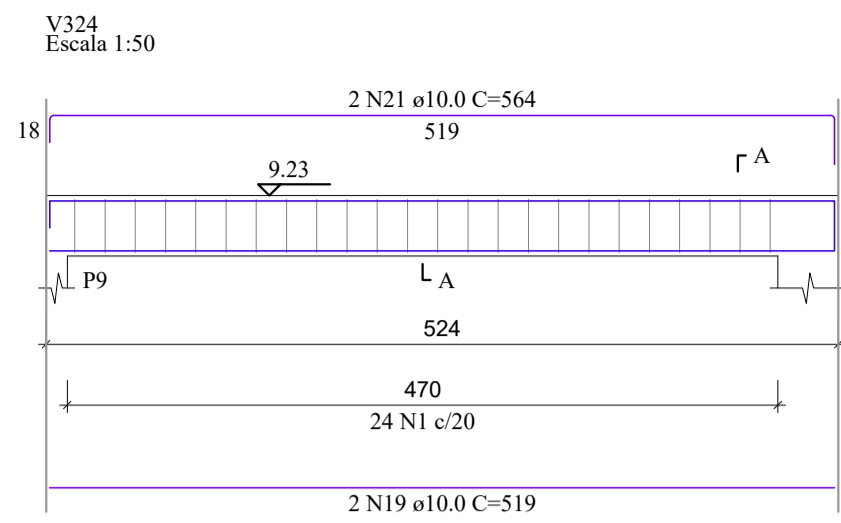
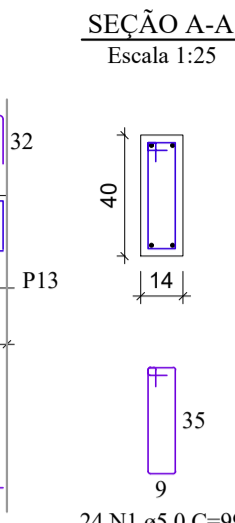
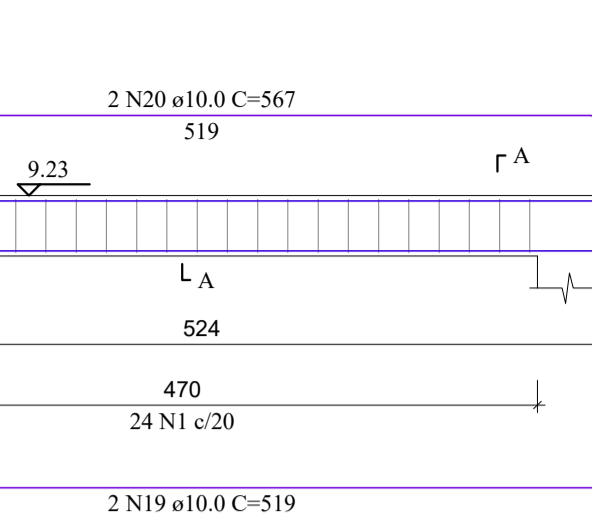
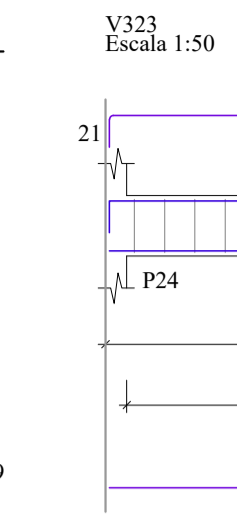
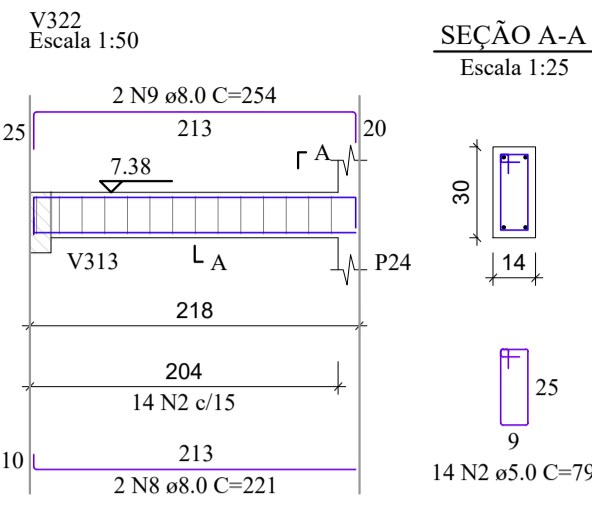
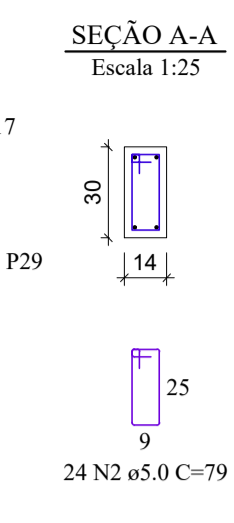
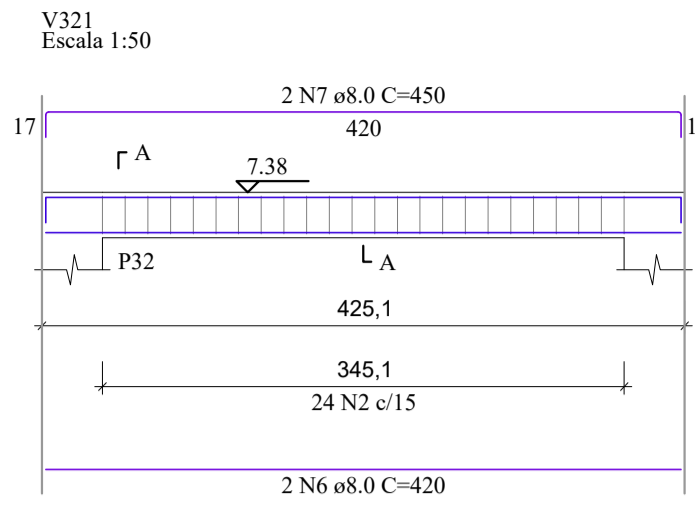
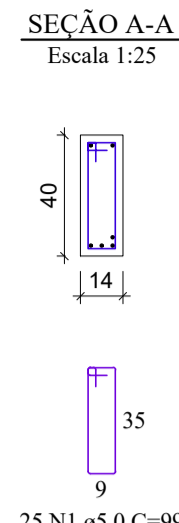
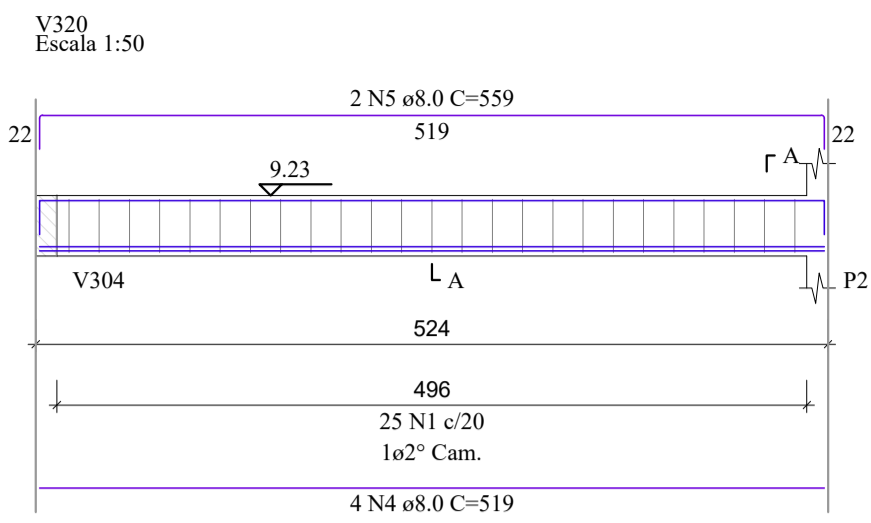


PROJETO ESTRUTURAL - ESCOLA CIDADE JARDIM

Escala Indicada



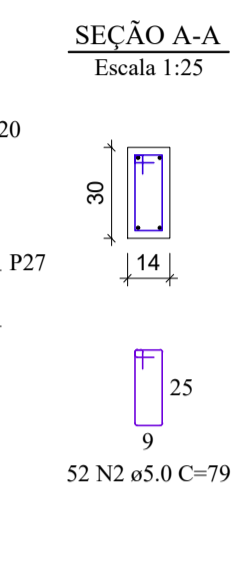
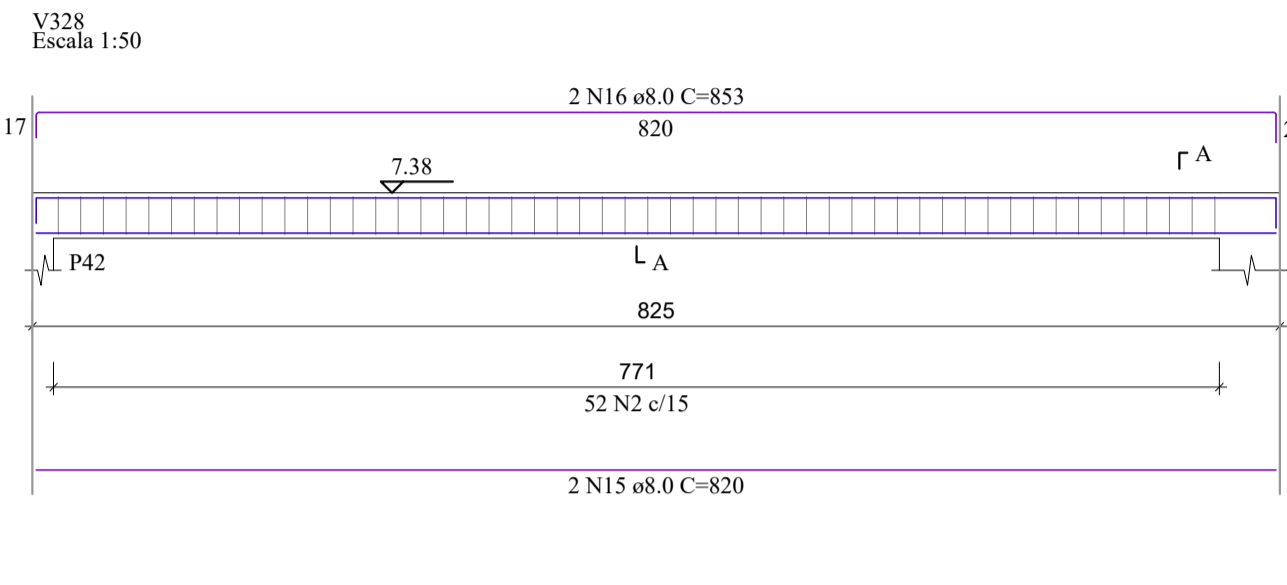
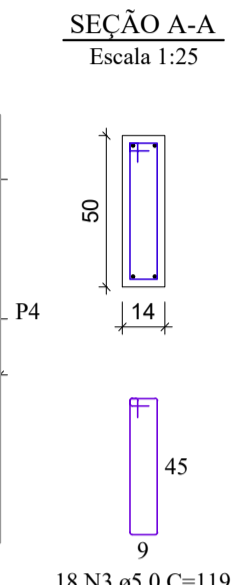
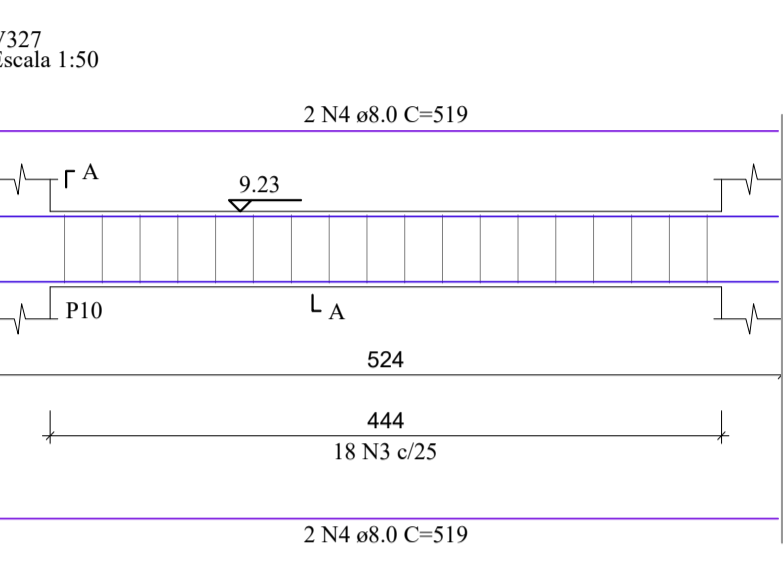
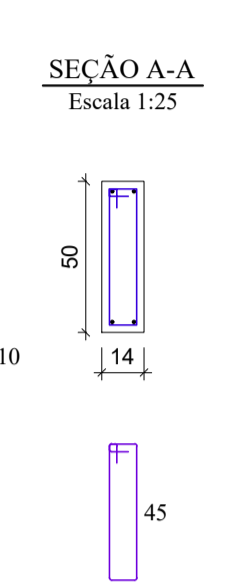
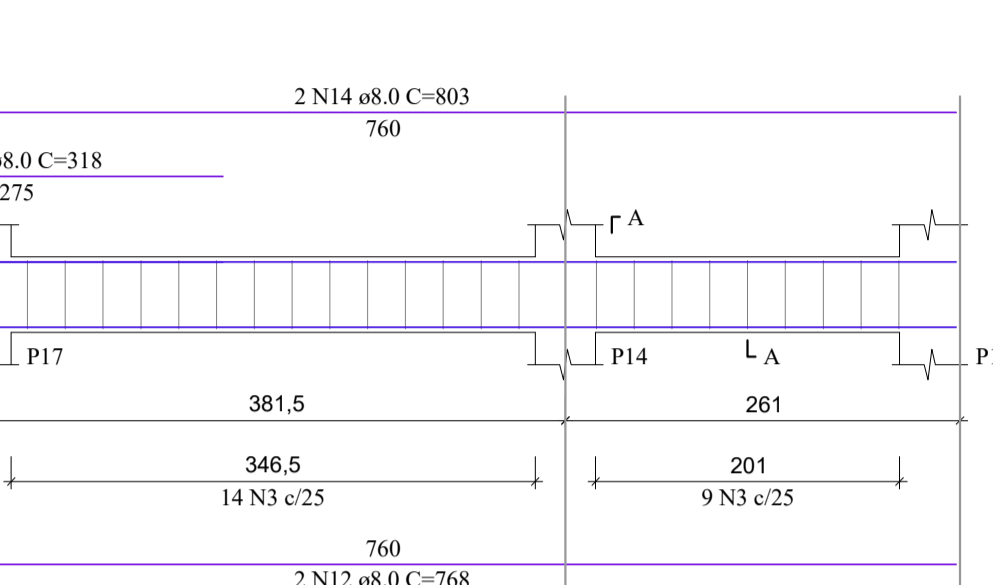
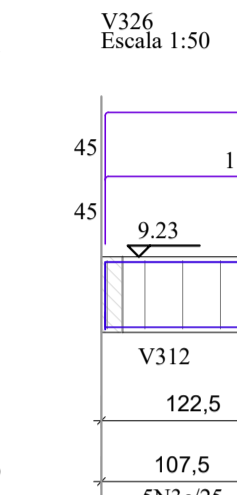
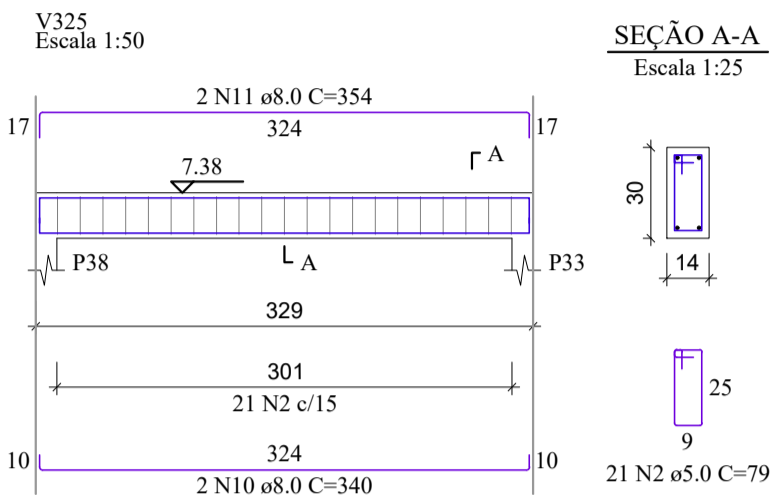
RELAÇÃO DO AÇO

| AÇO  | N  | DIAM (mm) | QUANT | C.UNIT (cm) | C.TOTAL (cm) |
|------|----|-----------|-------|-------------|--------------|
| V320 | 1  | 5.0       | 73    | 99          | 7227         |
| V320 | 2  | 5.0       | 127   | 79          | 10033        |
| V320 | 3  | 5.0       | 46    | 119         | 5474         |
| V320 | 4  | 8.0       | 8     | 519         | 4152         |
| V320 | 5  | 8.0       | 2     | 559         | 1118         |
| V320 | 6  | 8.0       | 2     | 420         | 840          |
| V320 | 7  | 8.0       | 2     | 450         | 900          |
| V320 | 8  | 8.0       | 2     | 221         | 442          |
| V320 | 9  | 8.0       | 2     | 254         | 508          |
| V320 | 10 | 8.0       | 2     | 340         | 680          |
| V320 | 11 | 8.0       | 2     | 354         | 708          |
| V320 | 12 | 8.0       | 2     | 768         | 1536         |
| V320 | 13 | 8.0       | 2     | 318         | 636          |
| V320 | 14 | 8.0       | 2     | 803         | 1606         |
| V320 | 15 | 8.0       | 2     | 820         | 1640         |
| V320 | 16 | 8.0       | 2     | 853         | 1706         |
| V320 | 17 | 8.0       | 2     | 286         | 572          |
| V320 | 18 | 8.0       | 2     | 308         | 616          |
| V320 | 19 | 10.0      | 4     | 519         | 2076         |
| V320 | 20 | 10.0      | 2     | 567         | 1134         |
| V320 | 21 | 10.0      | 2     | 564         | 1128         |

RESUMO DO AÇO

| AÇO             | DIAM (mm) | C.TOTAL (m) | PESO + 10% (kg) |
|-----------------|-----------|-------------|-----------------|
| CA50            | 8.0       | 173.4       | 75.3            |
| CA60            | 10.0      | 43.4        | 29.4            |
| CA60            | 5.0       | 227.3       | 38.5            |
| PESO TOTAL (kg) |           |             |                 |
| CA50            |           | 104.7       |                 |
| CA60            |           | 38.5        |                 |

Volume de concreto (C-30) = 2.66 m³  
Área de forma = 44.86 m²



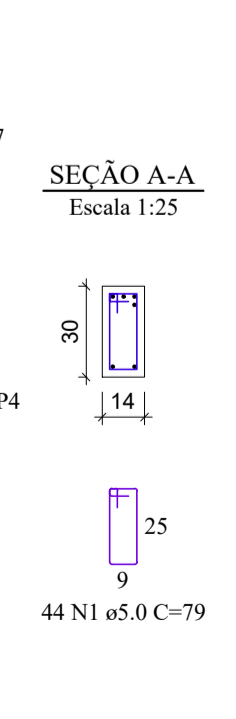
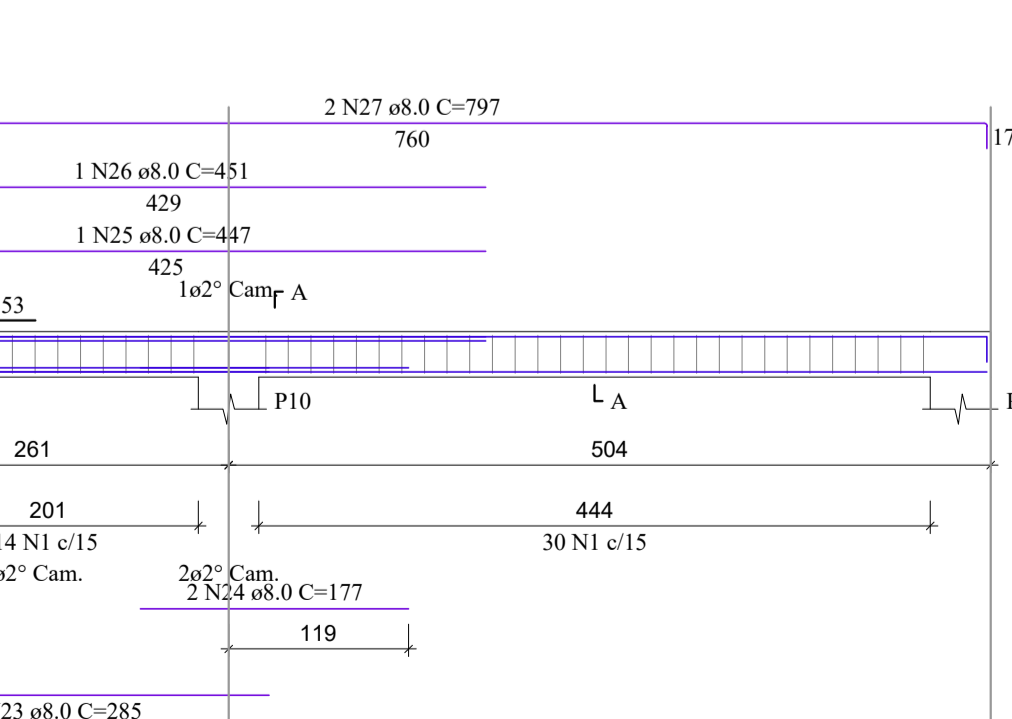
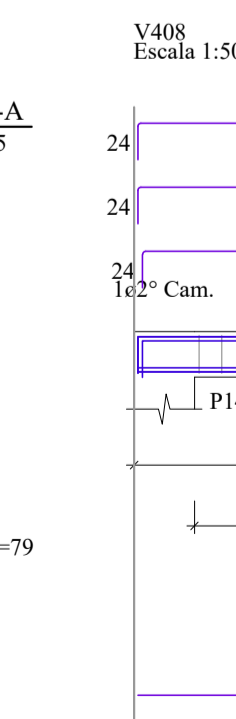
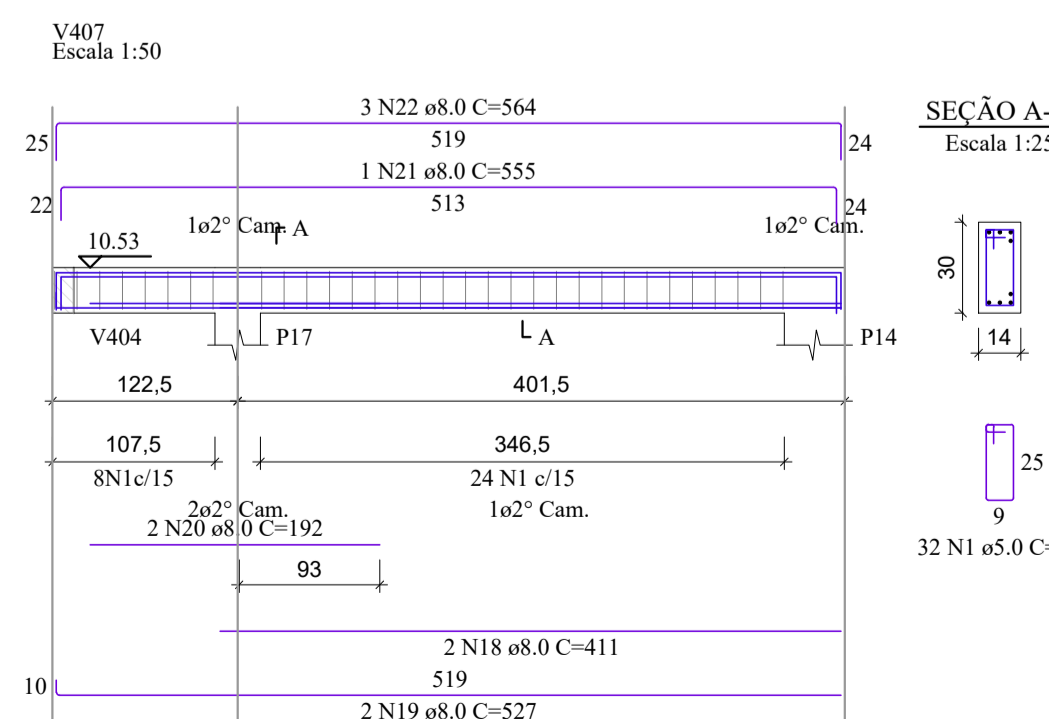
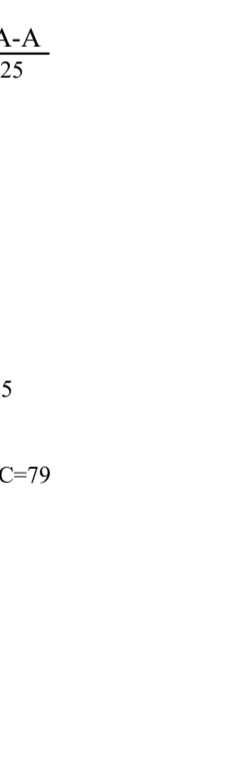
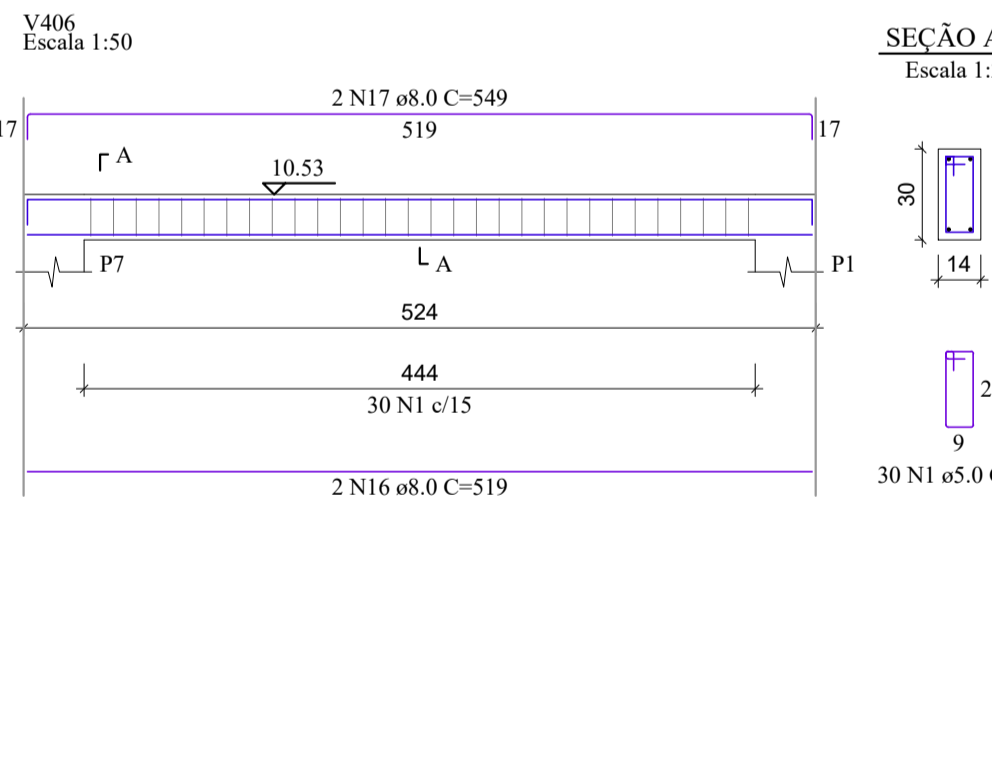
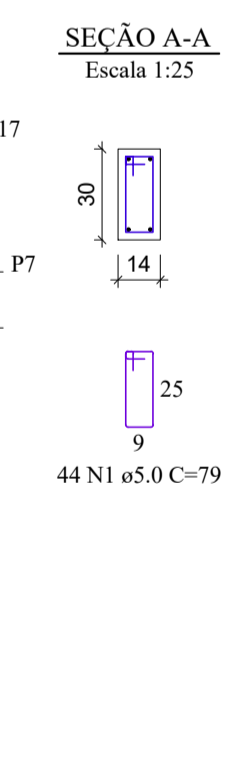
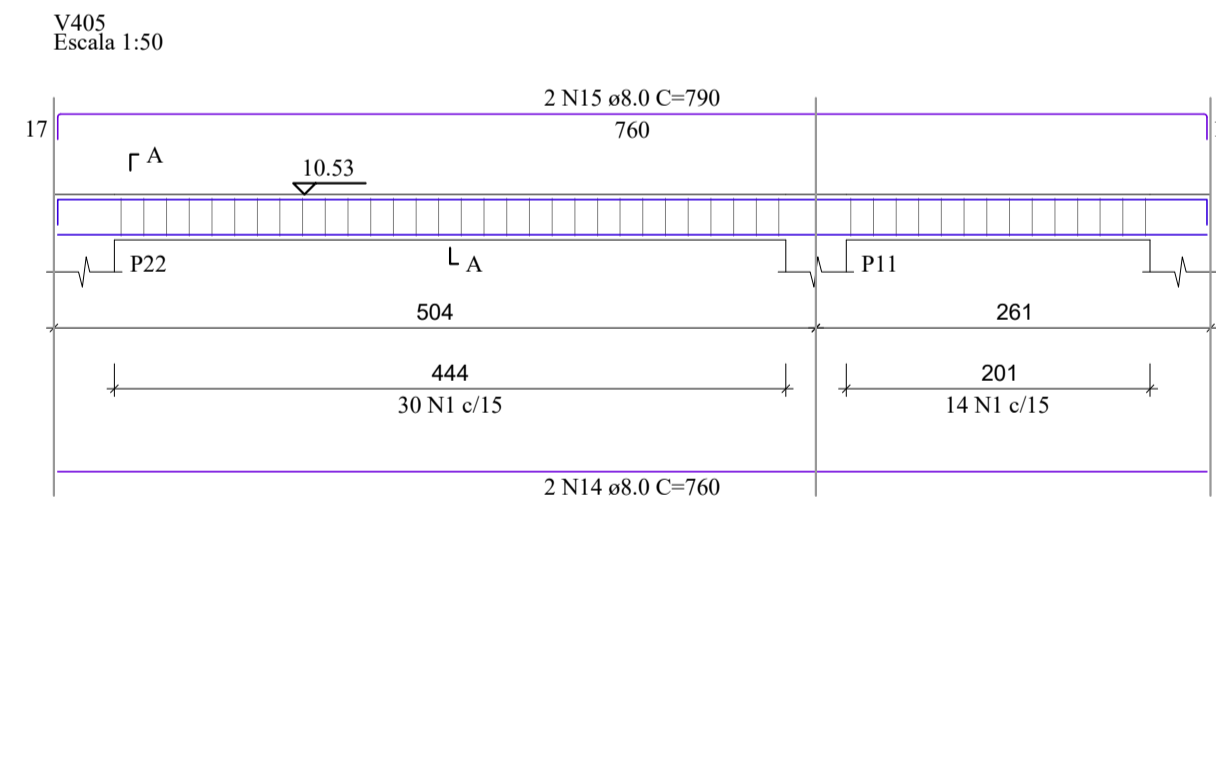
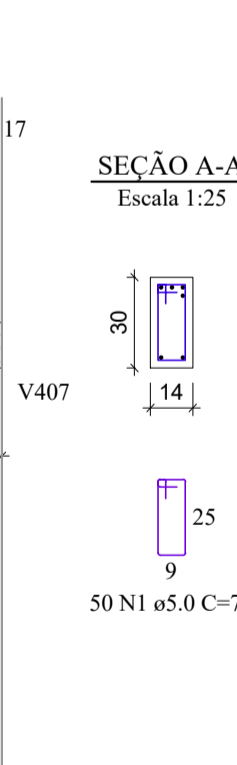
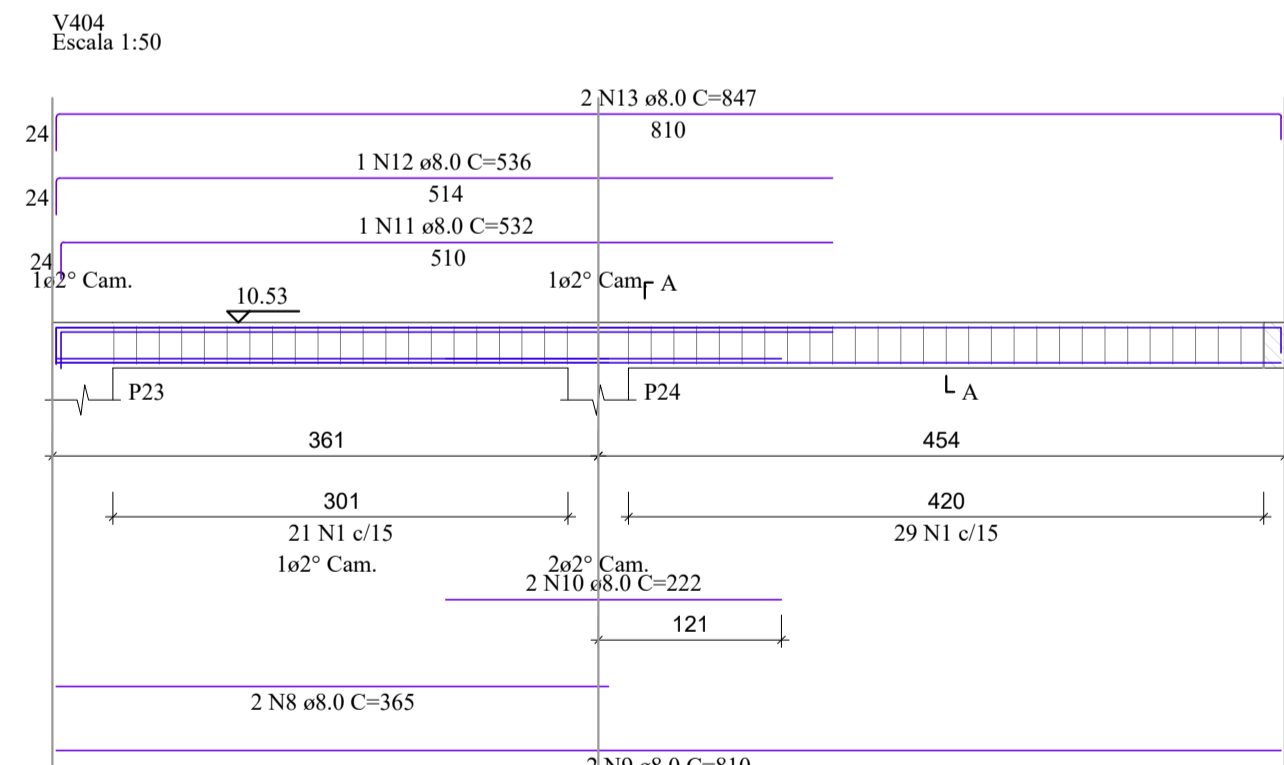
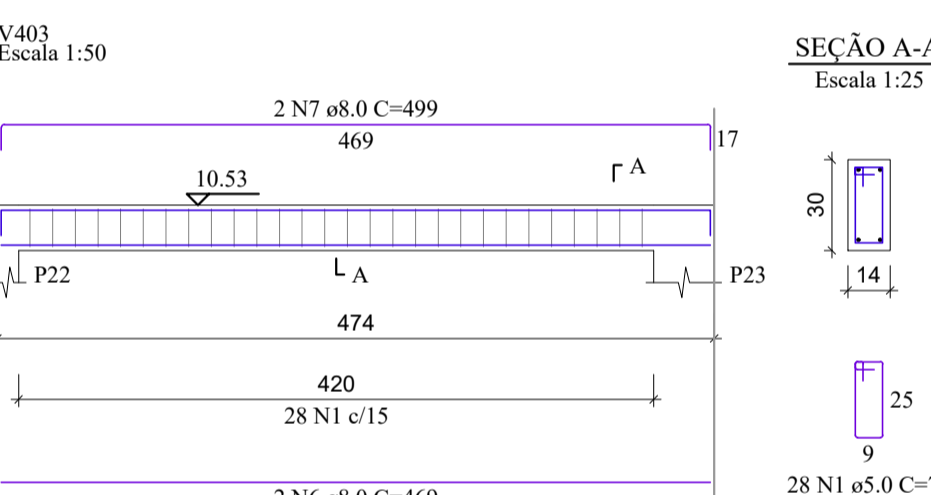
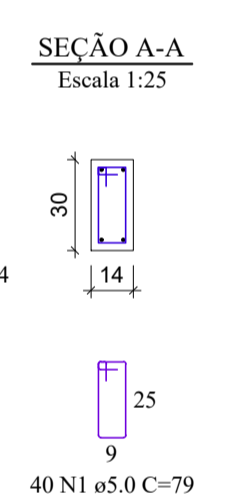
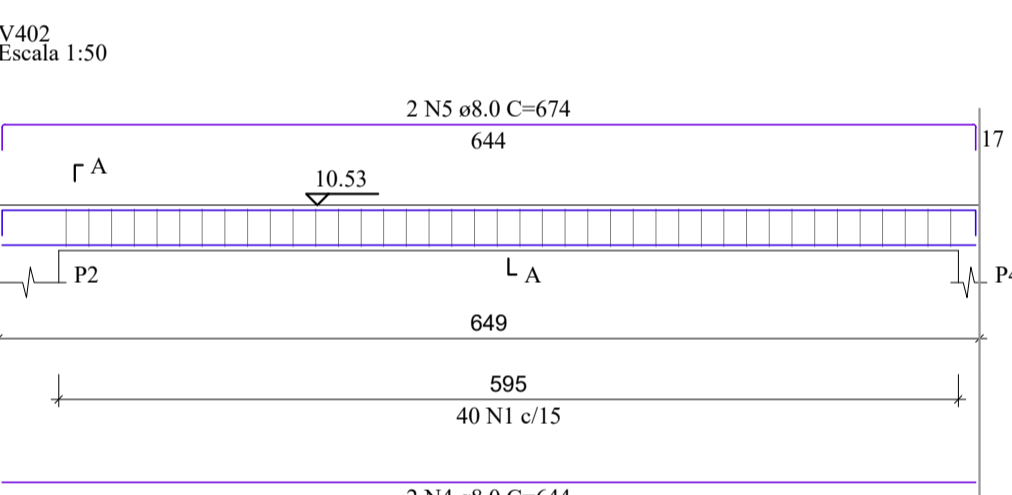
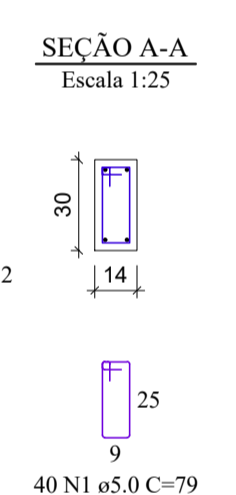
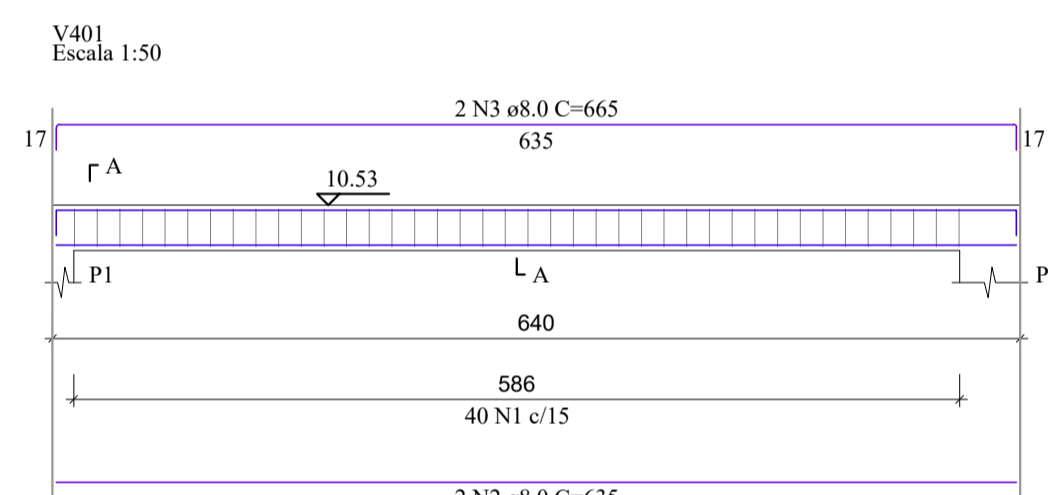
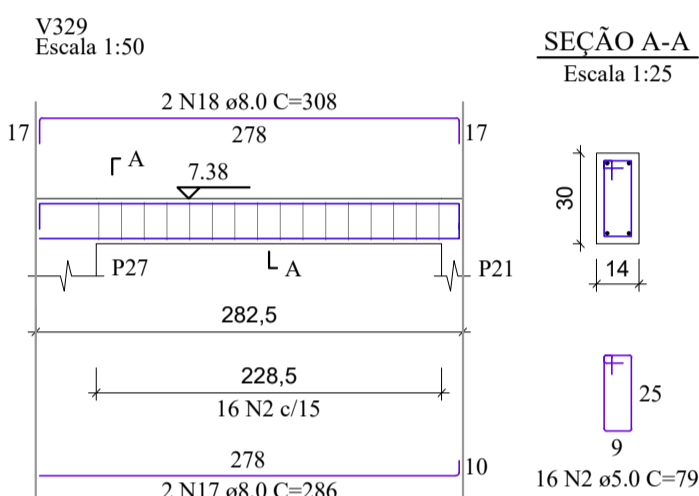
RELAÇÃO DO AÇO

| AÇO  | N  | DIAM (mm) | QUANT | C.UNIT (cm) | C.TOTAL (cm) |
|------|----|-----------|-------|-------------|--------------|
| V401 | 1  | 5.0       | 308   | 79          | 24322        |
| V401 | 2  | 8.0       | 2     | 635         | 1270         |
| V401 | 3  | 8.0       | 2     | 665         | 1330         |
| V401 | 4  | 8.0       | 2     | 644         | 1288         |
| V401 | 5  | 8.0       | 2     | 674         | 1348         |
| V401 | 6  | 8.0       | 2     | 469         | 938          |
| V401 | 7  | 8.0       | 2     | 499         | 998          |
| V401 | 8  | 8.0       | 2     | 365         | 730          |
| V401 | 9  | 8.0       | 2     | 810         | 1620         |
| V401 | 10 | 8.0       | 2     | 222         | 444          |
| V401 | 11 | 8.0       | 1     | 532         | 532          |
| V401 | 12 | 8.0       | 1     | 536         | 536          |
| V401 | 13 | 8.0       | 2     | 847         | 1694         |
| V401 | 14 | 8.0       | 4     | 760         | 3040         |
| V401 | 15 | 8.0       | 2     | 790         | 1580         |
| V401 | 16 | 8.0       | 2     | 519         | 1038         |
| V401 | 17 | 8.0       | 2     | 549         | 1098         |
| V401 | 18 | 8.0       | 2     | 411         | 822          |
| V401 | 19 | 8.0       | 2     | 527         | 1054         |
| V401 | 20 | 8.0       | 2     | 192         | 384          |
| V401 | 21 | 8.0       | 1     | 555         | 555          |
| V401 | 22 | 8.0       | 3     | 564         | 1692         |
| V401 | 23 | 8.0       | 2     | 285         | 570          |
| V401 | 24 | 8.0       | 2     | 177         | 354          |
| V401 | 25 | 8.0       | 1     | 447         | 447          |
| V401 | 26 | 8.0       | 1     | 451         | 451          |
| V401 | 27 | 8.0       | 2     | 797         | 1594         |

RESUMO DO AÇO

| AÇO             | DIAM (mm) | C.TOTAL (m) | PESO + 10% (kg) |
|-----------------|-----------|-------------|-----------------|
| CA50            | 8.0       | 274.1       | 119             |
| CA60            | 5.0       | 243.3       | 41.3            |
| PESO TOTAL (kg) |           |             |                 |
| CA50            |           | 119         |                 |
| CA60            |           | 41.3        |                 |

Volume de concreto (C-30) = 2.17 m³  
Área de forma = 38.15 m²



|                 |           |                                |        |
|-----------------|-----------|--------------------------------|--------|
| REV. 03         | 23/04/21  | INSERÇÃO DE MICTÓRIOS          | DAC    |
| REV. 02         | 18/03/21  | ALTERAÇÃO DO ACESSO DE SERVIÇO | DAC    |
| REV. 01         | 16/12/20  | ALTERAÇÃO DE LAYOUT            | DAC    |
| REV. 00         | 27/11/20  | EMIÇÃO INICIAL                 | DAC    |
| REVISÃO: DATA : | DESCRÇÃO: |                                | RESP.: |

CLIENTE

Prefeitura Municipal de Pouso Alegre

PROJETO

DAC Engenharia

Rua Miguel Vianna, nº 81, Sala 12  
Bairro Morro Chic  
CEP: 37500-080 - Itajubá / MG  
Tel: (35) 3623-5720  
www.dacengenharia.com.br

EMPREENHIMENTO

**IMPLANTAÇÃO DA ESCOLA CIDADE JARDIM**

ENDEREÇO: AVENIDA CAMILO DE BARROS LARIAIA, POUSO ALEGRE - MINAS GERAIS

ASSUNTO: PROJETO DE ESTRUTURA EM CONCRETO ARMADO - PRÉDIO B, DETALHAMENTO DAS ARMADURAS, VIGAS

GERÊNCIA DE PROJETOS: DENIS DE SOUZA SILVA (CREA: MG-127.216/D)

COORDENAÇÃO DE PROJETOS: ALOISIO CAETANO FERREIRA (CREA: MG-97.132/D)

RESPONSÁVEL TÉCNICO: ENG. CIVIL FLÁVIA C. BARBOSA (CREA: MG-187.842/D)

PROJETO: ENG. SC. WILLIAM BARADEL LARI

DESENHO: ENG. SC. WILLIAM BARADEL LARI

DISCIPLINA: ESTRUTURAL

FASE DO PROJETO: EXECUTIVO

FOLHA Nº: 43/49

|              |          |         |                             |
|--------------|----------|---------|-----------------------------|
| DATA INICIAL | ESCALA   | REVISÃO | ARQUIVO                     |
| 27/11/2020   | INDICADA | R02     | DAC-PMPA-JAR-PE-EST-R03.DWG |