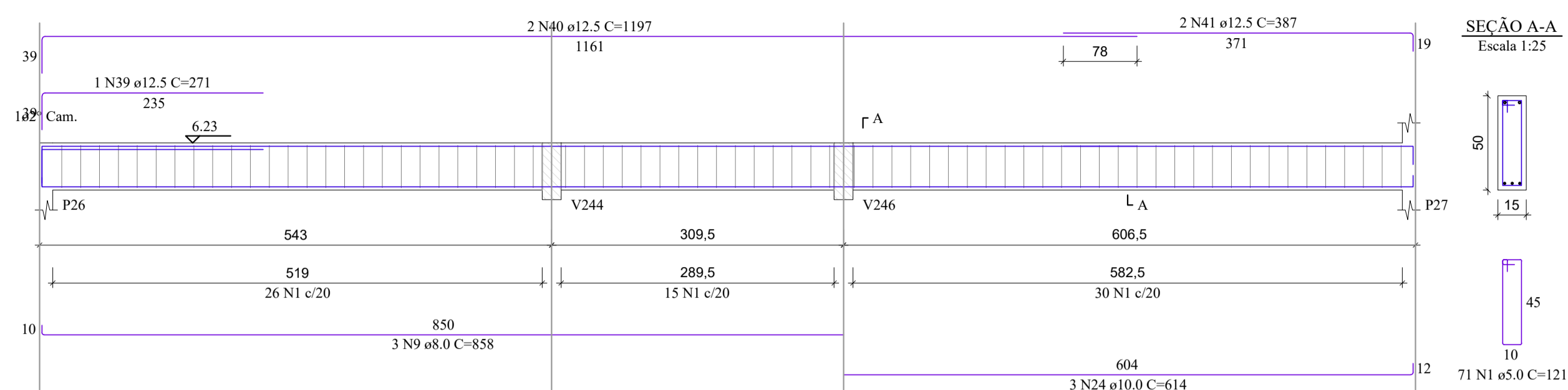
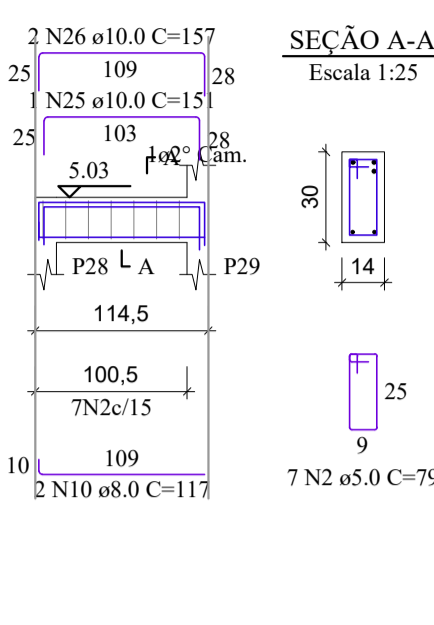


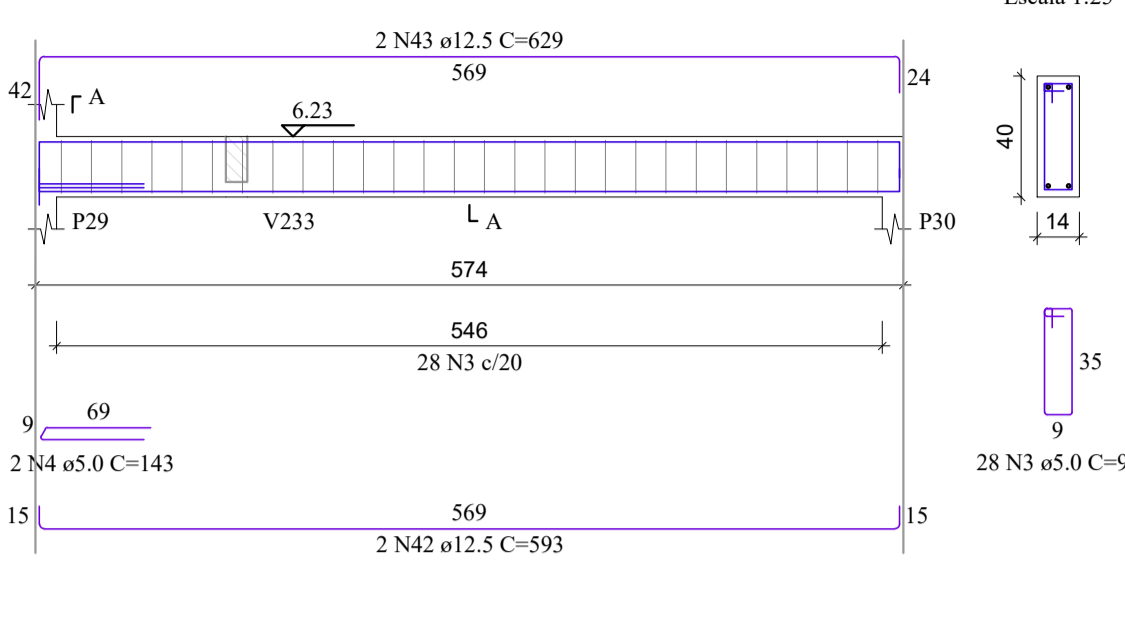
V216
Escala 1:50



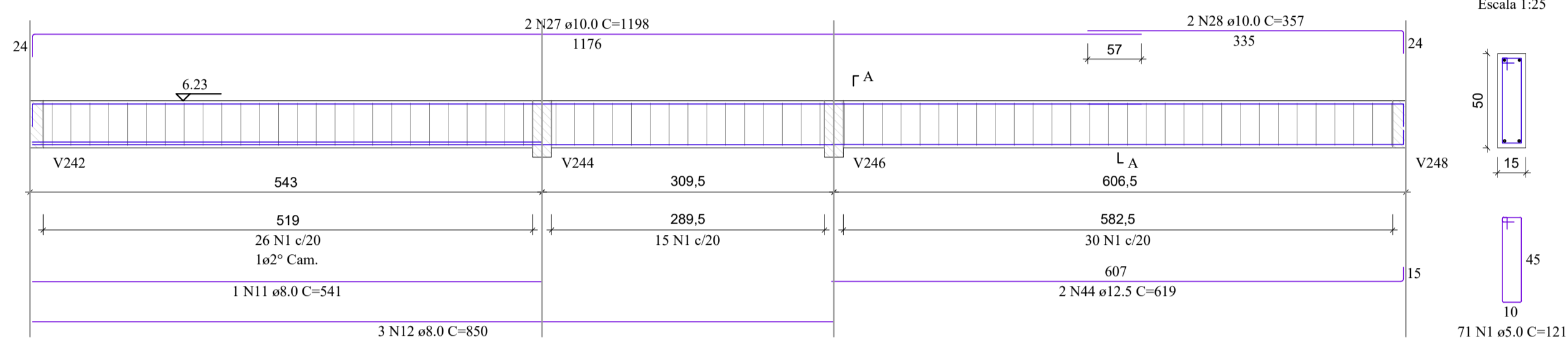
V217
Escala 1:50



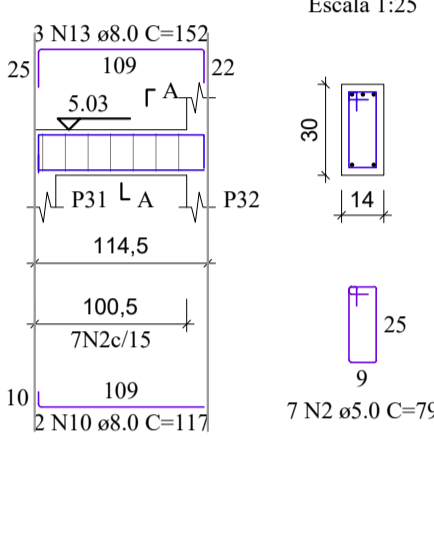
V218
Escala 1:50



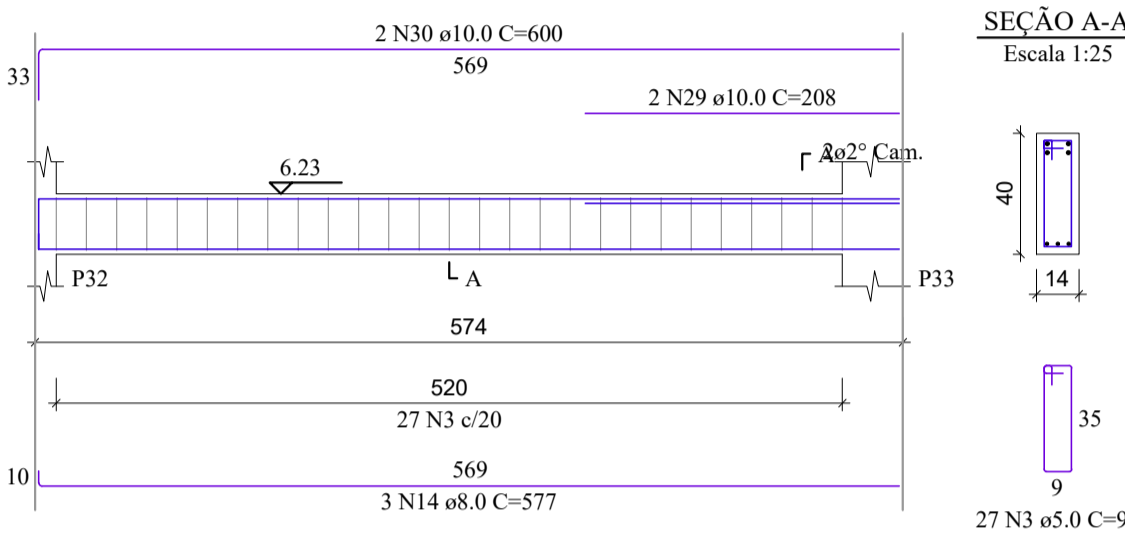
V219
Escala 1:50



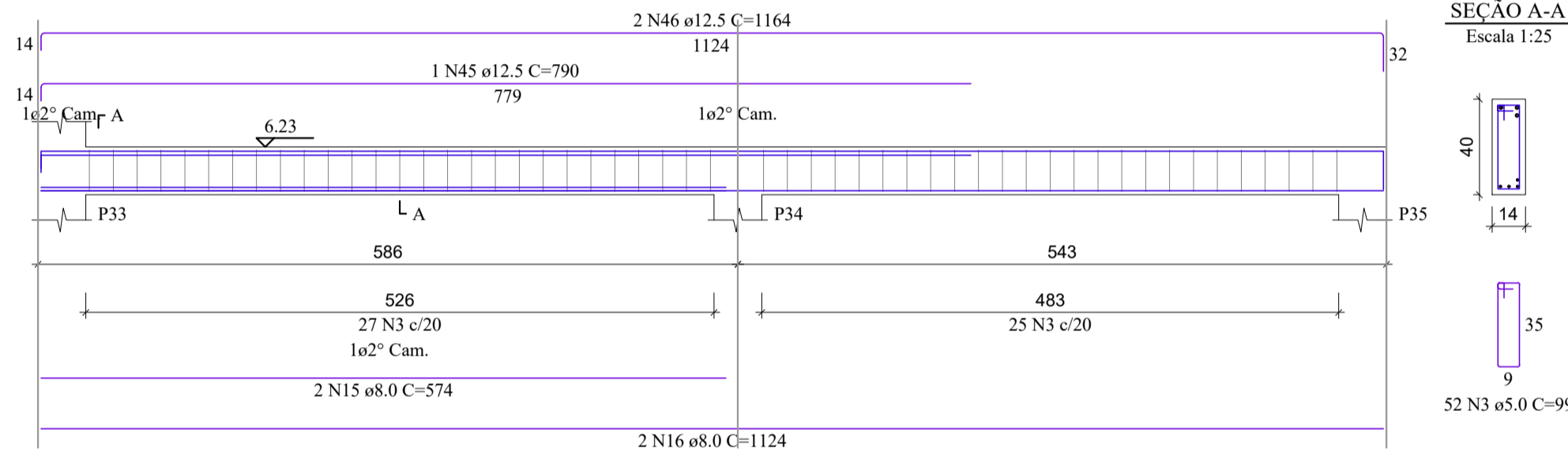
V220
Escala 1:50



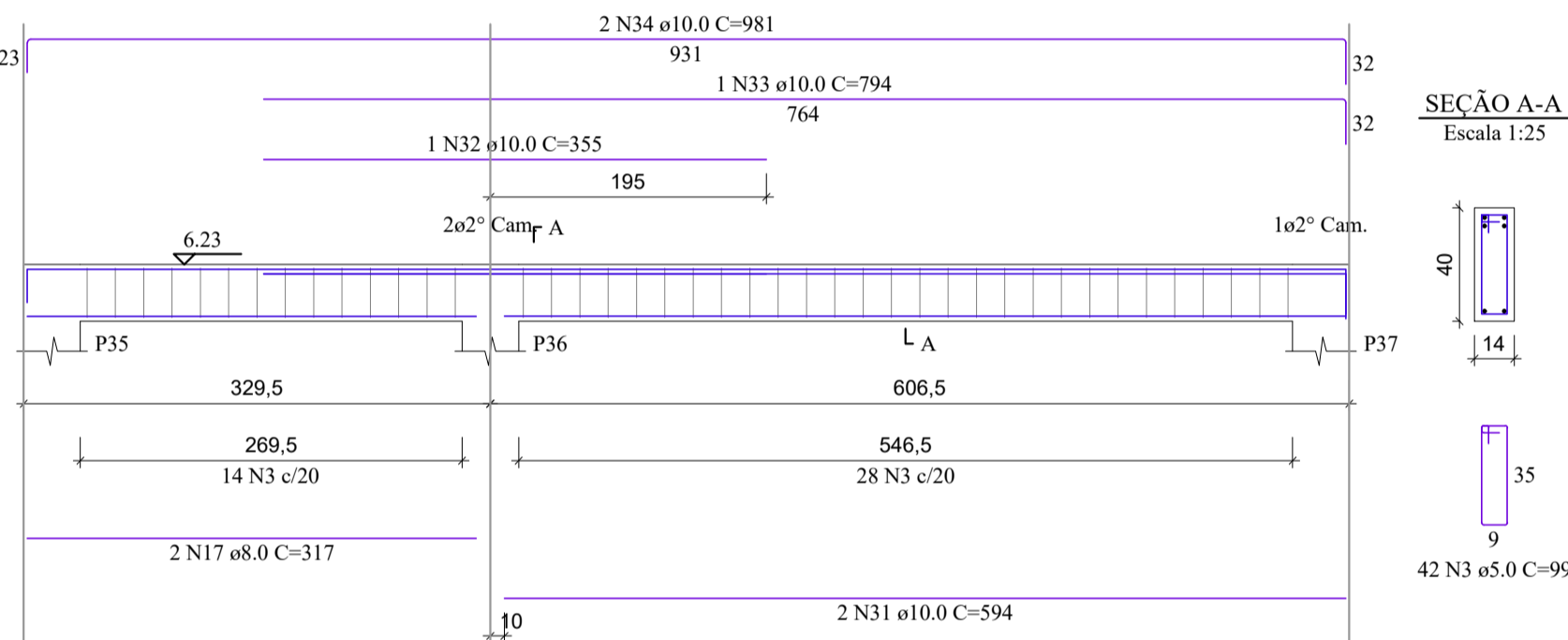
V221
Escala 1:50



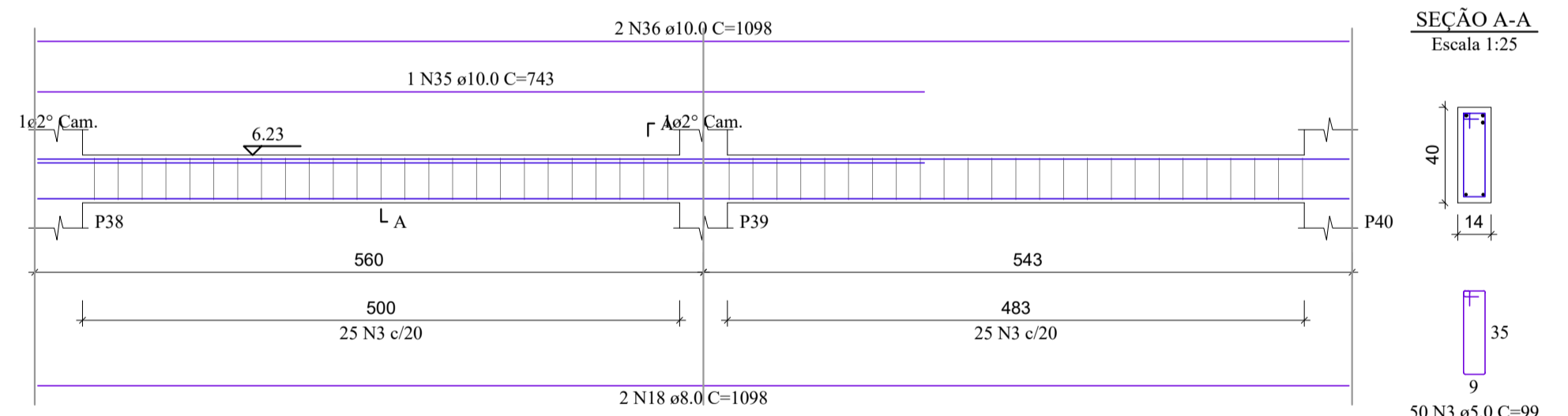
V222
Escala 1:50



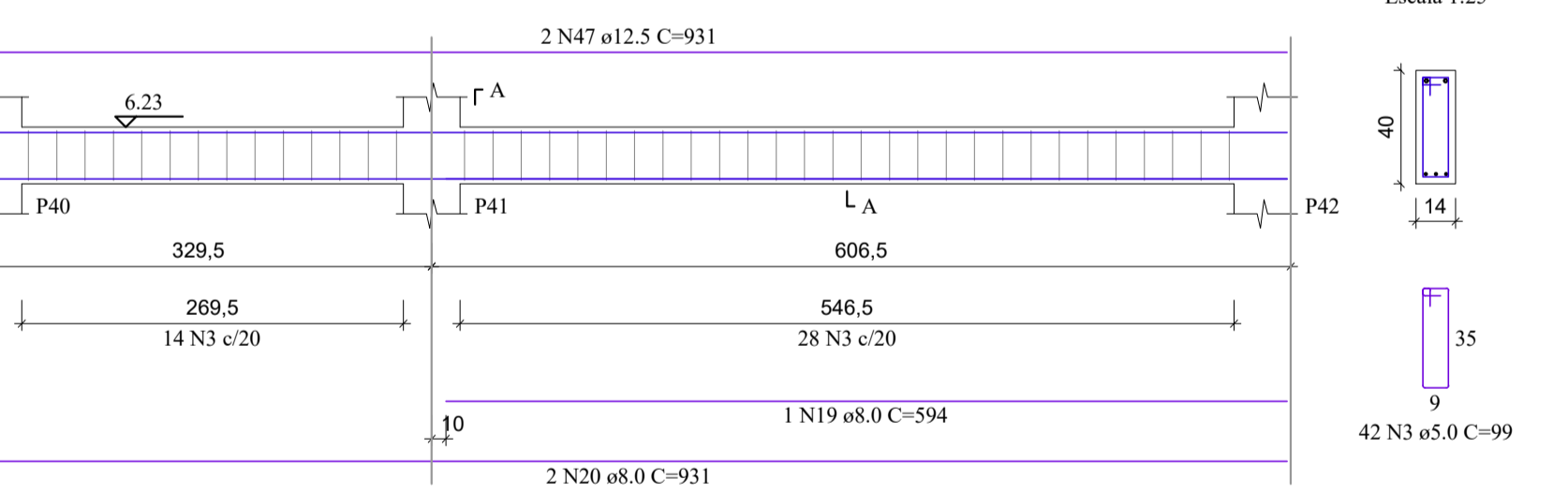
V223
Escala 1:50



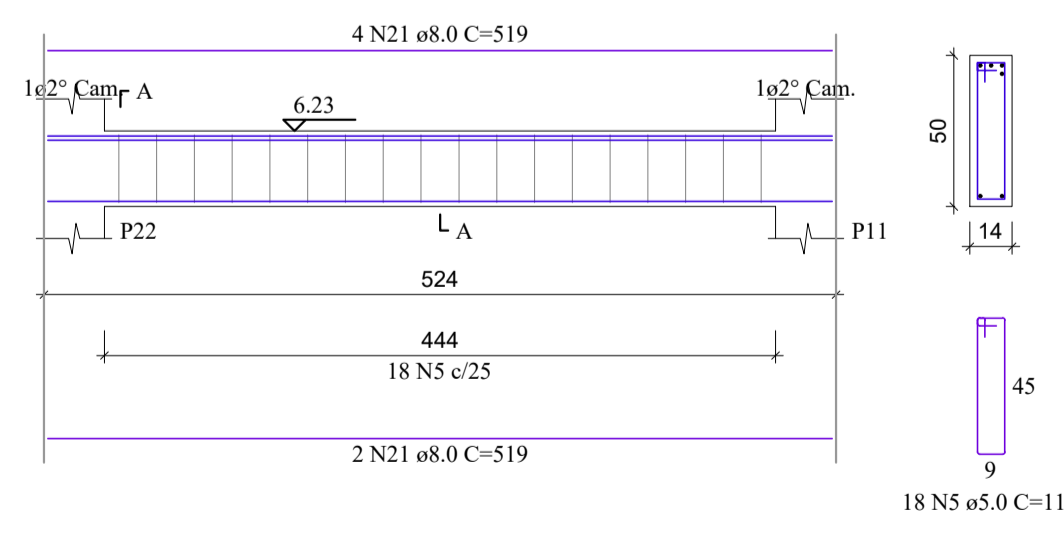
V224
Escala 1:50



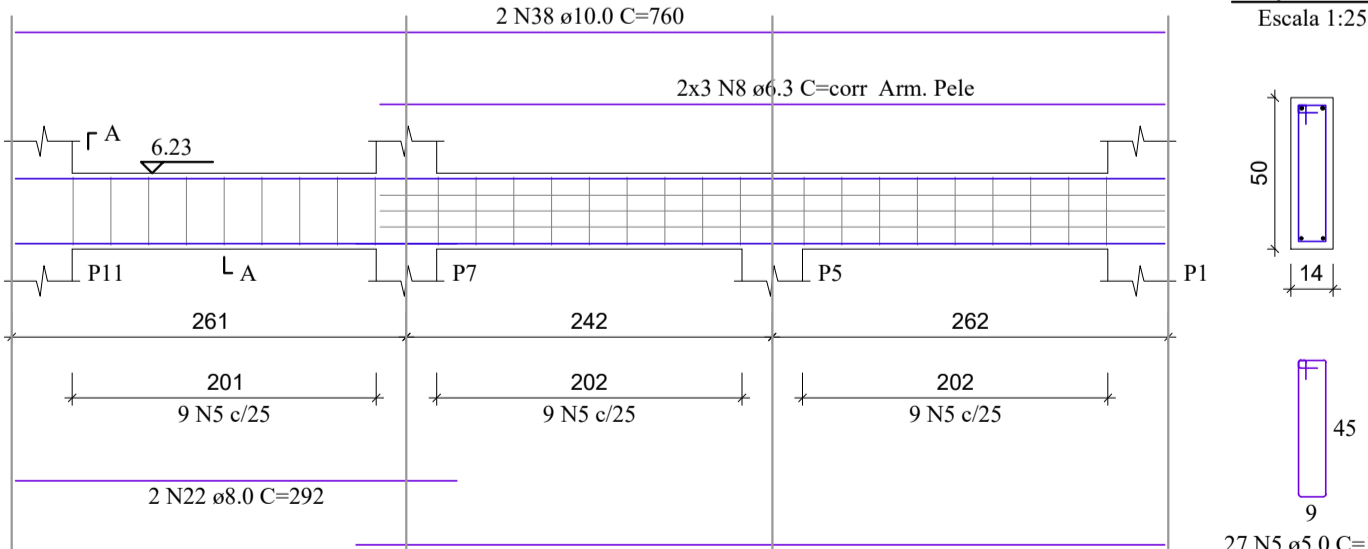
V225
Escala 1:50



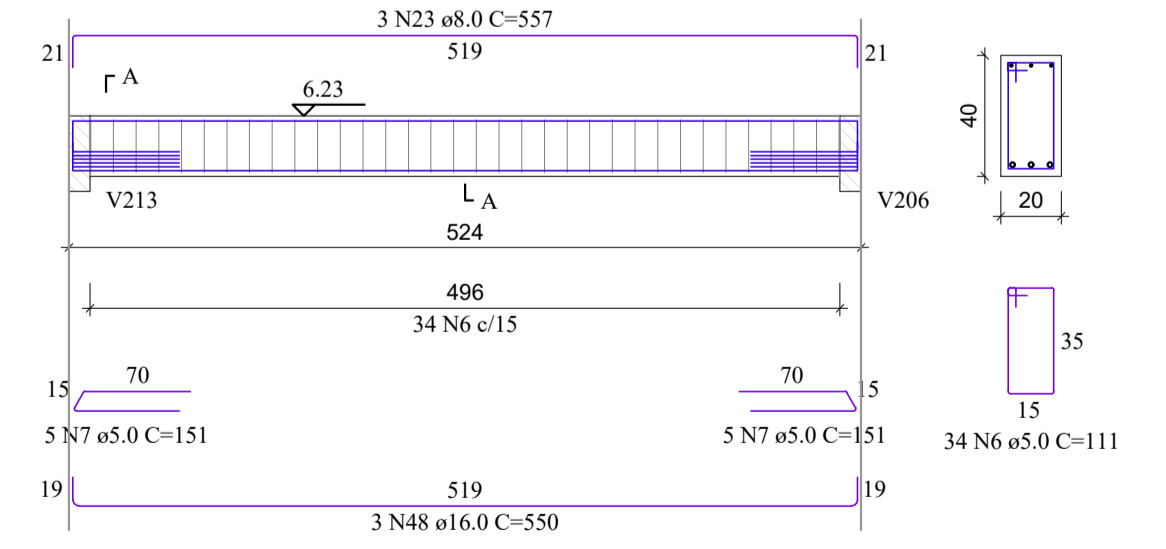
V226
Escala 1:50



V227
Escala 1:50



V228
Escala 1:50



RELAÇÃO DO AÇO

CAÇO	N	DIAM (mm)	QUANT	C.UNIT (cm)	C.TOTAL (cm)
CA60	1	5.0	142	121	17182
	2	5.0	14	79	1106
	3	5.0	241	99	23859
	4	5.0	2	143	286
	5	5.0	45	119	5355
	6	5.0	34	111	3774
	7	5.0	10	151	1510
	8	6.3	6	corr	3114
	9	8.0	3	858	2574
	10	8.0	4	117	468
	11	8.0	1	541	541
	12	8.0	3	850	2550
	13	8.0	3	152	456
	14	8.0	3	577	1731
	15	8.0	2	574	1148
	16	8.0	2	1124	2248
	17	8.0	2	317	634
	18	8.0	2	1098	2196
	19	8.0	1	594	594
	20	8.0	2	931	1862
	21	8.0	6	519	3114
	22	8.0	2	292	584
	23	8.0	3	557	1671
	24	10.0	3	614	1842
	25	10.0	1	151	151
	26	10.0	2	157	314
	27	10.0	2	1198	2396
	28	10.0	2	357	714
	29	10.0	2	208	416
	30	10.0	2	600	1200
	31	10.0	1	594	1188
	32	10.0	1	355	355
	33	10.0	1	794	794
	34	10.0	2	981	1962
	35	10.0	1	743	743
	36	10.0	2	1098	2196
	37	10.0	2	535	1070
	38	10.0	2	760	1520
	39	12.5	1	271	271
	40	12.5	2	1197	2394
	41	12.5	2	387	774
	42	12.5	2	593	1186
	43	12.5	2	629	1258
	44	12.5	2	619	1238
	45	12.5	1	790	790
	46	12.5	2	1164	2328
	47	12.5	2	931	1862
	48	16.0	3	550	1650

RESUMO DO AÇO

CAÇO	DIAM (mm)	C.TOTAL (m)	PESO = 10% (kg)
CA50	6.3	31.1	8.4
	8.0	223.7	97.1
	10.0	168.6	114.3
	12.5	121	128.2
	16.0	16.5	28.6
	5.0	530.7	90

PESO TOTAL (kg)	
CA50	376.7
CA60	90

Volume de concreto (C-30) = 6.55 m³
Área de forma = 104.55 m²

REV. 03	23/04/21	INSERÇÃO DE MICTÓRIOS	DAC
REV. 02	18/03/21	ALTERAÇÃO DO ACESSO DE SERVIÇO	DAC
REV. 01	16/12/20	ALTERAÇÃO DE LAYOUT	DAC
REV. 00	27/11/20	EMIÇÃO INICIAL	DAC
REVISÃO:	DATA :	DESCRIÇÃO:	RESP.:

CLIENTE



Prefeitura Municipal de Pouso Alegre

EMPREENHIMENTO

IMPLANTAÇÃO DA ESCOLA CIDADE JARDIM

GERÊNCIA DE PROJETOS
DENIS DE SOUZA SILVA CREA: MG-127.216/D

COORDENAÇÃO DE PROJETOS
ALDOISO CAETANO FERREIRA CREA: MG-97.132/D

RESPONSÁVEL TÉCNICO
ENGR. CIVIL FLÁVIA C. BARBOSA CREA: MG-187.842/D

PROJETO:
ENGR. SC. WILLIAM BARADEL LARI

DESENHO:
ENGR. SC. WILLIAM BARADEL LARI

ENDEREÇO
AVENIDA CAMILO DE BARROS LARAIA
POUSO ALEGRE - MINAS GERAIS

DISCIPLINA
ESTRUTURAL

FASE DO PROJETO
EXECUTIVO

ASSUNTO
PROJETO DE ESTRUTURA EM CONCRETO ARMADO - PRÉDIO B
DETALHAMENTO DAS ARMADURAS
VIGAS

FOLHA Nº.
40/49