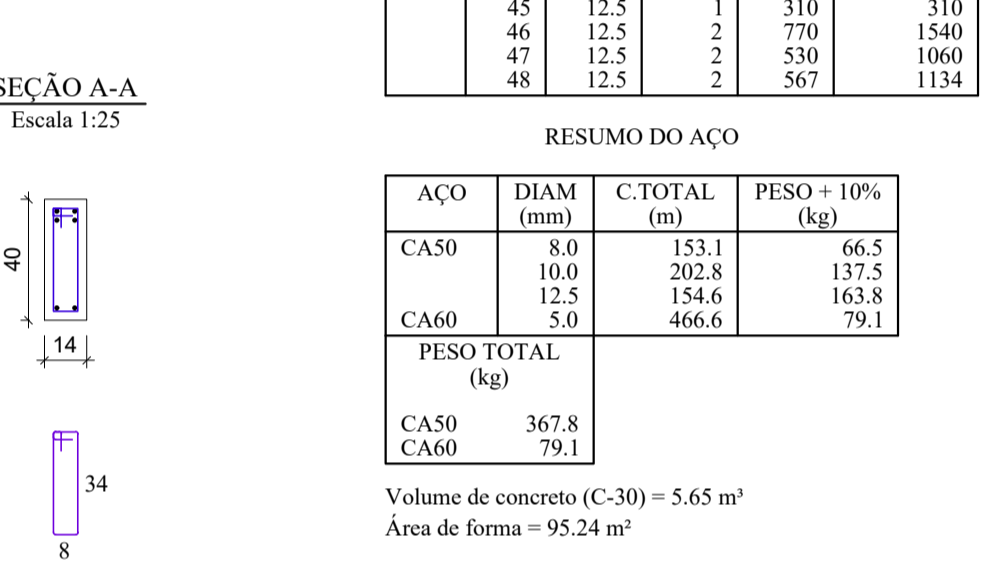
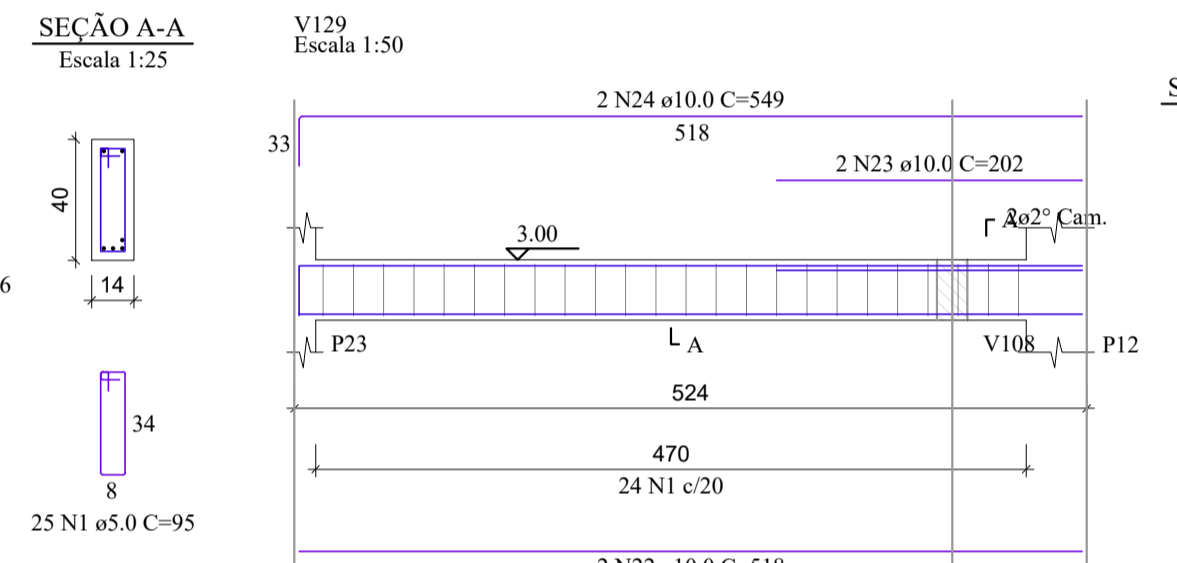
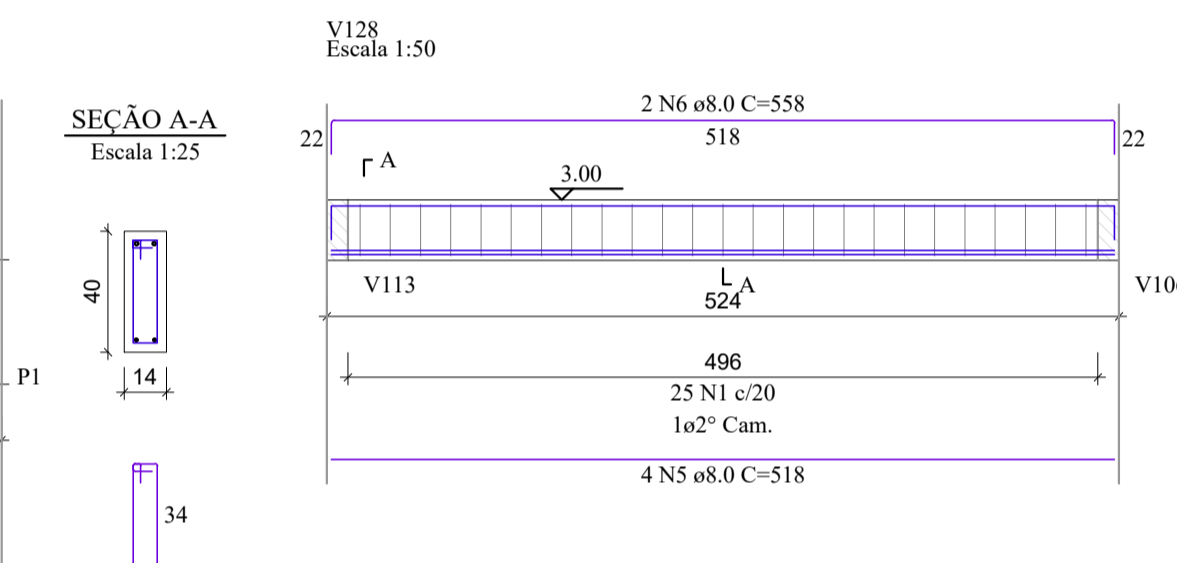
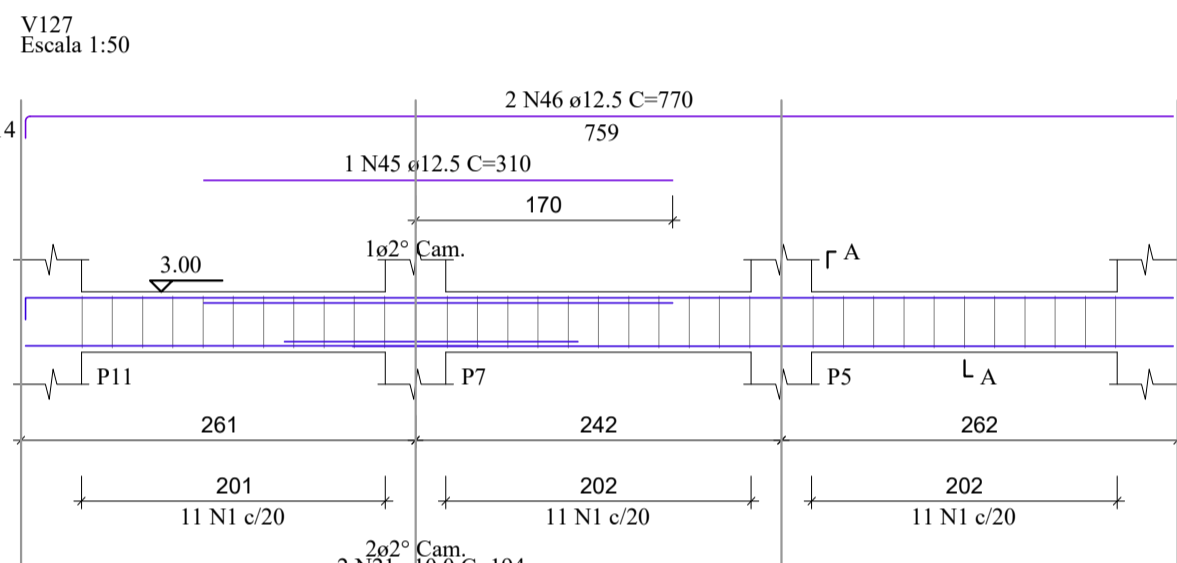
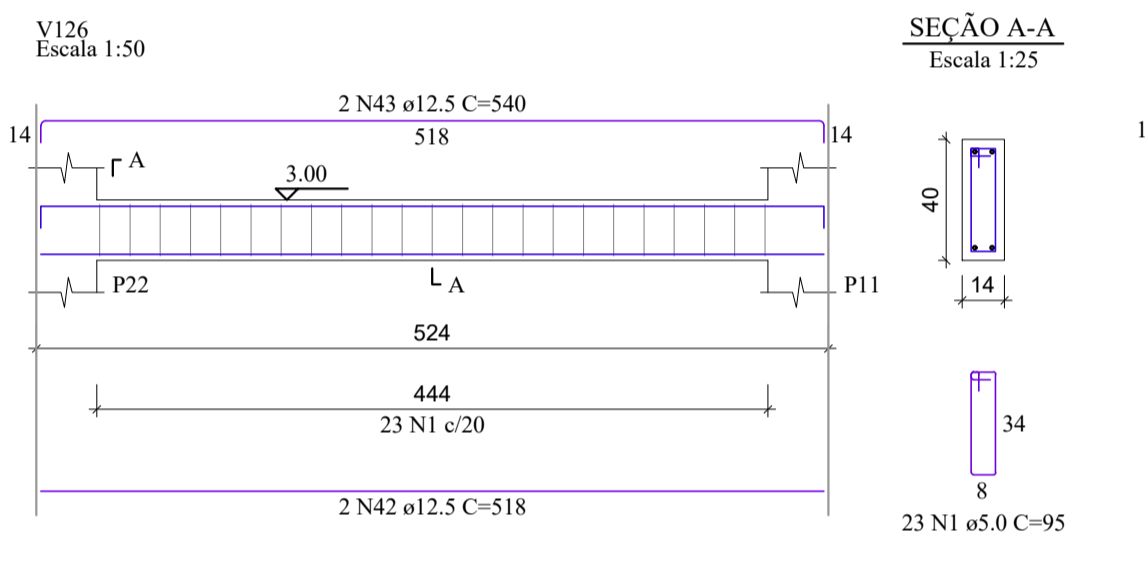
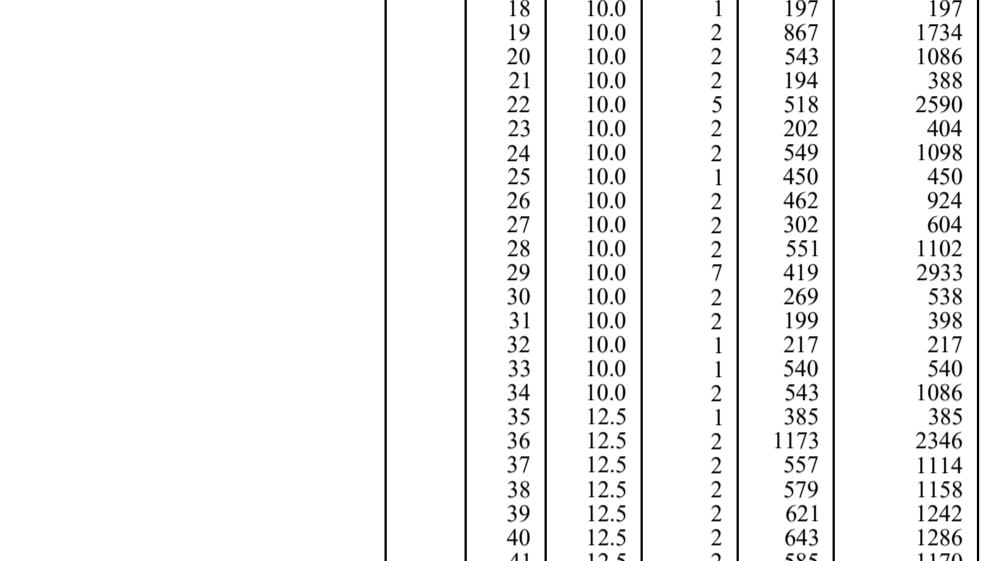
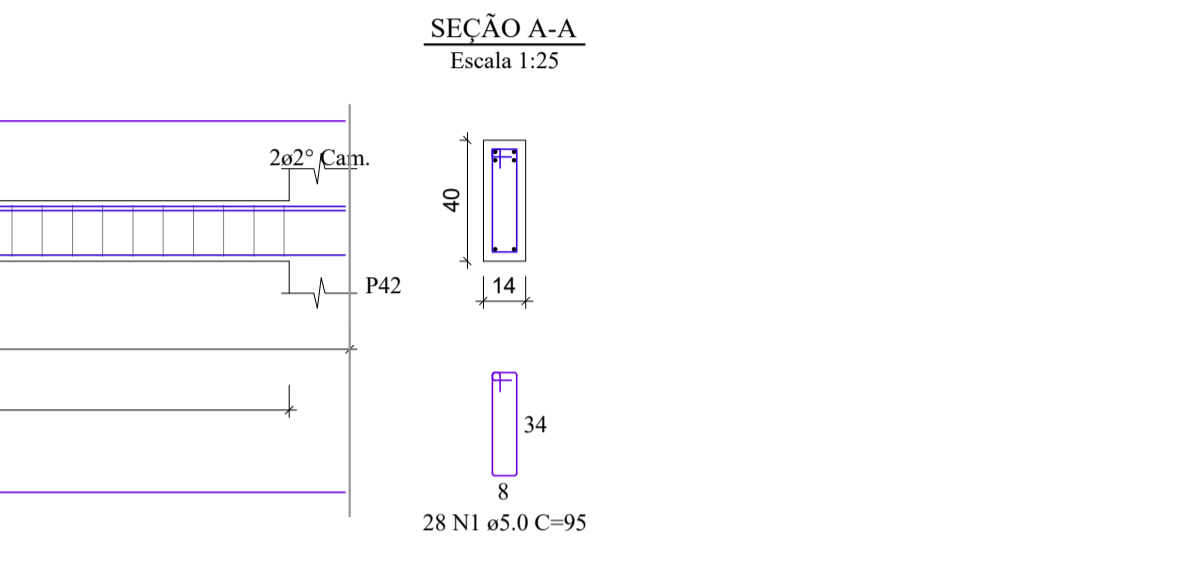
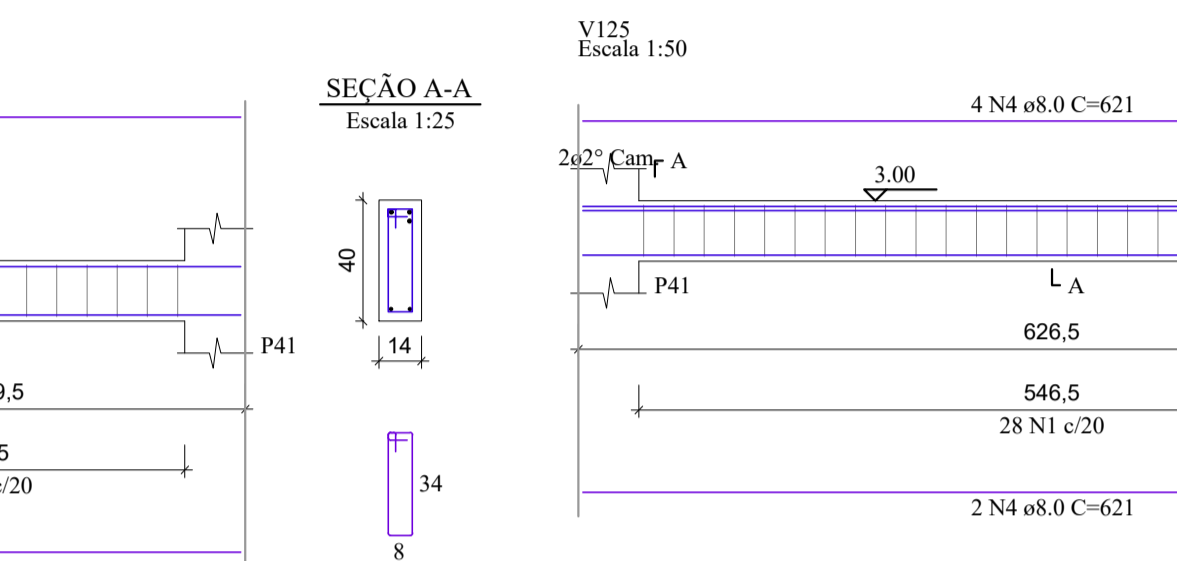
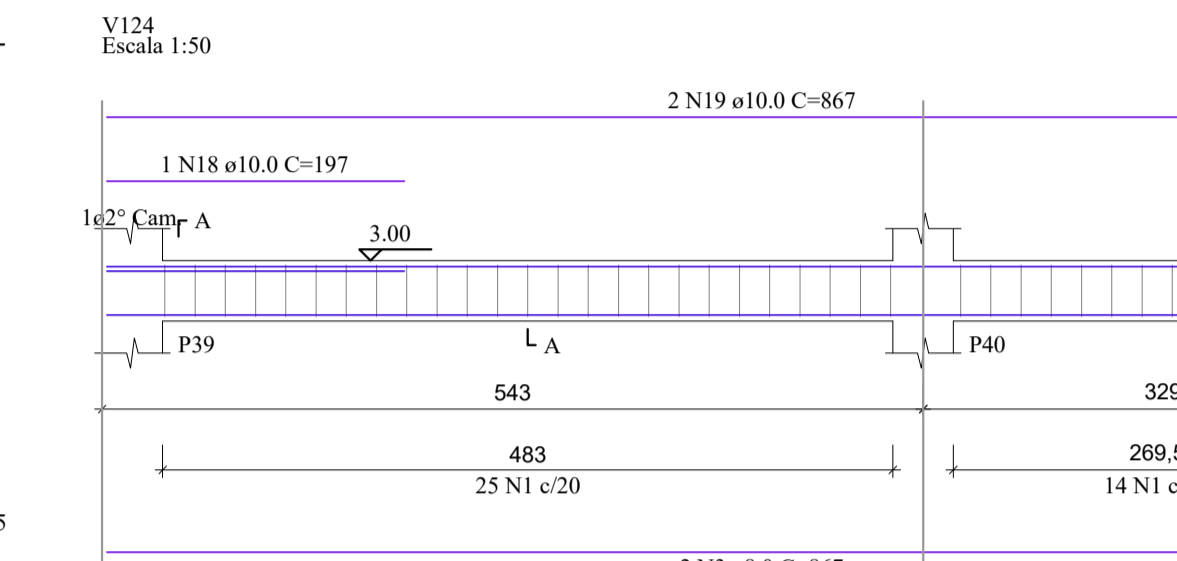
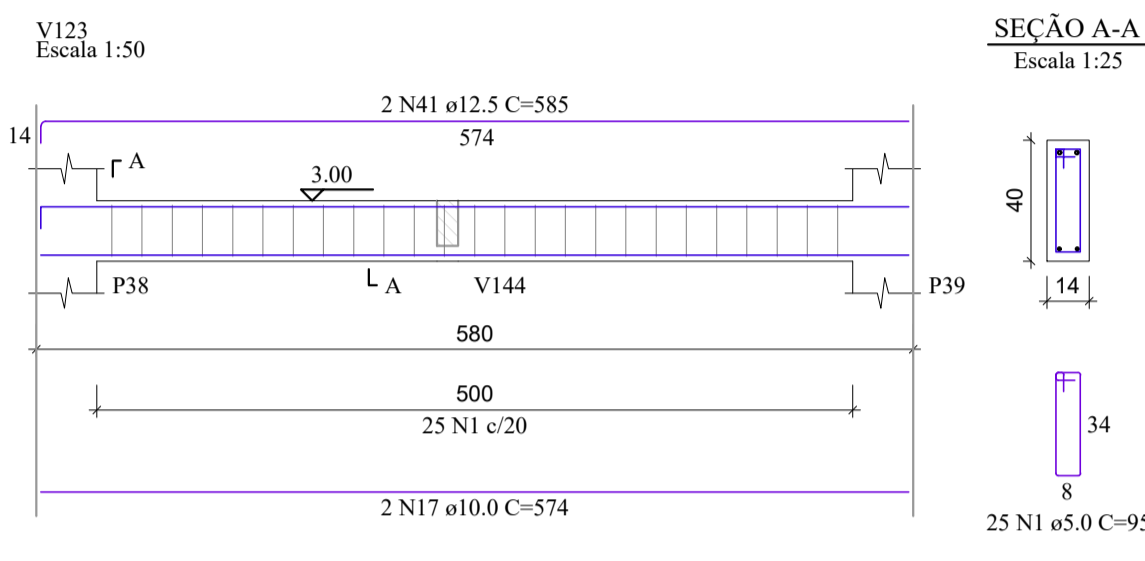


RELAÇÃO DO AÇO

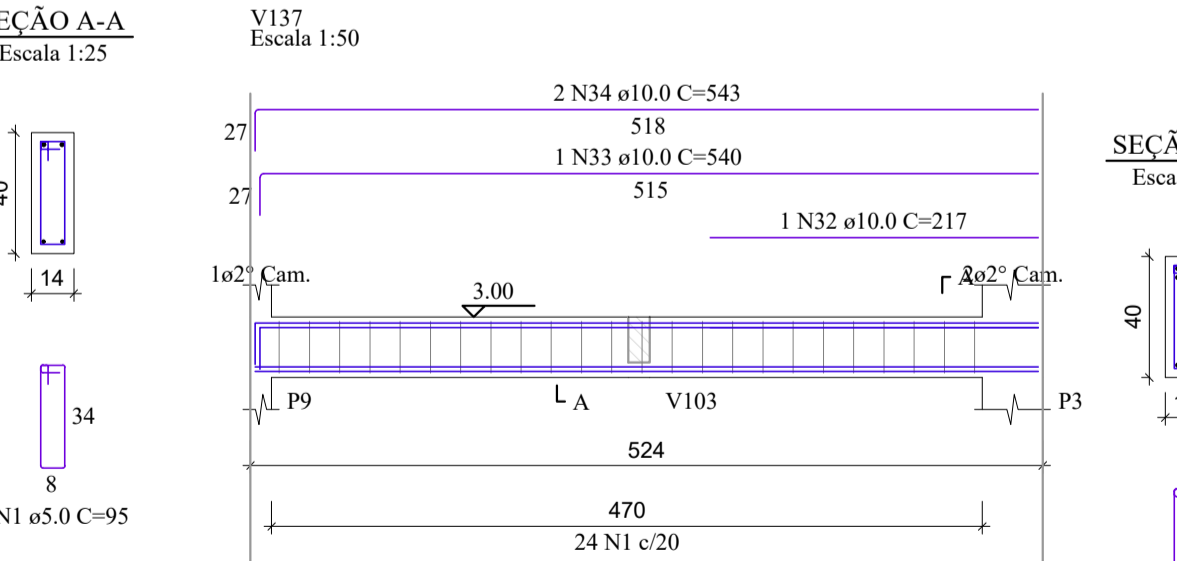
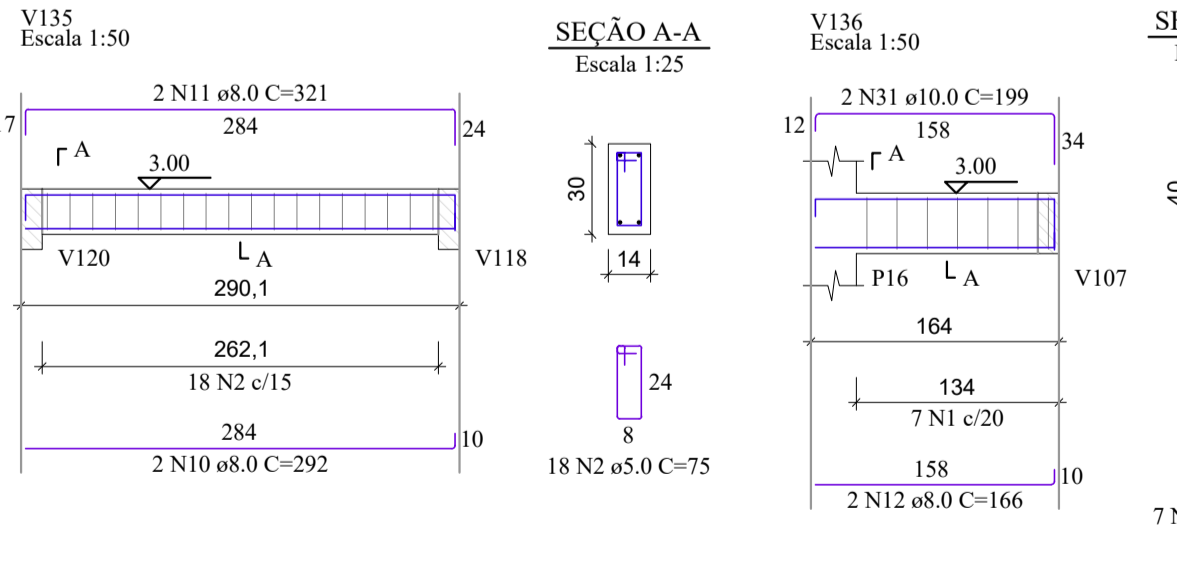
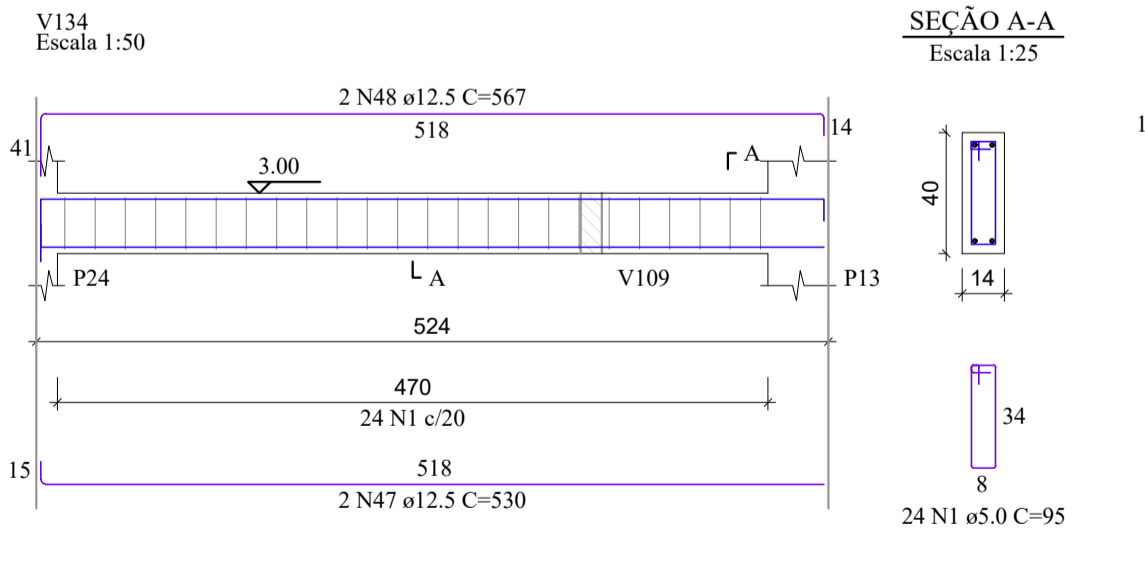
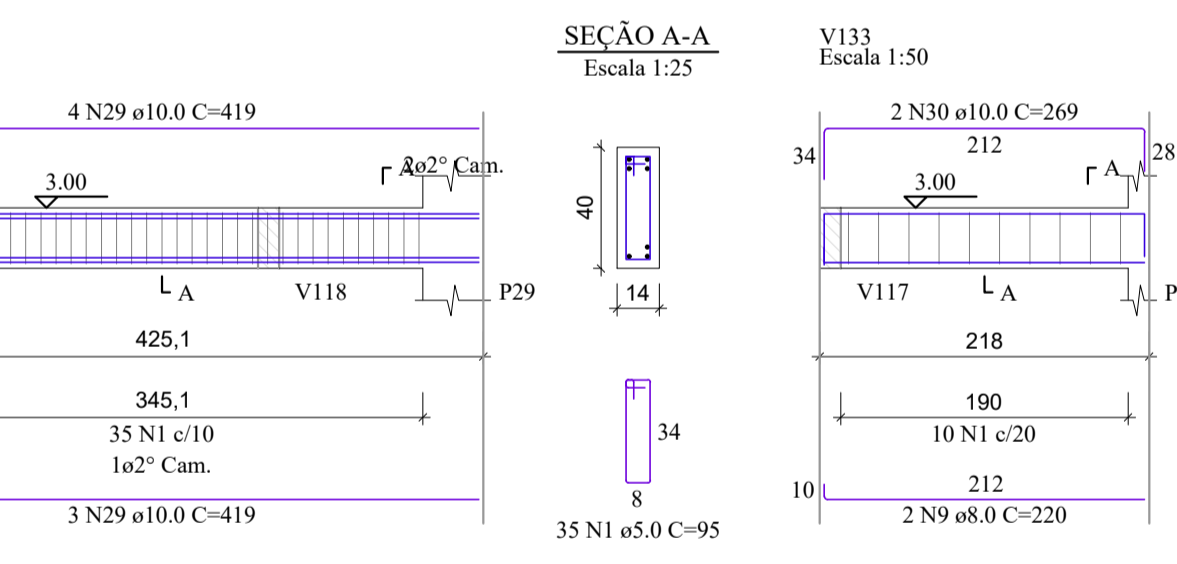
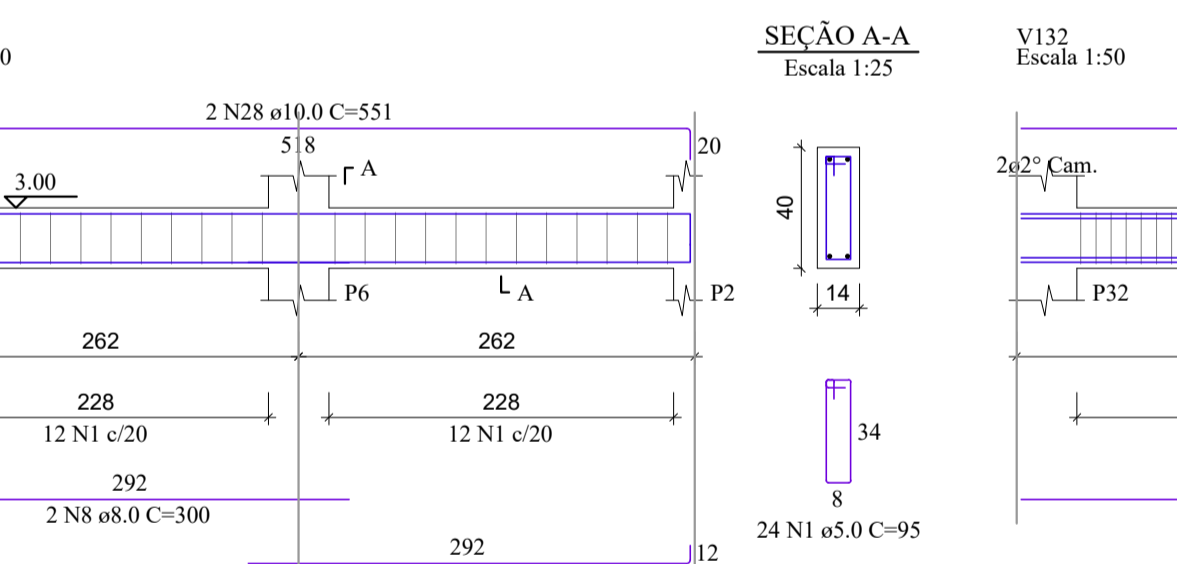
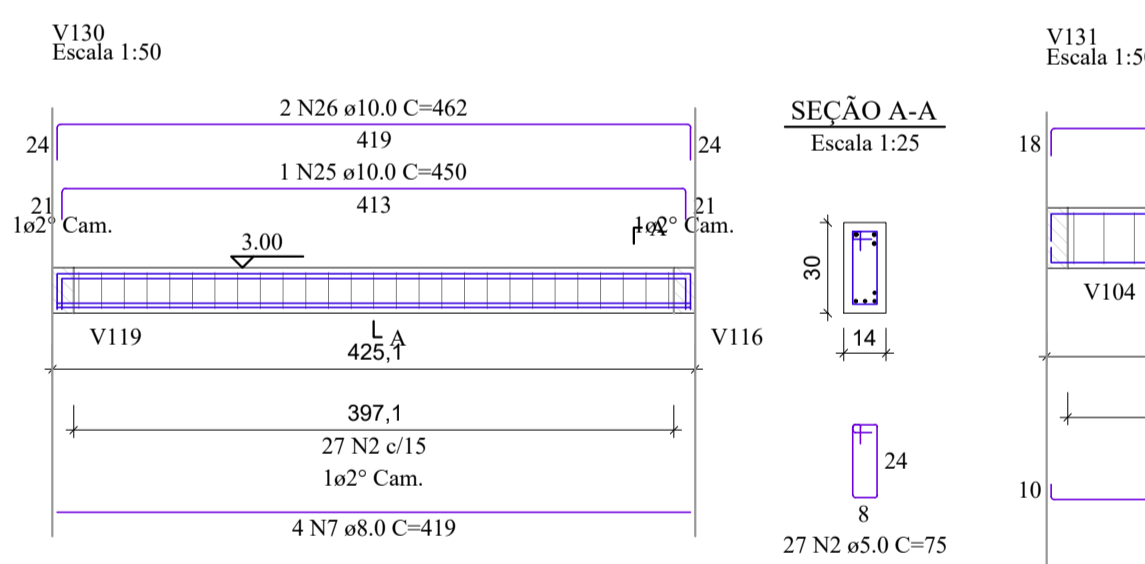
ACO	N	DIAM (mm)	QUANT	CUNIT (cm)	C.TOTAL (cm)
CA60	1	5.0	428	95	40660
CA50	2	5.0	80	75	6000
	3	8.0	2	867	1734
	4	8.0	6	621	3726
	5	8.0	4	518	2072
	6	8.0	2	558	1116
	7	8.0	4	419	1676
	8	8.0	2	300	600
	9	8.0	2	220	440
	10	8.0	4	292	1168
	11	8.0	4	321	1284
	12	8.0	2	166	332
	13	8.0	2	276	552
	14	8.0	2	305	610
	15	10.0	1	551	551
	16	10.0	2	1144	2288
	17	10.0	2	574	1148
	18	10.0	1	197	197
	19	10.0	2	867	1734
	20	10.0	2	543	1086
	21	10.0	2	194	388
	22	10.0	5	518	2590
	23	10.0	2	202	404
	24	10.0	2	549	1098
	25	10.0	1	450	450
	26	10.0	2	462	924
	27	10.0	2	302	604
	28	10.0	2	551	1102
	29	10.0	7	419	2933
	30	10.0	2	269	538
	31	10.0	2	199	398
	32	10.0	1	217	217
	33	10.0	1	540	540
	34	10.0	2	543	1086
	35	12.5	1	385	385
	36	12.5	2	1173	2346
	37	12.5	2	557	1114
	38	12.5	2	579	1158
	39	12.5	2	621	1242
	40	12.5	2	643	1286
	41	12.5	2	557	1114
	42	12.5	2	518	1036
	43	12.5	2	540	1080
	44	12.5	2	300	600
	45	12.5	1	310	310
	46	12.5	2	770	1540
	47	12.5	2	530	1060
	48	12.5	2	567	1134



RESUMO DO AÇO

ACO	DIAM (mm)	C.TOTAL (m)	PESO = 10% (kg)
CA50	8.0	153.1	66.5
	10.0	202.8	137.5
CA60	12.5	154.6	163.8
	5.0	466.6	79.1
PESO TOTAL (kg)			
CA50	367.8		
CA60	79.1		

Volume de concreto (C=30) = 5.65 m³  
Área de forma = 95.24 m²



REV. 03	23/04/21	INSERÇÃO DE MICTÓRIOS	DAC
REV. 02	18/03/21	ALTERAÇÃO DO ACESSO DE SERVIÇO	DAC
REV. 01	16/12/20	ALTERAÇÃO DE LAYOUT	DAC
REV. 00	27/11/20	EMIÇÃO INICIAL	DAC
REVISÃO:	DATA :	DESCRIÇÃO:	RESP.:



**DAC Engenharia**

Rua Miguel Vianna, nº 81, Sala 12  
Bairro Morro Chic  
CEP: 37500-080 - Itajubá / MG  
Tel: (35) 3623-5720  
www.dacengenharia.com.br

GERÊNCIA DE PROJETOS: DENIS DE SOUZA SILVA CREA: MG-127.216/D  
COORDENAÇÃO DE PROJETOS: ALOISIO CAETANO FERREIRA CREA: MG-97.132/D  
RESPONSÁVEL TÉCNICO: ENGR. CIVIL FLÁVIA C. BARBOSA CREA: MG-187.842/D  
PROJETO: ENGR. SC. WILLIAM BARADEL LARI  
DESENHO: ENGR. SC. WILLIAM BARADEL LARI

**IMPLANTAÇÃO DA ESCOLA CIDADE JARDIM**

ENDEREÇO: AVENIDA CAMILO DE BARROS LARIA, POUSO ALEGRE - MINAS GERAIS

ASSUNTO: PROJETO DE ESTRUTURA EM CONCRETO ARMADO - PRÉDIO B

DETALHAMENTO DAS ARMADURAS VIGAS

DISCIPLINA: ESTRUTURAL

FASE DO PROJETO: EXECUTIVO

FOLHA Nº: 37/49

DATA INICIAL: 27/11/2020 | ESCALA: INDICADA | REVISÃO: R02 | ARQUIVO: DAC-PMPA-JAR-PE-EST-R03.DWG