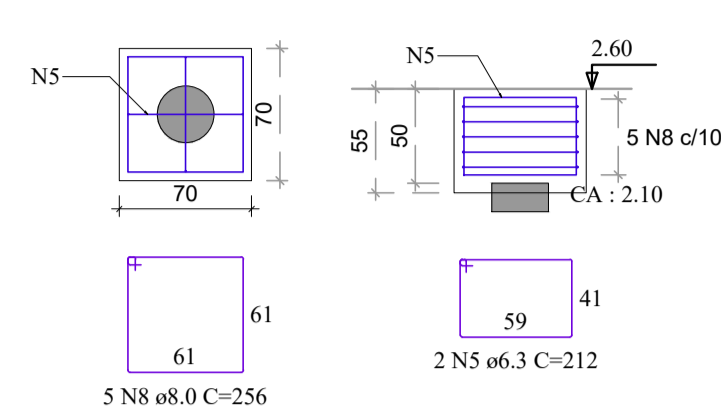
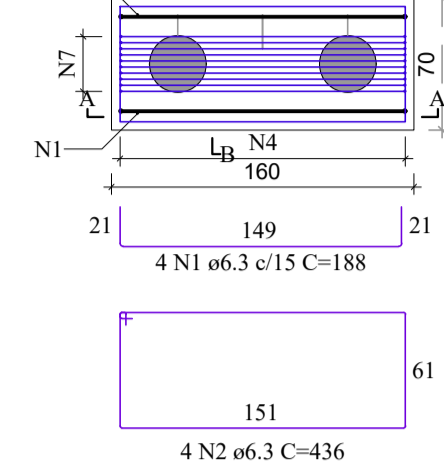


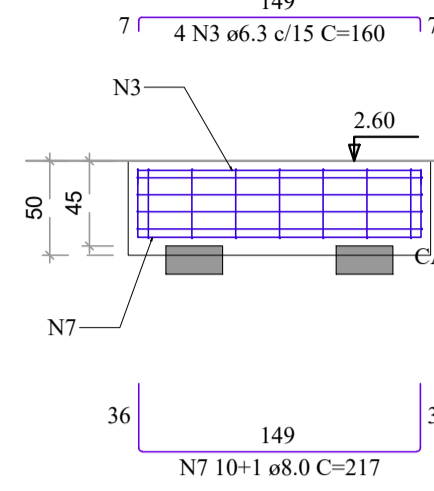
B1=B2=B3=B4=B5=B6=B7=B10=B11=B14-B16
 =B17=B18=B21=B22=B23=B25-B26-B27-B29
 =B30=B32=B33=B34=B37-B38-B39-B40-B41
 =B42
1xHE-30
 PLANTA
 Escala 1:40



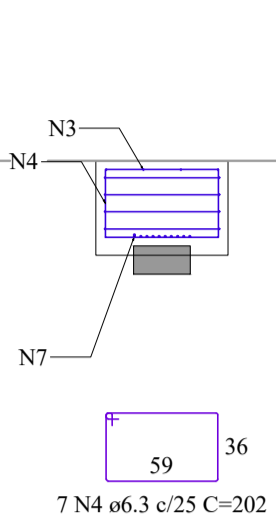
B8=B9=B12=B13=B19=B20-B24
2xHE-30
 PLANTA
 Escala 1:40



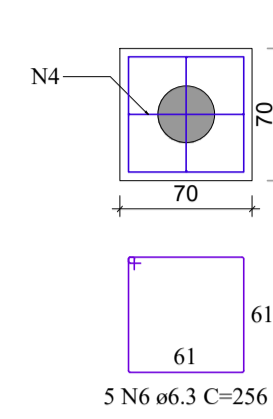
CORTE A-A
 Escala 1:40



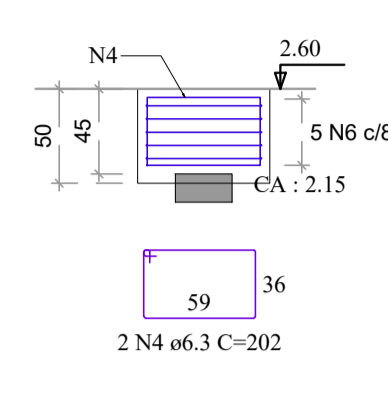
CORTE B-B
 Escala 1:40



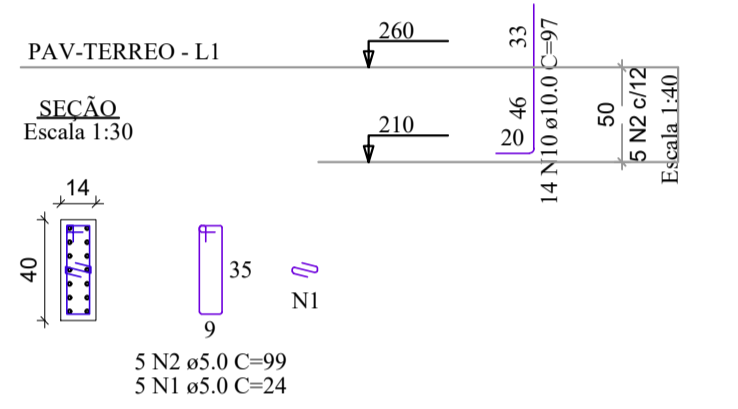
B15=B15-B36
1xHE-30
 PLANTA
 Escala 1:40



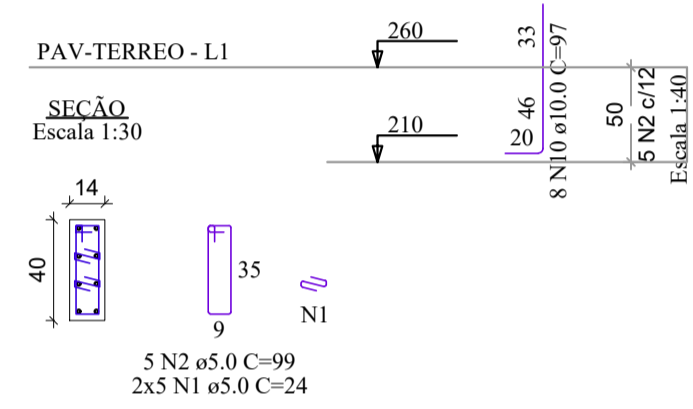
CORTE
 Escala 1:40



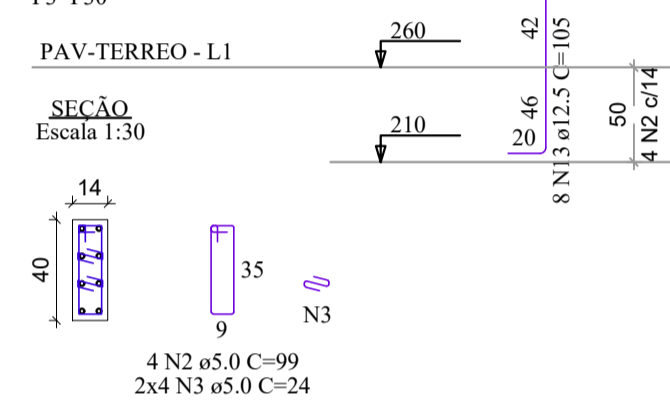
P1=P22=P26



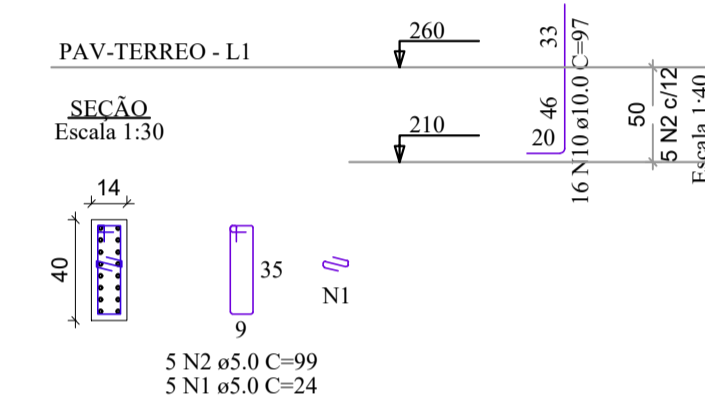
P2=P4=P14=P33=P37



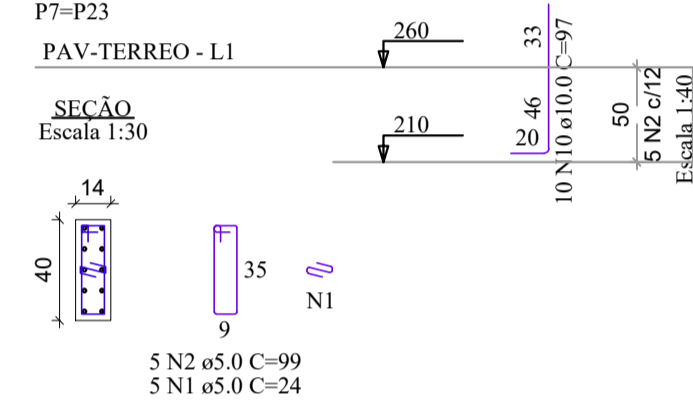
P3=P30



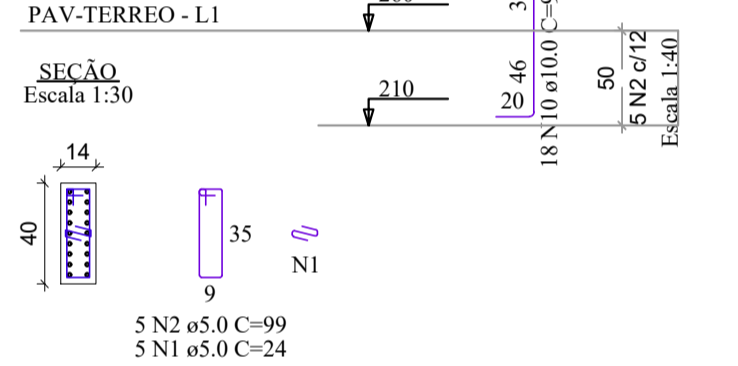
P5=P6=P29=P32=P41



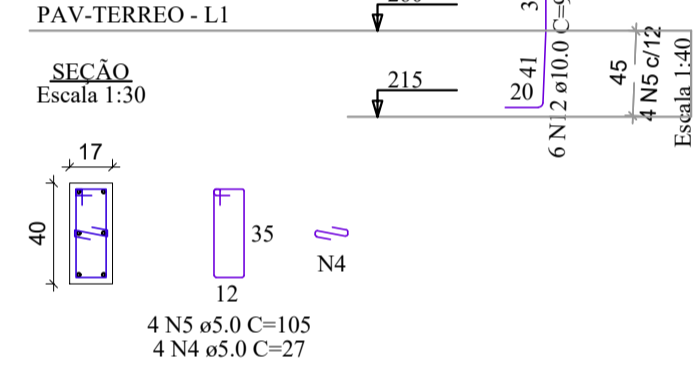
P7=P23



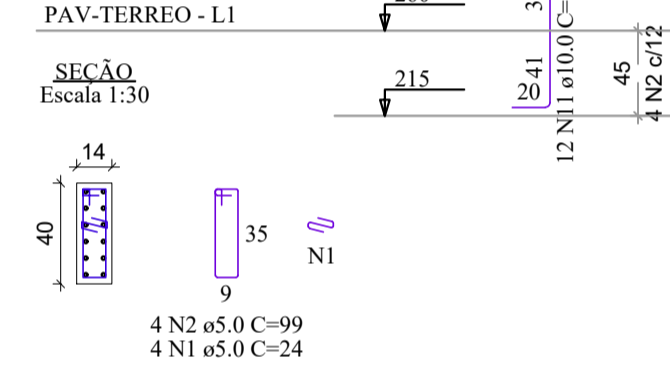
P11



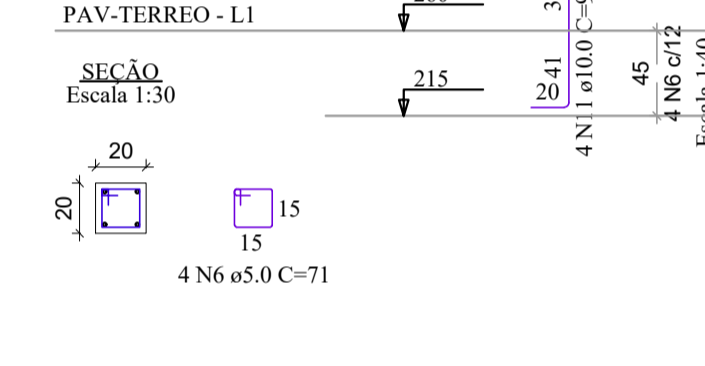
P12



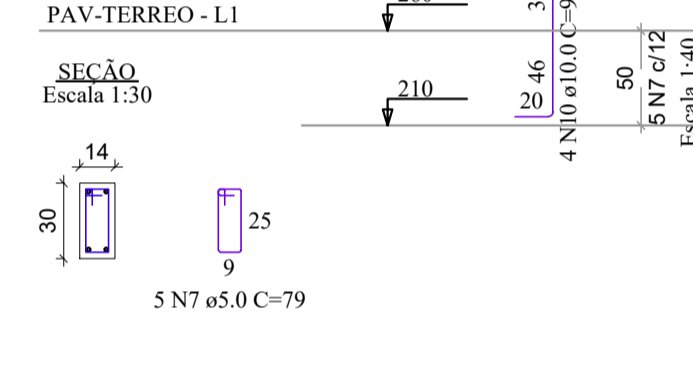
P13



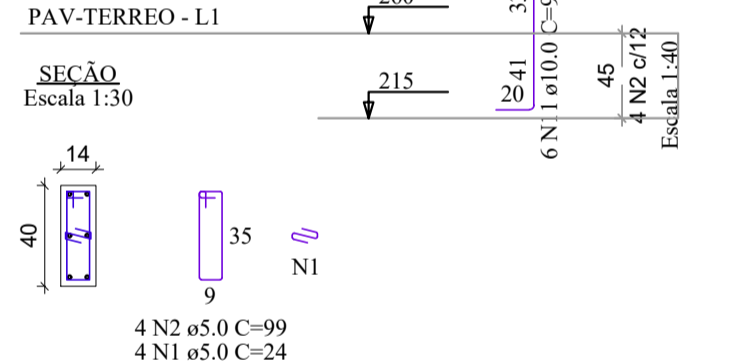
P15



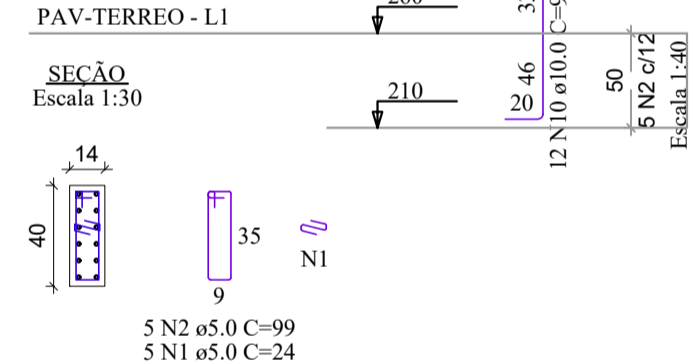
P16=P25



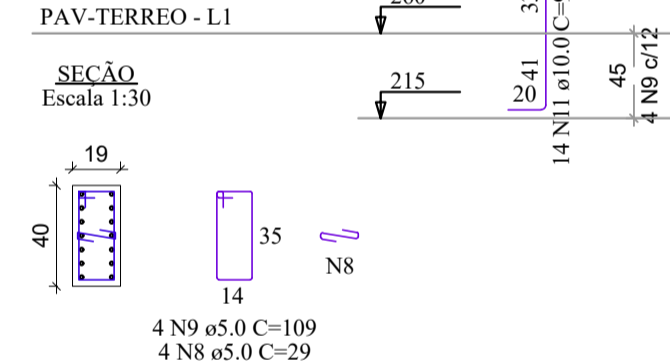
P24



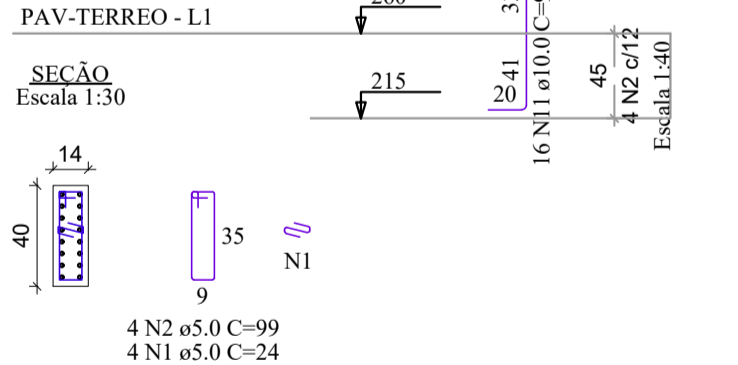
P27=P40



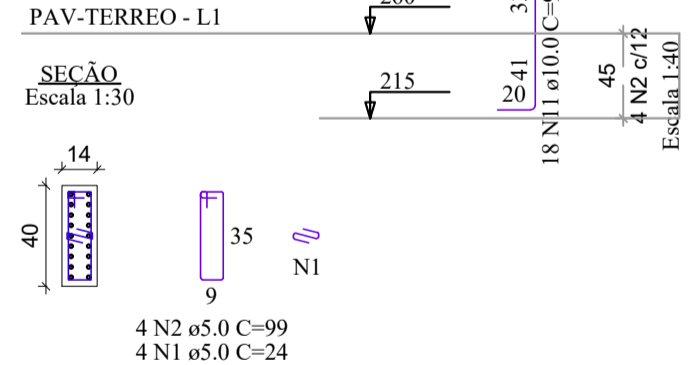
P36



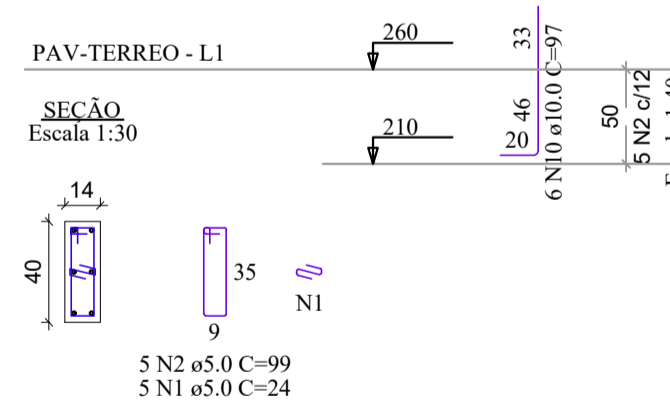
P8



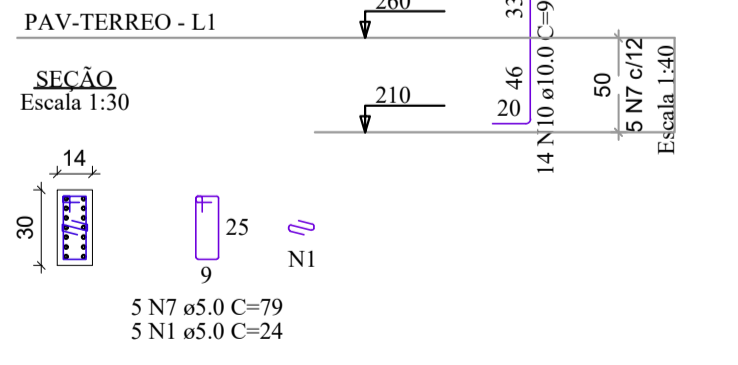
P9



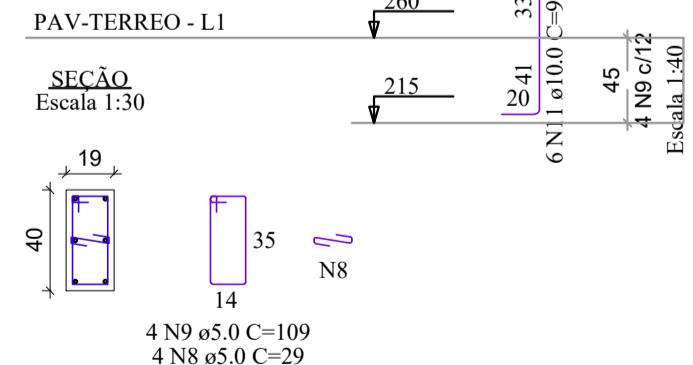
P10=P18=P21=P34=P38=P39=P42



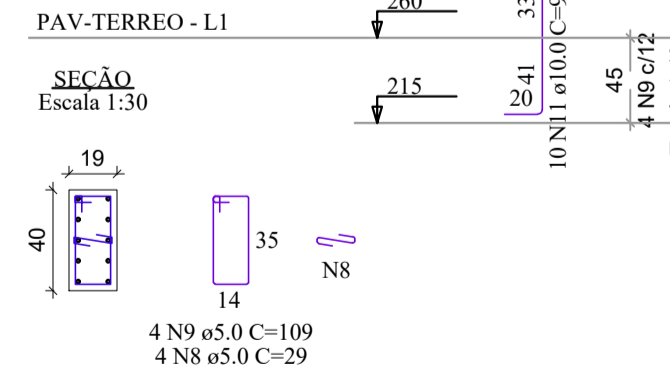
P17



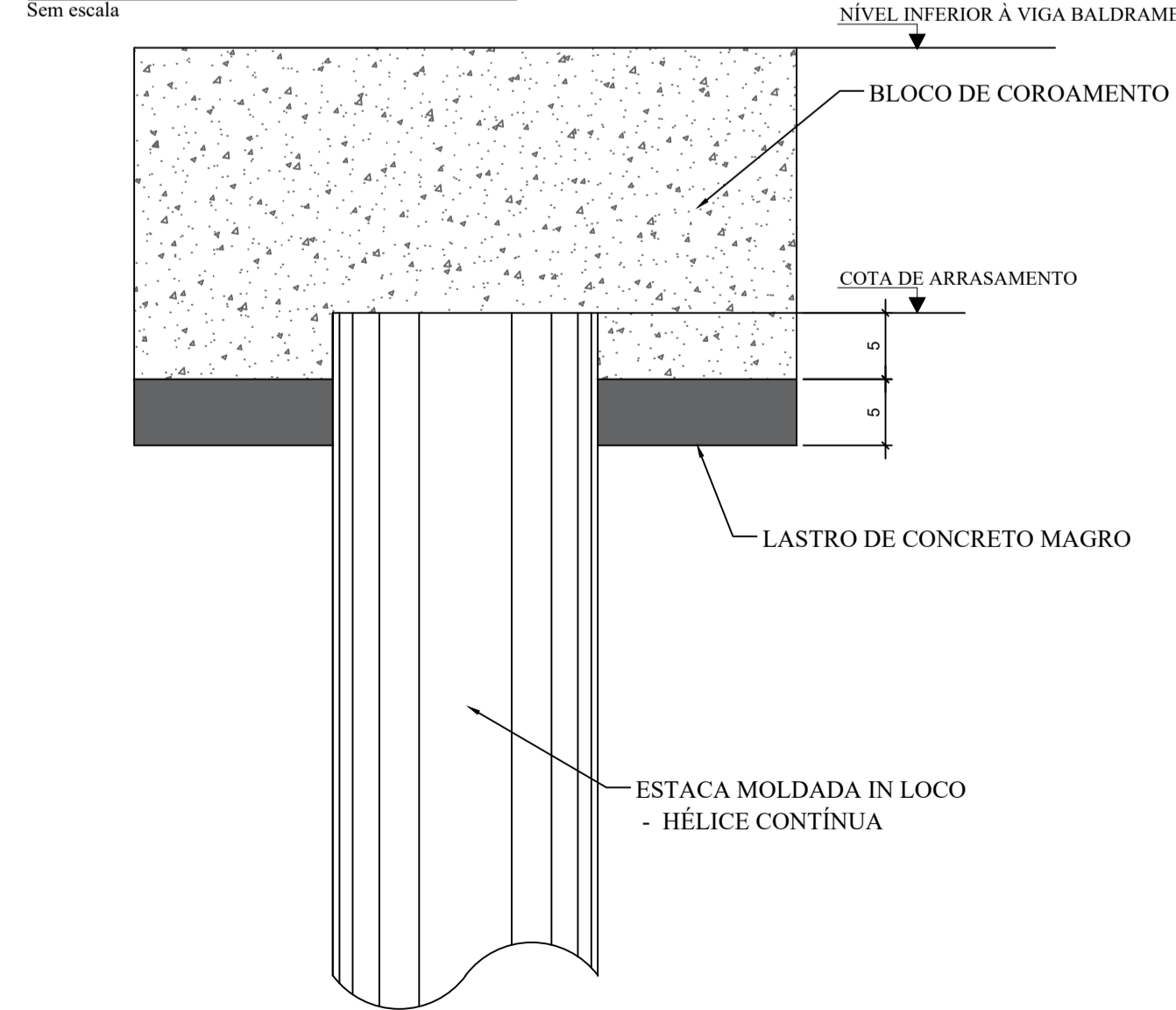
P19



P20=P35

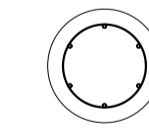


DETALHAMENTO TÍPICO DAS ESTACAS



DETALHE DA ESTACA HE 30

Escala 1:20



ARMADURA PRINCIPAL = 6 N2 Ø10,00 mm C=440
 ESTRIBOS = 25 N1 Ø6,30 mm c/ 15 c C = 75
 Estaca do tipo hélice contínua com profundidade total de 12 metros. A armadura deve ser realizada até a profundidade de 4,00 metros da cota de arrasamento.
 O cobrimento das estacas é de 4,00 cm.
 Concreto com fck >= 20 MPa do tipo usinado.

RELAÇÃO DO AÇO

7xB12	30xB33	3xB36			
AÇO	N	DIAM (mm)	QUANT	C.UNIT (cm)	C.TOTAL (cm)
CA50	1	6.3	28	188	5264
	2	6.3	28	436	12208
	3	6.3	28	160	4480
	4	6.3	55	202	11110
	5	6.3	60	212	12720
	6	6.3	15	256	3840
	7	8.0	77	217	16709
	8	8.0	150	256	38400

RESUMO DO AÇO

AÇO	DIAM (mm)	C.TOTAL (m)	PESO + 10% (kg)
CA50	6.3	496.2	133.6
PESO TOTAL (kg)			239.2
CA50	372.8		

Volume de concreto (C-30) = 12.57 m³
 Área de forma = 66.50 m²

RELAÇÃO DO AÇO

3xP1	5xP2	2xP3
5xP5	2xP7	P8
P9	7xP10	P11
P12	P13	P15
2xP16	P17	P19
2xP20	P24	2xP27
P26		

AÇO	N	DIAM (mm)	QUANT	C.UNIT (cm)	C.TOTAL (cm)
CA60	1	5.0	171	24	4104
	2	5.0	149	99	14751
	3	5.0	16	24	384
	4	5.0	4	27	108
	5	5.0	4	105	420
	6	5.0	4	71	284
	7	5.0	15	79	1185
	8	5.0	16	29	464
	9	5.0	16	109	1744
CA50	10	10.0	288	97	27936
	11	10.0	96	92	8832
	12	10.0	6	92	552
	13	12.5	16	105	1680

RESUMO DO AÇO

AÇO	DIAM (mm)	C.TOTAL (m)	PESO + 10% (kg)
CA50	10.0	373.2	253.1
CA60	12.5	16.8	17.8
	5.0	234.4	39.7
PESO TOTAL (kg)			
CA50	270.9		
CA60	39.7		

Volume de concreto (C-30) = 1.11 m³
 Área de forma = 20.84 m²

REV. 03	23/04/21	INSERÇÃO DE MICTÓRIOS	DAC
REV. 02	18/03/21	ALTERAÇÃO DO ACESSO DE SERVIÇO	DAC
REV. 01	16/12/20	ALTERAÇÃO DE LAYOUT	DAC
REV. 00	27/11/20	EMIÇÃO INICIAL	DAC
REVISÃO: DATA :		DESCRIÇÃO:	RESP.:

CLIENTE

Prefeitura Municipal de Pouso Alegre

PROJETO

DAC Engenharia

Rua Miguel Vianna, nº 81, Sala 12
 Bairro Marro Chic
 CEP: 37500-080 - Itajubá / MG
 Tel: (35) 3623-5720
 www.dacengenharia.com.br

GERÊNCIA DE PROJETOS
 DENIS DE SOUZA SILVA CREA: MG-127.216/D

COORDENAÇÃO DE PROJETOS
 ALOISIO CAETANO FERREIRA CREA: MG-97.132/D

RESPONSÁVEL TÉCNICO
 ENG. CIVIL FLÁVIA C. BARBOSA CREA: MG-187.842/D

PROJETO
 ENG. SC. WILLIAM BARADEL LARI

DESENHO
 ENG. SC. WILLIAM BARADEL LARI

EMPREENDIMENTO		IMPLANTAÇÃO DA ESCOLA CIDADE JARDIM	
ENDEREÇO	AVENIDA CAMILO DE BARROS LARAIA POUSO ALEGRE - MINAS GERAIS	DISCIPLINA	ESTRUTURAL
ASSUNTO	PROJETO DE ESTRUTURA EM CONCRETO ARMADO - PRÉDIO B DETALHAMENTO DAS ARMADURAS BLOCOS DE COROAMENTO, ESTACAS E ARRANQUES	FASE DO PROJETO	EXECUTIVO
DATA INICIAL	27/11/2020	FOLHA Nº.	33/49
ESCALA	INDICADA	REVISOÃO	RO2
ARQUIVO	DAC-PMPA-JAR-PE-EST-R03.DWG		