

PLANTA DE VIGOTAS PRÉ-MOLDADAS

Escala 1:75

RELAÇÃO DO AÇO

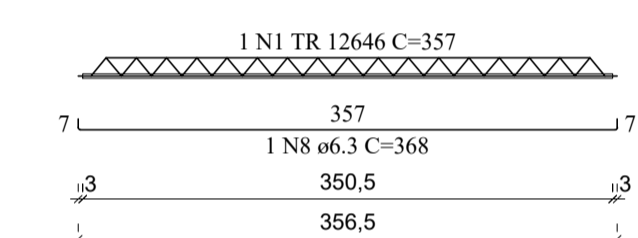
| AÇO | N | DIAM (mm) | QUANT | C.UNIT (cm) | C.TOTAL (cm) |
|------|---|-----------|-------|-------------|--------------|
| CA60 | 1 | TR 12646 | 168 | 357 | 59976 |
| | 2 | TR 12646 | 15 | 316 | 4740 |
| | 3 | TR 12646 | 1 | 311 | 311 |
| | 4 | TR 12646 | 15 | 318 | 4770 |
| | 5 | TR 12646 | 1 | 313 | 313 |
| | 6 | TR 12646 | 14 | 195 | 2730 |
| | 7 | TR 12646 | 84 | 145 | 12180 |
| | 8 | TR 12646 | 84 | 368 | 30912 |

RESUMO DO AÇO

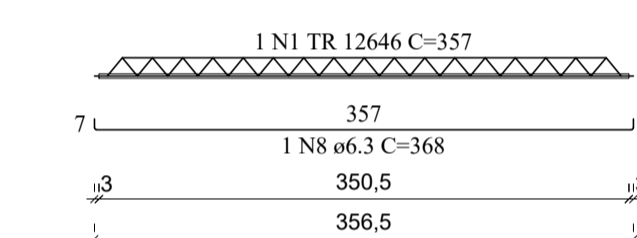
| AÇO | DIAM (mm) | C.TOTAL (m) | PESO + 10% (kg) |
|------------------------|-----------|-------------|-----------------|
| CA50 | 6,3 | 309,1 | 83,2 |
| CA60 | TR 12646 | 850,1 | 951 |
| PESO TOTAL (kg) | | | |
| CA50 | | 83,2 | |
| CA60 | | 951 | |

Volume de concreto (C-30) = 0,00 m³
Área de forma = 0,00 m²

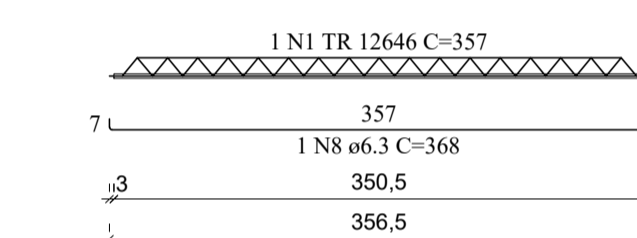
VT201a (7 unidades)
(L201)
ESC 1:50



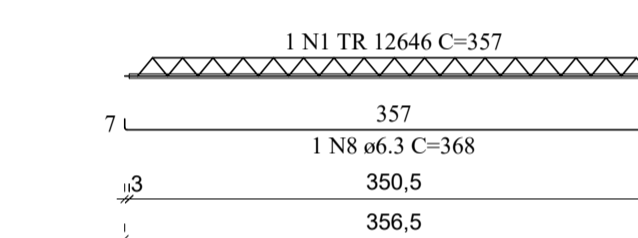
VT202a (7 unidades)
(L202)
ESC 1:50



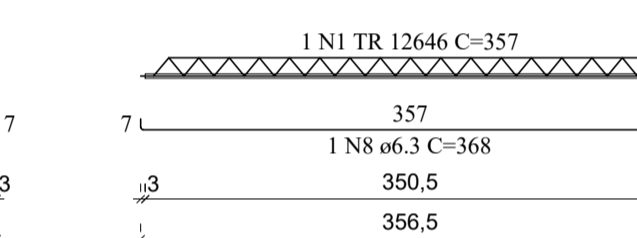
VT203a (7 unidades)
(L203)
ESC 1:50



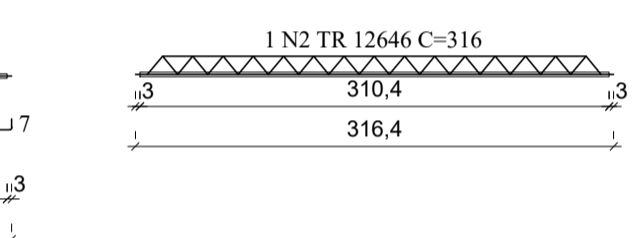
VT204a (7 unidades)
(L204)
ESC 1:50



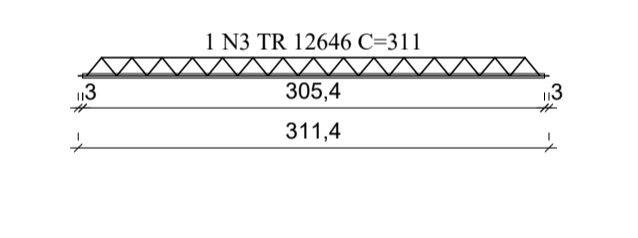
VT205a (7 unidades)
(L205)
ESC 1:50



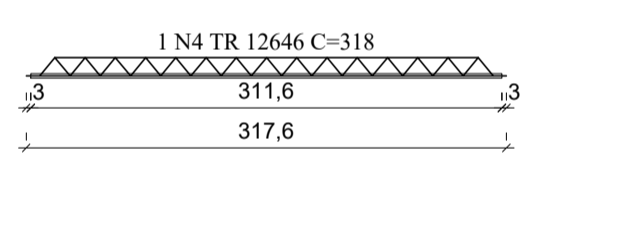
VT207a (15 unidades)
(L207)
ESC 1:50



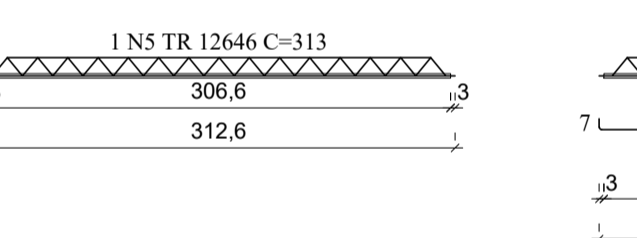
VT207b (1 unidades)
(L207)
ESC 1:50



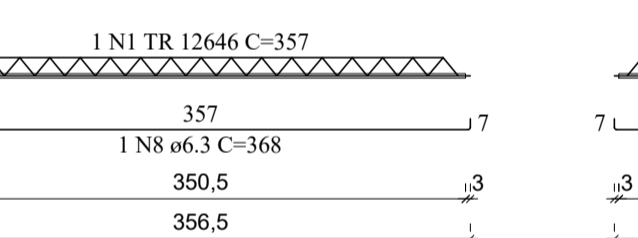
VT208a (15 unidades)
(L208)
ESC 1:50



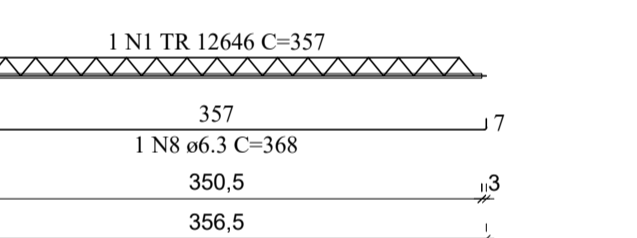
VT208b (1 unidades)
(L208)
ESC 1:50



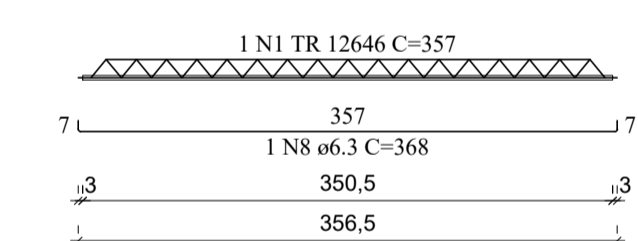
VT209a (7 unidades)
(L209)
ESC 1:50



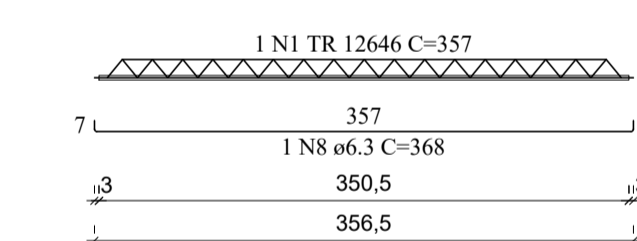
VT210a (7 unidades)
(L210)
ESC 1:50



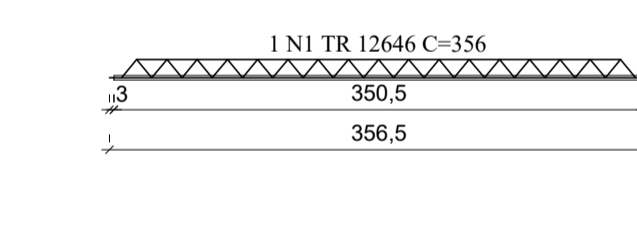
VT213a (7 unidades)
(L213)
ESC 1:50



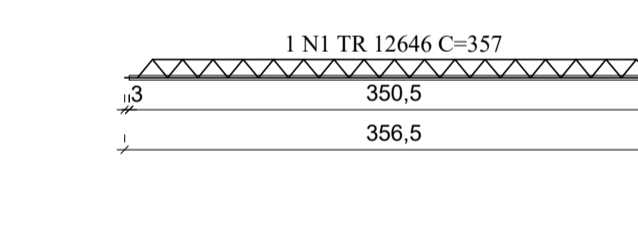
VT214a (7 unidades)
(L214)
ESC 1:50



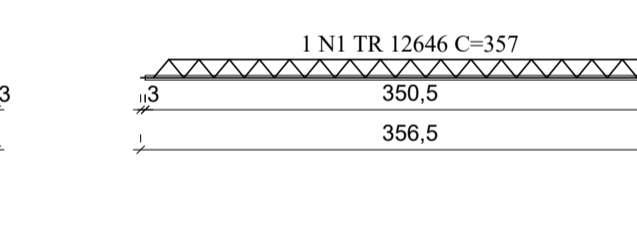
VT215a (7 unidades)
(L215)
ESC 1:50



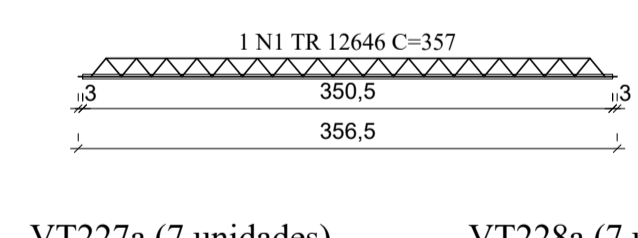
VT216a (7 unidades)
(L216)
ESC 1:50



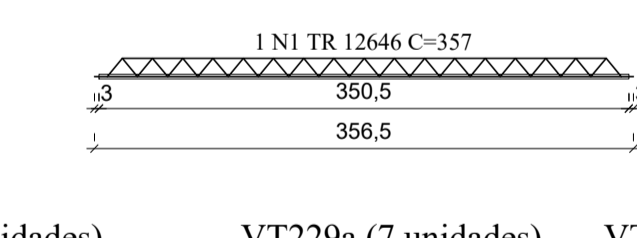
VT217a (7 unidades)
(L217)
ESC 1:50



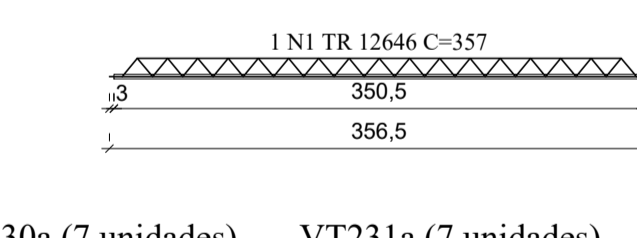
VT220a (7 unidades)
(L220)
ESC 1:50



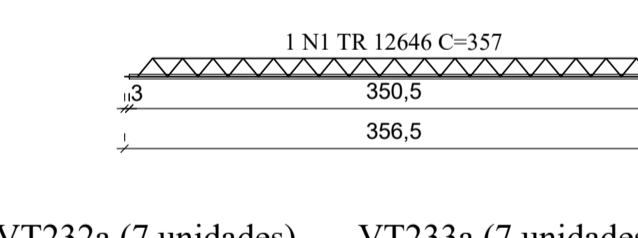
VT221a (7 unidades)
(L221)
ESC 1:50



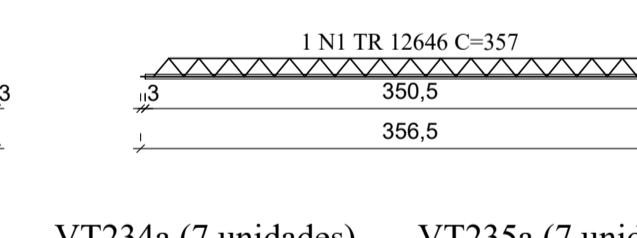
VT222a (7 unidades)
(L222)
ESC 1:50



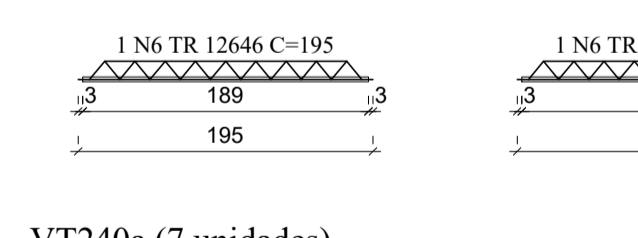
VT223a (7 unidades)
(L223)
ESC 1:50



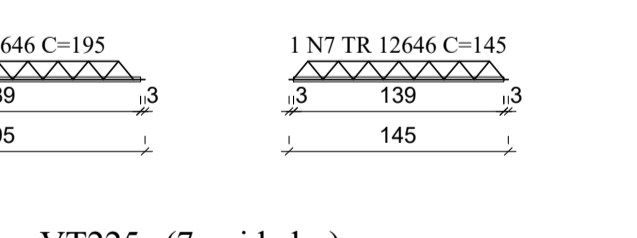
VT224a (7 unidades)
(L224)
ESC 1:50



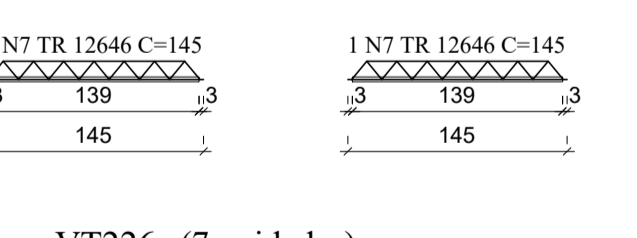
VT227a (7 unidades)
(L227)
ESC 1:50



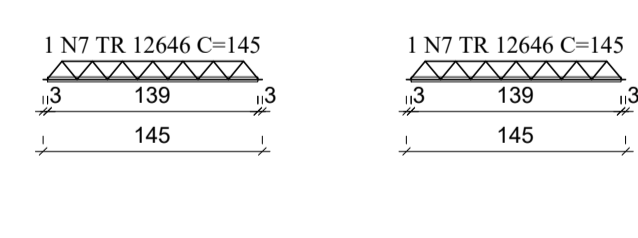
VT228a (7 unidades)
(L228)
ESC 1:50



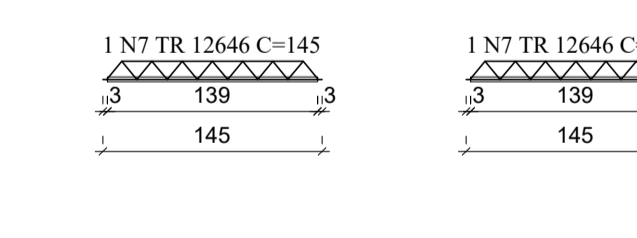
VT229a (7 unidades)
(L229)
ESC 1:50



VT230a (7 unidades)
(L230)
ESC 1:50



VT231a (7 unidades)
(L231)
ESC 1:50



VT232a (7 unidades)
(L232)
ESC 1:50



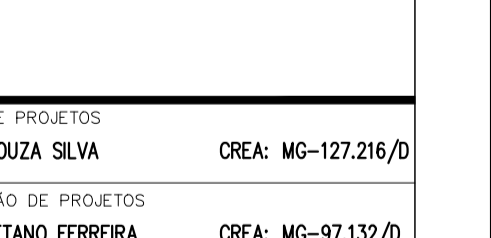
VT233a (7 unidades)
(L233)
ESC 1:50



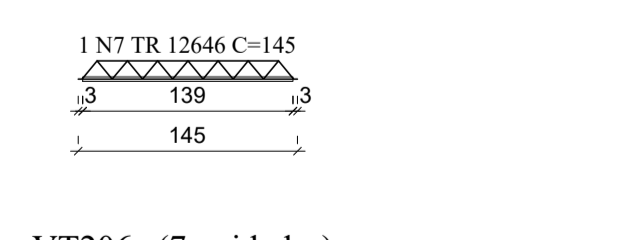
VT234a (7 unidades)
(L234)
ESC 1:50



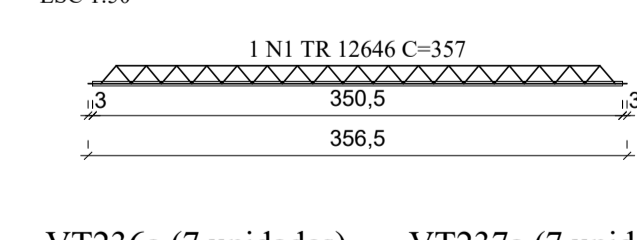
VT235a (7 unidades)
(L235)
ESC 1:50



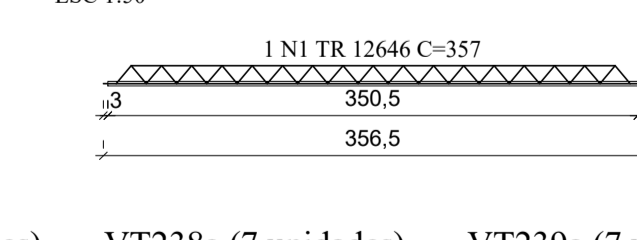
VT240a (7 unidades)
(L240)
ESC 1:50



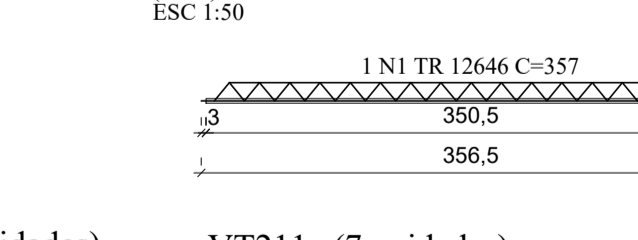
VT225a (7 unidades)
(L225)
ESC 1:50



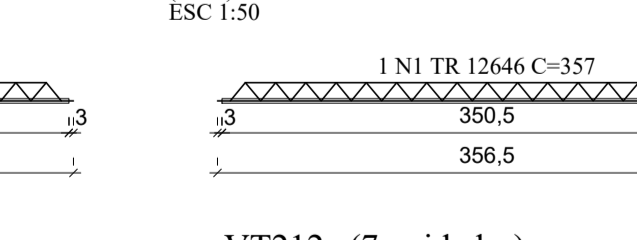
VT226a (7 unidades)
(L226)
ESC 1:50



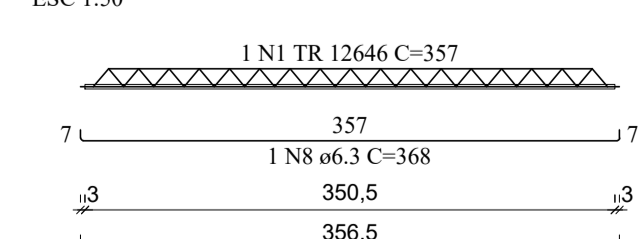
VT218a (7 unidades)
(L218)
ESC 1:50



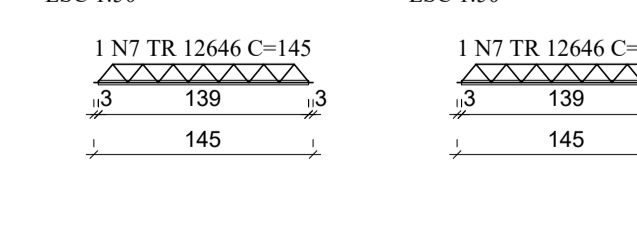
VT219a (7 unidades)
(L219)
ESC 1:50



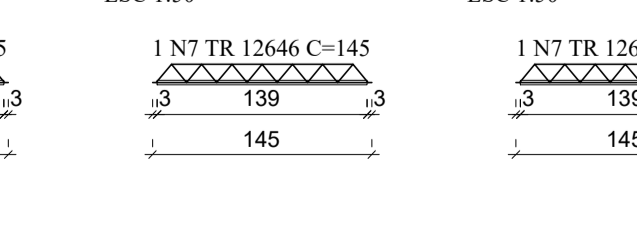
VT206a (7 unidades)
(L206)
ESC 1:50



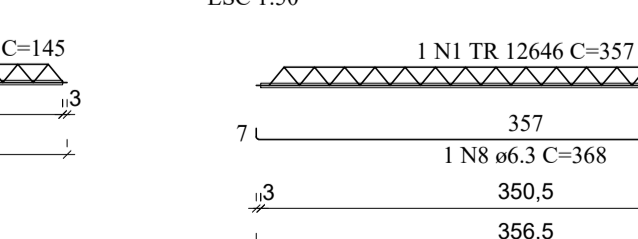
VT236a (7 unidades)
(L236)
ESC 1:50



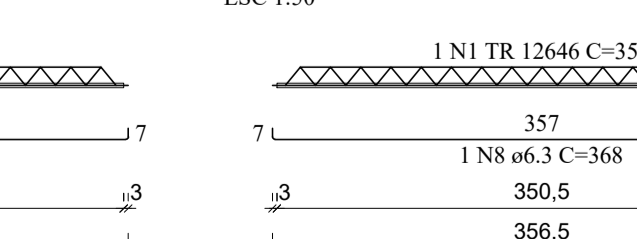
VT237a (7 unidades)
(L237)
ESC 1:50



VT238a (7 unidades)
(L238)
ESC 1:50



VT239a (7 unidades)
(L239)
ESC 1:50



VT211a (7 unidades)
(L211)
ESC 1:50



VT212a (7 unidades)
(L212)
ESC 1:50



| | | | |
|----------------------------|----------|--------------------------------|--------|
| REV. 03 | 23/04/21 | INSERÇÃO DE MICTÓRIOS | DAC |
| REV. 02 | 18/03/21 | ALTERAÇÃO DO ACESSO DE SERVIÇO | DAC |
| REV. 01 | 16/12/20 | ALTERAÇÃO DE LAYOUT | DAC |
| REV. 00 | 27/11/20 | EMIÇÃO INICIAL | DAC |
| REVISÃO: DATA : DESCRIÇÃO: | | | RESP.: |

CLIENTE

Prefeitura Municipal de Pouso Alegre

PROJETO

DAC Engenharia

Rua Miguel Vianna, nº 81, Sala 12
Bairro Morro Chic
CEP: 37500-080 - Itajubá / MG
Tel: (35) 3623-5720
www.dacengenharia.com.br

GERÊNCIA DE PROJETOS
DENIS DE SOUZA SILVA CREA: MG-127.216/D

COORDENAÇÃO DE PROJETOS
ALOISIO CAETANO FERREIRA CREA: MG-97.132/D

RESPONSÁVEL TÉCNICO
ENGR. CIVIL FLÁVIA C. BARBOSA CREA: MG-187.842/D

PROJETO
ENGR. SC. WILLIAM BARADEL LARI

DESENHO
ENGR. SC. WILLIAM BARADEL LARI

EMPREENDIMENTO

IMPLANTAÇÃO DA ESCOLA CIDADE JARDIM

ENDEREÇO
AVENIDA CAMILO DE BARROS LARAIA
POUSO ALEGRE - MINAS GERAIS

DISCIPLINA
ESTRUTURAL

FASE DO PROJETO
EXECUTIVO

ASSUNTO
PROJETO DE ESTRUTURA EM CONCRETO ARMADO - PRÉDIO A
DETALHAMENTO DAS ARMADURAS LAJES

FOLHA Nº.
25/49