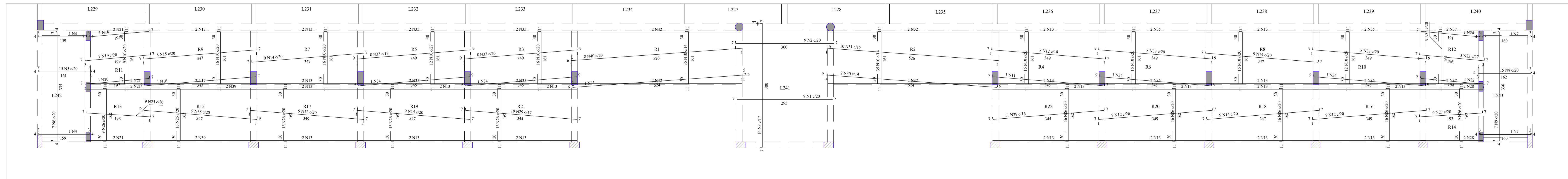
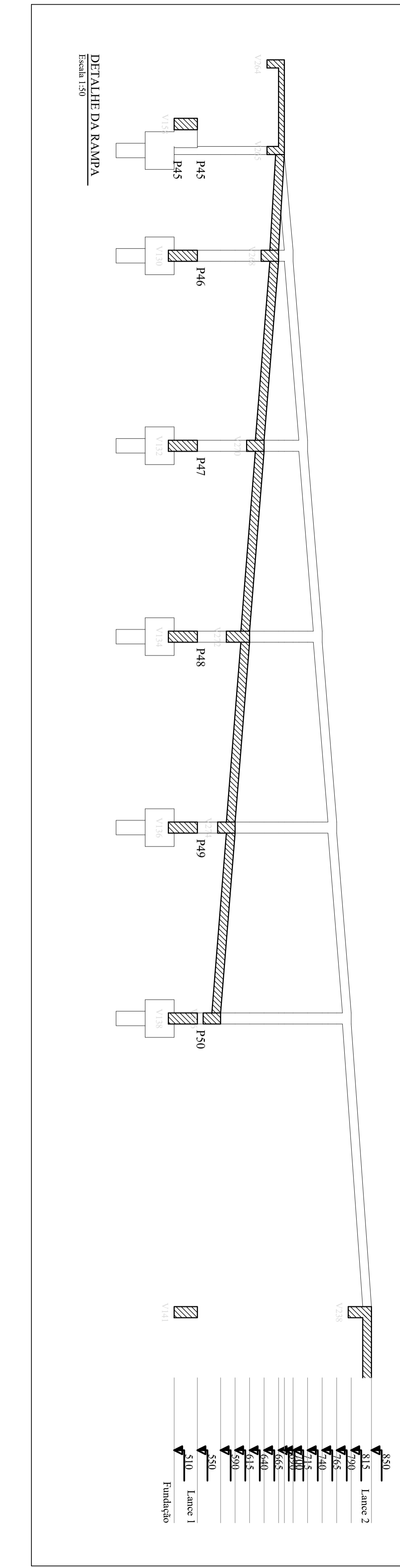


ARMAÇÃO NEGATIVA DAS LAJES DO PAVIMENTO LANCE 2
Escala 1:50

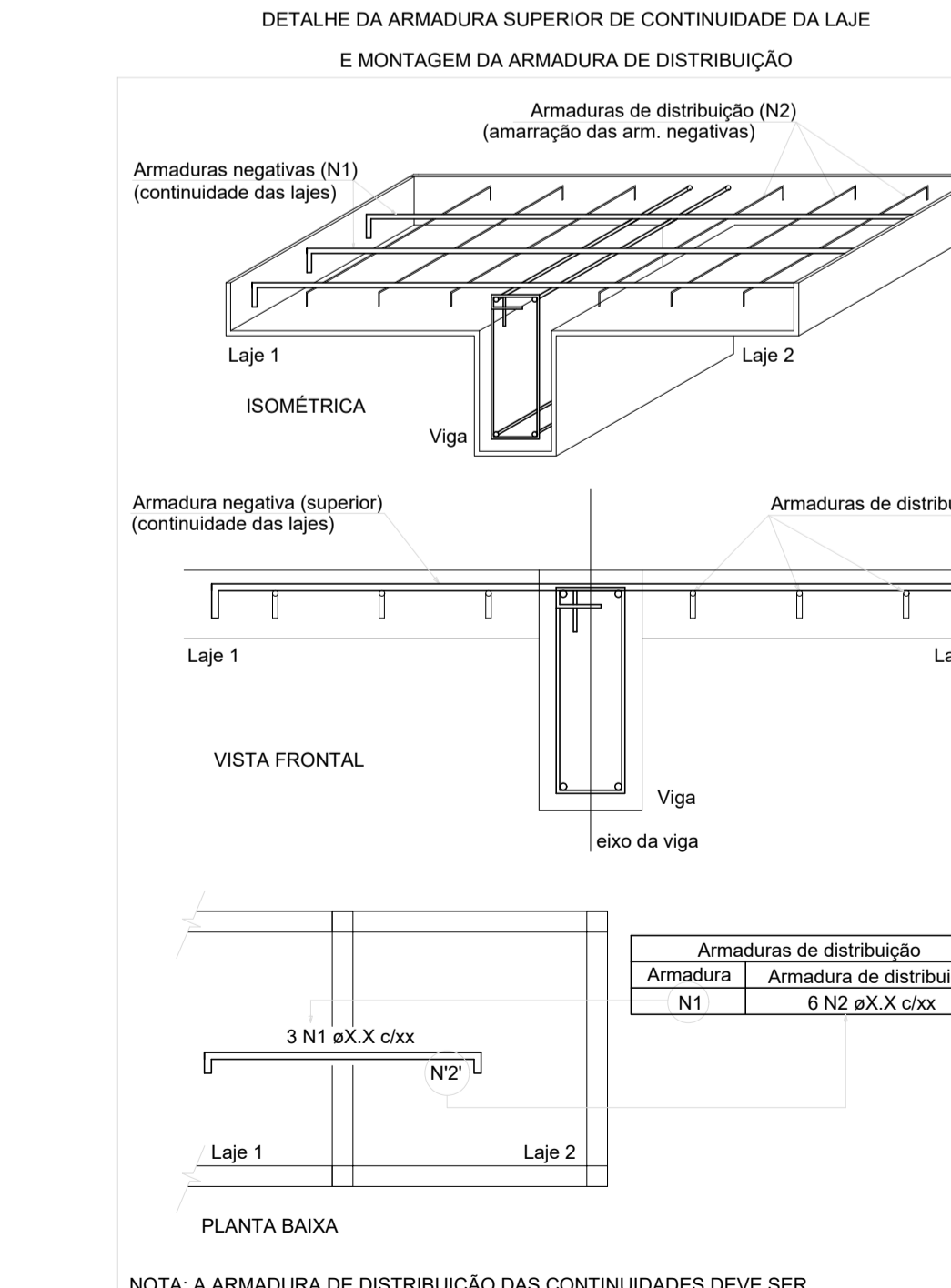


ARMAÇÃO POSITIVA DAS LAJES DO PAVIMENTO LANCE 2
Escala 1:50



Armadura de distribuição

Armadura	Armadura de distribuição	Armadura de distribuição	
N36	5 N3 a5.0/21 C-357	N36	5 N3 a5.0/21 C-357
N37	14 N2 a5.0/9 C-165	N37	17 N1 a5.0/21 C-329
N38	14 N2 a5.0/9 C-165	N38	5 N3 a5.0/21 C-359
N39	5 N3 a5.0/21 C-359	N39	17 N1 a5.0/21 C-329
N40	3 N4 a5.0/21 C-359	N40	5 N3 a5.0/21 C-359
N41	3 N4 a5.0/21 C-359	N41	17 N1 a5.0/21 C-329
N42	3 N4 a5.0/21 C-359	N42	5 N3 a5.0/21 C-359
N43	3 N4 a5.0/21 C-359	N43	17 N1 a5.0/21 C-329
N44	3 N4 a5.0/21 C-359	N44	5 N3 a5.0/21 C-359
N45	3 N4 a5.0/21 C-359	N45	17 N1 a5.0/21 C-329
N46	3 N4 a5.0/21 C-359	N46	5 N3 a5.0/21 C-359
N47	3 N4 a5.0/21 C-359	N47	17 N1 a5.0/21 C-329
N48	3 N4 a5.0/21 C-359	N48	5 N3 a5.0/21 C-359
N49	3 N4 a5.0/21 C-359	N49	17 N1 a5.0/21 C-329
N50	3 N4 a5.0/21 C-359	N50	5 N3 a5.0/21 C-359
N51	3 N4 a5.0/21 C-359	N51	17 N1 a5.0/21 C-329
N52	3 N4 a5.0/21 C-359	N52	5 N3 a5.0/21 C-359
N53	3 N4 a5.0/21 C-359	N53	17 N1 a5.0/21 C-329
N54	3 N4 a5.0/21 C-359	N54	5 N3 a5.0/21 C-359
N55	3 N4 a5.0/21 C-359	N55	17 N1 a5.0/21 C-329
N56	3 N4 a5.0/21 C-359	N56	5 N3 a5.0/21 C-359
N57	3 N4 a5.0/21 C-359	N57	17 N1 a5.0/21 C-329
N58	3 N4 a5.0/21 C-359	N58	5 N3 a5.0/21 C-359
N59	3 N4 a5.0/21 C-359	N59	17 N1 a5.0/21 C-329
N60	3 N4 a5.0/21 C-359	N60	5 N3 a5.0/21 C-359
N61	3 N4 a5.0/21 C-359	N61	17 N1 a5.0/21 C-329
N62	3 N4 a5.0/21 C-359	N62	5 N3 a5.0/21 C-359
N63	3 N4 a5.0/21 C-359	N63	17 N1 a5.0/21 C-329



RELAÇÃO DO AÇO

Negativos						Positivos					
CAISO	N	DIAM	QUANT	C.UNIT	C.TOTAL	CAISO	N	DIAM	QUANT	C.UNIT	C.TOTAL
		(mm)		(cm)	(cm)			(mm)		(cm)	(cm)
CAISO	1	5.0	20	192	3440	CAISO	2	6.3	9	306	2254
	3	5.0	60	558	21480		3	5.0	60	558	21480
	5	5.0	180	1620	81000		4	6.3	12	167	1034
	6	5.0	36	335	18760		5	5.0	36	335	18760
	7	5.0	36	335	18760		6	6.3	12	167	1034
	8	5.0	36	335	18760		7	5.0	36	335	18760
	9	5.0	36	335	18760		8	6.3	12	167	1034
	10	5.0	36	335	18760		9	5.0	36	335	18760
	11	5.0	36	335	18760		10	6.3	12	167	1034
	12	5.0	36	335	18760		11	5.0	36	335	18760
	13	5.0	36	335	18760		12	6.3	12	167	1034
	14	5.0	36	335	18760		13	5.0	36	335	18760
	15	5.0	36	335	18760		14	6.3	12	167	1034
	16	5.0	36	335	18760		15	5.0	36	335	18760
	17	5.0	36	335	18760		16	6.3	12	167	1034
	18	5.0	36	335	18760		17	5.0	36	335	18760
	19	5.0	36	335	18760		18	6.3	12	167	1034
	20	5.0	36	335	18760		19	5.0	36	335	18760
	21	5.0	36	335	18760		20	6.3	12	167	1034
	22	5.0	36	335	18760		21	5.0	36	335	18760
	23	5.0	36	335	18760		22	6.3	12	167	1034
	24	5.0	36	335	18760		23	5.0	36	335	18760
	25	5.0	36	335	18760		24	6.3	12	167	1034
	26	5.0	36	335	18760		25	5.0	36	335	18760
	27	5.0	36	335	18760		26	6.3	12	167	1034
	28	5.0	36	335	18760		27	5.0	36	335	18760
	29	5.0	36	335	18760		28	6.3	12	167	1034
	30	5.0	36	335	18760		29	5.0	36	335	18760
	31	5.0	36	335	18760		30	6.3	12	167	1034
	32	5.0	36	335	18760		31	5.0	36	335	18760
	33	5.0	36	335	18760		32	6.3	12	167	1034
	34	5.0	36	335	18760		33	5.0	36	335	18760
	35	5.0	36	335	18760		34	6.3	12	167	1034
	36	5.0	36	335	18760		35	5.0	36	335	18760
	37	5.0	36	335	18760		36	6.3	12	167	1034
	38	5.0	36	335	18760		37	5.0	36	335	18760
	39	5.0	36	335	18760		38	6.3	12	167	1034
	40	5.0	36	335	18760		39	5.0	36	335	18760
	41	5.0	36	335	18760		40	6.3	12	167	1034
	42	5.0	36	335	18760		41	5.0	36	335	18760
	43	5.0	36	335	18760		42	6.3	12	167	1034
	44	5.0	36	335	18760		43	5.0	36	335	18760
	45	5.0	36	335	18760		44	6.3	12	167	1034
	46	5.0	36	335	18760		45	5.0	36	335	18760
	47	5.0	36	335	18760		46	6.3	12	167	1034
	48	5.0	36	335	18760		47	5.0	36	335	18760
	49	5.0	36	335	18760		48	6.3	12	167	1034
	50	5.0	36	335	18760		49	5.0	36	335	18760
	51	5.0	36	335	18760		50	6.3	12	167	1034
	52	5.0	36	335	18760		51	5.0	36	335	18760
	53	5.0	36	335	18760		52	6.3	12	167	1034
	54	5.0	36	335	18760		53	5.0	36	335	18760
	55	5.0	36	335	18760		54	6.3	12	167	1034
	56	5.0	36	335	18760		55	5.0	36	335	18760
	57	5.0	36	335	18760		56	6.3	12	167	1034
	58	5.0	36	335	18760		57	5.0	36	335	18760
	59	5.0	36	335	18760		58	6.3	12	167	1034
	60	5.0	36	335	18760		59	5.0	36	335	18760
	61	5.0	36	335	18760		60	6.3	12	167	1034
	62	5.0	36	335	18760		61	5.0	36	335	18760
	63	5.0	36	335	18760		62	6.3	12	167	1034
	64	5.0	36	335	18760		63	5.0	36	335	18760
	65	5.0	36	335	18760		64	6.3	12	167	1034
	66	5.0	36	335	18760		65	5.0	36	335	18760
	67	5.0	36	335	18760		66	6.3	12	167	1034
	68	5.0	36	335	18760		67	5.0	36	335	18760
	69	5.0	36	335	18760		68	6.3	12	167	1034
	70	5.0	36	335	18760		69	5.0	36	335	18760
	71	5.0	36	335	18760		70	6.3	12	167	1034
	72	5.0	36	335	18760		71	5.0	36	335	18760
	73	5.0	36	335	18760		72	6.3	12	167	1034
	74	5.0	36	335	18760		73	5.0	36	335	18760
	75	5.0	36	335	18760		74	6.3	12	167	1034
	76	5.0	36	335	18760		75	5.0	36	335	18760
	77	5.0	36	335	18760		76	6.3	12	167	1034
	78	5.0	36	335	18760		77	5.0	36	335	18760
	79	5.0	36	335	18760		78	6.3	12	167	1034
	80	5.0	36	335	18760		79	5.0	36	335	18760
	81	5.0	36	335	18760		80	6.3	12	167	1034
	82	5.0	36	335	18760		81	5.0	36	335	18760
	83	5.0	36	335	18760		82	6.3	12	167	1034
	84	5.0	36	335	18760		83	5.0	36	335	18760
	85	5.0	36	335	18760		84	6.3	12	167	1034
	86	5.0	36	335	18760		85	5.0	36	335	18760
	87	5.0	36	335	18760		86	6.3	12	167	1034
	88	5.0	36	335	18760		87	5.0	36	335	18760
	89	5.0	36	335	18760		88	6.3	12	167	1034
	90	5.0	36	335	18760		89	5.0	36	335	18760
	91	5.0	36	335	18760		90	6.3	12	167	1034
	92	5.0	36	335	18760		91	5.0	36	335	18760
	93	5.0	36	335	18760		92	6.3	12	167	1034
	94	5.0	36	335	18760		93	5.0	36	335	18760
	95	5.0	36	335	18760		94	6.3	12	167	1034
	96	5.0	36	335	18760		95	5.0	36	335	18760
	97	5.0	36	335	18760		96	6.3	12	167	1034
	98	5.0	36	335	18760		97	5.0	36	335	18760
	99	5.0	36	335	18760		98	6.3	12	167	1034
	100	5.0	36	335	18760		99	5.0	36	335	18760
	101	5.0	36	335	18760		100	6.3	12	167	1034
	102	5.0	36	335	18760		101	5.0	36	335	18760
	103	5.0	36	335	18760		102	6.3	12	167	1034
	104	5.0	36	335	18760		103	5.0	36	335	18760
	105	5.0	36	335	18760		104	6.3	12	167	1034
	106	5.0	36	335	18760		105	5.0	36	335	18760
	107	5.0	36	335	18760						