

RELAÇÃO DO AÇO

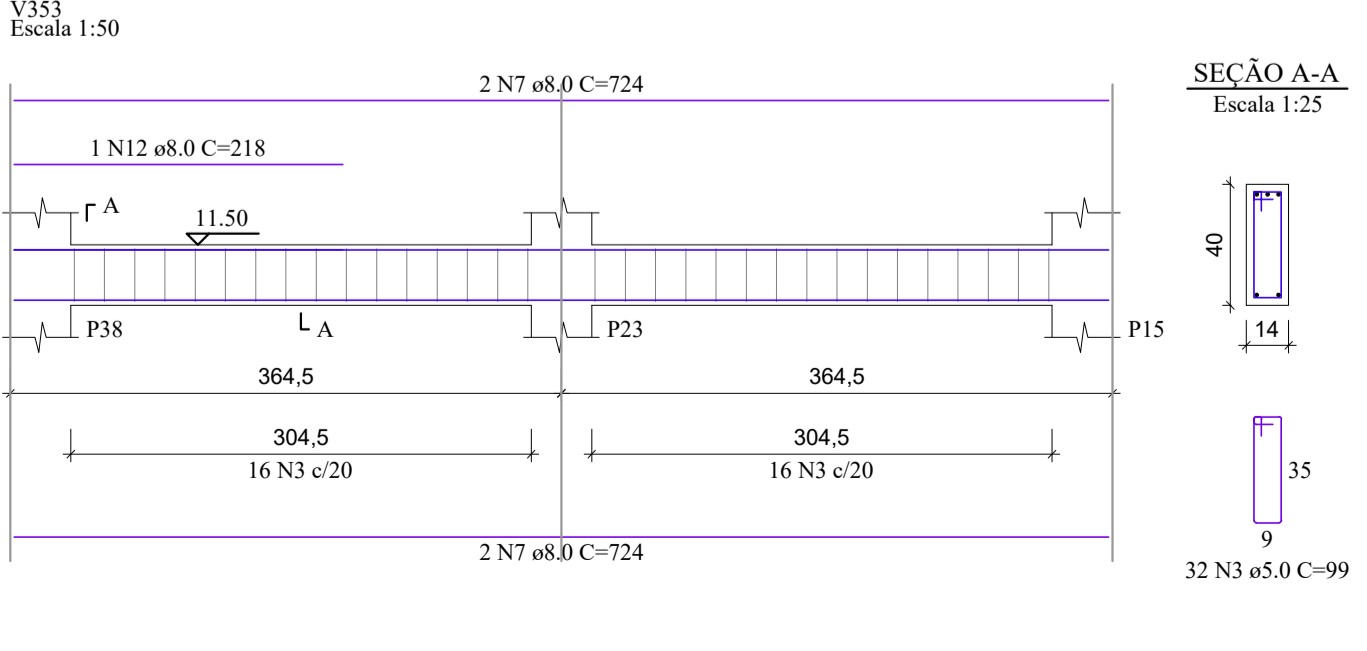
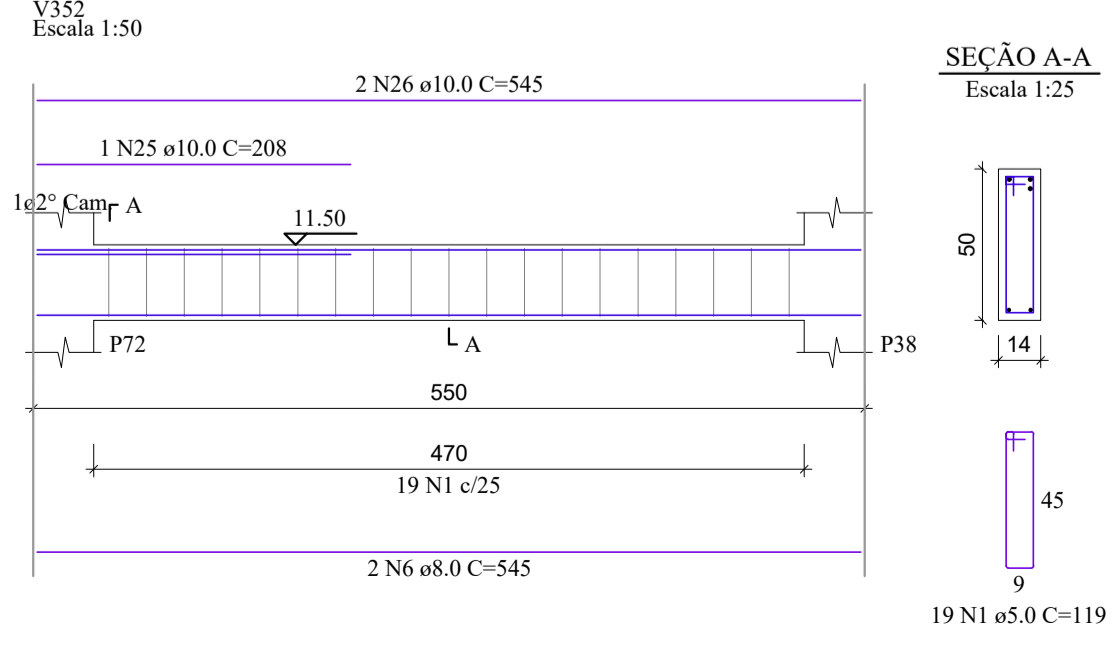
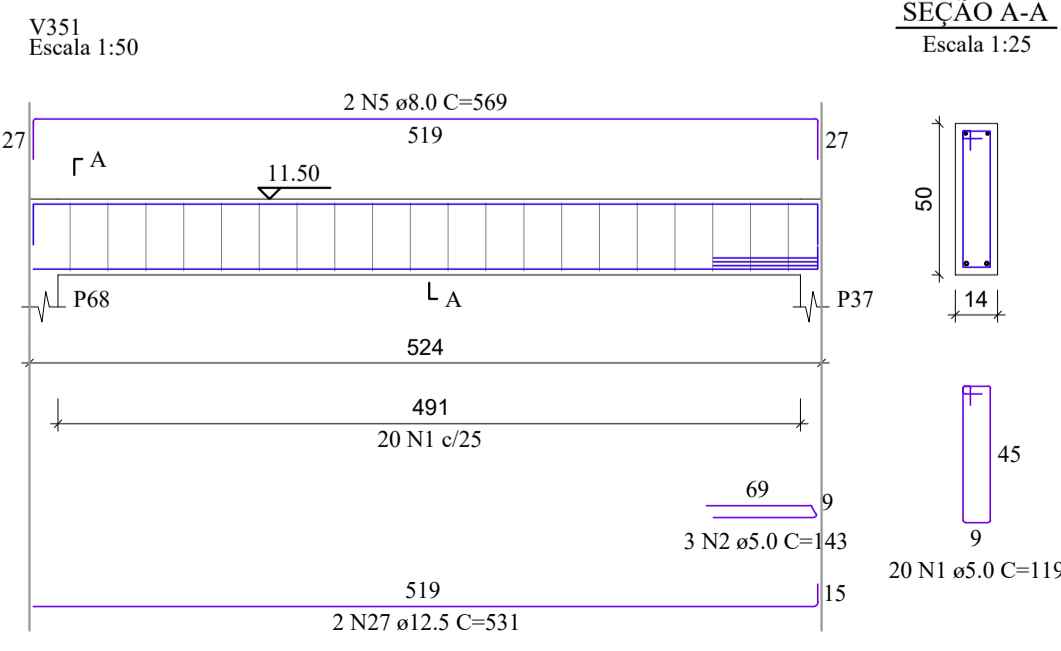
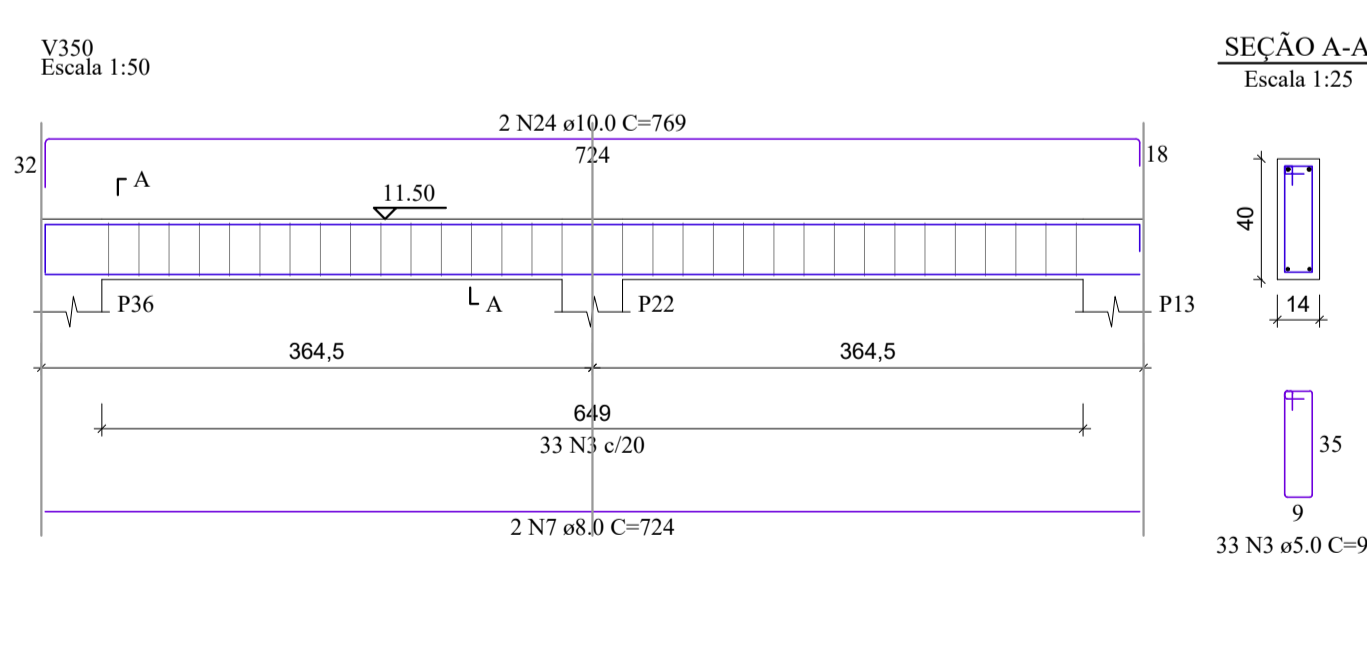
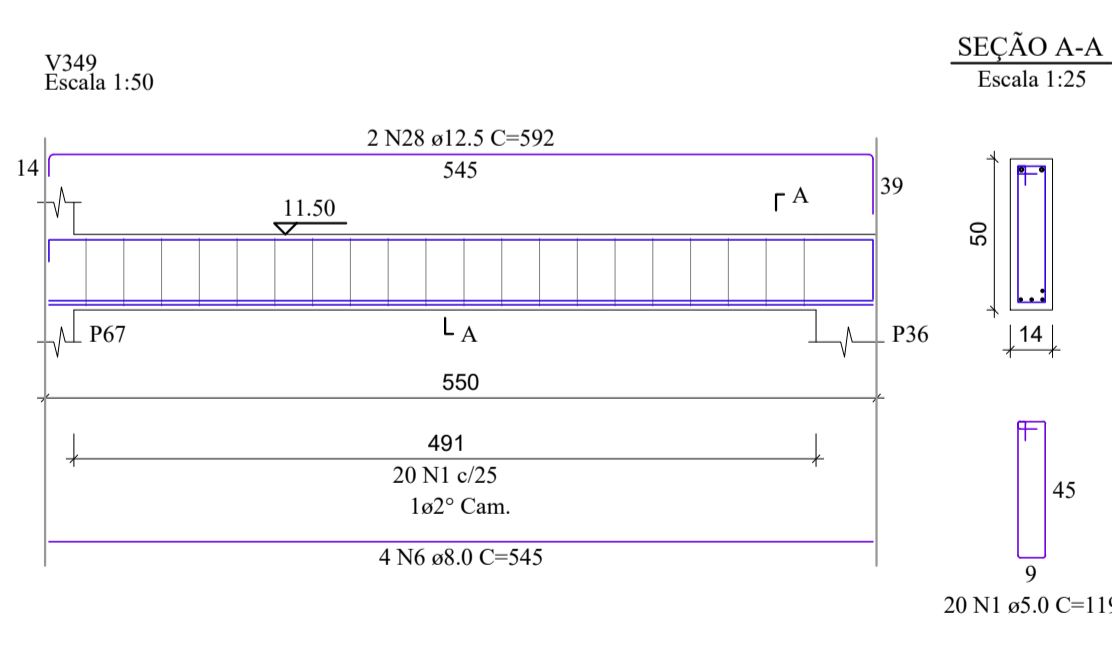
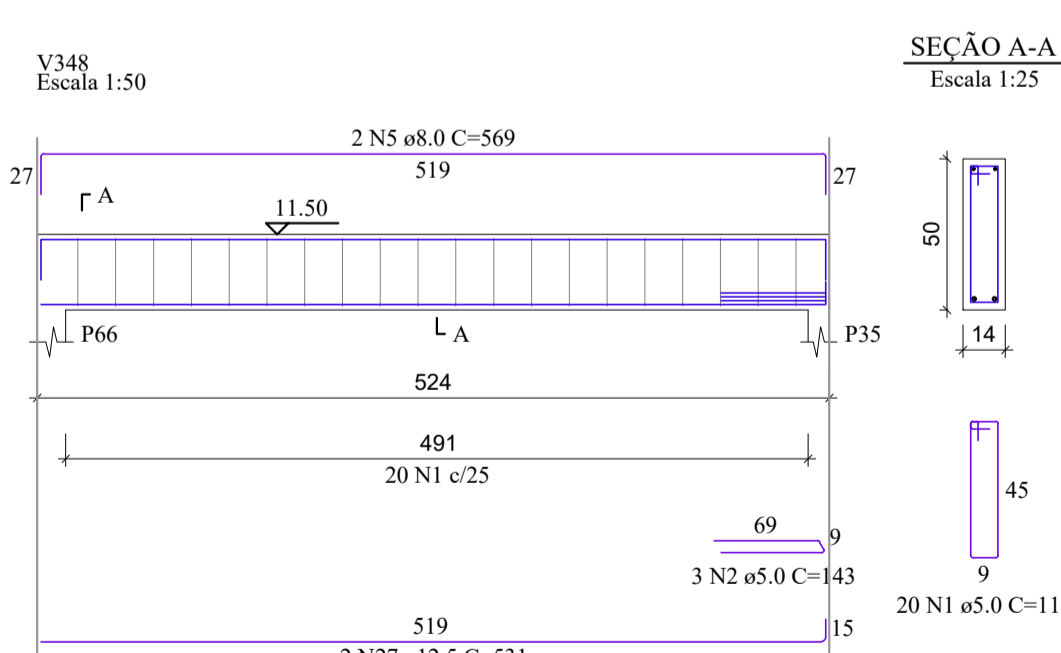
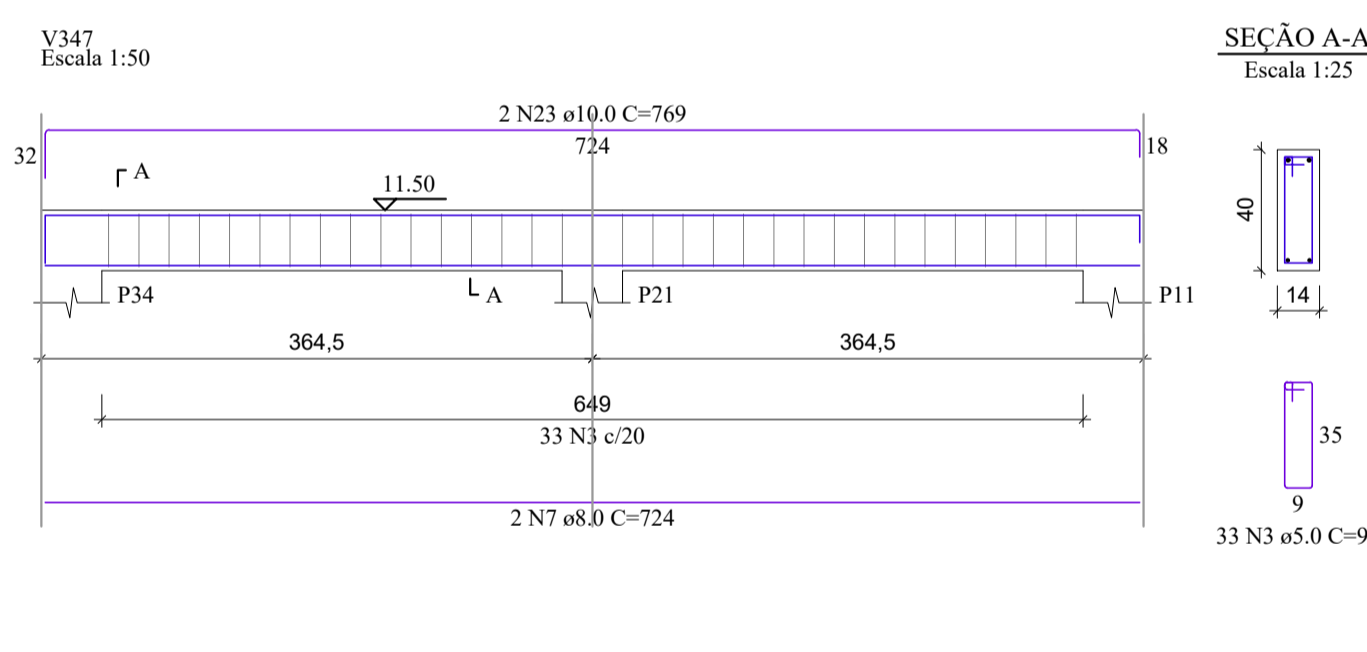
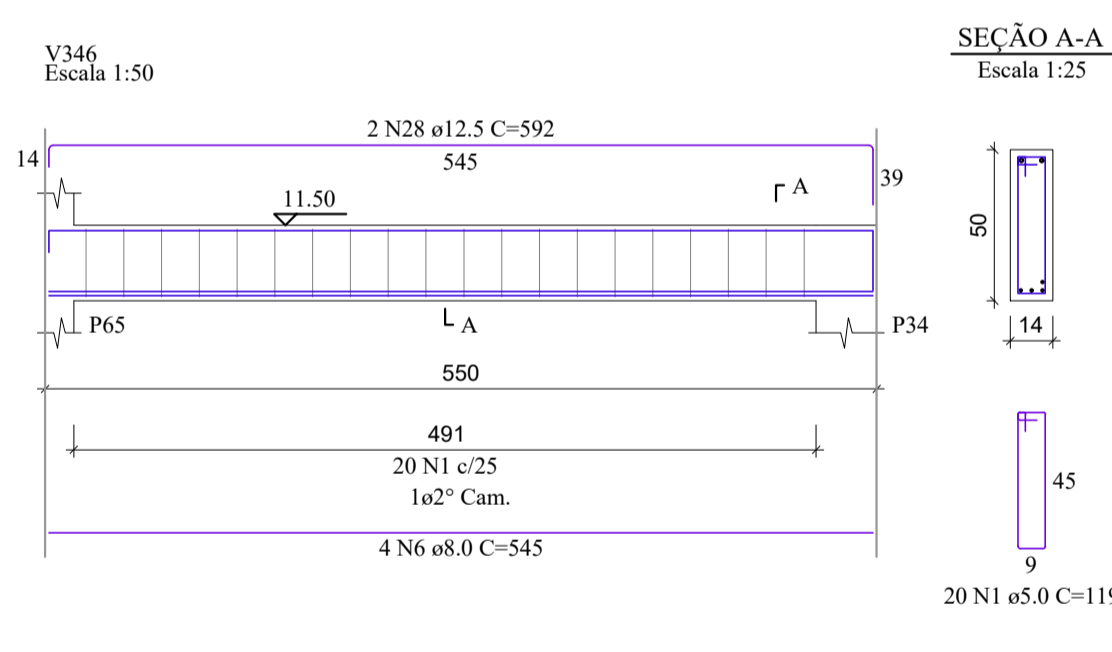
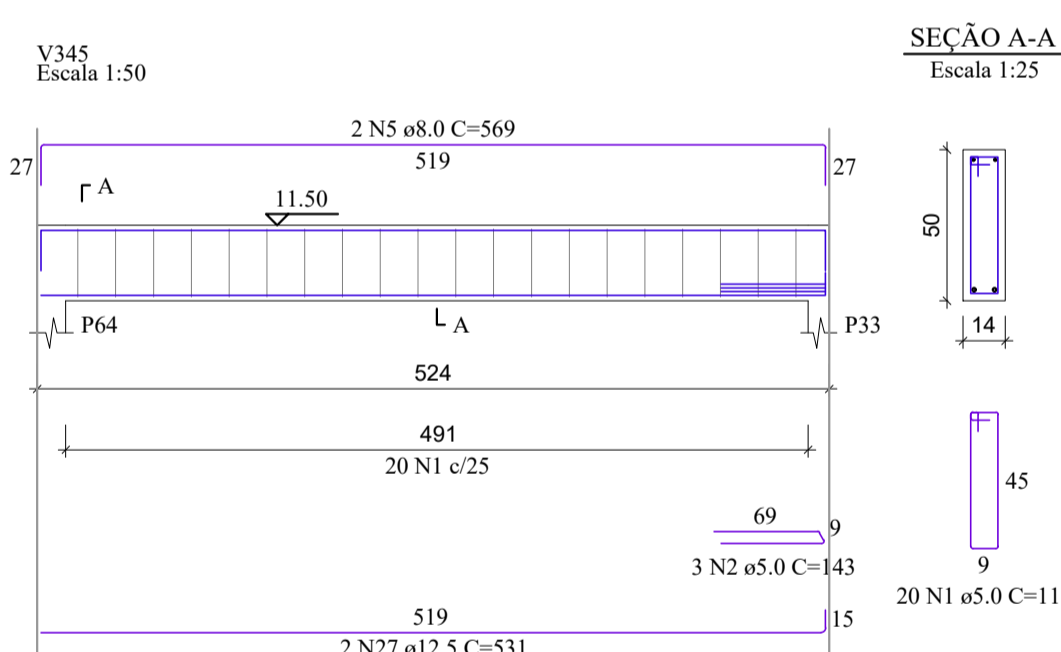
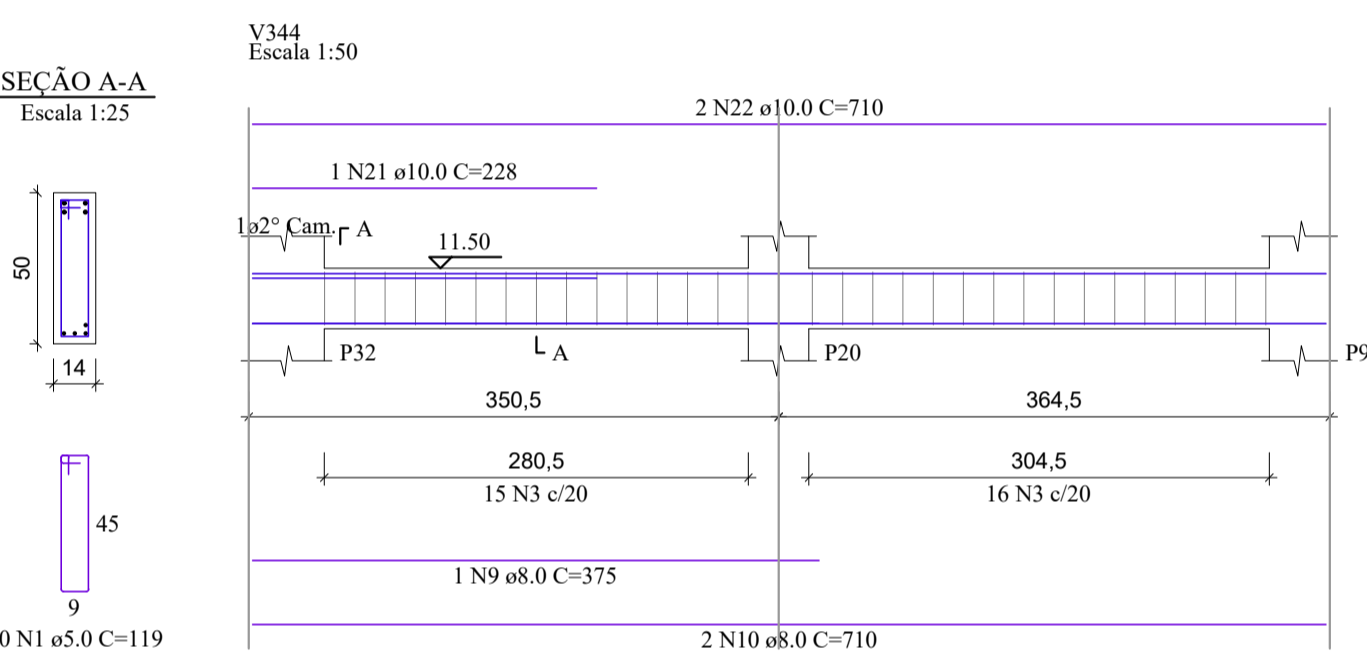
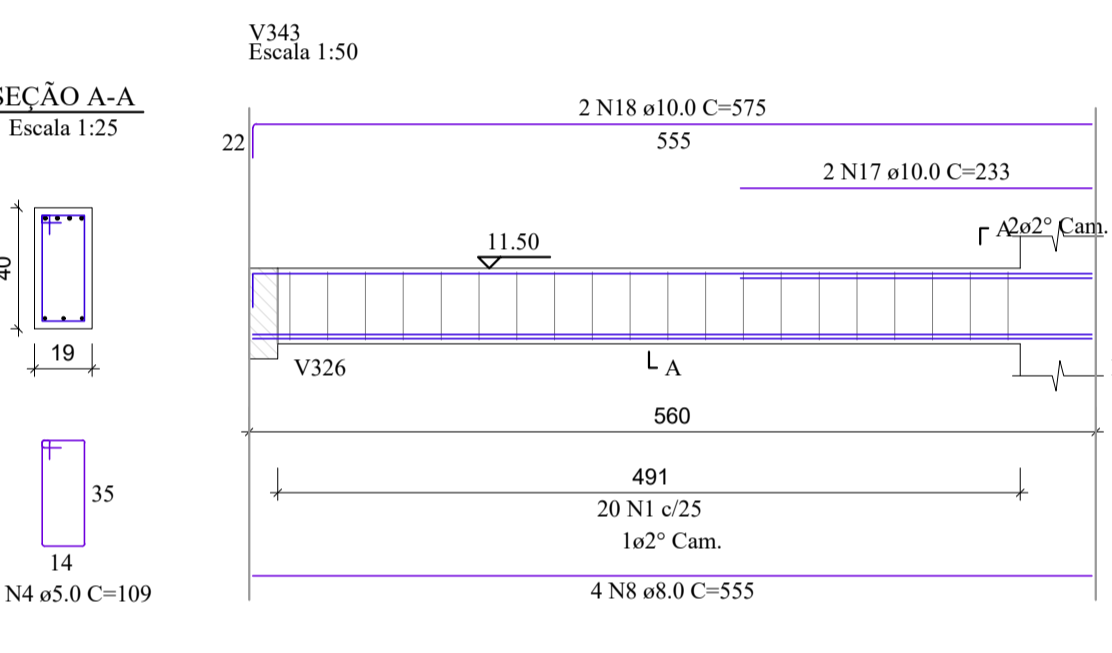
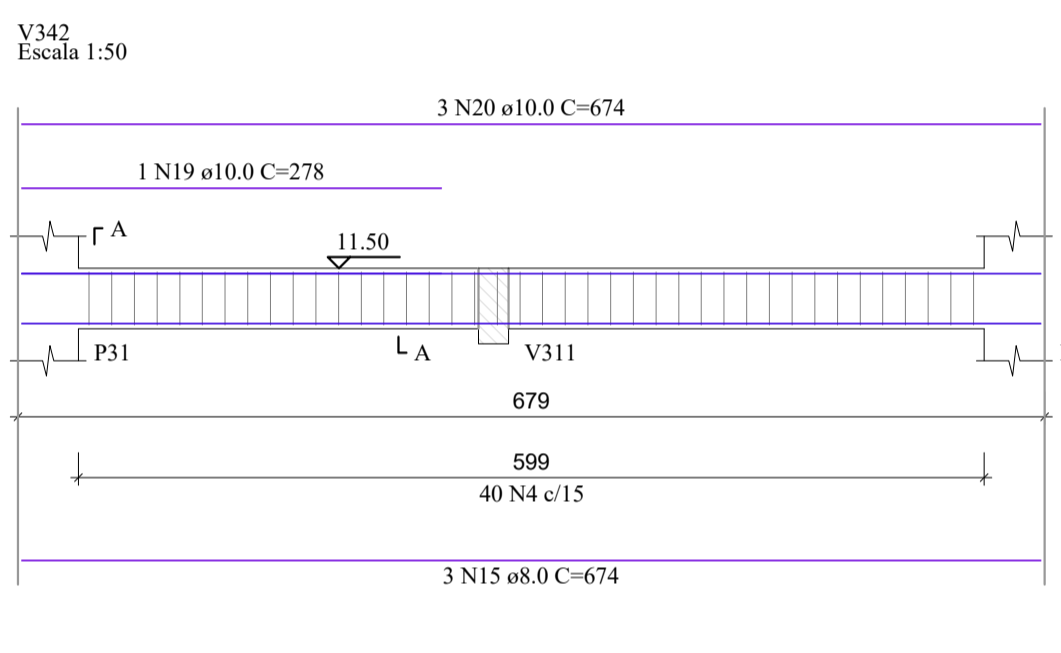
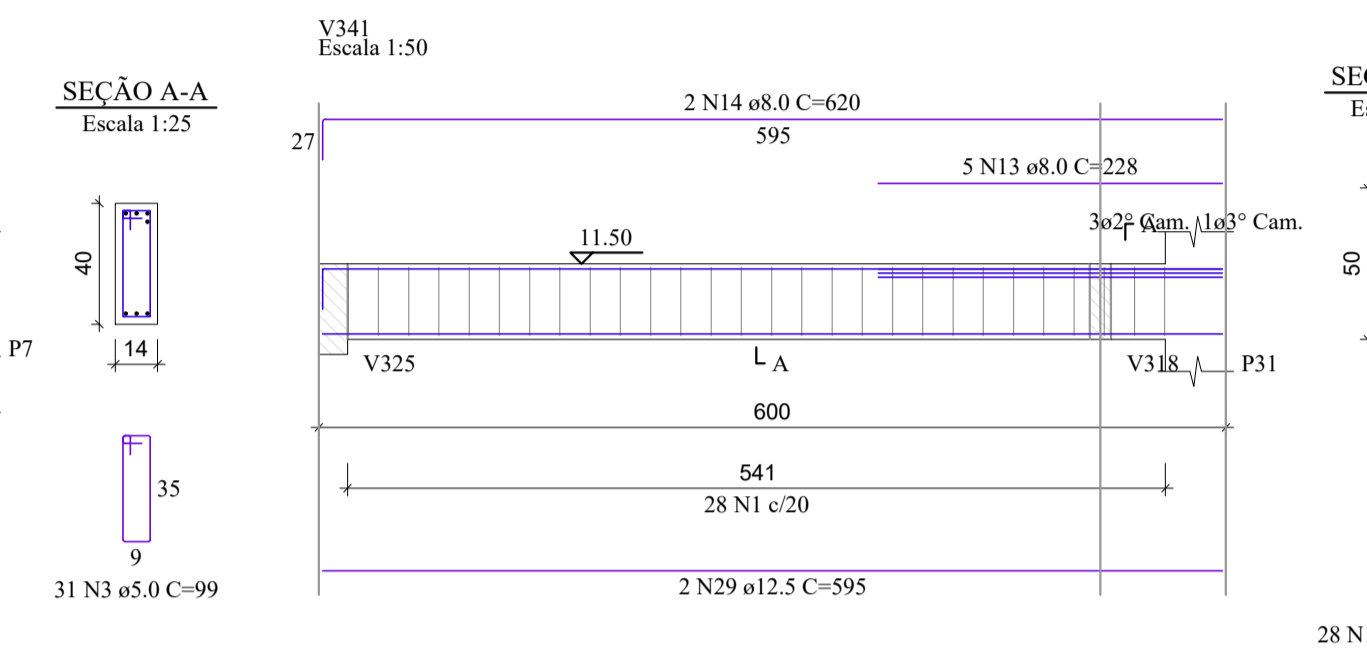
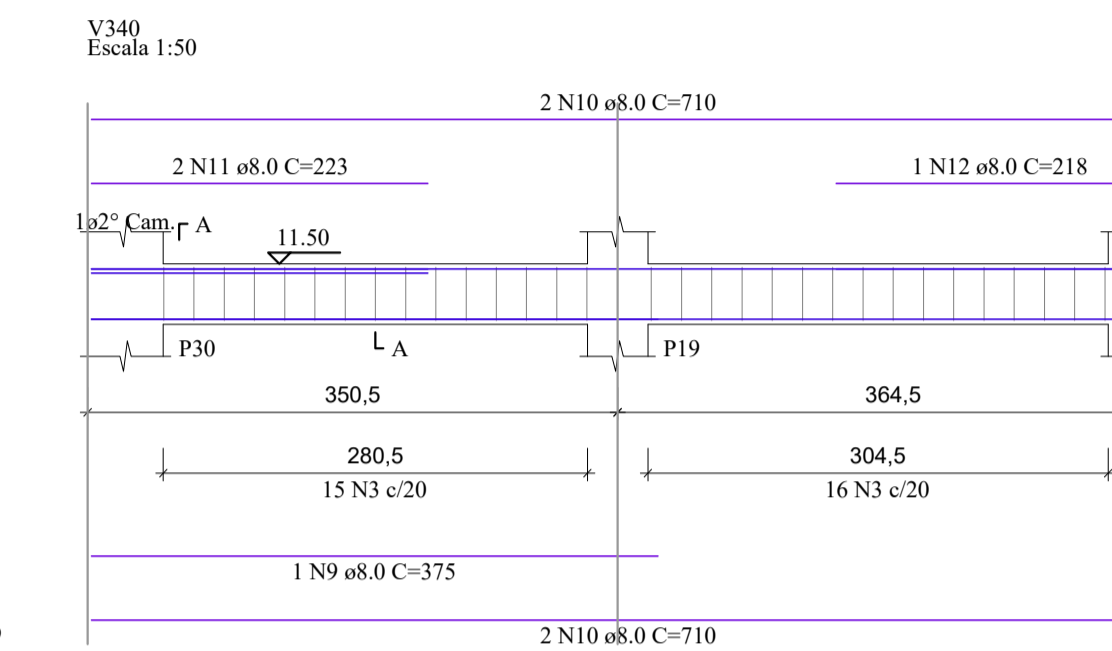
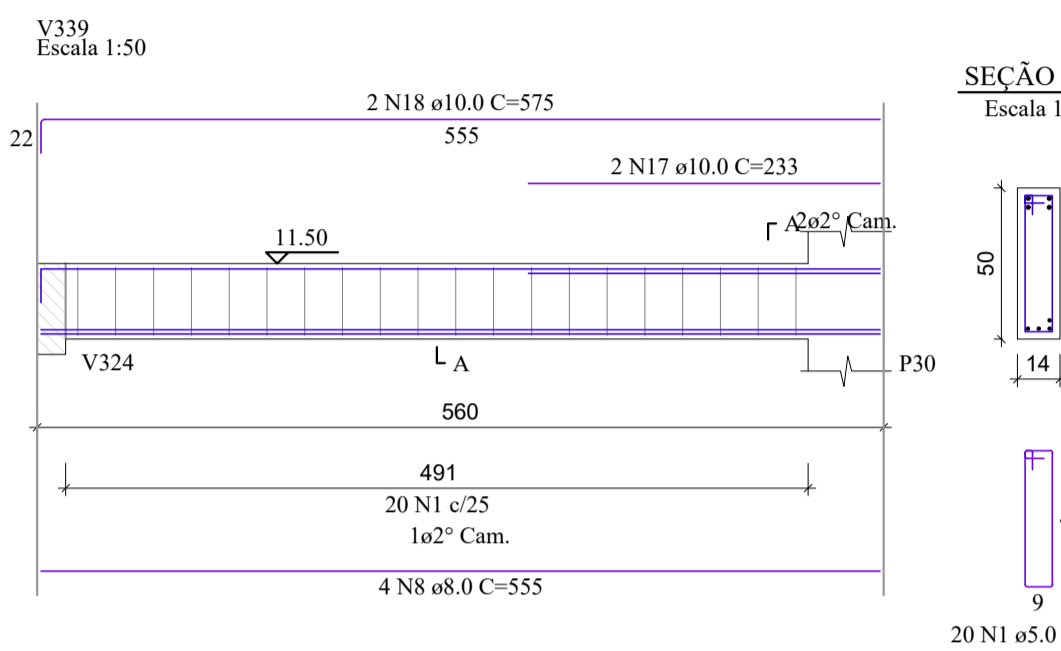
ACO	N	DIAM (mm)	QUANT	C.LIMIT (cm)	C.TOTAL (cm)
V335					
V336					
V337					
V338					
V339					
V340					
V341					
V342					
V343					
V344					
V345					
V346					
V347					
V348					
V349					
V350					
V351					
V352					
V353					

ACO	N	DIAM (mm)	QUANT	C.LIMIT (cm)	C.TOTAL (cm)
CA60	1	5.0	247	119	29393
	2	5.0	15	143	2145
	3	5.0	193	99	19107
	4	5.0	40	109	4360
CA50	5	8.0	10	569	5690
	6	8.0	14	545	7630
	7	8.0	10	724	7240
	8	8.0	8	555	4440
	9	8.0	2	375	750
	10	8.0	6	710	4260
	11	8.0	2	223	446
	12	8.0	2	218	436
	13	8.0	5	228	1140
	14	8.0	2	620	1240
	15	8.0	3	674	2022
	16	10.0	2	769	1538
	17	10.0	4	233	932
	18	10.0	4	575	2300
	19	10.0	1	278	278
	20	10.0	3	674	2022
	21	10.0	1	228	228
	22	10.0	2	710	1420
	23	10.0	2	769	1538
	24	10.0	2	769	1538
	25	10.0	1	208	208
	26	10.0	2	545	1090
	27	12.5	10	531	5310
	28	12.5	6	592	3552
	29	12.5	2	595	1190

RESUMO DO AÇO

ACO	DIAM (mm)	C.TOTAL (m)	PESO + 10% (kg)
CA50	8.0	352.9	153.2
	10.0	130.9	88.8
	12.5	100.5	106.5
CA60	5.0	550.1	93.3
PESO TOTAL (kg)			
CA50		348.5	
CA60		93.3	

Volume de concreto (C-30) = 7.53 m³  
Área de forma = 122.13 m²



REV. 03	23/04/21	INSERÇÃO DE MICTÓRIOS	DAC
REV. 02	18/03/21	ALTERAÇÃO DO ACESSO DE SERVIÇO	DAC
REV. 01	16/12/20	ALTERAÇÃO DE LAYOUT	DAC
REV. 00	27/11/20	EMISSÃO INICIAL	DAC
REVISÃO: DATA :	DESCRÇÃO:		RESP.:

CLIENTE

Prefeitura Municipal de Pouso Alegre

PROJETO

DAC Engenharia

Rua Miguel Vianna, nº 81, Sala 12  
Bairro Morro Chic  
CEP: 37500-080 - Itajubá / MG  
Tel: (35) 3623-5720  
www.dacengenharia.com.br

GERÊNCIA DE PROJETOS  
DENIS DE SOUZA SILVA CREA: MG-127.216/D

COORDENAÇÃO DE PROJETOS  
ALOSIO CAETANO FERREIRA CREA: MG-97.132/D

RESPONSÁVEL TÉCNICO  
ENGR. CIVIL FLÁVIA C. BARBOSA CREA: MG-187.842/D

PROJETO  
ENGR. SC. WILLIAM BARADEL LARI

DESENHO  
ENGR. SC. WILLIAM BARADEL LARI

EMPREENDIMENTO

**IMPLANTAÇÃO DA ESCOLA CIDADE JARDIM**

ENDEREÇO  
AVENIDA CAMILO DE BARROS LARIAIA  
POUSO ALEGRE - MINAS GERAIS

DISCIPLINA  
ESTRUTURAL

FASE DO PROJETO  
EXECUTIVO

ASSUNTO  
PROJETO DE ESTRUTURA EM CONCRETO ARMADO - PRÉDIO A  
DETALHAMENTO DAS ARMADURAS  
VIGAS

FOLHA Nº.  
21/49

DATA INICIAL  
27/11/2020

ESCALA  
INDICADA

REVISÃO  
R02

ARQUIVO  
DAC-PMPA-JAR-PE-EST-R03.DWG