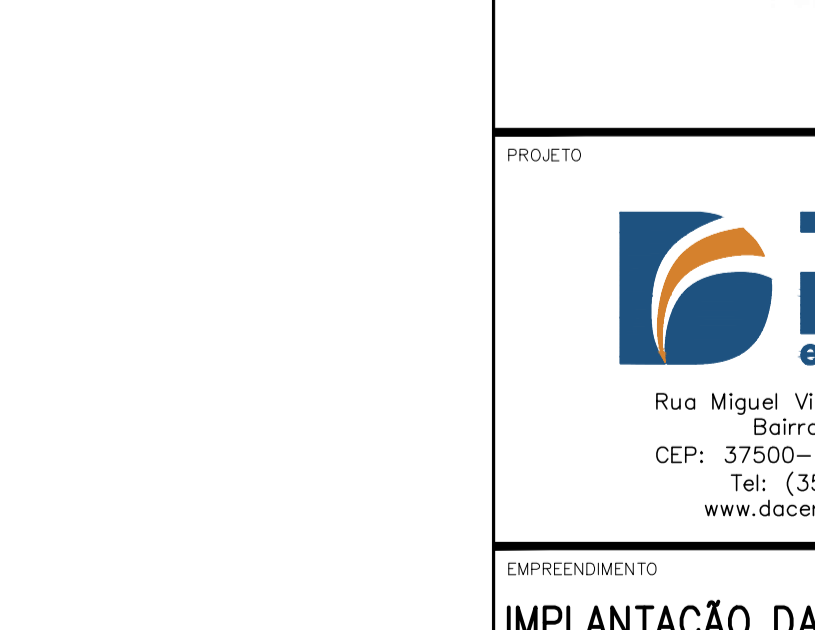
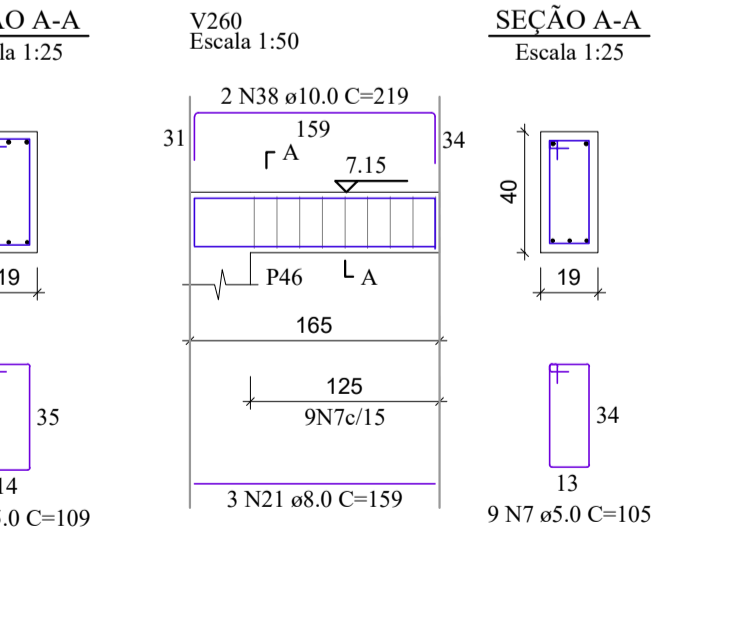
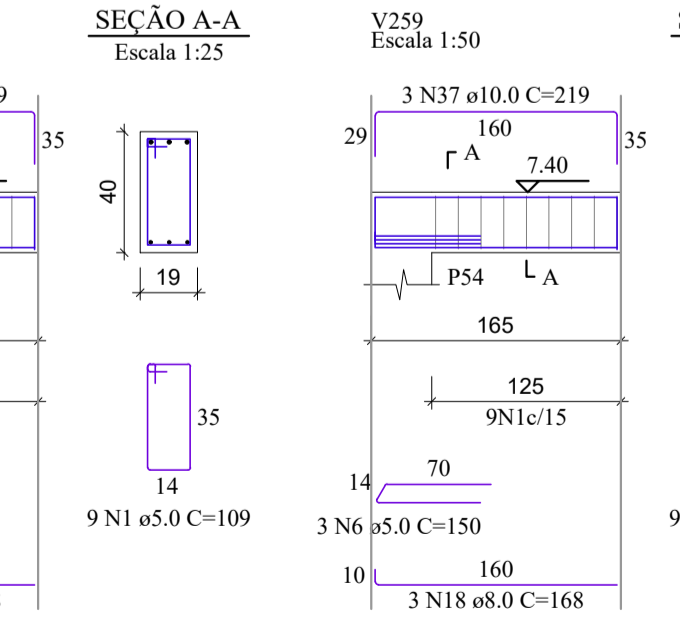
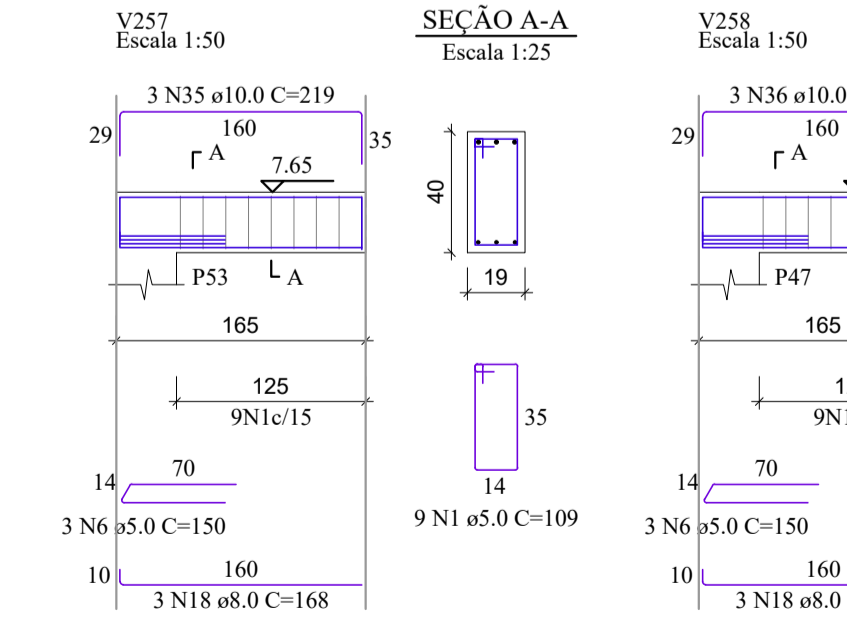
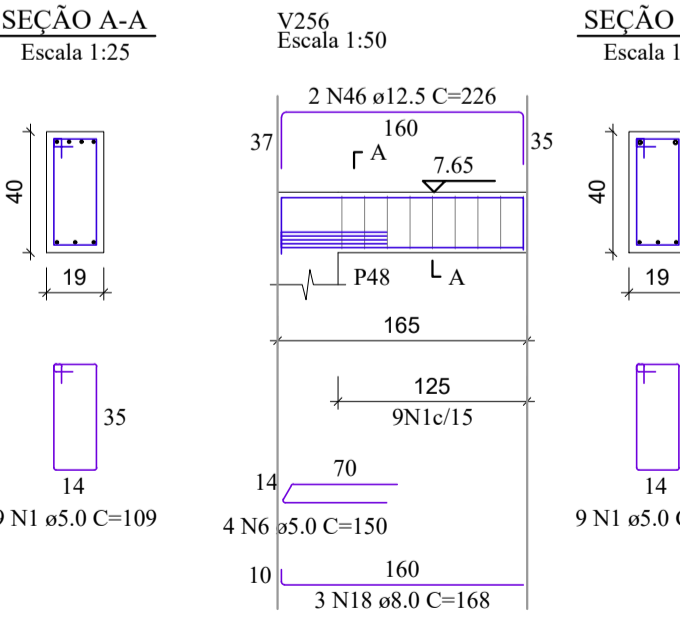
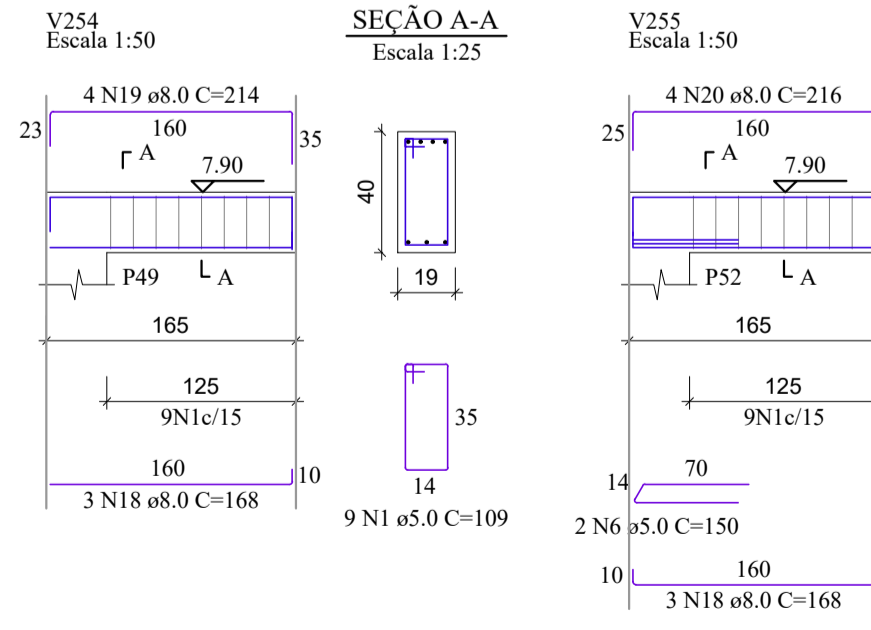
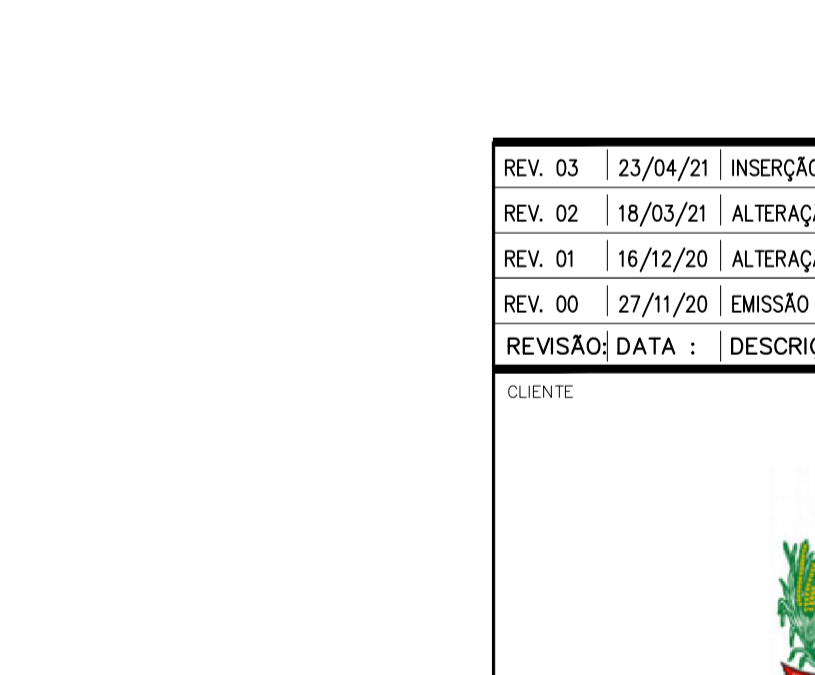
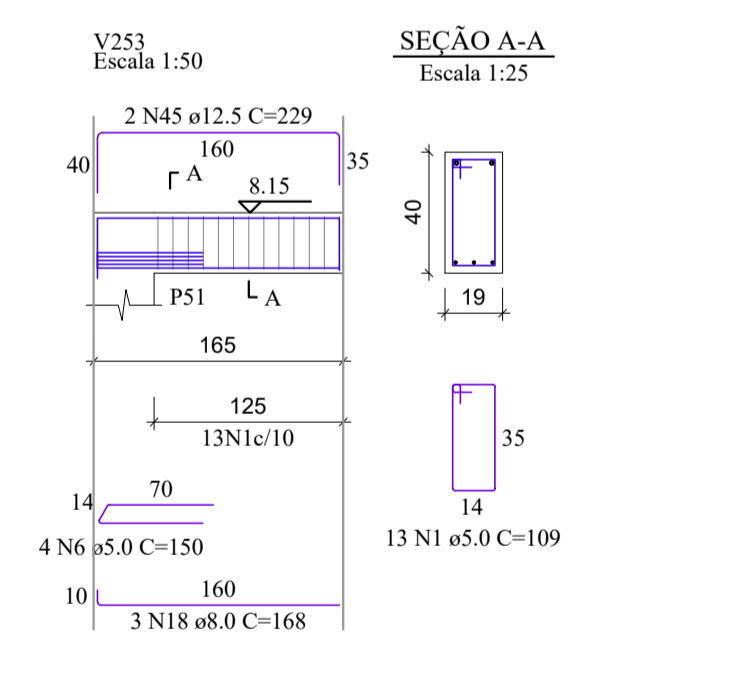
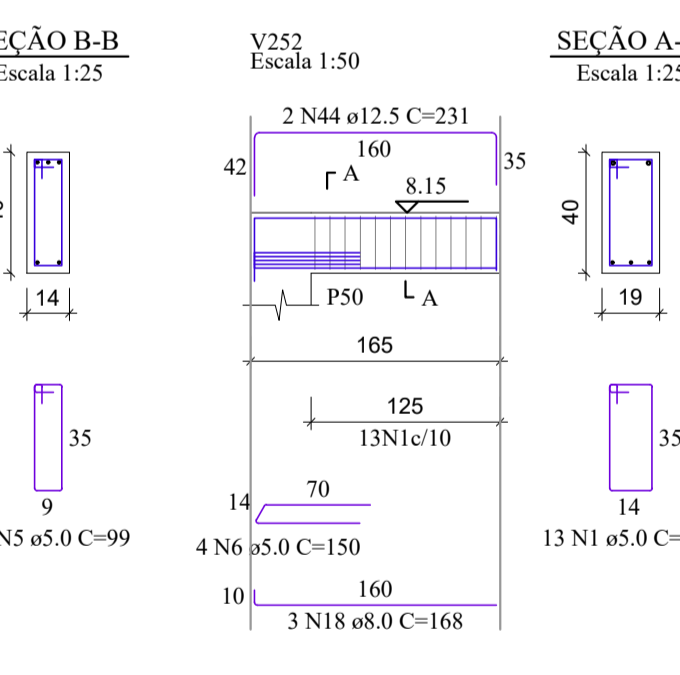
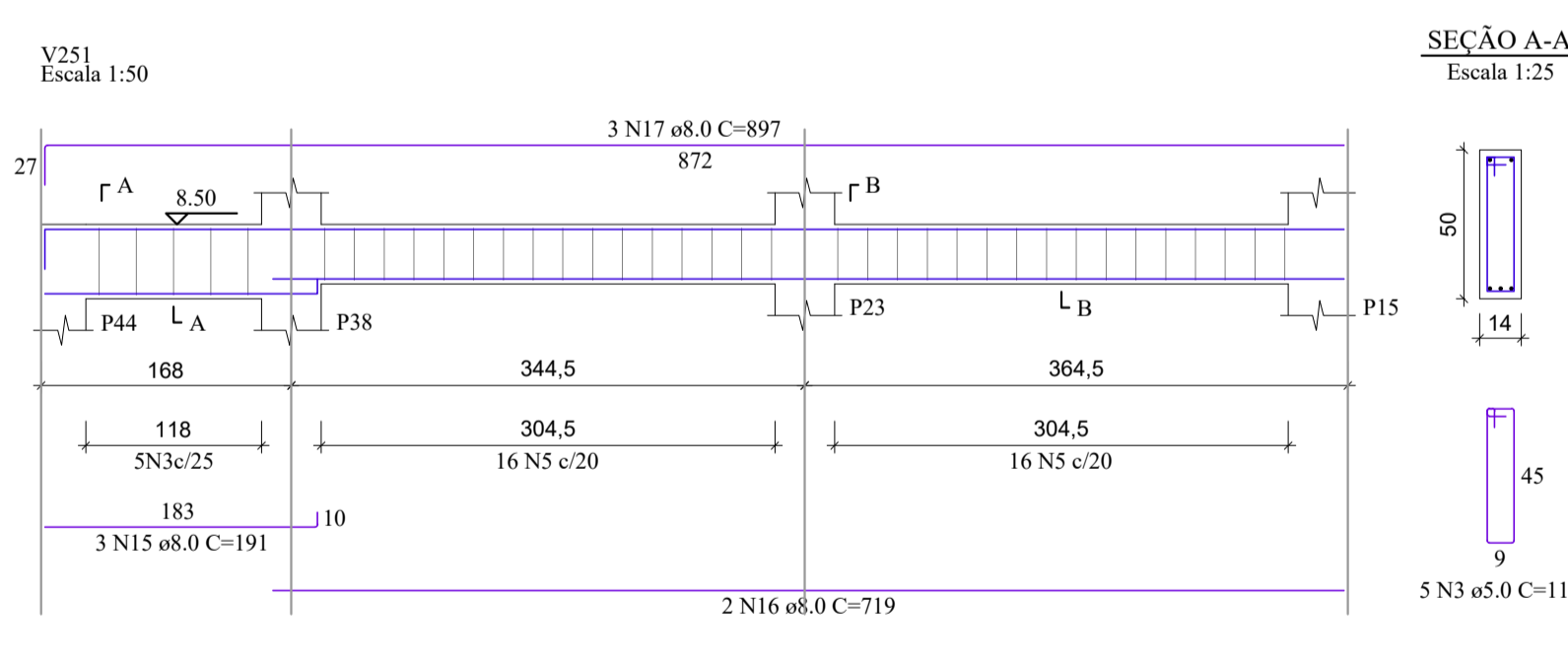
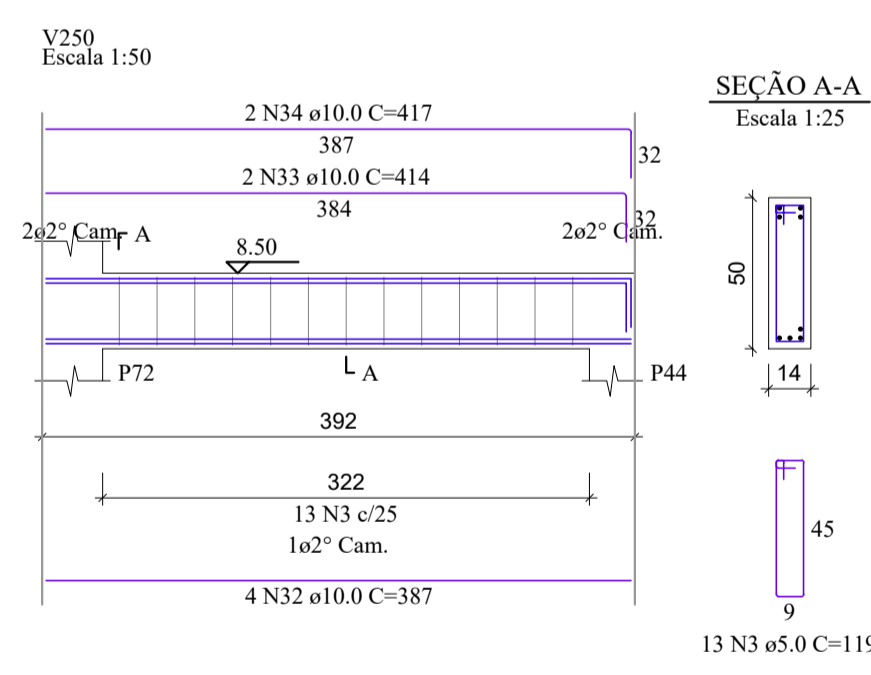
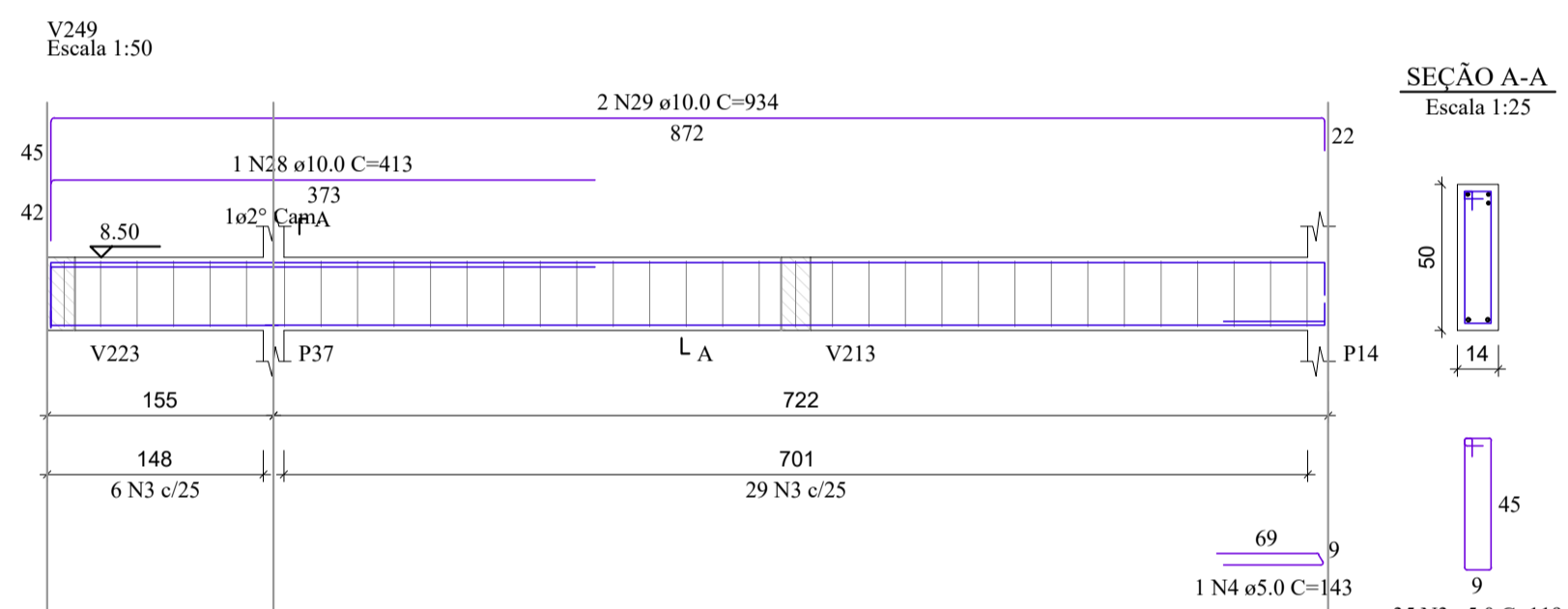
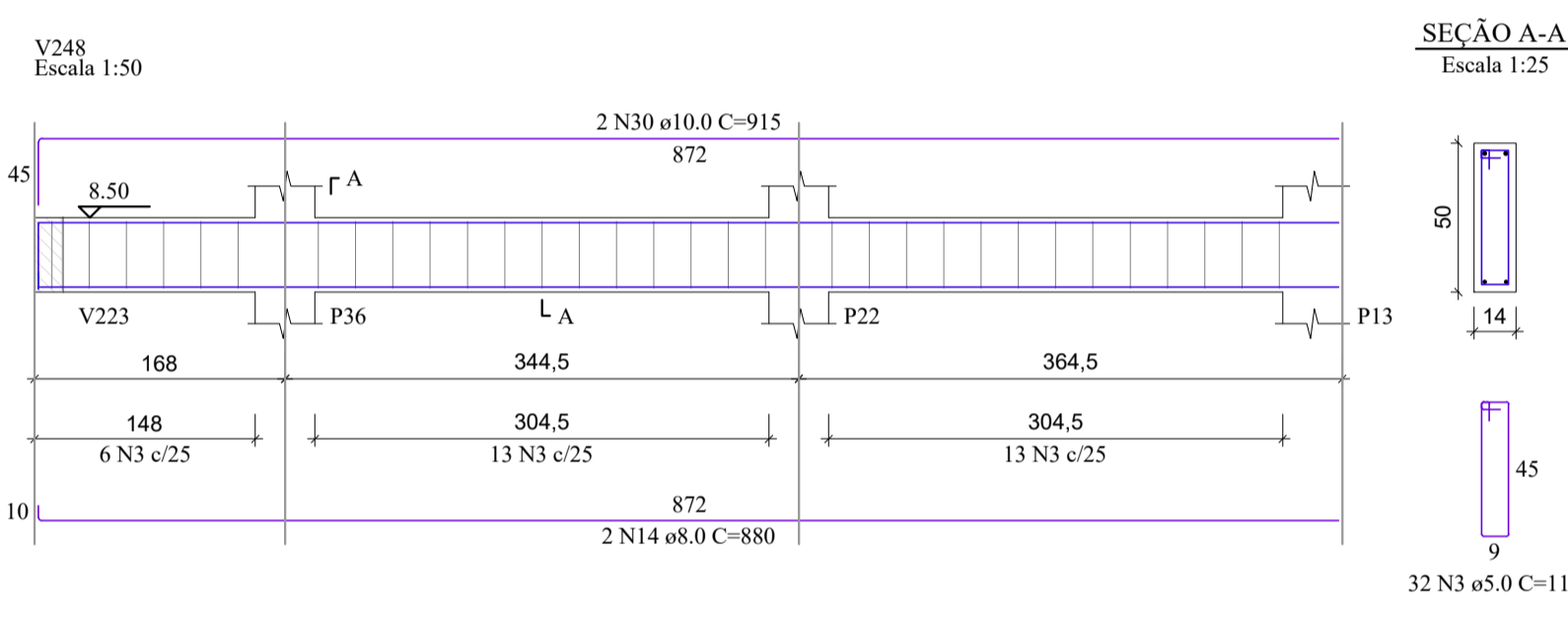
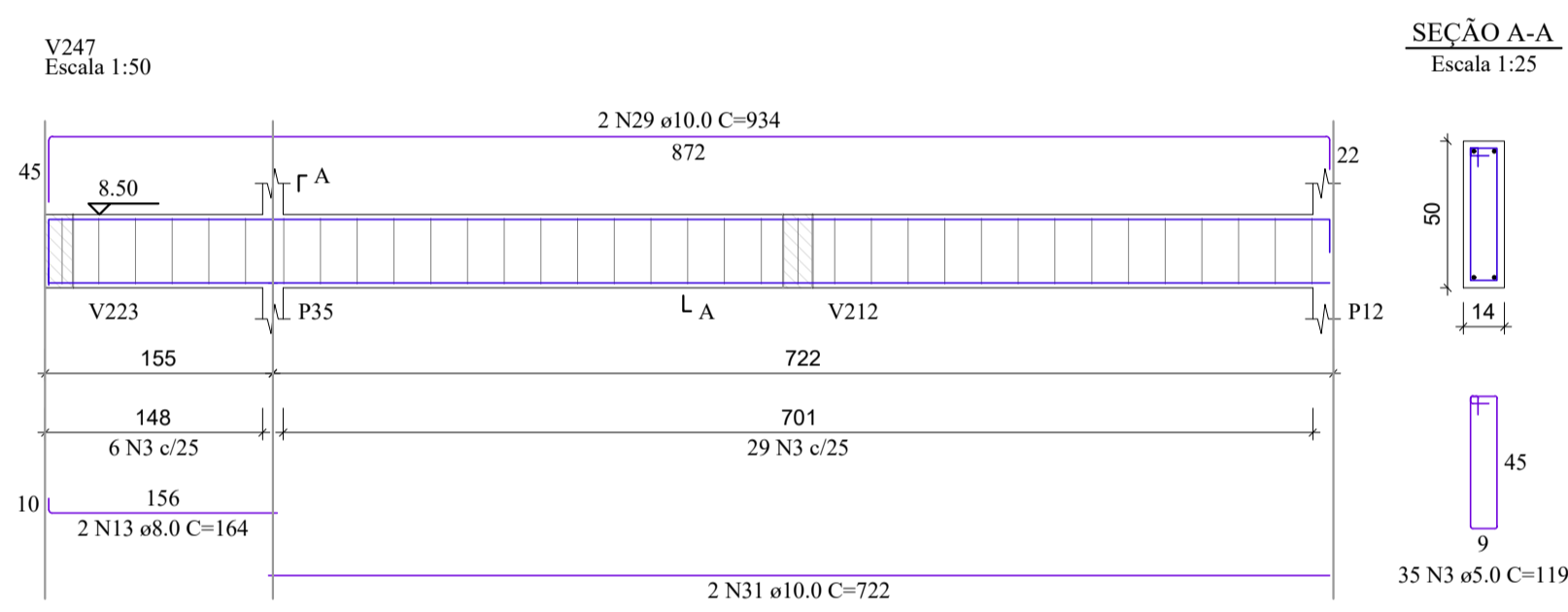
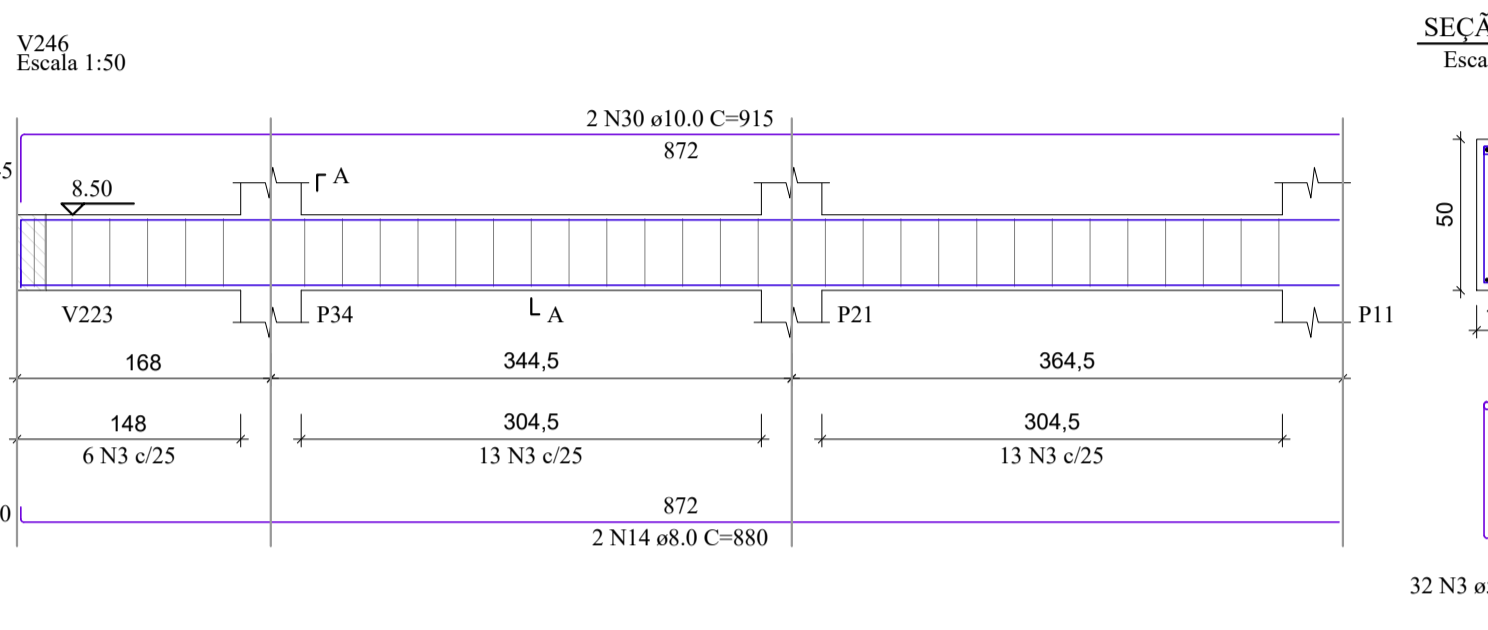
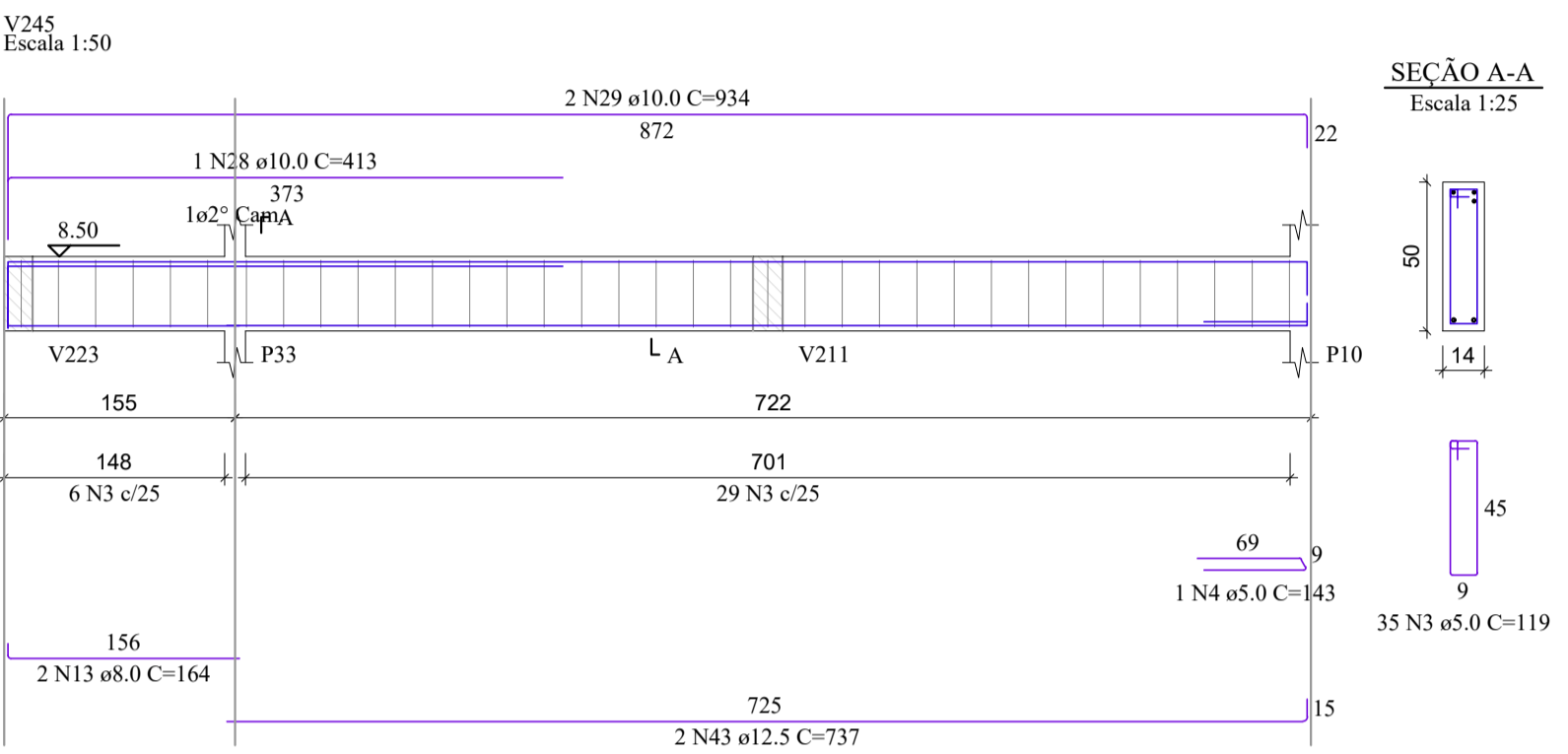
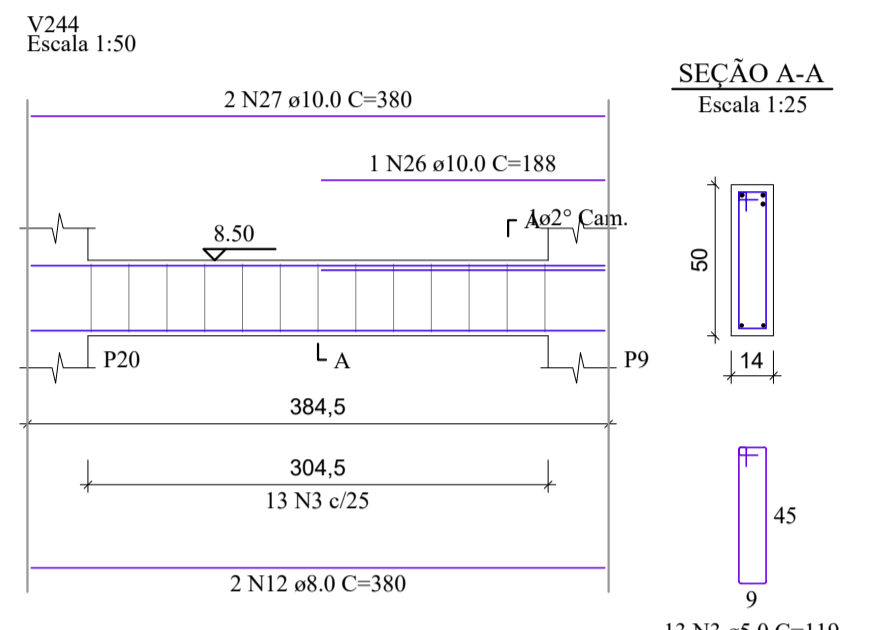


RELAÇÃO DO AÇO

CAO	N	DIAM (mm)	QUANT	C.UNIT (cm)	C.TOTAL (cm)
CA60	1	5.0	126	109	13734
	2	5.0	52	129	6708
	3	5.0	218	119	25942
	4	5.0	2	143	286
	5	5.0	32	99	3168
	6	5.0	23	150	3450
	7	5.0	9	105	945
	8	8.0	8	387	3096
	9	8.0	2	193	386
	10	8.0	2	236	472
	11	8.0	2	366	732
	12	8.0	2	380	760
	13	8.0	6	164	984
	14	8.0	4	880	3520
	15	8.0	3	191	573
	16	8.0	2	719	1438
	17	8.0	3	897	2691
	18	8.0	24	168	4032
	19	8.0	4	214	856
	20	8.0	4	216	864
	21	8.0	3	159	477
	22	10.0	2	425	850
	23	10.0	3	690	2070
	24	10.0	2	872	1744
	25	10.0	2	425	850
	26	10.0	1	188	188
	27	10.0	2	380	760
	28	10.0	2	413	826
	29	10.0	10	934	5604
	30	10.0	4	915	3660
	31	10.0	2	722	1444
	32	10.0	2	387	774
	33	10.0	2	414	828
	34	10.0	2	417	834
	35	10.0	3	219	657
	36	10.0	3	219	657
	37	10.0	3	219	657
	38	10.0	2	219	438
	39	12.5	1	502	502
	40	12.5	1	897	897
	41	12.5	4	904	3616
	42	12.5	2	366	732
	43	12.5	4	737	2948
	44	12.5	2	231	462
	45	12.5	2	229	458
	46	12.5	2	226	452



RESUMO DO AÇO

CAO	DIAM (mm)	C.TOTAL (m)	PESO + 10% (kg)
CA60	8.0	208.8	90.6
	10.0	236.2	160.2
	12.5	100.7	106.7
	5.0	542.3	92

PESO TOTAL (kg)
CA60 357.5
CA50 92

Volume de concreto (C-30) = 7.07 m³
Área de forma = 106.64 m²



REV. 03	23/04/21	INSERÇÃO DE MICTÓRIOS	DAC
REV. 02	18/03/21	ALTERAÇÃO DO ACESSO DE SERVIÇO	DAC
REV. 01	16/12/20	ALTERAÇÃO DE LAYOUT	DAC
REV. 00	27/11/20	EMISSION INICIAL	DAC
REVISÃO: DATA : DESCRIÇÃO:			RESP.:



PROJETO

GERÊNCIA DE PROJETOS
DENIS DE SOUZA SILVA CREA: MG-127.216/D

COORDENAÇÃO DE PROJETOS
ALGOSIO CAETANO FERREIRA CREA: MG-97.132/D

RESPONSÁVEL TÉCNICO
ENGR. CIVIL FLÁVIA C. BARBOSA CREA: MG-187.842/D

PROJETO:
ENGR. SC. WILLIAM BARADEL LARI

DESENHO:
ENGR. SC. WILLIAM BARADEL LARI

EMPREENDIMENTO
IMPLANTAÇÃO DA ESCOLA CIDADE JARDIM

ENDEREÇO
AVENIDA CAMILO DE BARROS LARAIA
POUSO ALEGRE - MINAS GERAIS

DISCIPLINA
ESTRUTURAL

FASE DO PROJETO
EXECUTIVO

ASSUNTO
PROJETO DE ESTRUTURA EM CONCRETO ARMADO - PRÉDIO A
DETALHAMENTO DAS ARMADURAS
VIGAS

FOLHA Nº
17/49

DATA INICIAL: 27/11/2020 | ESCALA: INDICADA | REVISÃO: R02 | ARQUIVO: DAC-PMPA-JAR-PE-EST-RO3.DWG