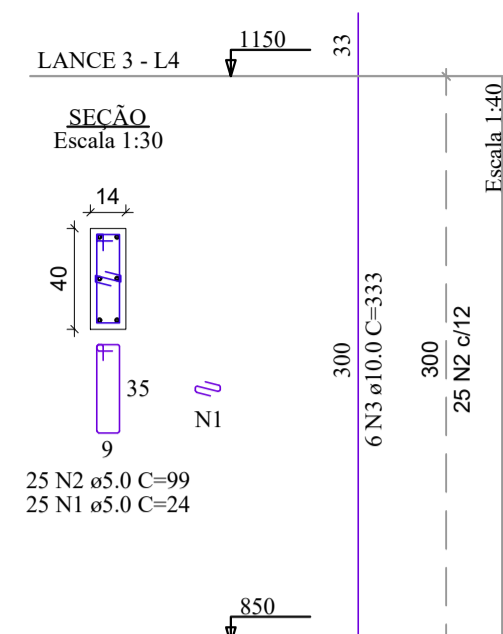


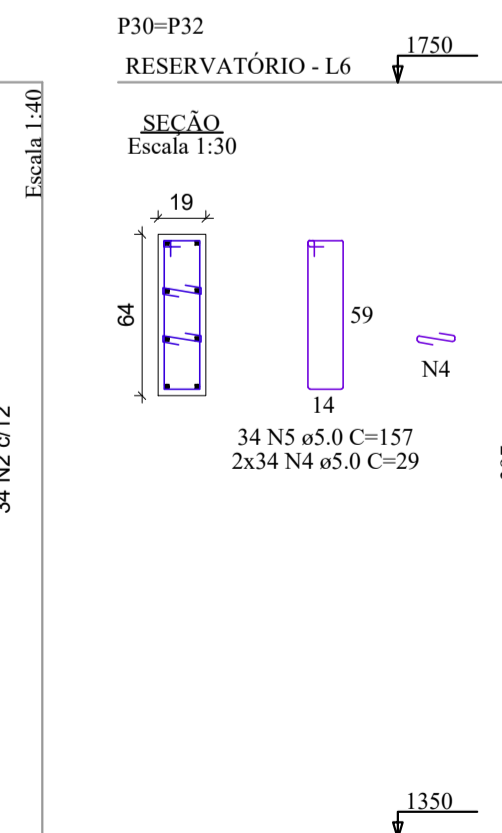
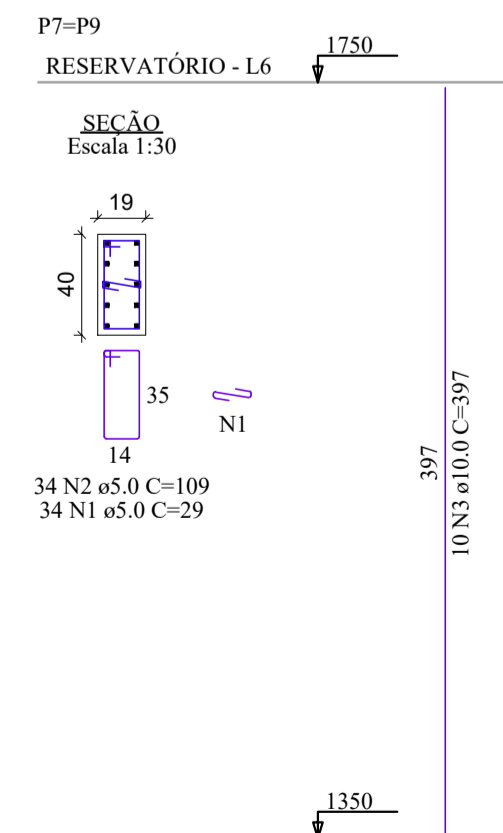
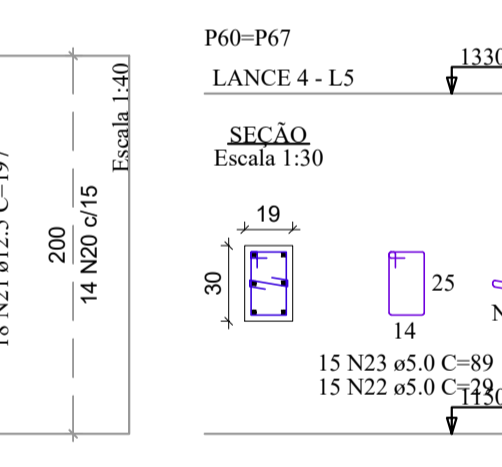
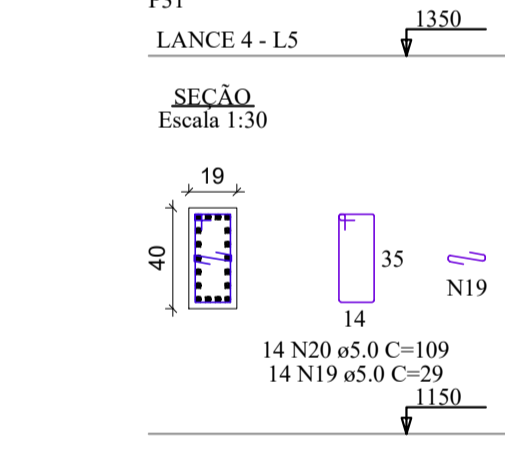
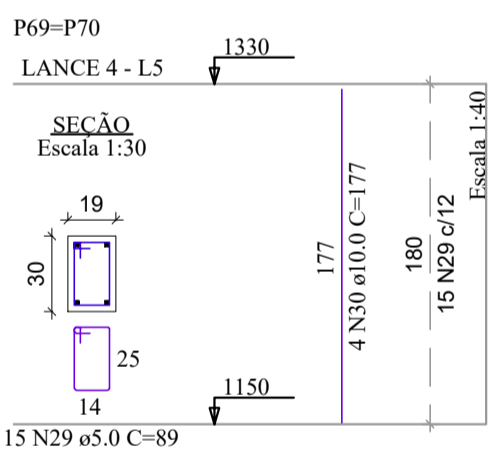
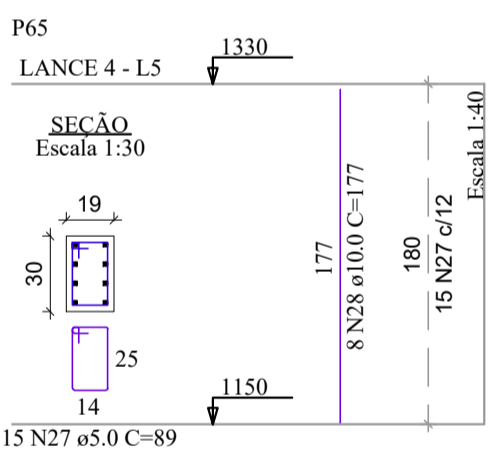
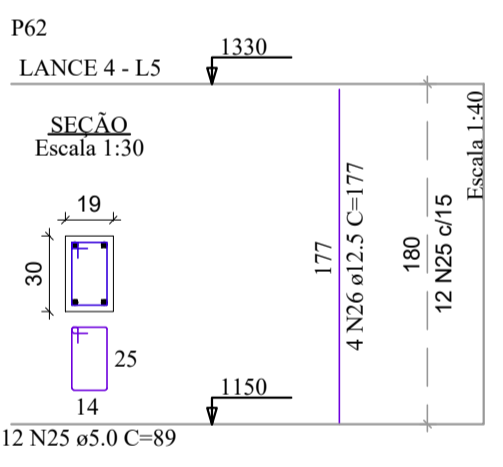
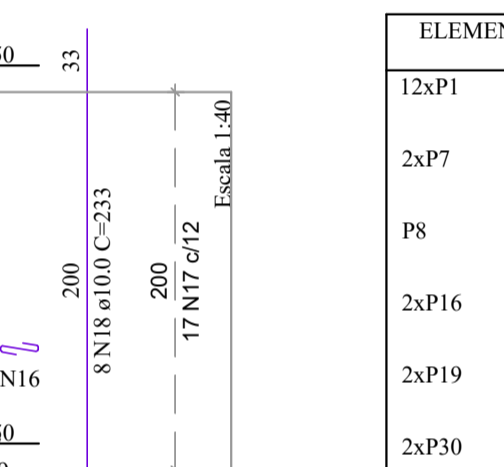
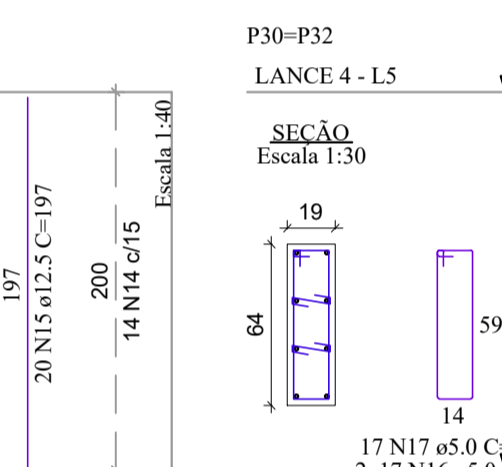
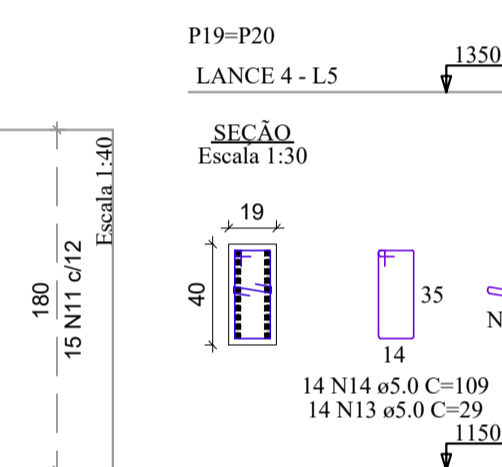
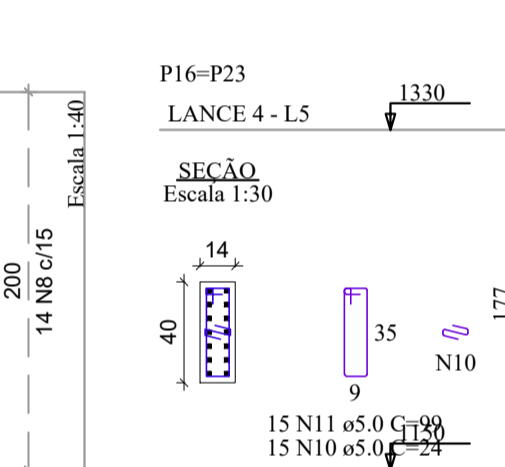
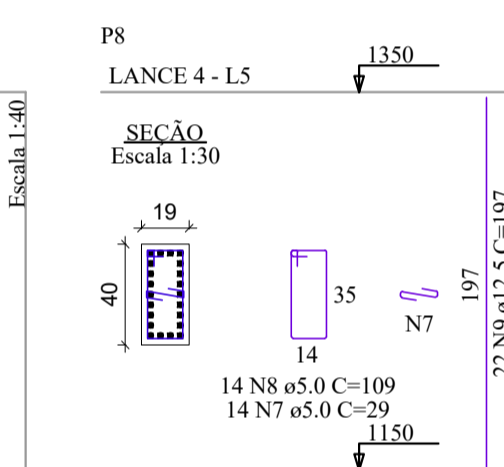
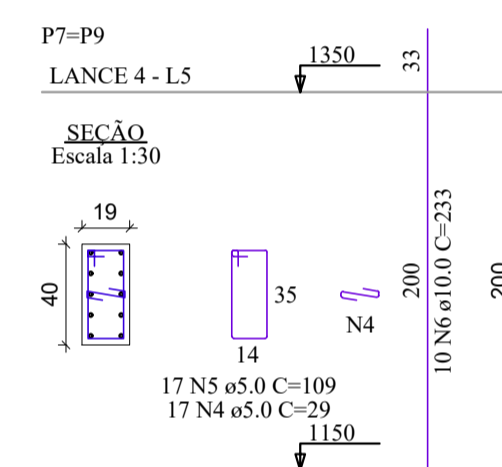
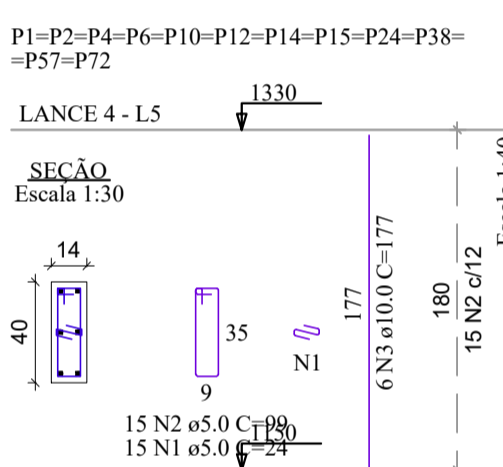
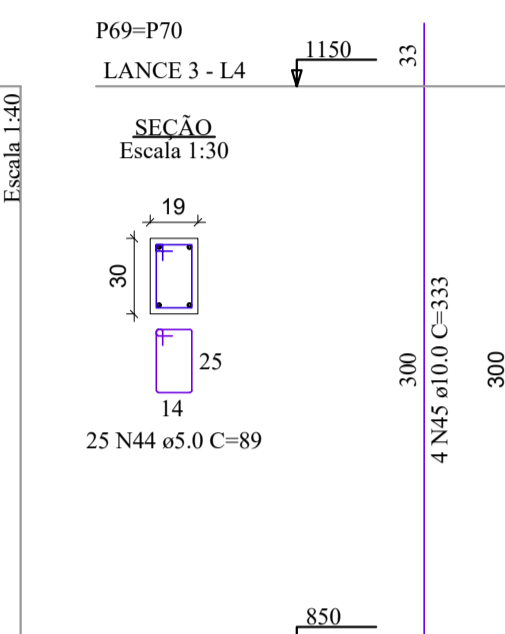
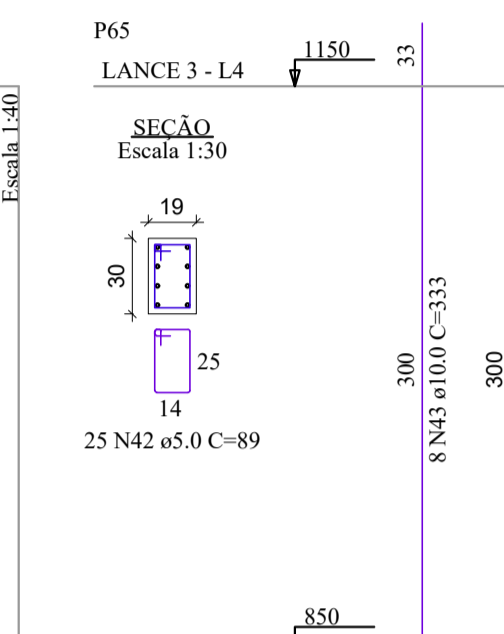
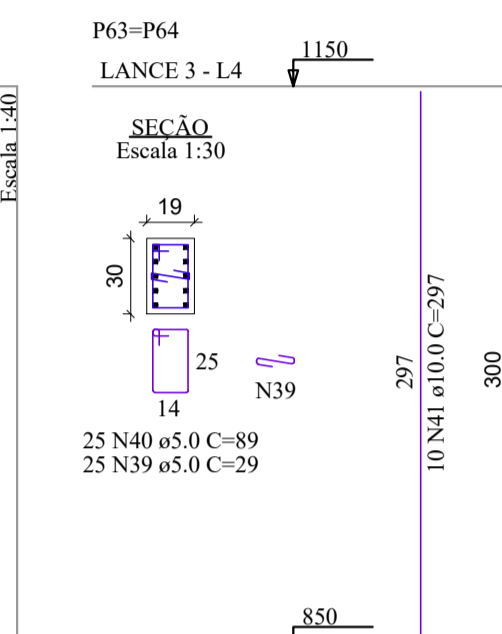
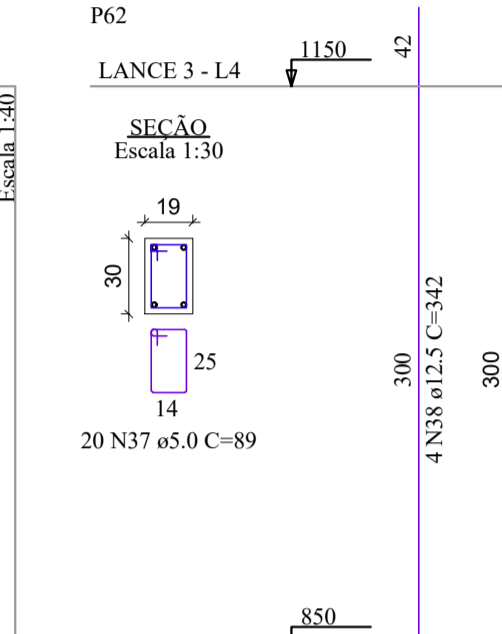
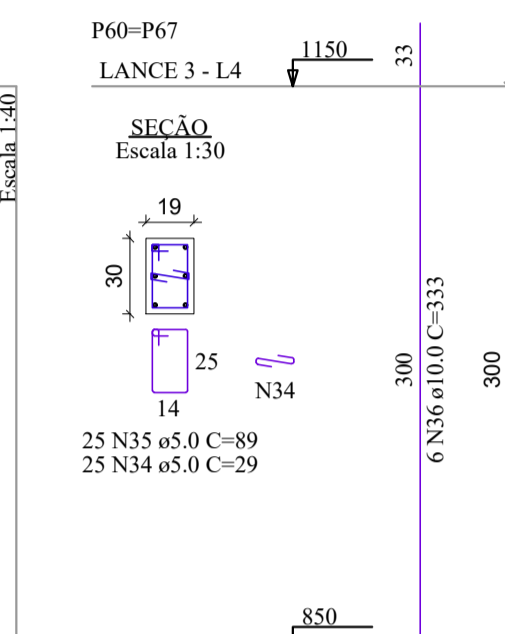
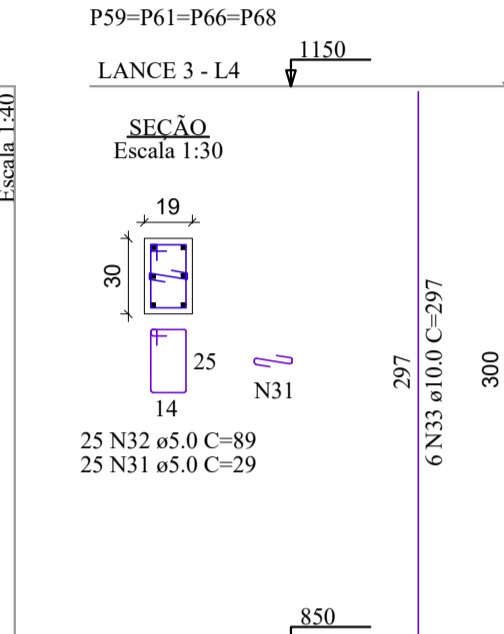
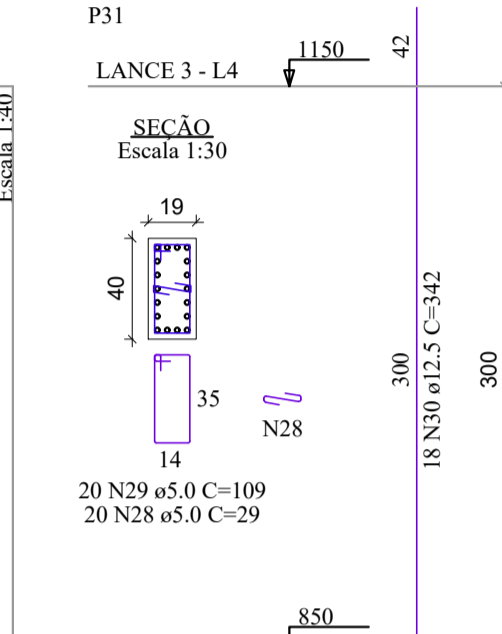
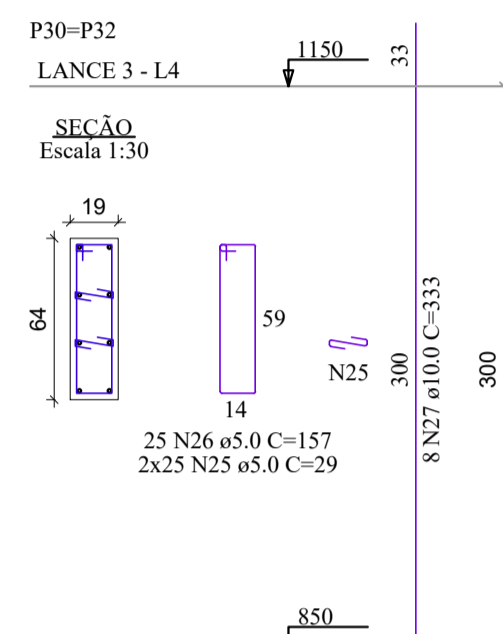
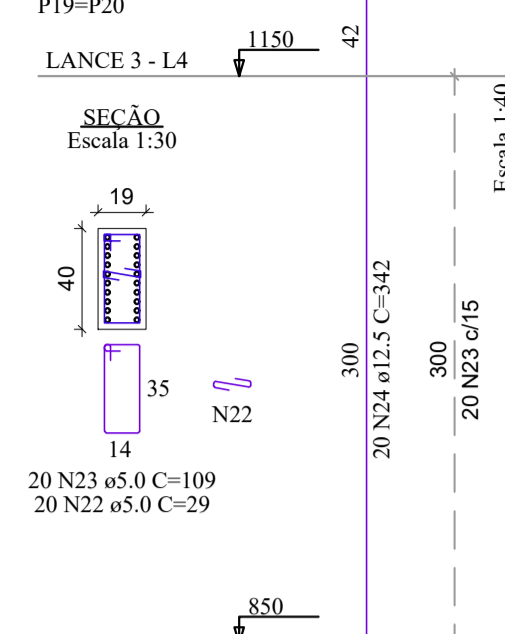
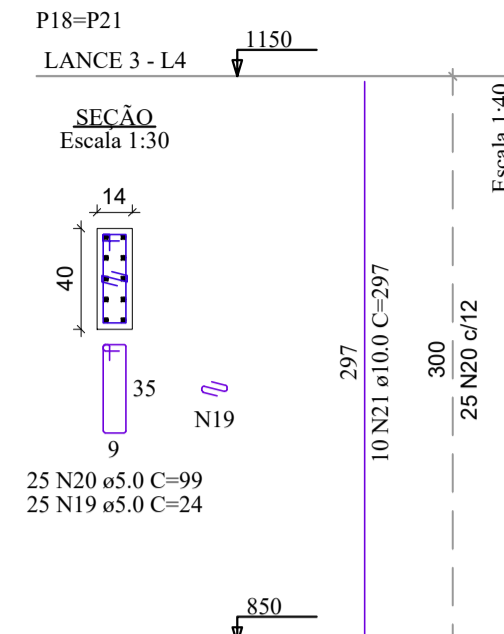
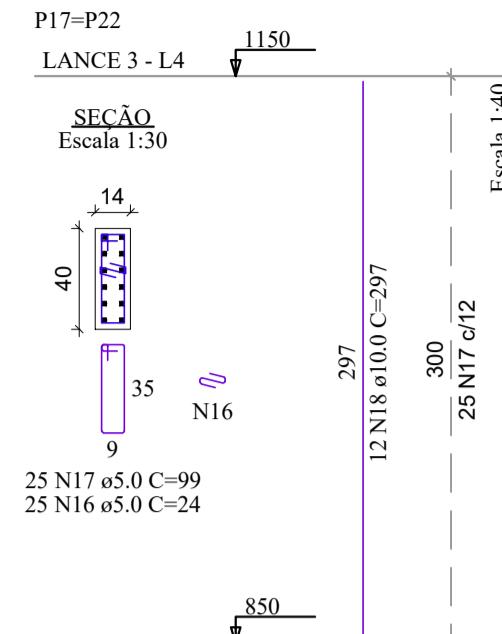
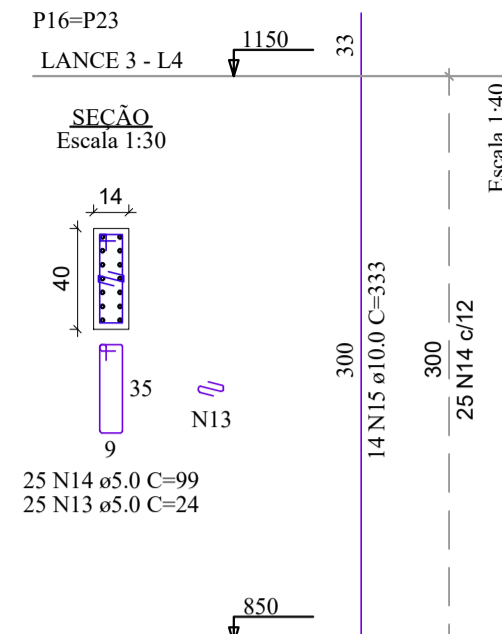
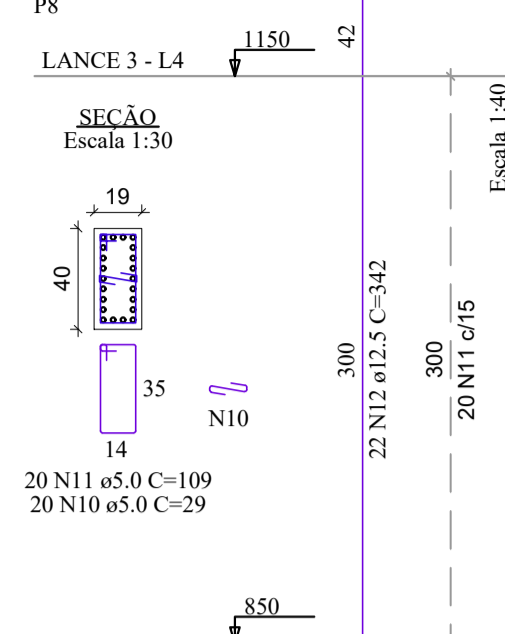
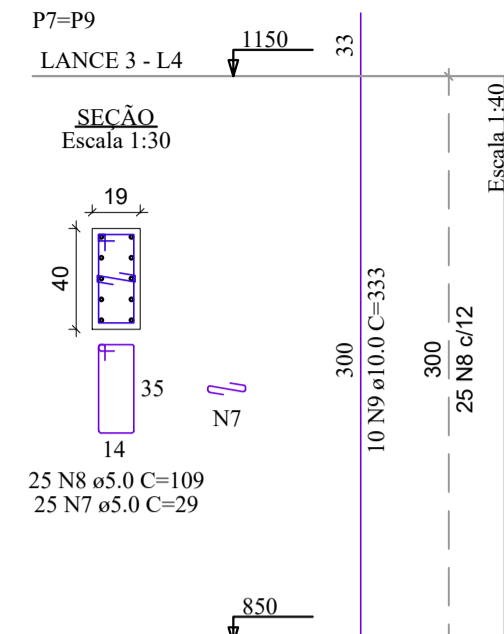
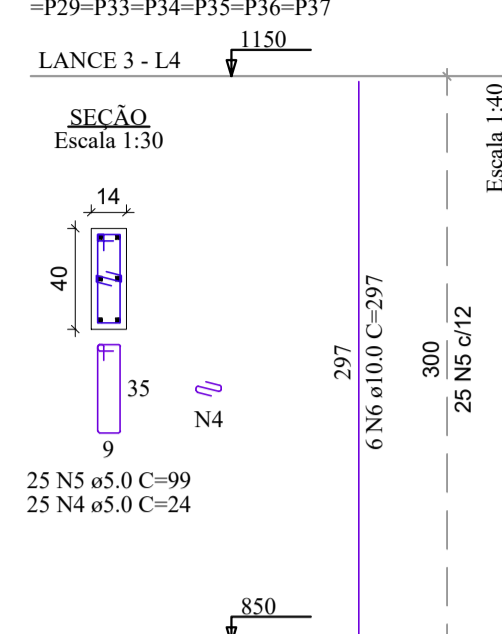
PROJETO ESTRUTURAL - ESCOLA CIDADE JARDIM

Escala Indicada

P1=P2=P4=P6=P10=P12=P14=P15=
P24=P38=P57=P72



P3=P5=P11=P13=P25=P26=P27=P28=
P29=P33=P34=P35=P36=P37



RELAÇÃO DO AÇO

ELEMENTO	AÇO	N	DIAM (mm)	QUANT	C.UNIT (cm)	C.TOTAL (cm)
2xP7	CA60	1	5.0	68	29	1972
	CA60	2	5.0	68	109	7412
	CA50	20	10.0	29	397	7940
2xP30	CA60	4	5.0	136	29	3944
	CA60	5	5.0	68	157	10676
	CA50	6	10.0	16	397	6352

RESUMO DO AÇO

AÇO	DIAM (mm)	C.TOTAL (m)	PESO + 10% (kg)
CA50	10.0	142.9	96.9
CA60	5.0	240	40.7
PESO TOTAL (kg)			
CA50			96.9
CA60			40.7

Volume de concreto (C-30) = 1.58 m³
Área de forma = 22.72 m²

RELAÇÃO DO AÇO

ELEMENTO	AÇO	N	DIAM (mm)	QUANT	C.UNIT (cm)	C.TOTAL (cm)
12xP1	CA60	1	5.0	180	24	4320
	CA60	2	5.0	180	99	17820
2xP7	CA50	2	10.0	72	177	12744
	CA60	4	5.0	34	29	986
P8	CA60	5	5.0	34	109	3706
	CA50	6	10.0	20	233	4660
2xP16	CA60	7	5.0	14	29	406
	CA60	8	5.0	14	109	1526
2xP19	CA60	9	12.5	22	197	4334
	CA50	10	5.0	30	24	720
2xP30	CA60	11	5.0	30	99	2970
	CA50	12	10.0	28	177	4956
P31	CA60	13	5.0	29	812	3052
	CA50	14	5.0	109	197	7880
2xP60	CA60	15	12.5	40	197	7880
	CA60	16	5.0	68	29	1972
P62	CA60	17	5.0	34	157	5338
	CA50	18	10.0	16	233	3728
2xP69	CA60	19	5.0	14	29	406
	CA60	20	5.0	14	109	1526
P65	CA50	21	12.5	18	197	3546
	CA60	22	5.0	30	29	870
2xP69	CA60	23	5.0	30	89	2670
	CA50	24	10.0	12	177	2124
P69=P70	CA60	25	5.0	12	89	1068
	CA50	26	12.5	4	177	708
P62	CA60	27	5.0	15	89	1335
	CA50	28	10.0	8	177	1416
2xP69	CA60	29	5.0	30	89	2670
	CA50	30	10.0	8	177	1416

RESUMO DO AÇO

AÇO	DIAM (mm)	C.TOTAL (m)	PESO + 10% (kg)
CA50	10.0	310.4	210.5
CA60	5.0	164.7	174.5
PESO TOTAL (kg)			
CA50			385
CA60			91.8

Volume de concreto (C-30) = 3.43 m³
Área de forma = 58.60 m²

RELAÇÃO DO AÇO

ELEMENTO	AÇO	N	DIAM (mm)	QUANT	C.UNIT (cm)	C.TOTAL (cm)
12xP1	CA60	1	5.0	300	24	7200
	CA60	2	5.0	300	99	29700
14xP3	CA50	3	10.0	72	333	23976
	CA60	4	5.0	350	24	8400
2xP7	CA60	5	5.0	350	99	34650
	CA50	6	10.0	84	297	24948
P8	CA60	7	5.0	50	29	1450
	CA60	8	5.0	50	109	5450
2xP16	CA60	9	10.0	50	24	1200
	CA60	10	5.0	20	29	580
2xP17	CA60	11	5.0	20	109	2180
	CA50	12	12.5	22	342	7524
2xP18	CA60	13	5.0	50	24	1200
	CA60	14	5.0	50	99	4950
2xP19	CA50	15	10.0	28	333	9324
	CA60	16	5.0	50	24	1200
2xP30	CA60	17	5.0	50	99	4950
	CA50	18	10.0	24	297	7128
P31	CA60	19	5.0	50	24	1200
	CA60	20	5.0	50	99	4950
4xP59	CA50	21	10.0	20	297	5940
	CA60	22	5.0	40	29	1160
2xP60	CA60	23	5.0	40	109	4360
	CA50	24	12.5	40	342	13680
P62	CA60	25	5.0	100	29	2900
	CA60	26	5.0	50	157	7850
2xP69	CA50	27	10.0	16	333	5328
	CA60	28	5.0	20	29	580
P65	CA60	29	5.0	20	109	2180
	CA50	30	12.5	18	342	6156
2xP69	CA60	31	5.0	100	29	2900
	CA60	32	5.0	100	89	8900
2xP60	CA60	33	10.0	24	297	7128
	CA60	34	5.0	50	29	1450
P62	CA60	35	5.0	50	89	4450
	CA60	36	10.0	12	333	3996
2xP63	CA60	37	5.0	20	89	1780
	CA50	38	12.5	4	342	1368
P65	CA60	39	5.0	50	29	1450
	CA60	40	5.0	40	89	4450
2xP69	CA50	41	10.0	20	297	5940
	CA60	42	5.0	25	89	2225
2xP69	CA50	43	10.0	8	333	2664
	CA60	44	5.0	50	89	4450
2xP69	CA50	45	10.0	8	333	2664
	CA50	46	10.0	8	333	2664

RESUMO DO AÇO

AÇO	DIAM (mm)	C.TOTAL (m)	PESO + 10% (kg)
CA50	10.0	1057	716.8
CA60	5.0	1591.5	269.8
PESO TOTAL (kg)			
CA50			1021.2
CA60			269.8

Volume de concreto (C-30) = 9.53 m³
Área de forma = 170.16 m²

REV. 03	23/04/21	INSERÇÃO DE MICTÓRIOS	DAC
REV. 02	18/03/21	ALTERAÇÃO DO ACESSO DE SERVIÇO	DAC
REV. 01	16/12/20	ALTERAÇÃO DE LAYOUT	DAC
REV. 00	27/11/20	EMIÇÃO INICIAL	DAC
REVISÃO: DATA : DESCRIÇÃO:			RESP.:

Prefeitura Municipal de Pouso Alegre

<p>DAC Engenharia</p> <p>Rua Miguel Vianna, nº 81, Sala 12 Bairro Morro Chic CEP: 37500-080 - Itajubá / MG Tel: (35) 3623-5720 www.dacengenharia.com.br</p>	GERÊNCIA DE PROJETOS DENIS DE SOUZA SILVA CREA: MG-127.216/D
	COORDENAÇÃO DE PROJETOS ALOSIO CAETANO FERREIRA CREA: MG-97.132/D
RESPONSÁVEL TÉCNICO ENG. CIVIL FLÁVIA C. BARBOSA CREA: MG-187.842/D	
PROJETO ENG. SC. WILLIAM BARADEL LARI	
DESENHO ENG. SC. WILLIAM BARADEL LARI	

IMPLANTAÇÃO DA ESCOLA CIDADE JARDIM

ENDEREÇO AVENIDA CAMILO DE BARROS LARIAIA POUSO ALEGRE - MINAS GERAIS	DISCIPLINA ESTRUTURAL
ASSUNTO PROJETO DE ESTRUTURA EM CONCRETO ARMADO - PRÉDIO A DETALHAMENTO DAS ARMADURAS PILARES	FASE DO PROJETO EXECUTIVO
DATA INICIAL 27/11/2020	ESCALA INDICADA
REVISÃO R02	ARQUIVO DAC-PMPA-JAR-PE-EST-R03.DWG
FOLHA Nº 10/49	