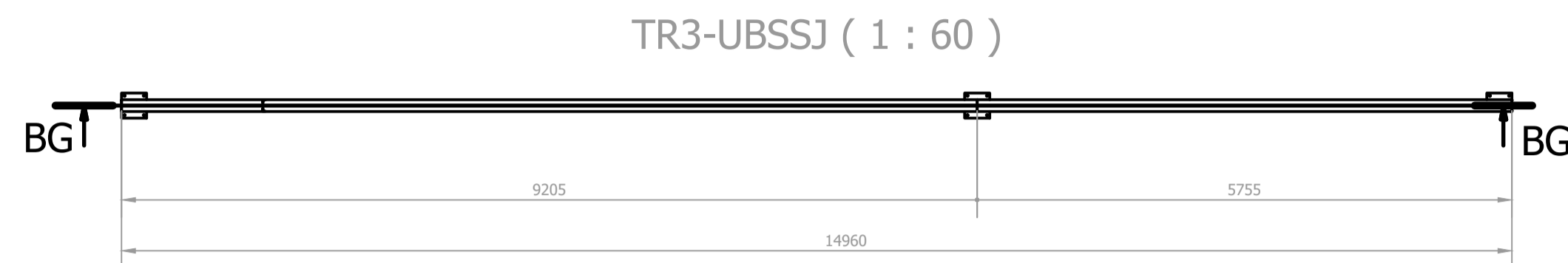
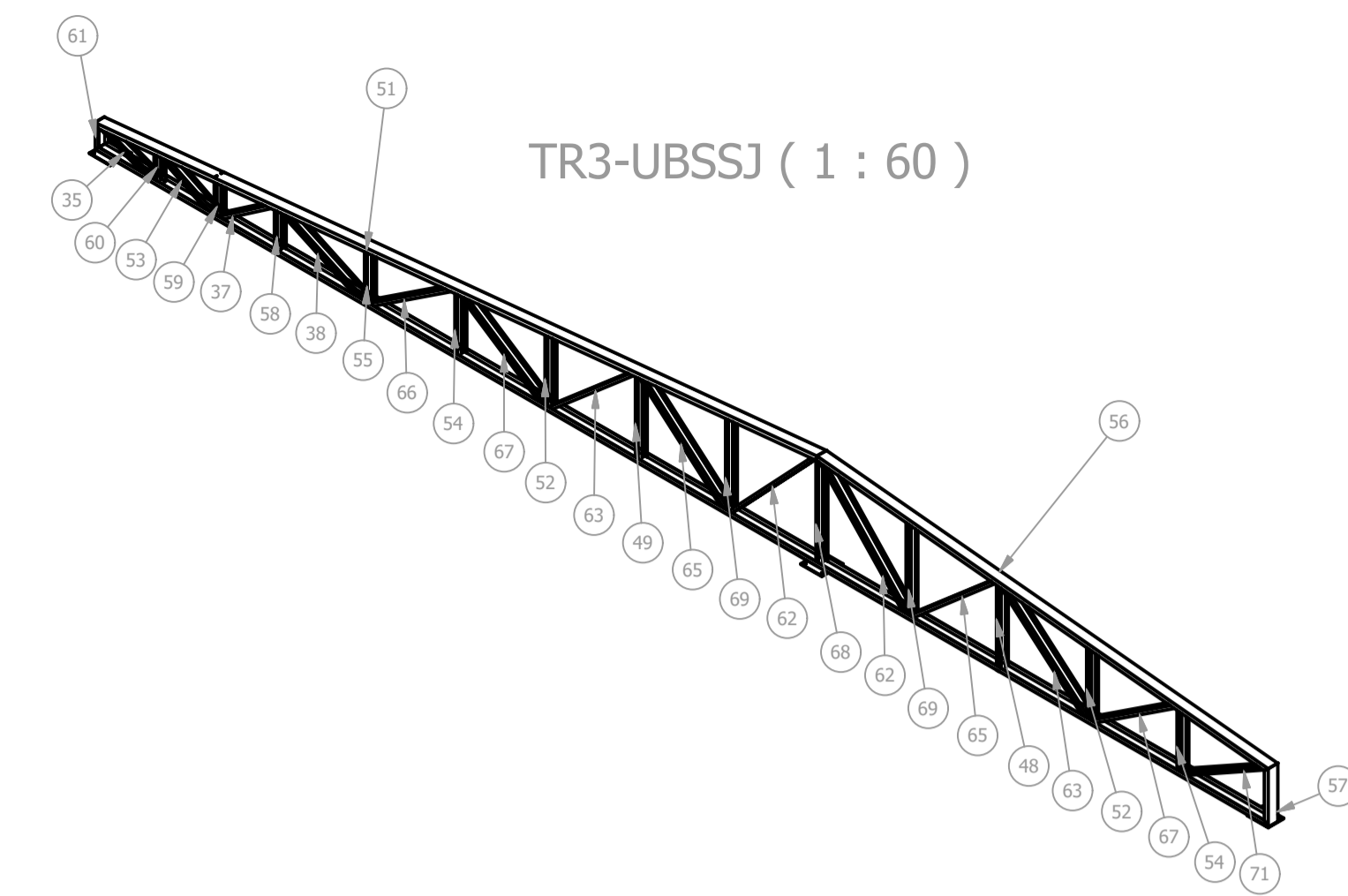
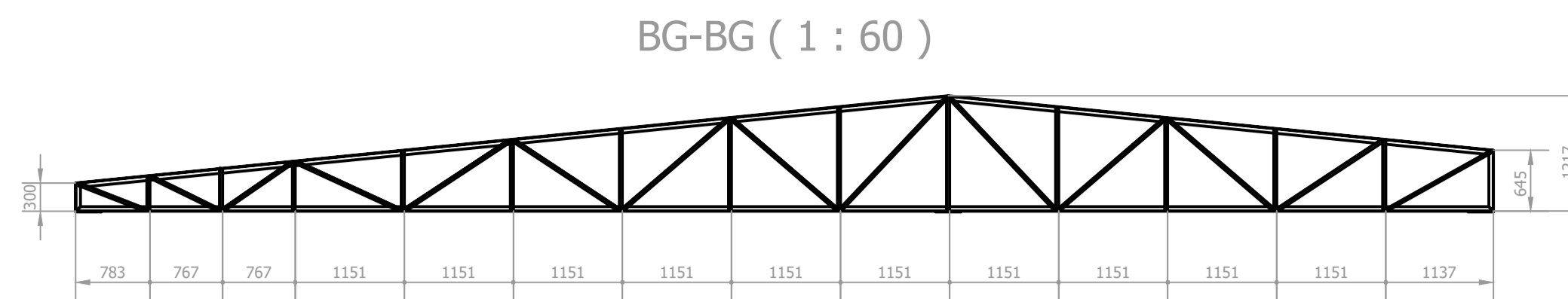
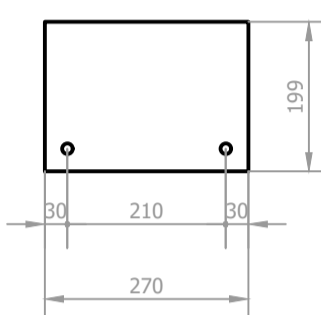


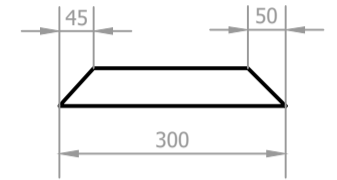
LISTA DE QUANTIDADES						
ID	ITEM	QTD	DESCRIÇÃO	COMPRI.	MATERIAL	PESO UN.
2	U5	1	3X127X50	14960,000 mm	ASTM A36	76,2 kg
17	L5	1	L 1.1_4 x 1_8	925,504 mm	ASTM A36	1,4 kg
19	L7	1	L 1.1_4 x 1_8	852,233 mm	ASTM A36	1,3 kg
35	L9	1	L 1.1_4 x 1_8	804,001 mm	ASTM A36	1,2 kg
37	L3	1	L 1.1_4 x 1_8	963,694 mm	ASTM A36	1,4 kg
38	L21	1	L 1.1_4 x 1_8	1272,288 mm	ASTM A36	1,9 kg
47	L22	1	L 1.1_4 x 1_8	1236,185 mm	ASTM A36	1,9 kg
48	L1	2	L 1.1_4 x 1_8	988,948 mm	ASTM A36	1,6 kg
49	L2	2	L 1.1_4 x 1_8	985,948 mm	ASTM A36	1,5 kg
51	U1	1	3X127X50	9250,911 mm	ASTM A36	47,2 kg
52	L6	4	L 1.1_4 x 1_8	870,885 mm	ASTM A36	1,4 kg
53	L8	2	L 1.1_4 x 1_8	*Varia*	ASTM A36	1,3 kg
54	L10	4	L 1.1_4 x 1_8	755,823 mm	ASTM A36	1,2 kg
55	L11	2	L 1.1_4 x 1_8	640,760 mm	ASTM A36	1,0 kg
56	U2	1	3X127X50	5783,703 mm	ASTM A36	29,5 kg
57	U3	1	3X127X50	645,000 mm	ASTM A36	3,2 kg
58	L12	2	L 1.1_4 x 1_8	525,698 mm	ASTM A36	0,8 kg
59	L13	2	L 1.1_4 x 1_8	450,417 mm	ASTM A36	0,7 kg
60	L14	2	L 1.1_4 x 1_8	372,281 mm	ASTM A36	0,6 kg
61	U4	1	3X127X50	300,000 mm	ASTM A36	1,4 kg
62	L15	4	L 1.1_4 x 1_8	*Varia*	ASTM A36	2,6 kg
63	L16	2	L 1.1_4 x 1_8	*Varia*	ASTM A36	2,4 kg
64	L17	2	L 1.1_4 x 1_8	*Varia*	ASTM A36	2,4 kg
65	L18	4	L 1.1_4 x 1_8	1491,198 mm	ASTM A36	2,3 kg
66	L19	4	L 1.1_4 x 1_8	*Varia*	ASTM A36	*Varia*
67	L20	4	L 1.1_4 x 1_8	*Varia*	ASTM A36	2,1 kg
68	L23	2	L 1.1_4 x 1_8	1214,485 mm	ASTM A36	1,9 kg
69	L24	4	L 1.1_4 x 1_8	1101,010 mm	ASTM A36	1,7 kg
70	CH	2	6,35 x 270 x 270		ASTM A36	3,6 kg
71	AISC - L 1 1/4 x 1 1/4 x 1/8 - 0,001	1	Cantoneira de aço	51,238 pol	Aço ASTM A36	1,6 kg
72	CH2	1	1 x 1 x 1		Aço ASTM A36	2,7 kg
73	L25	1	L 1 1/4 x 1 1/4 x 1/8	51,238 pol	Aço ASTM A36	1,6 kg



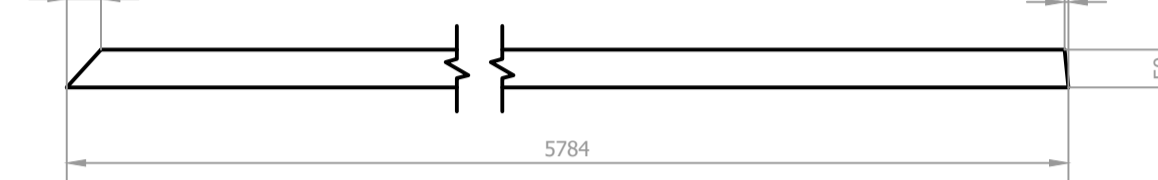
CH2 (1 : 10)



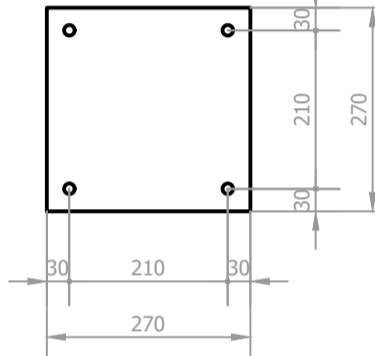
U4 (1 : 10)



U2 (1 : 10)



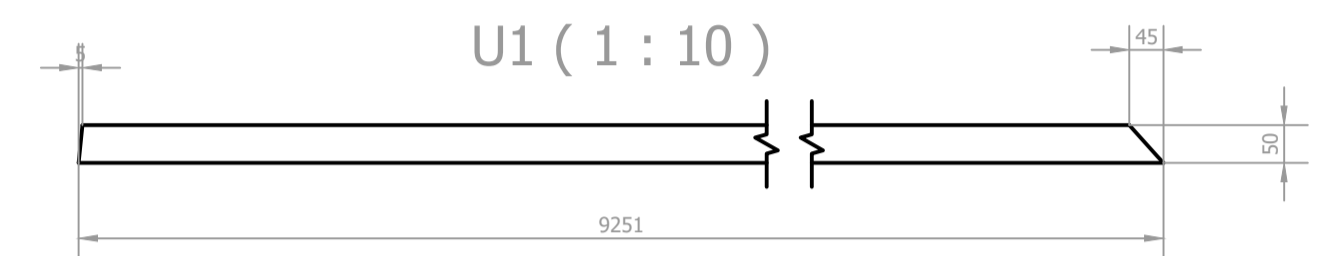
CH (1 : 10)



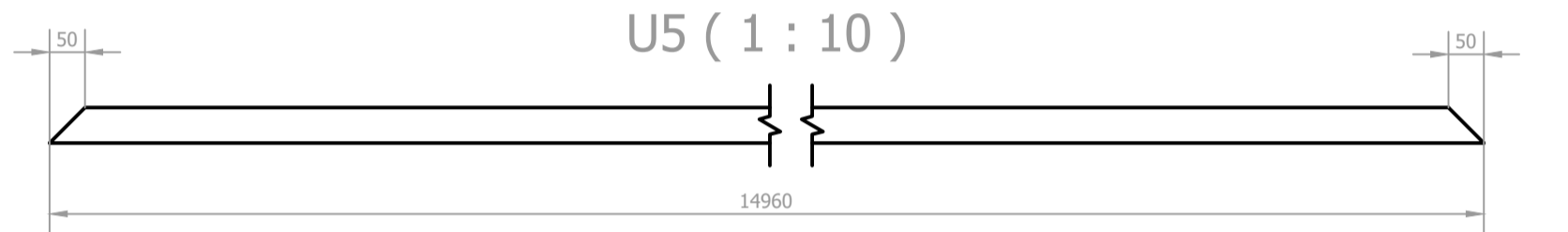
U3 (1 : 10)



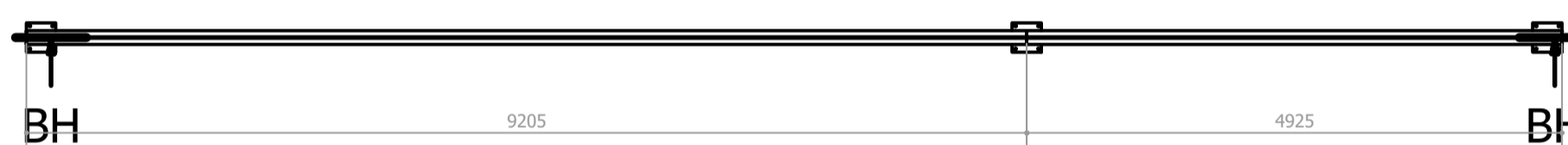
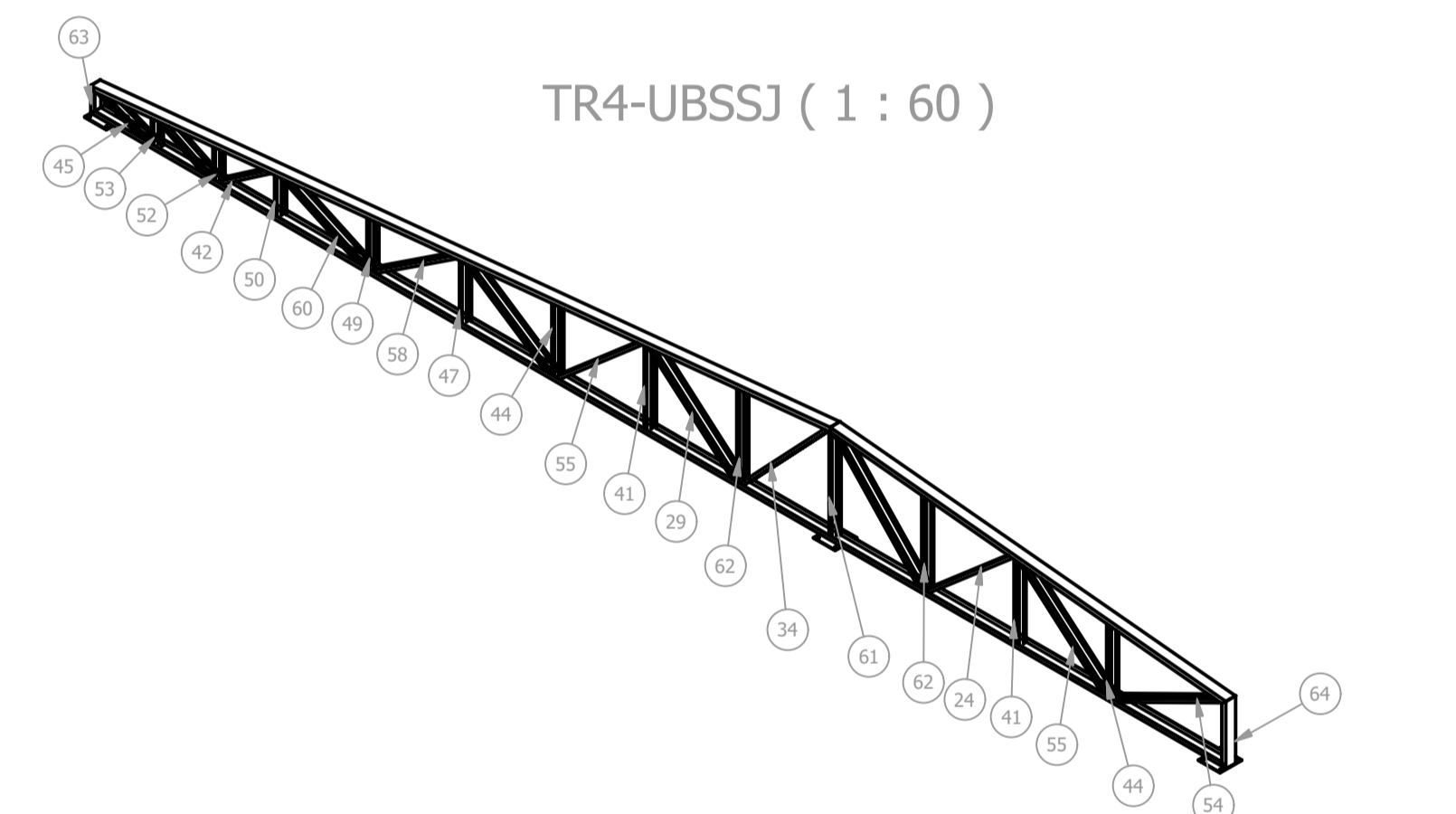
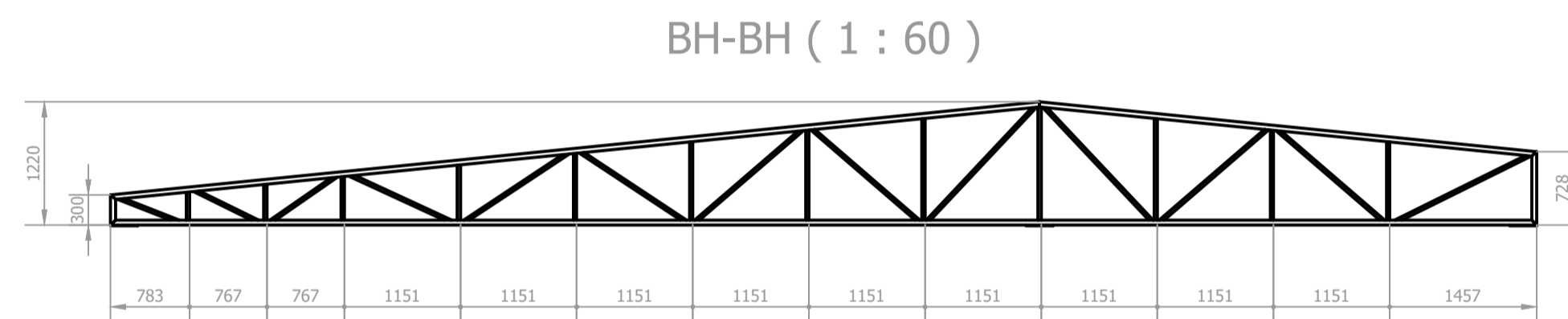
U1 (1 : 10)



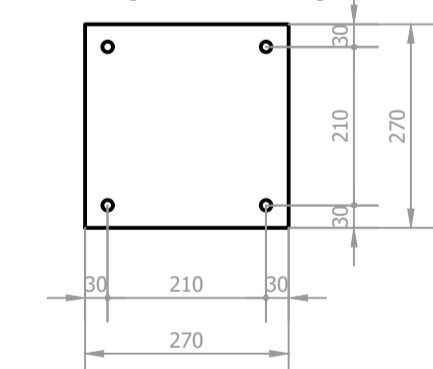
U5 (1 : 10)



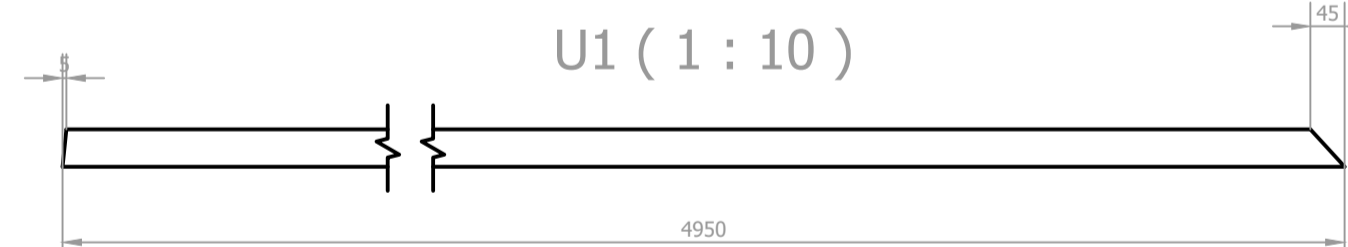
LISTA DE QUANTIDADES						
ID	ITEM	QTD	DESCRIÇÃO	COMPRI.	MATERIAL	PESO UN.
2	U4	1	3X127X50	14130,000 mm	ASTM A36	72,0 kg
24	L16	1	L 1.1_4 x 1_8	1519,032 mm	ASTM A36	2,4 kg
25	L12	1	L 1.1_4 x 1_8	1673,971 mm	ASTM A36	2,6 kg
29	L20	1	L 1.1_4 x 1_8	1491,198 mm	ASTM A36	2,3 kg
32	L13	1	L 1.1_4 x 1_8	1669,641 mm	ASTM A36	2,6 kg
34	L14	1	L 1.1_4 x 1_8	1650,055 mm	ASTM A36	2,6 kg
40	L11	1	L 1.1_4 x 1_8	1669,653 mm	ASTM A36	2,6 kg
41	L1	4	L 1.1_4 x 1_8	985,948 mm	ASTM A36	1,5 kg
42	L2	2	L 1.1_4 x 1_8	925,504 mm	ASTM A36	1,4 kg
43	U1	1	3X127X50	4949,564 mm	ASTM A36	25,2 kg
44	L3	4	L 1.1_4 x 1_8	870,885 mm	ASTM A36	1,4 kg
45	L4	2	L 1.1_4 x 1_8	852,233 mm	ASTM A36	1,3 kg
46	L5	2	L 1.1_4 x 1_8	824,141 mm	ASTM A36	1,3 kg
47	L6	2	L 1.1_4 x 1_8	755,823 mm	ASTM A36	1,2 kg
48	U2	1	3X127X50	9250,911 mm	ASTM A36	47,2 kg
49	L7	2	L 1.1_4 x 1_8	640,760 mm	ASTM A36	1,0 kg
50	L8	2	L 1.1_4 x 1_8	525,698 mm	ASTM A36	0,8 kg
52	L9	2	L 1.1_4 x 1_8	448,989 mm	ASTM A36	0,7 kg
53	L10	2	L 1.1_4 x 1_8	372,281 mm	ASTM A36	0,6 kg
54	L15	2	L 1.1_4 x 1_8	1623,739 mm	ASTM A36	2,5 kg
55	L17	4	L 1.1_4 x 1_8	1510,781 mm	ASTM A36	2,4 kg
56	L18	1	L 1.1_4 x 1_8	1491,198 mm	ASTM A36	2,3 kg
57	L19	1	L 1.1_4 x 1_8	1491,198 mm	ASTM A36	2,3 kg
58	L21	2	L 1.1_4 x 1_8	1372,256 mm	ASTM A36	2,1 kg
59	L22	2	L 1.1_4 x 1_8	1350,170 mm	ASTM A36	2,1 kg
60	L23	2	L 1.1_4 x 1_8	1236,185 mm	ASTM A36	1,9 kg
61	L24	2	L 1.1_4 x 1_8	1214,485 mm	ASTM A36	1,9 kg
62	L25	4	L 1.1_4 x 1_8	1101,010 mm	ASTM A36	1,7 kg
63	U3	1	3X127X50	300,000 mm	ASTM A36	1,4 kg
64	U5	1	3X127X50	728,000 mm	ASTM A36	3,6 kg
65	CH	3	6,35 x 270 x 270		ASTM A36	3,6 kg



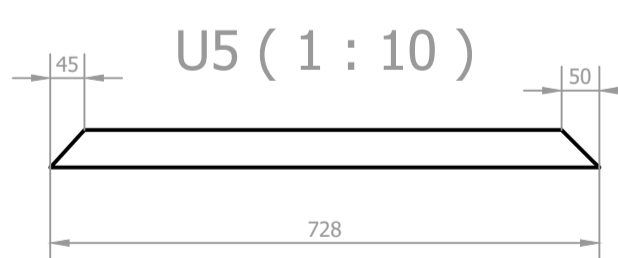
CH (1 : 10)



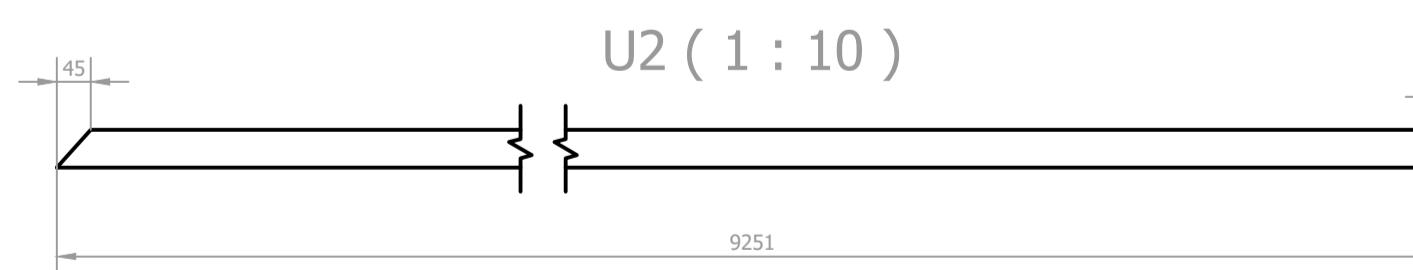
U1 (1 : 10)



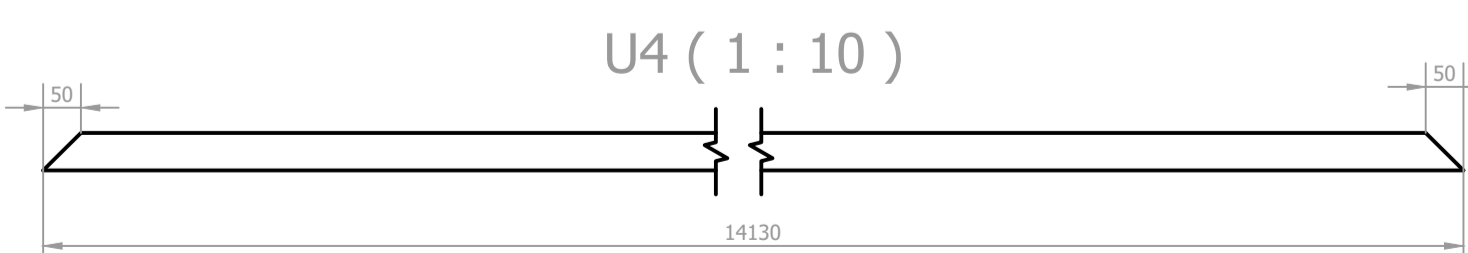
U5 (1 : 10)



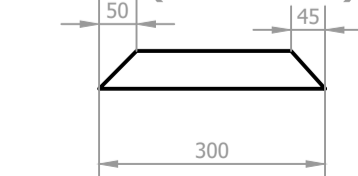
U2 (1 : 10)



U4 (1 : 10)



U3 (1 : 10)



REV. 00 b5/10/20q EMISSÃO INICIAL		DAC
REVISÃO DATA : DESCRIÇÃO:		RESP.:
 <p>Prefeitura Municipal de Pouso Alegre</p>		
 <p>DAC Engenharia</p> <p>Rua Miguel Vianna, nº 81, Sala 12 Bairro Morro Chic CEP: 37500-080 - Itajubá / MG Tel: (35) 3623-5720 www.dacengenharia.com.br</p>	<p>GERÊNCIA DE PROJETOS PEDRO HENRIQUE JUSTINIANO ENG. CIVIL</p> <p>COORDENAÇÃO DE PROJETOS DENIS DE SOUZA SILVA MG-127,216/D RESPONSÁVEL TÉCNICO</p> <p>ENCº FLÁMIA CRISTINA BARBOSA MG-187,847/D</p> <p>PROJETO ENG. MECÂNICO GERMAN LOZANO</p> <p>DESENHO JÚLIO DEL DUCCA</p>	
<p>EMPRESAMENTO REFORMA DA COBERTURA DA ESF SÃO JOÃO</p>		
<p>ENDEREÇO AV. ALVARINO GONÇALVES NEGRÃO, SÃO JOÃO POUSO ALEGRE - MG</p>		<p>DISCIPLINA METÁLICA</p>
<p>ASSUNTO PROJETO DA COB. METÁLICA - ESF SÃO JOÃO DETALHAMENTO E QUANTITATIVO</p>		<p>FASE DO PROJETO EXECUTIVO</p>
<p>DATA INICIAL 05/10/2021</p>		<p>FOLHA Nº. 4/6</p>
<p>ESCALA INDICADA</p>	<p>REVISÃO R00</p>	<p>ARQUIVO DAC-PMPA-ESJ-PE-MET-R00.dwg</p>