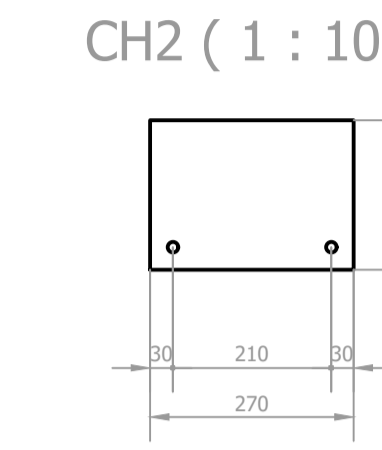
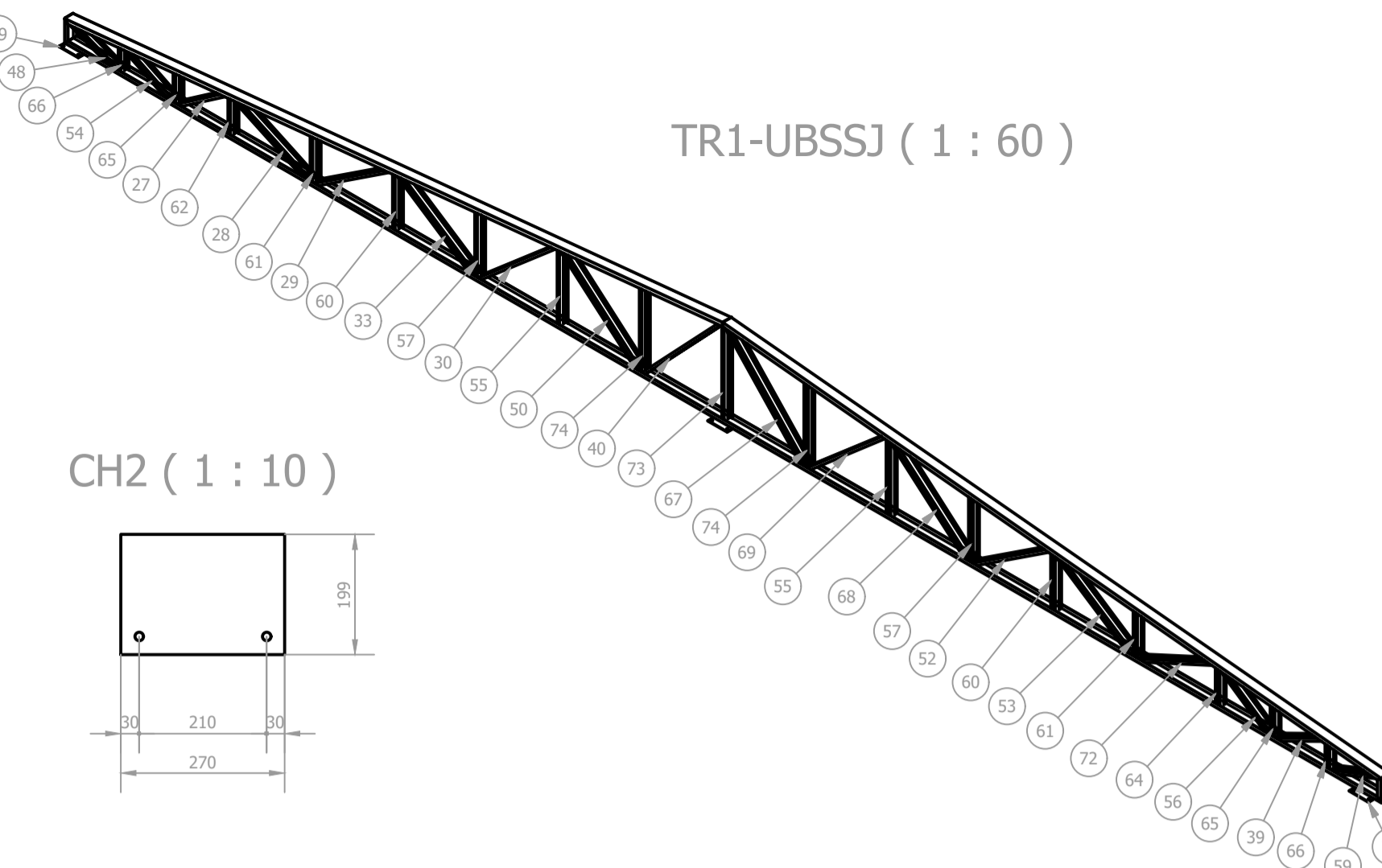
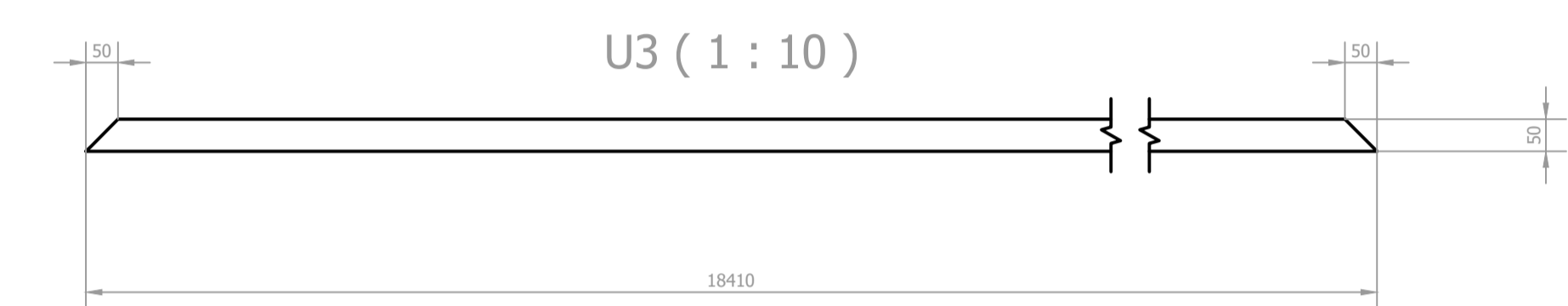
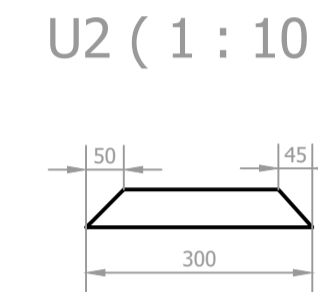
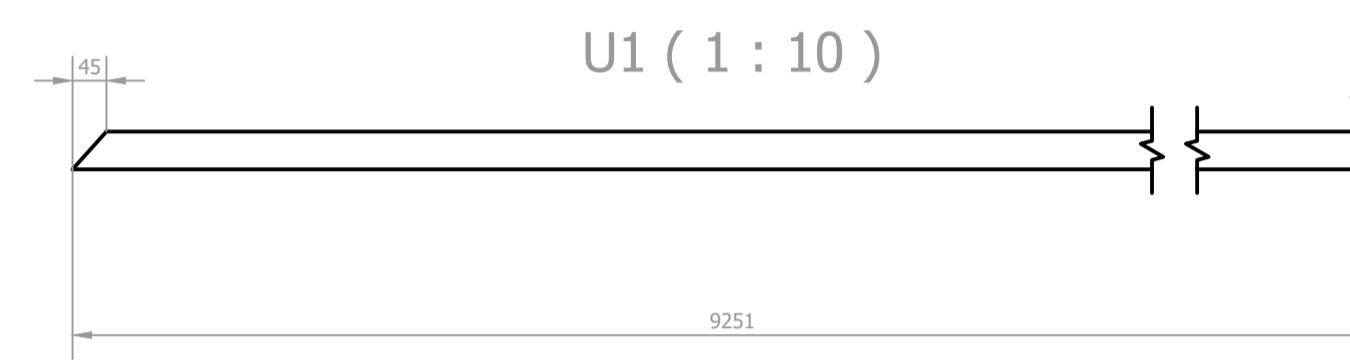
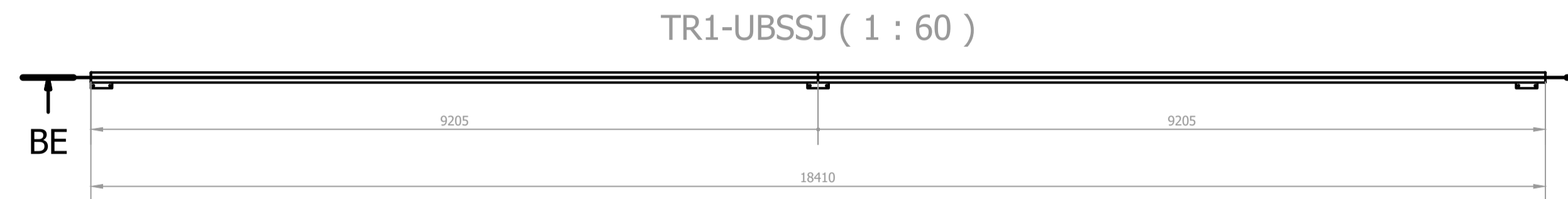
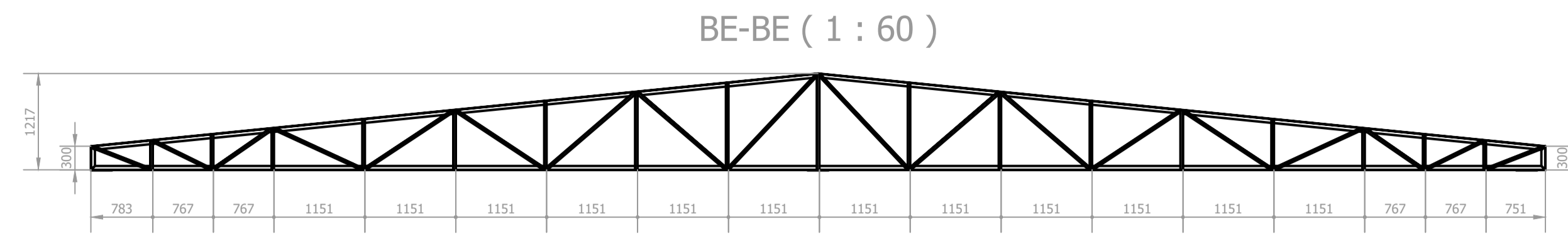
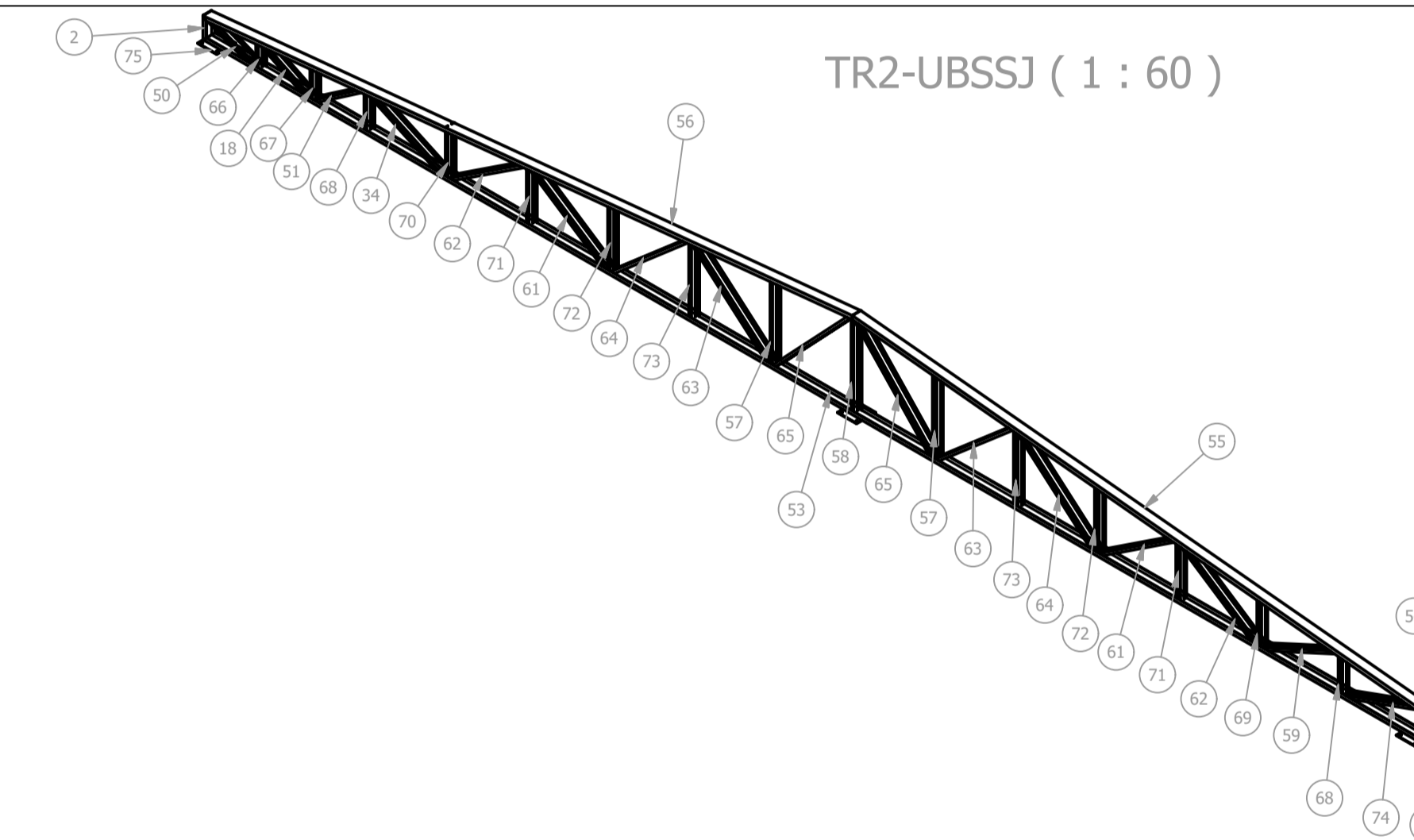
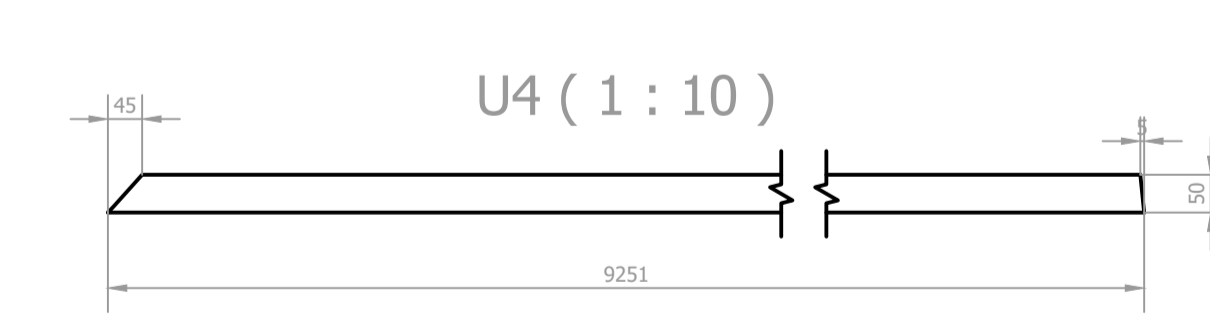
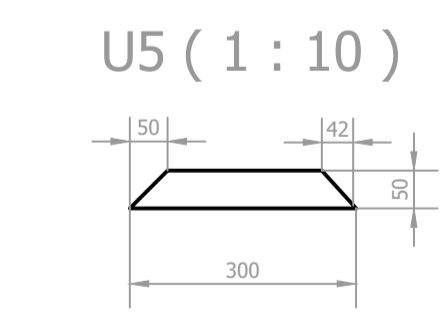
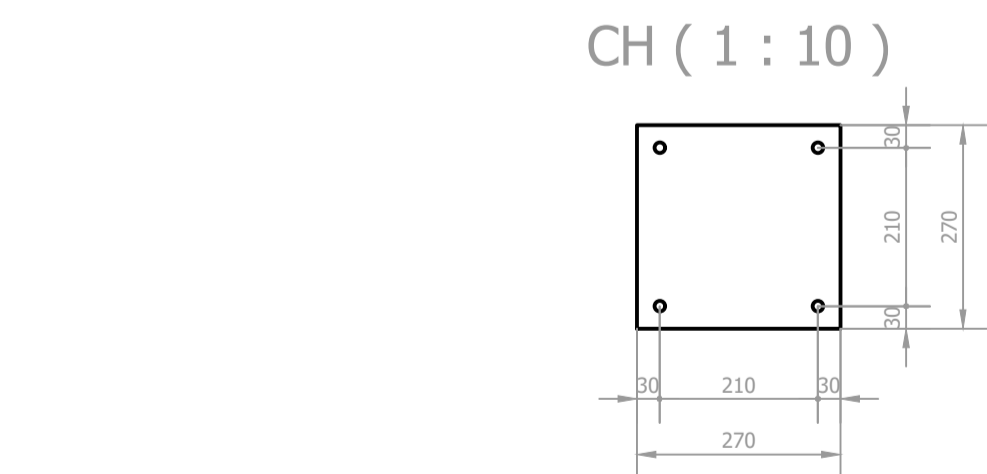
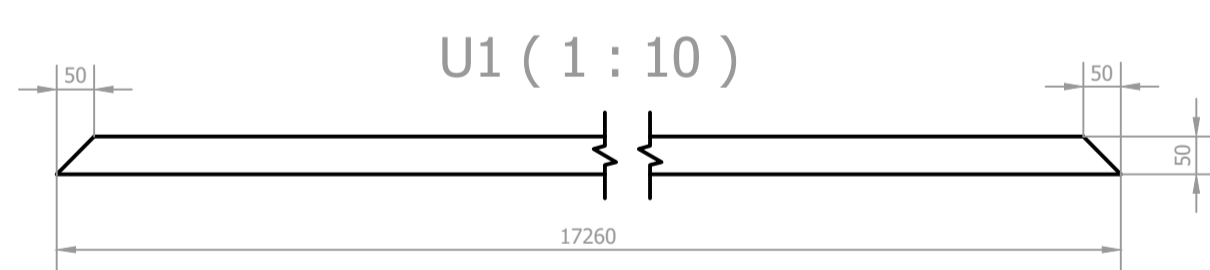
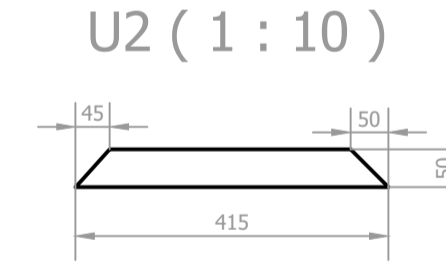
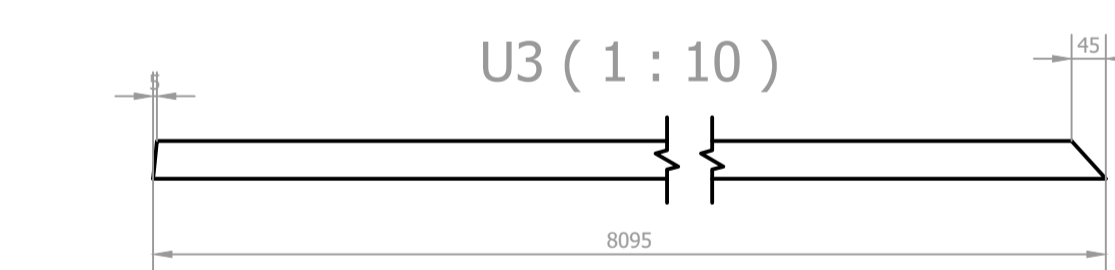
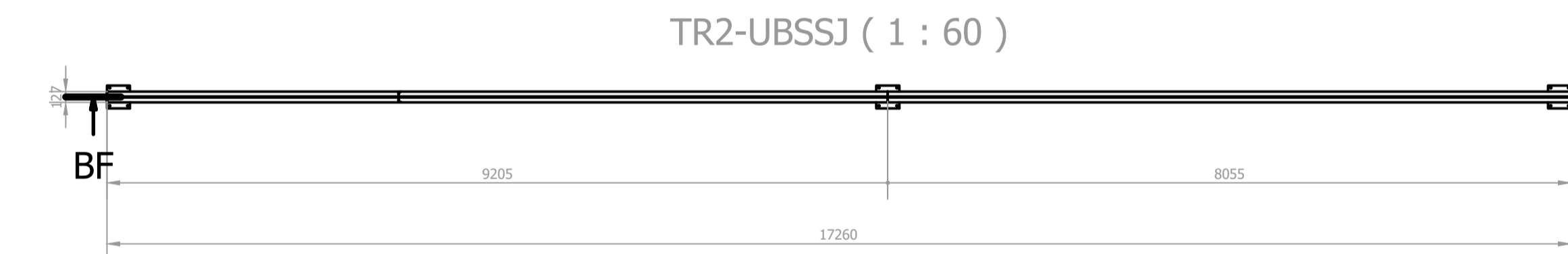
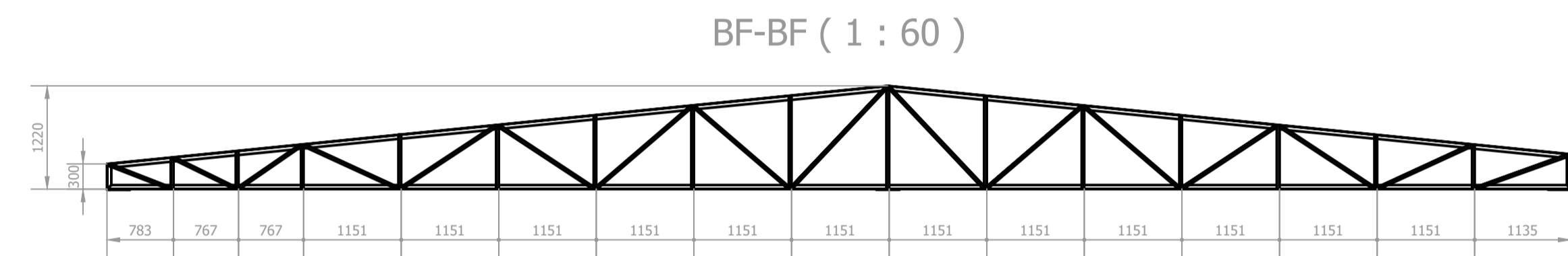


LISTA DE QUANTIDADES						
ID	ITEM	QTD	DESCRIÇÃO	COMPRI.	MATERIAL	PESO UN.
26	L15	1	L 1.1.4 x 1.8	525,698 mm	ASTM A36	0,8 kg
27	L2	1	L 1.1.4 x 1.8	963,694 mm	ASTM A36	1,4 kg
28	L30	1	L 1.1.4 x 1.8	1315,248 mm	ASTM A36	2,0 kg
29	L24	1	L 1.1.4 x 1.8	1421,422 mm	ASTM A36	2,1 kg
30	L20	1	L 1.1.4 x 1.8	1549,431 mm	ASTM A36	2,4 kg
33	L25	1	L 1.1.4 x 1.8	1412,424 mm	ASTM A36	2,2 kg
39	L4	1	L 1.1.4 x 1.8	899,967 mm	ASTM A36	1,3 kg
40	L18	1	L 1.1.4 x 1.8	1673,971 mm	ASTM A36	2,6 kg
48	L9	1	L 1.1.4 x 1.8	804,001 mm	ASTM A36	1,2 kg
50	L21	1	L 1.1.4 x 1.8	1519,032 mm	ASTM A36	2,4 kg
52	L27	1	L 1.1.4 x 1.8	1378,941 mm	ASTM A36	2,1 kg
53	L26	1	L 1.1.4 x 1.8	1411,776 mm	ASTM A36	2,1 kg
54	L6	1	L 1.1.4 x 1.8	858,875 mm	ASTM A36	1,3 kg
55	L1	4	L 1.1.4 x 1.8	985,948 mm	ASTM A36	1,5 kg
56	L3	3	L 1.1.4 x 1.8	925,504 mm	ASTM A36	1,4 kg
57	L5	4	L 1.1.4 x 1.8	870,885 mm	ASTM A36	1,4 kg
58	L7	2	L 1.1.4 x 1.8	824,141 mm	ASTM A36	1,3 kg
59	L8	3	L 1.1.4 x 1.8	804,001 mm	ASTM A36	1,2 kg
60	L10	4	L 1.1.4 x 1.8	755,823 mm	ASTM A36	1,2 kg
61	L11	4	L 1.1.4 x 1.8	640,760 mm	ASTM A36	1,0 kg
62	L12	1	L 1.1.4 x 1.8	525,698 mm	ASTM A36	0,8 kg
63	L13	1	L 1.1.4 x 1.8	525,698 mm	ASTM A36	0,8 kg
64	L14	1	L 1.1.4 x 1.8	525,698 mm	ASTM A36	0,8 kg
65	L16	4	L 1.1.4 x 1.8	448,989 mm	ASTM A36	0,7 kg
66	L17	4	L 1.1.4 x 1.8	372,281 mm	ASTM A36	0,6 kg
67	L19	3	L 1.1.4 x 1.8	1669,653 mm	ASTM A36	2,6 kg
68	L22	3	L 1.1.4 x 1.8	1510,781 mm	ASTM A36	2,4 kg
69	L23	3	L 1.1.4 x 1.8	1491,198 mm	ASTM A36	2,3 kg
70	L28	2	L 1.1.4 x 1.8	1372,256 mm	ASTM A36	2,1 kg
71	L29	2	L 1.1.4 x 1.8	1350,170 mm	ASTM A36	2,1 kg
72	L31	3	L 1.1.4 x 1.8	1236,185 mm	ASTM A36	1,9 kg
73	L32	2	L 1.1.4 x 1.8	1214,485 mm	ASTM A36	1,9 kg
74	L33	4	L 1.1.4 x 1.8	1101,010 mm	ASTM A36	1,7 kg
75	U1	2	3X127X50	9250,911 mm	ASTM A36	47,2 kg
76	U2	2	3X127X50	300,000 mm	ASTM A36	1,4 kg
77	U3	1	3X127X50	18410,000 mm	ASTM A36	93,9 kg
79	CH2	3	1 x 1 x 1		Aço ASTM A36	2,7 kg



LISTA DE QUANTIDADES						
ID	ITEM	QTD	DESCRIÇÃO	COMPRI.	MATERIAL	PESO UN.
2	U5	1	3X127X50	300,000 mm	ASTM A36	1,4 kg
17	L25	1	L 1.1.4 x 1.8	972,650 mm	ASTM A36	1,4 kg
18	L22	1	L 1.1.4 x 1.8	858,875 mm	ASTM A36	1,3 kg
34	L5	1	L 1.1.4 x 1.8	1272,288 mm	ASTM A36	1,9 kg
35	L19	1	L 1.1.4 x 1.8	755,823 mm	ASTM A36	1,2 kg
48	L3	1	L 1.1.4 x 1.8	1236,185 mm	ASTM A36	1,9 kg
49	L21	1	L 1.1.4 x 1.8	824,141 mm	ASTM A36	1,3 kg
50	L20	1	L 1.1.4 x 1.8	804,001 mm	ASTM A36	1,2 kg
51	L24	1	L 1.1.4 x 1.8	963,694 mm	ASTM A36	1,4 kg
52	L12	1	L 1.1.4 x 1.8	1669,653 mm	ASTM A36	2,6 kg
53	U1	1	3X127X50	17260,000 mm	ASTM A36	88,0 kg
54	U2	1	3X127X50	415,000 mm	ASTM A36	2,0 kg
55	U3	1	3X127X50	8095,175 mm	ASTM A36	41,3 kg
56	U4	1	3X127X50	9250,911 mm	ASTM A36	47,2 kg
57	L1	5	L 1.1.4 x 1.8	*Varia*	ASTM A36	*Varia*
58	L2	3	L 1.1.4 x 1.8	*Varia*	ASTM A36	*Varia*
59	L4	2	L 1.1.4 x 1.8	1260,938 mm	ASTM A36	1,9 kg
60	L6	1	L 1.1.4 x 1.8	1350,170 mm	ASTM A36	2,1 kg
61	L7	3	L 1.1.4 x 1.8	1350,170 mm	ASTM A36	2,1 kg
62	L8	4	L 1.1.4 x 1.8	1372,256 mm	ASTM A36	2,1 kg
63	L9	4	L 1.1.4 x 1.8	1491,198 mm	ASTM A36	2,3 kg
64	L10	4	L 1.1.4 x 1.8	1510,781 mm	ASTM A36	2,4 kg
65	L11	3	L 1.1.4 x 1.8	*Varia*	ASTM A36	2,6 kg
66	L13	2	L 1.1.4 x 1.8	372,281 mm	ASTM A36	0,6 kg
67	L14	2	L 1.1.4 x 1.8	448,989 mm	ASTM A36	0,7 kg
68	L15	4	L 1.1.4 x 1.8	525,698 mm	ASTM A36	0,8 kg
69	L16	2	L 1.1.4 x 1.8	640,760 mm	ASTM A36	1,0 kg
70	L17	2	L 1.1.4 x 1.8	642,188 mm	ASTM A36	1,0 kg
71	L18	2	L 1.1.4 x 1.8	755,823 mm	ASTM A36	1,2 kg
72	L23	4	L 1.1.4 x 1.8	870,885 mm	ASTM A36	1,4 kg
73	L26	4	L 1.1.4 x 1.8	985,948 mm	ASTM A36	1,5 kg
74	L27	2	L 1.1.4 x 1.8	1204,071 mm	ASTM A36	1,8 kg
75	CH	3	6,35 x 270 x 270		ASTM A36	3,6 kg



REV. 00 b5/10/20 EMISSÃO INICIAL		DAC
REVISÃO DATA : DESCRIÇÃO:		RESP.:
CLIENTE		
 Prefeitura Municipal de Pouso Alegre		
 Rua Miguel Vianna, nº 81, Sala 12 Bairro Morro Chic CEP: 37500-080 - Itajubá / MG Tel: (35) 3623-5720 www.dacengenharia.com.br	GERÊNCIA DE PROJETOS PEDRO HENRIQUE JUSTINIANO ENG. CIVIL COORDENAÇÃO DE PROJETOS DENIS DE SOUZA SILVA MG-127.216/D RESPONSÁVEL TÉCNICO ENG. FLÁVIA CRISTINA BARBOSA MG-187.847/D PROJETO ENG. MECÂNICO GERMAN LOZANO DESENHO JÚLIO DEL DUCCA	
	EMPRESAMENTO REFORMA DA COBERTURA DA ESF SÃO JOÃO	
ENDEREÇO AV. ALVARINO GONÇALVES NEGRÃO, SÃO JOÃO POUSO ALEGRE - MG	DISCIPLINA METÁLICA FASE DO PROJETO EXECUTIVO	
ASSUNTO PROJETO DA COB. METÁLICA - ESF SÃO JOÃO DETALHAMENTO E QUANTITATIVO		
FOLHA Nº. 3/6		
DATA INICIAL 05/10/2021	ESCALA INDICADA	REVISÃO ROO
ARQUIVO DAC-PMPA-ESJ-PE-MET-ROO.dwg		