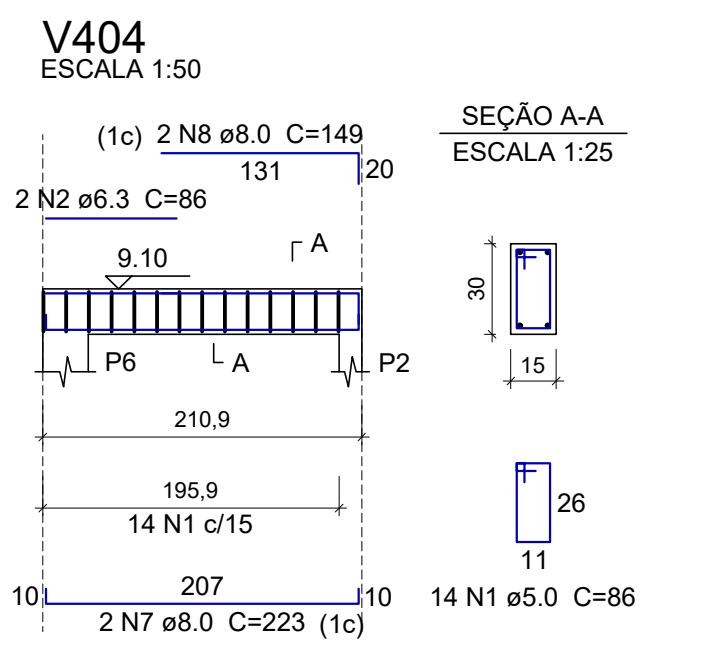
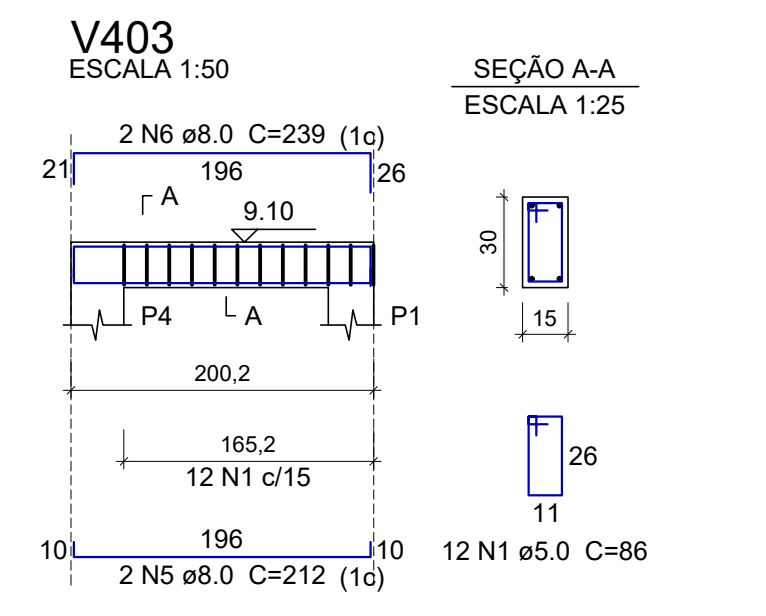
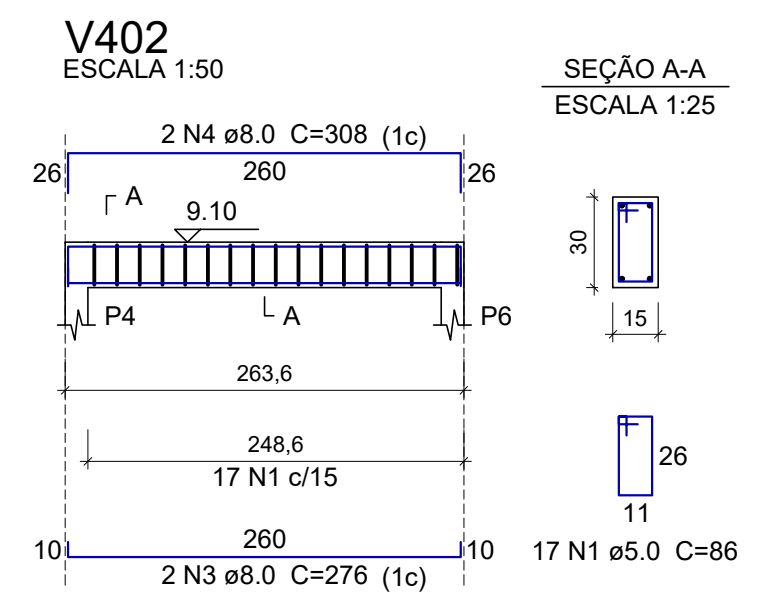
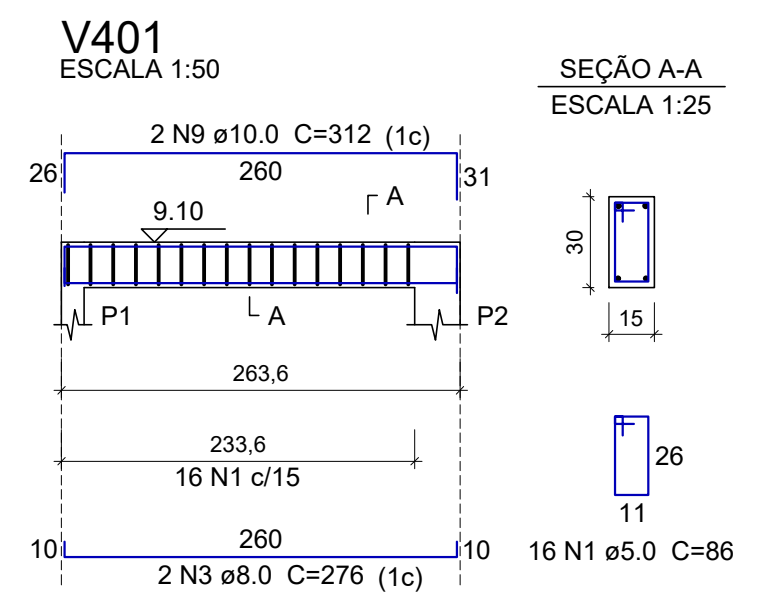
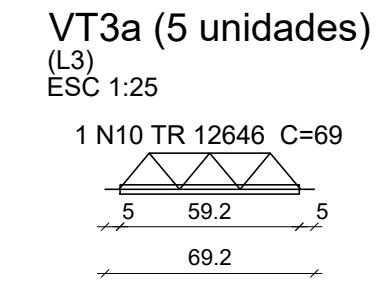
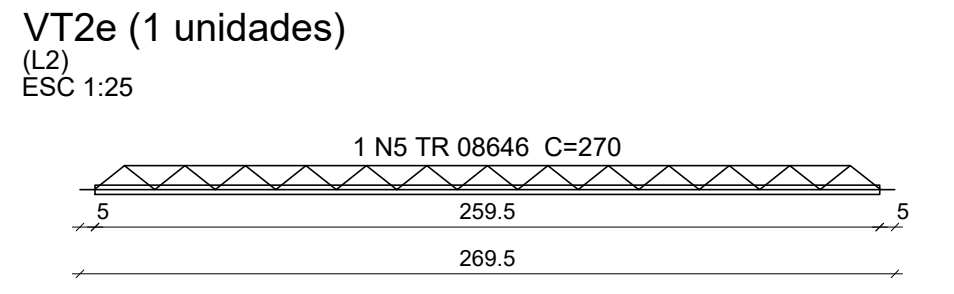
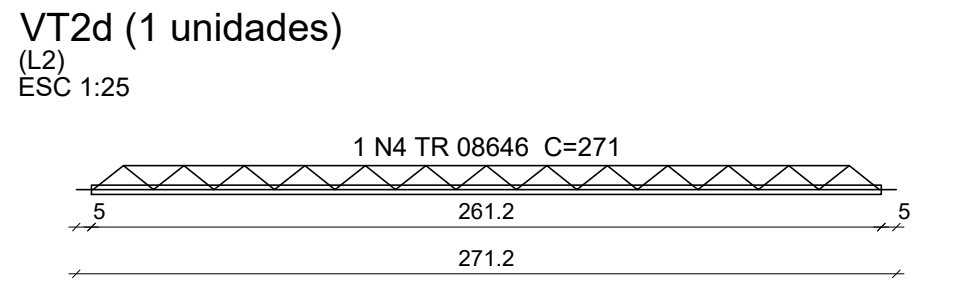
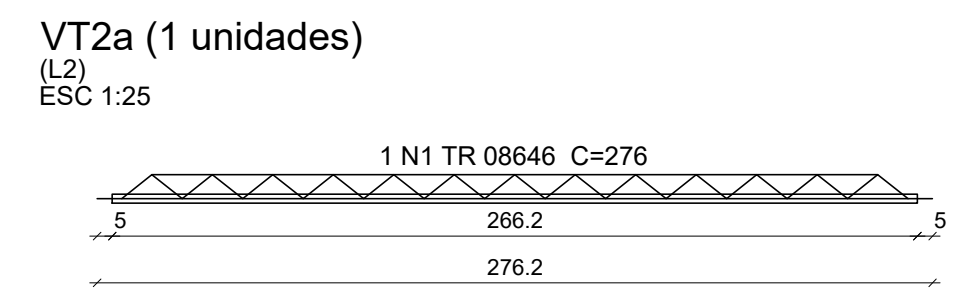
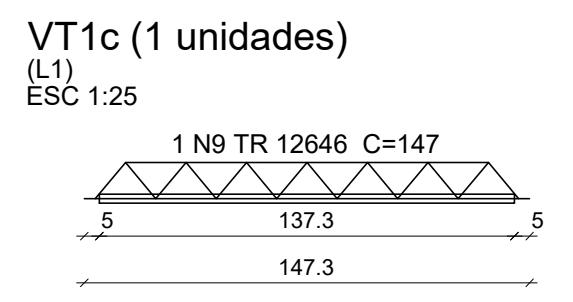
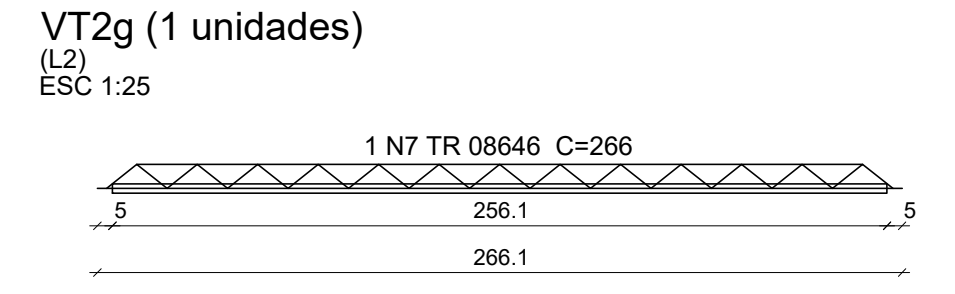
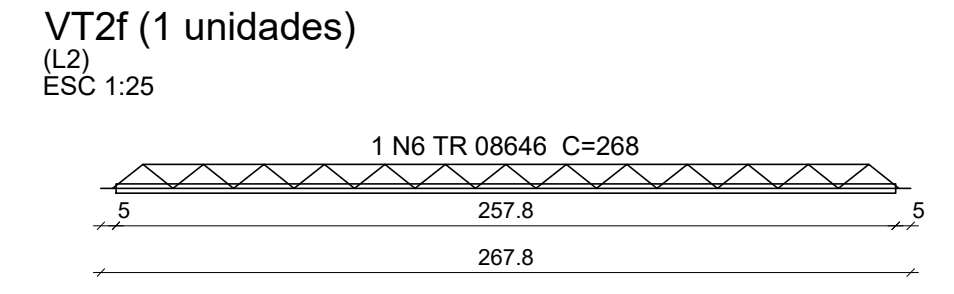
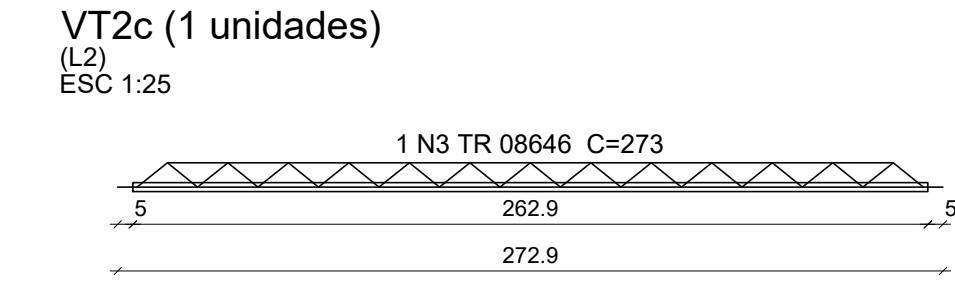
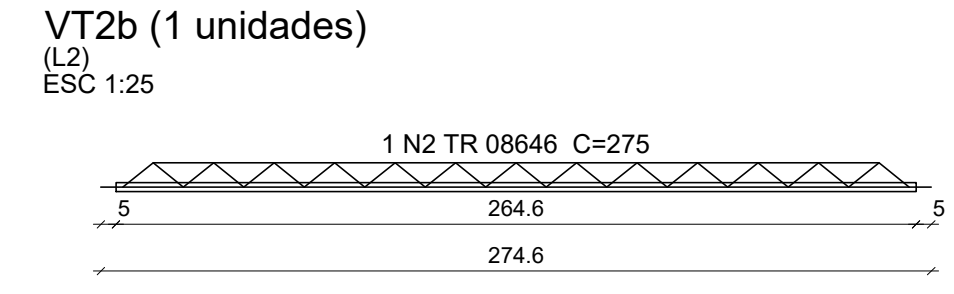
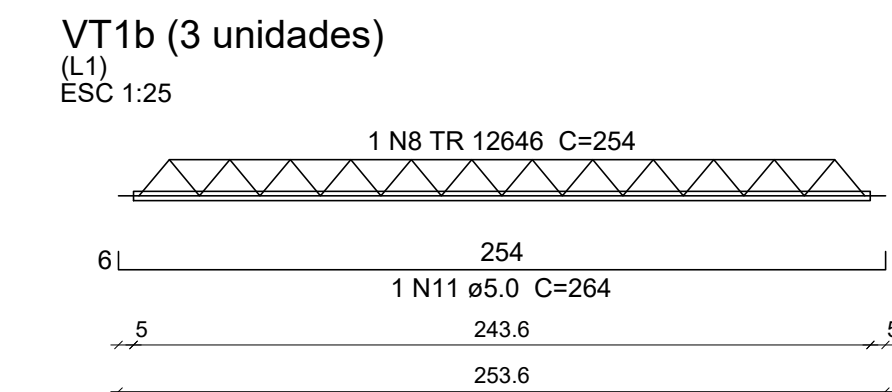
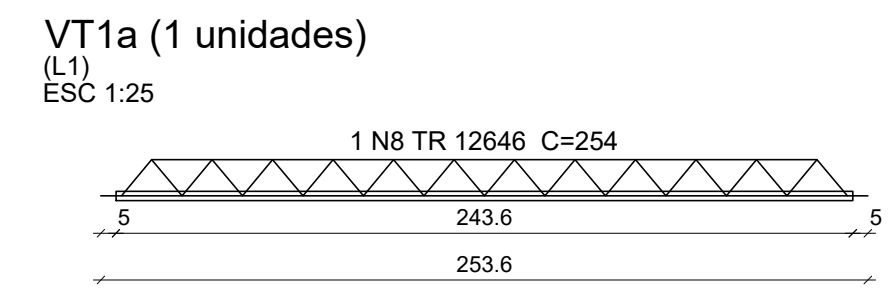


PLANTA DE VIGOTAS PRÉ-MOLDADAS
ESCALA 1:25



Relação do aço

AÇO	N	DIAM (mm)	QUANT	C.UNIT (cm)	C.TOTAL (cm)
CA60	1	TR 08646	1	276	276
	2	TR 08646	1	275	275
	3	TR 08646	1	273	273
	4	TR 08646	1	271	271
	5	TR 08646	1	270	270
	6	TR 08646	1	268	268
	7	TR 08646	1	266	266
	8	TR 12646	4	254	1016
	9	TR 12646	1	147	147
	10	TR 12646	5	69	345
	11	5.0	3	264	792

Resumo do aço

AÇO	DIAM (mm)	C.TOTAL (m)	PESO + 10 % (kg)
CA60	TR 08646	19	20.1
	TR 12646	15.1	16.9
	5.0	8	1.3
PESO TOTAL (kg)			
CA60		38.3	

Relação do aço

AÇO	N	DIAM (mm)	QUANT	C.UNIT (cm)	C.TOTAL (cm)
CA60	1	5.0	59	86	5074
CA50	2	6.3	2	86	172
	3	8.0	4	276	1104
	4	8.0	2	308	616
	5	8.0	2	212	424
	6	8.0	2	239	478
	7	8.0	2	223	446
	8	8.0	2	149	298
	9	10.0	2	312	624

Resumo do aço

AÇO	DIAM (mm)	C.TOTAL (m)	PESO + 10 % (kg)
CA50	6.3	1.8	0.5
	8.0	33.7	14.6
	10.0	6.3	4.2
CA60	5.0	50.8	8.6
PESO TOTAL (kg)			
CA50		19.3	
CA60		8.6	

Volume de concreto (C-25) = 0.35 m³
Área de forma = 5.76 m²

REV. 00	11/10/22	EMISSÃO INICIAL	DAC
REVISÃO	DATA	DESCRIÇÃO	RESP.



 Rua Miguel Viana, nº 81, Sala 12 Bairro Morro Chic CEP: 37500-080 - Itajubá / MG Tel: (35) 3623-8846 www.dacengenharia.com.br	GERÊNCIA DE PROJETOS DENIS DE SOUZA SILVA CREA-MG-127.216/D
	COORDENAÇÃO DE PROJETOS ALOISIO CAETANO FERREIRA CREA-MG-97.132/D RESPONSÁVEL TÉCNICO ENGRº CIVIL FLÁVIA C. BARBOSA CREA-MG-187.842/D
PROJETO ENGRº CIVIL FLÁVIA C. BARBOSA DESENHO WILLIAM B. LARI	

EMPENHAMENTO

REFORMA E AMPLIAÇÃO DA CASA DE BOMBA "DIQUE 2"

ENDEREÇO AVENIDA VEREADOR HERBERT CAMPOS, B. SÃO GERALDO POUSO ALEGRE - MINAS GERAIS	DISCIPLINA ESTRUTURAL
ASSUNTO PROJETO ESTRUTURAL EM CONCRETO ARMADO DETALHAMENTO DAS ARMAÇÕES	FASE DO PROJETO EXECUTIVO
DATA INICIAL 27/06/2022	ESCALA INDICADA
REVISÃO R00	ARQUIVO DAC-PMPA-DI02-PE-EST-R00.DWG

FOLHA Nº: 06/07