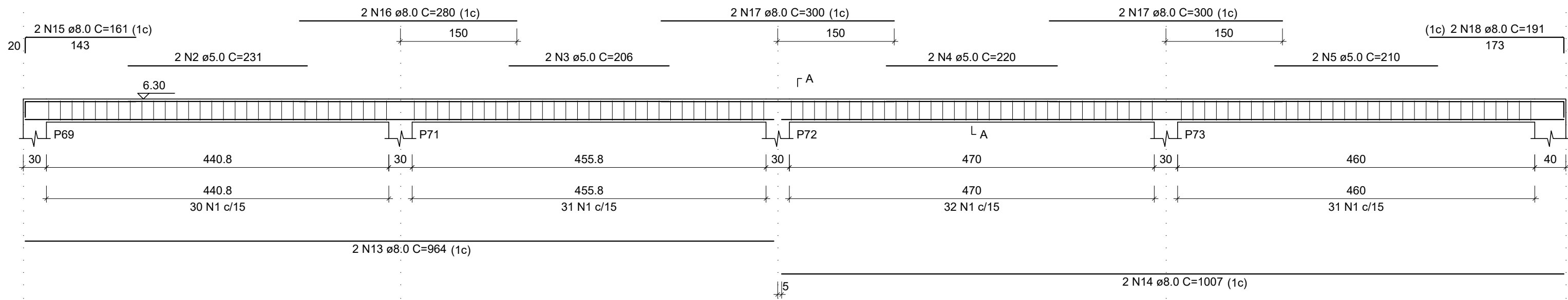
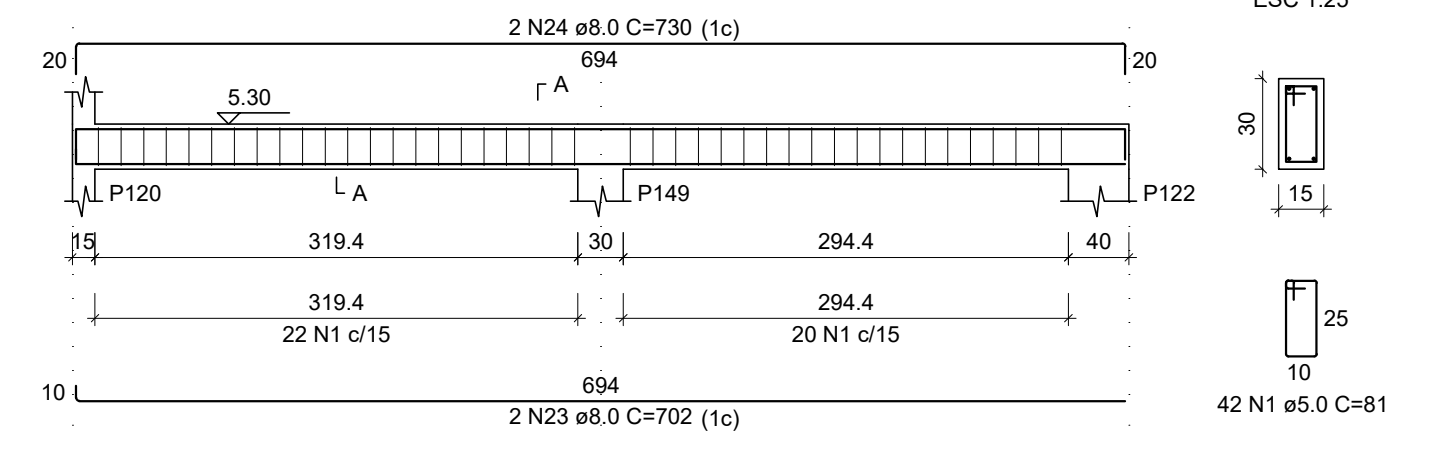


VP13
ESC 1:50



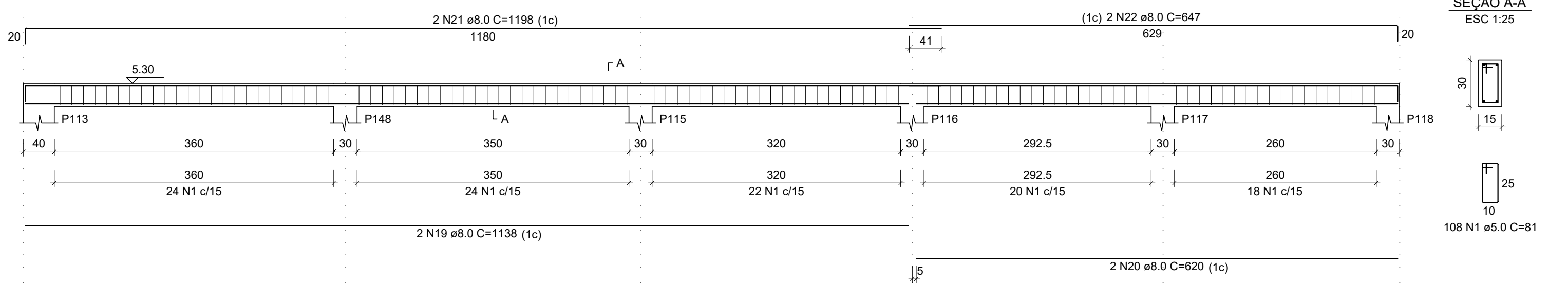
VP18
ESC 1:50



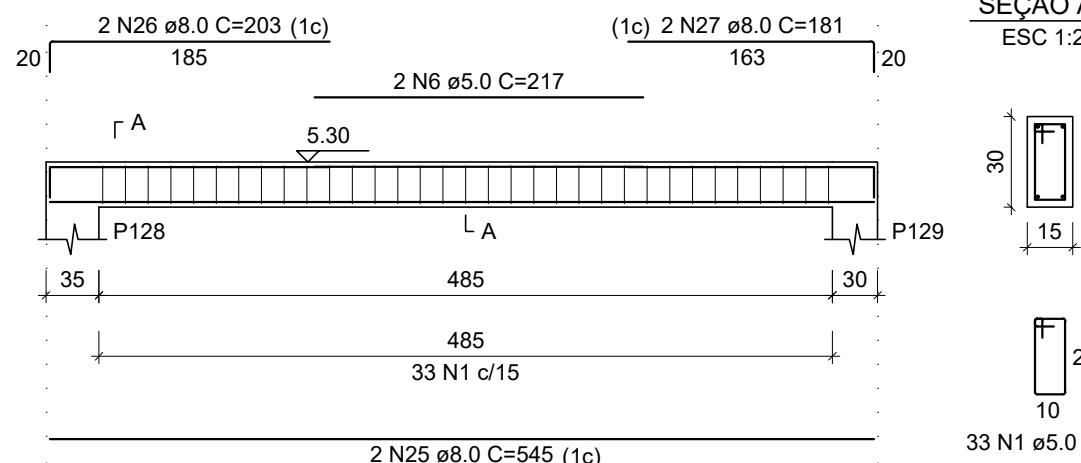
RELAÇÃO DO AÇO

AÇO	N	DIAM (mm)	QUANT	C.UNIT (cm)	C.TOTAL (cm)
CA60	1	5.0	866	81	70146
CA60	2	5.0	2	231	462
CA60	3	5.0	2	206	412
CA60	4	5.0	2	220	440
CA60	5	5.0	2	210	420
CA60	6	5.0	4	217	868
CA60	7	5.0	2	302	604
CA60	8	5.0	2	288	576
CA60	9	5.0	2	298	596
CA60	10	5.0	2	287	574
CA60	11	5.0	2	346	692
CA60	12	5.0	2	274	548
CA60	13	8.0	2	964	1928
CA60	14	8.0	2	1007	2014
CA60	15	8.0	2	181	362
CA60	16	8.0	2	380	760
CA60	17	8.0	4	300	1200
CA60	18	8.0	2	191	382
CA60	19	8.0	2	1138	2276
CA60	20	8.0	2	1240	2480
CA60	21	8.0	2	1198	2396
CA60	22	8.0	2	647	1294
CA60	23	8.0	2	702	1404
CA60	24	8.0	2	730	1460
CA60	25	8.0	2	545	1090
CA60	26	8.0	2	203	406
CA60	27	8.0	4	181	724
CA60	28	8.0	2	650	1300
CA60	29	8.0	2	598	1196
CA60	30	8.0	2	620	1240
CA60	31	8.0	2	206	412
CA60	32	8.0	2	355	710
CA60	33	8.0	2	340	680
CA60	34	8.0	2	380	760
CA60	35	8.0	2	1009	2018
CA60	36	8.0	2	390	780
CA60	37	8.0	2	560	1120
CA60	38	8.0	2	540	1080
CA60	39	8.0	2	686	1372
CA60	40	8.0	2	188	376
CA60	41	8.0	2	208	416
CA60	42	8.0	2	1065	2130
CA60	43	8.0	2	1101	2202
CA60	44	8.0	2	670	1340
CA60	45	8.0	2	220	440
CA60	46	8.0	2	233	466
CA60	47	8.0	2	341	682
CA60	48	8.0	2	361	722
CA60	49	8.0	2	291	582
CA60	50	8.0	2	311	622
CA60	51	8.0	2	234	468
CA60	52	8.0	2	254	508
CA60	53	8.0	2	169	338
CA60	54	8.0	2	209	418
CA60	55	8.0	2	648	1296
CA60	56	8.0	2	676	1352
CA60	57	8.0	2	694	1388
CA60	58	8.0	2	722	1444
CA60	59	8.0	2	392	784
CA60	60	8.0	2	428	856

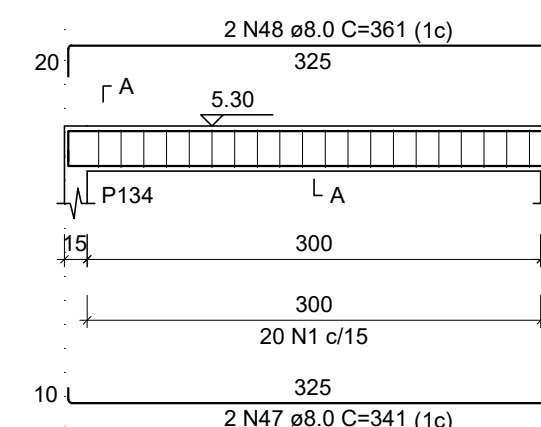
VP17
ESC 1:50



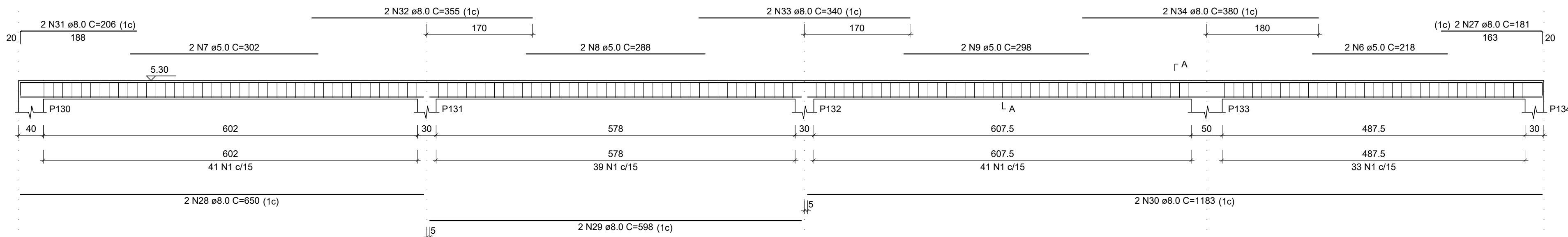
VP20
ESC 1:50



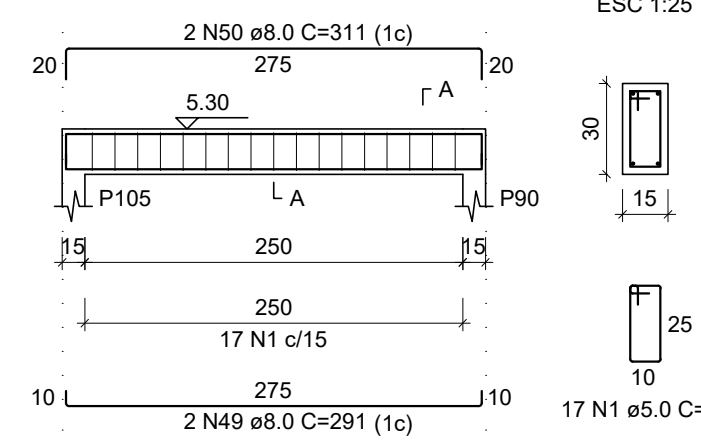
VP26
ESC 1:50



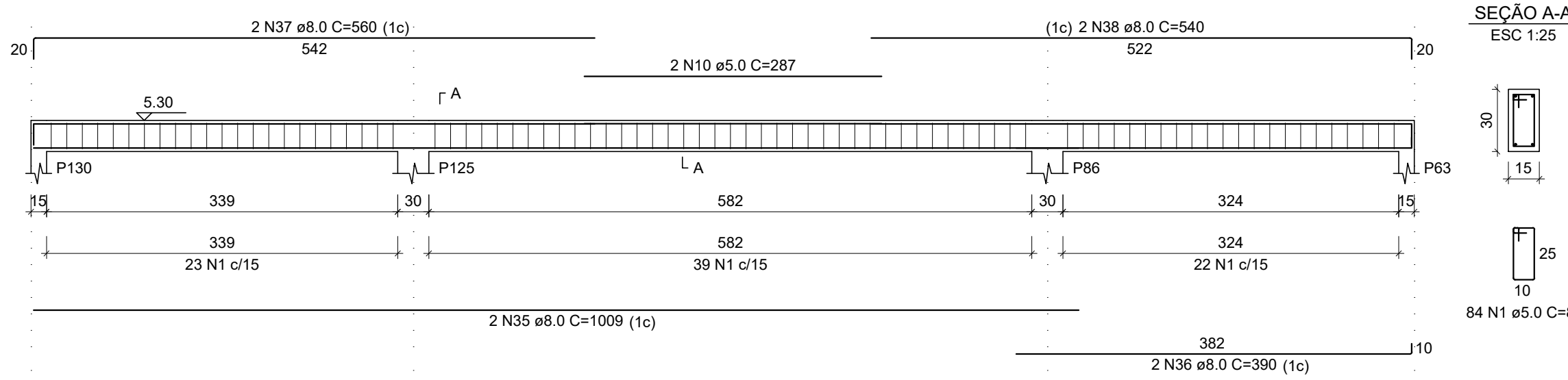
VP21
ESC 1:50



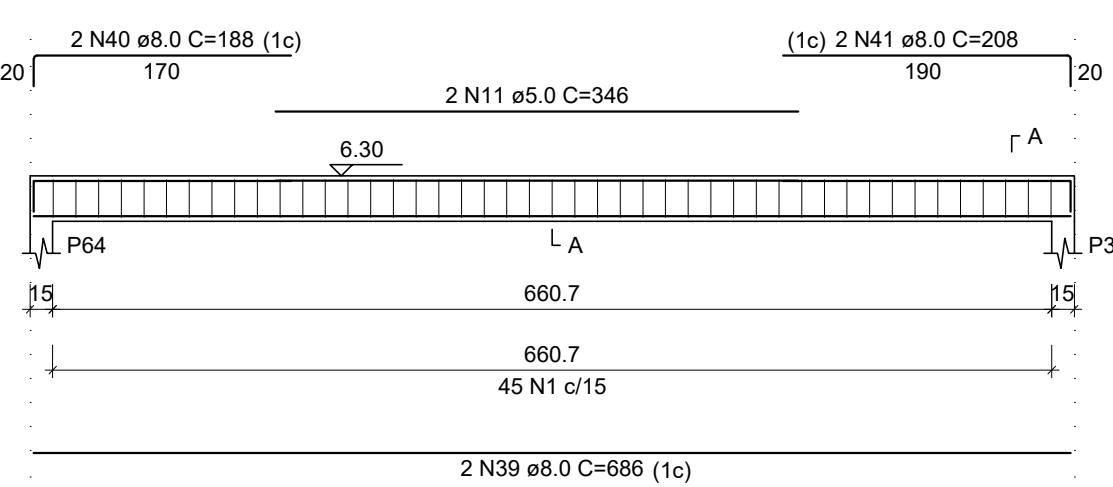
VP27
ESC 1:50



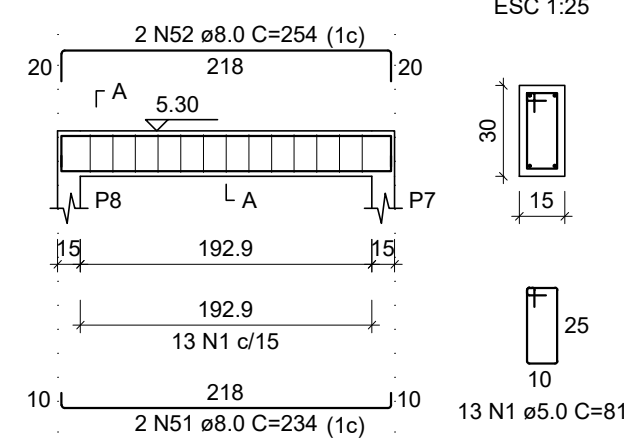
VP22
ESC 1:50



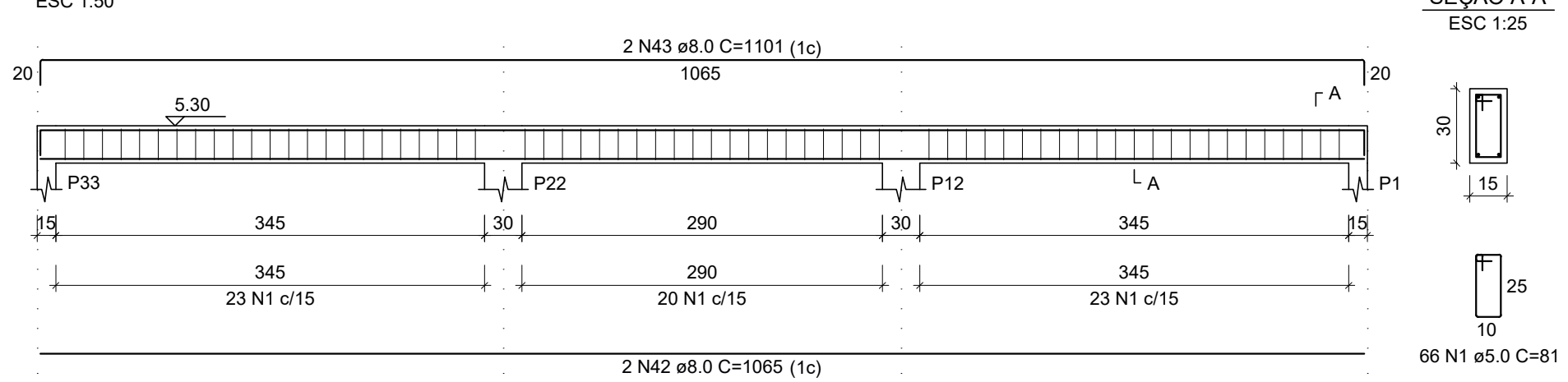
VP23
ESC 1:50



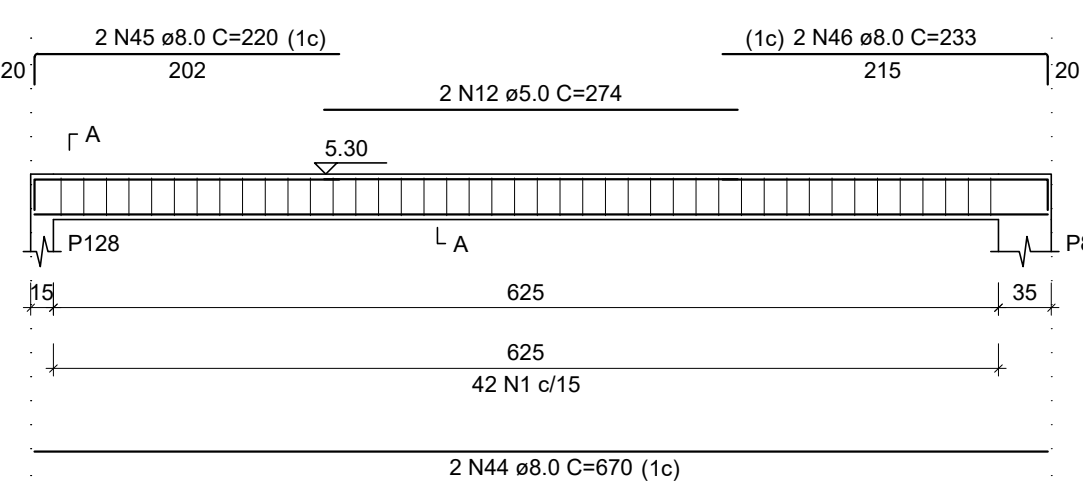
VP28
ESC 1:50



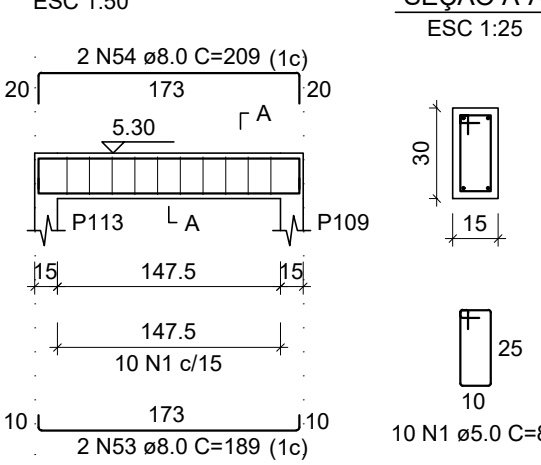
VP24
ESC 1:50



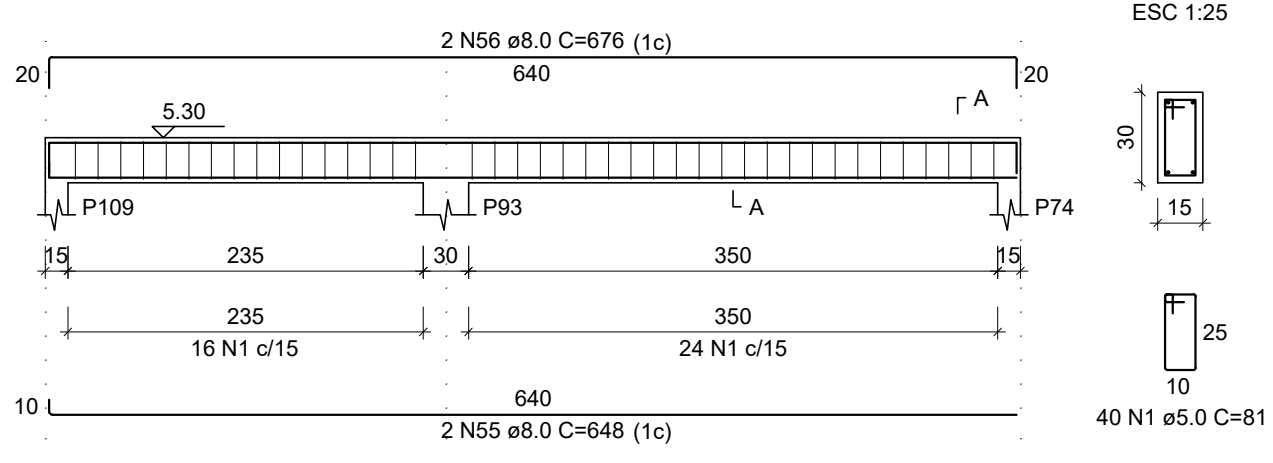
VP25
ESC 1:50



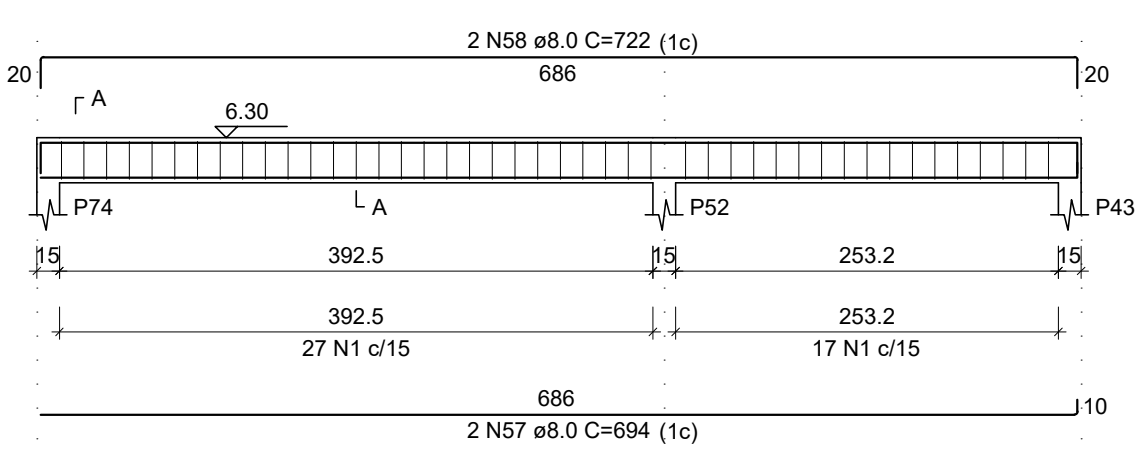
VP29
ESC 1:50



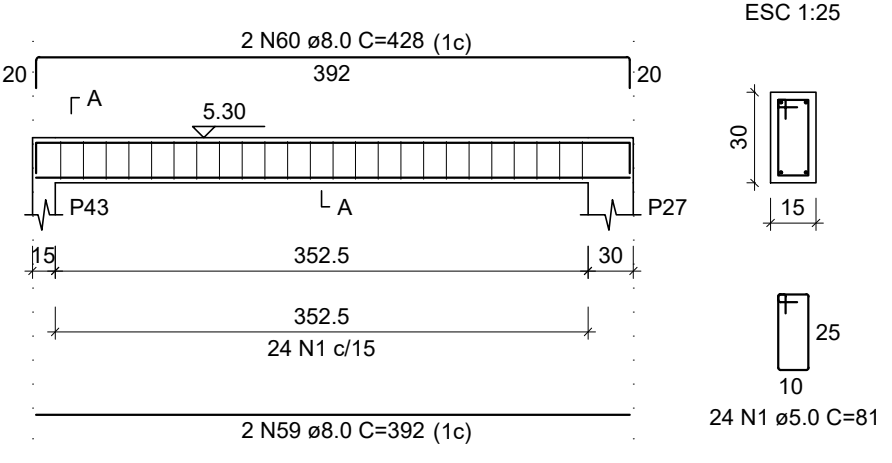
VP30
ESC 1:50



VP31
ESC 1:50



VP32
ESC 1:50



RESUMO DO AÇO

AÇO	DIAM (mm)	C.TOTAL (m)	QUANT + 10% (Barra)	UNIT	PESO + 10% (kg)
CA50	8.0	513.6	48	12 m	222.9
CA60	5.0	763.4	-	rolo (170 kg)	129.4
PESO TOTAL (kg)					
CA50					222.9
CA60					129.4

Volume de concreto (C-25) = 6.29 m³
Área de forma = 104.83 m²

REV. 00	13/04/20	EMISSÃO INICIAL	DAC
REVISÃO:	DATA :	DESCRIÇÃO:	RESP.:
		GERÊNCIA DE PROJETOS DENIS DE SOUZA SILVA CREA: MG-127.216/D	
		COORDENAÇÃO DE PROJETOS ALOISIO CAETANO FERREIRA CREA: MG-97.132/D	
		RESPONSÁVEL TÉCNICO ENGR. CIVIL FLÁVIA C. BARBOSA CREA: MG-187.842/D	
		DESENHO WILLIAM BARADEL LARI	
EMPREENDIMENTO IMPLANTAÇÃO DO CEMAPA E CENTRO POP			
ENDEREÇO RUA PROJETADA, BAIRRO SANTA CECÍLIA POUSO ALEGRE - MINAS GERAIS		DISCIPLINA ESTRUTURAL	
ASSUNTO PROJETO ESTRUTURAL DE CONCRETO ARMADO FORMAS E FERRAGENS VIGAS		FASE DO PROJETO EXECUTIVO	
		FOLHA Nº. 26/28	
DATA INICIAL	ESCALA	REVISÃO	ARQUIVO
13/04/2020	INDICADA	ROO	DAC-PMPA-CEPOP-PE-EST-ROO.DWG